

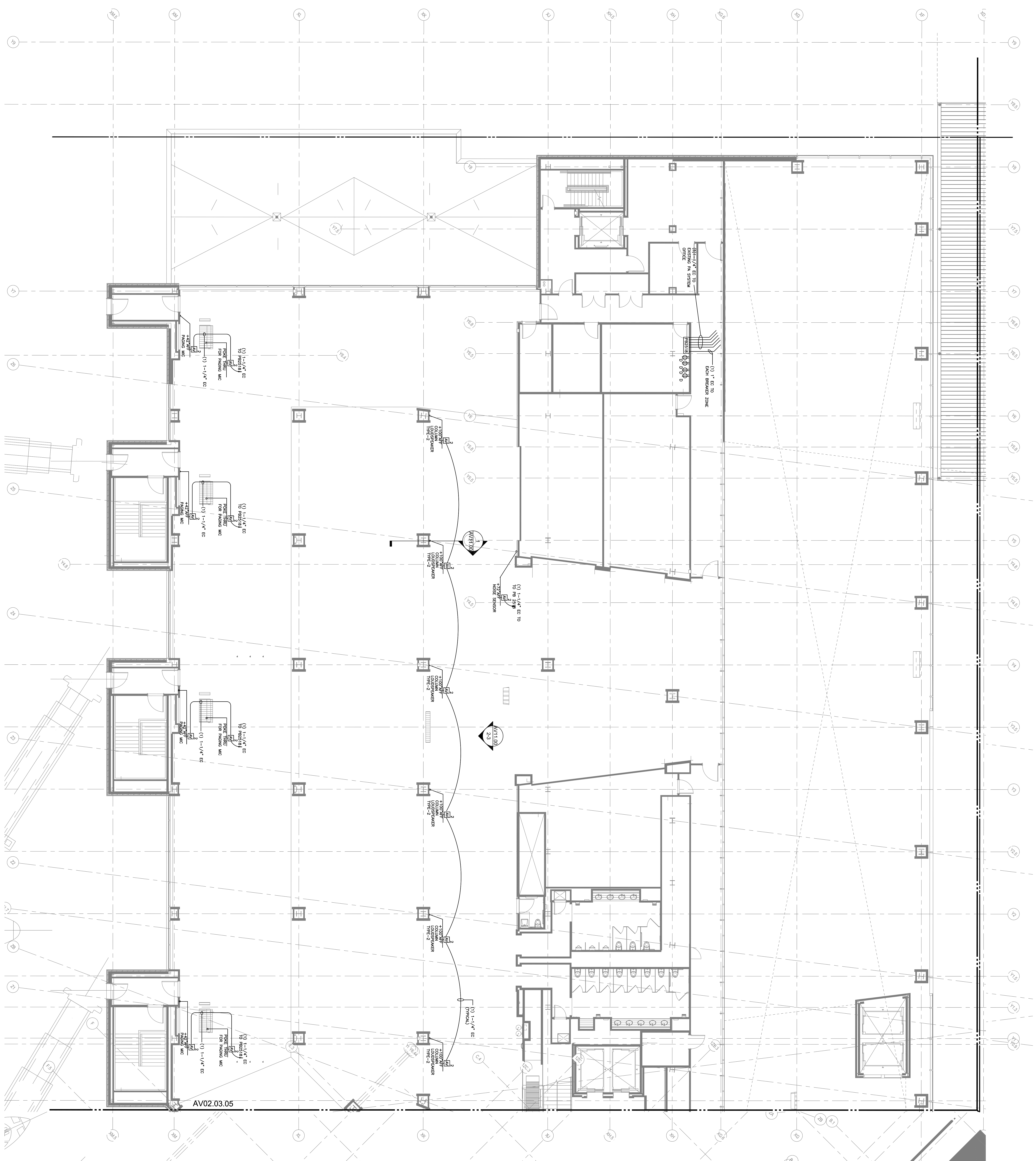
Portland International
Jetport
1001 Westbrook Street
Portland, Maine 04102

2020 K Street, Northwest
Suite 200 DC 20006
Washington DC 20004
Tel: 202.872.5800
Fax: 202.872.5897

Gensler

3300 N. Fairfax Drive
Suite 302
Arlington, Virginia 22201
Tel: 703.245.5900
www.gensler.com

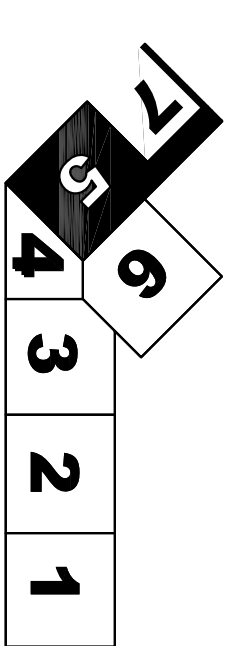
SM&W
SHEN MILSON WILKE



AV02.03.05

LEVEL 3 - ZONE 5
1/8" = 1'-0"

KEY PLAN



Issue	Date & Issue Description	By	Checked
1	12/20/08 CONSTRUCTION DOCUMENTS		
2	12/22/08 PROGRESS ISSUE		
3	01/22/09 95% CONSTRUCTION DOCUMENTS		
4	10/20/09 PROGRESS ISSUE		
5	08/17/10 ISSUED FOR PERMIT		
145	08/17/2011 ISSUED FOR CONSTRUCTION		

Subcontractor

Project Name
PAMI TERMINAL EXPANSION
Project Number
CAD File Name
Description
AUDIOVISUAL FACILITY PLAN - LEVEL 3 - ZONE 5
Scale
As Indicated

AV02.03.05

