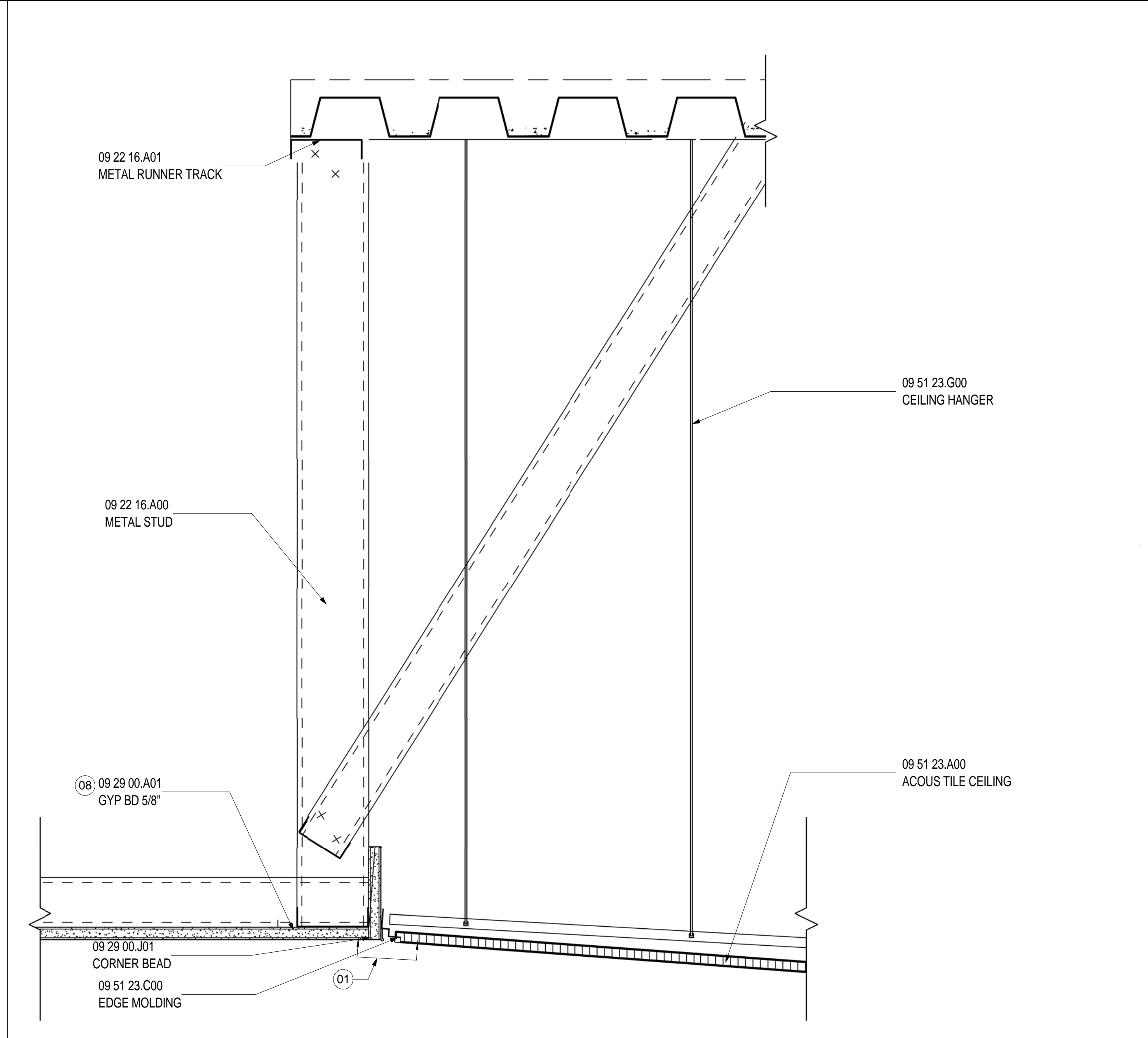
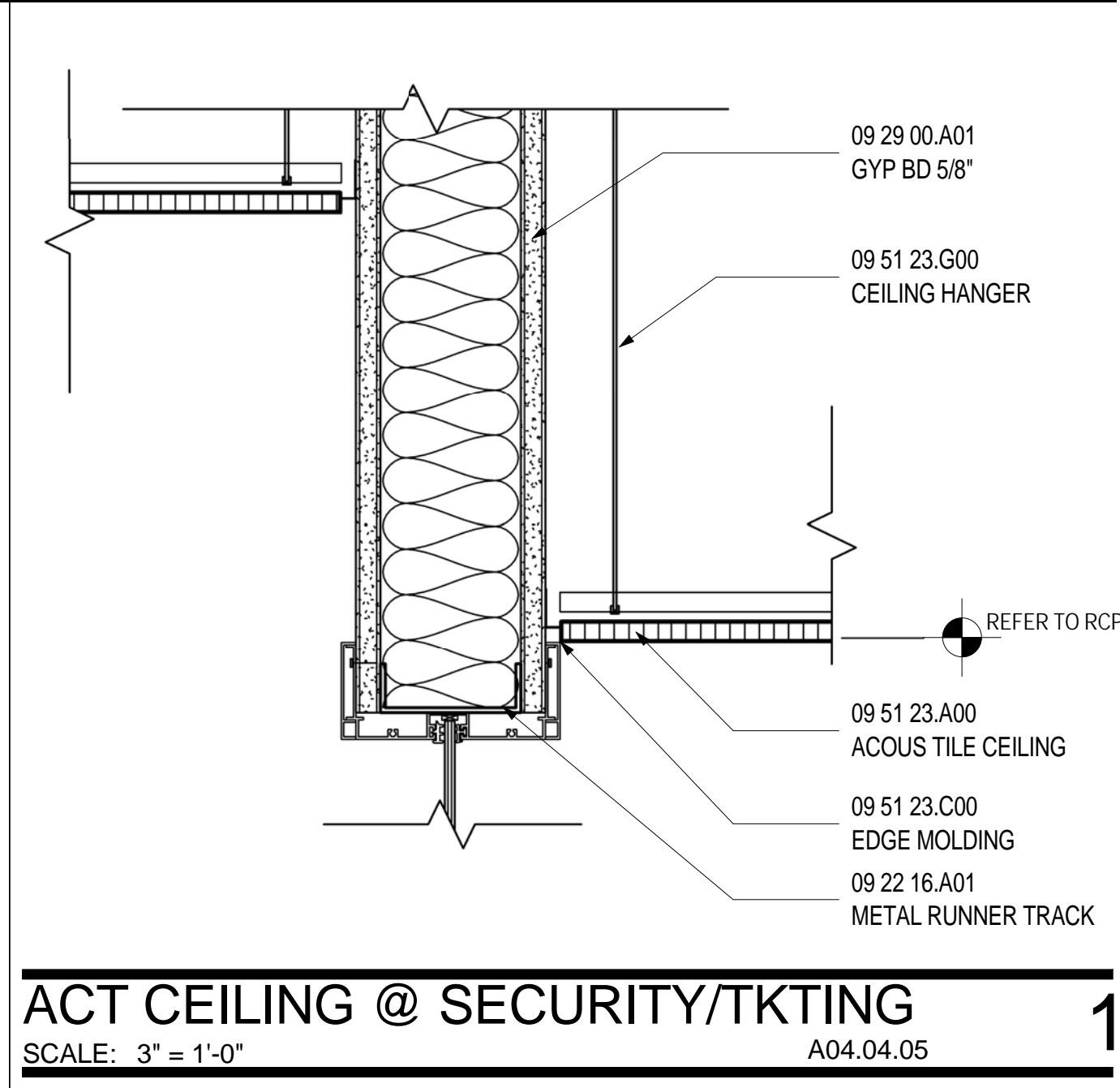


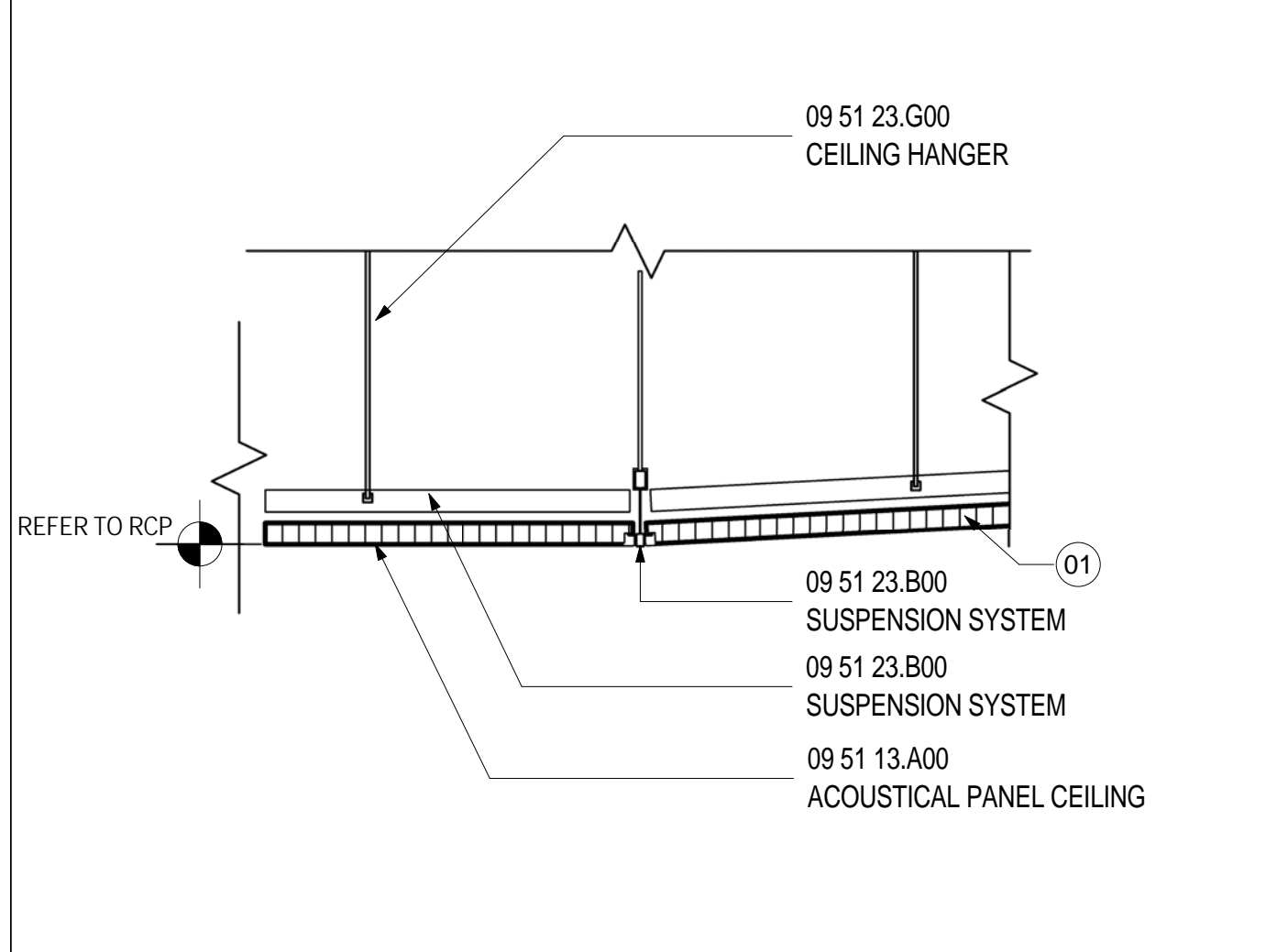
**ACT TO GYP TRANSITION AT TICKET HALL WEST EDGE**  
SCALE: 3" = 1'-0" A04.04.05 12



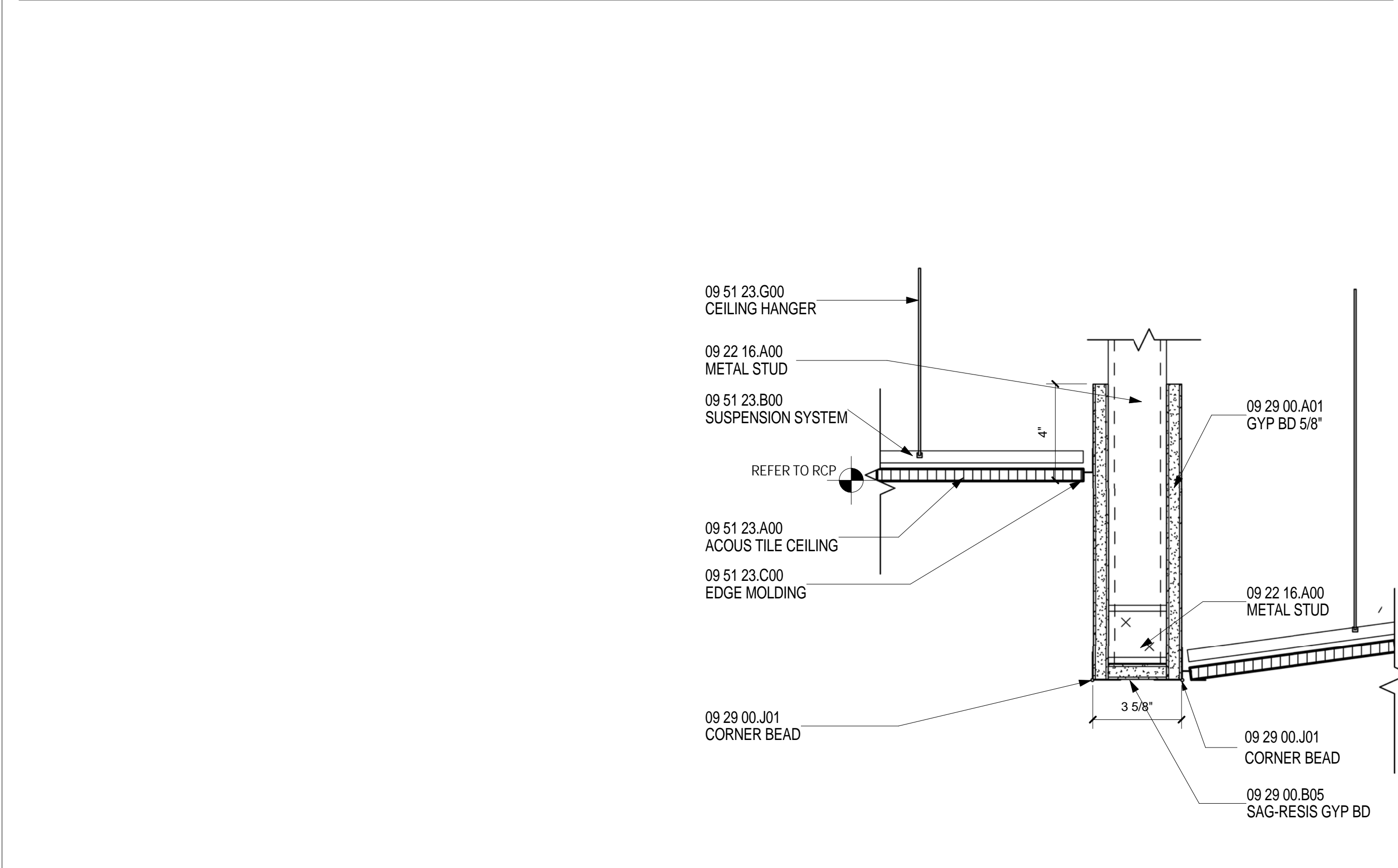
**ACT TO GYP TRANSITION AT TICKET HALL**  
SCALE: 3" = 1'-0" A04.04.05 6



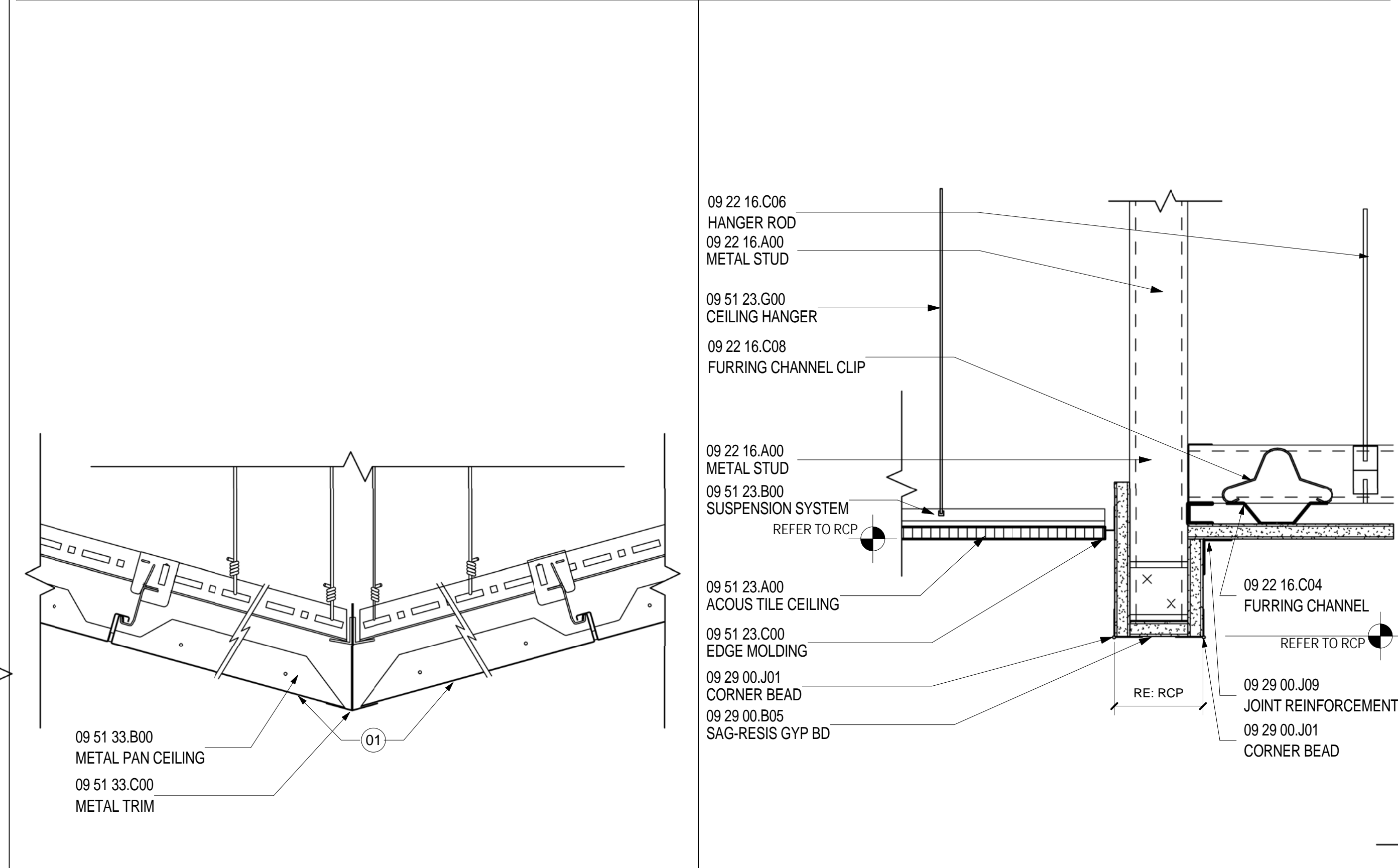
**ACT CEILING @ SECURITY/TKING**  
SCALE: 3" = 1'-0" A04.04.05 1



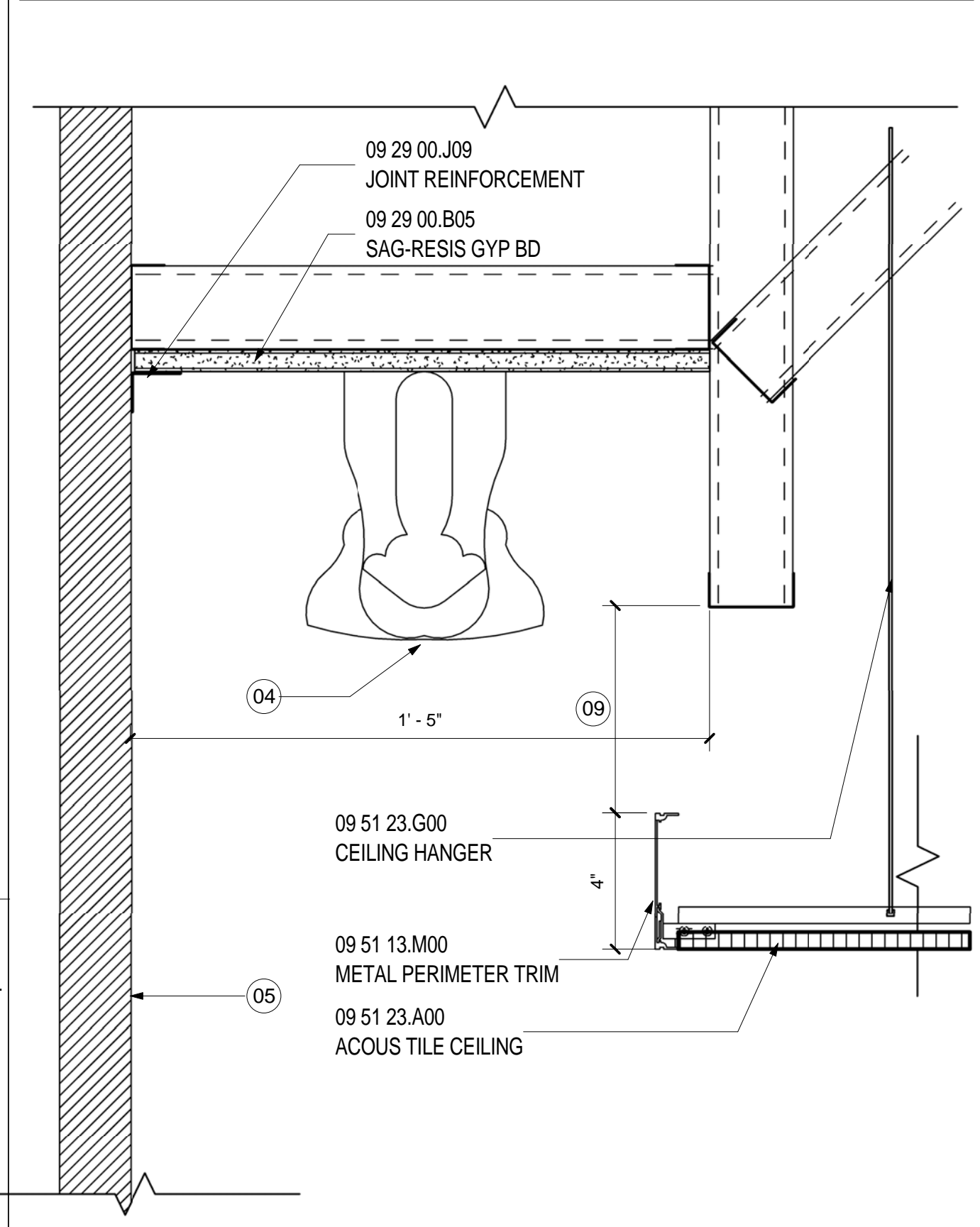
**ACT TRANSITION**  
SCALE: 3" = 1'-0" A04.04.05 2



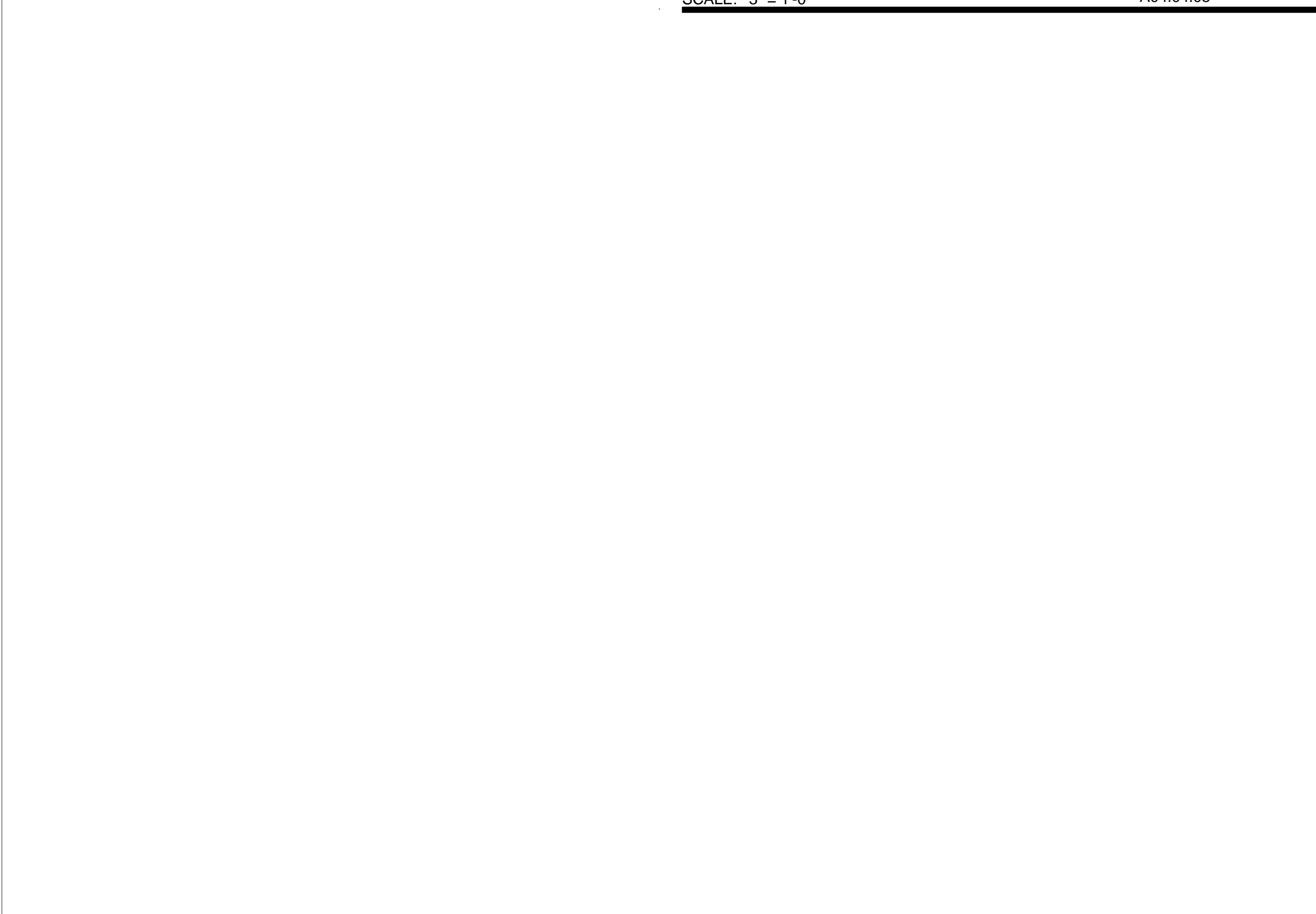
**ACT/GYP TRANSITION SECURITY LID**  
SCALE: 3" = 1'-0" A04.04.05 13



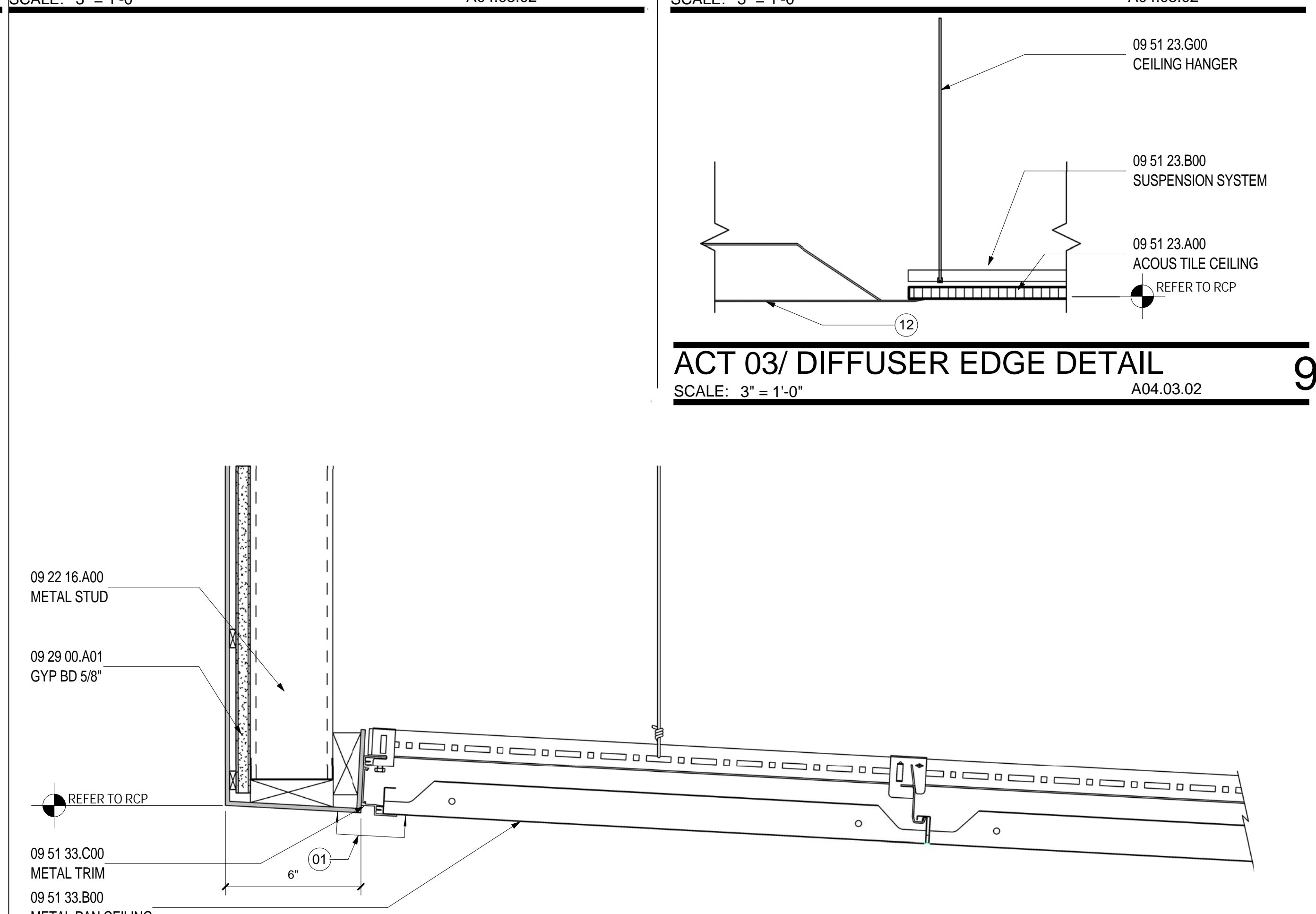
**METAL PAN CEILING TRANSITION**  
SCALE: 3" = 1'-0" A04.03.02 11



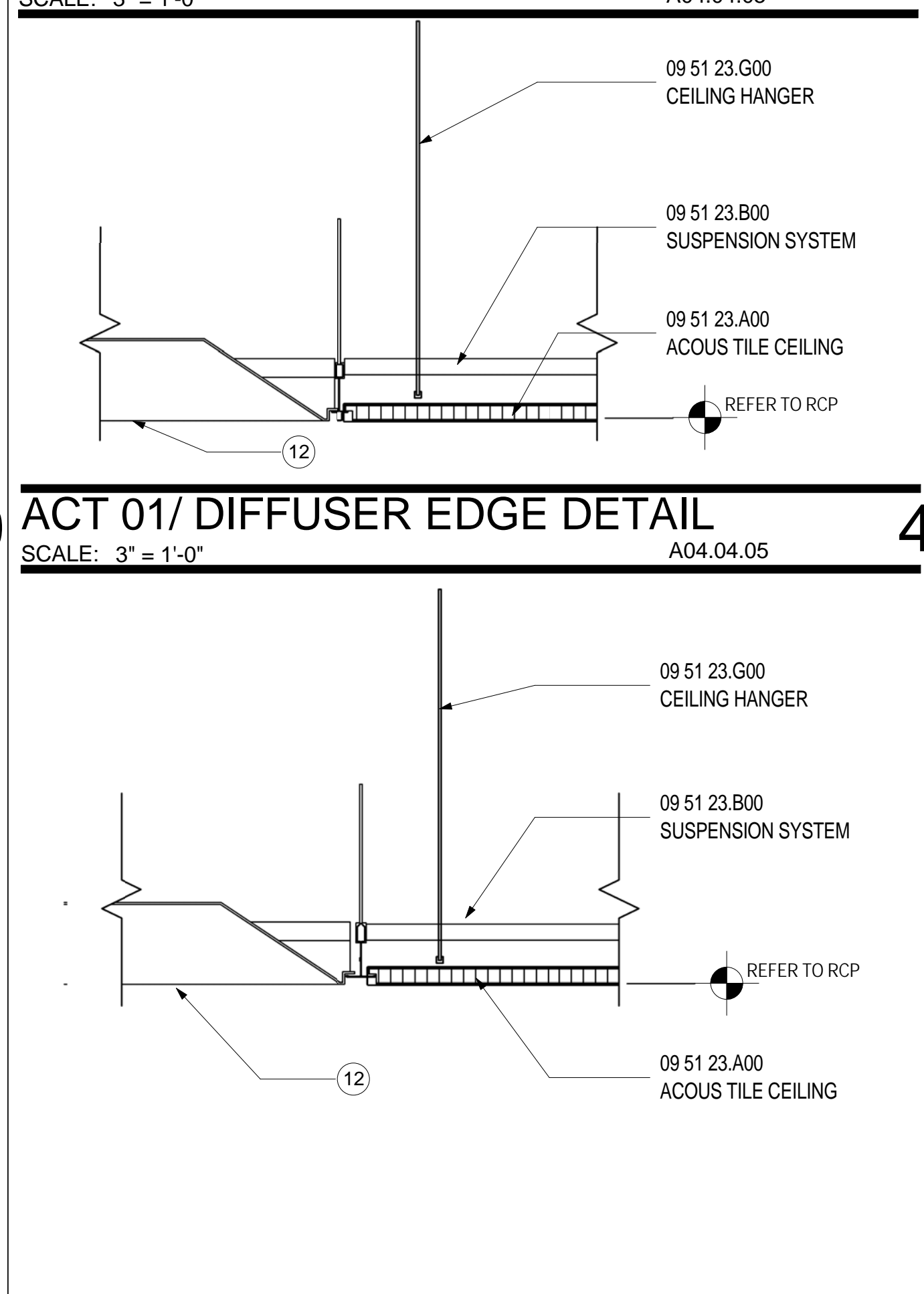
**LIGHT COVE @ FEATURE WALL**  
SCALE: 3" = 1'-0" A04.04.05 3



**ACT/GYP HEADER**  
SCALE: 3" = 1'-0" A04.03.02 7



**ACT 03/ DIFFUSER EDGE DETAIL**  
SCALE: 3" = 1'-0" A04.03.02 9



**ACT 01/ DIFFUSER EDGE DETAIL**  
SCALE: 3" = 1'-0" A04.04.05 4



**METAL TO METAL PAN CEILING TRANSITION AT TICKET HALL**  
SCALE: 3" = 1'-0" A04.03.02 10



**ACT 02/ DIFFUSER EDGE DETAIL**  
SCALE: 3" = 1'-0" A04.01.03 5

- SHEET NOTES**
- 01 RE: REFLECTED CEILING PLANS FOR INCLINE ANGLE.
  - 02 SCHEDULED LINEAR DIFFUSER, RE: MECHANICAL DRAWINGS FOR ADDITIONAL INFORMATION
  - 03 SCHEDULED DUCTWORK, RE: MECHANICAL DRAWINGS
  - 04 SCHEDULED LIGHT FIXTURE, RE: A04 SERIES FOR RCP AND PROJECT MANUAL FOR ADDITIONAL INFORMATION
  - 05 SCHEDULED PARTITION, RE: A02 SERIES FOR CONSTRUCTION PLAN AND PARTITION TYPES.
  - 06 OVERLAP OF STAGGERED CARRYING CHANNELS.
  - 07 METAL ANGLE TO BE PAINTED P-01
  - 08 GYP PAINTED P-01
  - 09 OPENING FOR RETURN AIR
  - 10 REFER TO DETAIL 17/A12.63 FOR TRANSITION TO PORTAL
  - 11 LINE INDICATES EXTENT OF CONTROL JOINT AS INDICATED IN THE RCP AND ELEVATION
  - 12 SCHEDULED DIFFUSER, RE: MECHANICAL DRAWINGS FOR ADDITIONAL INFORMATION

**GENERAL NOTES**

**Portland International Jetport**  
1001 Westbrook Street  
Portland, Maine 04102

2020 K Street, Northwest  
Suite 200  
Washington DC 20006  
Telephone 202.721.5200  
Facsimile 202.872.8587

**Gensler**

Date	Description
10/26/09	ISSUED FOR PERMIT
2 11/12/09	ADDENDUM #2
3 11/20/09	ADDENDUM #3
145 09/01/11	ISSUED FOR CONSTRUCTION

Seal/Signature

Project Name  
PJM Terminal Enhancement

Project Number  
09.6395.000

Description  
TYPICAL CEILING DETAILS

Scale  
3" = 1'-0"

Seal/Signature

**A12.81**

© 2009 Gensler