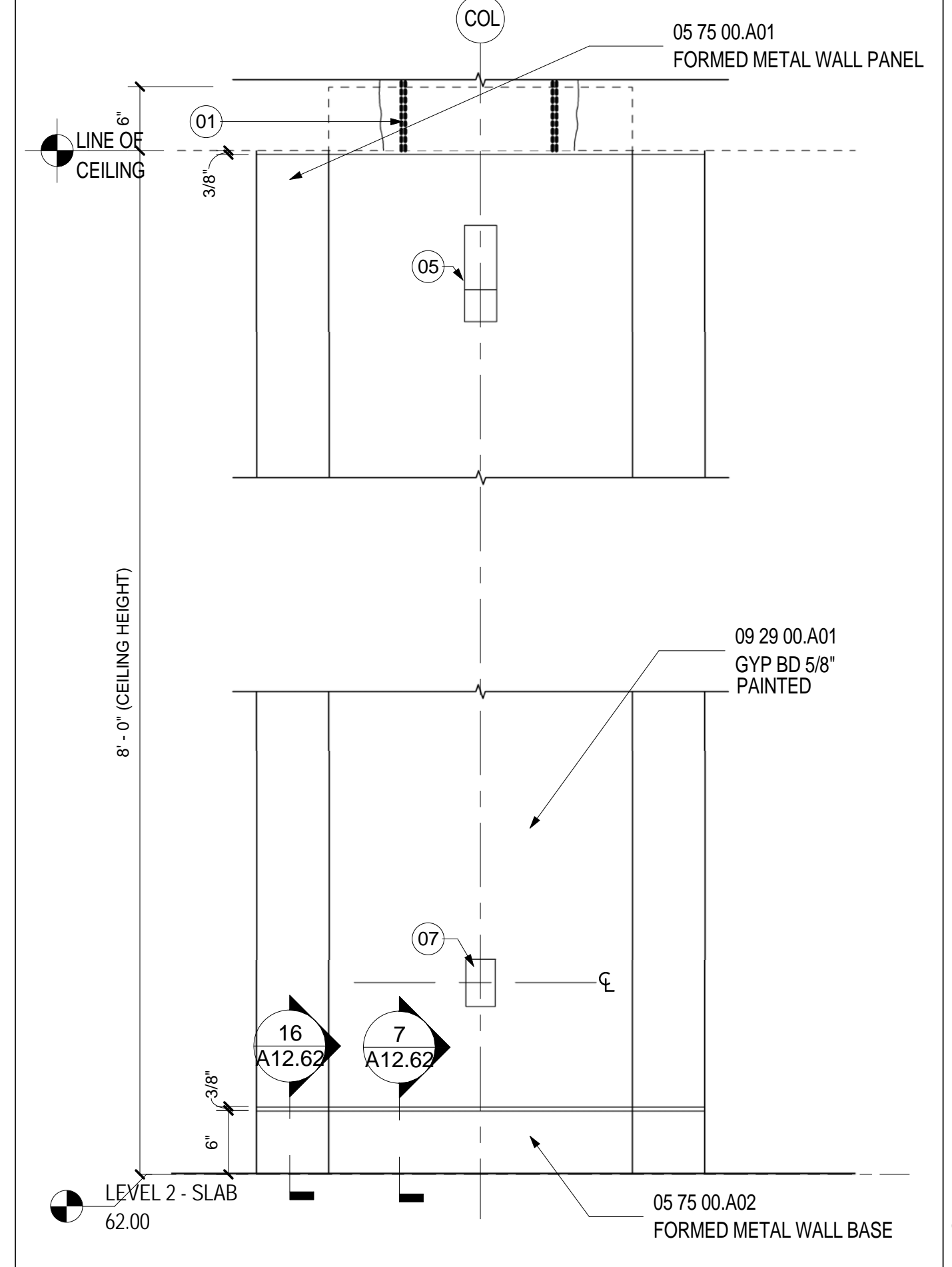
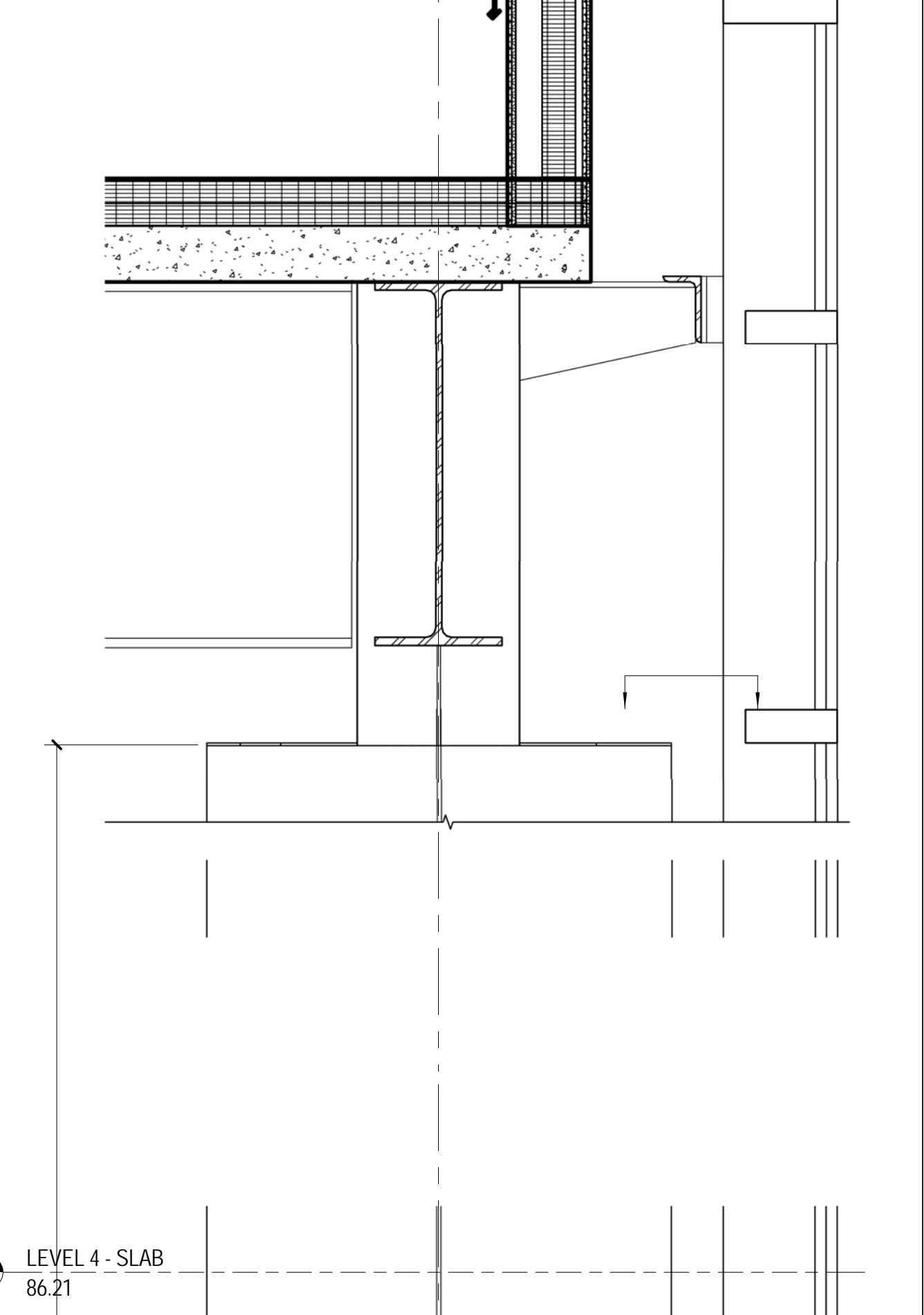


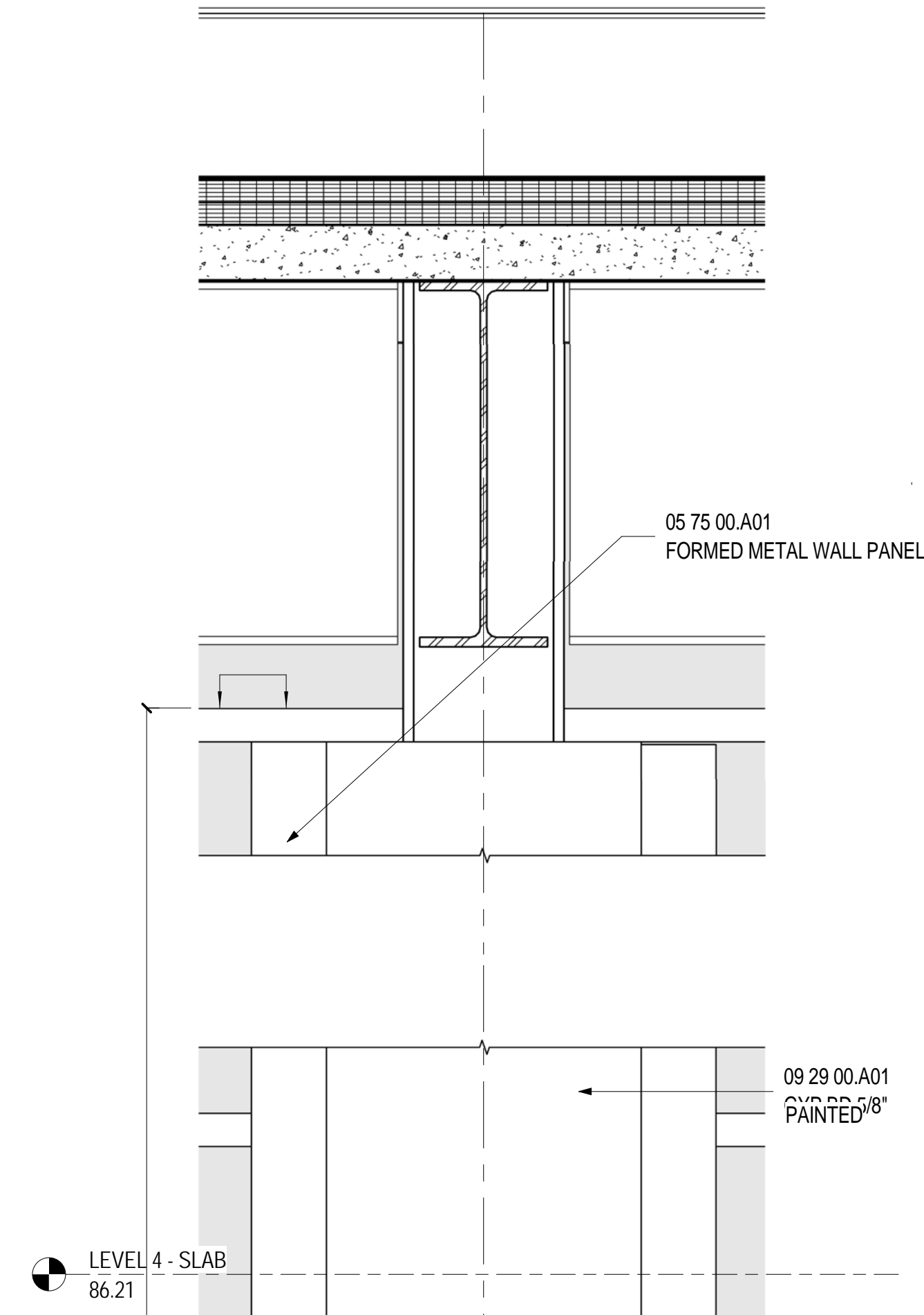
**SIDE ELEV OF @ TKT HALL PILASTER**  
SCALE: 1" = 1'-0" A12.70



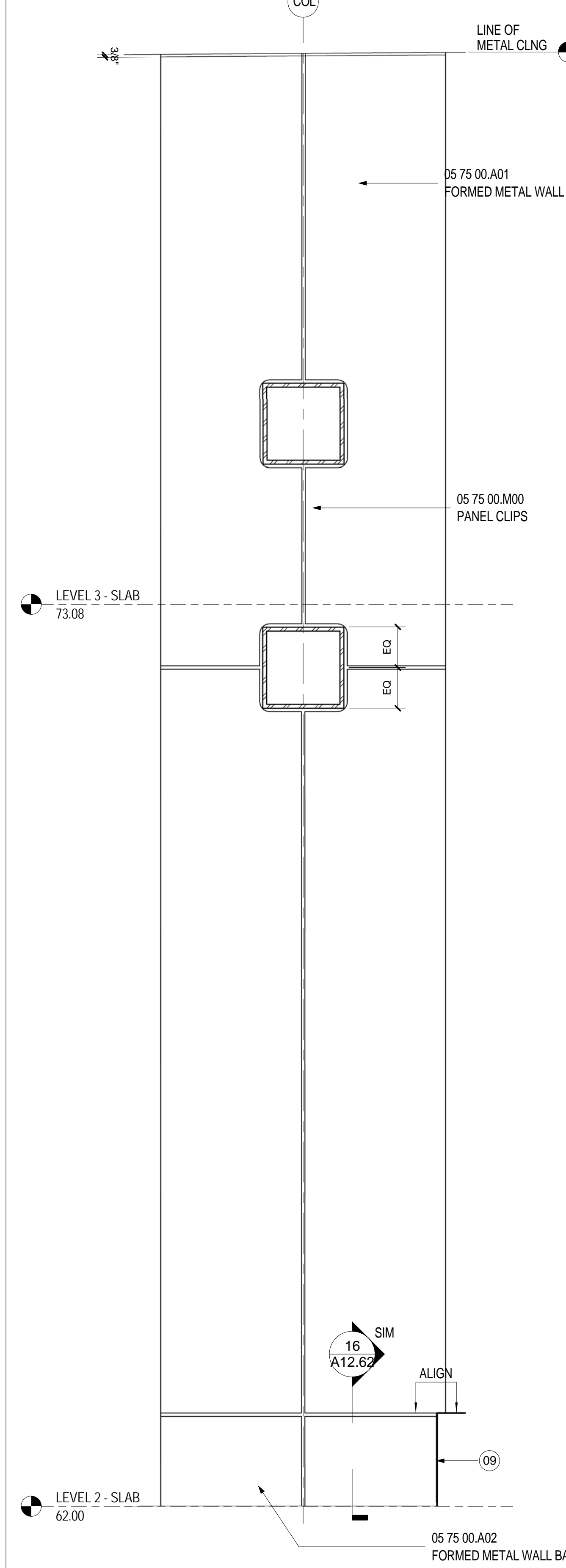
**ELEV OF COL @ TKT HALL PILASTER**  
SCALE: 1" = 1'-0" A12.70



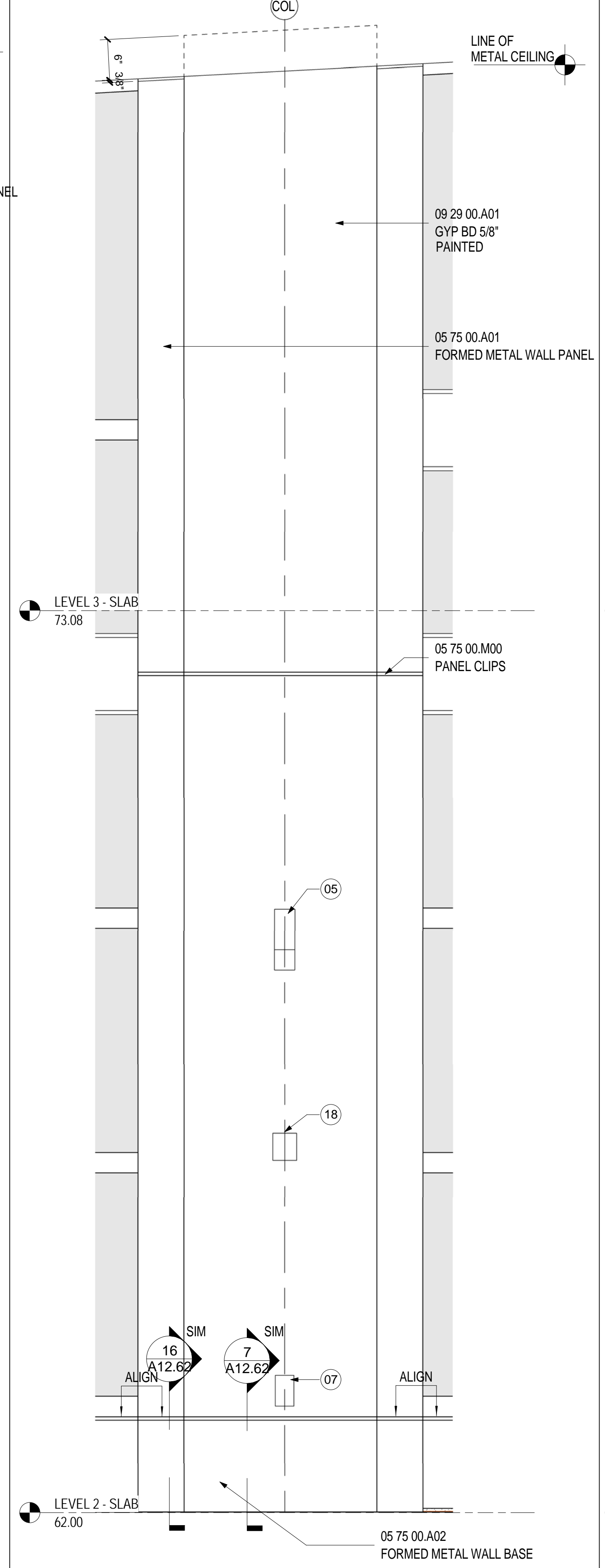
**SIDE ELEV TYP. COL**  
SCALE: 1" = 1'-0" A12.70



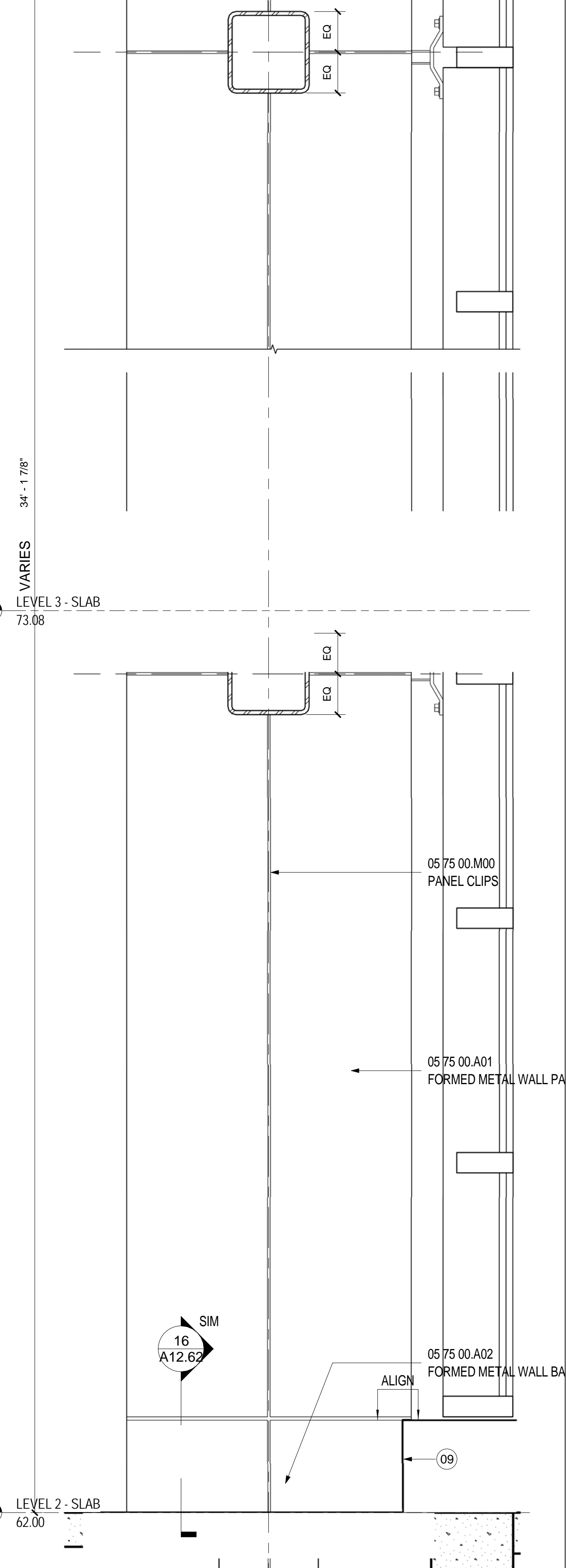
**ELEV OF TYP. COL @ TKT HALL**  
SCALE: 1" = 1'-0" A12.70



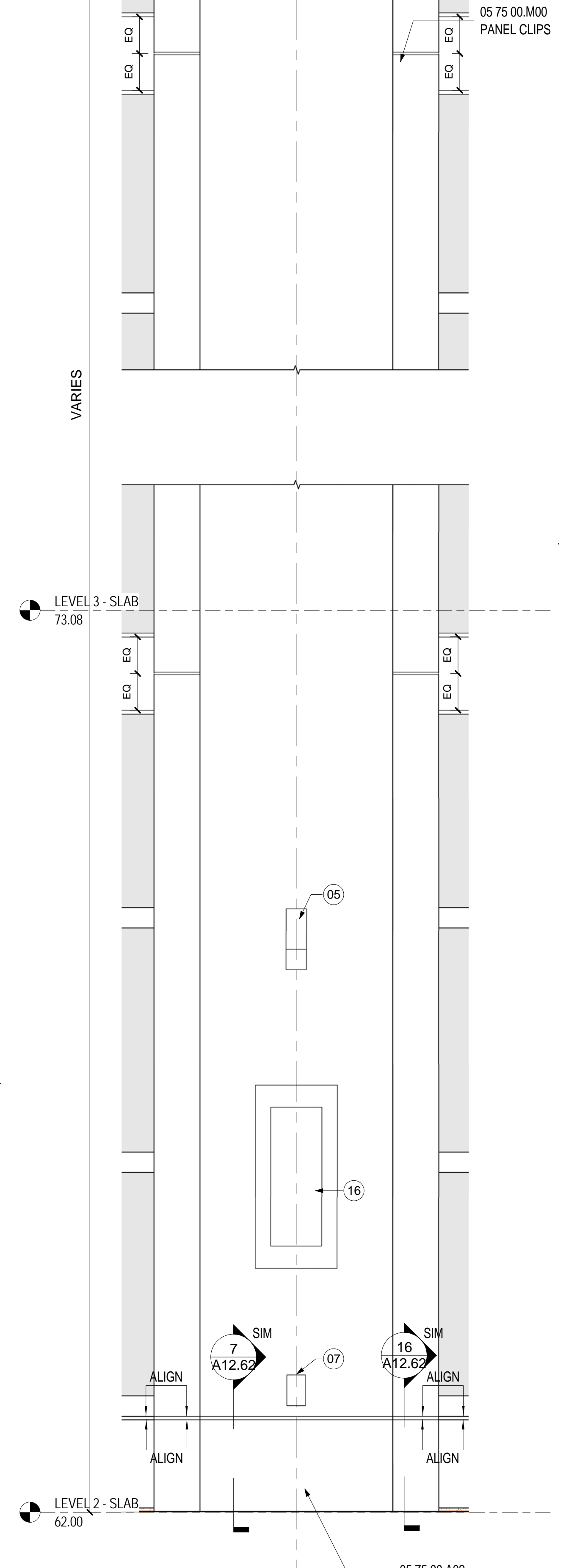
**SIDE ELEV OF COL @ TKT HALL**  
SCALE: 1" = 1'-0" A12.01



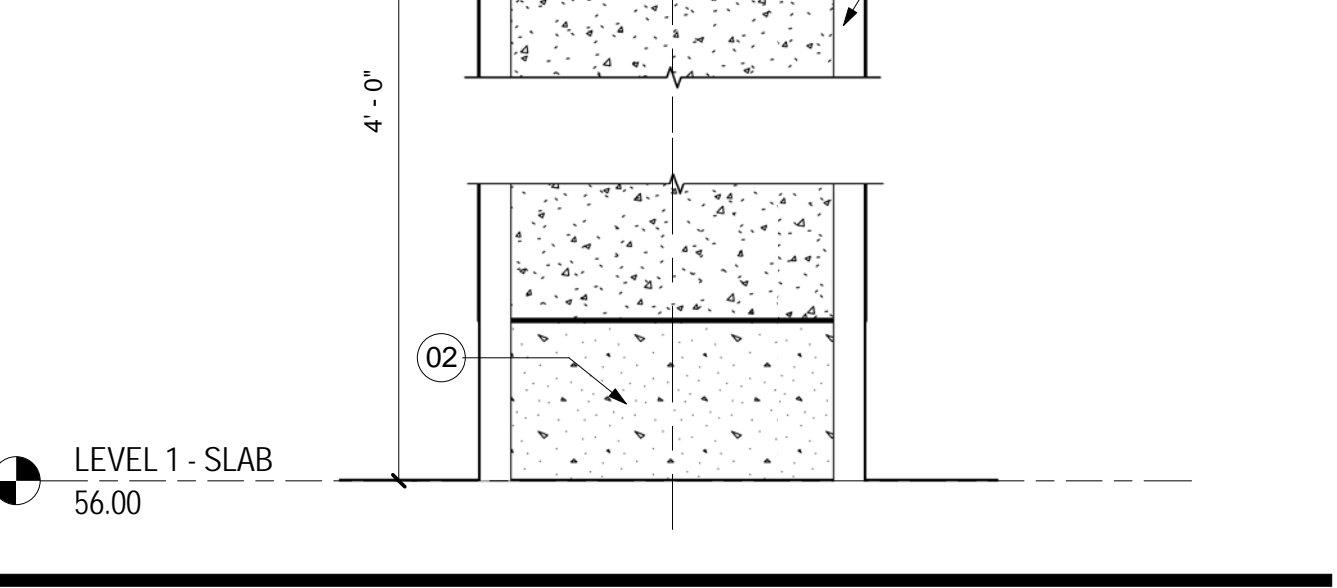
**ELEV OF COL @ TKT. HALL**  
SCALE: 1" = 1'-0" A12.01



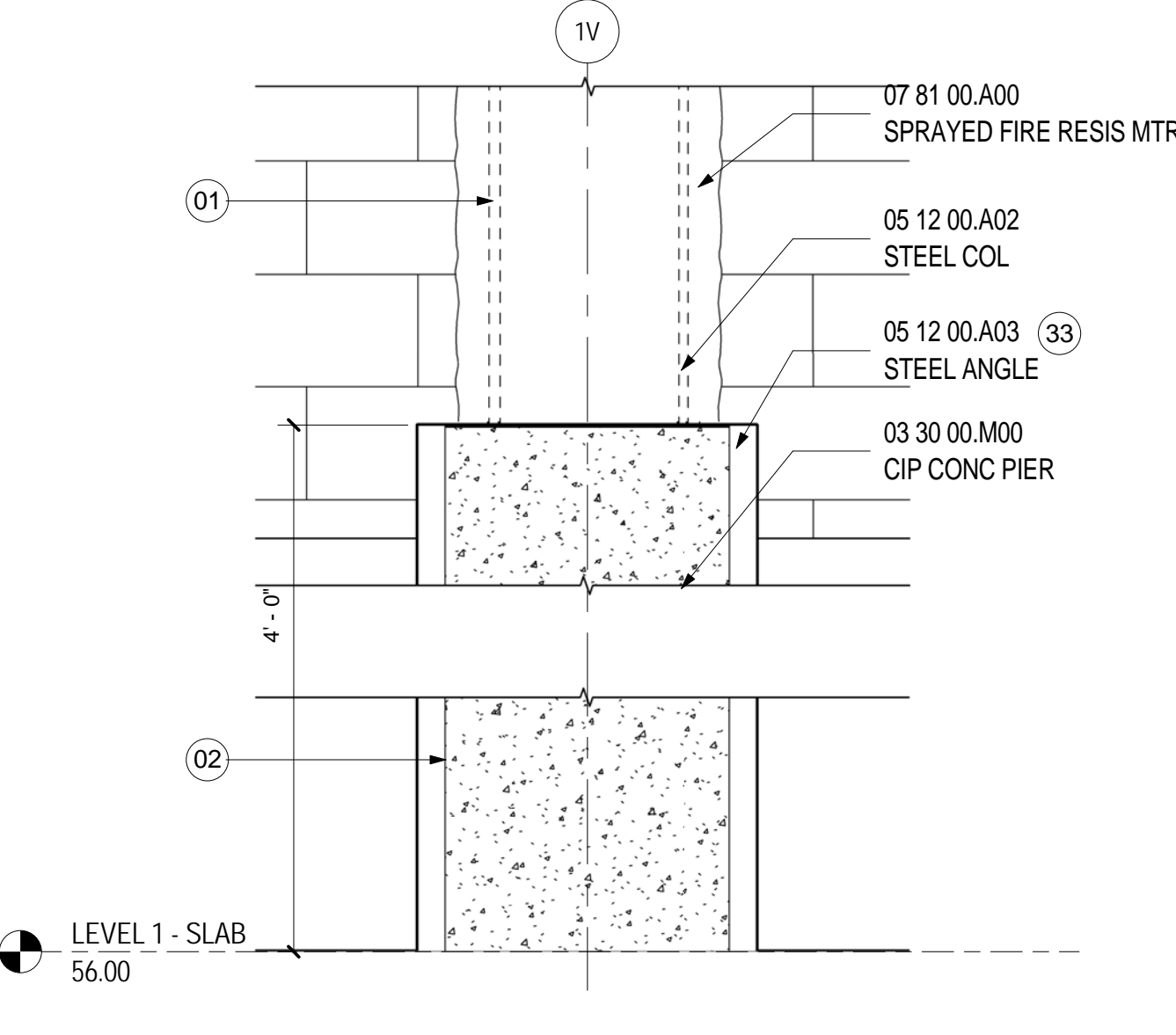
**SIDE ELEV TYP. COL**  
SCALE: 1" = 1'-0" A12.70



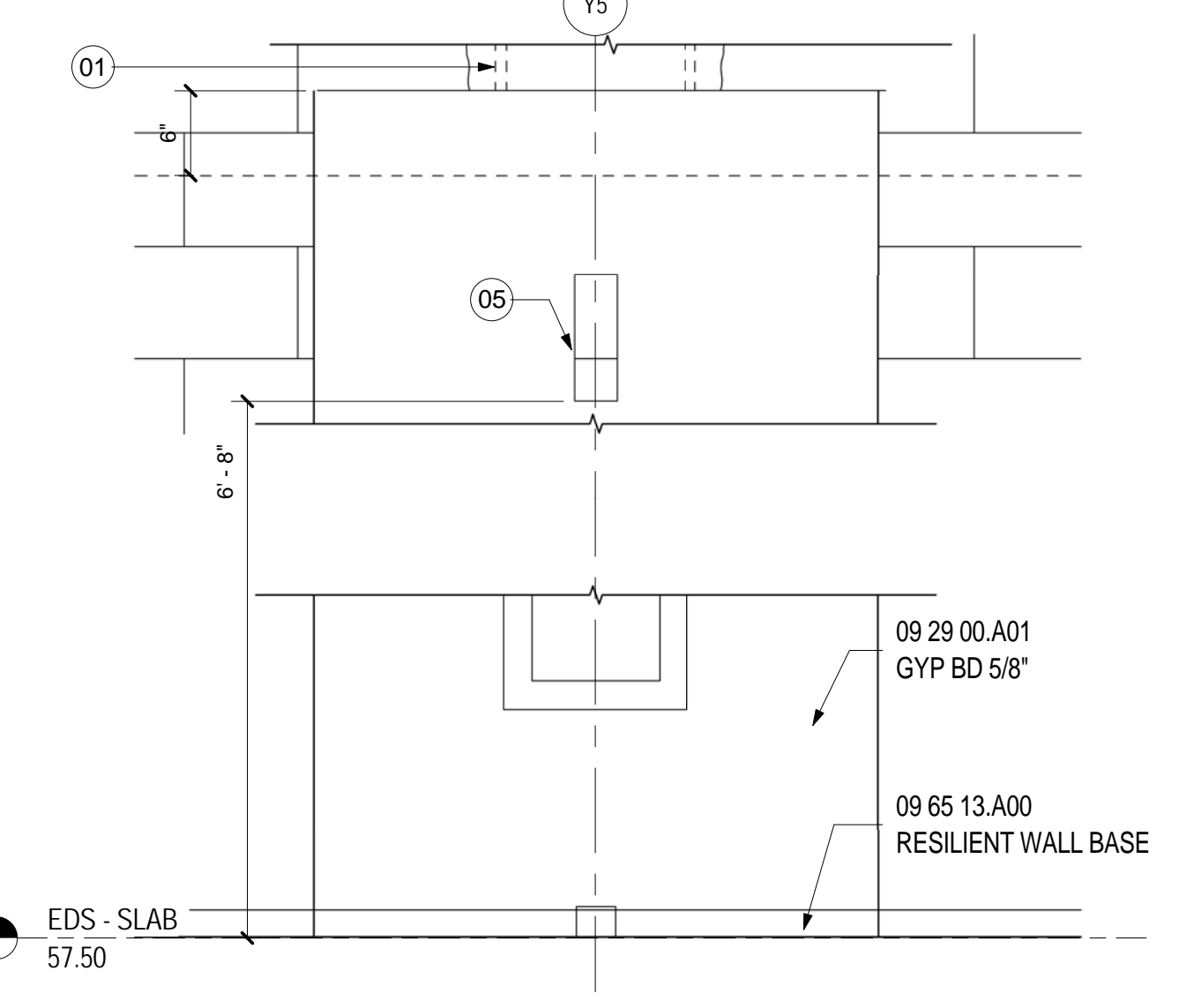
**ELEV OF TYP. COL @ TKT HALL**  
SCALE: 1" = 1'-0" A12.70



**COL @ BAG OUTBOUND**  
SCALE: 1" = 1'-0" A12.70



**COL @ BAG OUTBOUND S. WALL**  
SCALE: 1" = 1'-0" A12.70



**COL @ ETD RM.**  
SCALE: 1" = 1'-0" A10.02

- SHEET NOTES**
- STRUCTURAL STEEL
  - EXISTING PIER WHERE OCCURS.
  - CONTRACTION/CONSTRUCTION JOINT. RE: STRUCTURAL ENGINEER DRAWINGS FOR MORE INFORMATION.
  - RAIN LEADER WHERE OCCURS. REF: PLUMBING PLANS FOR LOCATIONS.
  - STROBE (AS APPLICABLE)
  - BREAK METAL PAINTED P-02.
  - WALL OUTLET (AS APPLICABLE)
  - 6" ROOF LEADER WHERE OCCURS. REF: PLUMBING PLANS FOR LOCATIONS.
  - FIN TUBE ENCLOSURE. RE: MECHANICAL DRAWINGS FOR FIN TUBE INFORMATION.
  - GATE SIGNAGE FLAG. RE: A07 SERIES SIGNAGE DRAWINGS
  - SCHEDULED SPEAKER WHERE OCCURS. REFER TO AV DRAWINGS FOR ADDITIONAL INFORMATION
  - 30% OPEN AREA PERFORATED METAL INSERT. COLOR TO MATCH ADJACENT PAINT COLOR
  - PROVIDE BLACK FILLER
  - SCHEDULED FEC DEVICE WHERE OCCURS. REFER TO CONSTRUCTION PLANS FOR LOCATION AND ADDITIONAL INFORMATION
  - LINE OF FOLD IN PLAN
  - SCHEDULED TEMPERATURE SENSOR WHERE OCCURS. REFER TO MECHANICAL DRAWINGS FOR ADDITIONAL INFORMATION
  - SCHEDULED PARTITION. REFER TO CONSTRUCTION PLAN FOR PARTITION TYPE AND ADDITIONAL INFORMATION
  - STRUCTURAL PIER. REFER TO STRUCTURAL DRAWINGS FOR ADDITIONAL INFORMATION
  - GLU LAM. REFER TO STRUCTURAL DRAWINGS FOR ADDITIONAL INFORMATION
  - 1/4" AESS COVER PLATE
  - DASHED LINE REPRESENT WELDED SEAM. TYPICAL LOCATION TO BE ALONG THE CENTERLINE OF TAPERED STRUCTURAL STEEL
  - SCHEDULED LIGHT FIXTURE. RE: PROJECT MANUAL FOR MORE INFORMATION.
  - GLU LAM BRACKET. REFER TO STRUCTURAL DRAWINGS FOR ADDITIONAL INFORMATION
  - OPEN TOP TO ALLOW FOR CONNECTION TO STRUCTURAL STEEL COLUMN
  - LINE OF COLUMN ENCLOSURE AND LIGHT COVE BELOW
  - AESS ENCLOSURE TO EXTEND BEYOND ROUND ENCLOSURE
  - TAPERED STRUCTURAL STEEL. REFER TO STRUCTURAL DRAWINGS FOR ADDITIONAL INFORMATION
  - LIGHT COVE SHIELD. COORDINATE HEIGHT WITH SELECTED LIGHT FIXTURE MANUFACTURES DIMENSIONS
  - COORDINATE CLEAR WIDTH AND HEIGHT WITH SELECTED LIGHT FIXTURE MANUFACTURES DIMENSIONS
  - MOCK UP: AESS TREE COLUMN
  - EMBED ANGLE
  - STRUCTURAL WIND GIRT. MAINTAIN 3/4" REVEAL AROUND STEEL
  - MULLION BEYOND
  - PRECAST PANEL TO RUN 2" ABOVE 6" STUD IN METAL SOFFIT ASSEMBLY

- GENERAL NOTES**
- COLUMN COVERS GENERALLY TO BE 6" ABOVE FINISHED CEILING
  - REFER TO A00.13 FOR DEVICE MOUNTING HEIGHT. COORDINATE WITH APPROVED CUT SHEET FOR OPENING SIZE
  - REFER TO ELEVATIONS FOR LOCATION OF REVEALS
  - REFER TO SHEET A00.13 FOR TYPICAL MOUNTING HEIGHTS. U. O. N.

**Portland International Jetport**  
1001 Westbrook Street  
Portland, Maine 04102

2020 K Street, Northwest  
Suite 200  
Washington DC 20006  
Telephone 202.721.5200  
Facsimile 202.872.8587

**Gensler**

Date	Description
01/23/09	95% CONSTRUCTION DOCUMENTS
10/26/09	ISSUED FOR PERMIT
145 09/01/11	ISSUED FOR CONSTRUCTION

Seal/Signature

**Project Name**  
PWM Terminal Enhancement

**Project Number**  
09.6395.000

**Description**  
INTERIOR COLUMN DETAILS

**Scale**  
As indicated

**A12.71**

© 2009 Gensler