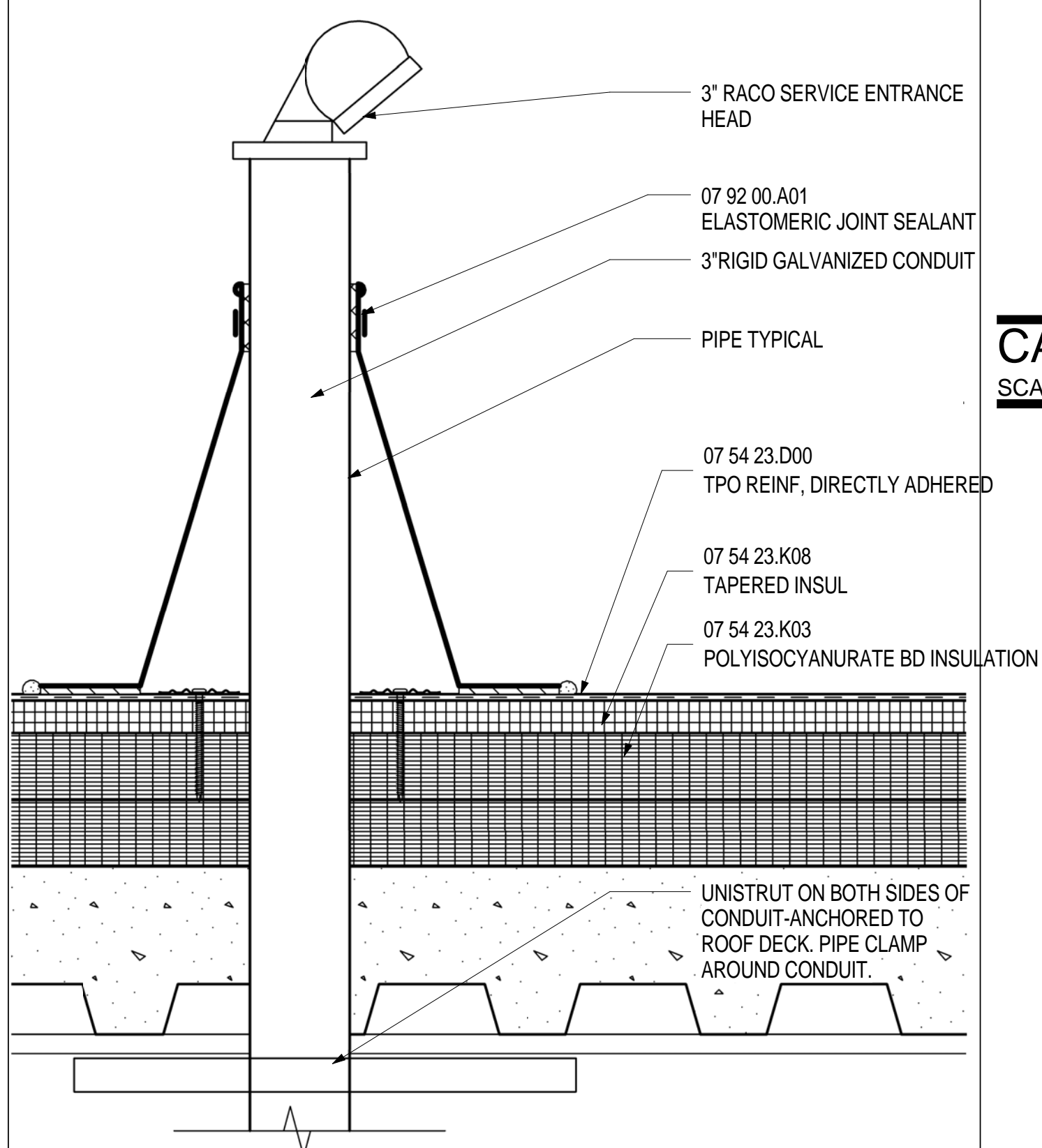
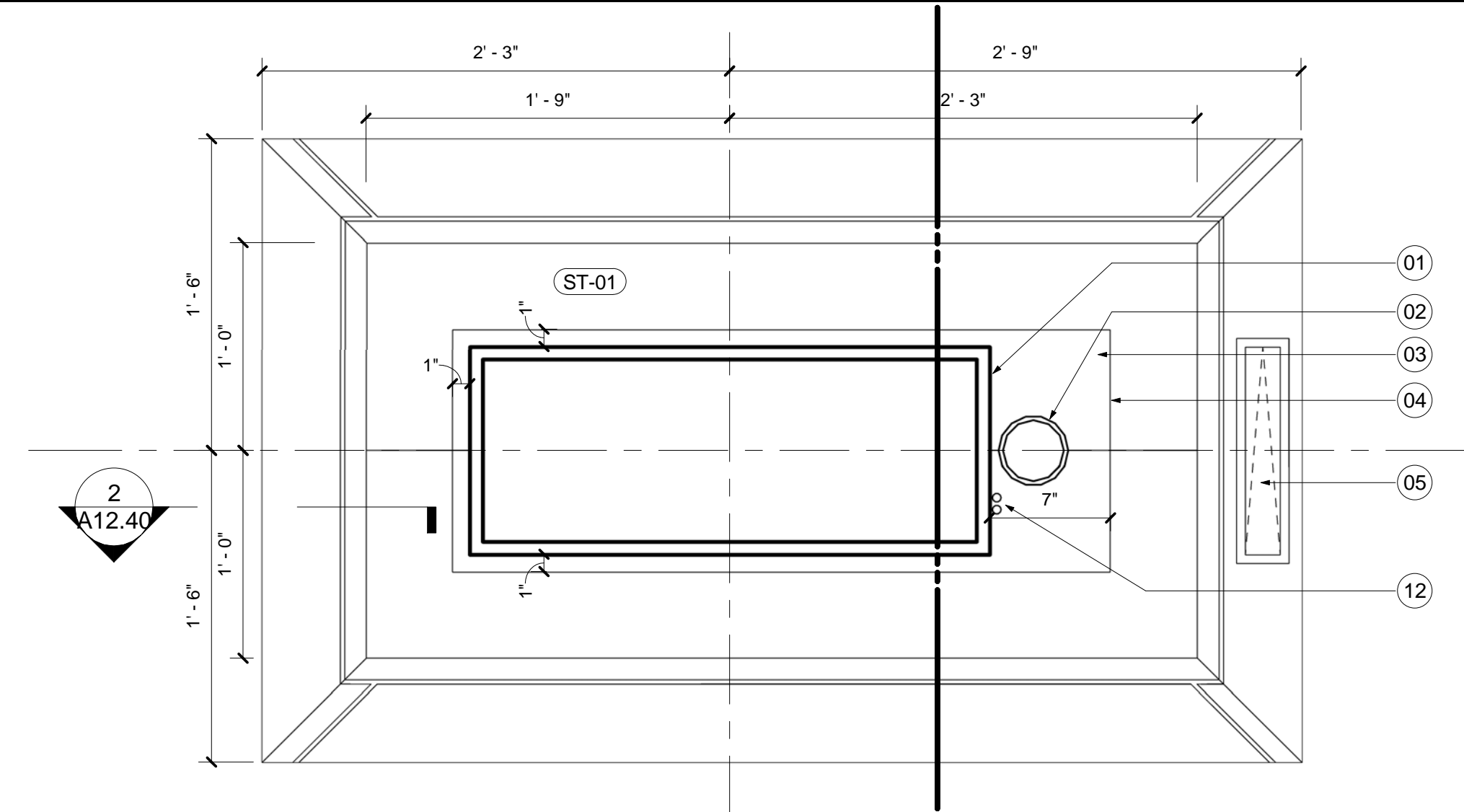


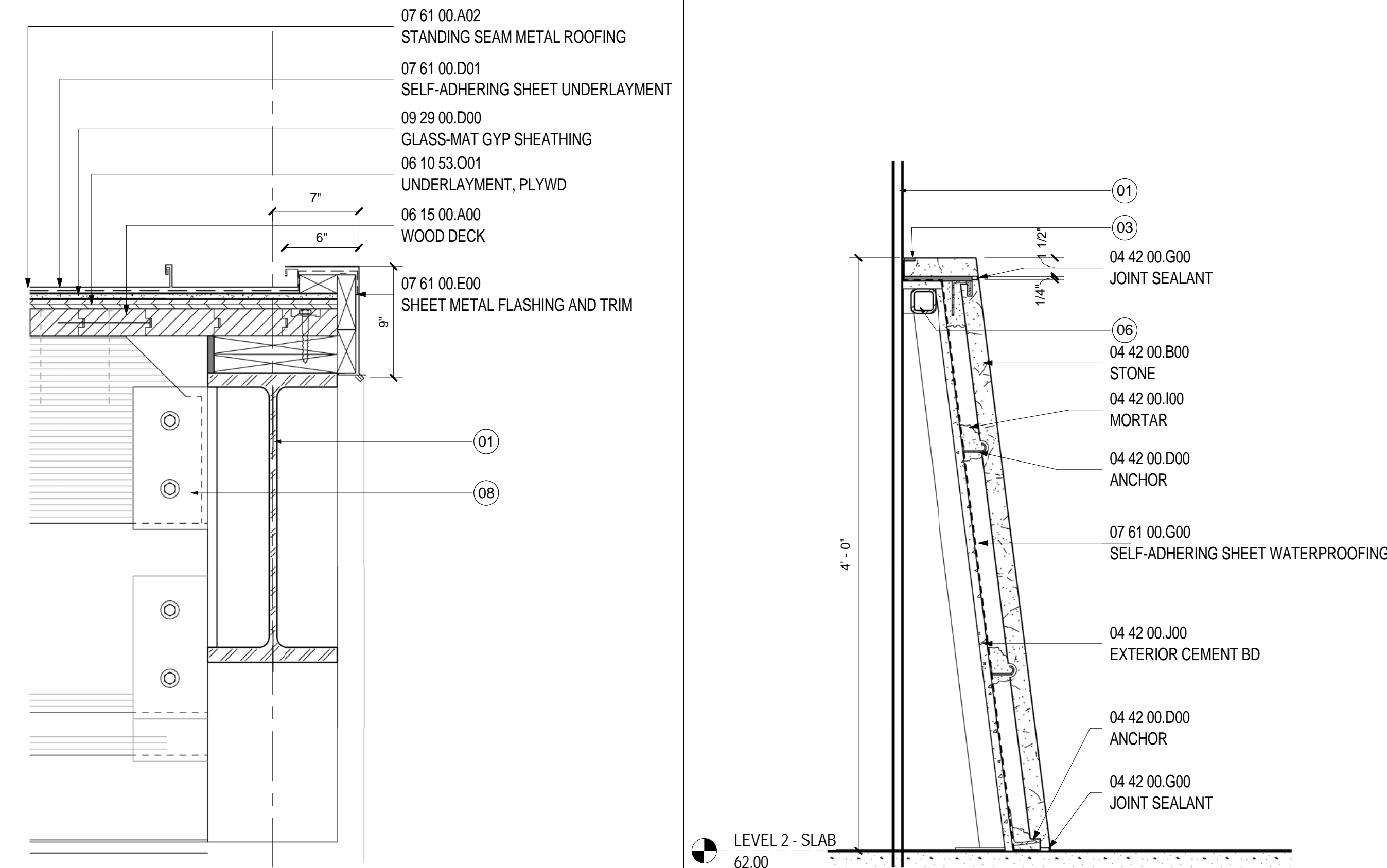
**CANOPY DTL- CENTER BEAM**  
SCALE: 1 1/2" = 1'-0" A09.70 **6**



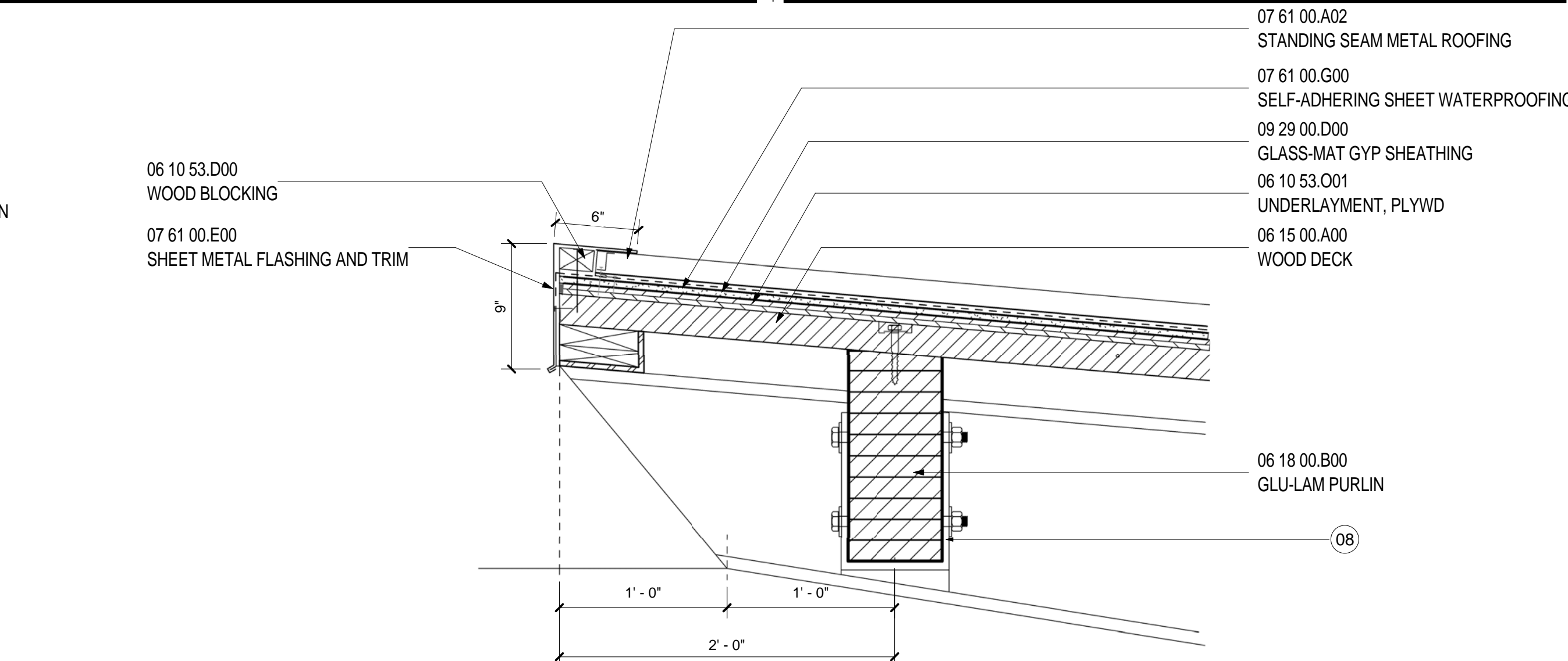
**PIPE FLASHING FOR ANTENNA**  
SCALE: 3" = 1'-0" A09.14 **7**



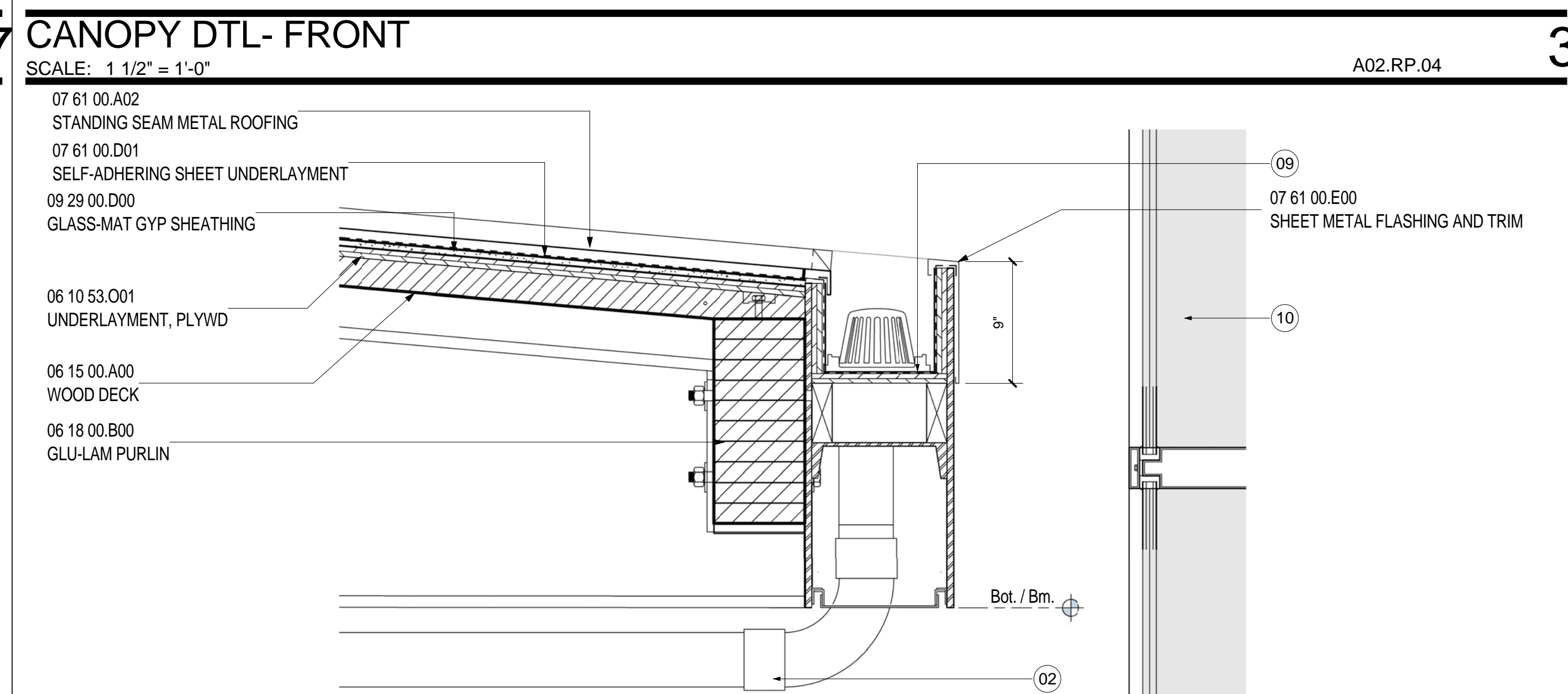
**STONE BASE @ CANOPY**  
SCALE: 1 1/2" = 1'-0" A09.70 **1**



**SECTION @ STONE BASE**  
SCALE: 1 1/2" = 1'-0" A12.40 **2**



**CANOPY DTL- END**  
SCALE: 1 1/2" = 1'-0" A02.RP.04 **5**



**CANOPY DTL- FRONT**  
SCALE: 1 1/2" = 1'-0" A02.RP.04 **3**

**CANOPY DTL- REAR**  
SCALE: 1 1/2" = 1'-0" A02.RP.04 **4**

**SHEET NOTES**

- 01 PAINTED AESS. RE: STRUCTURAL DRAWINGS FOR ADDITIONAL INFORMATION
- 02 PAINTED RAIN LEADER WITH HEAT TRACE. RE: PLUMBING DRAWINGS FOR MORE INFORMATION
- 03 STEEL ENCLOSURE PLATE TO BE INSET FLUSH INTO STONE AND PAINT P-02. NO EXPOSED FASTENERS
- 04 BUTT JOINT
- 05 LOCKABLE STAINLESS STEEL ACCESS PANEL
- 06 STAINLESS STEEL TUBE FRAMING AS REQUIRED
- 07 BLOCKING AS REQUIRED
- 08 STRUCTURAL CONNECTION PAINTED TO MATCH TAPER COLUMN. REFER TO STRUCTURAL STEEL DRAWINGS FOR ADDITIONAL INFORMATION
- 09 STAINLESS STEEL GUTTER: SLOPED 1/8" PER FOOT MIN.
- 10 CURTAIN WALL REFER TO A09.00 SERIES FOR ADDITIONAL INFORMATION
- 11 SCHEDULED LIGHT FIXTURE: COORDINATE CONDUIT RUNS AND MOUNTING
- 12 CONDUITS FOR LIGHTING AND SPEAKERS TO RUN TIGHT TO AESS. ALL EXPOSED CONDUIT TO BE PAINTED TO MATCH AESS. COORDINATE NUMBER AND ROUTING AS REQUIRED.

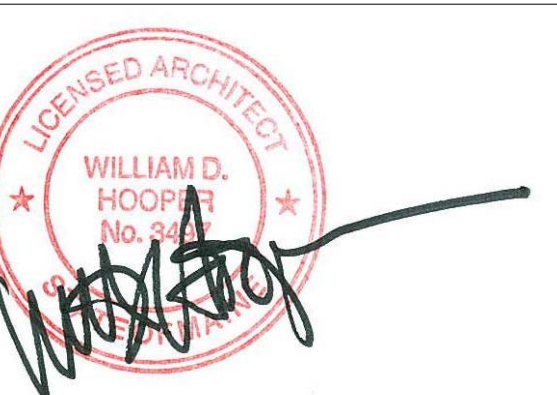
**GENERAL NOTES**

Portland International  
Jetport  
1001 Westbrook Street  
Portland, Maine 04102

**Gensler**  
2020 K Street, Northwest  
Suite 200  
Washington DC 20006  
Telephone 202.721.5200  
Facsimile 202.872.8587

Date	Description
01/23/09	95% CONSTRUCTION DOCUMENTS
10/26/09	ISSUED FOR PERMIT
145 09/01/11	ISSUED FOR CONSTRUCTION

Seal/Signature



Project Name  
PWM Terminal Enhancement

Project Number  
09.6395.000

Description  
CANOPY DETAILS

Scale  
As indicated

**A12.40**

© 2009 Gensler