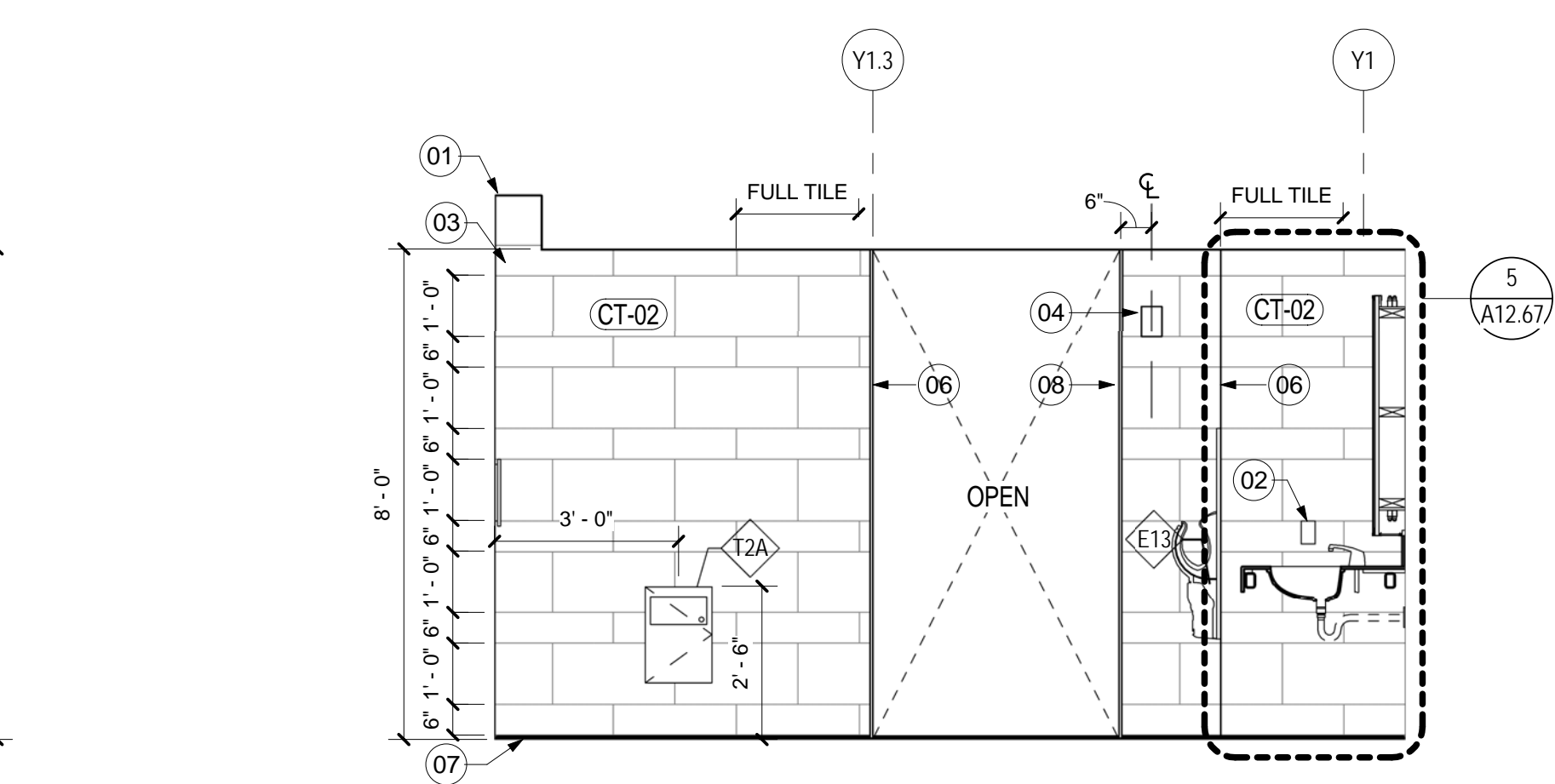
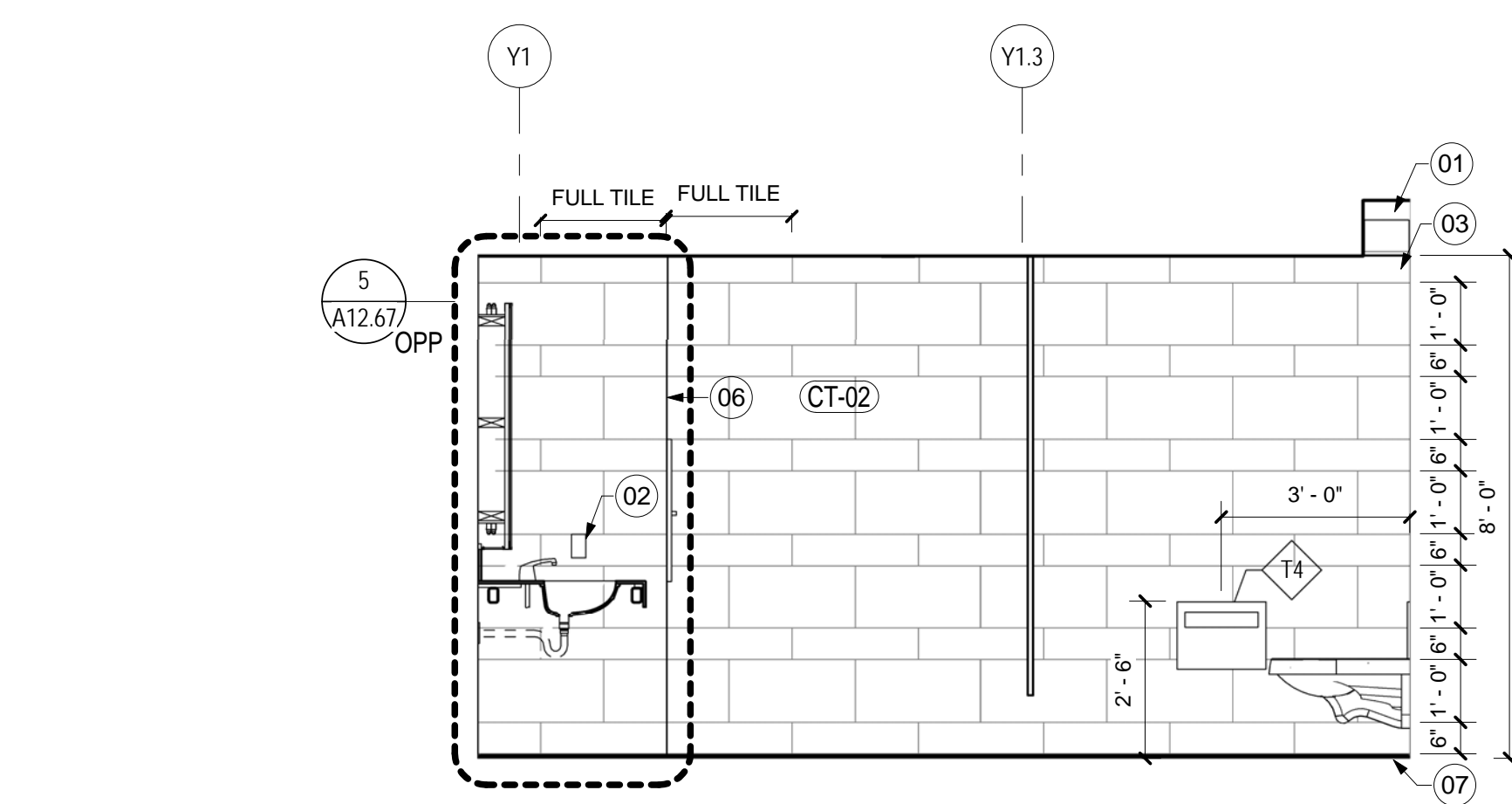


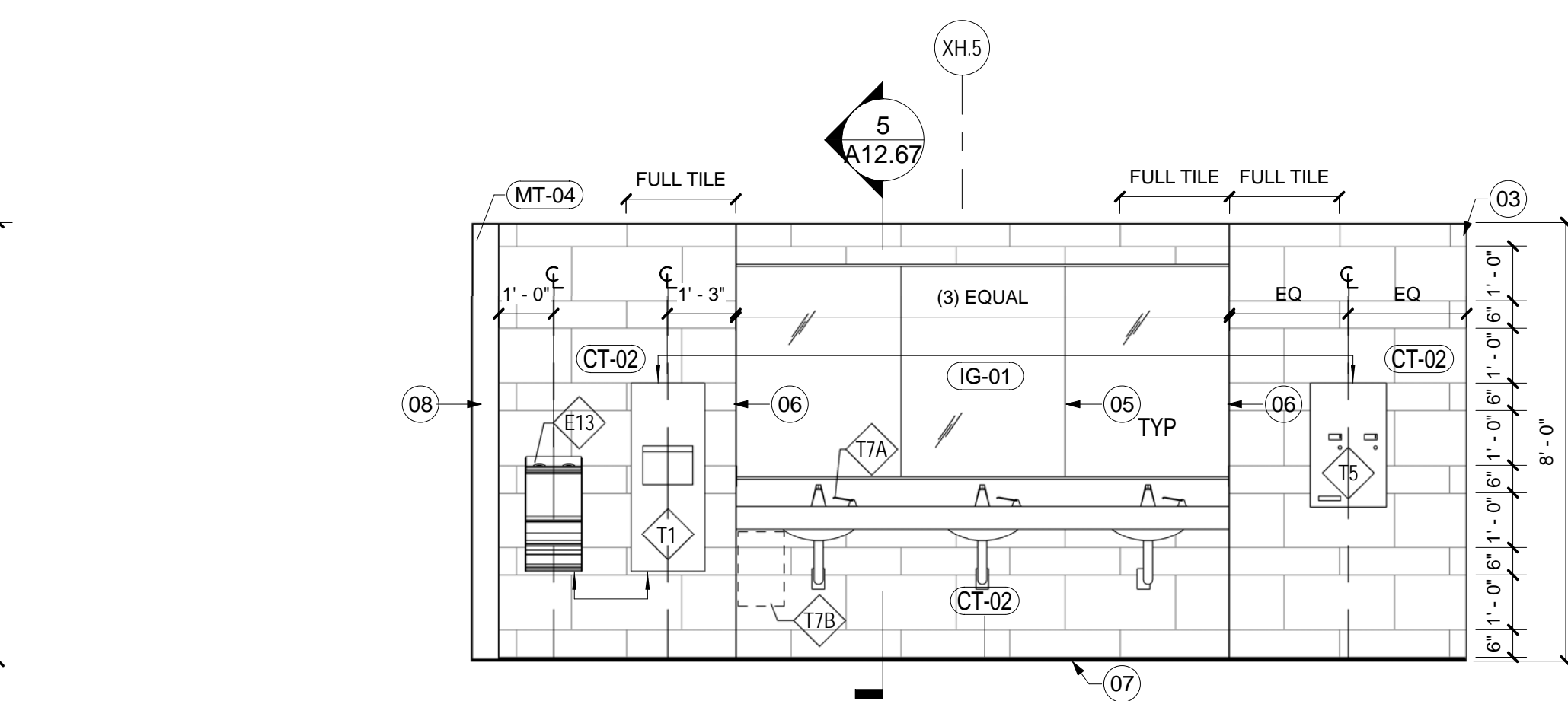
WOMENS 1516 - NORTH VANITY
SCALE: 3/8" = 1'-0" A08.00



1D WOMENS 1516 - NORTH
SCALE: 3/8" = 1'-0" A08.00



1C WOMENS 1516 - SOUTH
SCALE: 3/8" = 1'-0" A08.00



1B WOMENS 1516 - EAST
SCALE: 3/8" = 1'-0" A08.00

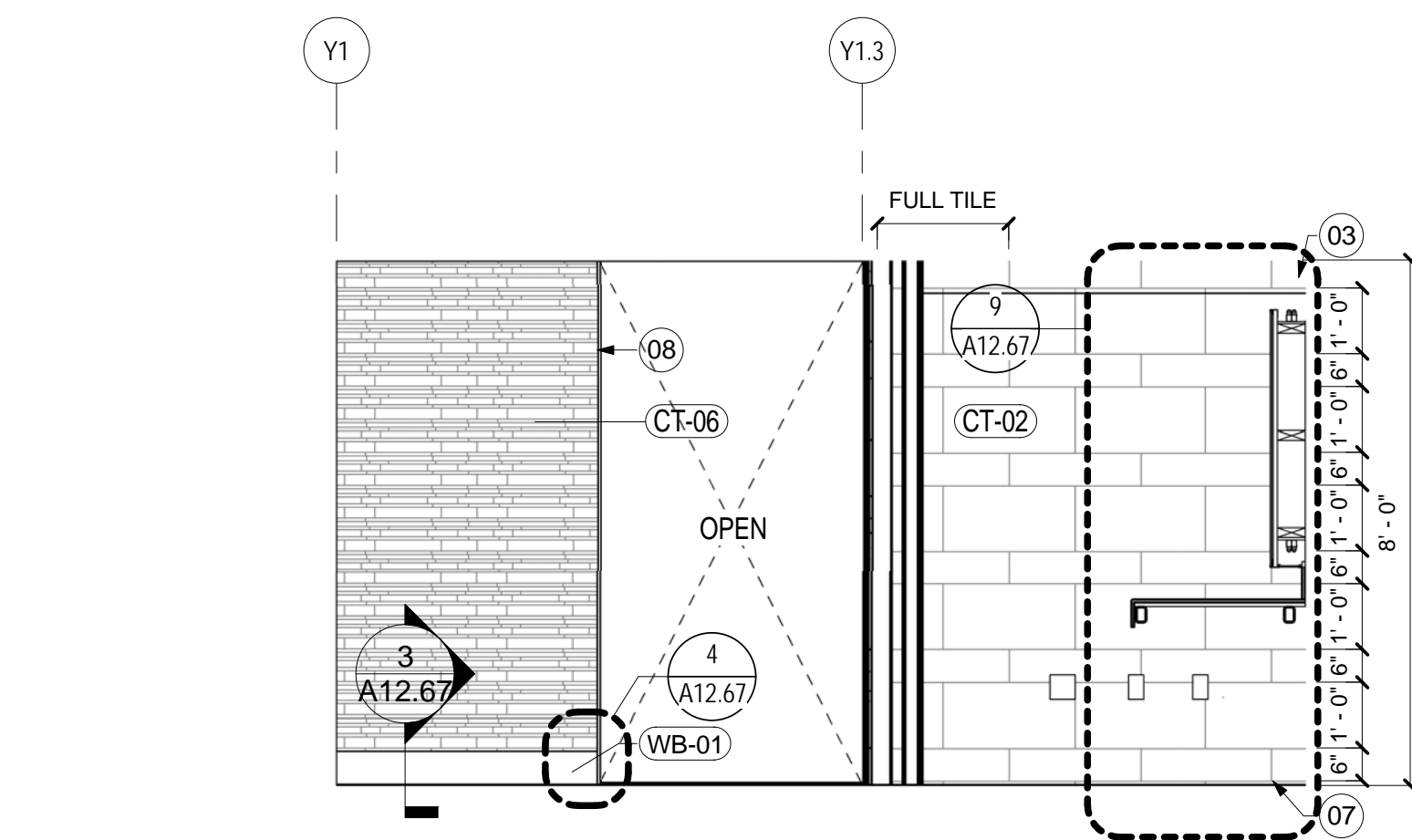
SHEET NOTES

- SCHEDULED LIGHT FIXTURE.
- GFI RECPETACLE MOUNTED VERTICALLY AT 42" AFF MAX. ALIGN T.O. RECEPTACLE WITH GROUT LINE. RE: DETAIL FOR EXACT LOCATION HORIZONTALLY.
- LOCATION OF CUT TILE.
- STROBE MOUNTED AT 80" AFF CENTERLINE OF DEVICE.
- SEAM OF MIRROR.
- STAINLESS STEEL EDGE PROTECTION PROFILES TYPICAL AT ALL OUTSIDE CORNERS OF TILE. RE: DETAIL 10A12.67.
- STAINLESS STEEL COVE SHAPED WALL/FLOOR TRANSITION. RE: DETAIL 8A12.67
- STAINLESS STEEL MT-04 END CAP

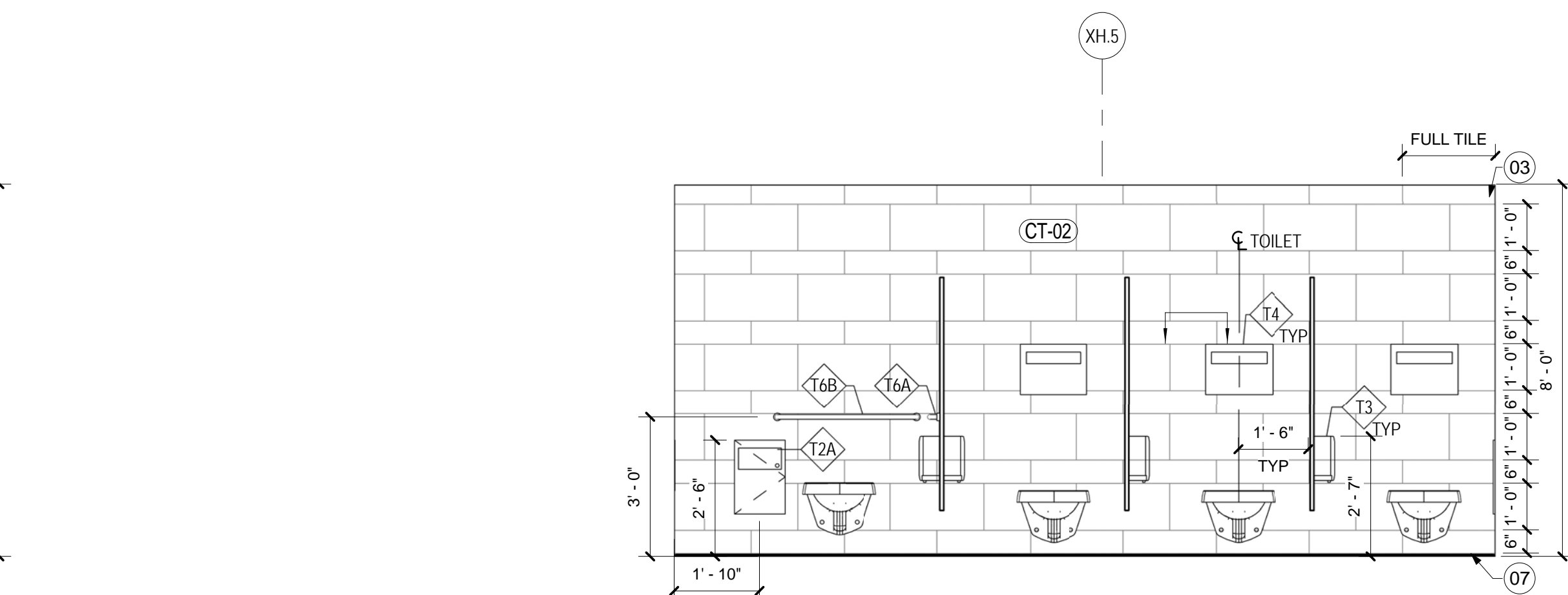
Portland International Jetport
1001 Westbrook Street
Portland, Maine 04102

2020 K Street, Northwest
Suite 200
Washington DC 20006
Telephone 202.221.5200
Facsimile 202.872.8587

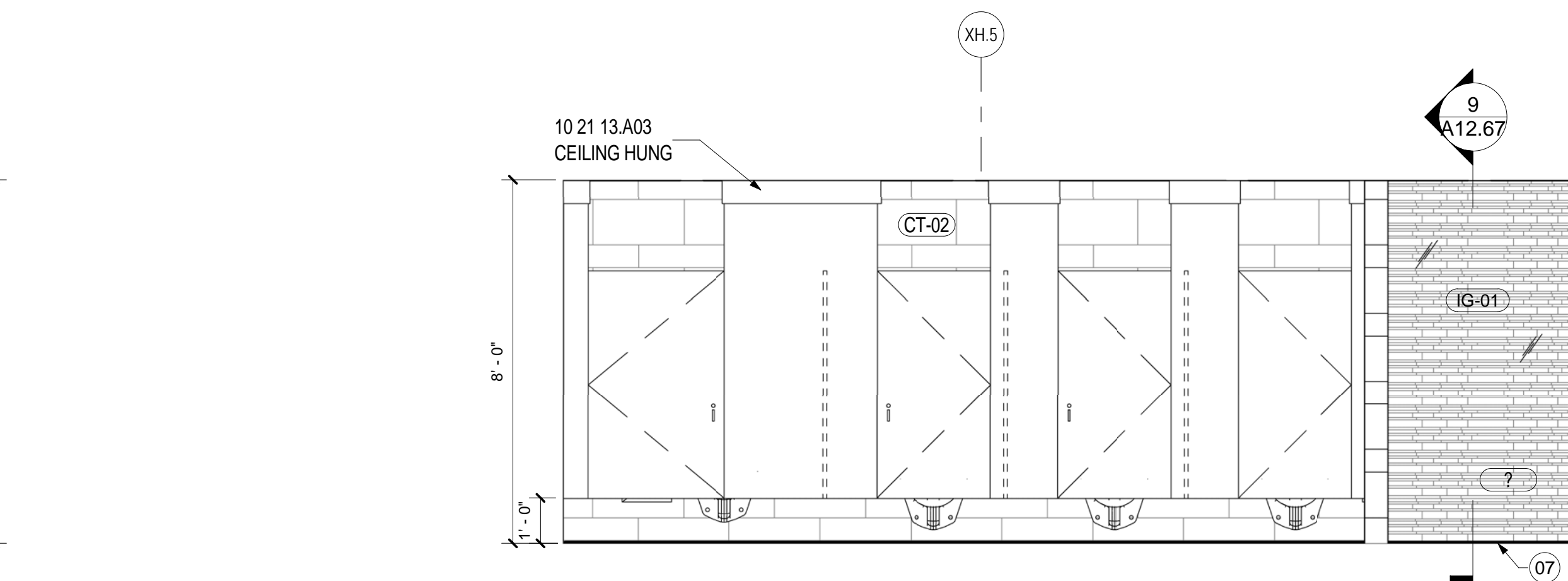
Gensler



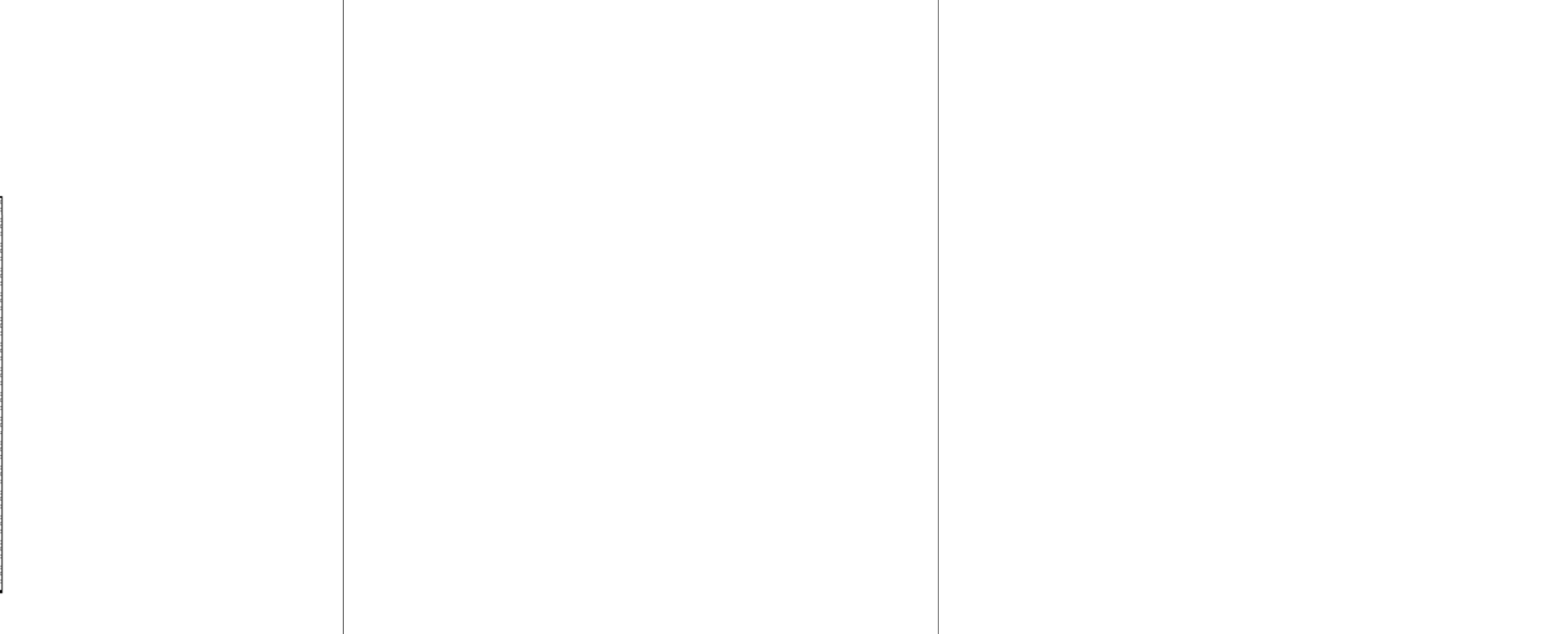
WOMENS 1516 ENTRY
SCALE: 3/8" = 1'-0" A08.00



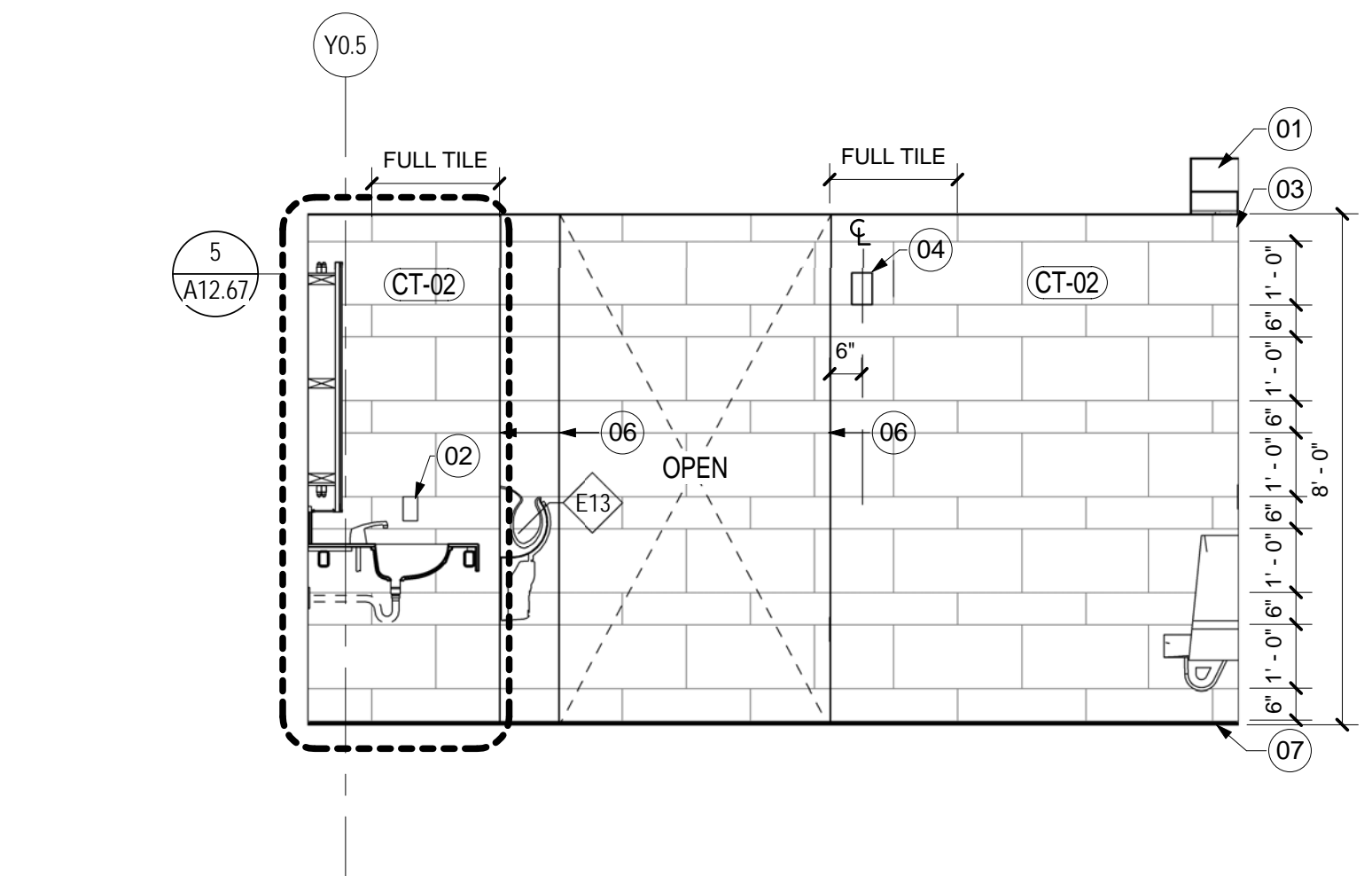
2C WOMENS 1516 - WEST WALL
SCALE: 3/8" = 1'-0" A08.00



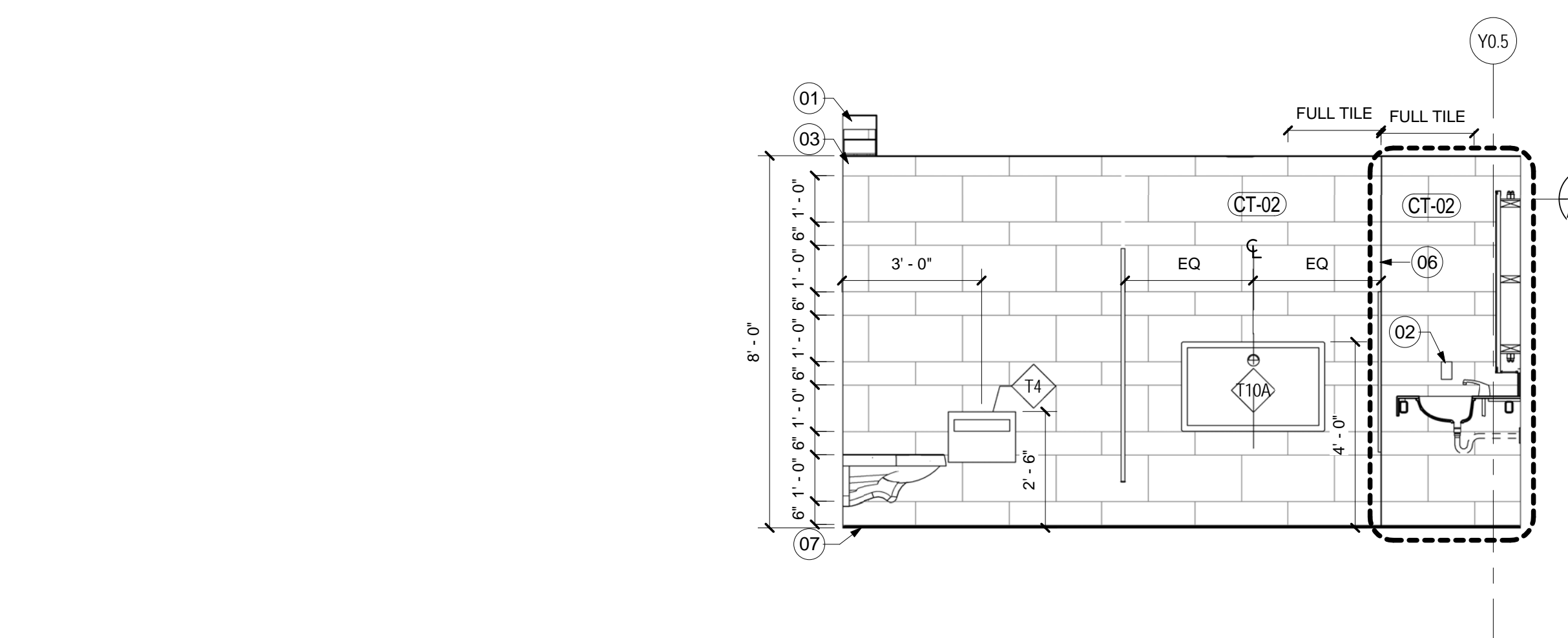
2B WOMENS 1516 - WEST
SCALE: 3/8" = 1'-0" A08.00



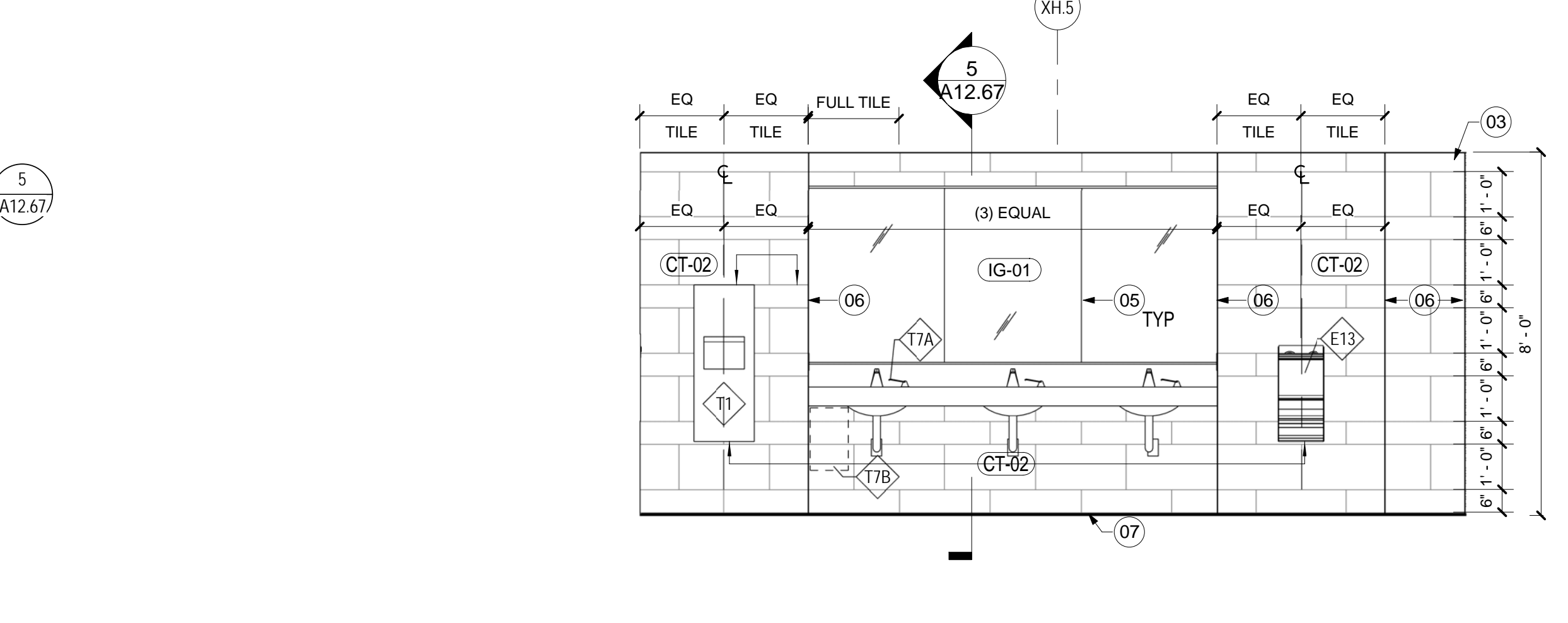
2A WOMENS 1516 - WEST
SCALE: 3/8" = 1'-0" A08.00



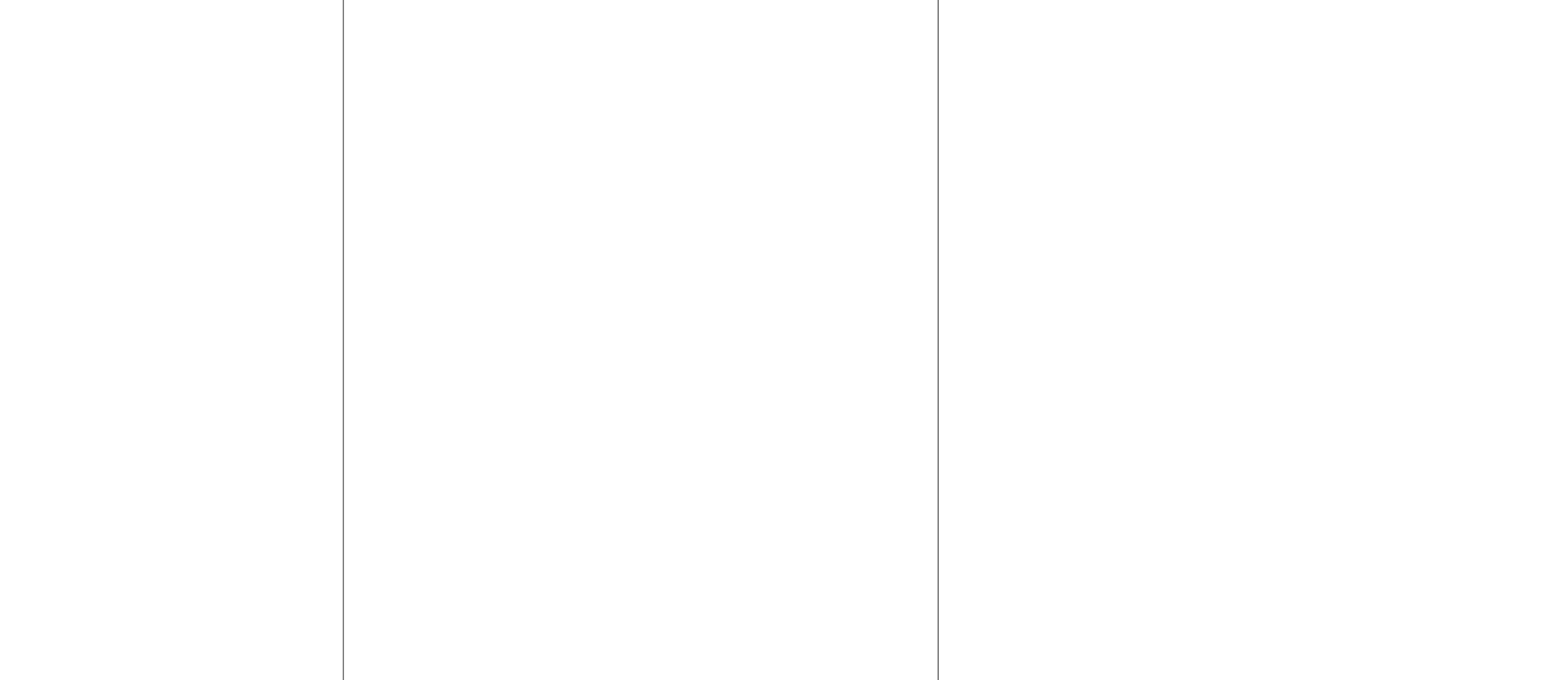
MENS 1513 - NORTH
SCALE: 3/8" = 1'-0" A08.00



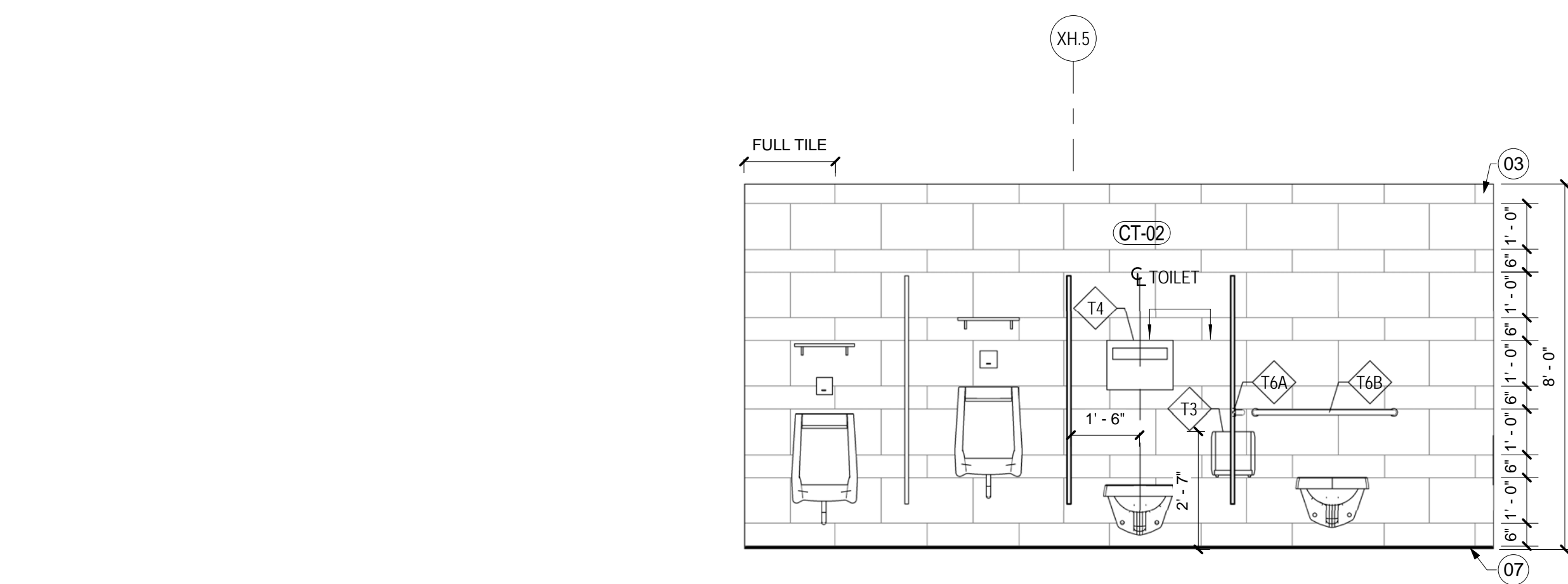
3C MENS 1513 - SOUTH
SCALE: 3/8" = 1'-0" A08.00



3B MENS 1513 - WEST
SCALE: 3/8" = 1'-0" A08.00



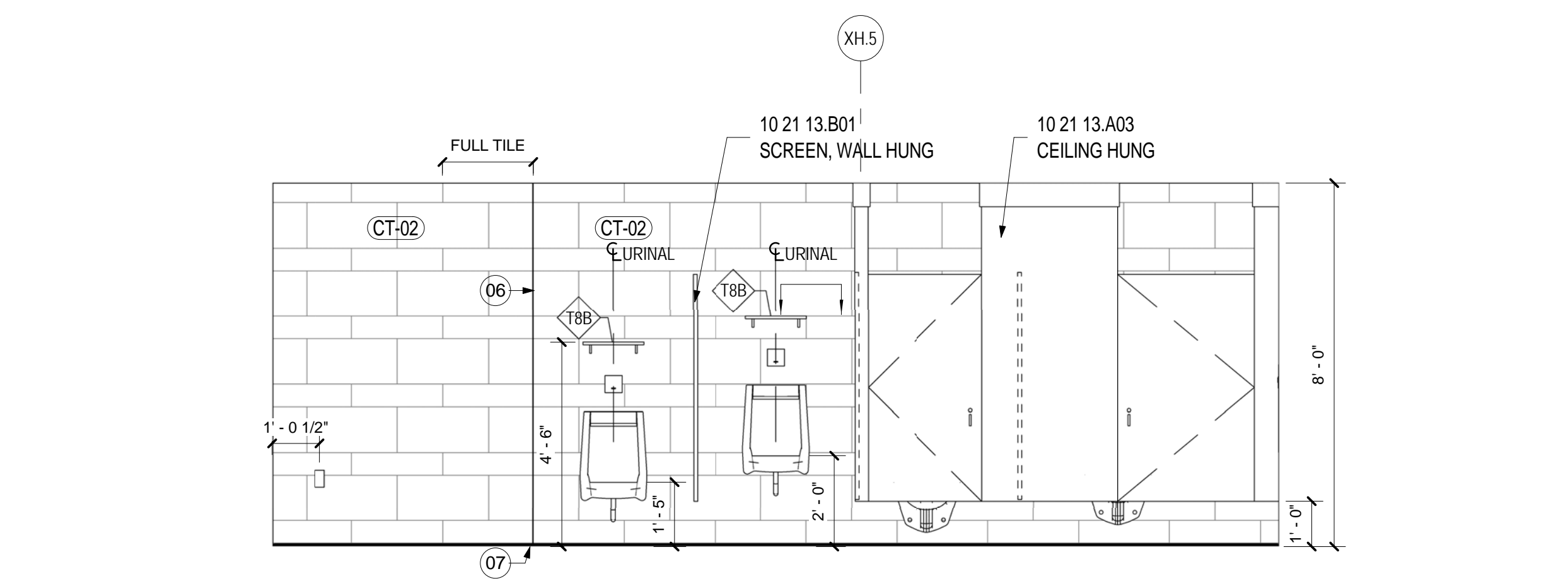
3A MENS 1513 - WEST
SCALE: 3/8" = 1'-0" A08.00



MENS 1513 - EAST WALL
SCALE: 3/8" = 1'-0" A08.00



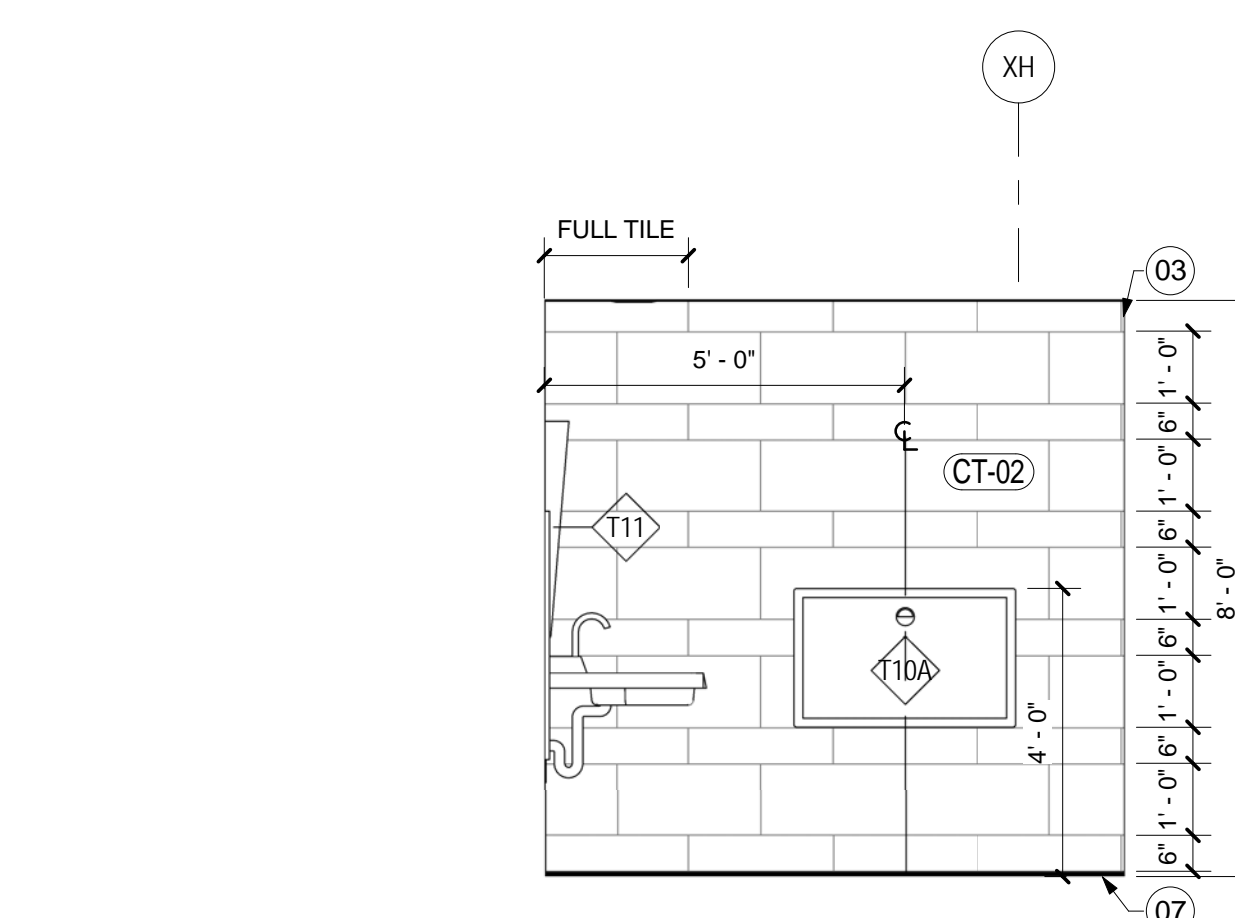
4B MENS 1513 - EAST
SCALE: 3/8" = 1'-0" A08.00



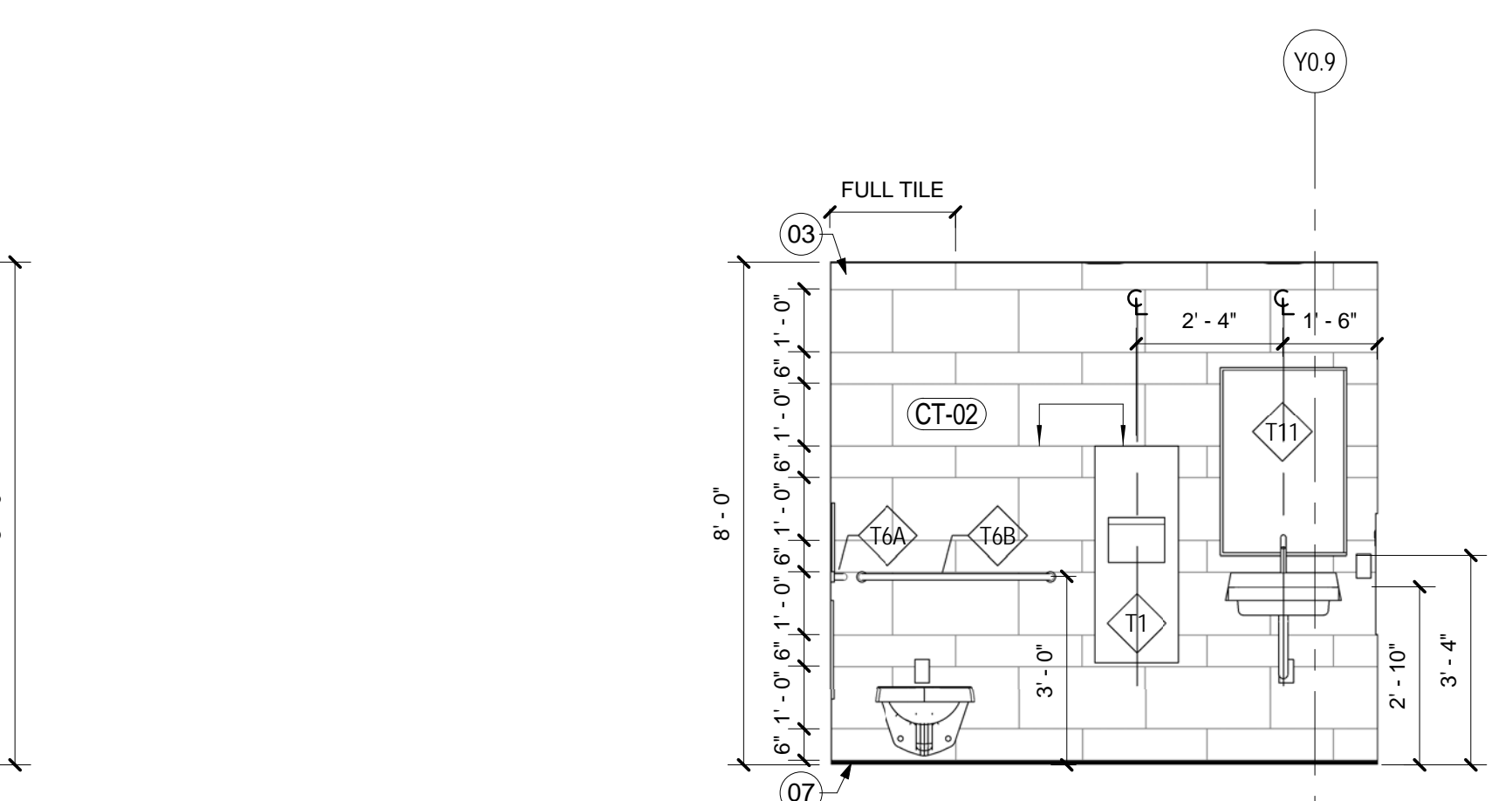
4A MENS 1513 - EAST
SCALE: 3/8" = 1'-0" A08.00



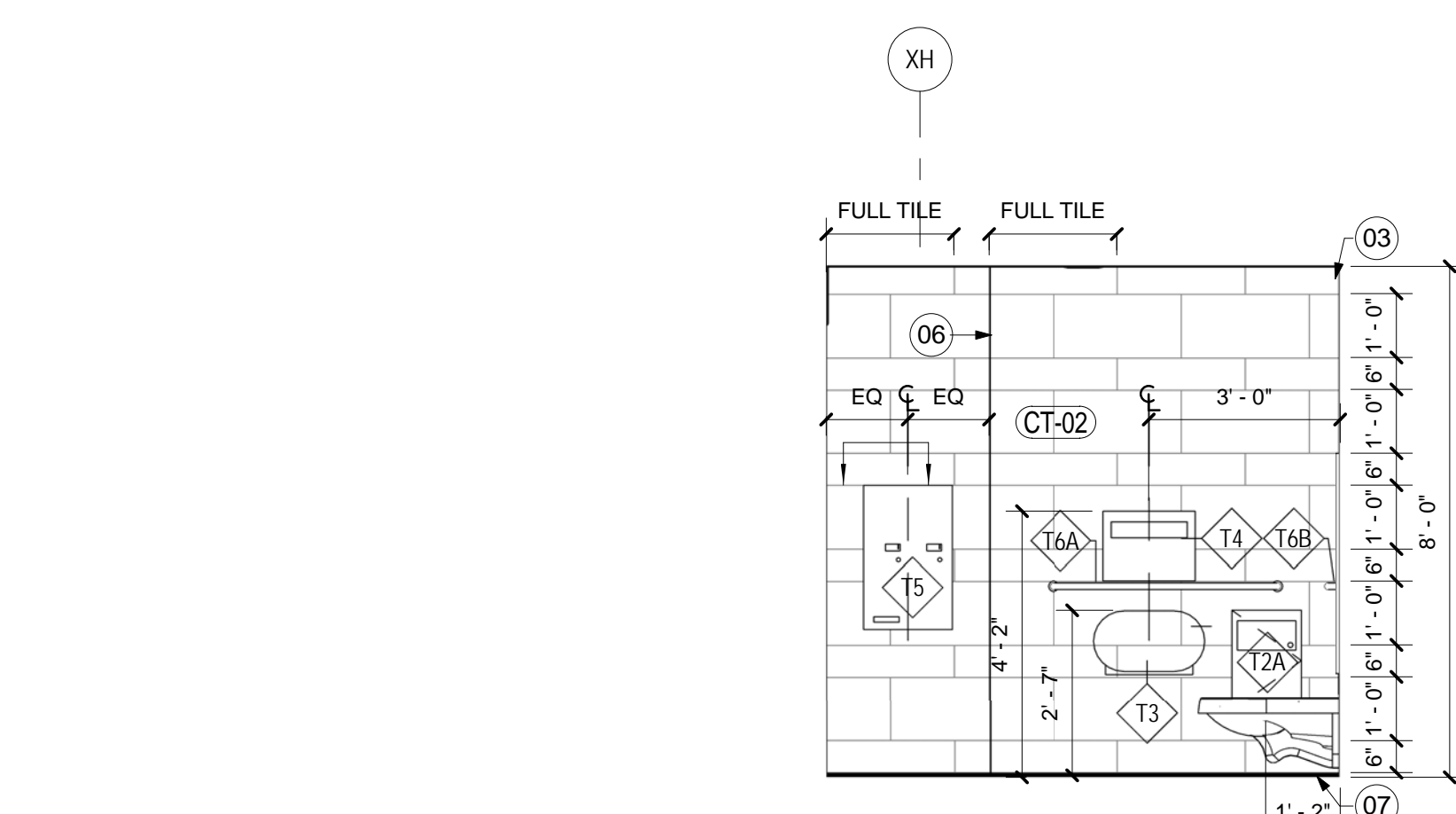
4A MENS 1513 - EAST
SCALE: 3/8" = 1'-0" A08.00



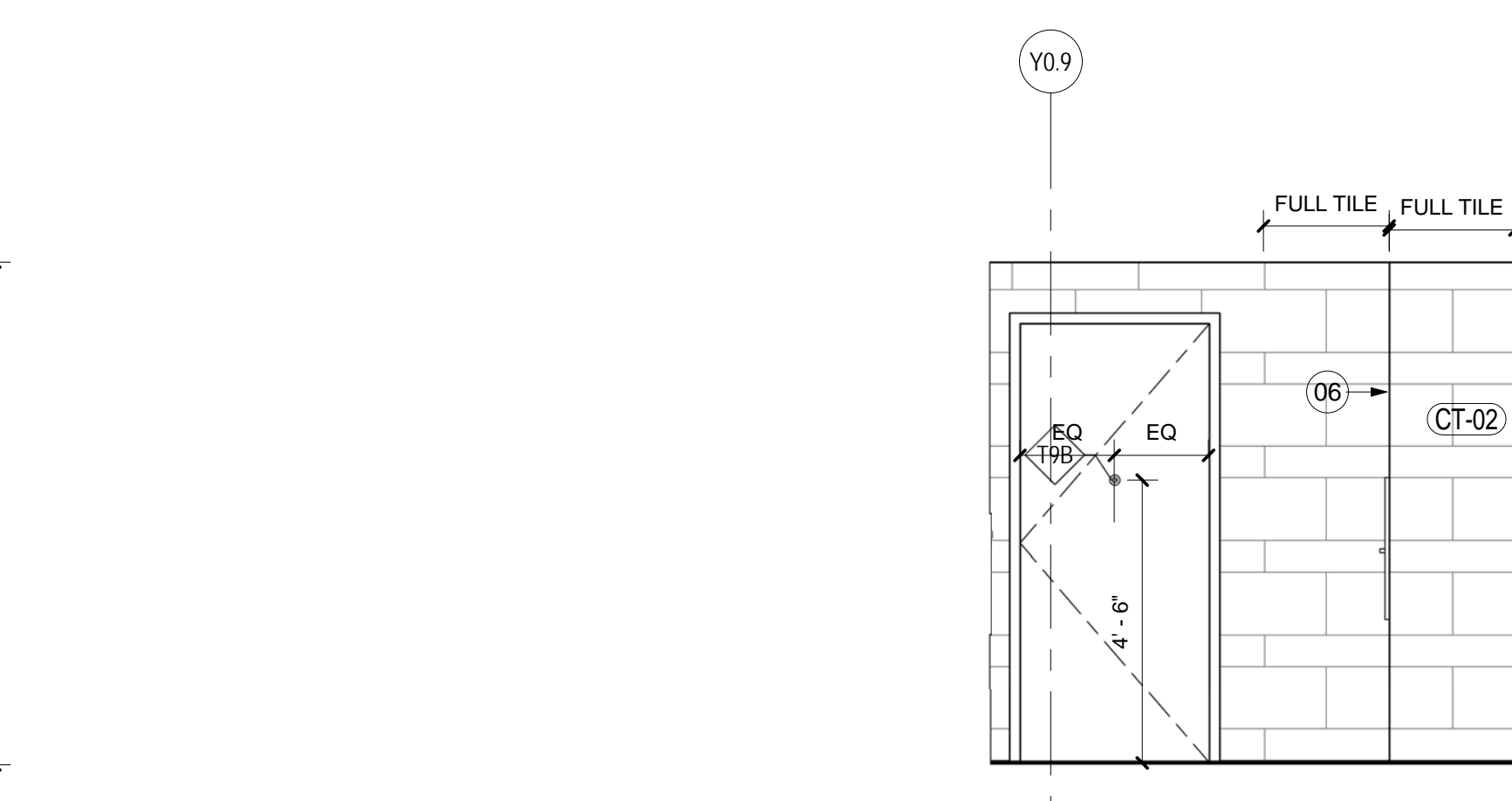
COMPANION 1515 - WEST
SCALE: 3/8" = 1'-0" A08.00



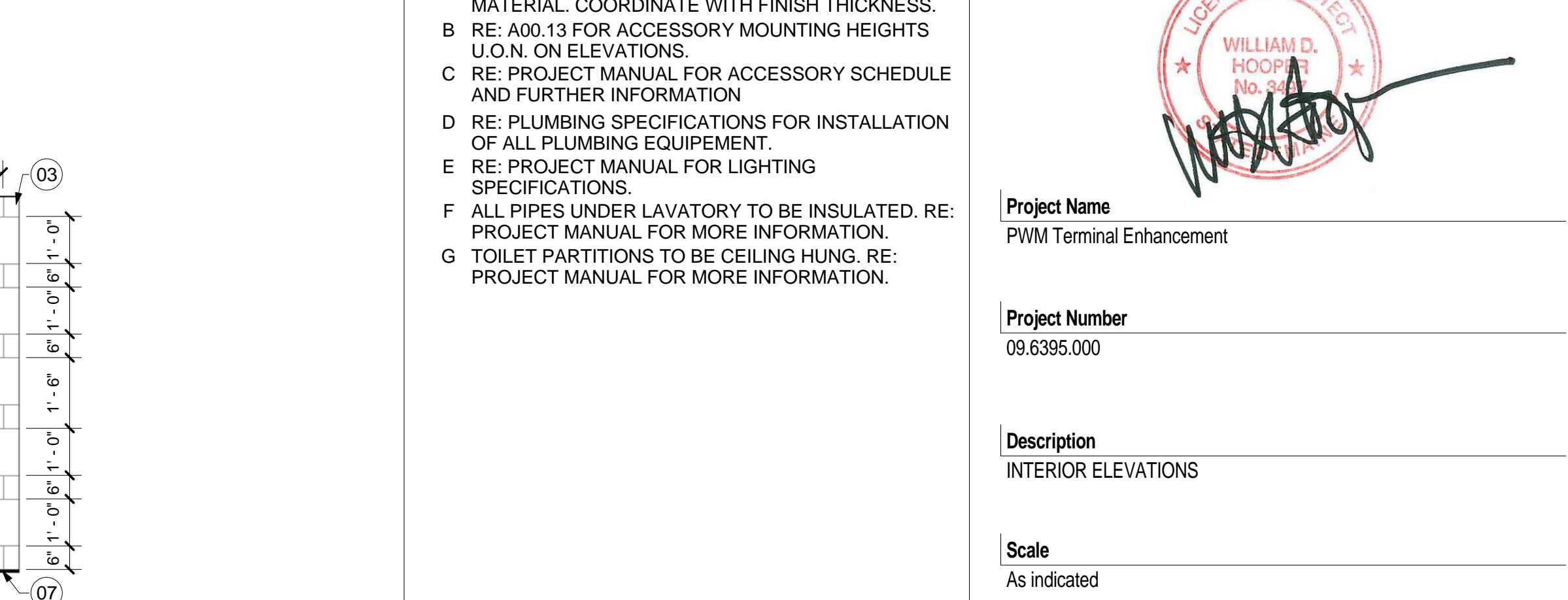
5D COMPANION 1515 - SOUTH
SCALE: 3/8" = 1'-0" A08.00



5C COMPANION 1515 - EAST
SCALE: 3/8" = 1'-0" A08.00



5B COMPANION 1515 - NORTH
SCALE: 3/8" = 1'-0" A08.00



5A COMPANION 1515 - NORTH
SCALE: 3/8" = 1'-0" A08.00

GENERAL NOTES

- ALL DIMENSIONS ARE TO FINISHED FACE OF MATERIAL. COORDINATE WITH FINISH THICKNESS.
- RE: A00.13 FOR ACCESSORY MOUNTING HEIGHTS U.O.M. ON ELEVATIONS.
- RE: PROJECT MANUAL FOR ACCESSORY SCHEDULE AND FURTHER INFORMATION.
- RE: PLUMBING SPECIFICATIONS FOR INSTALLATION OF ALL PLUMBING EQUIPMENT.
- RE: PROJECT MANUAL FOR LIGHTING SPECIFICATIONS.
- ALL PIPES UNDER LAVATORY TO BE INSULATED. RE: PROJECT MANUAL FOR MORE INFORMATION.
- TOILET PARTITIONS TO BE CEILING HUNG. RE: PROJECT MANUAL FOR MORE INFORMATION.

Seal/Signature

Project Name
PJM Terminal Enhancement

Project Number
09.6395.000

Description
INTERIOR ELEVATIONS

Scale
As indicated

A11.30

© 2009 Gensler