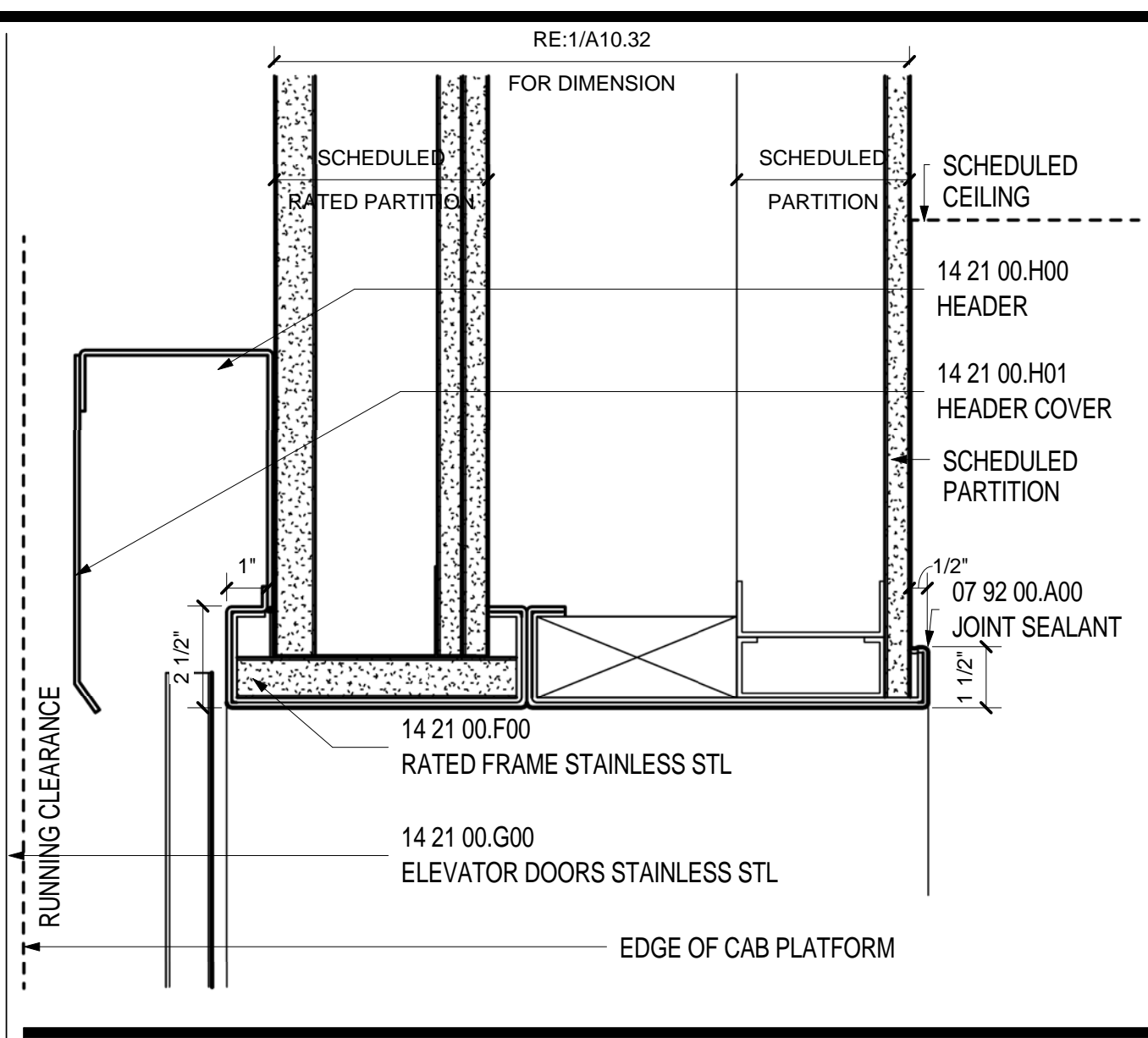
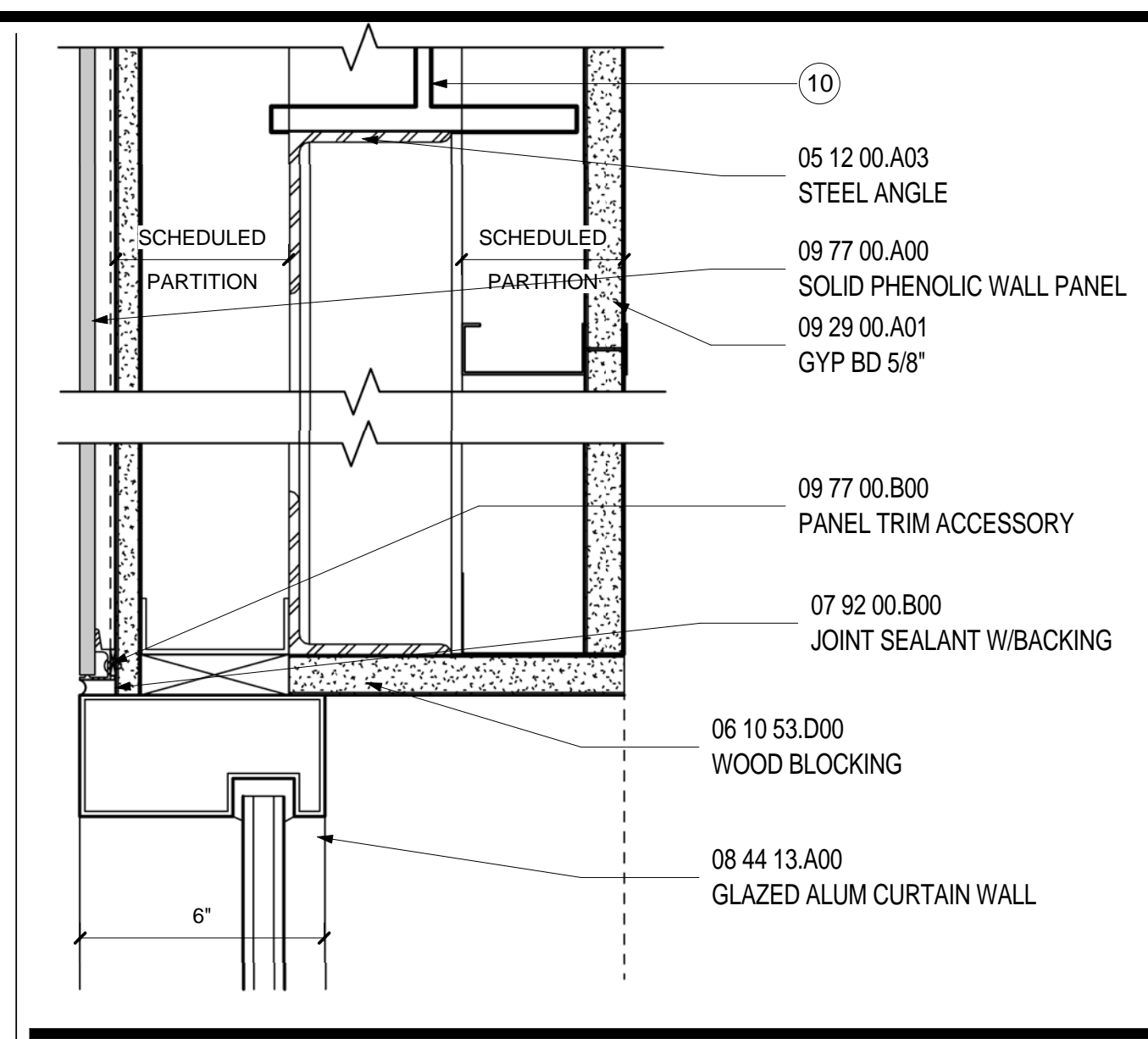


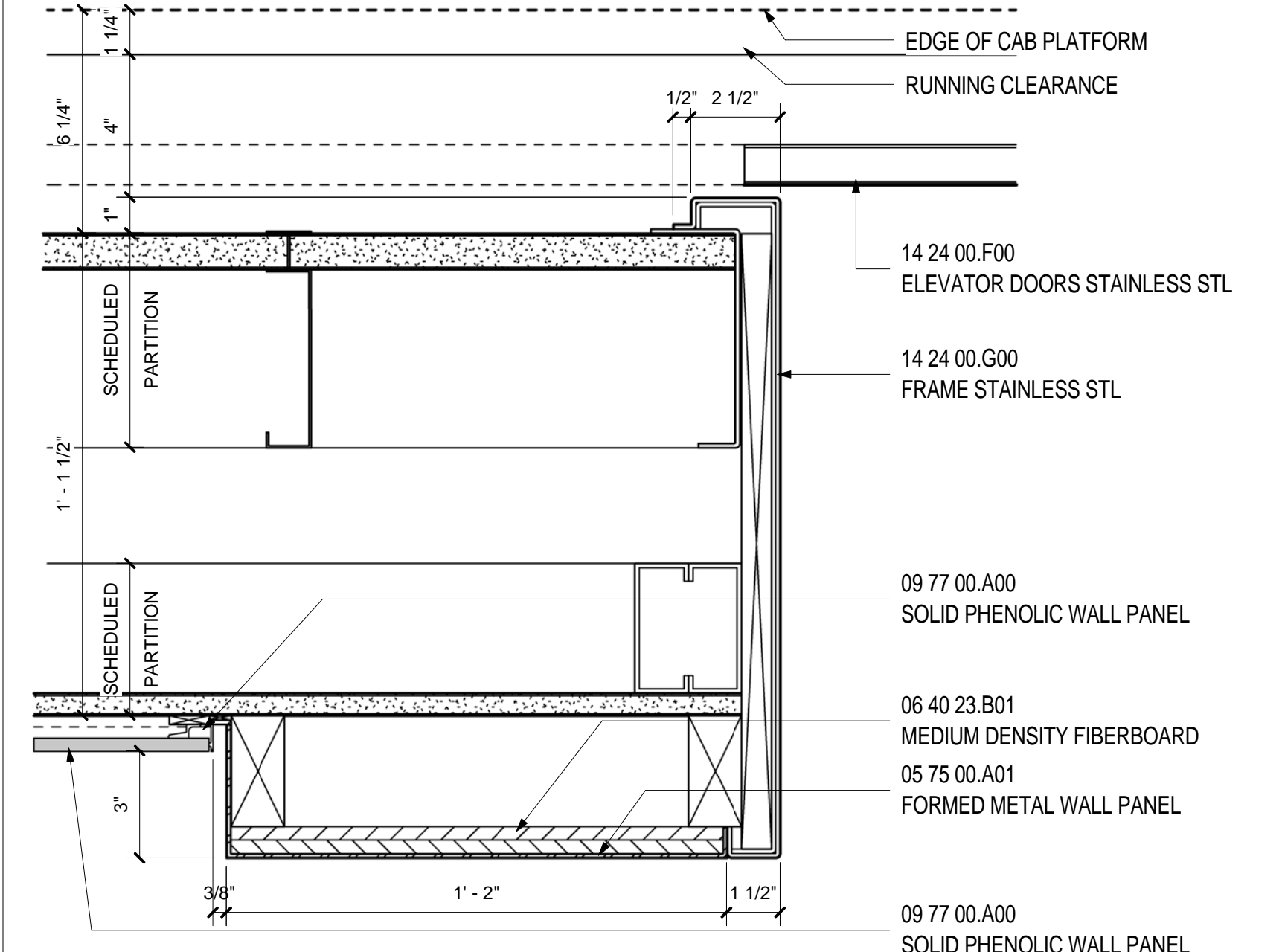
HEAD DETAIL TYP @ ELEV 4, 5, 6 & 7  
SCALE: 3" = 1'-0" A10.30 19



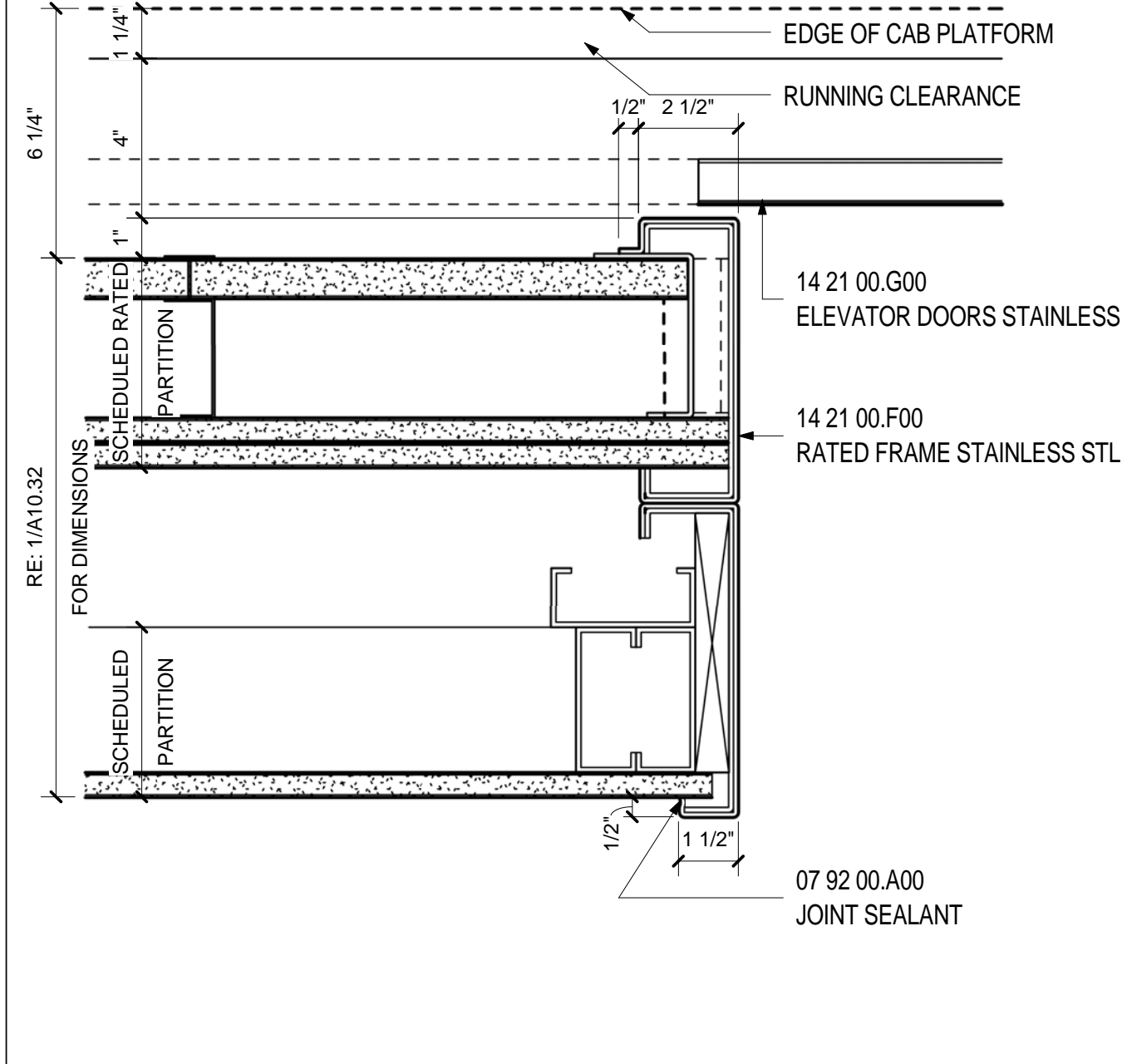
HEAD DETAIL TYP @ ELEV 8  
SCALE: 3" = 1'-0" A10.32 14



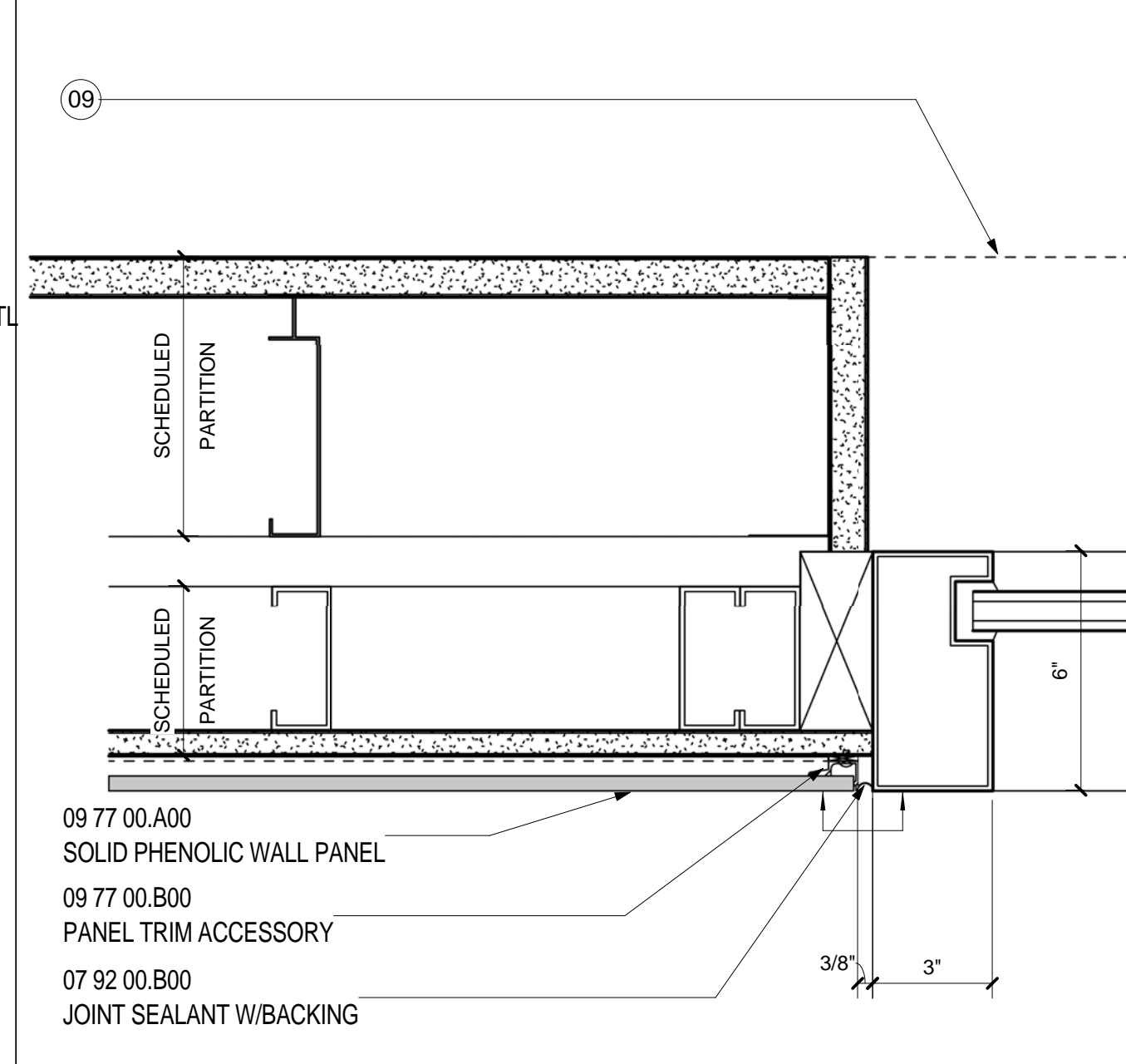
MULLION HEAD @ ELEV 4, 5, 6 & 7  
SCALE: 3" = 1'-0" A11.03 9



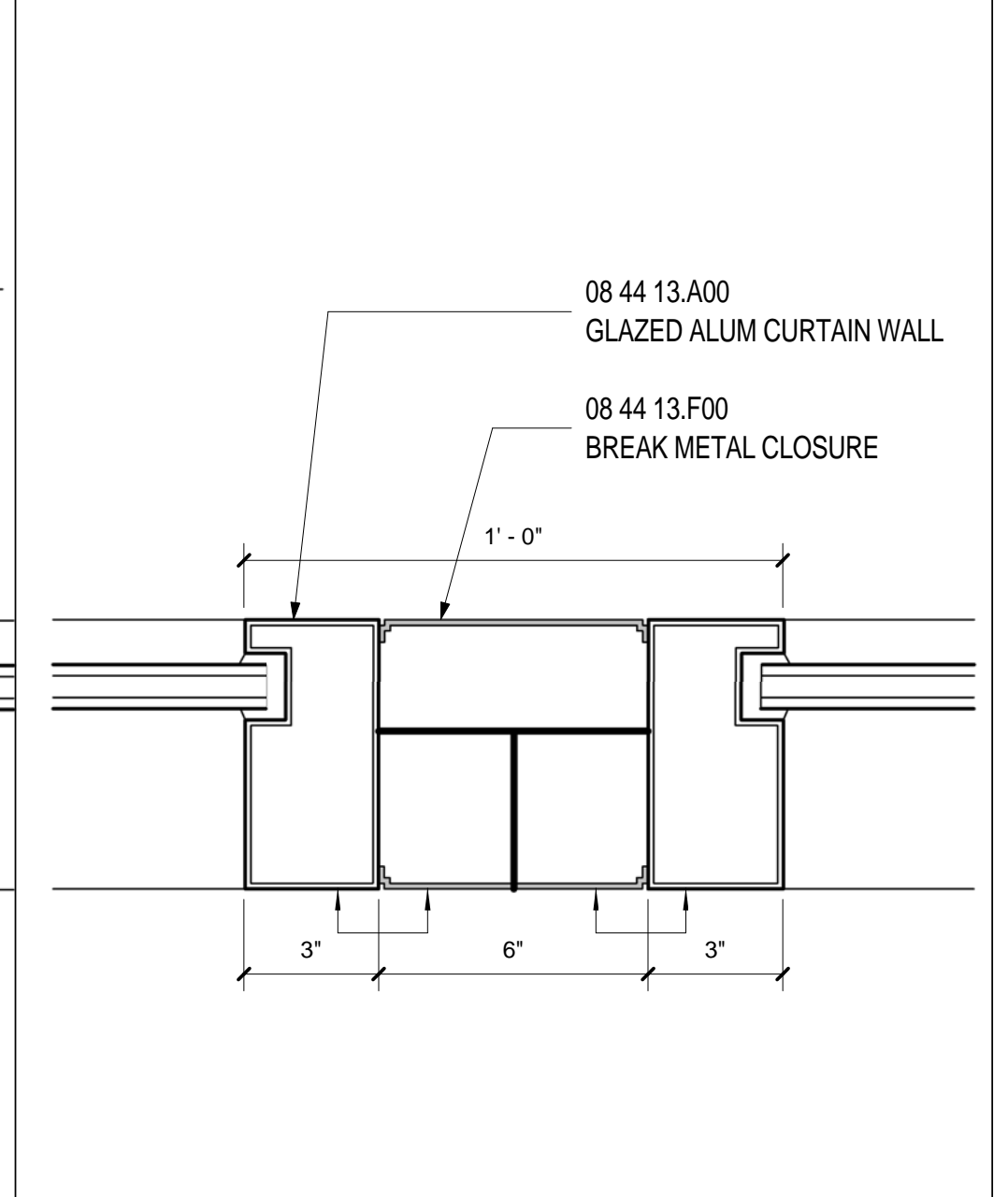
JAMB DETAIL TYP @ ELEV 4, 5, 6 & 7  
SCALE: 3" = 1'-0" A10.30 20



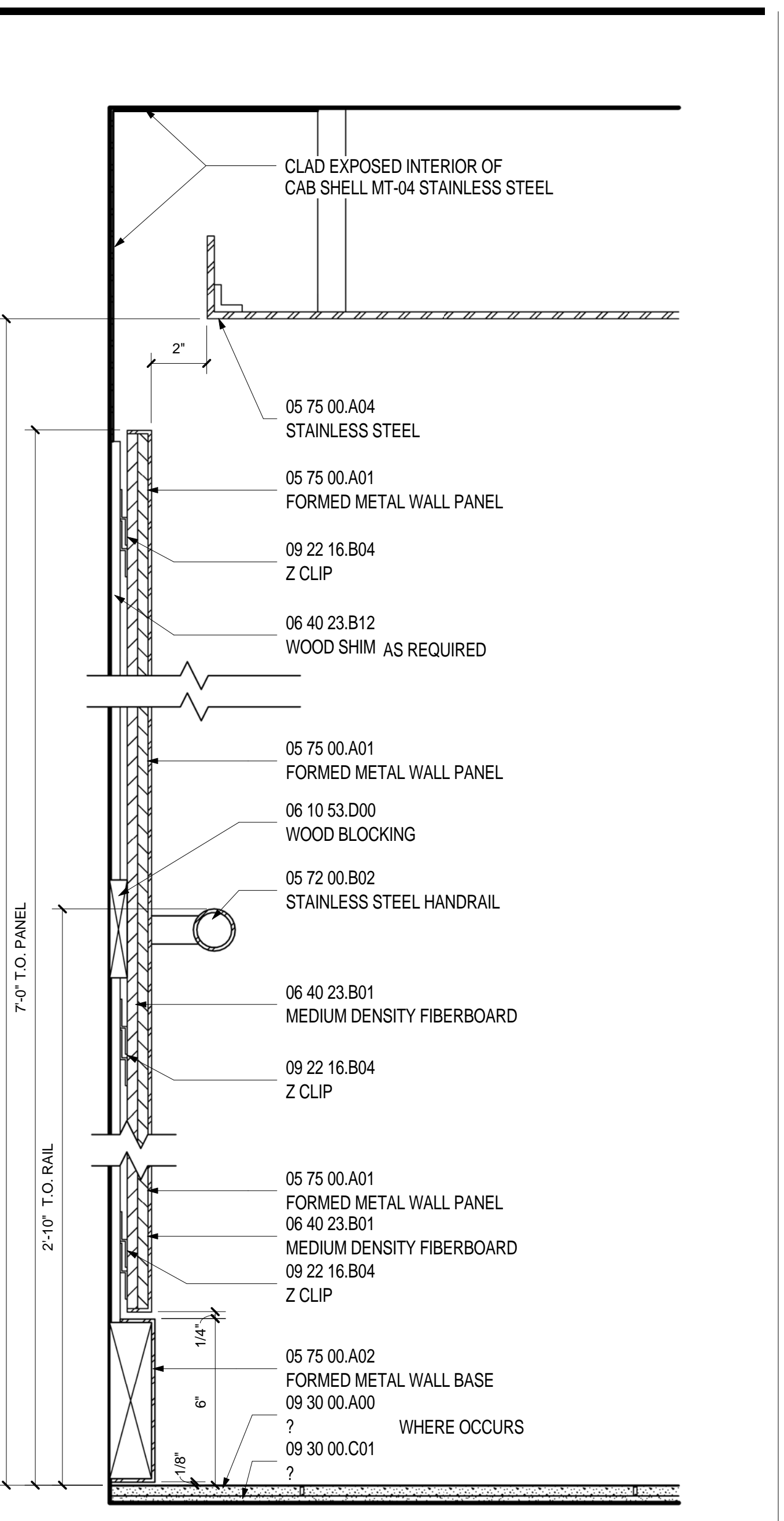
JAMB DETAIL TYP @ ELEV 8  
SCALE: 3" = 1'-0" A10.32 15



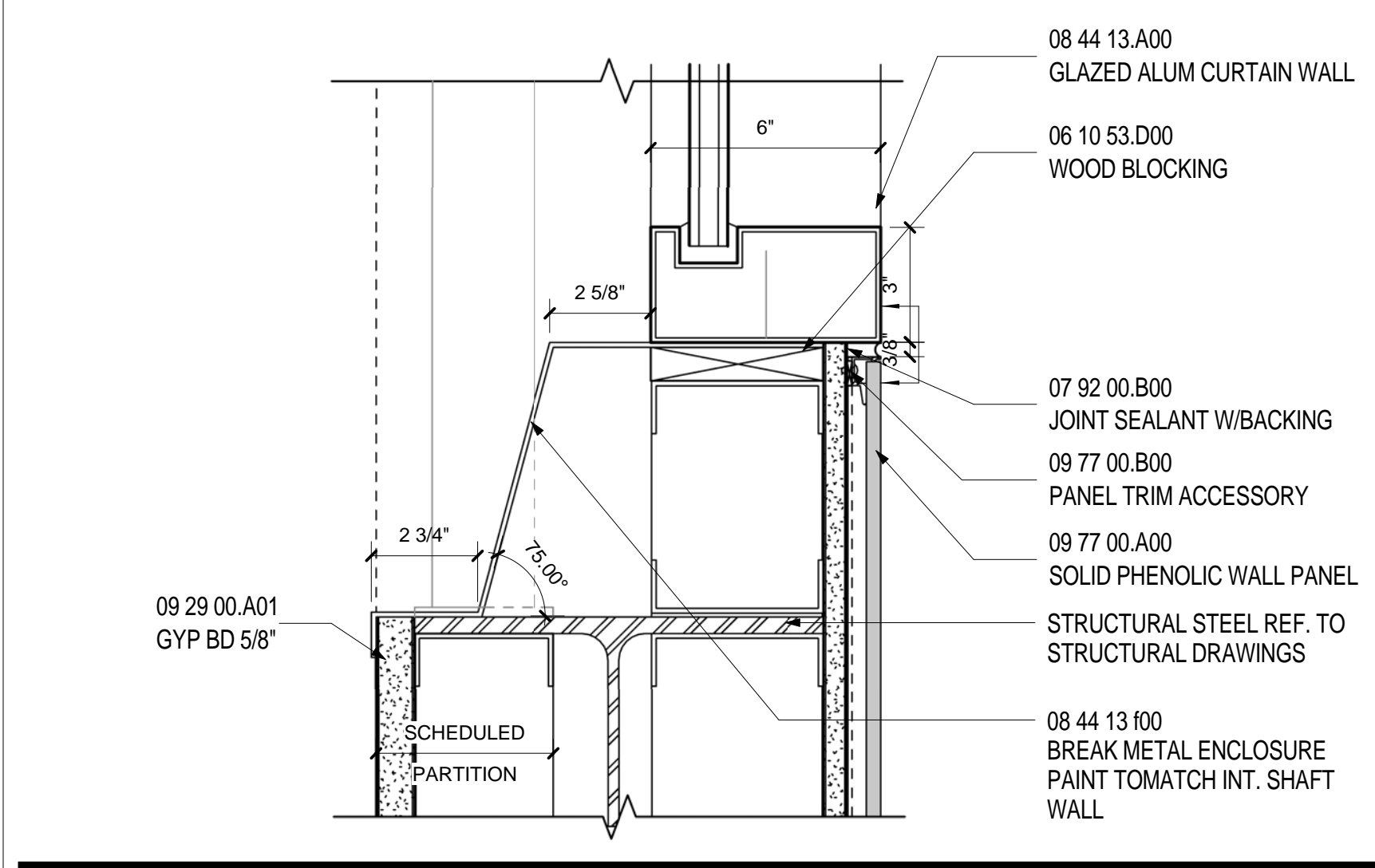
MULLION JAMB @ ELEV 4, 5, 6 & 7  
SCALE: 3" = 1'-0" A11.03 10



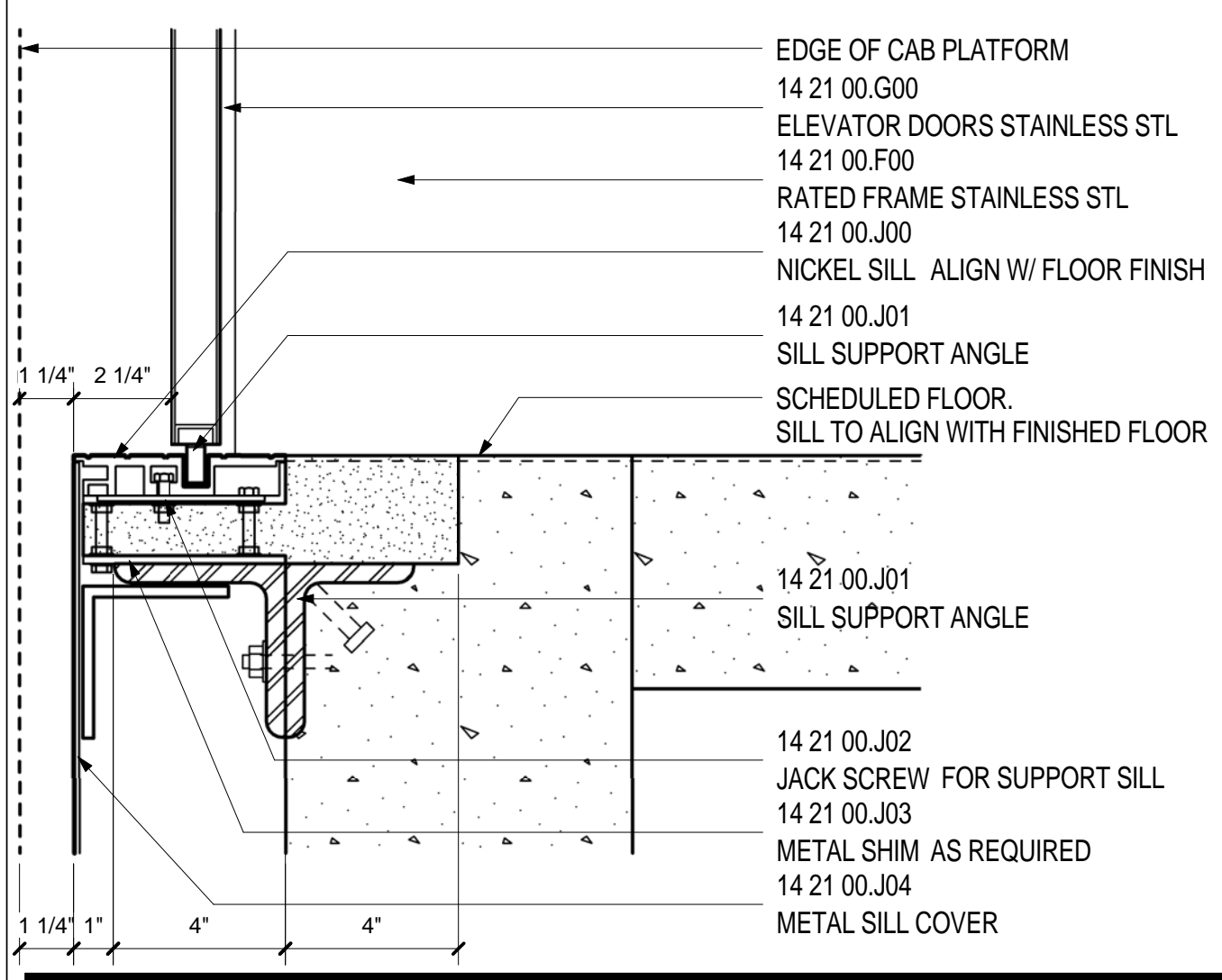
INTERMEDIATE MULLION  
SCALE: 3" = 1'-0" A11.03 5



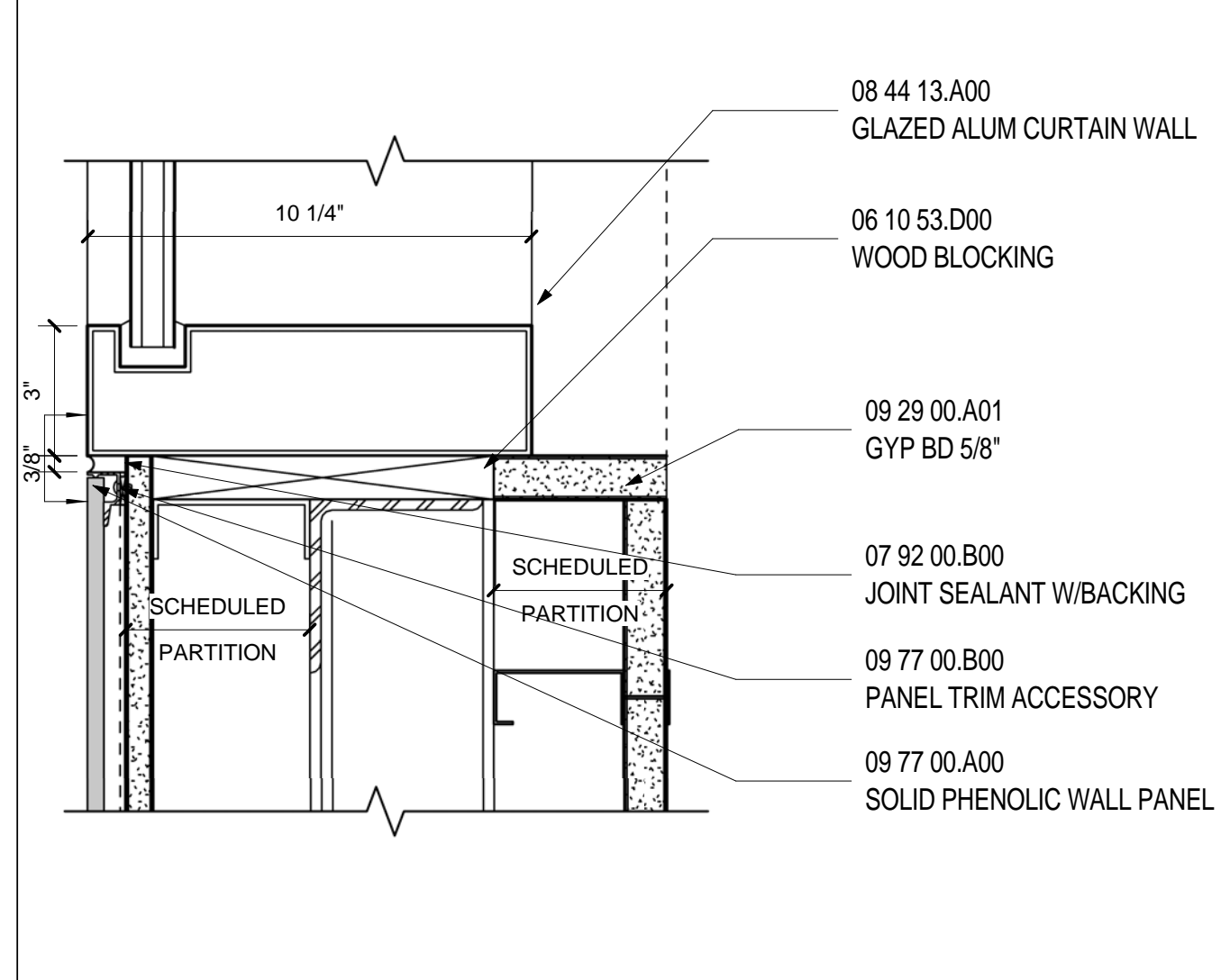
SECTION @ METAL WALL AT ELEVATORS 1  
SCALE: 3" = 1'-0" A10.30 1



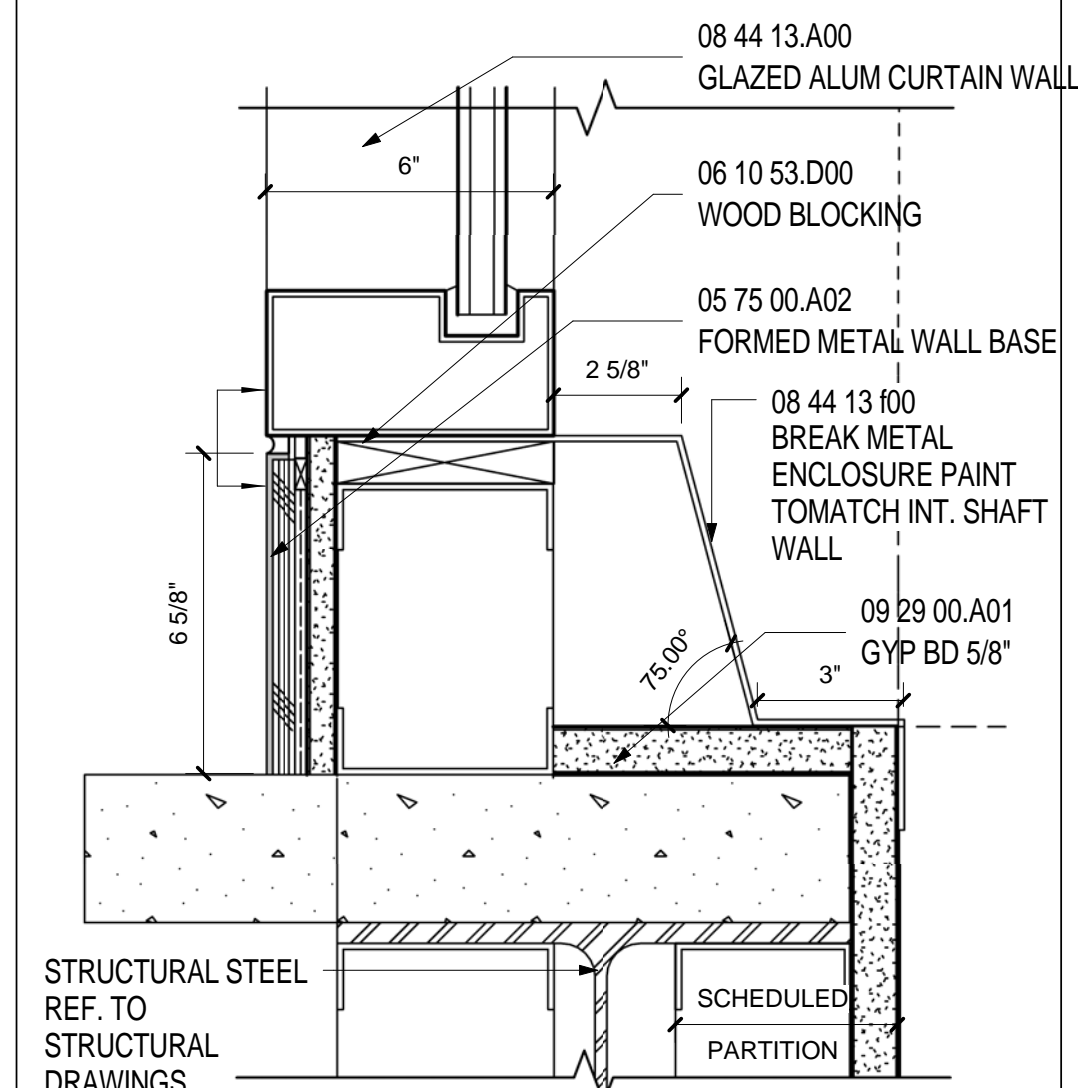
TRESPA SILL @ ELEV 4, 5, 6 & 7  
SCALE: 3" = 1'-0" A11.03 21



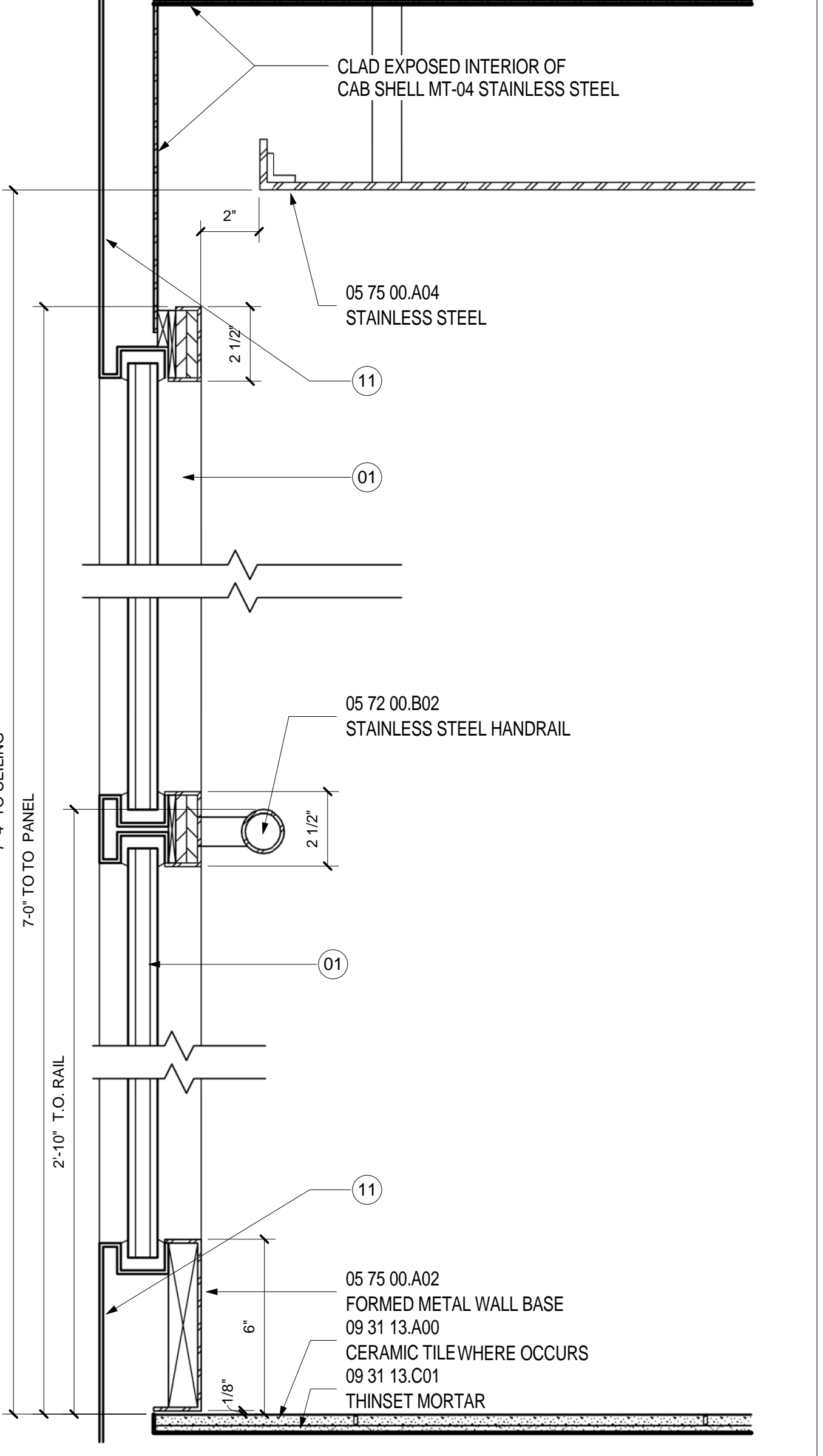
SILL DETAIL TYPICAL  
SCALE: 3" = 1'-0" A10.30 16



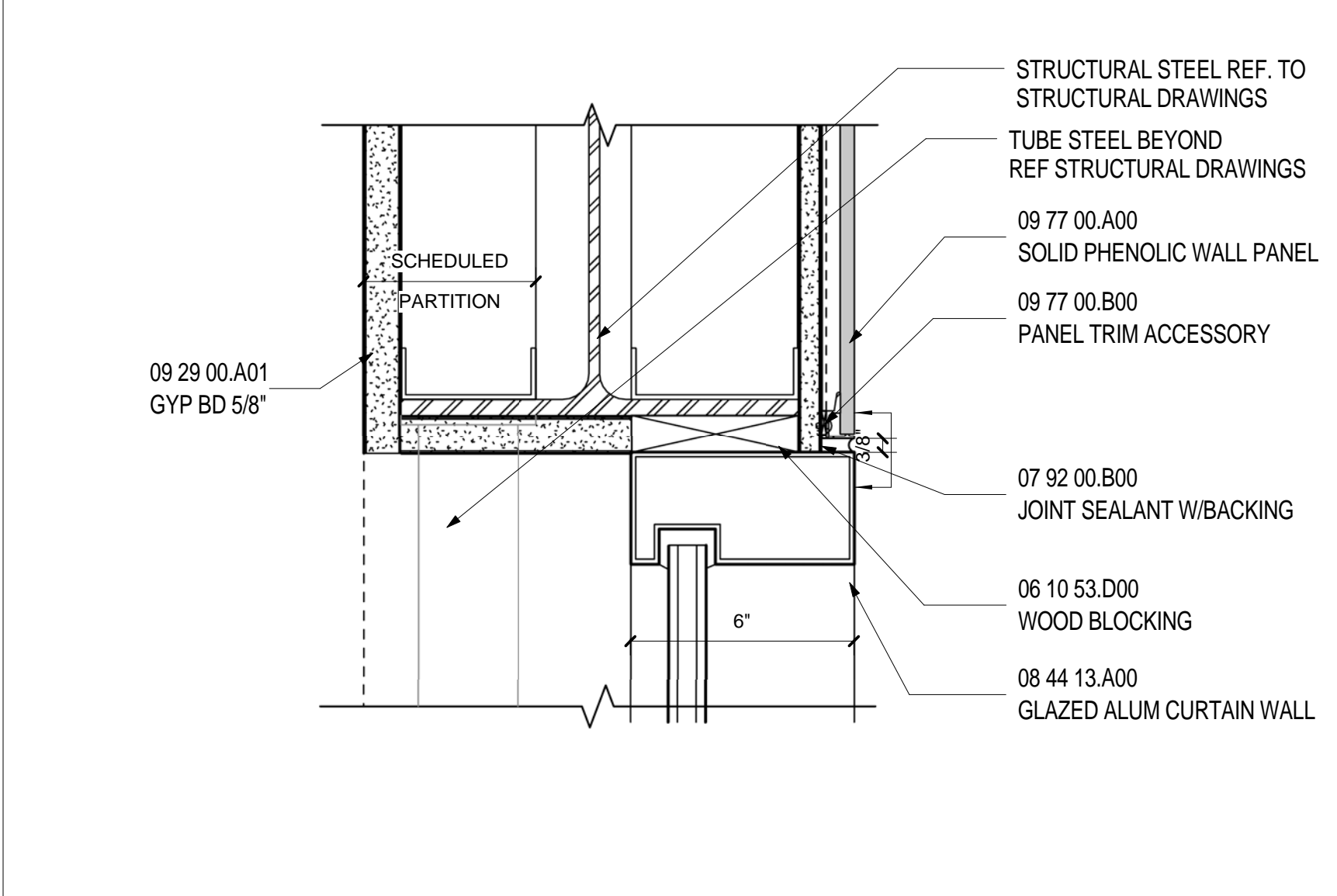
TRESPA SILL @ ELEV 4, 5, 6 & 7  
SCALE: 3" = 1'-0" A11.03 11



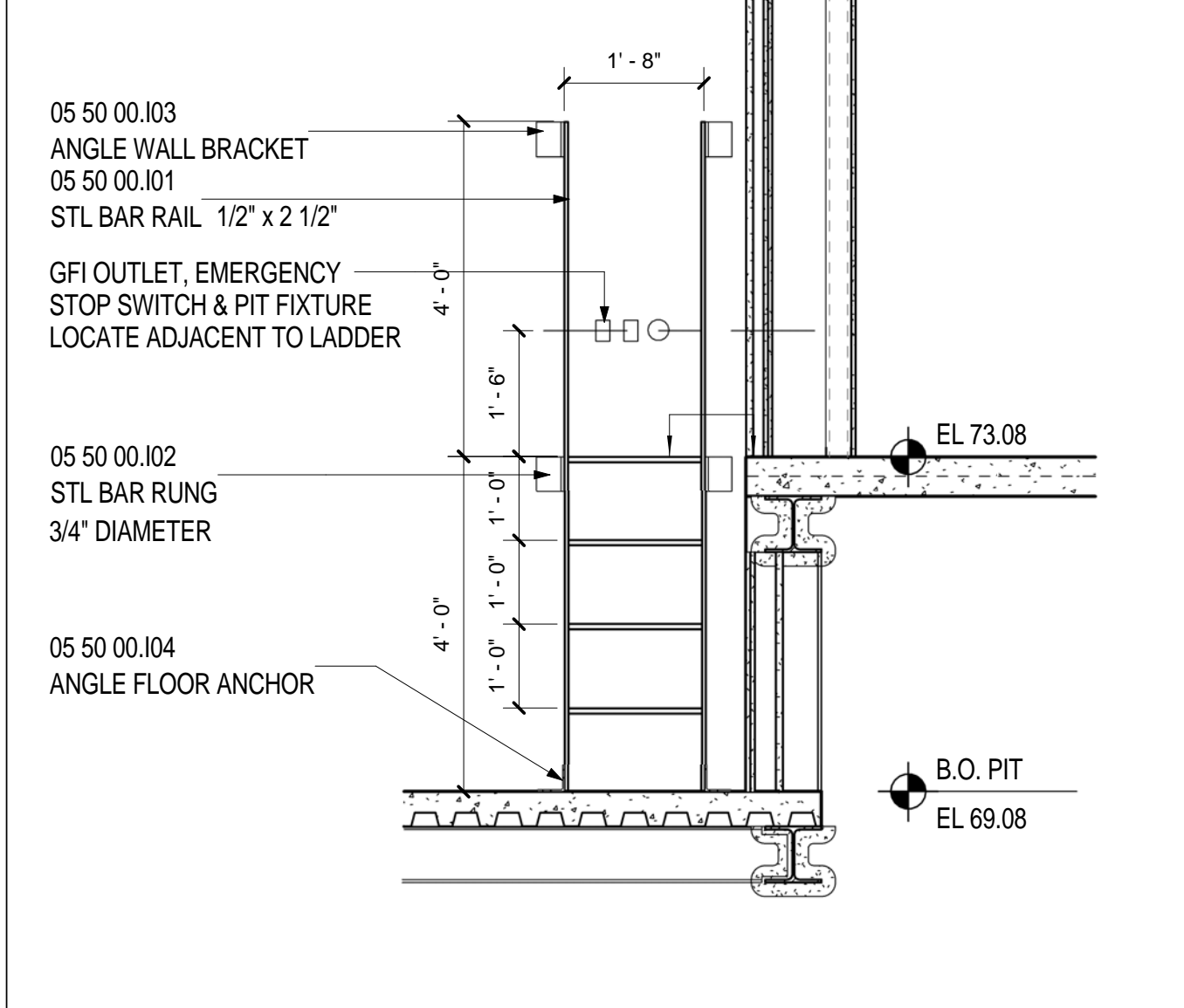
METAL SILL @ ELEV 4, 5, 6 & 7  
SCALE: 3" = 1'-0" A11.03 6



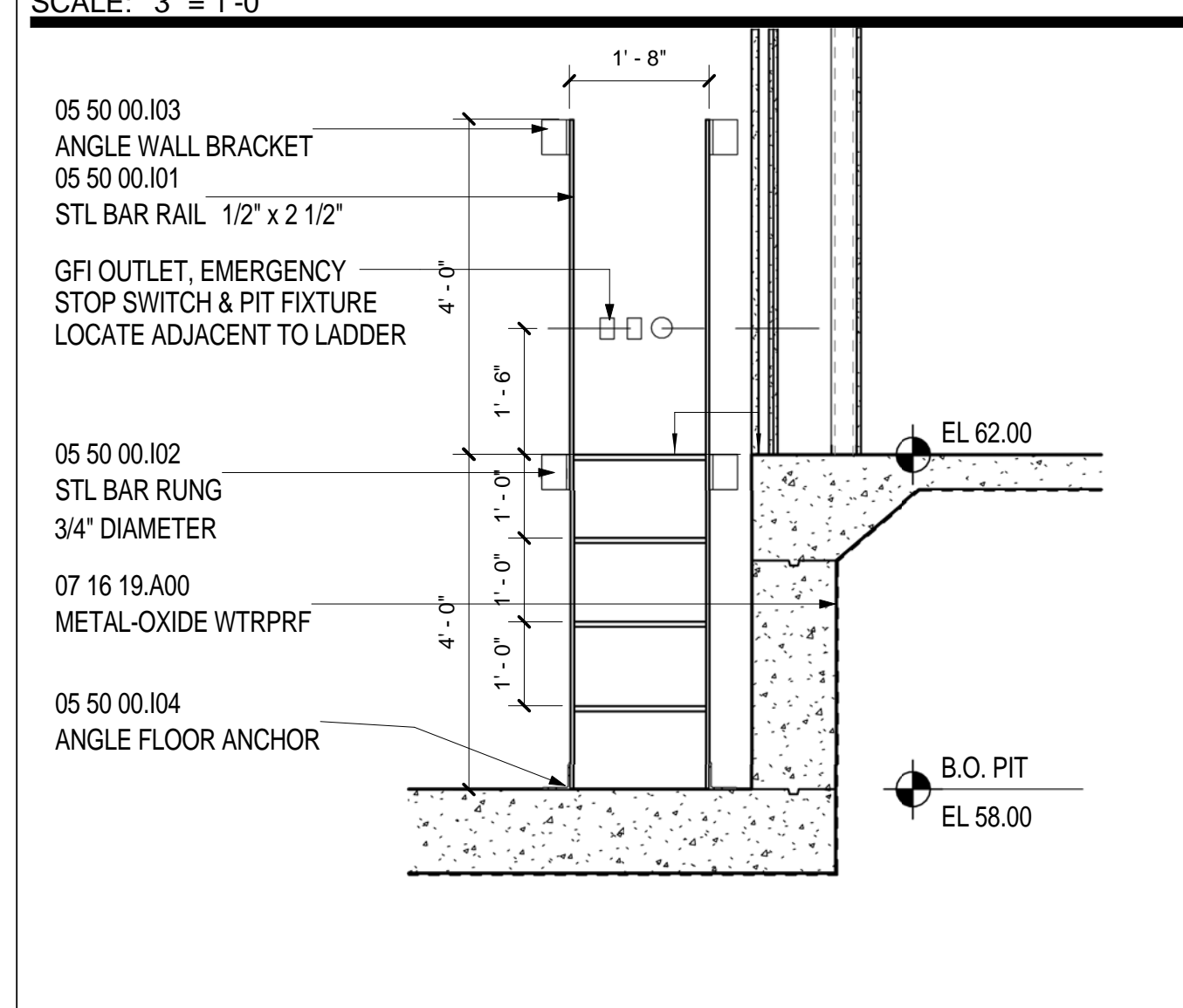
SECTION @ GLASS WALL AT ELEVATORS 2  
SCALE: 3" = 1'-0" A10.30 2



TRESPA HEAD @ ELEV 4, 5, 6 & 7  
SCALE: 3" = 1'-0" A11.03 22



PIT LADDER - ELEV 6 & 7  
SCALE: 1/2\"/>



PIT LADDER - ELEV 4, 5 & 8  
SCALE: 1/2\"/>

**SHEET NOTES**

- 01 SIDE WALLS OF ELEVATOR CAB IS CLEAR GLASS. COORDINATE WITH ELEVATOR MANUFACTURER.
- 02 EMERGENCY ACCESS PANEL
- 03 CCTV SECURITY CAMERA
- 04 1 1/2" DIAMETER STAINLESS STEEL HANDRAIL
- 05 PIT LADDER
- 06 ALL EXPOSED STEEL AND WALLS WITH IN SHAFT TO BE PAINTED. RE: FINISH PLAN FOR FINISH
- 07 HOISTWAY LIGHT FIXTURE WITH WIRE GUARD, MOUNTED PER ELEVATOR MANUFACTURERS REQUIREMENTS.
- 08 PROVIDED METAL OXIDE WATER PROOFING AND WATER STOPS IN AND AROUND PIT. RE: SECTION 07 16 19 IN THE PROJECT MANUAL FOR MORE INFORMATION.
- 09 LINE OF SILL BELOW
- 10 STRUCTURAL STEEL. RE: STRUCTURAL DRAWINGS FOR ADDITIONAL INFORMATION
- 11 PROVIDE STAINLESS STEEL FASCIA TO COVER CAB EXTERIOR ON GLASS SIDE ONLY

Portland International  
Jetport  
1001 Westbrook Street  
Portland, Maine 04102

**Gensler**  
2020 K Street, Northwest  
Suite 200  
Washington DC 20006  
Telephone 202.721.5200  
Facsimile 202.872.8587

| Date         | Description                |
|--------------|----------------------------|
| 01/23/09     | 95% CONSTRUCTION DOCUMENTS |
| 10/26/09     | ISSUED FOR PERMIT          |
| 145 09/01/11 | ISSUED FOR CONSTRUCTION    |

**GENERAL NOTES**

- A ALL PIT DIMENSIONS AND CAB SIZES TO BE COORDINATED WITH SELECTED MANUFACTURER UPON PROCUREMENT
- B MANUFACTURER TO PROVIDE ALL ELEMENTS TO COMPLY WITH ALL GOVERNING CODES.
- C GLASS SIDE WALL ELEVATORS TO BE PER ELEVATOR MANUFACTURERS DRAWINGS. ELEVATORS AND DETAILS ARE FOR DESIGN INTENT ONLY.

Seal/Signature  
  
Project Name  
PJM Terminal Enhancement

Project Number  
09.6395.000

Description  
VERTICAL CIRCULATION - ELEVATOR DETAILS

Scale  
As indicated

**A10.34**

© 2009 Gensler