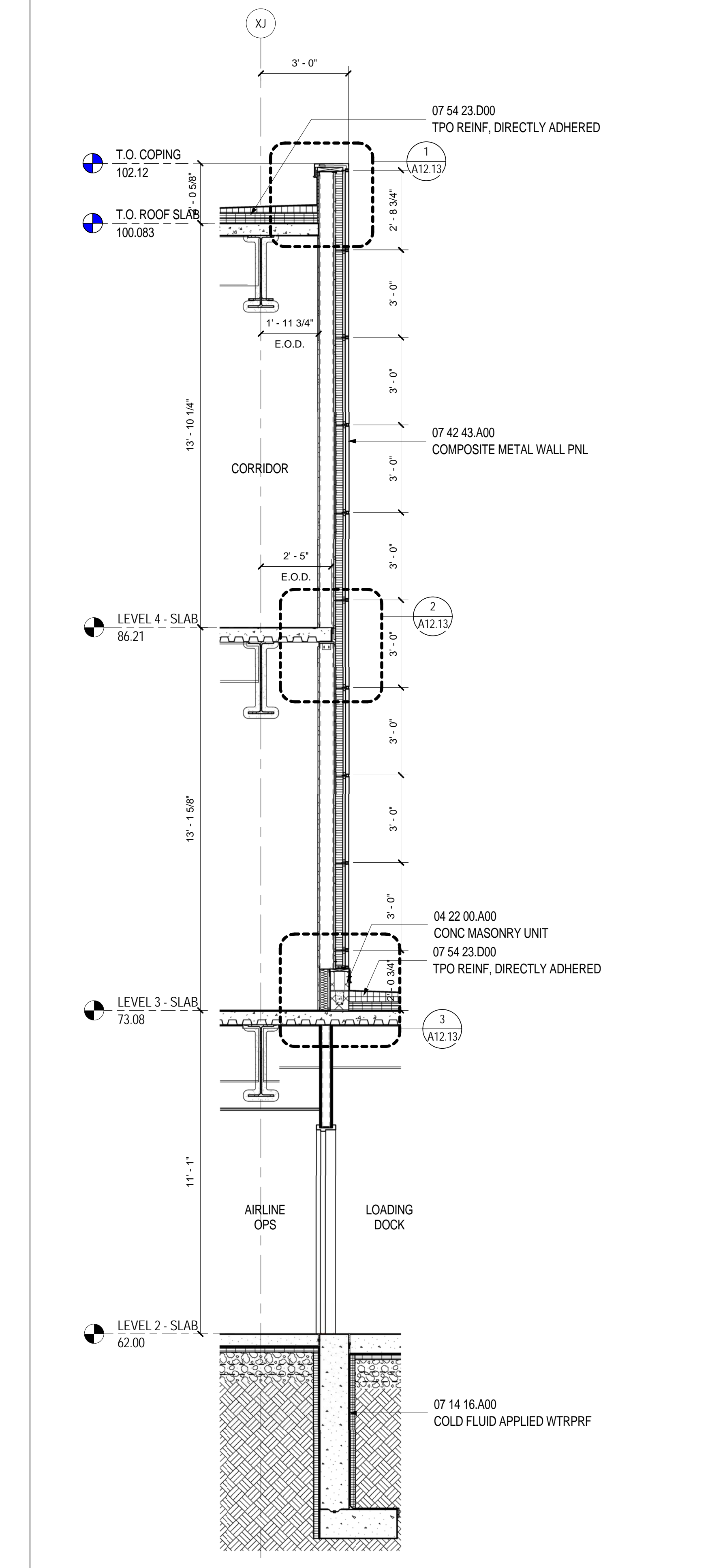


WALL TYPE C - SECTION B

SCALE: 3/8" = 1'-0"

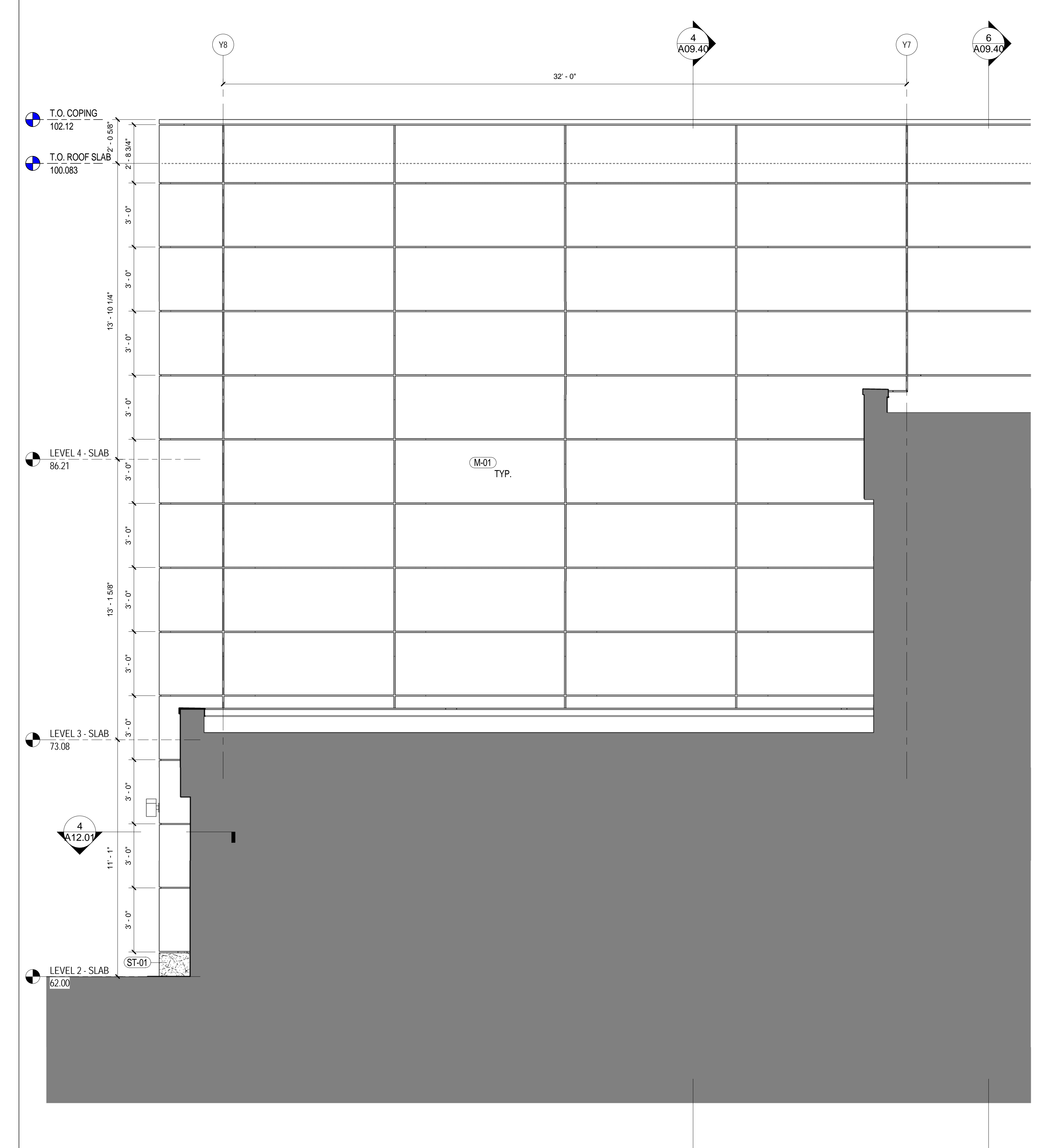
A09.40



WALL TYPE C - SECTION A

SCALE: 3/8" = 1'-0"

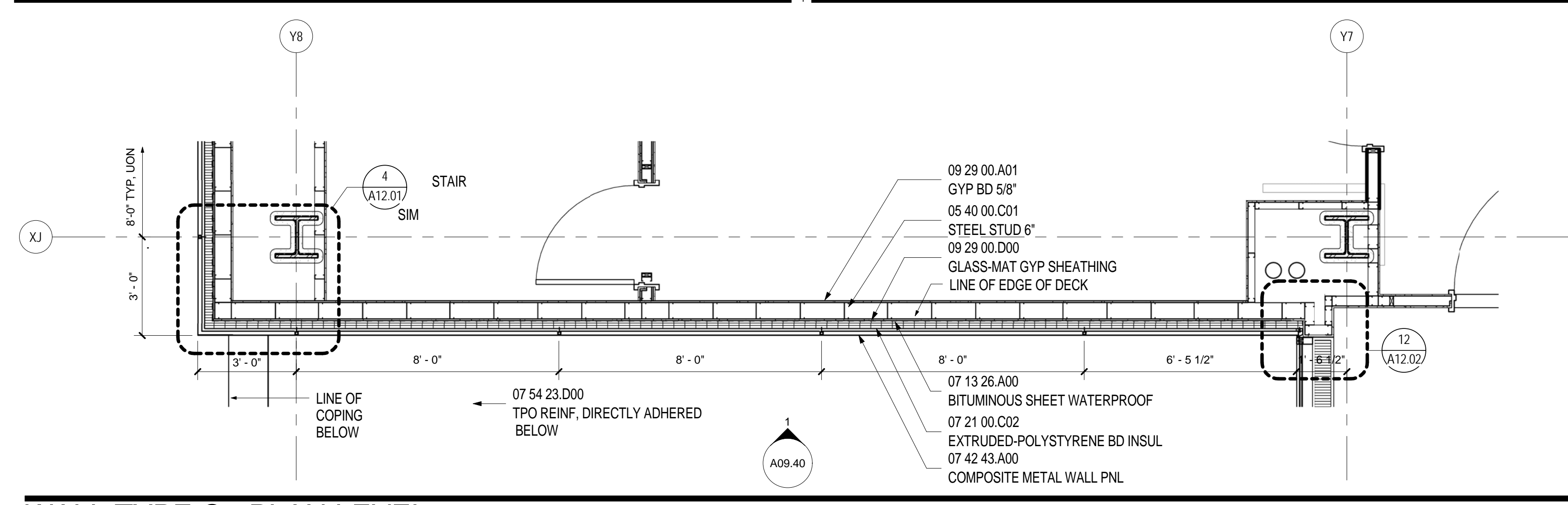
A09.40



WALL TYPE C - ELEVATION

SCALE: 3/8" = 1'-0"

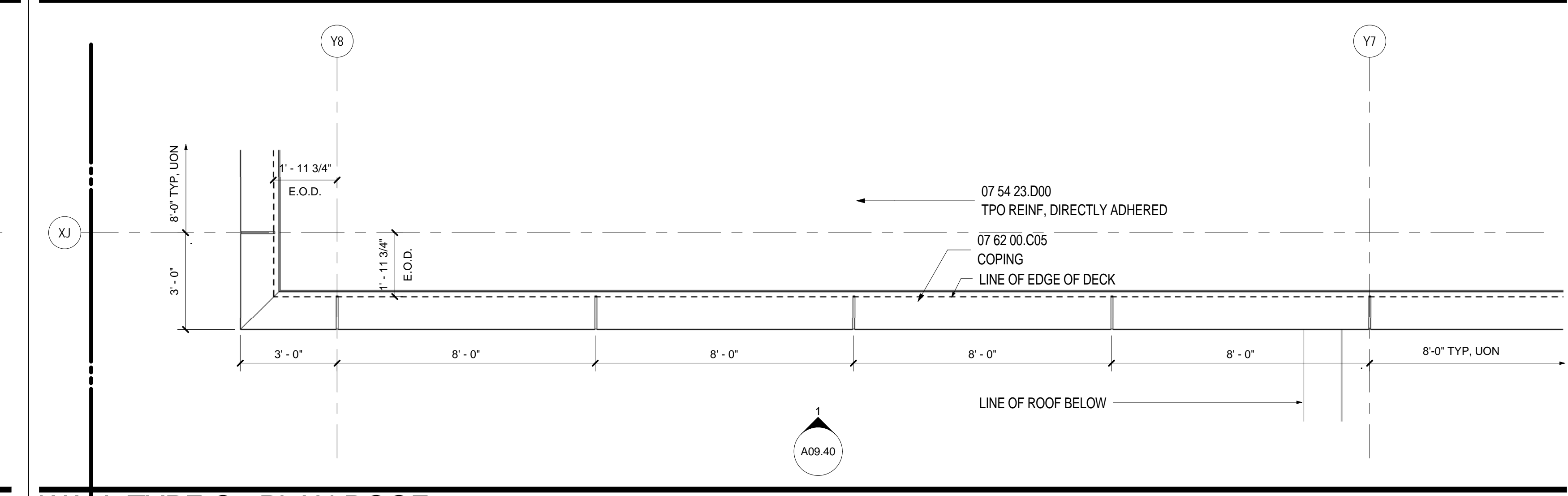
A09.01



WALL TYPE C - PLAN LEVEL 3

SCALE: 3/8" = 1'-0"

A02.03.05



WALL TYPE C - PLAN ROOF

SCALE: 3/8" = 1'-0"

A02.05.04



WALL TYPE C - PLAN LEVEL 4

SCALE: 3/8" = 1'-0"

A02.04.05

SHEET NOTES

- 01 EXPANSION JOINT, RE: A02 SERIES FOR TYPE
- 02 SCHEDULED LIGHT FIXTURE.
- 03 EXISTING PRECAST FACADE TO REMAIN.
- 04 EXISTING STOREFRONT TO REMAIN.
- 05 EXPOSED STEEL TO RECEIVE INTUMESCENT FIRE-RESISTANT COATING & FINISHES AS SCHEDULED

Portland International Jetport

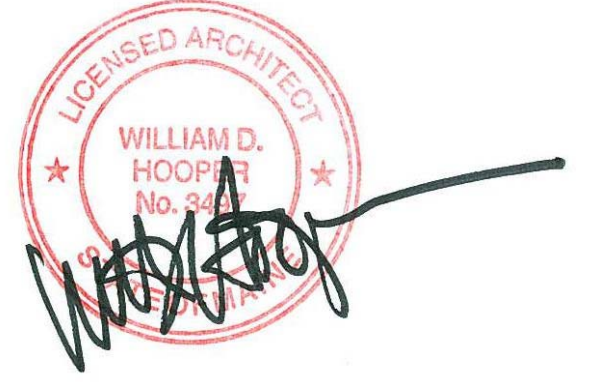
1001 Westbrook Street
Portland, Maine 04102

2020 K Street, Northwest
Suite 200
Washington DC 20006
Telephone 202.721.5200
Facsimile 202.872.8587

Gensler

Date	Description
07/11/08	SCHEMATIC DESIGN
09/22/08	DESIGN DEVELOPMENT
12/03/08	75% CONSTRUCTION DOCUMENTS
01/23/09	95% CONSTRUCTION DOCUMENTS
10/26/09	ISSUED FOR PERMIT
2 11/12/09	ADDENDUM #2
145 09/01/11	ISSUED FOR CONSTRUCTION

Seal/Signature



Project Name
PWM Terminal Enhancement

Project Number
09.6395.000

Description
WALL TYPE C

Scale
3/8" = 1'-0"

A09.40

© 2009 Gensler