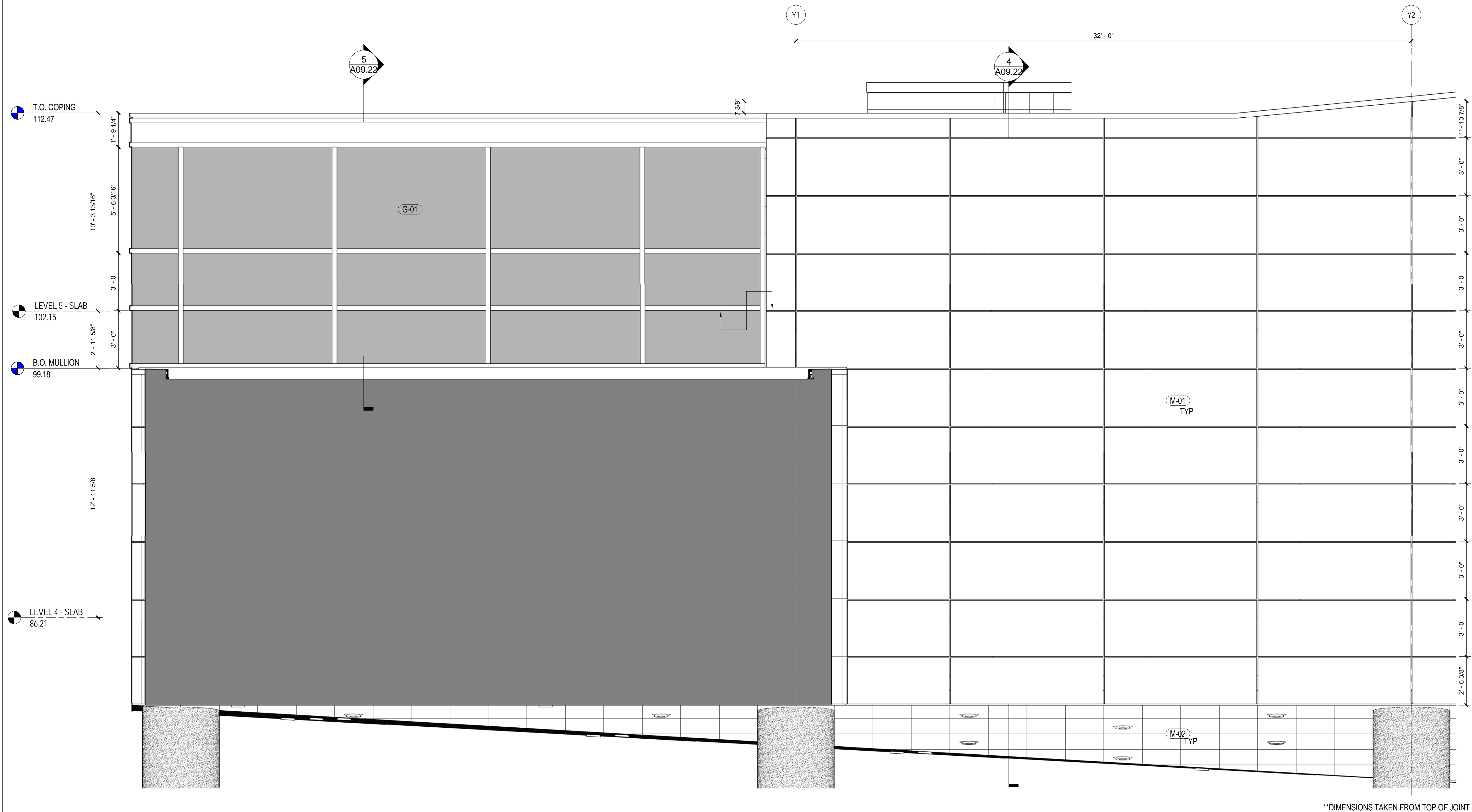


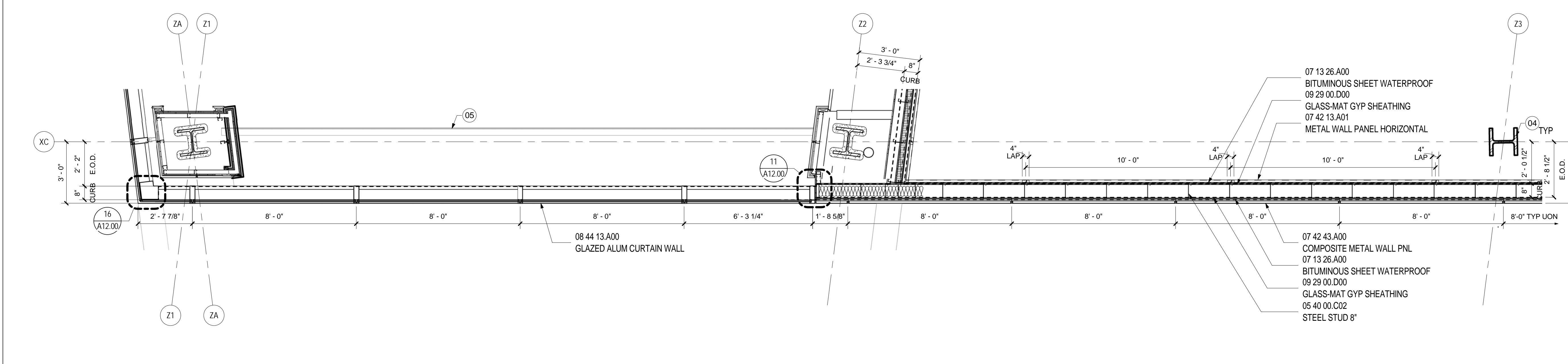
WALL TYPE A.2 - SECTION

SCALE: 3/8" = 1'-0" A09.22



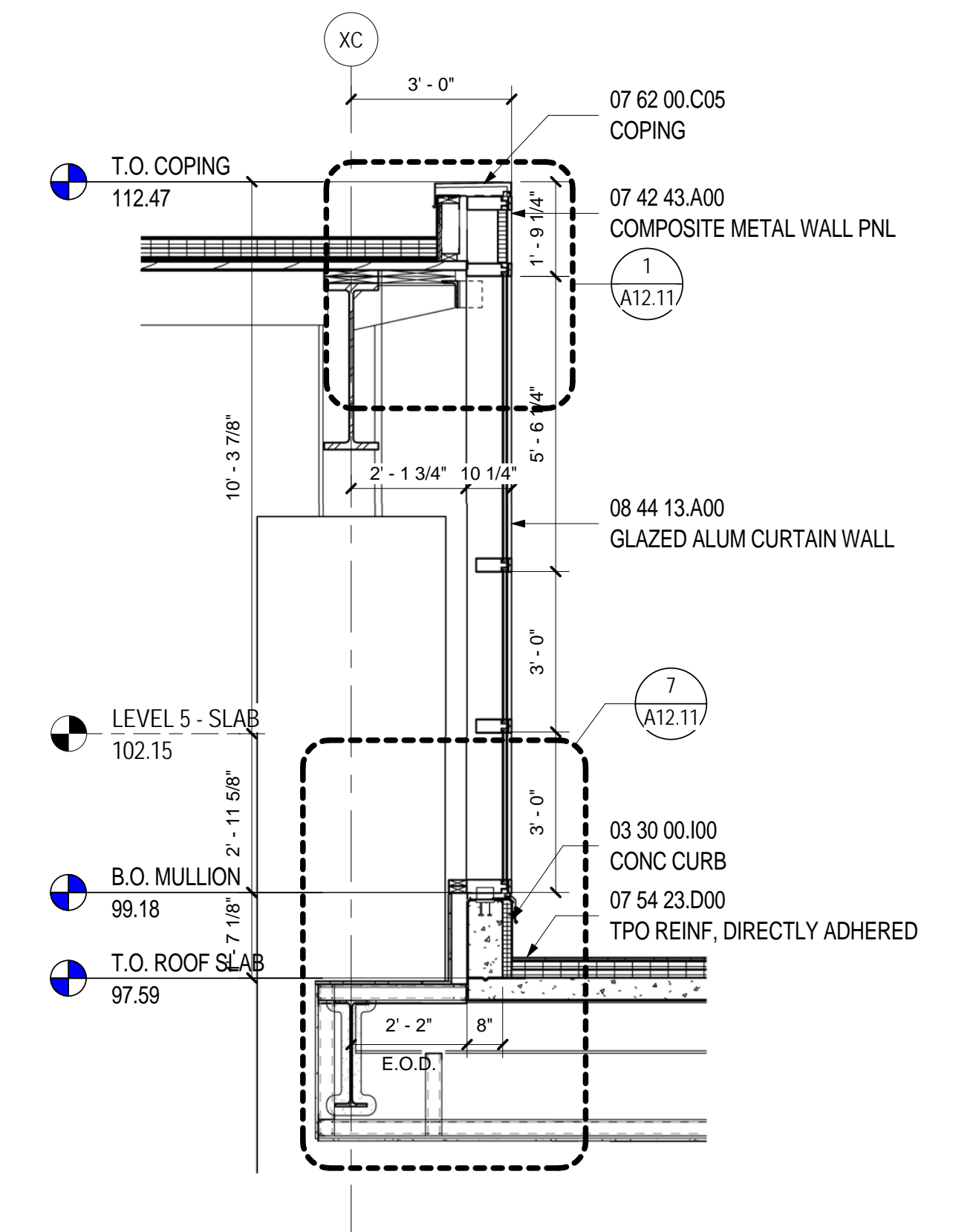
WALL TYPE A.2 - ELEVATION

SCALE: 3/8" = 1'-0" A09.03



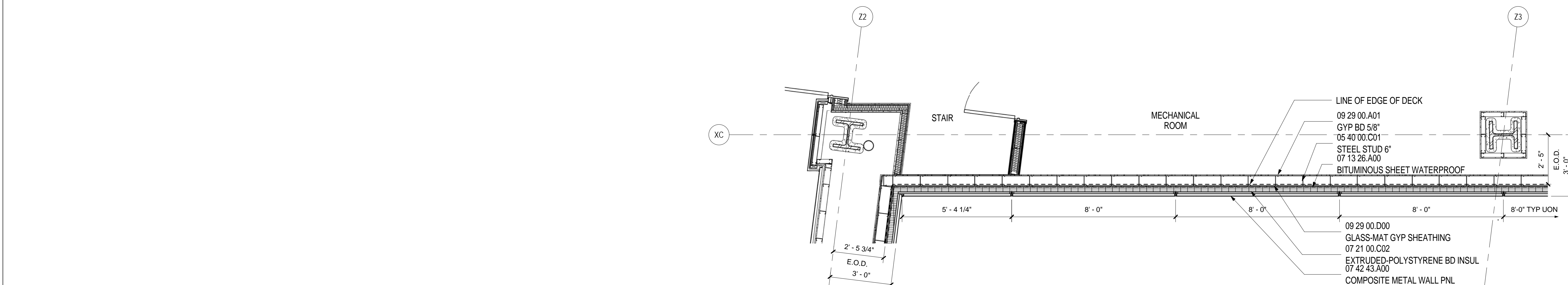
WALL TYPE A.2 - PLAN LEVEL 5

SCALE: 3/8" = 1'-0" A02.05.04



WALL TYPE B.7 - SECTION

SCALE: 3/8" = 1'-0" A09.22



WALL TYPE A.2 - PLAN LEVEL 4

SCALE: 3/8" = 1'-0" A02.04.04

SHEET NOTES

- 01 FACADE BRANDING GRAPHICS, BACK LIT EXTRUDED PIN MOUNTED LETTERING, RE: DETAIL 18/A12.10 FOR WALL PENETRATION, RE: A07 SERIES FOR MORE INFORMATION.
- 02 FACADE BRANDING GRAPHICS, INTERNALLY ILLUMINATED, RE: DETAIL 18/A12.10 FOR WALL PENETRATION, RE: A07 SERIES FOR MORE INFORMATION.
- 03 AREA OF REMOVABLE METAL PANELS FOR ACCESS TO CHILLERS.
- 04 EXPOSED STEEL TO BE GALVANIZED
- 05 LINE OF GYPSUM BOARD LEDGE BELOW

Portland International Jetport

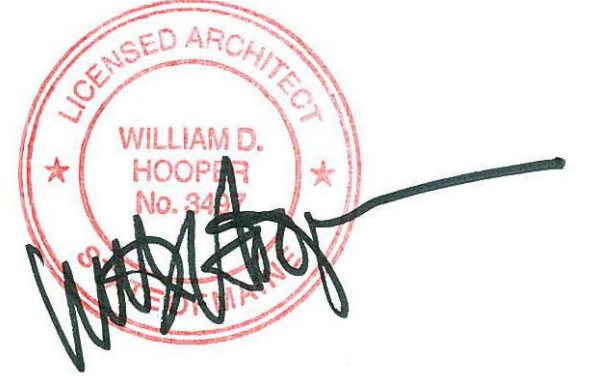
1001 Westbrook Street
Portland, Maine 04102

Gensler

2020 K Street, Northwest
Suite 200
Washington DC 20006
Telephone 202.721.5200
Facsimile 202.872.8587

Date	Description
12/03/08	75% CONSTRUCTION DOCUMENTS
01/23/09	95% CONSTRUCTION DOCUMENTS
10/26/09	ISSUED FOR PERMIT
145 09/01/11	ISSUED FOR CONSTRUCTION

Seal/Signature



Project Name
PJM Terminal Enhancement

Project Number
09.6395.000

Description
WALL TYPE A.2

Scale
3/8" = 1'-0"

A09.22

© 2009 Gensler