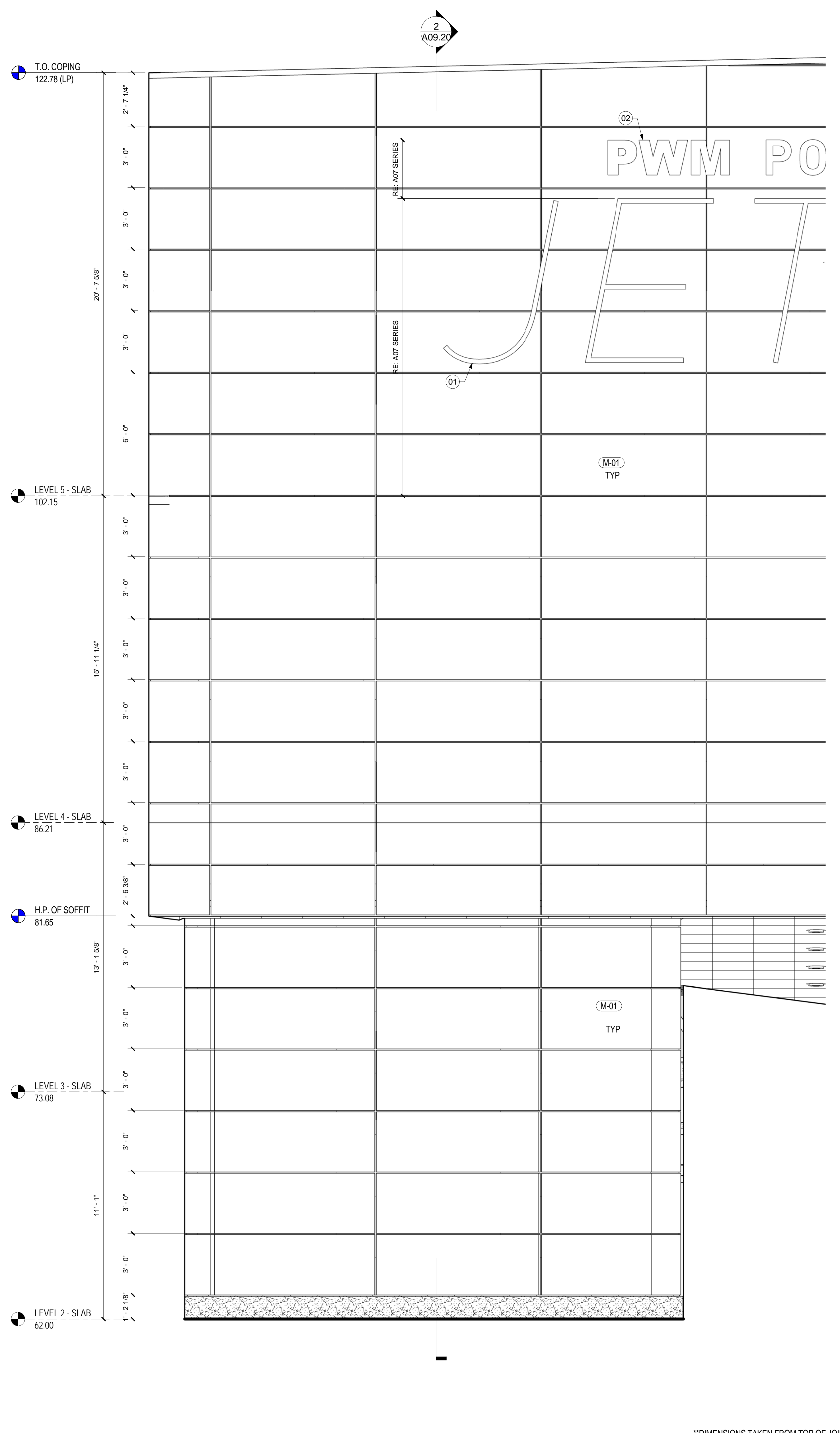


WALL TYPE A - SECTION

SCALE: 3/8" = 1'-0" A09.20



WALL TYPE A.1 - ELEVATION WEST

SCALE: 3/8" = 1'-0" A09.00

SHEET NOTES

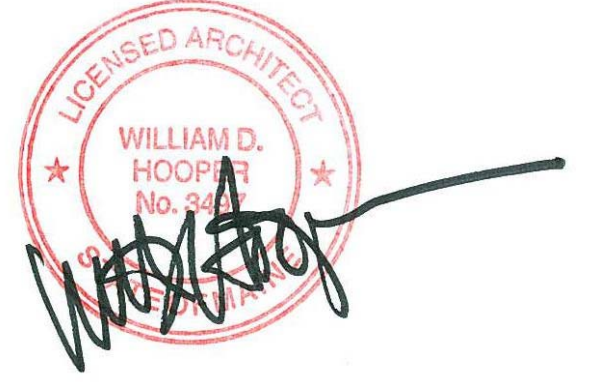
- 01 FACADE BRANDING GRAPHICS, BACK LIT EXTRUDED PIN MOUNTED LETTERING. RE: DETAIL 18/A12.10 FOR WALL PENETRATION. RE: A07 SERIES FOR MORE INFORMATION.
- 02 FACADE BRANDING GRAPHICS, INTERNALLY ILLUMINATED. RE: DETAIL 18/A12.10 FOR WALL PENETRATION. RE: A07 SERIES FOR MORE INFORMATION.
- 03 AREA OF REMOVABLE METAL PANELS FOR ACCESS TO CHILLERS.
- 04 EXPOSED STEEL TO BE GALVANIZED
- 05 LINE OF GYPSUM BOARD LEDGE BELOW

Portland International Jetport
1001 Westbrook Street
Portland, Maine 04102

Gensler
2020 K Street, Northwest
Suite 200
Washington DC 20006
Telephone 202.721.5200
Facsimile 202.872.8587

Date	Description
07/11/08	SCHEMATIC DESIGN
09/22/08	DESIGN DEVELOPMENT
12/03/08	75% CONSTRUCTION DOCUMENTS
01/23/09	95% CONSTRUCTION DOCUMENTS
10/26/09	ISSUED FOR PERMIT
2 11/12/09	ADDENDUM #2
145 09/01/11	ISSUED FOR CONSTRUCTION

Seal/Signature



Project Name
PWM Terminal Enhancement

Project Number
09.6395.000

Description
WALL TYPE A

Scale
3/8" = 1'-0"

A09.20

© 2009 Gensler