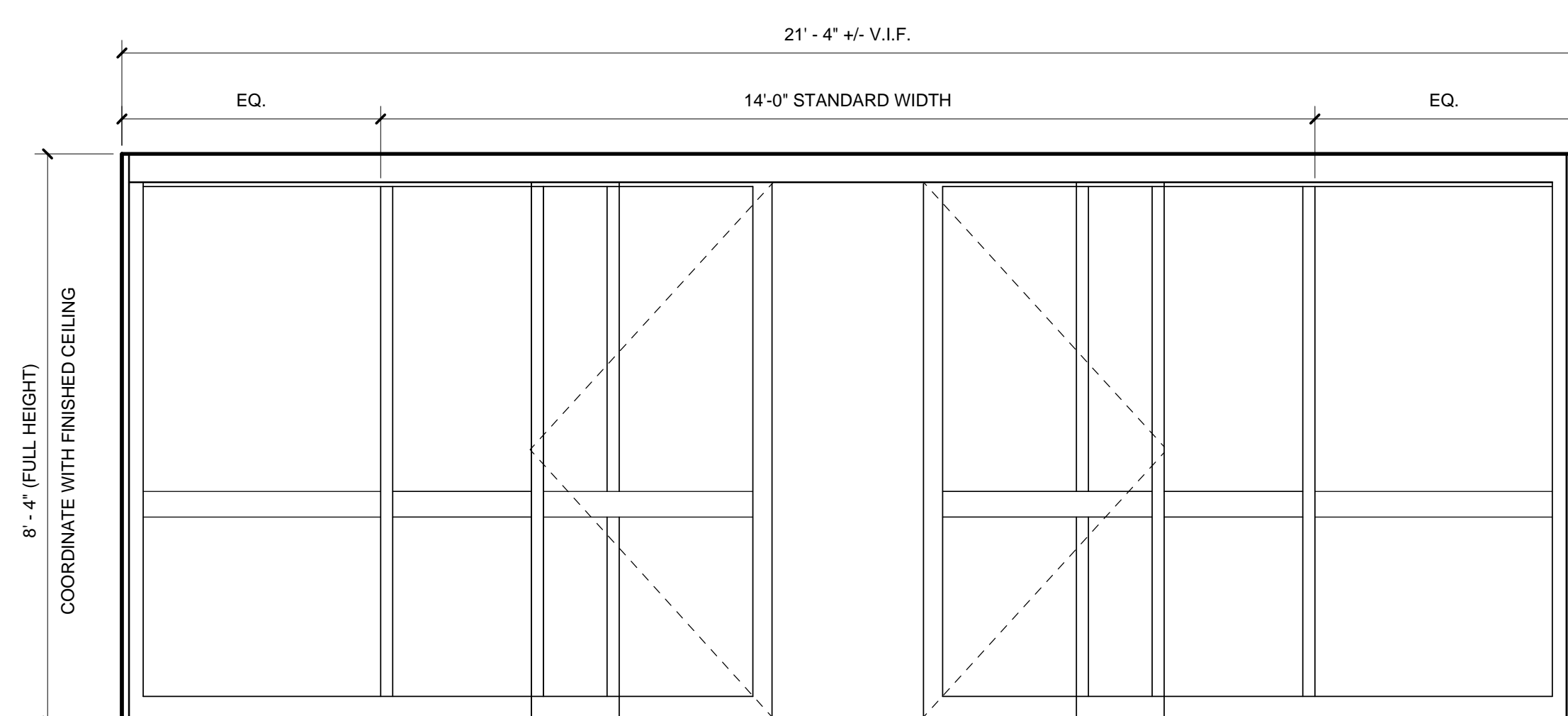


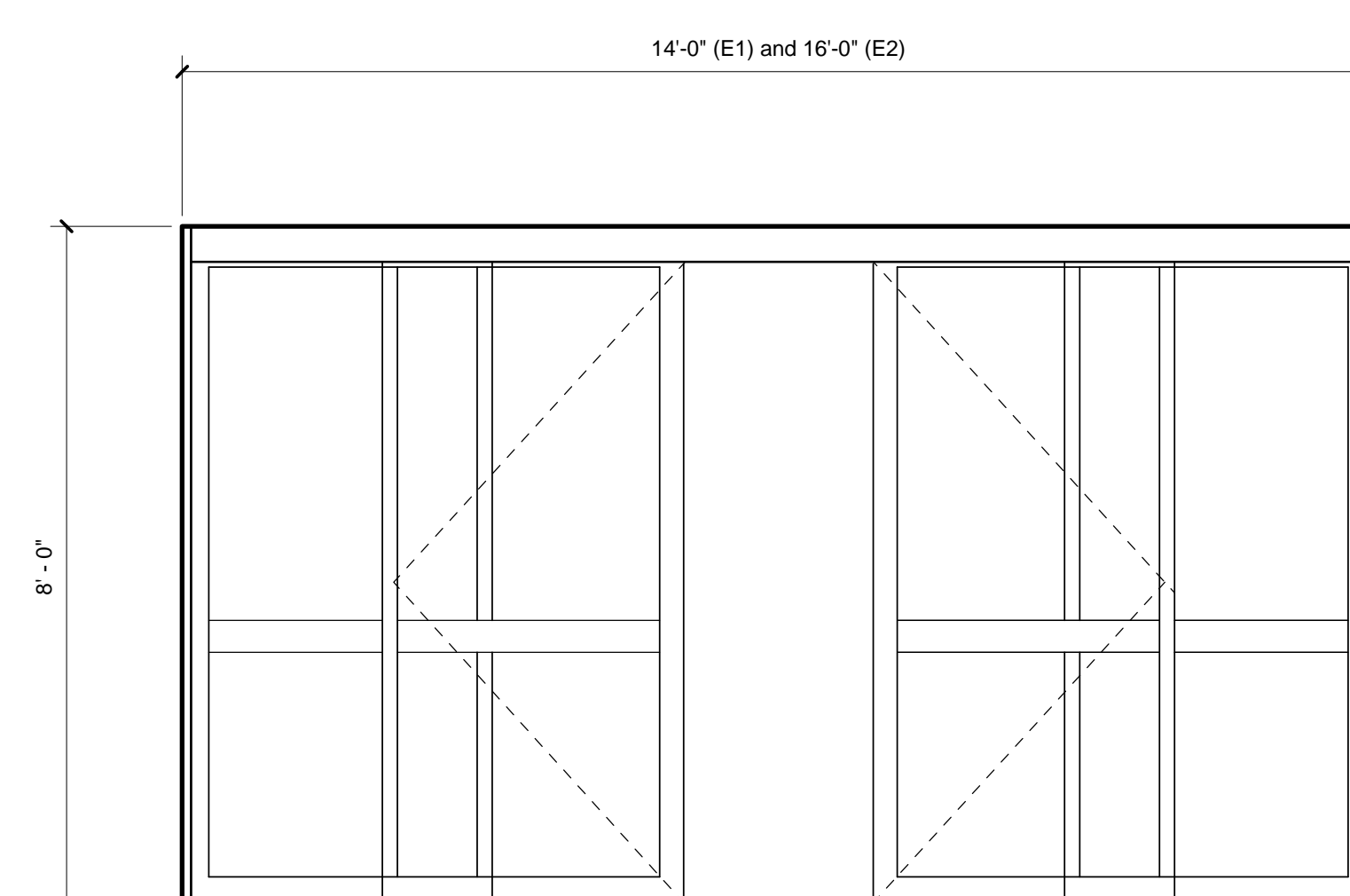
SHEET NOTES

Portland International
Jetport
1001 Westbrook Street
Portland, Maine 04102

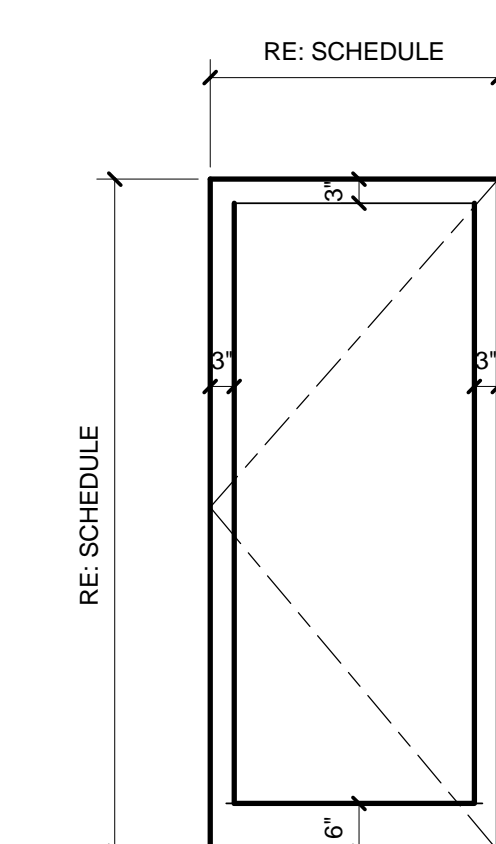
Gensler
2020 K Street, Northwest
Suite 200
Washington, DC 20006
Telephone 202.721.5200
Facsimile 202.872.8587



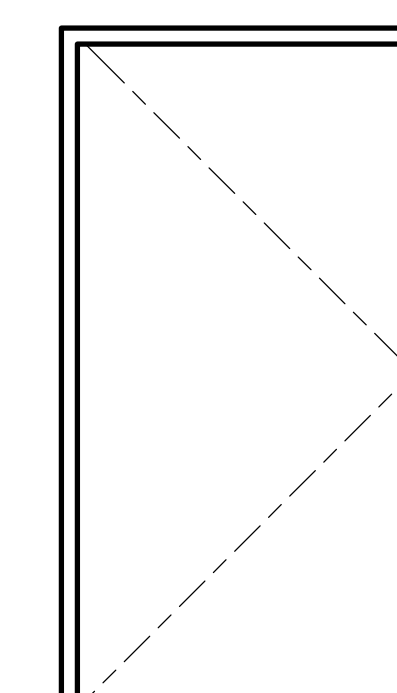
DOOR TYPE E3
AUTOMATIC ENTRANCES WITH BREAK-OUT PANELS; ADDITIONAL STANDARD SIDELITES WITH MIDRAILS



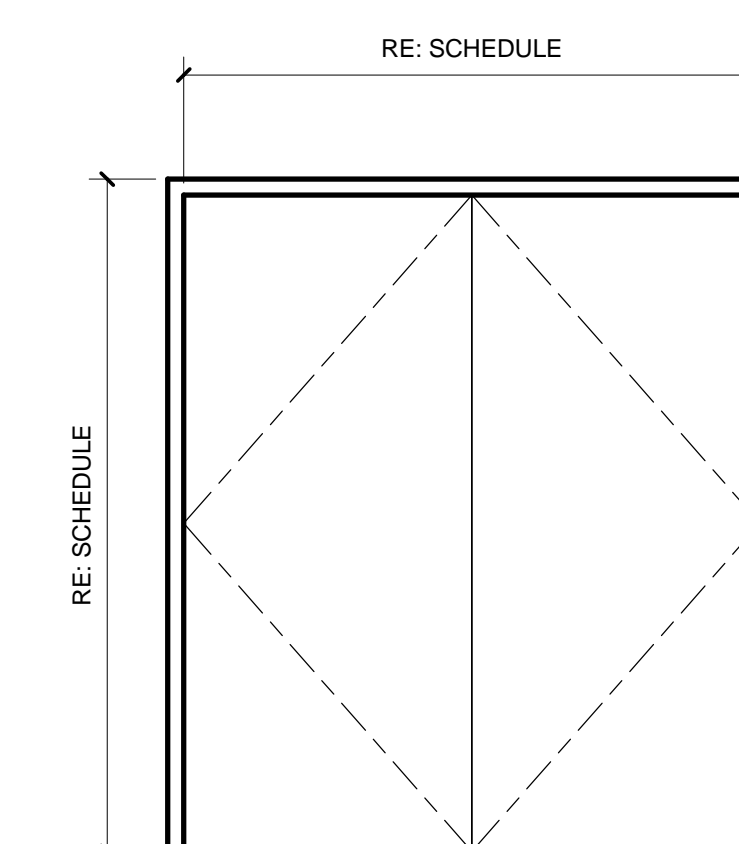
DOOR TYPE E1 & E2
AUTOMATIC ENTRANCES WITH BREAK-OUT PANELS



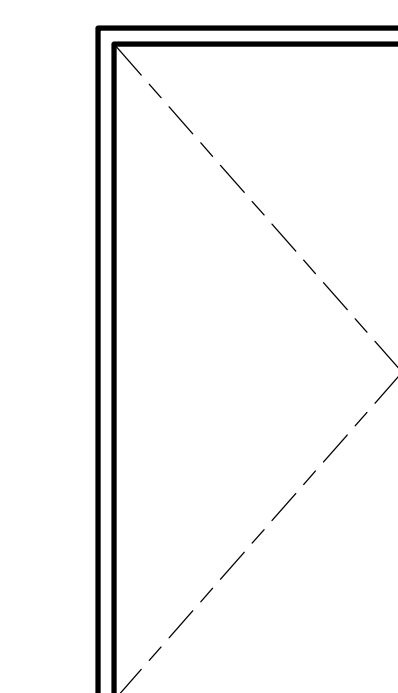
DOOR TYPE A5
SINGLE FLUSH DOOR WITH GLASS PANEL



DOOR TYPE A4
FLUSH DOOR



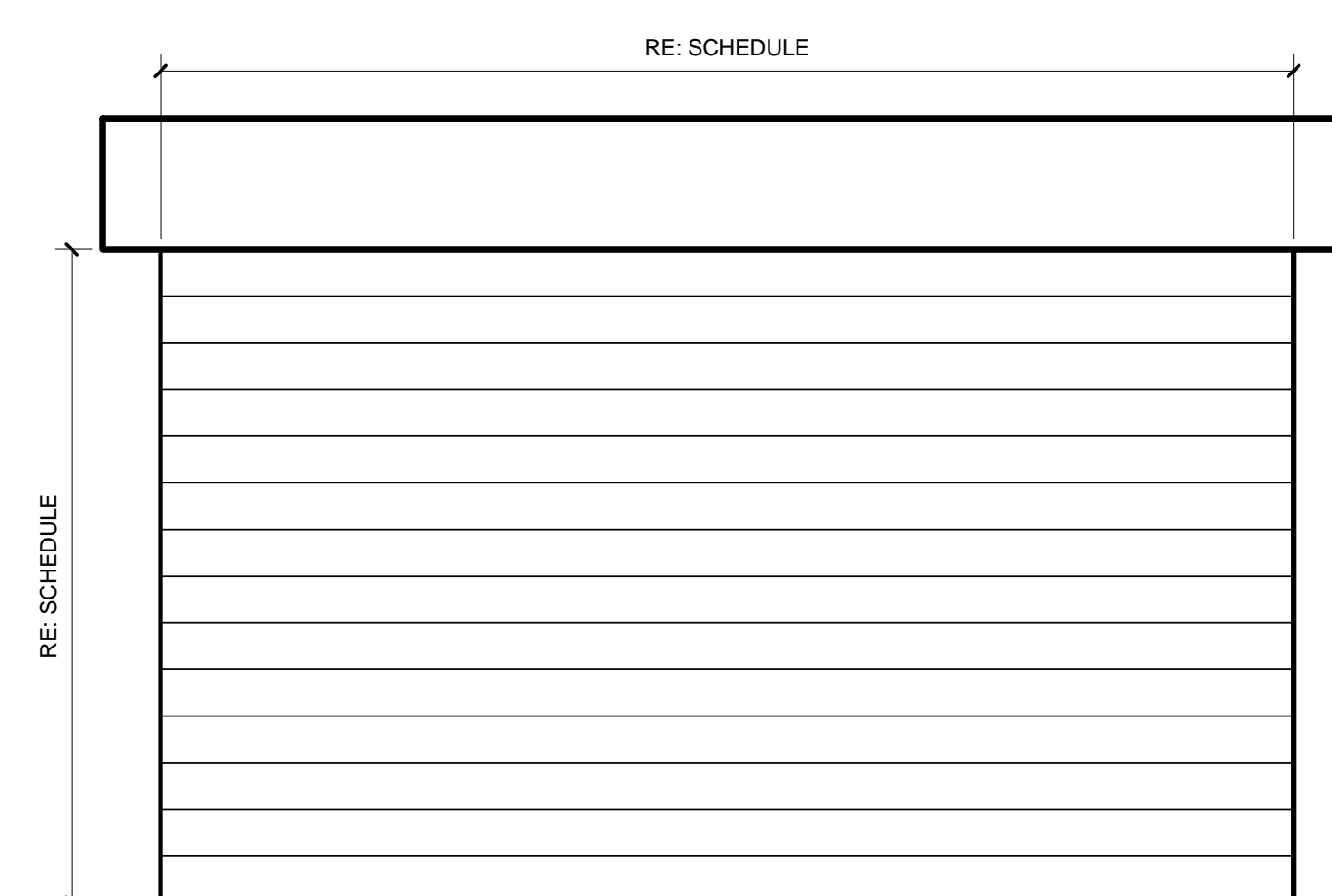
DOOR TYPE A2
DOUBLE FLUSH DOOR



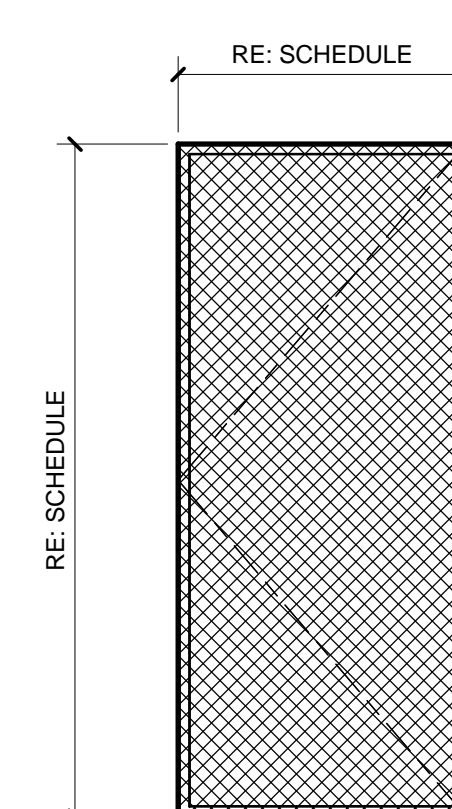
DOOR TYPE A1
FLUSH DOOR

INTERIOR/EXTERIOR DOOR TYPES

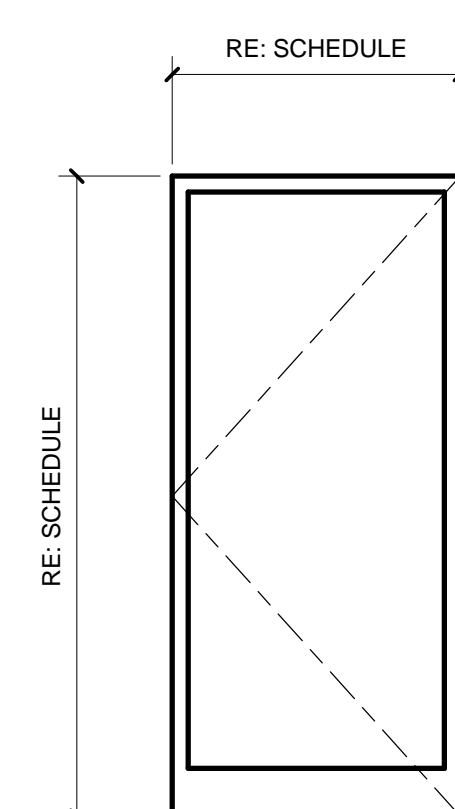
INTERIOR/EXTERIOR DOOR TYPES



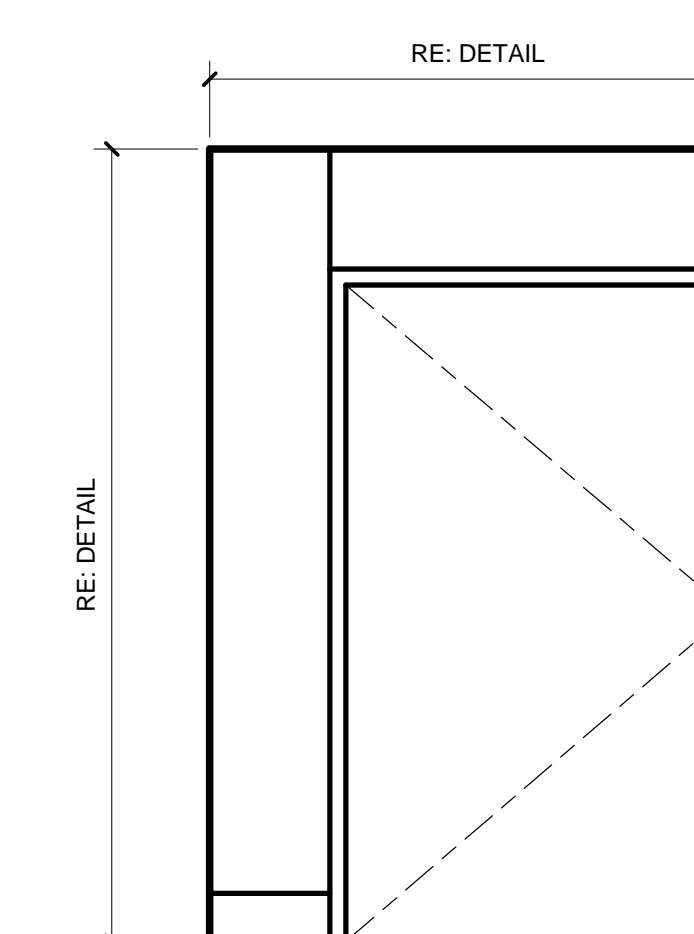
DOOR TYPE F
FIRE SHUTTER



DOOR TYPE D
WIRE MESH DOOR



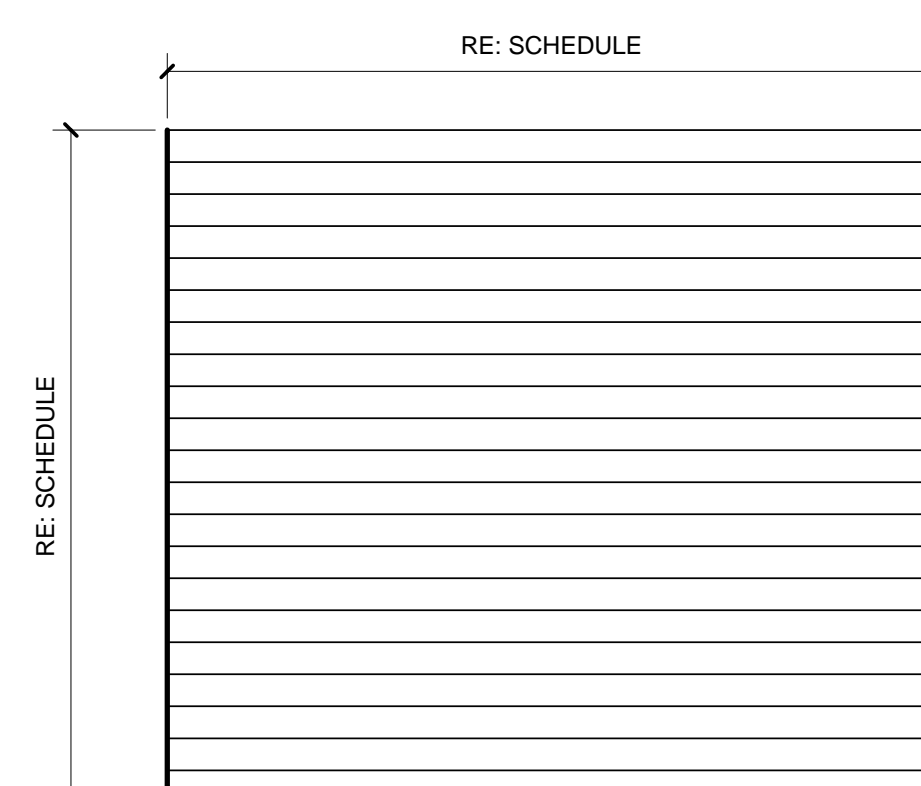
DOOR TYPE C
SINGLE ALUMINUM STOREFRONT DOOR



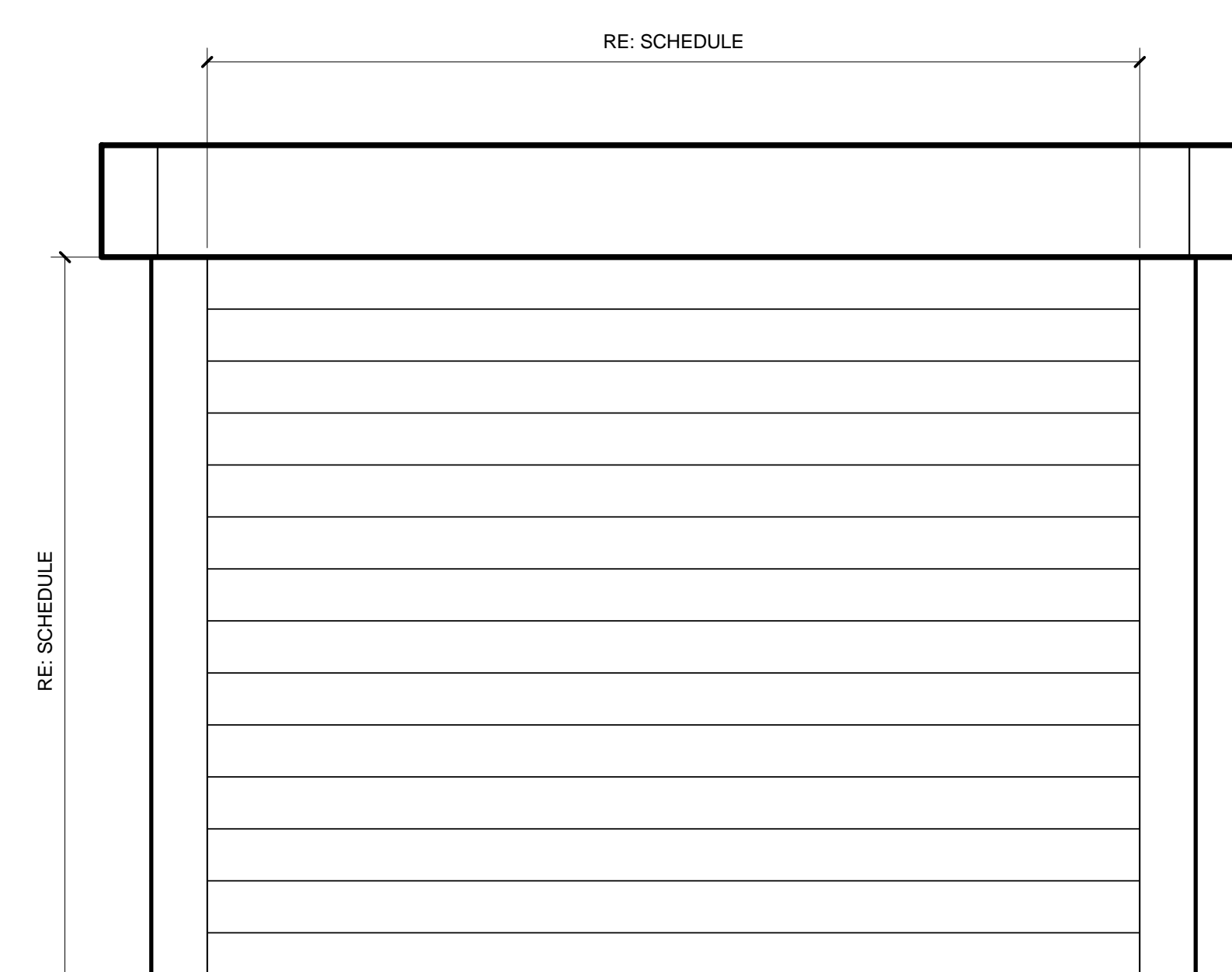
DOOR TYPE B
SINGLE ST. STL. DOOR WITH SIDE AND TOP PANELS

INTERIOR DOOR TYPES

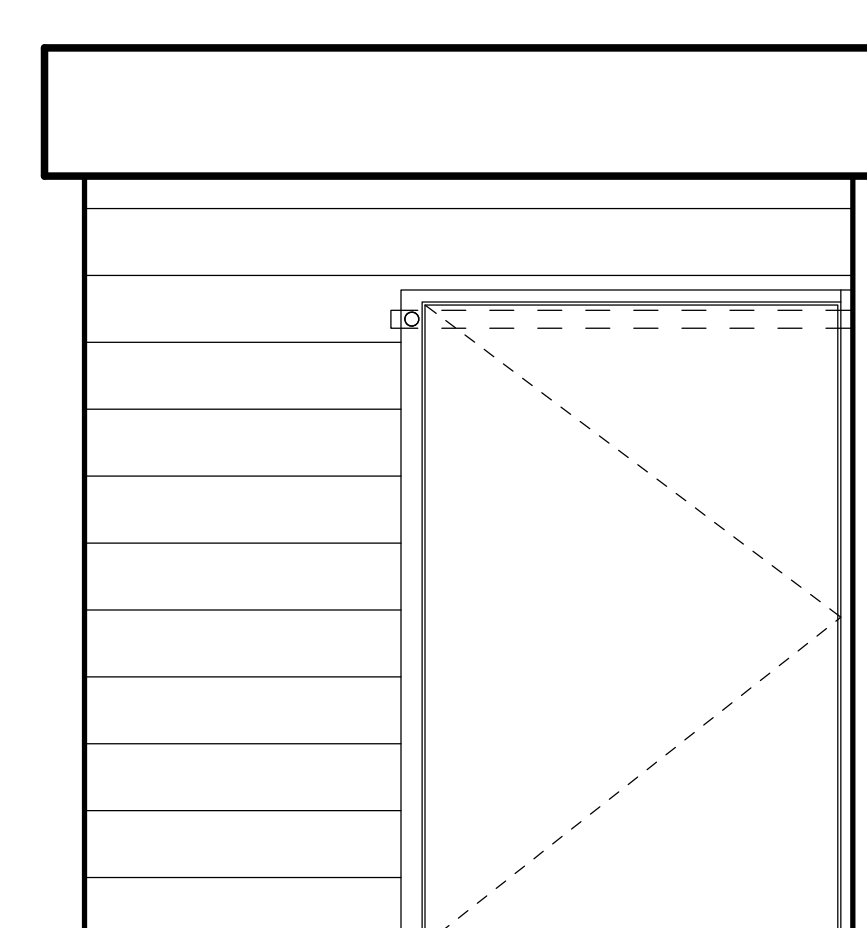
INTERIOR DOOR TYPES



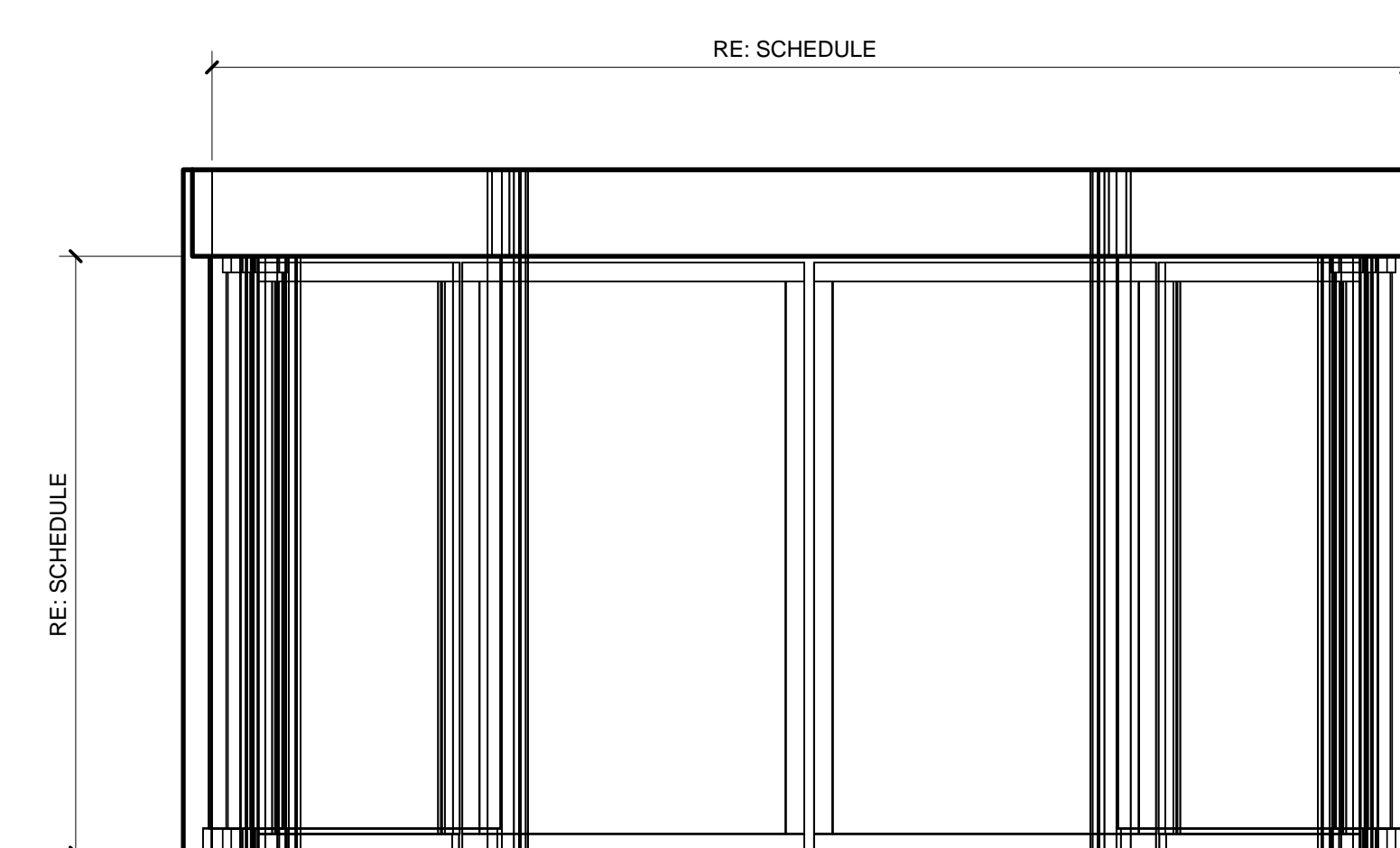
DOOR TYPE N
UPWARD ACTING SECTIONAL STEEL DOOR



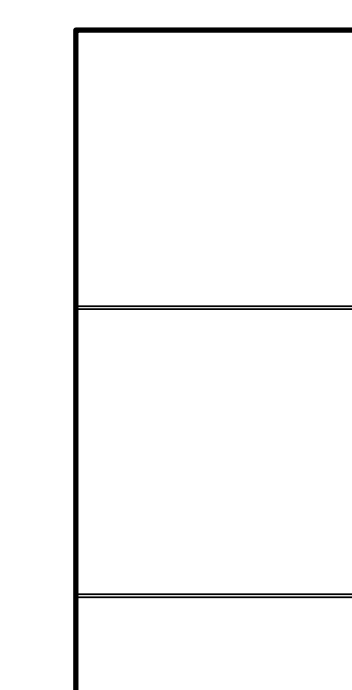
DOOR TYPE M
FAST ACTING OVERHEAD COILING DOOR



DOOR TYPE L
OVERHEAD COILING DOOR WITH EGRESS OPENING



DOOR TYPE K
REVOLVING DOOR



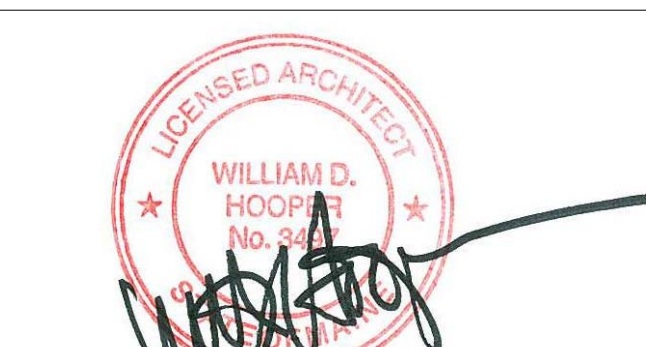
DOOR TYPE J
BLIND DOOR

EXTERIOR DOOR TYPES

EXTERIOR DOOR TYPES

Date	Description
09/22/08	DESIGN DEVELOPMENT
12/03/08	75% CONSTRUCTION DOCUMENTS
01/23/09	95% CONSTRUCTION DOCUMENTS
10/26/09	ISSUED FOR PERMIT
11/12/09	ADDENDUM #2
01/15/10	BULLETIN #3
03/09/11	BULLETIN #79
09/01/11	ISSUED FOR CONSTRUCTION

Seal/Signature



Project Name
PWM Terminal Enhancement

Project Number
09.6395.000

Description
DOOR TYPES

Scale
1/2" = 1'-0"

A00.31

© 2009 Gensler