



Daily Observation Report

Project: <u>TERMINAL ENCHANCEMENT @ PORTLAND</u>		Time: _____	End Time _____	Mileage: _____	End _____
Project No.: <u>557-14</u>	Tolls: <u>1.70</u>	<u>JETPORT</u>		_____	Begin _____
Per Diem/Lodging: _____		✓ <u>3.0</u>	Total Time	✓ <u>26</u>	Total

Observations:

In-Place Densities Done \_\_\_\_\_ All IPDs meet Specifications Reported to \_\_\_\_\_  
 Not all IPDs meet Specifications Reported to \_\_\_\_\_

Phone Calls:

ON SITE TO PERFORM PULL TESTS OF FIREPROOFING.  
 I INSTALLED (2) TESTS ON BEAMS IN LEVELS, ZONES,  
 FRIDAY 1/21.

SEE ATTACHED SKETCH FOR LOCATION OF PULL TESTS

TEST 1: 3.25" DIA CAP AREA =  $\pi R^2$   
 COL LINE  $\pi(1.625)^2 = 8.30"$   
 $Y8/XH-X61$   $ft^2 = 8.30/144 = .058ft^2$   
 PROJECT SPEC =  $200/.058 = 11.5$  MINIMUM PULL REQD

25.5 lbs PULL (FIREPROOFING FAILED)

$25.5/.058 = 439.7$  lbs/ft<sup>2</sup> (PASSED) > 200 lbs/ft<sup>2</sup>

TEST 2: 3.25" DIA CAP  $\pi(1.625^2) = 8.30/144 = .058ft^2$   
 COL LINE

$XF/Y75-Y6.5$  27.5 lbs PULL (FIREPROOFING FAILED)

$27.5/.058 = 474.1$  lbs/ft<sup>2</sup> (PASSED) > 200 lbs/ft<sup>2</sup>

Reviewed By: MGR

Signed: George S. Yank

<input type="checkbox"/> HNU _____ day	<input type="checkbox"/> Concrete Equipment _____ day	Monitoring Well Supplies
<input type="checkbox"/> Survey Level _____ day	<input type="checkbox"/> Nuc Densometer _____ day	_____ Bags of Bentonite _____ Locks
<input type="checkbox"/> Rebar Meter _____ day	<input type="checkbox"/> Coring Machine _____ Dia.	_____ 5 ft. Screen 2" PVC _____ Caps
_____ Bailers (Disposable)	_____ Inches Cored	_____ 10 ft. Screen 2" PVC _____ Points
<input type="checkbox"/> Water Level Ind. _____ day	<input type="checkbox"/> Generator <input type="checkbox"/> Taylor Rental	_____ 5 ft. Riser 2" PVC _____ Screw Caps
<input type="checkbox"/> Drill Rig _____ day	<input type="checkbox"/> Peristaltic Pump (note tubing used)	_____ 10 ft. Riser 2" PVC
<input type="checkbox"/> Backhoe _____ day	<input type="checkbox"/> Other _____	_____ Other _____

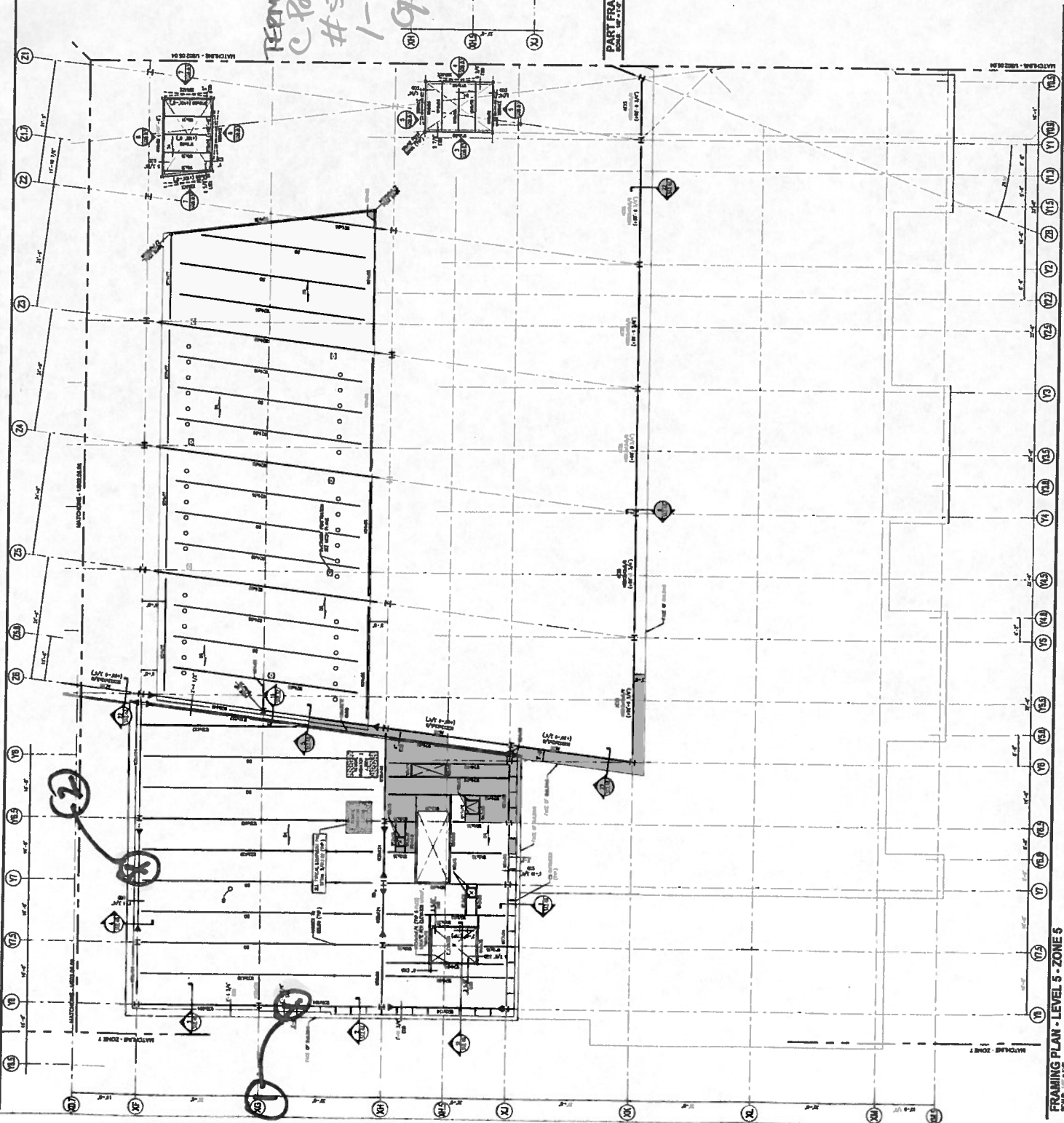
Portland International  
Jetport  
1001 Westbrook Street  
Portland, Maine 04102

**Gensler**  
ARCHITECTS  
1001 WESTBROOK STREET  
PORTLAND, MAINE 04102  
TEL: 603.761.1000  
FAX: 603.761.1001  
WWW.GENSLER.COM

**DBF ASSOCIATES, INC.**  
STRUCTURAL ENGINEERS  
1001 WESTBROOK STREET  
PORTLAND, MAINE 04102  
TEL: 603.761.1000  
FAX: 603.761.1001  
WWW.DBFASSOCIATES.COM

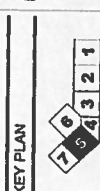
*TERMINAL EXCHANGE WENT  
C-PORTLAND JETPORT  
#557-14  
1-24-11  
GSM*

- SHEET NOTES**
1. MATCH LINE TO SHEET 502.05.01
  2. MATCH LINE TO SHEET 502.05.02
  3. MATCH LINE TO SHEET 502.05.03
  4. MATCH LINE TO SHEET 502.05.04
  5. MATCH LINE TO SHEET 502.05.05
  6. MATCH LINE TO SHEET 502.05.06
  7. MATCH LINE TO SHEET 502.05.07
  8. MATCH LINE TO SHEET 502.05.08
  9. MATCH LINE TO SHEET 502.05.09
  10. MATCH LINE TO SHEET 502.05.10
  11. MATCH LINE TO SHEET 502.05.11
  12. MATCH LINE TO SHEET 502.05.12
  13. MATCH LINE TO SHEET 502.05.13
  14. MATCH LINE TO SHEET 502.05.14
  15. MATCH LINE TO SHEET 502.05.15
  16. MATCH LINE TO SHEET 502.05.16
  17. MATCH LINE TO SHEET 502.05.17
  18. MATCH LINE TO SHEET 502.05.18
  19. MATCH LINE TO SHEET 502.05.19
  20. MATCH LINE TO SHEET 502.05.20
  21. MATCH LINE TO SHEET 502.05.21
  22. MATCH LINE TO SHEET 502.05.22
  23. MATCH LINE TO SHEET 502.05.23
  24. MATCH LINE TO SHEET 502.05.24
  25. MATCH LINE TO SHEET 502.05.25
  26. MATCH LINE TO SHEET 502.05.26
  27. MATCH LINE TO SHEET 502.05.27
  28. MATCH LINE TO SHEET 502.05.28
  29. MATCH LINE TO SHEET 502.05.29
  30. MATCH LINE TO SHEET 502.05.30
  31. MATCH LINE TO SHEET 502.05.31
  32. MATCH LINE TO SHEET 502.05.32
  33. MATCH LINE TO SHEET 502.05.33
  34. MATCH LINE TO SHEET 502.05.34
  35. MATCH LINE TO SHEET 502.05.35
  36. MATCH LINE TO SHEET 502.05.36
  37. MATCH LINE TO SHEET 502.05.37
  38. MATCH LINE TO SHEET 502.05.38
  39. MATCH LINE TO SHEET 502.05.39
  40. MATCH LINE TO SHEET 502.05.40
  41. MATCH LINE TO SHEET 502.05.41
  42. MATCH LINE TO SHEET 502.05.42
  43. MATCH LINE TO SHEET 502.05.43
  44. MATCH LINE TO SHEET 502.05.44
  45. MATCH LINE TO SHEET 502.05.45
  46. MATCH LINE TO SHEET 502.05.46
  47. MATCH LINE TO SHEET 502.05.47
  48. MATCH LINE TO SHEET 502.05.48
  49. MATCH LINE TO SHEET 502.05.49
  50. MATCH LINE TO SHEET 502.05.50
  51. MATCH LINE TO SHEET 502.05.51
  52. MATCH LINE TO SHEET 502.05.52
  53. MATCH LINE TO SHEET 502.05.53
  54. MATCH LINE TO SHEET 502.05.54
  55. MATCH LINE TO SHEET 502.05.55
  56. MATCH LINE TO SHEET 502.05.56
  57. MATCH LINE TO SHEET 502.05.57
  58. MATCH LINE TO SHEET 502.05.58
  59. MATCH LINE TO SHEET 502.05.59
  60. MATCH LINE TO SHEET 502.05.60
  61. MATCH LINE TO SHEET 502.05.61
  62. MATCH LINE TO SHEET 502.05.62
  63. MATCH LINE TO SHEET 502.05.63
  64. MATCH LINE TO SHEET 502.05.64
  65. MATCH LINE TO SHEET 502.05.65
  66. MATCH LINE TO SHEET 502.05.66
  67. MATCH LINE TO SHEET 502.05.67
  68. MATCH LINE TO SHEET 502.05.68
  69. MATCH LINE TO SHEET 502.05.69
  70. MATCH LINE TO SHEET 502.05.70
  71. MATCH LINE TO SHEET 502.05.71
  72. MATCH LINE TO SHEET 502.05.72
  73. MATCH LINE TO SHEET 502.05.73
  74. MATCH LINE TO SHEET 502.05.74
  75. MATCH LINE TO SHEET 502.05.75
  76. MATCH LINE TO SHEET 502.05.76
  77. MATCH LINE TO SHEET 502.05.77
  78. MATCH LINE TO SHEET 502.05.78
  79. MATCH LINE TO SHEET 502.05.79
  80. MATCH LINE TO SHEET 502.05.80
  81. MATCH LINE TO SHEET 502.05.81
  82. MATCH LINE TO SHEET 502.05.82
  83. MATCH LINE TO SHEET 502.05.83
  84. MATCH LINE TO SHEET 502.05.84
  85. MATCH LINE TO SHEET 502.05.85
  86. MATCH LINE TO SHEET 502.05.86
  87. MATCH LINE TO SHEET 502.05.87
  88. MATCH LINE TO SHEET 502.05.88
  89. MATCH LINE TO SHEET 502.05.89
  90. MATCH LINE TO SHEET 502.05.90
  91. MATCH LINE TO SHEET 502.05.91
  92. MATCH LINE TO SHEET 502.05.92
  93. MATCH LINE TO SHEET 502.05.93
  94. MATCH LINE TO SHEET 502.05.94
  95. MATCH LINE TO SHEET 502.05.95
  96. MATCH LINE TO SHEET 502.05.96
  97. MATCH LINE TO SHEET 502.05.97
  98. MATCH LINE TO SHEET 502.05.98
  99. MATCH LINE TO SHEET 502.05.99
  100. MATCH LINE TO SHEET 502.05.100



**PART FRAMING PLAN (REL. 4102-47) 2**

- GENERAL NOTES**
1. ALL DIMENSIONS ARE IN FEET AND INCHES UNLESS OTHERWISE NOTED.
  2. ALL DIMENSIONS ARE TO FACE UNLESS OTHERWISE NOTED.
  3. ALL DIMENSIONS ARE TO CENTER UNLESS OTHERWISE NOTED.
  4. ALL DIMENSIONS ARE TO EDGE UNLESS OTHERWISE NOTED.
  5. ALL DIMENSIONS ARE TO CORNER UNLESS OTHERWISE NOTED.
  6. ALL DIMENSIONS ARE TO MIDDLE UNLESS OTHERWISE NOTED.
  7. ALL DIMENSIONS ARE TO SURFACE UNLESS OTHERWISE NOTED.
  8. ALL DIMENSIONS ARE TO CENTERLINE UNLESS OTHERWISE NOTED.
  9. ALL DIMENSIONS ARE TO CENTERLINE UNLESS OTHERWISE NOTED.
  10. ALL DIMENSIONS ARE TO CENTERLINE UNLESS OTHERWISE NOTED.
  11. ALL DIMENSIONS ARE TO CENTERLINE UNLESS OTHERWISE NOTED.
  12. ALL DIMENSIONS ARE TO CENTERLINE UNLESS OTHERWISE NOTED.
  13. ALL DIMENSIONS ARE TO CENTERLINE UNLESS OTHERWISE NOTED.
  14. ALL DIMENSIONS ARE TO CENTERLINE UNLESS OTHERWISE NOTED.
  15. ALL DIMENSIONS ARE TO CENTERLINE UNLESS OTHERWISE NOTED.
  16. ALL DIMENSIONS ARE TO CENTERLINE UNLESS OTHERWISE NOTED.
  17. ALL DIMENSIONS ARE TO CENTERLINE UNLESS OTHERWISE NOTED.
  18. ALL DIMENSIONS ARE TO CENTERLINE UNLESS OTHERWISE NOTED.
  19. ALL DIMENSIONS ARE TO CENTERLINE UNLESS OTHERWISE NOTED.
  20. ALL DIMENSIONS ARE TO CENTERLINE UNLESS OTHERWISE NOTED.
  21. ALL DIMENSIONS ARE TO CENTERLINE UNLESS OTHERWISE NOTED.
  22. ALL DIMENSIONS ARE TO CENTERLINE UNLESS OTHERWISE NOTED.
  23. ALL DIMENSIONS ARE TO CENTERLINE UNLESS OTHERWISE NOTED.
  24. ALL DIMENSIONS ARE TO CENTERLINE UNLESS OTHERWISE NOTED.
  25. ALL DIMENSIONS ARE TO CENTERLINE UNLESS OTHERWISE NOTED.
  26. ALL DIMENSIONS ARE TO CENTERLINE UNLESS OTHERWISE NOTED.
  27. ALL DIMENSIONS ARE TO CENTERLINE UNLESS OTHERWISE NOTED.
  28. ALL DIMENSIONS ARE TO CENTERLINE UNLESS OTHERWISE NOTED.
  29. ALL DIMENSIONS ARE TO CENTERLINE UNLESS OTHERWISE NOTED.
  30. ALL DIMENSIONS ARE TO CENTERLINE UNLESS OTHERWISE NOTED.



**FRAMING PLAN - LEVEL 5 - ZONE 5**

**S02.05.05**

