



**SITE WORK  
DAILY FIELD REPORT**

PROJECT: Terminal Enhancement at the Portland International Jetport

DATE: 8/9/2011

PROJECT LOCATION: Portland, Maine

PROJECT NO.: 0557-014

CLIENT: City of Portland

WEATHER: Sunny

CONTRACTOR: Turner Construction Co.

PREVIOUS DATE ON SITE: 7/13/2011

Time on-site: 4.75 hrs, 28 mi travel, Tolls: \$0.00

Nuclear Gauge: NA

55cy. ± placed for compactor slab along northwest side of building addition at jetport.  
Arrived at jetport at 11:50am for noontime placement. First truck arrived at 12:15pm.  
Sampled 2<sup>nd</sup> truck for testing; 1 set of cylinders made.

*MJK*

Michael J Kramlich

Prepared By

*MTZ*

Matthew Grady

Reviewed By

R. W. Gillespie & Associates 86 industrial Park Rd., Suite 4, Saco, ME 04072- (207)286-8008

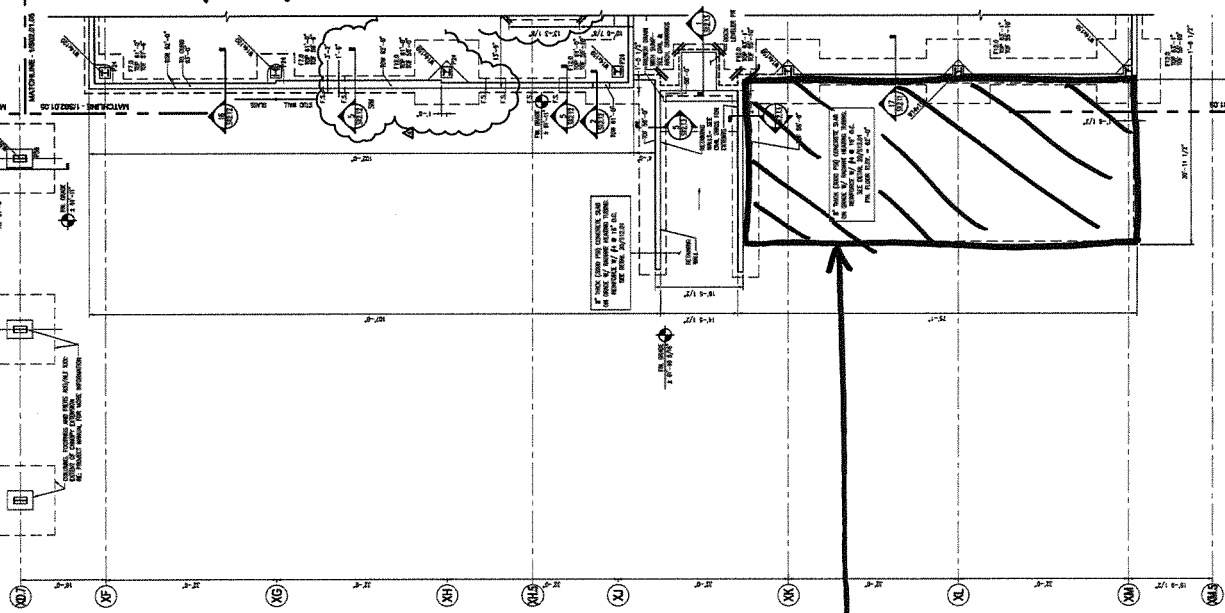
**SHEET NOTES**

1. REFER TO SHEET 182-1-1 FOR ALL NOTES ON SHEET 182-1-1.
2. ALL DIMENSIONS UNLESS OTHERWISE NOTED ARE IN FEET AND INCHES.
3. ALL DIMENSIONS UNLESS OTHERWISE NOTED ARE TO FACE UNLESS OTHERWISE NOTED.
4. ALL DIMENSIONS UNLESS OTHERWISE NOTED ARE TO FACE UNLESS OTHERWISE NOTED.
5. ALL DIMENSIONS UNLESS OTHERWISE NOTED ARE TO FACE UNLESS OTHERWISE NOTED.
6. ALL DIMENSIONS UNLESS OTHERWISE NOTED ARE TO FACE UNLESS OTHERWISE NOTED.
7. ALL DIMENSIONS UNLESS OTHERWISE NOTED ARE TO FACE UNLESS OTHERWISE NOTED.
8. ALL DIMENSIONS UNLESS OTHERWISE NOTED ARE TO FACE UNLESS OTHERWISE NOTED.
9. ALL DIMENSIONS UNLESS OTHERWISE NOTED ARE TO FACE UNLESS OTHERWISE NOTED.
10. ALL DIMENSIONS UNLESS OTHERWISE NOTED ARE TO FACE UNLESS OTHERWISE NOTED.

**Portland International Jetport**  
 1001 Westwood Street  
 Portland, Maine 04102

**Gensler**  
**WEST ASSOCIATES, INC.**  
 ARCHITECTS

**PORTLAND INT'L JETPORT  
 TERMINAL EXPANSION  
 0557-014  
 8/19/11  
 HSK**



**55 yds ±  
 4500 PSI  
 CONCRETE  
 PLACEMENT**

**GENERAL NOTES**

1. ALL DIMENSIONS UNLESS OTHERWISE NOTED ARE TO FACE UNLESS OTHERWISE NOTED.
2. ALL DIMENSIONS UNLESS OTHERWISE NOTED ARE TO FACE UNLESS OTHERWISE NOTED.
3. ALL DIMENSIONS UNLESS OTHERWISE NOTED ARE TO FACE UNLESS OTHERWISE NOTED.
4. ALL DIMENSIONS UNLESS OTHERWISE NOTED ARE TO FACE UNLESS OTHERWISE NOTED.
5. ALL DIMENSIONS UNLESS OTHERWISE NOTED ARE TO FACE UNLESS OTHERWISE NOTED.
6. ALL DIMENSIONS UNLESS OTHERWISE NOTED ARE TO FACE UNLESS OTHERWISE NOTED.
7. ALL DIMENSIONS UNLESS OTHERWISE NOTED ARE TO FACE UNLESS OTHERWISE NOTED.
8. ALL DIMENSIONS UNLESS OTHERWISE NOTED ARE TO FACE UNLESS OTHERWISE NOTED.
9. ALL DIMENSIONS UNLESS OTHERWISE NOTED ARE TO FACE UNLESS OTHERWISE NOTED.
10. ALL DIMENSIONS UNLESS OTHERWISE NOTED ARE TO FACE UNLESS OTHERWISE NOTED.
11. ALL DIMENSIONS UNLESS OTHERWISE NOTED ARE TO FACE UNLESS OTHERWISE NOTED.
12. ALL DIMENSIONS UNLESS OTHERWISE NOTED ARE TO FACE UNLESS OTHERWISE NOTED.
13. ALL DIMENSIONS UNLESS OTHERWISE NOTED ARE TO FACE UNLESS OTHERWISE NOTED.
14. ALL DIMENSIONS UNLESS OTHERWISE NOTED ARE TO FACE UNLESS OTHERWISE NOTED.
15. ALL DIMENSIONS UNLESS OTHERWISE NOTED ARE TO FACE UNLESS OTHERWISE NOTED.
16. ALL DIMENSIONS UNLESS OTHERWISE NOTED ARE TO FACE UNLESS OTHERWISE NOTED.
17. ALL DIMENSIONS UNLESS OTHERWISE NOTED ARE TO FACE UNLESS OTHERWISE NOTED.
18. ALL DIMENSIONS UNLESS OTHERWISE NOTED ARE TO FACE UNLESS OTHERWISE NOTED.
19. ALL DIMENSIONS UNLESS OTHERWISE NOTED ARE TO FACE UNLESS OTHERWISE NOTED.
20. ALL DIMENSIONS UNLESS OTHERWISE NOTED ARE TO FACE UNLESS OTHERWISE NOTED.

**KEY PLAN**





**SITE WORK  
DAILY FIELD REPORT**

PROJECT: Terminal Enhancement at the Portland International Jetport

DATE: 8/10/2011

PROJECT LOCATION: Portland, Maine

PROJECT NO.: 0557-014

CLIENT: City of Portland

WEATHER: Sunny

CONTRACTOR: Turner Construction Co.

PREVIOUS DATE ON SITE: 8/9/2011

Time on-site: 1.25 hrs, 28 mi travel, Tolls: \$0.00

Nuclear Gauge: NA

CPU: 1 set of 4 cylinders cast 8/9/2011.

*MJK*

Michael J Kramlich

Prepared By

*MTZ*

Matthew Grady

Reviewed By

R. W. Gillespie & Associates 86 industrial Park Rd., Suite 4, Saco, ME 04072- (207)286-8008