



**SITE WORK  
DAILY FIELD REPORT**

PROJECT: Terminal Enhancement at the Portland International Jetport  
DATE: 8/17/2010  
PROJECT LOCATION: Portland, Maine      PROJECT NO.: 557-14  
CLIENT: City of Portland      WEATHER: Sun  
CONTRACTOR: Turner Construction Co.  
PREVIOUS DATE ON SITE: 08/13/2010  
*ke*

Time on-site at 10 hrs, 10 mi travel, Tolls: \$0.00  
Nuc. Densometer – 1 day (L 500)

**AREA 'A'**

Upper lot: No work observed.

**AREAS 'B' AND 'C'**

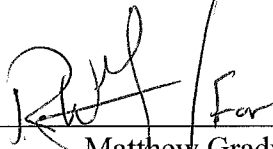
Gorham Sand & Gravel continued backfilling foundation walls and drain line along lines XM and XM.5 and footings and foundation wall inside building footprint in Zone 5. One pier located by parking garage also backfilled. IPDs taken on newly placed fill.

37.5 yd. concrete placed in walls in Zone 5 and footings and piers in Zone 4. 1 set of cylinders made.

---

Michael Kramlich

Prepared By

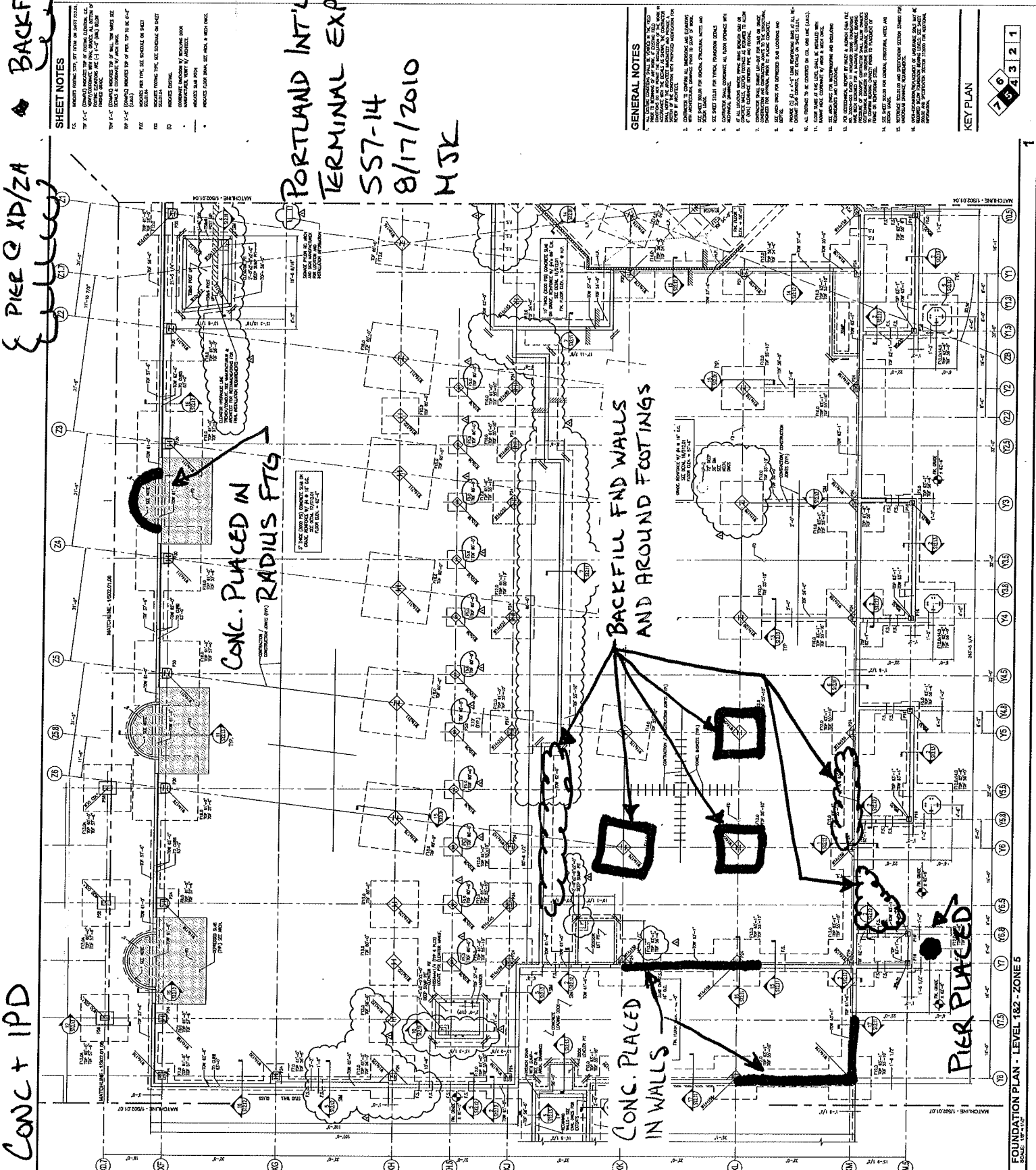


---

Matthew Grady

Reviewed By

CONC + IPD  
PIER @ XP/ZA  
BACKFILLED IN 10' DIA



CONC + IPD  
PIER @ XP/ZA  
BACKFILLED IN 10' DIA

CONC + IPD  
PIER @ XP/ZA  
BACKFILLED IN 10' DIA

CONC + IPD  
PIER @ XP/ZA  
BACKFILLED IN 10' DIA

Portland International  
Jetport  
1001 Westbrook Street  
Portland, Maine 04102

Gensler

MEEST ASSOCIATES, INC.  
1000 Main Street  
Portland, ME 04102  
Phone: 207.223.1222

PORTLAND INT'L JETPORT  
TERMINAL EXPANSION  
SS7-14  
8/17/2010  
HJK

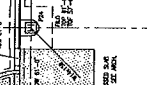
SHEET NOTES

1. REVIEW DRAWING FOR CONFLICTS WITH ANY OTHER DRAWINGS.
2. ALL DIMENSIONS ARE TO FACE UNLESS OTHERWISE NOTED.
3. ALL DIMENSIONS ARE TO FACE UNLESS OTHERWISE NOTED.
4. ALL DIMENSIONS ARE TO FACE UNLESS OTHERWISE NOTED.
5. ALL DIMENSIONS ARE TO FACE UNLESS OTHERWISE NOTED.
6. ALL DIMENSIONS ARE TO FACE UNLESS OTHERWISE NOTED.
7. ALL DIMENSIONS ARE TO FACE UNLESS OTHERWISE NOTED.
8. ALL DIMENSIONS ARE TO FACE UNLESS OTHERWISE NOTED.
9. ALL DIMENSIONS ARE TO FACE UNLESS OTHERWISE NOTED.
10. ALL DIMENSIONS ARE TO FACE UNLESS OTHERWISE NOTED.
11. ALL DIMENSIONS ARE TO FACE UNLESS OTHERWISE NOTED.
12. ALL DIMENSIONS ARE TO FACE UNLESS OTHERWISE NOTED.
13. ALL DIMENSIONS ARE TO FACE UNLESS OTHERWISE NOTED.
14. ALL DIMENSIONS ARE TO FACE UNLESS OTHERWISE NOTED.
15. ALL DIMENSIONS ARE TO FACE UNLESS OTHERWISE NOTED.
16. ALL DIMENSIONS ARE TO FACE UNLESS OTHERWISE NOTED.
17. ALL DIMENSIONS ARE TO FACE UNLESS OTHERWISE NOTED.
18. ALL DIMENSIONS ARE TO FACE UNLESS OTHERWISE NOTED.
19. ALL DIMENSIONS ARE TO FACE UNLESS OTHERWISE NOTED.
20. ALL DIMENSIONS ARE TO FACE UNLESS OTHERWISE NOTED.

GENERAL NOTES

1. ALL DIMENSIONS ARE TO FACE UNLESS OTHERWISE NOTED.
2. ALL DIMENSIONS ARE TO FACE UNLESS OTHERWISE NOTED.
3. ALL DIMENSIONS ARE TO FACE UNLESS OTHERWISE NOTED.
4. ALL DIMENSIONS ARE TO FACE UNLESS OTHERWISE NOTED.
5. ALL DIMENSIONS ARE TO FACE UNLESS OTHERWISE NOTED.
6. ALL DIMENSIONS ARE TO FACE UNLESS OTHERWISE NOTED.
7. ALL DIMENSIONS ARE TO FACE UNLESS OTHERWISE NOTED.
8. ALL DIMENSIONS ARE TO FACE UNLESS OTHERWISE NOTED.
9. ALL DIMENSIONS ARE TO FACE UNLESS OTHERWISE NOTED.
10. ALL DIMENSIONS ARE TO FACE UNLESS OTHERWISE NOTED.
11. ALL DIMENSIONS ARE TO FACE UNLESS OTHERWISE NOTED.
12. ALL DIMENSIONS ARE TO FACE UNLESS OTHERWISE NOTED.
13. ALL DIMENSIONS ARE TO FACE UNLESS OTHERWISE NOTED.
14. ALL DIMENSIONS ARE TO FACE UNLESS OTHERWISE NOTED.
15. ALL DIMENSIONS ARE TO FACE UNLESS OTHERWISE NOTED.
16. ALL DIMENSIONS ARE TO FACE UNLESS OTHERWISE NOTED.
17. ALL DIMENSIONS ARE TO FACE UNLESS OTHERWISE NOTED.
18. ALL DIMENSIONS ARE TO FACE UNLESS OTHERWISE NOTED.
19. ALL DIMENSIONS ARE TO FACE UNLESS OTHERWISE NOTED.
20. ALL DIMENSIONS ARE TO FACE UNLESS OTHERWISE NOTED.

KEY PLAN



FOUNDATION PLAN - LEVEL 182 - ZONE 5

FOUN. PLAN

FOUNDATION PLAN - LEVEL 182 - ZONE 5

FOUNDATION PLAN - LEVEL 182 - ZONE 5

FOUNDATION PLAN - LEVEL 182 - ZONE 5

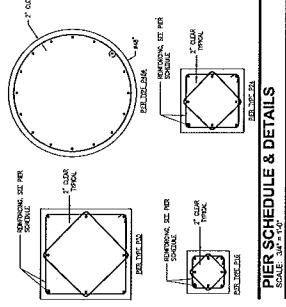
FOUNDATION PLAN - LEVEL 182 - ZONE 5

FOUNDATION PLAN - LEVEL 182 - ZONE 5

S02.01.05

1/7

CONC.



PIER SCHEDULE & DETAILS  
SCALE: 3/8" = 1'-0"

FOOTING TYPE	FOOTING DIMENSIONS	REINFORCING
F01	3'-0" x 3'-0"	#4 @ 12" C/S
F02	3'-0" x 4'-0"	#4 @ 12" C/S
F03	3'-0" x 5'-0"	#4 @ 12" C/S
F04	3'-0" x 6'-0"	#4 @ 12" C/S
F05	3'-0" x 7'-0"	#4 @ 12" C/S
F06	3'-0" x 8'-0"	#4 @ 12" C/S
F07	3'-0" x 9'-0"	#4 @ 12" C/S
F08	3'-0" x 10'-0"	#4 @ 12" C/S
F09	3'-0" x 11'-0"	#4 @ 12" C/S
F10	3'-0" x 12'-0"	#4 @ 12" C/S
F11	3'-0" x 13'-0"	#4 @ 12" C/S
F12	3'-0" x 14'-0"	#4 @ 12" C/S
F13	3'-0" x 15'-0"	#4 @ 12" C/S
F14	3'-0" x 16'-0"	#4 @ 12" C/S
F15	3'-0" x 17'-0"	#4 @ 12" C/S
F16	3'-0" x 18'-0"	#4 @ 12" C/S
F17	3'-0" x 19'-0"	#4 @ 12" C/S
F18	3'-0" x 20'-0"	#4 @ 12" C/S

FOOTING SCHEDULE & DETAILS  
SCALE: 3/8" = 1'-0"

PER SCHEDULE

PER TYPE	PER DIMENSIONS	VERTICAL REINFORCING	RES
PA	12" x 12"	#4 @ 12" C/S	#4 @ 12" S/S
PB	12" x 18"	#4 @ 12" C/S	#4 @ 12" S/S
PC	12" x 24"	#4 @ 12" C/S	#4 @ 12" S/S
PD	12" x 30"	#4 @ 12" C/S	#4 @ 12" S/S
PE	12" x 36"	#4 @ 12" C/S	#4 @ 12" S/S
PF	12" x 42"	#4 @ 12" C/S	#4 @ 12" S/S
PG	12" x 48"	#4 @ 12" C/S	#4 @ 12" S/S
PH	12" x 54"	#4 @ 12" C/S	#4 @ 12" S/S
PI	12" x 60"	#4 @ 12" C/S	#4 @ 12" S/S

8 PIERS PLACED

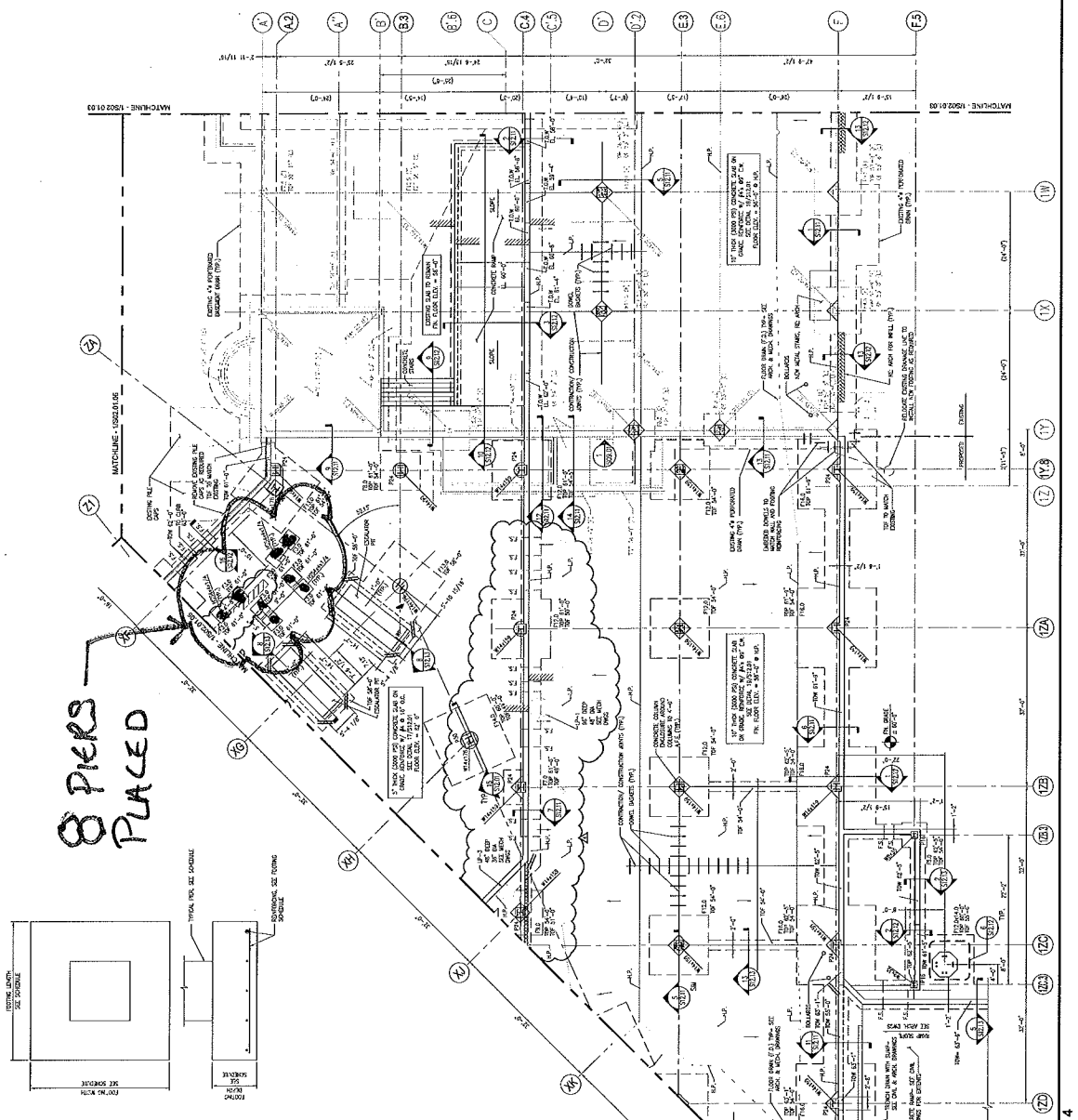
PORTLAND INT'L AIRPORT  
TERMINAL EXPANSION  
SS7-14  
8/17/2010  
MSK

**SHEET NOTES**

1. MATCHING COORDINATE TO SHEET SS7-13
2. ALL DIMENSIONS UNLESS OTHERWISE SHOWN ARE IN FEET AND INCHES (F'-X")
3. CONCRETE SHALL BE PLACED IN THE SHOWN PLACES AND SHALL BE COMPACTED TO THE DESIGN STRENGTH
4. REINFORCING SHALL BE PLACED IN THE SHOWN PLACES AND SHALL BE TIED TO THE DESIGN STRENGTH
5. ALL DIMENSIONS UNLESS OTHERWISE SHOWN ARE IN FEET AND INCHES (F'-X")
6. CONCRETE SHALL BE PLACED IN THE SHOWN PLACES AND SHALL BE COMPACTED TO THE DESIGN STRENGTH
7. REINFORCING SHALL BE PLACED IN THE SHOWN PLACES AND SHALL BE TIED TO THE DESIGN STRENGTH
8. ALL DIMENSIONS UNLESS OTHERWISE SHOWN ARE IN FEET AND INCHES (F'-X")
9. CONCRETE SHALL BE PLACED IN THE SHOWN PLACES AND SHALL BE COMPACTED TO THE DESIGN STRENGTH
10. REINFORCING SHALL BE PLACED IN THE SHOWN PLACES AND SHALL BE TIED TO THE DESIGN STRENGTH

**GENERAL NOTES**

1. ALL DIMENSIONS UNLESS OTHERWISE SHOWN ARE IN FEET AND INCHES (F'-X")
2. CONCRETE SHALL BE PLACED IN THE SHOWN PLACES AND SHALL BE COMPACTED TO THE DESIGN STRENGTH
3. REINFORCING SHALL BE PLACED IN THE SHOWN PLACES AND SHALL BE TIED TO THE DESIGN STRENGTH
4. ALL DIMENSIONS UNLESS OTHERWISE SHOWN ARE IN FEET AND INCHES (F'-X")
5. CONCRETE SHALL BE PLACED IN THE SHOWN PLACES AND SHALL BE COMPACTED TO THE DESIGN STRENGTH
6. REINFORCING SHALL BE PLACED IN THE SHOWN PLACES AND SHALL BE TIED TO THE DESIGN STRENGTH
7. ALL DIMENSIONS UNLESS OTHERWISE SHOWN ARE IN FEET AND INCHES (F'-X")
8. CONCRETE SHALL BE PLACED IN THE SHOWN PLACES AND SHALL BE COMPACTED TO THE DESIGN STRENGTH
9. REINFORCING SHALL BE PLACED IN THE SHOWN PLACES AND SHALL BE TIED TO THE DESIGN STRENGTH
10. ALL DIMENSIONS UNLESS OTHERWISE SHOWN ARE IN FEET AND INCHES (F'-X")
11. CONCRETE SHALL BE PLACED IN THE SHOWN PLACES AND SHALL BE COMPACTED TO THE DESIGN STRENGTH
12. REINFORCING SHALL BE PLACED IN THE SHOWN PLACES AND SHALL BE TIED TO THE DESIGN STRENGTH
13. ALL DIMENSIONS UNLESS OTHERWISE SHOWN ARE IN FEET AND INCHES (F'-X")
14. CONCRETE SHALL BE PLACED IN THE SHOWN PLACES AND SHALL BE COMPACTED TO THE DESIGN STRENGTH
15. REINFORCING SHALL BE PLACED IN THE SHOWN PLACES AND SHALL BE TIED TO THE DESIGN STRENGTH



FOUNDATION PLAN - LEVEL 1&2 - ZONE 4  
SCALE: 1/8" = 1'-0"

Portland International  
Jetport  
3001 Westbrook Street  
Portland, Maine 04102

**Gensler**  
2002 E Street, NW  
Washington, DC 20006  
Telephone: (202) 546-0800  
Fax: (202) 546-0801

**WEST ASSOCIATES, INC.**  
100 North Washington Street  
Portland, ME 04102  
Telephone: (202) 546-0800  
Fax: (202) 546-0801

DATE: 8/17/2010  
PROJECT: PORTLAND INTERNATIONAL AIRPORT TERMINAL EXPANSION  
SHEET: SS7-14  
SCALE: 1/8" = 1'-0"

**S02.01.04**  
FOUNDATION PLAN - LEVEL 1&2 - ZONE 4

1 2 3 4 5 6 7 8 9 10 11 12 13 14 15 16 17 18 19 20 21 22 23 24 25

2/2