



**SITE WORK
DAILY FIELD REPORT**

PROJECT: Terminal Enhancement at the Portland International Jetport
DATE: 8/16/2010
PROJECT LOCATION: Portland, Maine PROJECT NO.: 557-14
CLIENT: City of Portland WEATHER: Sun
CONTRACTOR: Turner Construction Co.
PREVIOUS DATE ON SITE: 08/13/2010

Time on-site at 5.25 hrs, 50 mi travel, Tolls: \$0.00
Nuc. Densometer – 1/2 day (L 500)

AREA 'A'
Upper lot: No work observed.

AREAS 'B' AND 'C'
Gorham Sand & Gravel continued backfilling foundation walls and drain line along lines XM and XM.5 in Zone 5. IPDs taken on newly placed fill.

Michael Kramlich

Prepared By

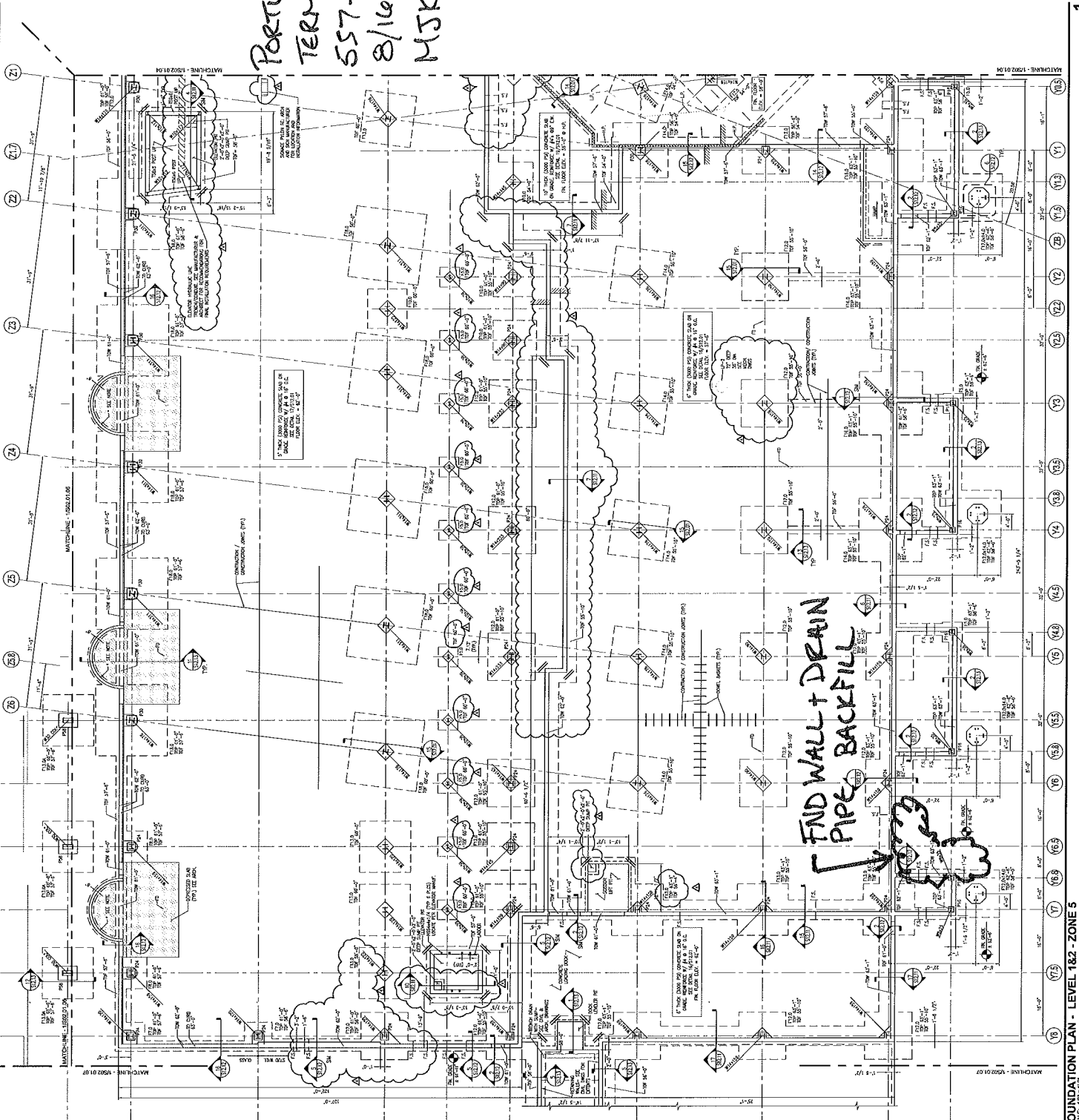
Matthew Grady

Reviewed By

PORTLAND INT'L JETPORT
TERMINAL EXPANSION
557-14
8/16/2010
MSK

SHEET NOTES

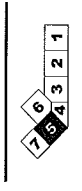
- 1. MATCHLINE - 15022.01/4
- 2. MATCHLINE - 15022.01/5
- 3. MATCHLINE - 15022.01/6
- 4. MATCHLINE - 15022.01/7
- 5. MATCHLINE - 15022.01/8
- 6. MATCHLINE - 15022.01/9
- 7. MATCHLINE - 15022.01/10
- 8. MATCHLINE - 15022.01/11
- 9. MATCHLINE - 15022.01/12
- 10. MATCHLINE - 15022.01/13
- 11. MATCHLINE - 15022.01/14
- 12. MATCHLINE - 15022.01/15
- 13. MATCHLINE - 15022.01/16
- 14. MATCHLINE - 15022.01/17
- 15. MATCHLINE - 15022.01/18
- 16. MATCHLINE - 15022.01/19
- 17. MATCHLINE - 15022.01/20
- 18. MATCHLINE - 15022.01/21
- 19. MATCHLINE - 15022.01/22
- 20. MATCHLINE - 15022.01/23
- 21. MATCHLINE - 15022.01/24
- 22. MATCHLINE - 15022.01/25
- 23. MATCHLINE - 15022.01/26
- 24. MATCHLINE - 15022.01/27
- 25. MATCHLINE - 15022.01/28
- 26. MATCHLINE - 15022.01/29
- 27. MATCHLINE - 15022.01/30
- 28. MATCHLINE - 15022.01/31
- 29. MATCHLINE - 15022.01/32
- 30. MATCHLINE - 15022.01/33
- 31. MATCHLINE - 15022.01/34
- 32. MATCHLINE - 15022.01/35
- 33. MATCHLINE - 15022.01/36
- 34. MATCHLINE - 15022.01/37
- 35. MATCHLINE - 15022.01/38
- 36. MATCHLINE - 15022.01/39
- 37. MATCHLINE - 15022.01/40
- 38. MATCHLINE - 15022.01/41
- 39. MATCHLINE - 15022.01/42
- 40. MATCHLINE - 15022.01/43
- 41. MATCHLINE - 15022.01/44
- 42. MATCHLINE - 15022.01/45
- 43. MATCHLINE - 15022.01/46
- 44. MATCHLINE - 15022.01/47
- 45. MATCHLINE - 15022.01/48
- 46. MATCHLINE - 15022.01/49
- 47. MATCHLINE - 15022.01/50
- 48. MATCHLINE - 15022.01/51
- 49. MATCHLINE - 15022.01/52
- 50. MATCHLINE - 15022.01/53
- 51. MATCHLINE - 15022.01/54
- 52. MATCHLINE - 15022.01/55
- 53. MATCHLINE - 15022.01/56
- 54. MATCHLINE - 15022.01/57
- 55. MATCHLINE - 15022.01/58
- 56. MATCHLINE - 15022.01/59
- 57. MATCHLINE - 15022.01/60
- 58. MATCHLINE - 15022.01/61
- 59. MATCHLINE - 15022.01/62
- 60. MATCHLINE - 15022.01/63
- 61. MATCHLINE - 15022.01/64
- 62. MATCHLINE - 15022.01/65
- 63. MATCHLINE - 15022.01/66
- 64. MATCHLINE - 15022.01/67
- 65. MATCHLINE - 15022.01/68
- 66. MATCHLINE - 15022.01/69
- 67. MATCHLINE - 15022.01/70
- 68. MATCHLINE - 15022.01/71
- 69. MATCHLINE - 15022.01/72
- 70. MATCHLINE - 15022.01/73
- 71. MATCHLINE - 15022.01/74
- 72. MATCHLINE - 15022.01/75
- 73. MATCHLINE - 15022.01/76
- 74. MATCHLINE - 15022.01/77
- 75. MATCHLINE - 15022.01/78
- 76. MATCHLINE - 15022.01/79
- 77. MATCHLINE - 15022.01/80
- 78. MATCHLINE - 15022.01/81
- 79. MATCHLINE - 15022.01/82
- 80. MATCHLINE - 15022.01/83
- 81. MATCHLINE - 15022.01/84
- 82. MATCHLINE - 15022.01/85
- 83. MATCHLINE - 15022.01/86
- 84. MATCHLINE - 15022.01/87
- 85. MATCHLINE - 15022.01/88
- 86. MATCHLINE - 15022.01/89
- 87. MATCHLINE - 15022.01/90
- 88. MATCHLINE - 15022.01/91
- 89. MATCHLINE - 15022.01/92
- 90. MATCHLINE - 15022.01/93
- 91. MATCHLINE - 15022.01/94
- 92. MATCHLINE - 15022.01/95
- 93. MATCHLINE - 15022.01/96
- 94. MATCHLINE - 15022.01/97
- 95. MATCHLINE - 15022.01/98
- 96. MATCHLINE - 15022.01/99
- 97. MATCHLINE - 15022.01/100



GENERAL NOTES

1. ALL FOUNDATION WORK SHALL BE IN ACCORDANCE WITH THE LATEST EDITIONS OF THE INTERNATIONAL BUILDING CODES AND THE LATEST EDITIONS OF THE ACI 318 AND ACI 308 CODES.
2. ALL FOUNDATION WORK SHALL BE IN ACCORDANCE WITH THE LATEST EDITIONS OF THE ACI 318 AND ACI 308 CODES.
3. ALL FOUNDATION WORK SHALL BE IN ACCORDANCE WITH THE LATEST EDITIONS OF THE ACI 318 AND ACI 308 CODES.
4. ALL FOUNDATION WORK SHALL BE IN ACCORDANCE WITH THE LATEST EDITIONS OF THE ACI 318 AND ACI 308 CODES.
5. ALL FOUNDATION WORK SHALL BE IN ACCORDANCE WITH THE LATEST EDITIONS OF THE ACI 318 AND ACI 308 CODES.
6. ALL FOUNDATION WORK SHALL BE IN ACCORDANCE WITH THE LATEST EDITIONS OF THE ACI 318 AND ACI 308 CODES.
7. ALL FOUNDATION WORK SHALL BE IN ACCORDANCE WITH THE LATEST EDITIONS OF THE ACI 318 AND ACI 308 CODES.
8. ALL FOUNDATION WORK SHALL BE IN ACCORDANCE WITH THE LATEST EDITIONS OF THE ACI 318 AND ACI 308 CODES.
9. ALL FOUNDATION WORK SHALL BE IN ACCORDANCE WITH THE LATEST EDITIONS OF THE ACI 318 AND ACI 308 CODES.
10. ALL FOUNDATION WORK SHALL BE IN ACCORDANCE WITH THE LATEST EDITIONS OF THE ACI 318 AND ACI 308 CODES.
11. ALL FOUNDATION WORK SHALL BE IN ACCORDANCE WITH THE LATEST EDITIONS OF THE ACI 318 AND ACI 308 CODES.
12. ALL FOUNDATION WORK SHALL BE IN ACCORDANCE WITH THE LATEST EDITIONS OF THE ACI 318 AND ACI 308 CODES.
13. ALL FOUNDATION WORK SHALL BE IN ACCORDANCE WITH THE LATEST EDITIONS OF THE ACI 318 AND ACI 308 CODES.
14. ALL FOUNDATION WORK SHALL BE IN ACCORDANCE WITH THE LATEST EDITIONS OF THE ACI 318 AND ACI 308 CODES.
15. ALL FOUNDATION WORK SHALL BE IN ACCORDANCE WITH THE LATEST EDITIONS OF THE ACI 318 AND ACI 308 CODES.
16. ALL FOUNDATION WORK SHALL BE IN ACCORDANCE WITH THE LATEST EDITIONS OF THE ACI 318 AND ACI 308 CODES.
17. ALL FOUNDATION WORK SHALL BE IN ACCORDANCE WITH THE LATEST EDITIONS OF THE ACI 318 AND ACI 308 CODES.
18. ALL FOUNDATION WORK SHALL BE IN ACCORDANCE WITH THE LATEST EDITIONS OF THE ACI 318 AND ACI 308 CODES.
19. ALL FOUNDATION WORK SHALL BE IN ACCORDANCE WITH THE LATEST EDITIONS OF THE ACI 318 AND ACI 308 CODES.
20. ALL FOUNDATION WORK SHALL BE IN ACCORDANCE WITH THE LATEST EDITIONS OF THE ACI 318 AND ACI 308 CODES.

KEY PLAN



FOUNDATION PLAN - LEVEL 1&2 - ZONE 5

FOUNDATION PLAN - LEVEL 1&2 - ZONE 5

S02.01.05

