



**SITE WORK
DAILY FIELD REPORT**

PROJECT: Terminal Enhancement at the Portland International Jetport
DATE: 06/21/2010
PROJECT LOCATION: Portland, Maine PROJECT NO.: 557-14
CLIENT: City of Portland WEATHER: Sun
CONTRACTOR: Turner Construction Co.
PREVIOUS DATE ON SITE: 06/19/2010

Time on-site at 10.5 hrs, 10 mi travel, Tolls: \$0.00
Nuc. Densometer – 1 day (L 500)

AREA 'A'

Upper lot: No work observed.

AREA 'B'

Gorham Sand & Gravel continued installing and backfilling 12" water main and drain lines. 21 IPDs taken on backfill materials.

AREA 'C'

No work observed.

MJK

Michael Kramlich

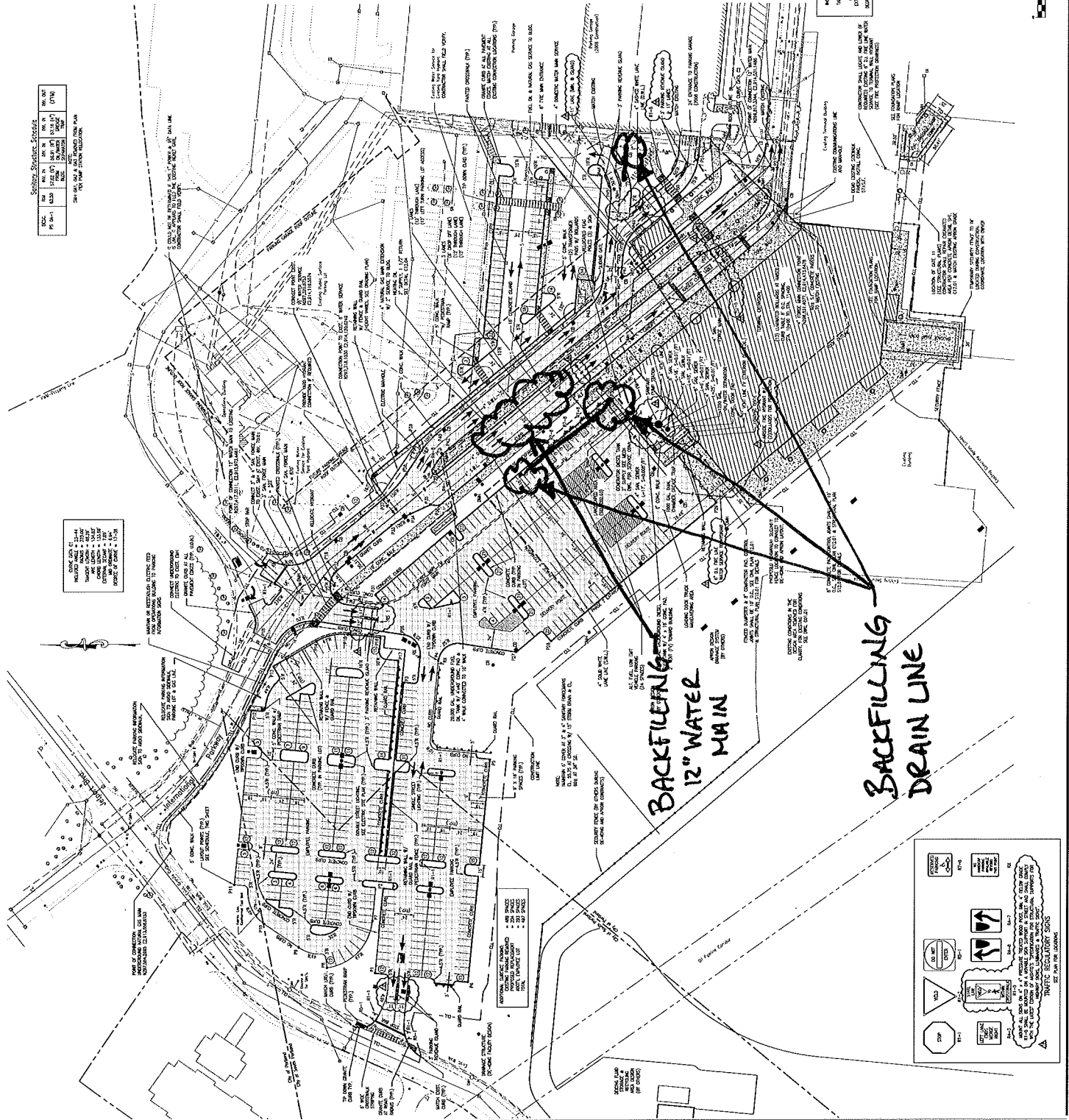
Prepared By

Matthew Grady

Reviewed By

SHEET NOTES

Symbol	Meaning
1	1" CONC. CURB
2	2" CONC. CURB
3	3" CONC. CURB
4	4" CONC. CURB
5	5" CONC. CURB
6	6" CONC. CURB
7	7" CONC. CURB
8	8" CONC. CURB
9	9" CONC. CURB
10	10" CONC. CURB
11	11" CONC. CURB
12	12" CONC. CURB
13	13" CONC. CURB
14	14" CONC. CURB
15	15" CONC. CURB
16	16" CONC. CURB
17	17" CONC. CURB
18	18" CONC. CURB
19	19" CONC. CURB
20	20" CONC. CURB
21	21" CONC. CURB
22	22" CONC. CURB
23	23" CONC. CURB
24	24" CONC. CURB
25	25" CONC. CURB
26	26" CONC. CURB
27	27" CONC. CURB
28	28" CONC. CURB
29	29" CONC. CURB
30	30" CONC. CURB
31	31" CONC. CURB
32	32" CONC. CURB
33	33" CONC. CURB
34	34" CONC. CURB
35	35" CONC. CURB
36	36" CONC. CURB
37	37" CONC. CURB
38	38" CONC. CURB
39	39" CONC. CURB
40	40" CONC. CURB
41	41" CONC. CURB
42	42" CONC. CURB
43	43" CONC. CURB
44	44" CONC. CURB
45	45" CONC. CURB
46	46" CONC. CURB
47	47" CONC. CURB
48	48" CONC. CURB
49	49" CONC. CURB
50	50" CONC. CURB
51	51" CONC. CURB
52	52" CONC. CURB
53	53" CONC. CURB
54	54" CONC. CURB
55	55" CONC. CURB
56	56" CONC. CURB
57	57" CONC. CURB
58	58" CONC. CURB
59	59" CONC. CURB
60	60" CONC. CURB
61	61" CONC. CURB
62	62" CONC. CURB
63	63" CONC. CURB
64	64" CONC. CURB
65	65" CONC. CURB
66	66" CONC. CURB
67	67" CONC. CURB
68	68" CONC. CURB
69	69" CONC. CURB
70	70" CONC. CURB
71	71" CONC. CURB
72	72" CONC. CURB
73	73" CONC. CURB
74	74" CONC. CURB
75	75" CONC. CURB
76	76" CONC. CURB
77	77" CONC. CURB
78	78" CONC. CURB
79	79" CONC. CURB
80	80" CONC. CURB
81	81" CONC. CURB
82	82" CONC. CURB
83	83" CONC. CURB
84	84" CONC. CURB
85	85" CONC. CURB
86	86" CONC. CURB
87	87" CONC. CURB
88	88" CONC. CURB
89	89" CONC. CURB
90	90" CONC. CURB
91	91" CONC. CURB
92	92" CONC. CURB
93	93" CONC. CURB
94	94" CONC. CURB
95	95" CONC. CURB
96	96" CONC. CURB
97	97" CONC. CURB
98	98" CONC. CURB
99	99" CONC. CURB
100	100" CONC. CURB



Portland International
Jetport
1003 Westbrook Street
Portland, Maine 04102

Gensler
MEEST ASSOCIATES, INC.
MEEST ASSOCIATES, INC.
2000 Spring Hill
Portland, ME 04106
Phone: 207.771.8287
Fax: 207.771.8288

PORTLAND INT'L JETPORT
TERMINAL EXPANSION
557-14
6-21-2010
MSE

GENERAL NOTES

1. ALL CHANGE ORDERS MUST BE APPROVED BY THE ARCHITECT AND THE ENGINEER BEFORE CONSTRUCTION DOCUMENTS ARE ISSUED.
2. ALL CONSTRUCTION SHALL BE IN ACCORDANCE WITH THE LATEST EDITIONS OF THE BUILDING CODES AND REGULATIONS.
3. ALL CONSTRUCTION SHALL BE IN ACCORDANCE WITH THE LATEST EDITIONS OF THE MECHANICAL, ELECTRICAL AND PLUMBING CODES AND REGULATIONS.
4. ALL CONSTRUCTION SHALL BE IN ACCORDANCE WITH THE LATEST EDITIONS OF THE STRUCTURAL CODES AND REGULATIONS.
5. ALL CONSTRUCTION SHALL BE IN ACCORDANCE WITH THE LATEST EDITIONS OF THE GEOTECHNICAL CODES AND REGULATIONS.
6. ALL CONSTRUCTION SHALL BE IN ACCORDANCE WITH THE LATEST EDITIONS OF THE ENVIRONMENTAL CODES AND REGULATIONS.
7. ALL CONSTRUCTION SHALL BE IN ACCORDANCE WITH THE LATEST EDITIONS OF THE SAFETY CODES AND REGULATIONS.

GRAPHIC SCALE
1" = 40'
1" = 100'

C02.01



SITE WORK DAILY FIELD REPORT

PROJECT: Terminal Enhancement at the Portland International Jetport

DATE: 06/22/2010

PROJECT LOCATION: Portland, Maine

PROJECT NO.: 557-14

CLIENT: City of Portland

WEATHER: Sun

CONTRACTOR: Turner Construction Co.

PREVIOUS DATE ON SITE: 06/21/2010

Time on-site at 11.25 hrs, 13 mi travel, Tolls: \$0.00
Nuc. Densometer – 1 day (L 500)

AREA 'A'

Upper lot: No work observed.

AREA 'B'

Gorham Sand & Gravel continued installing and backfilling 12" water main and drain lines. 40 IPDs taken on backfill materials.

AREA 'C'

Foundation wall backfill around LP-1 begins. IPDs taken on gravel material.

Concrete was placed at 12:30pm. See Rodney's daily for details.

mjk
Michael Kramlich
Prepared By

Matthew J. Grady
Matthew Grady
Reviewed By

R. W. Gillespie & Associates 86 industrial Park Rd., Suite 4, Saco, ME 04072- (207)286-8008

12D

SHEET NOTES

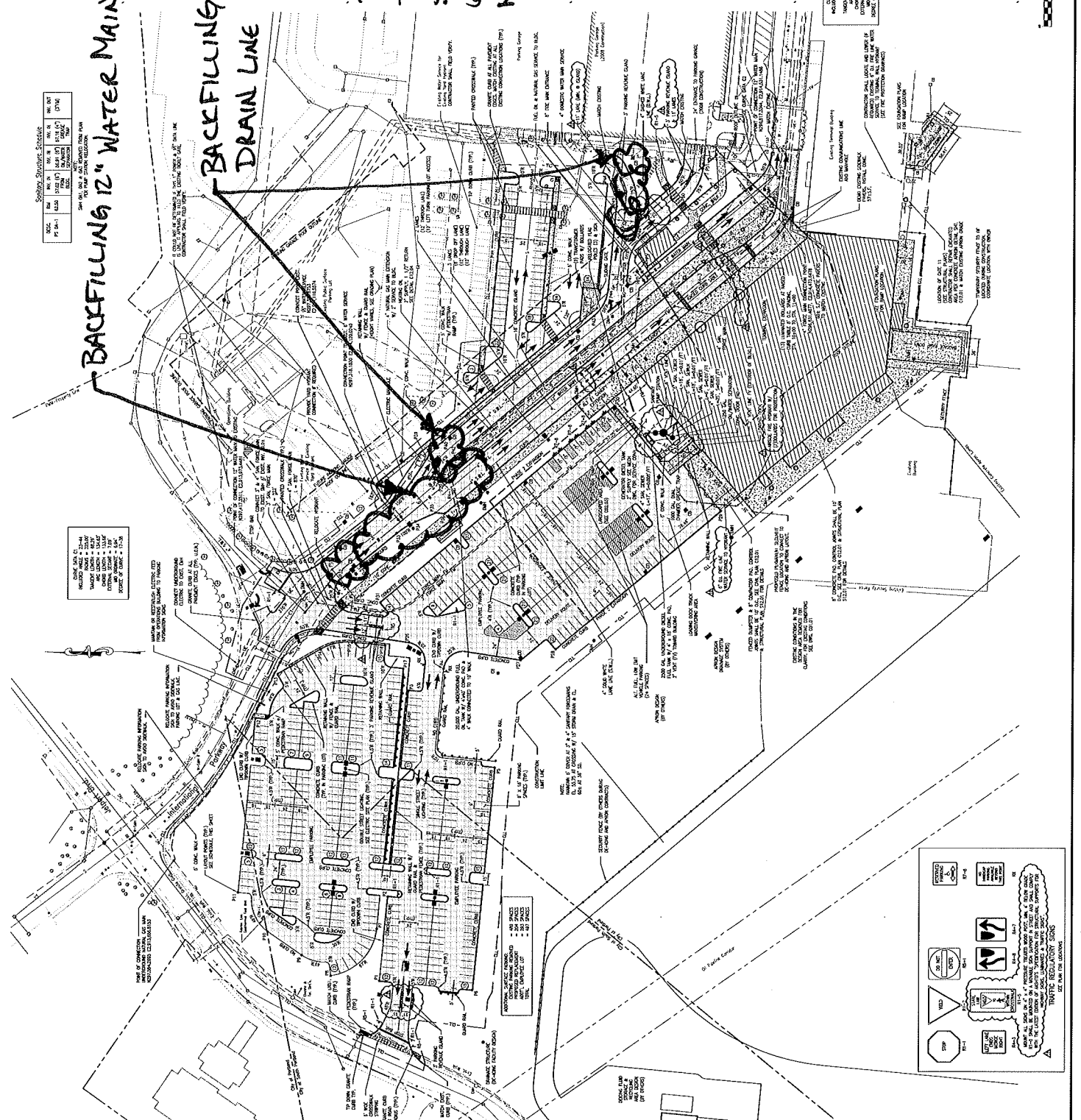
Local Description	Sheet	Date
1. 2000	1001	01/15/00
2. 2000	1002	01/15/00
3. 2000	1003	01/15/00
4. 2000	1004	01/15/00
5. 2000	1005	01/15/00
6. 2000	1006	01/15/00
7. 2000	1007	01/15/00
8. 2000	1008	01/15/00
9. 2000	1009	01/15/00
10. 2000	1010	01/15/00
11. 2000	1011	01/15/00
12. 2000	1012	01/15/00
13. 2000	1013	01/15/00
14. 2000	1014	01/15/00
15. 2000	1015	01/15/00
16. 2000	1016	01/15/00
17. 2000	1017	01/15/00
18. 2000	1018	01/15/00
19. 2000	1019	01/15/00
20. 2000	1020	01/15/00
21. 2000	1021	01/15/00
22. 2000	1022	01/15/00
23. 2000	1023	01/15/00
24. 2000	1024	01/15/00
25. 2000	1025	01/15/00
26. 2000	1026	01/15/00
27. 2000	1027	01/15/00
28. 2000	1028	01/15/00
29. 2000	1029	01/15/00
30. 2000	1030	01/15/00
31. 2000	1031	01/15/00
32. 2000	1032	01/15/00
33. 2000	1033	01/15/00
34. 2000	1034	01/15/00
35. 2000	1035	01/15/00
36. 2000	1036	01/15/00
37. 2000	1037	01/15/00
38. 2000	1038	01/15/00
39. 2000	1039	01/15/00
40. 2000	1040	01/15/00
41. 2000	1041	01/15/00
42. 2000	1042	01/15/00
43. 2000	1043	01/15/00
44. 2000	1044	01/15/00
45. 2000	1045	01/15/00
46. 2000	1046	01/15/00
47. 2000	1047	01/15/00
48. 2000	1048	01/15/00
49. 2000	1049	01/15/00
50. 2000	1050	01/15/00
51. 2000	1051	01/15/00
52. 2000	1052	01/15/00
53. 2000	1053	01/15/00
54. 2000	1054	01/15/00
55. 2000	1055	01/15/00
56. 2000	1056	01/15/00
57. 2000	1057	01/15/00
58. 2000	1058	01/15/00
59. 2000	1059	01/15/00
60. 2000	1060	01/15/00
61. 2000	1061	01/15/00
62. 2000	1062	01/15/00
63. 2000	1063	01/15/00
64. 2000	1064	01/15/00
65. 2000	1065	01/15/00
66. 2000	1066	01/15/00
67. 2000	1067	01/15/00
68. 2000	1068	01/15/00
69. 2000	1069	01/15/00
70. 2000	1070	01/15/00
71. 2000	1071	01/15/00
72. 2000	1072	01/15/00
73. 2000	1073	01/15/00
74. 2000	1074	01/15/00
75. 2000	1075	01/15/00
76. 2000	1076	01/15/00
77. 2000	1077	01/15/00
78. 2000	1078	01/15/00
79. 2000	1079	01/15/00
80. 2000	1080	01/15/00
81. 2000	1081	01/15/00
82. 2000	1082	01/15/00
83. 2000	1083	01/15/00
84. 2000	1084	01/15/00
85. 2000	1085	01/15/00
86. 2000	1086	01/15/00
87. 2000	1087	01/15/00
88. 2000	1088	01/15/00
89. 2000	1089	01/15/00
90. 2000	1090	01/15/00
91. 2000	1091	01/15/00
92. 2000	1092	01/15/00
93. 2000	1093	01/15/00
94. 2000	1094	01/15/00
95. 2000	1095	01/15/00
96. 2000	1096	01/15/00
97. 2000	1097	01/15/00
98. 2000	1098	01/15/00
99. 2000	1099	01/15/00
100. 2000	1100	01/15/00

BACKFILLING 12" WATER MAIN

BACKFILLING DRAIN LINE

PORTLAND INT'L AIRPORT
TERMINAL EXPANSION

SS7-14
6-22-2010
MSK



Portland International
Jetport
1001 Mechanic Street
Portland, Maine 04102

Gensler
MESS ASSOCIATES, INC.
ARCHITECTS ENGINEERS PLANNERS INTERIORS



No.	Date	Description
1	01/15/00	ISSUED FOR PERMIT
2	02/22/00	REVISED
3	03/01/00	REVISED
4	03/01/00	REVISED
5	03/01/00	REVISED
6	03/01/00	REVISED
7	03/01/00	REVISED
8	03/01/00	REVISED
9	03/01/00	REVISED
10	03/01/00	REVISED

GENERAL NOTES

- ALL DIMENSIONS UNLESS OTHERWISE SPECIFIED ARE IN FEET AND INCHES.
- CONSTRUCTION DOCUMENTS SHALL BE USED IN THE SEQUENCE LISTED HEREIN.
- CONTRACTOR SHALL BE RESPONSIBLE FOR OBTAINING ALL NECESSARY PERMITS AND APPROVALS FROM THE APPLICABLE AGENCIES.
- CONTRACTOR SHALL BE RESPONSIBLE FOR OBTAINING ALL NECESSARY PERMITS AND APPROVALS FROM THE APPLICABLE AGENCIES.
- CONTRACTOR SHALL BE RESPONSIBLE FOR OBTAINING ALL NECESSARY PERMITS AND APPROVALS FROM THE APPLICABLE AGENCIES.
- CONTRACTOR SHALL BE RESPONSIBLE FOR OBTAINING ALL NECESSARY PERMITS AND APPROVALS FROM THE APPLICABLE AGENCIES.
- CONTRACTOR SHALL BE RESPONSIBLE FOR OBTAINING ALL NECESSARY PERMITS AND APPROVALS FROM THE APPLICABLE AGENCIES.
- CONTRACTOR SHALL BE RESPONSIBLE FOR OBTAINING ALL NECESSARY PERMITS AND APPROVALS FROM THE APPLICABLE AGENCIES.
- CONTRACTOR SHALL BE RESPONSIBLE FOR OBTAINING ALL NECESSARY PERMITS AND APPROVALS FROM THE APPLICABLE AGENCIES.
- CONTRACTOR SHALL BE RESPONSIBLE FOR OBTAINING ALL NECESSARY PERMITS AND APPROVALS FROM THE APPLICABLE AGENCIES.

GRAPHIC SCALE
1" = 20' 0"

PROJECT INFORMATION
PROJECT NO. 02.01
DATE 06/16/2010

SCALE 1" = 20' 0"

C02.01
Sheet Number

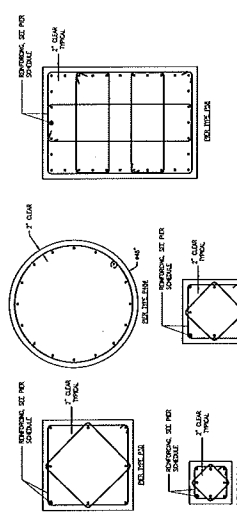
1 OF 2

IPD

PORTLAND INT'L JETPORT TERMINAL EXPANSION

SS7-14
6-22-2010
MJK

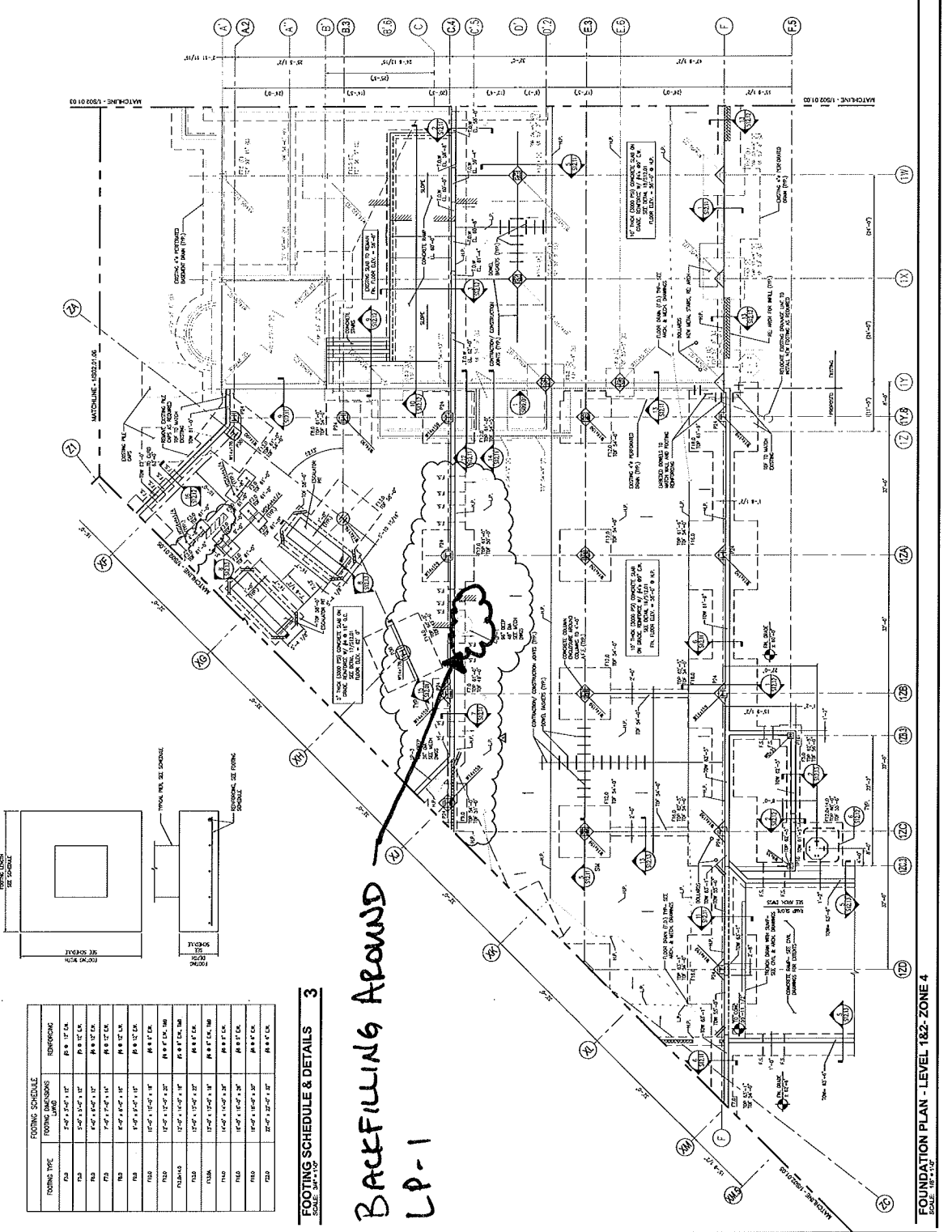
PIER SCHEDULE		VERTICAL DIMENSIONS	RECS
PIER TYPE	PIER DIMENSIONS	PIER DIMENSIONS	RECS
PIA	30'-0" x 15'-0"	PIA DIMENSIONS	PIA RECS
PIB	30'-0" x 15'-0"	PIB DIMENSIONS	PIB RECS
PIC	30'-0" x 15'-0"	PIC DIMENSIONS	PIC RECS
PID	30'-0" x 15'-0"	PID DIMENSIONS	PID RECS
PIE	30'-0" x 15'-0"	PIE DIMENSIONS	PIE RECS
PIF	30'-0" x 15'-0"	PIF DIMENSIONS	PIF RECS
PIG	30'-0" x 15'-0"	PIG DIMENSIONS	PIG RECS
PIH	30'-0" x 15'-0"	PIH DIMENSIONS	PIH RECS
PII	30'-0" x 15'-0"	PII DIMENSIONS	PII RECS
PIJ	30'-0" x 15'-0"	PIJ DIMENSIONS	PIJ RECS
PIK	30'-0" x 15'-0"	PIK DIMENSIONS	PIK RECS
PIA	30'-0" x 15'-0"	PIA DIMENSIONS	PIA RECS
PIB	30'-0" x 15'-0"	PIB DIMENSIONS	PIB RECS
PIC	30'-0" x 15'-0"	PIC DIMENSIONS	PIC RECS
PID	30'-0" x 15'-0"	PID DIMENSIONS	PID RECS
PIE	30'-0" x 15'-0"	PIE DIMENSIONS	PIE RECS
PIF	30'-0" x 15'-0"	PIF DIMENSIONS	PIF RECS
PIG	30'-0" x 15'-0"	PIG DIMENSIONS	PIG RECS
PIH	30'-0" x 15'-0"	PIH DIMENSIONS	PIH RECS
PII	30'-0" x 15'-0"	PII DIMENSIONS	PII RECS
PIJ	30'-0" x 15'-0"	PIJ DIMENSIONS	PIJ RECS
PIK	30'-0" x 15'-0"	PIK DIMENSIONS	PIK RECS



PIER SCHEDULE & DETAILS
SCALE: 3/4" = 1'-0"

FOOTING SCHEDULE		FOOTING DIMENSIONS	REINFORCEMENT
FOOTING TYPE	FOOTING DIMENSIONS	FOOTING DIMENSIONS	REINFORCEMENT
F01	30'-0" x 15'-0"	F01 DIMENSIONS	F01 REINFORCEMENT
F02	30'-0" x 15'-0"	F02 DIMENSIONS	F02 REINFORCEMENT
F03	30'-0" x 15'-0"	F03 DIMENSIONS	F03 REINFORCEMENT
F04	30'-0" x 15'-0"	F04 DIMENSIONS	F04 REINFORCEMENT
F05	30'-0" x 15'-0"	F05 DIMENSIONS	F05 REINFORCEMENT
F06	30'-0" x 15'-0"	F06 DIMENSIONS	F06 REINFORCEMENT
F07	30'-0" x 15'-0"	F07 DIMENSIONS	F07 REINFORCEMENT
F08	30'-0" x 15'-0"	F08 DIMENSIONS	F08 REINFORCEMENT
F09	30'-0" x 15'-0"	F09 DIMENSIONS	F09 REINFORCEMENT
F10	30'-0" x 15'-0"	F10 DIMENSIONS	F10 REINFORCEMENT
F11	30'-0" x 15'-0"	F11 DIMENSIONS	F11 REINFORCEMENT
F12	30'-0" x 15'-0"	F12 DIMENSIONS	F12 REINFORCEMENT
F13	30'-0" x 15'-0"	F13 DIMENSIONS	F13 REINFORCEMENT
F14	30'-0" x 15'-0"	F14 DIMENSIONS	F14 REINFORCEMENT
F15	30'-0" x 15'-0"	F15 DIMENSIONS	F15 REINFORCEMENT
F16	30'-0" x 15'-0"	F16 DIMENSIONS	F16 REINFORCEMENT
F17	30'-0" x 15'-0"	F17 DIMENSIONS	F17 REINFORCEMENT
F18	30'-0" x 15'-0"	F18 DIMENSIONS	F18 REINFORCEMENT
F19	30'-0" x 15'-0"	F19 DIMENSIONS	F19 REINFORCEMENT
F20	30'-0" x 15'-0"	F20 DIMENSIONS	F20 REINFORCEMENT

FOOTING SCHEDULE & DETAILS
SCALE: 3/4" = 1'-0"



BACKFILLING AROUND
LP-1

FOUNDATION PLAN - LEVEL 1&2 - ZONE 4
SCALE: 1/8" = 1'-0"

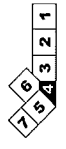
SHEET NOTES

1. ALL DIMENSIONS UNLESS OTHERWISE NOTED ARE IN FEET AND INCHES.
2. ALL DIMENSIONS UNLESS OTHERWISE NOTED ARE IN FEET AND INCHES.
3. ALL DIMENSIONS UNLESS OTHERWISE NOTED ARE IN FEET AND INCHES.
4. ALL DIMENSIONS UNLESS OTHERWISE NOTED ARE IN FEET AND INCHES.
5. ALL DIMENSIONS UNLESS OTHERWISE NOTED ARE IN FEET AND INCHES.
6. ALL DIMENSIONS UNLESS OTHERWISE NOTED ARE IN FEET AND INCHES.
7. ALL DIMENSIONS UNLESS OTHERWISE NOTED ARE IN FEET AND INCHES.
8. ALL DIMENSIONS UNLESS OTHERWISE NOTED ARE IN FEET AND INCHES.
9. ALL DIMENSIONS UNLESS OTHERWISE NOTED ARE IN FEET AND INCHES.
10. ALL DIMENSIONS UNLESS OTHERWISE NOTED ARE IN FEET AND INCHES.
11. ALL DIMENSIONS UNLESS OTHERWISE NOTED ARE IN FEET AND INCHES.
12. ALL DIMENSIONS UNLESS OTHERWISE NOTED ARE IN FEET AND INCHES.
13. ALL DIMENSIONS UNLESS OTHERWISE NOTED ARE IN FEET AND INCHES.
14. ALL DIMENSIONS UNLESS OTHERWISE NOTED ARE IN FEET AND INCHES.
15. ALL DIMENSIONS UNLESS OTHERWISE NOTED ARE IN FEET AND INCHES.
16. ALL DIMENSIONS UNLESS OTHERWISE NOTED ARE IN FEET AND INCHES.
17. ALL DIMENSIONS UNLESS OTHERWISE NOTED ARE IN FEET AND INCHES.
18. ALL DIMENSIONS UNLESS OTHERWISE NOTED ARE IN FEET AND INCHES.
19. ALL DIMENSIONS UNLESS OTHERWISE NOTED ARE IN FEET AND INCHES.
20. ALL DIMENSIONS UNLESS OTHERWISE NOTED ARE IN FEET AND INCHES.

GENERAL NOTES

1. ALL DIMENSIONS UNLESS OTHERWISE NOTED ARE IN FEET AND INCHES.
2. ALL DIMENSIONS UNLESS OTHERWISE NOTED ARE IN FEET AND INCHES.
3. ALL DIMENSIONS UNLESS OTHERWISE NOTED ARE IN FEET AND INCHES.
4. ALL DIMENSIONS UNLESS OTHERWISE NOTED ARE IN FEET AND INCHES.
5. ALL DIMENSIONS UNLESS OTHERWISE NOTED ARE IN FEET AND INCHES.
6. ALL DIMENSIONS UNLESS OTHERWISE NOTED ARE IN FEET AND INCHES.
7. ALL DIMENSIONS UNLESS OTHERWISE NOTED ARE IN FEET AND INCHES.
8. ALL DIMENSIONS UNLESS OTHERWISE NOTED ARE IN FEET AND INCHES.
9. ALL DIMENSIONS UNLESS OTHERWISE NOTED ARE IN FEET AND INCHES.
10. ALL DIMENSIONS UNLESS OTHERWISE NOTED ARE IN FEET AND INCHES.
11. ALL DIMENSIONS UNLESS OTHERWISE NOTED ARE IN FEET AND INCHES.
12. ALL DIMENSIONS UNLESS OTHERWISE NOTED ARE IN FEET AND INCHES.
13. ALL DIMENSIONS UNLESS OTHERWISE NOTED ARE IN FEET AND INCHES.
14. ALL DIMENSIONS UNLESS OTHERWISE NOTED ARE IN FEET AND INCHES.
15. ALL DIMENSIONS UNLESS OTHERWISE NOTED ARE IN FEET AND INCHES.
16. ALL DIMENSIONS UNLESS OTHERWISE NOTED ARE IN FEET AND INCHES.
17. ALL DIMENSIONS UNLESS OTHERWISE NOTED ARE IN FEET AND INCHES.
18. ALL DIMENSIONS UNLESS OTHERWISE NOTED ARE IN FEET AND INCHES.
19. ALL DIMENSIONS UNLESS OTHERWISE NOTED ARE IN FEET AND INCHES.
20. ALL DIMENSIONS UNLESS OTHERWISE NOTED ARE IN FEET AND INCHES.

KEY PLAN



Portland International
Jetport
1001 Hueston Street
Portland, Maine 04102

Gensler

MESE ASSOCIATES, INC.
10000 BROADWAY, SUITE 200
BOSTON, MASSACHUSETTS 02110

2008 Gensler, Inc.
10000 BROADWAY, SUITE 200
BOSTON, MASSACHUSETTS 02110



PROJECT NUMBER: 02.01.04
DATE: 06/22/10
DRAWN BY: [Name]
CHECKED BY: [Name]
SCALE: 1/8" = 1'-0"

02.01.04

2012

Daily Observation Report

Project: <u>Portland Jetport Terminal Expansion</u>		Time: _____ End Time _____	Mileage: _____ End _____
Project No.: <u>557-14</u>	Tolls: <u>\$2</u>	_____ Beg. Time _____	_____ Begin _____
Per Diem/Lodging: _____		✓ <u>6</u> Total Time	✓ <u>28</u> Total

Observations:

In-Place Densities Done _____ All IPDs meet Specifications Reported to _____
 Not all IPDs meet Specifications Reported to _____

Phone Calls:

I tested the concrete placed in the footings and walls marked on the concrete sheets. 12 cylinders were cast to cure in the field.

I brought back 4 cylinders cast by Mike on 6/18/10 to Lab.

R.R.C.

Reviewed By: MR

Signed: [Signature]

<input type="checkbox"/> HNU _____ day	<input checked="" type="checkbox"/> Concrete Equipment	Monitoring Well Supplies
<input type="checkbox"/> Survey Level _____ day	<input type="checkbox"/> Nuc Densometer _____ day	_____ Bags of Bentonite _____ Locks
<input type="checkbox"/> Rebar Meter _____ day	<input type="checkbox"/> Coring Machine _____ Dia.	_____ 5 ft. Screen 2" PVC _____ Caps
_____ Bailers (Disposable)	_____ Inches Cored	_____ 10 ft. Screen 2" PVC _____ Points
<input type="checkbox"/> Water Level Ind. _____ day	<input type="checkbox"/> Generator <input type="checkbox"/> Taylor Rental	_____ 5 ft. Riser 2" PVC _____ Screw Caps
<input type="checkbox"/> Drill Rig _____ day	<input type="checkbox"/> Peristaltic Pump (note tubing used)	_____ 10 ft. Riser 2" PVC
<input type="checkbox"/> Backhoe _____ day	<input type="checkbox"/> Other _____	_____ Other _____

Kathryn R.C. 557-14
6/22/10 W

8

Portland International
Jetport
1001 Westbrook Street
Portland, Maine 04102

Gensler

psst
ASSOCIATES, INC.
REGISTERED ARCHITECTS - SURVEYORS - CONSTRUCTION MANAGERS

2011 S. OAK ST.
SUITE 100
PORTLAND, ME 04106
PHONE: 207.733.2200
FAX: 207.733.2202



PROJECT NUMBER: 1001 JETPORT
DATE: 07/21/09
DESIGNED BY: J. W. WILSON
CHECKED BY: J. W. WILSON
DATE: 07/22/09
CONSTRUCTION DOCUMENTS
NO. 04
NO. 05
NO. 06
NO. 07
NO. 08
NO. 09
NO. 10
NO. 11
NO. 12
NO. 13
NO. 14
NO. 15
NO. 16
NO. 17
NO. 18
NO. 19
NO. 20
NO. 21
NO. 22
NO. 23
NO. 24
NO. 25
NO. 26
NO. 27
NO. 28
NO. 29
NO. 30
NO. 31
NO. 32
NO. 33
NO. 34
NO. 35
NO. 36
NO. 37
NO. 38
NO. 39
NO. 40
NO. 41
NO. 42
NO. 43
NO. 44
NO. 45
NO. 46
NO. 47
NO. 48
NO. 49
NO. 50
NO. 51
NO. 52
NO. 53
NO. 54
NO. 55
NO. 56
NO. 57
NO. 58
NO. 59
NO. 60
NO. 61
NO. 62
NO. 63
NO. 64
NO. 65
NO. 66
NO. 67
NO. 68
NO. 69
NO. 70
NO. 71
NO. 72
NO. 73
NO. 74
NO. 75
NO. 76
NO. 77
NO. 78
NO. 79
NO. 80
NO. 81
NO. 82
NO. 83
NO. 84
NO. 85
NO. 86
NO. 87
NO. 88
NO. 89
NO. 90
NO. 91
NO. 92
NO. 93
NO. 94
NO. 95
NO. 96
NO. 97
NO. 98
NO. 99
NO. 100

FOUNDATION PLAN - LEVEL 182 - ZONE 5
SCALE: 1/8" = 1'-0"
S02.01.05

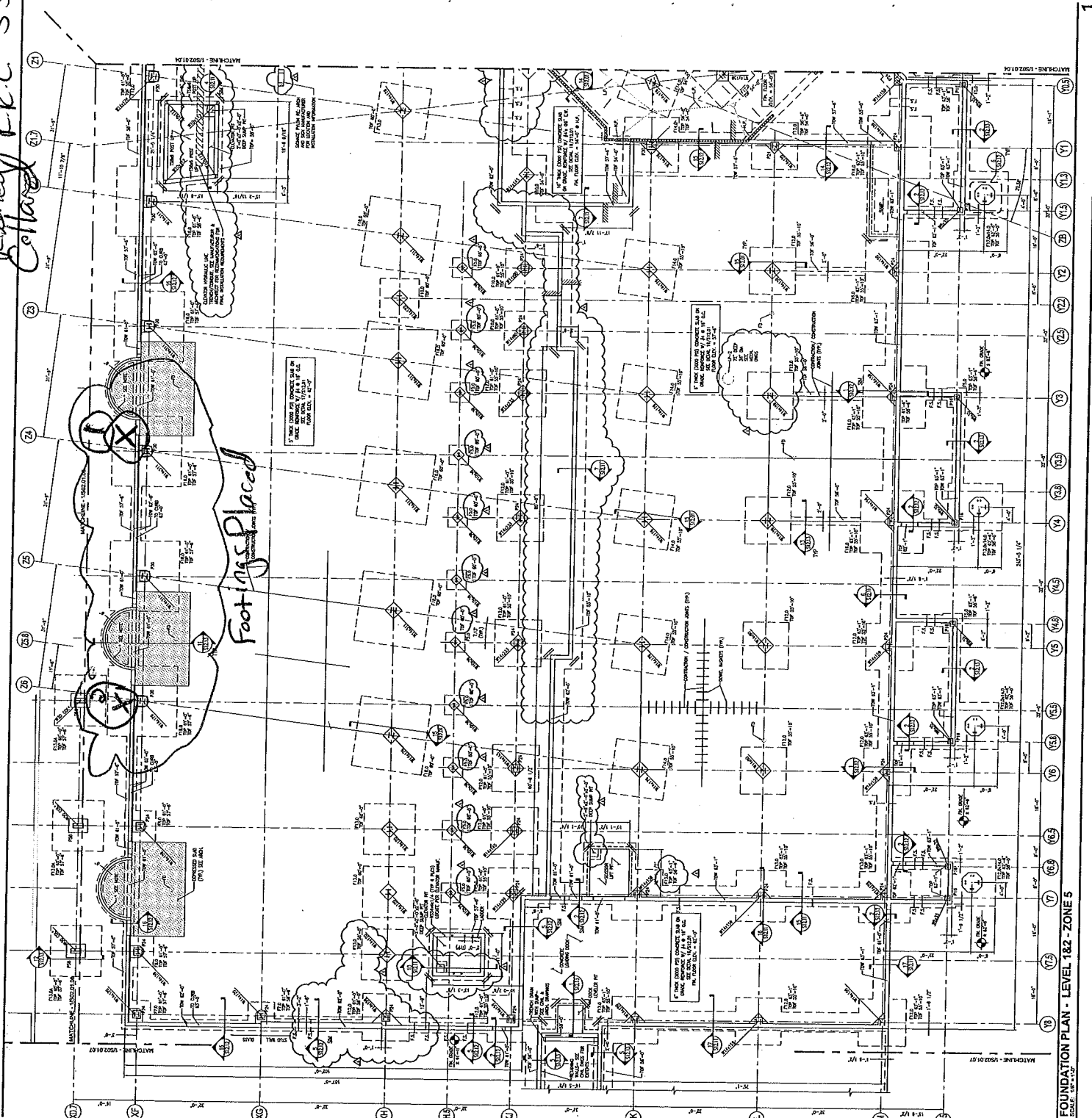
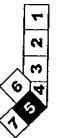
SHEET NOTES

1. FOUNDATION SHALL BE SET IN ACCORDANCE WITH THE CONSTRUCTION DOCUMENTS AND THE STATE OF MAINE REGULATIONS.
2. THE FOUNDATION SHALL BE SET IN ACCORDANCE WITH THE CONSTRUCTION DOCUMENTS AND THE STATE OF MAINE REGULATIONS.
3. THE FOUNDATION SHALL BE SET IN ACCORDANCE WITH THE CONSTRUCTION DOCUMENTS AND THE STATE OF MAINE REGULATIONS.
4. THE FOUNDATION SHALL BE SET IN ACCORDANCE WITH THE CONSTRUCTION DOCUMENTS AND THE STATE OF MAINE REGULATIONS.
5. THE FOUNDATION SHALL BE SET IN ACCORDANCE WITH THE CONSTRUCTION DOCUMENTS AND THE STATE OF MAINE REGULATIONS.
6. THE FOUNDATION SHALL BE SET IN ACCORDANCE WITH THE CONSTRUCTION DOCUMENTS AND THE STATE OF MAINE REGULATIONS.
7. THE FOUNDATION SHALL BE SET IN ACCORDANCE WITH THE CONSTRUCTION DOCUMENTS AND THE STATE OF MAINE REGULATIONS.
8. THE FOUNDATION SHALL BE SET IN ACCORDANCE WITH THE CONSTRUCTION DOCUMENTS AND THE STATE OF MAINE REGULATIONS.
9. THE FOUNDATION SHALL BE SET IN ACCORDANCE WITH THE CONSTRUCTION DOCUMENTS AND THE STATE OF MAINE REGULATIONS.
10. THE FOUNDATION SHALL BE SET IN ACCORDANCE WITH THE CONSTRUCTION DOCUMENTS AND THE STATE OF MAINE REGULATIONS.

GENERAL NOTES

1. ALL FOUNDATION SHALL BE SET IN ACCORDANCE WITH THE CONSTRUCTION DOCUMENTS AND THE STATE OF MAINE REGULATIONS.
2. THE FOUNDATION SHALL BE SET IN ACCORDANCE WITH THE CONSTRUCTION DOCUMENTS AND THE STATE OF MAINE REGULATIONS.
3. THE FOUNDATION SHALL BE SET IN ACCORDANCE WITH THE CONSTRUCTION DOCUMENTS AND THE STATE OF MAINE REGULATIONS.
4. THE FOUNDATION SHALL BE SET IN ACCORDANCE WITH THE CONSTRUCTION DOCUMENTS AND THE STATE OF MAINE REGULATIONS.
5. THE FOUNDATION SHALL BE SET IN ACCORDANCE WITH THE CONSTRUCTION DOCUMENTS AND THE STATE OF MAINE REGULATIONS.
6. THE FOUNDATION SHALL BE SET IN ACCORDANCE WITH THE CONSTRUCTION DOCUMENTS AND THE STATE OF MAINE REGULATIONS.
7. THE FOUNDATION SHALL BE SET IN ACCORDANCE WITH THE CONSTRUCTION DOCUMENTS AND THE STATE OF MAINE REGULATIONS.
8. THE FOUNDATION SHALL BE SET IN ACCORDANCE WITH THE CONSTRUCTION DOCUMENTS AND THE STATE OF MAINE REGULATIONS.
9. THE FOUNDATION SHALL BE SET IN ACCORDANCE WITH THE CONSTRUCTION DOCUMENTS AND THE STATE OF MAINE REGULATIONS.
10. THE FOUNDATION SHALL BE SET IN ACCORDANCE WITH THE CONSTRUCTION DOCUMENTS AND THE STATE OF MAINE REGULATIONS.

KEY PLAN



FOUNDATION PLAN - LEVEL 182 - ZONE 5
SCALE: 1/8" = 1'-0"



**SITE WORK
DAILY FIELD REPORT**

PROJECT: Terminal Enhancement at the Portland International Jetport
DATE: 06/23/2010
PROJECT LOCATION: Portland, Maine PROJECT NO.: 557-14
CLIENT: City of Portland WEATHER: Sun
CONTRACTOR: Turner Construction Co.
PREVIOUS DATE ON SITE: 06/22/2010

Time on-site at 10 hrs, 12 mi travel, Tolls: \$0.00
Nuc. Densometer – 1/2 day (L 500)

AREA 'A'

Upper lot: No work observed.

AREA 'B'

Gorham Sand & Gravel continued installing and backfilling 12" water main. 4 IPDs taken on backfill materials.

AREA 'C'

Foundation wall backfill continues. 2 IPDs taken on gravel material. See Rodney's daily report for details on his testing in this area.

Frequency of density testing was discussed with Shaun Winner of Turner Construction, Lacey Fogg of AMEC and MTG. Project specs do not provide details regarding frequency of testing required. 1 test per 100 linear feet put forward as a reasonable number acceptable to all parties.

Gradation results for sand sampled for retest discussed with Mark Nicklin of GSG and MTG. Based on differences between the new and original gradation, Mark requested that a proctor be run. Shaun Winner of Turner Construction to prepare submittal paperwork to accompany report.

MSK
Michael Kramlich
Prepared By

Matthew J. Grady
Matthew Grady
Reviewed By

IPD

SHEET NOTES

Stationing Schedule

STA.	PC	PT	PI	CV	STATIONING
100	100+00	100+00	100+00	100+00	100+00
101	101+00	101+00	101+00	101+00	101+00
102	102+00	102+00	102+00	102+00	102+00
103	103+00	103+00	103+00	103+00	103+00
104	104+00	104+00	104+00	104+00	104+00
105	105+00	105+00	105+00	105+00	105+00
106	106+00	106+00	106+00	106+00	106+00
107	107+00	107+00	107+00	107+00	107+00
108	108+00	108+00	108+00	108+00	108+00
109	109+00	109+00	109+00	109+00	109+00
110	110+00	110+00	110+00	110+00	110+00
111	111+00	111+00	111+00	111+00	111+00
112	112+00	112+00	112+00	112+00	112+00
113	113+00	113+00	113+00	113+00	113+00
114	114+00	114+00	114+00	114+00	114+00
115	115+00	115+00	115+00	115+00	115+00
116	116+00	116+00	116+00	116+00	116+00
117	117+00	117+00	117+00	117+00	117+00
118	118+00	118+00	118+00	118+00	118+00
119	119+00	119+00	119+00	119+00	119+00
120	120+00	120+00	120+00	120+00	120+00
121	121+00	121+00	121+00	121+00	121+00
122	122+00	122+00	122+00	122+00	122+00
123	123+00	123+00	123+00	123+00	123+00
124	124+00	124+00	124+00	124+00	124+00
125	125+00	125+00	125+00	125+00	125+00
126	126+00	126+00	126+00	126+00	126+00
127	127+00	127+00	127+00	127+00	127+00
128	128+00	128+00	128+00	128+00	128+00
129	129+00	129+00	129+00	129+00	129+00
130	130+00	130+00	130+00	130+00	130+00
131	131+00	131+00	131+00	131+00	131+00
132	132+00	132+00	132+00	132+00	132+00
133	133+00	133+00	133+00	133+00	133+00
134	134+00	134+00	134+00	134+00	134+00
135	135+00	135+00	135+00	135+00	135+00
136	136+00	136+00	136+00	136+00	136+00
137	137+00	137+00	137+00	137+00	137+00
138	138+00	138+00	138+00	138+00	138+00
139	139+00	139+00	139+00	139+00	139+00
140	140+00	140+00	140+00	140+00	140+00
141	141+00	141+00	141+00	141+00	141+00
142	142+00	142+00	142+00	142+00	142+00
143	143+00	143+00	143+00	143+00	143+00
144	144+00	144+00	144+00	144+00	144+00
145	145+00	145+00	145+00	145+00	145+00
146	146+00	146+00	146+00	146+00	146+00
147	147+00	147+00	147+00	147+00	147+00
148	148+00	148+00	148+00	148+00	148+00
149	149+00	149+00	149+00	149+00	149+00
150	150+00	150+00	150+00	150+00	150+00

12" WATER MAIN
BACKFLOW PREVENTER

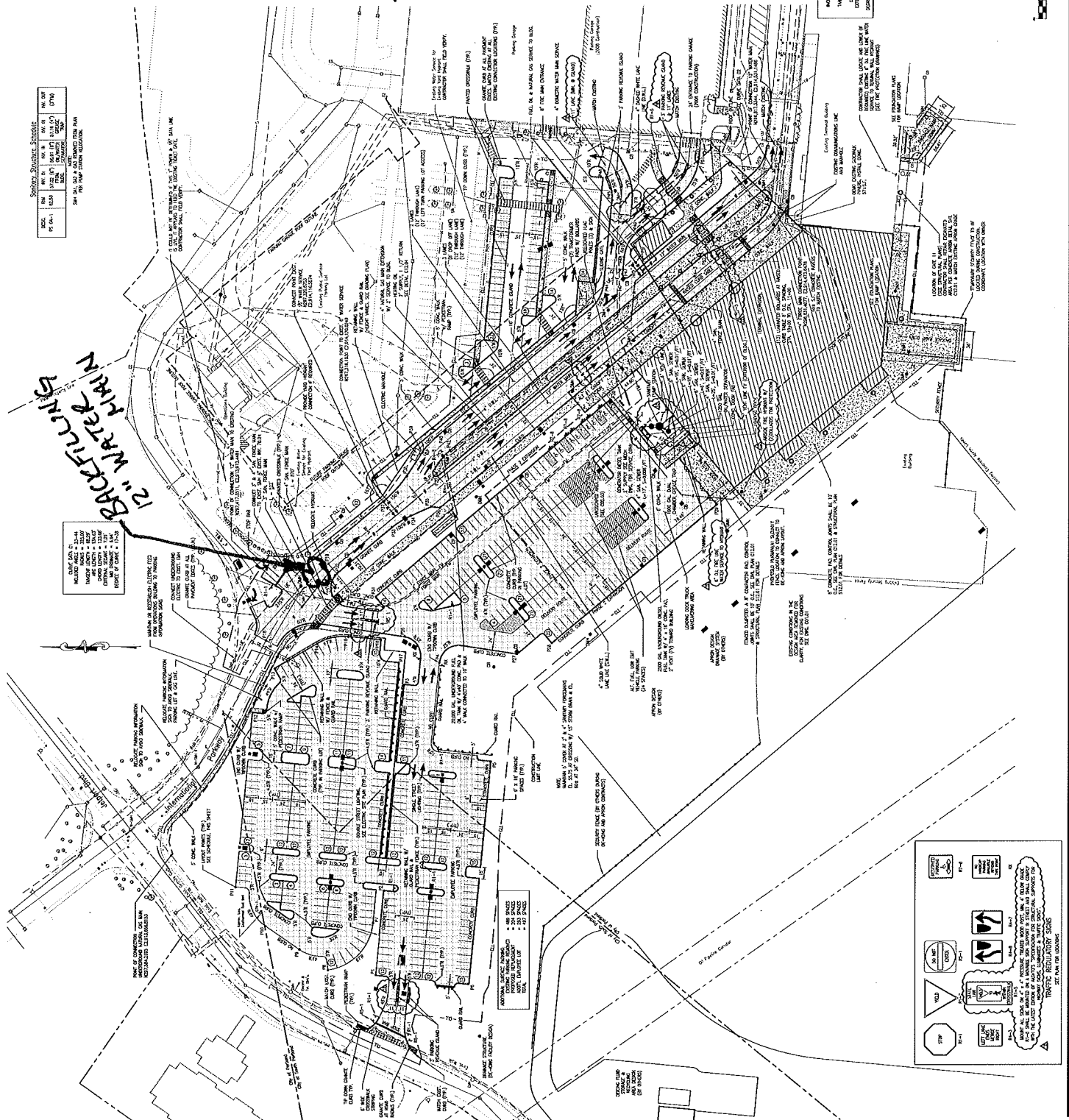
PORTLAND INT'L AIRPORT
TERMINAL EXPANSION
557-14
6-23-2010
MSK

Portland International
Jetport
1001 Westbrook Street
Portland, Maine 04102

Gensler
WEST ASSOCIATES INC.
GENERAL CONTRACTORS

Level Schedule

Level	Symbol	Code
100	100	100
101	101	101
102	102	102
103	103	103
104	104	104
105	105	105
106	106	106
107	107	107
108	108	108
109	109	109
110	110	110
111	111	111
112	112	112
113	113	113
114	114	114
115	115	115
116	116	116
117	117	117
118	118	118
119	119	119
120	120	120
121	121	121
122	122	122
123	123	123
124	124	124
125	125	125
126	126	126
127	127	127
128	128	128
129	129	129
130	130	130
131	131	131
132	132	132
133	133	133
134	134	134
135	135	135
136	136	136
137	137	137
138	138	138
139	139	139
140	140	140
141	141	141
142	142	142
143	143	143
144	144	144
145	145	145
146	146	146
147	147	147
148	148	148
149	149	149
150	150	150



- GENERAL NOTES**
1. ALL DIMENSIONS UNLESS OTHERWISE NOTED SHALL BE IN FEET.
 2. THE CONSTRUCTION WORKMANSHIP SHALL BE IN ACCORDANCE WITH THE STANDARD SPECIFICATIONS FOR HIGHWAY CONSTRUCTION, LATEST EDITION, AS APPLICABLE.
 3. MATERIALS SHALL BE USED AS SHOWN IN THE DRAWINGS UNLESS OTHERWISE NOTED.
 4. ALL MATERIALS SHALL BE SUBJECT TO INSPECTION AND APPROVAL BY THE ENGINEER.
 5. THE CONTRACTOR SHALL BE RESPONSIBLE FOR OBTAINING ALL NECESSARY PERMITS AND APPROVALS FROM THE APPROPRIATE AGENCIES.
 6. THE CONTRACTOR SHALL BE RESPONSIBLE FOR PROTECTING ALL EXISTING UTILITIES AND STRUCTURES TO REMAIN.
 7. THE CONTRACTOR SHALL BE RESPONSIBLE FOR MAINTAINING ACCESS TO ALL ADJACENT PROPERTIES AND PUBLIC AREAS.

GRAPHIC SCALE
1" = 20'

PORTLAND INTERNATIONAL AIRPORT
TERMINAL EXPANSION
557-14
6-23-2010
MSK

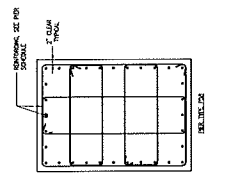
C02.01

1042

IPD

PORTLAND INT'L SETPORT TERMINAL EXPANSION 557-14 6-23-2010 MSK

PIER TYPE	PIER DIMENSIONS	PIER SCHEDULE	TEE
P1A	30' x 18'	SP 18 VERTICAL	P1 TO P1 F.T.C.
P1B	30' x 18'	SP 18 VERTICAL	P1 TO P1 F.T.C.
P1C	30' x 18'	SP 18 VERTICAL	P1 TO P1 F.T.C.
P1D	30' x 18'	SP 18 VERTICAL	P1 TO P1 F.T.C.
P1E	30' x 18'	SP 18 VERTICAL	P1 TO P1 F.T.C.
P1F	30' x 18'	SP 18 VERTICAL	P1 TO P1 F.T.C.
P1G	30' x 18'	SP 18 VERTICAL	P1 TO P1 F.T.C.
P1H	30' x 18'	SP 18 VERTICAL	P1 TO P1 F.T.C.
P1I	30' x 18'	SP 18 VERTICAL	P1 TO P1 F.T.C.
P1J	30' x 18'	SP 18 VERTICAL	P1 TO P1 F.T.C.
P1K	30' x 18'	SP 18 VERTICAL	P1 TO P1 F.T.C.
P1L	30' x 18'	SP 18 VERTICAL	P1 TO P1 F.T.C.
P1M	30' x 18'	SP 18 VERTICAL	P1 TO P1 F.T.C.
P1N	30' x 18'	SP 18 VERTICAL	P1 TO P1 F.T.C.
P1O	30' x 18'	SP 18 VERTICAL	P1 TO P1 F.T.C.
P1P	30' x 18'	SP 18 VERTICAL	P1 TO P1 F.T.C.
P1Q	30' x 18'	SP 18 VERTICAL	P1 TO P1 F.T.C.
P1R	30' x 18'	SP 18 VERTICAL	P1 TO P1 F.T.C.
P1S	30' x 18'	SP 18 VERTICAL	P1 TO P1 F.T.C.
P1T	30' x 18'	SP 18 VERTICAL	P1 TO P1 F.T.C.
P1U	30' x 18'	SP 18 VERTICAL	P1 TO P1 F.T.C.
P1V	30' x 18'	SP 18 VERTICAL	P1 TO P1 F.T.C.
P1W	30' x 18'	SP 18 VERTICAL	P1 TO P1 F.T.C.
P1X	30' x 18'	SP 18 VERTICAL	P1 TO P1 F.T.C.
P1Y	30' x 18'	SP 18 VERTICAL	P1 TO P1 F.T.C.
P1Z	30' x 18'	SP 18 VERTICAL	P1 TO P1 F.T.C.

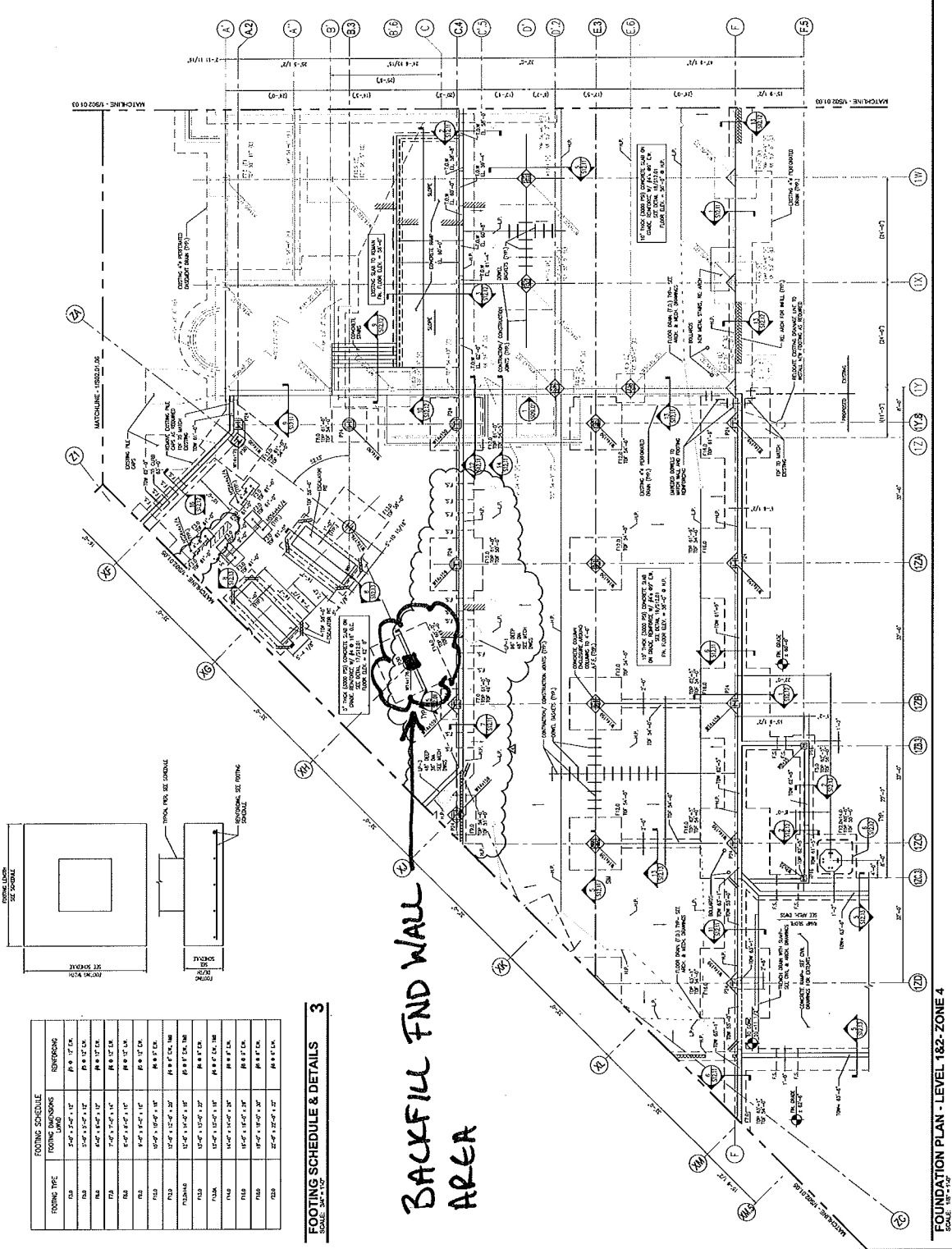


PIER SCHEDULE & DETAILS
SCALE: 1/8" = 1'-0"

FOOTING TYPE	FOOTING DIMENSIONS (L x W)	FOOTING SCHEDULE	REINFORCING
F1A	30' x 18' x 1'-0"	SP 18 VERTICAL	P1 TO P1 F.T.C.
F1B	30' x 18' x 1'-0"	SP 18 VERTICAL	P1 TO P1 F.T.C.
F1C	30' x 18' x 1'-0"	SP 18 VERTICAL	P1 TO P1 F.T.C.
F1D	30' x 18' x 1'-0"	SP 18 VERTICAL	P1 TO P1 F.T.C.
F1E	30' x 18' x 1'-0"	SP 18 VERTICAL	P1 TO P1 F.T.C.
F1F	30' x 18' x 1'-0"	SP 18 VERTICAL	P1 TO P1 F.T.C.
F1G	30' x 18' x 1'-0"	SP 18 VERTICAL	P1 TO P1 F.T.C.
F1H	30' x 18' x 1'-0"	SP 18 VERTICAL	P1 TO P1 F.T.C.
F1I	30' x 18' x 1'-0"	SP 18 VERTICAL	P1 TO P1 F.T.C.
F1J	30' x 18' x 1'-0"	SP 18 VERTICAL	P1 TO P1 F.T.C.
F1K	30' x 18' x 1'-0"	SP 18 VERTICAL	P1 TO P1 F.T.C.
F1L	30' x 18' x 1'-0"	SP 18 VERTICAL	P1 TO P1 F.T.C.
F1M	30' x 18' x 1'-0"	SP 18 VERTICAL	P1 TO P1 F.T.C.
F1N	30' x 18' x 1'-0"	SP 18 VERTICAL	P1 TO P1 F.T.C.
F1O	30' x 18' x 1'-0"	SP 18 VERTICAL	P1 TO P1 F.T.C.
F1P	30' x 18' x 1'-0"	SP 18 VERTICAL	P1 TO P1 F.T.C.
F1Q	30' x 18' x 1'-0"	SP 18 VERTICAL	P1 TO P1 F.T.C.
F1R	30' x 18' x 1'-0"	SP 18 VERTICAL	P1 TO P1 F.T.C.
F1S	30' x 18' x 1'-0"	SP 18 VERTICAL	P1 TO P1 F.T.C.
F1T	30' x 18' x 1'-0"	SP 18 VERTICAL	P1 TO P1 F.T.C.
F1U	30' x 18' x 1'-0"	SP 18 VERTICAL	P1 TO P1 F.T.C.
F1V	30' x 18' x 1'-0"	SP 18 VERTICAL	P1 TO P1 F.T.C.
F1W	30' x 18' x 1'-0"	SP 18 VERTICAL	P1 TO P1 F.T.C.
F1X	30' x 18' x 1'-0"	SP 18 VERTICAL	P1 TO P1 F.T.C.
F1Y	30' x 18' x 1'-0"	SP 18 VERTICAL	P1 TO P1 F.T.C.
F1Z	30' x 18' x 1'-0"	SP 18 VERTICAL	P1 TO P1 F.T.C.

FOOTING SCHEDULE & DETAILS
SCALE: 3/8" = 1'-0"

BACKFILL FND WALL AREA



FOUNDATION PLAN - LEVEL 1&2 - ZONE 4
SCALE: 1/8" = 1'-0"

SHEET NOTES

1. ALL DIMENSIONS UNLESS OTHERWISE NOTED ARE IN FEET AND INCHES.
2. ALL REINFORCEMENT SHALL BE CONFORM TO THE REQUIREMENTS OF THE AIA 308.1000 SERIES.
3. ALL REINFORCEMENT SHALL BE CONFORM TO THE REQUIREMENTS OF THE AIA 308.1000 SERIES.
4. ALL REINFORCEMENT SHALL BE CONFORM TO THE REQUIREMENTS OF THE AIA 308.1000 SERIES.
5. ALL REINFORCEMENT SHALL BE CONFORM TO THE REQUIREMENTS OF THE AIA 308.1000 SERIES.
6. ALL REINFORCEMENT SHALL BE CONFORM TO THE REQUIREMENTS OF THE AIA 308.1000 SERIES.
7. ALL REINFORCEMENT SHALL BE CONFORM TO THE REQUIREMENTS OF THE AIA 308.1000 SERIES.
8. ALL REINFORCEMENT SHALL BE CONFORM TO THE REQUIREMENTS OF THE AIA 308.1000 SERIES.
9. ALL REINFORCEMENT SHALL BE CONFORM TO THE REQUIREMENTS OF THE AIA 308.1000 SERIES.
10. ALL REINFORCEMENT SHALL BE CONFORM TO THE REQUIREMENTS OF THE AIA 308.1000 SERIES.
11. ALL REINFORCEMENT SHALL BE CONFORM TO THE REQUIREMENTS OF THE AIA 308.1000 SERIES.
12. ALL REINFORCEMENT SHALL BE CONFORM TO THE REQUIREMENTS OF THE AIA 308.1000 SERIES.
13. ALL REINFORCEMENT SHALL BE CONFORM TO THE REQUIREMENTS OF THE AIA 308.1000 SERIES.
14. ALL REINFORCEMENT SHALL BE CONFORM TO THE REQUIREMENTS OF THE AIA 308.1000 SERIES.
15. ALL REINFORCEMENT SHALL BE CONFORM TO THE REQUIREMENTS OF THE AIA 308.1000 SERIES.
16. ALL REINFORCEMENT SHALL BE CONFORM TO THE REQUIREMENTS OF THE AIA 308.1000 SERIES.
17. ALL REINFORCEMENT SHALL BE CONFORM TO THE REQUIREMENTS OF THE AIA 308.1000 SERIES.
18. ALL REINFORCEMENT SHALL BE CONFORM TO THE REQUIREMENTS OF THE AIA 308.1000 SERIES.
19. ALL REINFORCEMENT SHALL BE CONFORM TO THE REQUIREMENTS OF THE AIA 308.1000 SERIES.
20. ALL REINFORCEMENT SHALL BE CONFORM TO THE REQUIREMENTS OF THE AIA 308.1000 SERIES.
21. ALL REINFORCEMENT SHALL BE CONFORM TO THE REQUIREMENTS OF THE AIA 308.1000 SERIES.
22. ALL REINFORCEMENT SHALL BE CONFORM TO THE REQUIREMENTS OF THE AIA 308.1000 SERIES.
23. ALL REINFORCEMENT SHALL BE CONFORM TO THE REQUIREMENTS OF THE AIA 308.1000 SERIES.
24. ALL REINFORCEMENT SHALL BE CONFORM TO THE REQUIREMENTS OF THE AIA 308.1000 SERIES.
25. ALL REINFORCEMENT SHALL BE CONFORM TO THE REQUIREMENTS OF THE AIA 308.1000 SERIES.

GENERAL NOTES

1. ALL DIMENSIONS UNLESS OTHERWISE NOTED ARE IN FEET AND INCHES.
2. ALL REINFORCEMENT SHALL BE CONFORM TO THE REQUIREMENTS OF THE AIA 308.1000 SERIES.
3. ALL REINFORCEMENT SHALL BE CONFORM TO THE REQUIREMENTS OF THE AIA 308.1000 SERIES.
4. ALL REINFORCEMENT SHALL BE CONFORM TO THE REQUIREMENTS OF THE AIA 308.1000 SERIES.
5. ALL REINFORCEMENT SHALL BE CONFORM TO THE REQUIREMENTS OF THE AIA 308.1000 SERIES.
6. ALL REINFORCEMENT SHALL BE CONFORM TO THE REQUIREMENTS OF THE AIA 308.1000 SERIES.
7. ALL REINFORCEMENT SHALL BE CONFORM TO THE REQUIREMENTS OF THE AIA 308.1000 SERIES.
8. ALL REINFORCEMENT SHALL BE CONFORM TO THE REQUIREMENTS OF THE AIA 308.1000 SERIES.
9. ALL REINFORCEMENT SHALL BE CONFORM TO THE REQUIREMENTS OF THE AIA 308.1000 SERIES.
10. ALL REINFORCEMENT SHALL BE CONFORM TO THE REQUIREMENTS OF THE AIA 308.1000 SERIES.
11. ALL REINFORCEMENT SHALL BE CONFORM TO THE REQUIREMENTS OF THE AIA 308.1000 SERIES.
12. ALL REINFORCEMENT SHALL BE CONFORM TO THE REQUIREMENTS OF THE AIA 308.1000 SERIES.
13. ALL REINFORCEMENT SHALL BE CONFORM TO THE REQUIREMENTS OF THE AIA 308.1000 SERIES.
14. ALL REINFORCEMENT SHALL BE CONFORM TO THE REQUIREMENTS OF THE AIA 308.1000 SERIES.
15. ALL REINFORCEMENT SHALL BE CONFORM TO THE REQUIREMENTS OF THE AIA 308.1000 SERIES.
16. ALL REINFORCEMENT SHALL BE CONFORM TO THE REQUIREMENTS OF THE AIA 308.1000 SERIES.
17. ALL REINFORCEMENT SHALL BE CONFORM TO THE REQUIREMENTS OF THE AIA 308.1000 SERIES.
18. ALL REINFORCEMENT SHALL BE CONFORM TO THE REQUIREMENTS OF THE AIA 308.1000 SERIES.
19. ALL REINFORCEMENT SHALL BE CONFORM TO THE REQUIREMENTS OF THE AIA 308.1000 SERIES.
20. ALL REINFORCEMENT SHALL BE CONFORM TO THE REQUIREMENTS OF THE AIA 308.1000 SERIES.
21. ALL REINFORCEMENT SHALL BE CONFORM TO THE REQUIREMENTS OF THE AIA 308.1000 SERIES.
22. ALL REINFORCEMENT SHALL BE CONFORM TO THE REQUIREMENTS OF THE AIA 308.1000 SERIES.
23. ALL REINFORCEMENT SHALL BE CONFORM TO THE REQUIREMENTS OF THE AIA 308.1000 SERIES.
24. ALL REINFORCEMENT SHALL BE CONFORM TO THE REQUIREMENTS OF THE AIA 308.1000 SERIES.
25. ALL REINFORCEMENT SHALL BE CONFORM TO THE REQUIREMENTS OF THE AIA 308.1000 SERIES.

KEY PLAN

Portland International Jetport
1001 Westbrook Street
Portland, Maine 04102

Gensler

3000 G Street, NW
Washington, DC 20007
Phone: 202.331.2500
Fax: 202.331.2527

WEST ASSOCIATES, INC.
10000 Westheimer Road, Suite 200
Houston, Texas 77042
Phone: 281.465.1000

Professional Engineer

SEAL: [Stamp]

PROJECT NUMBER: [Stamp]

DATE: [Stamp]

SCALE: 1/8" = 1'-0"

S02.01.04

2 of 2

Daily Observation Report

Project: <u>Portland Jetport Terminal Expansion</u>		Time: _____ End Time _____	Mileage: _____ End _____
Project No.: <u>557-14</u>	Tolls: <u>\$2</u>	Beg. Time _____	Begin _____
Per Diem/Lodging: _____		✓ <u>9.5</u> Total Time	✓ <u>28</u> Total

Observations:

In-Place Densities Done 18 All IPDs meet Specifications Reported to _____
 Not all IPDs meet Specifications Reported to _____

Phone Calls:

The Concrete Placement was cancelled due to rain and other logistical problems.

I performed 18 IPDs. The test locations are marked on the attached sketches.

I retrieved the 12 cylinders that I formed on 6/22/10.

R.R.C.

Reviewed By: MB

Signed: [Signature]

<input type="checkbox"/> HNU _____ day	<input type="checkbox"/> Concrete Equipment	Monitoring Well Supplies	
<input type="checkbox"/> Survey Level _____ day	<input checked="" type="checkbox"/> Nuc Densometer <u>1</u> day	_____ Bags of Bentonite	_____ Locks
<input type="checkbox"/> Rebar Meter _____ day	<input type="checkbox"/> Coring Machine _____ Dia.	_____ 5 ft. Screen 2" PVC	_____ Caps
_____ Bailers (Disposable)	_____ Inches Cored	_____ 10 ft. Screen 2" PVC	_____ Points
<input type="checkbox"/> Water Level Ind. _____ day	<input type="checkbox"/> Generator <input type="checkbox"/> Taylor Rental	_____ 5 ft. Riser 2" PVC	_____ Screw Caps
<input type="checkbox"/> Drill Rig _____ day	<input type="checkbox"/> Peristaltic Pump (note tubing used)	_____ 10 ft. Riser 2" PVC	
<input type="checkbox"/> Backhoe _____ day	<input type="checkbox"/> Other _____	_____ Other _____	

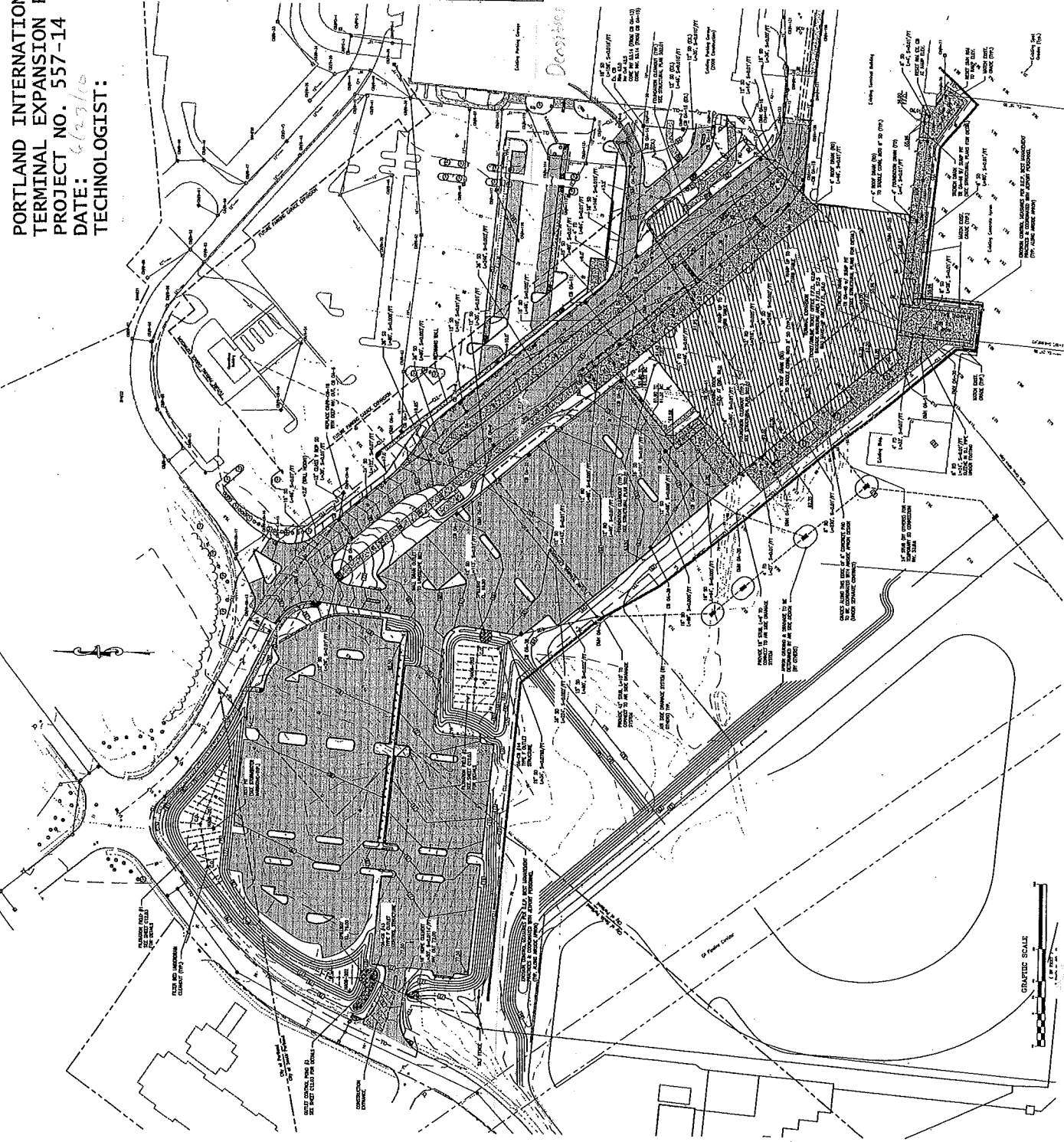
**PORTLAND INTERNATIONAL JETPORT
TERMINAL EXPANSION PROJECT
PROJECT NO. 557-14
DATE: 6/29/88
TECHNOLOGIST:**

Distance Station Schedule

NO.	STATION	NO.	STATION	NO.	STATION
1	0+00	1	0+00	1	0+00
2	0+10	2	0+10	2	0+10
3	0+20	3	0+20	3	0+20
4	0+30	4	0+30	4	0+30
5	0+40	5	0+40	5	0+40
6	0+50	6	0+50	6	0+50
7	0+60	7	0+60	7	0+60
8	0+70	8	0+70	8	0+70
9	0+80	9	0+80	9	0+80
10	0+90	10	0+90	10	0+90
11	1+00	11	1+00	11	1+00
12	1+10	12	1+10	12	1+10
13	1+20	13	1+20	13	1+20
14	1+30	14	1+30	14	1+30
15	1+40	15	1+40	15	1+40
16	1+50	16	1+50	16	1+50
17	1+60	17	1+60	17	1+60
18	1+70	18	1+70	18	1+70
19	1+80	19	1+80	19	1+80
20	1+90	20	1+90	20	1+90
21	2+00	21	2+00	21	2+00
22	2+10	22	2+10	22	2+10
23	2+20	23	2+20	23	2+20
24	2+30	24	2+30	24	2+30
25	2+40	25	2+40	25	2+40
26	2+50	26	2+50	26	2+50
27	2+60	27	2+60	27	2+60
28	2+70	28	2+70	28	2+70
29	2+80	29	2+80	29	2+80
30	2+90	30	2+90	30	2+90
31	3+00	31	3+00	31	3+00
32	3+10	32	3+10	32	3+10
33	3+20	33	3+20	33	3+20
34	3+30	34	3+30	34	3+30
35	3+40	35	3+40	35	3+40
36	3+50	36	3+50	36	3+50
37	3+60	37	3+60	37	3+60
38	3+70	38	3+70	38	3+70
39	3+80	39	3+80	39	3+80
40	3+90	40	3+90	40	3+90
41	4+00	41	4+00	41	4+00
42	4+10	42	4+10	42	4+10
43	4+20	43	4+20	43	4+20
44	4+30	44	4+30	44	4+30
45	4+40	45	4+40	45	4+40
46	4+50	46	4+50	46	4+50
47	4+60	47	4+60	47	4+60
48	4+70	48	4+70	48	4+70
49	4+80	49	4+80	49	4+80
50	4+90	50	4+90	50	4+90
51	5+00	51	5+00	51	5+00
52	5+10	52	5+10	52	5+10
53	5+20	53	5+20	53	5+20
54	5+30	54	5+30	54	5+30
55	5+40	55	5+40	55	5+40
56	5+50	56	5+50	56	5+50
57	5+60	57	5+60	57	5+60
58	5+70	58	5+70	58	5+70
59	5+80	59	5+80	59	5+80
60	5+90	60	5+90	60	5+90
61	6+00	61	6+00	61	6+00
62	6+10	62	6+10	62	6+10
63	6+20	63	6+20	63	6+20
64	6+30	64	6+30	64	6+30
65	6+40	65	6+40	65	6+40
66	6+50	66	6+50	66	6+50
67	6+60	67	6+60	67	6+60
68	6+70	68	6+70	68	6+70
69	6+80	69	6+80	69	6+80
70	6+90	70	6+90	70	6+90
71	7+00	71	7+00	71	7+00
72	7+10	72	7+10	72	7+10
73	7+20	73	7+20	73	7+20
74	7+30	74	7+30	74	7+30
75	7+40	75	7+40	75	7+40
76	7+50	76	7+50	76	7+50
77	7+60	77	7+60	77	7+60
78	7+70	78	7+70	78	7+70
79	7+80	79	7+80	79	7+80
80	7+90	80	7+90	80	7+90
81	8+00	81	8+00	81	8+00
82	8+10	82	8+10	82	8+10
83	8+20	83	8+20	83	8+20
84	8+30	84	8+30	84	8+30
85	8+40	85	8+40	85	8+40
86	8+50	86	8+50	86	8+50
87	8+60	87	8+60	87	8+60
88	8+70	88	8+70	88	8+70
89	8+80	89	8+80	89	8+80
90	8+90	90	8+90	90	8+90
91	9+00	91	9+00	91	9+00
92	9+10	92	9+10	92	9+10
93	9+20	93	9+20	93	9+20
94	9+30	94	9+30	94	9+30
95	9+40	95	9+40	95	9+40
96	9+50	96	9+50	96	9+50
97	9+60	97	9+60	97	9+60
98	9+70	98	9+70	98	9+70
99	9+80	99	9+80	99	9+80
100	9+90	100	9+90	100	9+90

GENERAL NOTES

1. ALL WORK SHALL BE IN ACCORDANCE WITH THE PORTLAND INTERNATIONAL JETPORT MASTER PLAN AND THE PORTLAND INTERNATIONAL JETPORT DESIGN MANUAL.
2. THE CONTRACTOR SHALL BE RESPONSIBLE FOR OBTAINING ALL NECESSARY PERMITS AND APPROVALS FROM THE PORTLAND INTERNATIONAL JETPORT AUTHORITY AND THE PORTLAND INTERNATIONAL JETPORT AIRPORT SECURITY.
3. THE CONTRACTOR SHALL BE RESPONSIBLE FOR OBTAINING ALL NECESSARY PERMITS AND APPROVALS FROM THE PORTLAND INTERNATIONAL JETPORT AUTHORITY AND THE PORTLAND INTERNATIONAL JETPORT AIRPORT SECURITY.
4. THE CONTRACTOR SHALL BE RESPONSIBLE FOR OBTAINING ALL NECESSARY PERMITS AND APPROVALS FROM THE PORTLAND INTERNATIONAL JETPORT AUTHORITY AND THE PORTLAND INTERNATIONAL JETPORT AIRPORT SECURITY.
5. THE CONTRACTOR SHALL BE RESPONSIBLE FOR OBTAINING ALL NECESSARY PERMITS AND APPROVALS FROM THE PORTLAND INTERNATIONAL JETPORT AUTHORITY AND THE PORTLAND INTERNATIONAL JETPORT AIRPORT SECURITY.
6. THE CONTRACTOR SHALL BE RESPONSIBLE FOR OBTAINING ALL NECESSARY PERMITS AND APPROVALS FROM THE PORTLAND INTERNATIONAL JETPORT AUTHORITY AND THE PORTLAND INTERNATIONAL JETPORT AIRPORT SECURITY.
7. THE CONTRACTOR SHALL BE RESPONSIBLE FOR OBTAINING ALL NECESSARY PERMITS AND APPROVALS FROM THE PORTLAND INTERNATIONAL JETPORT AUTHORITY AND THE PORTLAND INTERNATIONAL JETPORT AIRPORT SECURITY.
8. THE CONTRACTOR SHALL BE RESPONSIBLE FOR OBTAINING ALL NECESSARY PERMITS AND APPROVALS FROM THE PORTLAND INTERNATIONAL JETPORT AUTHORITY AND THE PORTLAND INTERNATIONAL JETPORT AIRPORT SECURITY.
9. THE CONTRACTOR SHALL BE RESPONSIBLE FOR OBTAINING ALL NECESSARY PERMITS AND APPROVALS FROM THE PORTLAND INTERNATIONAL JETPORT AUTHORITY AND THE PORTLAND INTERNATIONAL JETPORT AIRPORT SECURITY.
10. THE CONTRACTOR SHALL BE RESPONSIBLE FOR OBTAINING ALL NECESSARY PERMITS AND APPROVALS FROM THE PORTLAND INTERNATIONAL JETPORT AUTHORITY AND THE PORTLAND INTERNATIONAL JETPORT AIRPORT SECURITY.
11. THE CONTRACTOR SHALL BE RESPONSIBLE FOR OBTAINING ALL NECESSARY PERMITS AND APPROVALS FROM THE PORTLAND INTERNATIONAL JETPORT AUTHORITY AND THE PORTLAND INTERNATIONAL JETPORT AIRPORT SECURITY.



6/23/10
 Portland International
 Jetport
 1001 Westbrook Street
 Portland, Maine 04102

Gensler

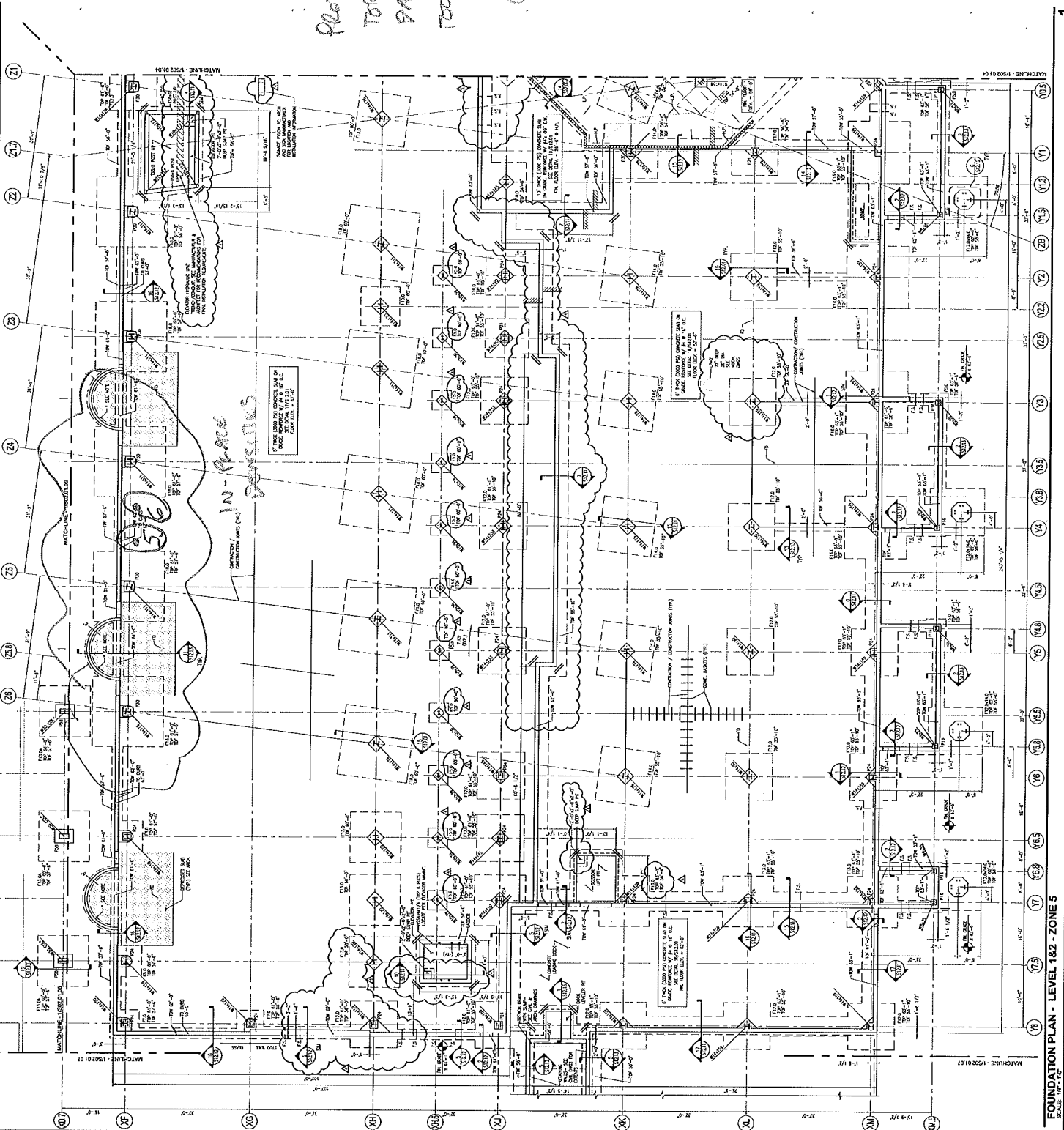
mes ASSOCIATES, INC.
 ARCHITECTS

PROJECT: 559-14
 TERMINAL ENHANCEMENTS
 DATE: 6/23/10
 TECH: KCC

06 1A LOCATION

SHEET NOTES

1. ALL DIMENSIONS UNLESS OTHERWISE NOTED ARE IN FEET AND INCHES.
2. ALL DIMENSIONS TO FACE UNLESS OTHERWISE NOTED.
3. ALL DIMENSIONS TO CENTERLINE UNLESS OTHERWISE NOTED.
4. ALL DIMENSIONS TO CENTERLINE UNLESS OTHERWISE NOTED.
5. ALL DIMENSIONS TO CENTERLINE UNLESS OTHERWISE NOTED.
6. ALL DIMENSIONS TO CENTERLINE UNLESS OTHERWISE NOTED.
7. ALL DIMENSIONS TO CENTERLINE UNLESS OTHERWISE NOTED.
8. ALL DIMENSIONS TO CENTERLINE UNLESS OTHERWISE NOTED.
9. ALL DIMENSIONS TO CENTERLINE UNLESS OTHERWISE NOTED.
10. ALL DIMENSIONS TO CENTERLINE UNLESS OTHERWISE NOTED.



GENERAL NOTES

1. ALL DIMENSIONS UNLESS OTHERWISE NOTED ARE IN FEET AND INCHES.
2. ALL DIMENSIONS TO FACE UNLESS OTHERWISE NOTED.
3. ALL DIMENSIONS TO CENTERLINE UNLESS OTHERWISE NOTED.
4. ALL DIMENSIONS TO CENTERLINE UNLESS OTHERWISE NOTED.
5. ALL DIMENSIONS TO CENTERLINE UNLESS OTHERWISE NOTED.
6. ALL DIMENSIONS TO CENTERLINE UNLESS OTHERWISE NOTED.
7. ALL DIMENSIONS TO CENTERLINE UNLESS OTHERWISE NOTED.
8. ALL DIMENSIONS TO CENTERLINE UNLESS OTHERWISE NOTED.
9. ALL DIMENSIONS TO CENTERLINE UNLESS OTHERWISE NOTED.
10. ALL DIMENSIONS TO CENTERLINE UNLESS OTHERWISE NOTED.
11. ALL DIMENSIONS TO CENTERLINE UNLESS OTHERWISE NOTED.
12. ALL DIMENSIONS TO CENTERLINE UNLESS OTHERWISE NOTED.
13. ALL DIMENSIONS TO CENTERLINE UNLESS OTHERWISE NOTED.
14. ALL DIMENSIONS TO CENTERLINE UNLESS OTHERWISE NOTED.
15. ALL DIMENSIONS TO CENTERLINE UNLESS OTHERWISE NOTED.
16. ALL DIMENSIONS TO CENTERLINE UNLESS OTHERWISE NOTED.
17. ALL DIMENSIONS TO CENTERLINE UNLESS OTHERWISE NOTED.
18. ALL DIMENSIONS TO CENTERLINE UNLESS OTHERWISE NOTED.
19. ALL DIMENSIONS TO CENTERLINE UNLESS OTHERWISE NOTED.
20. ALL DIMENSIONS TO CENTERLINE UNLESS OTHERWISE NOTED.
21. ALL DIMENSIONS TO CENTERLINE UNLESS OTHERWISE NOTED.
22. ALL DIMENSIONS TO CENTERLINE UNLESS OTHERWISE NOTED.
23. ALL DIMENSIONS TO CENTERLINE UNLESS OTHERWISE NOTED.
24. ALL DIMENSIONS TO CENTERLINE UNLESS OTHERWISE NOTED.
25. ALL DIMENSIONS TO CENTERLINE UNLESS OTHERWISE NOTED.



FOUNDATION PLAN - LEVEL 182 - ZONE 5
 SCALE: 1/8" = 1'-0"

S02.01.05



6/23/10

Portland International Jetport
 1001 Westbrook Street
 Portland, Maine 04102

Gensler

DESI ASSOCIATES, INC.
 ENGINEERS ARCHITECTS INTERIOR DESIGNERS CONSTRUCTION MANAGERS

2011 SPRING ST
 SUITE 100
 PORTLAND, ME 04102
 PHONE: 207.773.2200
 FAX: 207.773.2202

PROJECT 557-14
TERMINAL ENHANCEMENT
DATE: 6/23/10
TEAM: REC

GENERAL NOTES

1. ALL WORK SHALL BE IN ACCORDANCE WITH THE LATEST EDITIONS OF THE SPECIFICATIONS FOR STRUCTURAL STEEL, CONCRETE AND REINFORCING STEEL.
2. THE CONTRACTOR SHALL BE RESPONSIBLE FOR OBTAINING ALL NECESSARY PERMITS AND APPROVALS FROM THE APPLICABLE AGENCIES.
3. THE CONTRACTOR SHALL MAINTAIN ACCESS TO ALL EXISTING UTILITIES AND STRUCTURES AT ALL TIMES.
4. ALL WORK SHALL BE COMPLETED WITHIN THE SPECIFIED TIME FRAME.
5. THE CONTRACTOR SHALL MAINTAIN THE SAFETY OF ALL PERSONNEL AND THE PUBLIC AT ALL TIMES.
6. ALL MATERIALS AND WORKMANSHIP SHALL BE SUBJECT TO INSPECTION AND APPROVAL BY THE ARCHITECT.
7. THE CONTRACTOR SHALL BE RESPONSIBLE FOR PROTECTING ALL EXISTING STRUCTURES AND UTILITIES.
8. ALL WORK SHALL BE COMPLETED IN ACCORDANCE WITH THE LATEST EDITIONS OF THE SPECIFICATIONS FOR STRUCTURAL STEEL, CONCRETE AND REINFORCING STEEL.
9. THE CONTRACTOR SHALL MAINTAIN ACCESS TO ALL EXISTING UTILITIES AND STRUCTURES AT ALL TIMES.
10. ALL WORK SHALL BE COMPLETED WITHIN THE SPECIFIED TIME FRAME.
11. THE CONTRACTOR SHALL MAINTAIN THE SAFETY OF ALL PERSONNEL AND THE PUBLIC AT ALL TIMES.
12. ALL MATERIALS AND WORKMANSHIP SHALL BE SUBJECT TO INSPECTION AND APPROVAL BY THE ARCHITECT.
13. THE CONTRACTOR SHALL BE RESPONSIBLE FOR PROTECTING ALL EXISTING STRUCTURES AND UTILITIES.
14. ALL WORK SHALL BE COMPLETED IN ACCORDANCE WITH THE LATEST EDITIONS OF THE SPECIFICATIONS FOR STRUCTURAL STEEL, CONCRETE AND REINFORCING STEEL.
15. THE CONTRACTOR SHALL MAINTAIN ACCESS TO ALL EXISTING UTILITIES AND STRUCTURES AT ALL TIMES.
16. ALL WORK SHALL BE COMPLETED WITHIN THE SPECIFIED TIME FRAME.
17. THE CONTRACTOR SHALL MAINTAIN THE SAFETY OF ALL PERSONNEL AND THE PUBLIC AT ALL TIMES.
18. ALL MATERIALS AND WORKMANSHIP SHALL BE SUBJECT TO INSPECTION AND APPROVAL BY THE ARCHITECT.

KEY PLAN

1/8" = 1'-0"

S02.01.04

SHEET NOTES

1. ALL WORK SHALL BE IN ACCORDANCE WITH THE LATEST EDITIONS OF THE SPECIFICATIONS FOR STRUCTURAL STEEL, CONCRETE AND REINFORCING STEEL.
2. THE CONTRACTOR SHALL BE RESPONSIBLE FOR OBTAINING ALL NECESSARY PERMITS AND APPROVALS FROM THE APPLICABLE AGENCIES.
3. THE CONTRACTOR SHALL MAINTAIN ACCESS TO ALL EXISTING UTILITIES AND STRUCTURES AT ALL TIMES.
4. ALL WORK SHALL BE COMPLETED WITHIN THE SPECIFIED TIME FRAME.
5. THE CONTRACTOR SHALL MAINTAIN THE SAFETY OF ALL PERSONNEL AND THE PUBLIC AT ALL TIMES.
6. ALL MATERIALS AND WORKMANSHIP SHALL BE SUBJECT TO INSPECTION AND APPROVAL BY THE ARCHITECT.
7. THE CONTRACTOR SHALL BE RESPONSIBLE FOR PROTECTING ALL EXISTING STRUCTURES AND UTILITIES.
8. ALL WORK SHALL BE COMPLETED IN ACCORDANCE WITH THE LATEST EDITIONS OF THE SPECIFICATIONS FOR STRUCTURAL STEEL, CONCRETE AND REINFORCING STEEL.
9. THE CONTRACTOR SHALL MAINTAIN ACCESS TO ALL EXISTING UTILITIES AND STRUCTURES AT ALL TIMES.
10. ALL WORK SHALL BE COMPLETED WITHIN THE SPECIFIED TIME FRAME.
11. THE CONTRACTOR SHALL MAINTAIN THE SAFETY OF ALL PERSONNEL AND THE PUBLIC AT ALL TIMES.
12. ALL MATERIALS AND WORKMANSHIP SHALL BE SUBJECT TO INSPECTION AND APPROVAL BY THE ARCHITECT.
13. THE CONTRACTOR SHALL BE RESPONSIBLE FOR PROTECTING ALL EXISTING STRUCTURES AND UTILITIES.
14. ALL WORK SHALL BE COMPLETED IN ACCORDANCE WITH THE LATEST EDITIONS OF THE SPECIFICATIONS FOR STRUCTURAL STEEL, CONCRETE AND REINFORCING STEEL.
15. THE CONTRACTOR SHALL MAINTAIN ACCESS TO ALL EXISTING UTILITIES AND STRUCTURES AT ALL TIMES.
16. ALL WORK SHALL BE COMPLETED WITHIN THE SPECIFIED TIME FRAME.
17. THE CONTRACTOR SHALL MAINTAIN THE SAFETY OF ALL PERSONNEL AND THE PUBLIC AT ALL TIMES.
18. ALL MATERIALS AND WORKMANSHIP SHALL BE SUBJECT TO INSPECTION AND APPROVAL BY THE ARCHITECT.

GENERAL NOTES

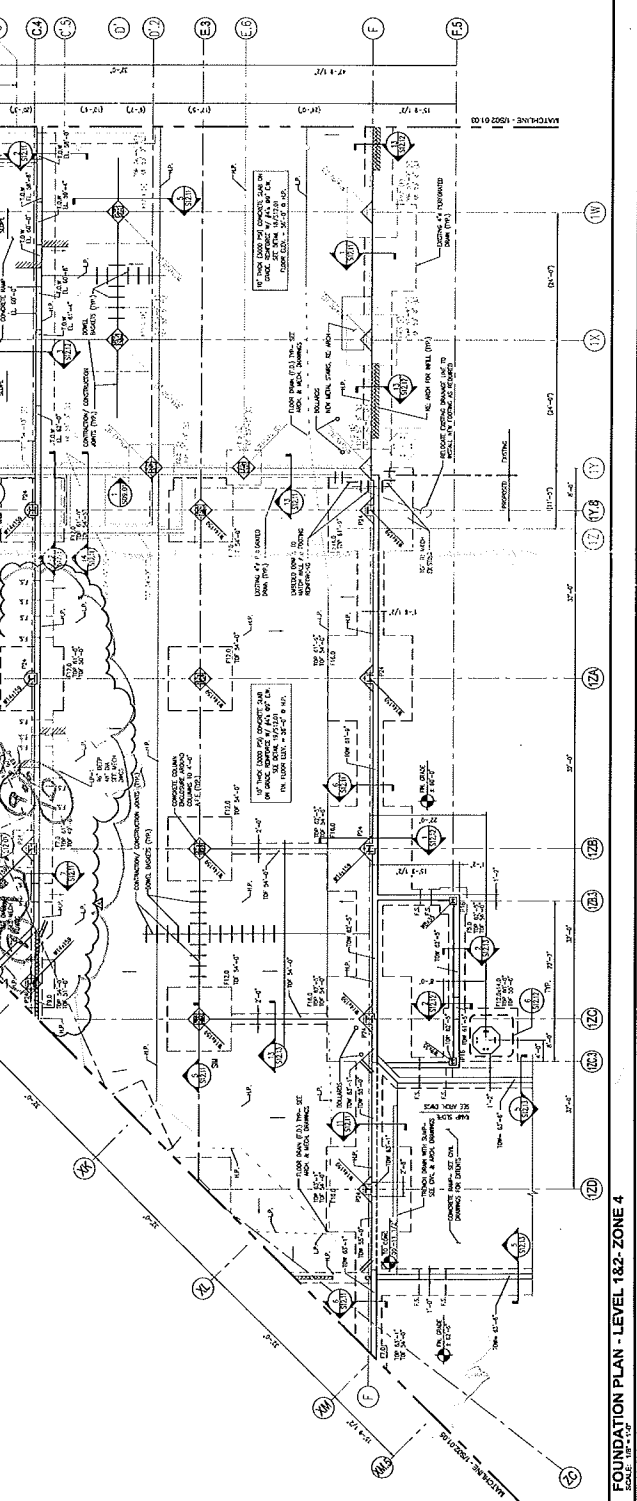
1. ALL WORK SHALL BE IN ACCORDANCE WITH THE LATEST EDITIONS OF THE SPECIFICATIONS FOR STRUCTURAL STEEL, CONCRETE AND REINFORCING STEEL.
2. THE CONTRACTOR SHALL BE RESPONSIBLE FOR OBTAINING ALL NECESSARY PERMITS AND APPROVALS FROM THE APPLICABLE AGENCIES.
3. THE CONTRACTOR SHALL MAINTAIN ACCESS TO ALL EXISTING UTILITIES AND STRUCTURES AT ALL TIMES.
4. ALL WORK SHALL BE COMPLETED WITHIN THE SPECIFIED TIME FRAME.
5. THE CONTRACTOR SHALL MAINTAIN THE SAFETY OF ALL PERSONNEL AND THE PUBLIC AT ALL TIMES.
6. ALL MATERIALS AND WORKMANSHIP SHALL BE SUBJECT TO INSPECTION AND APPROVAL BY THE ARCHITECT.
7. THE CONTRACTOR SHALL BE RESPONSIBLE FOR PROTECTING ALL EXISTING STRUCTURES AND UTILITIES.
8. ALL WORK SHALL BE COMPLETED IN ACCORDANCE WITH THE LATEST EDITIONS OF THE SPECIFICATIONS FOR STRUCTURAL STEEL, CONCRETE AND REINFORCING STEEL.
9. THE CONTRACTOR SHALL MAINTAIN ACCESS TO ALL EXISTING UTILITIES AND STRUCTURES AT ALL TIMES.
10. ALL WORK SHALL BE COMPLETED WITHIN THE SPECIFIED TIME FRAME.
11. THE CONTRACTOR SHALL MAINTAIN THE SAFETY OF ALL PERSONNEL AND THE PUBLIC AT ALL TIMES.
12. ALL MATERIALS AND WORKMANSHIP SHALL BE SUBJECT TO INSPECTION AND APPROVAL BY THE ARCHITECT.
13. THE CONTRACTOR SHALL BE RESPONSIBLE FOR PROTECTING ALL EXISTING STRUCTURES AND UTILITIES.
14. ALL WORK SHALL BE COMPLETED IN ACCORDANCE WITH THE LATEST EDITIONS OF THE SPECIFICATIONS FOR STRUCTURAL STEEL, CONCRETE AND REINFORCING STEEL.
15. THE CONTRACTOR SHALL MAINTAIN ACCESS TO ALL EXISTING UTILITIES AND STRUCTURES AT ALL TIMES.
16. ALL WORK SHALL BE COMPLETED WITHIN THE SPECIFIED TIME FRAME.
17. THE CONTRACTOR SHALL MAINTAIN THE SAFETY OF ALL PERSONNEL AND THE PUBLIC AT ALL TIMES.
18. ALL MATERIALS AND WORKMANSHIP SHALL BE SUBJECT TO INSPECTION AND APPROVAL BY THE ARCHITECT.

PIER SCHEDULE & DETAILS
 SCALE: 3/4" = 1'-0"

PIER TYPE	PIER DIMENSIONS	PIER SCHEDULE	REINFORCING
P1	10'-0" x 10'-0"	10'-0" x 10'-0" x 10'-0"	4#4 @ 12" x 4#4 @ 12"
P2	10'-0" x 10'-0"	10'-0" x 10'-0" x 10'-0"	4#4 @ 12" x 4#4 @ 12"
P3	10'-0" x 10'-0"	10'-0" x 10'-0" x 10'-0"	4#4 @ 12" x 4#4 @ 12"
P4	10'-0" x 10'-0"	10'-0" x 10'-0" x 10'-0"	4#4 @ 12" x 4#4 @ 12"
P5	10'-0" x 10'-0"	10'-0" x 10'-0" x 10'-0"	4#4 @ 12" x 4#4 @ 12"
P6	10'-0" x 10'-0"	10'-0" x 10'-0" x 10'-0"	4#4 @ 12" x 4#4 @ 12"
P7	10'-0" x 10'-0"	10'-0" x 10'-0" x 10'-0"	4#4 @ 12" x 4#4 @ 12"
P8	10'-0" x 10'-0"	10'-0" x 10'-0" x 10'-0"	4#4 @ 12" x 4#4 @ 12"
P9	10'-0" x 10'-0"	10'-0" x 10'-0" x 10'-0"	4#4 @ 12" x 4#4 @ 12"
P10	10'-0" x 10'-0"	10'-0" x 10'-0" x 10'-0"	4#4 @ 12" x 4#4 @ 12"
P11	10'-0" x 10'-0"	10'-0" x 10'-0" x 10'-0"	4#4 @ 12" x 4#4 @ 12"
P12	10'-0" x 10'-0"	10'-0" x 10'-0" x 10'-0"	4#4 @ 12" x 4#4 @ 12"
P13	10'-0" x 10'-0"	10'-0" x 10'-0" x 10'-0"	4#4 @ 12" x 4#4 @ 12"
P14	10'-0" x 10'-0"	10'-0" x 10'-0" x 10'-0"	4#4 @ 12" x 4#4 @ 12"
P15	10'-0" x 10'-0"	10'-0" x 10'-0" x 10'-0"	4#4 @ 12" x 4#4 @ 12"
P16	10'-0" x 10'-0"	10'-0" x 10'-0" x 10'-0"	4#4 @ 12" x 4#4 @ 12"
P17	10'-0" x 10'-0"	10'-0" x 10'-0" x 10'-0"	4#4 @ 12" x 4#4 @ 12"
P18	10'-0" x 10'-0"	10'-0" x 10'-0" x 10'-0"	4#4 @ 12" x 4#4 @ 12"
P19	10'-0" x 10'-0"	10'-0" x 10'-0" x 10'-0"	4#4 @ 12" x 4#4 @ 12"
P20	10'-0" x 10'-0"	10'-0" x 10'-0" x 10'-0"	4#4 @ 12" x 4#4 @ 12"

FOOTING SCHEDULE & DETAILS
 SCALE: 3/4" = 1'-0"

FOOTING TYPE	FOOTING DIMENSIONS	FOOTING SCHEDULE	REINFORCING
F1	10'-0" x 10'-0"	10'-0" x 10'-0" x 10'-0"	4#4 @ 12" x 4#4 @ 12"
F2	10'-0" x 10'-0"	10'-0" x 10'-0" x 10'-0"	4#4 @ 12" x 4#4 @ 12"
F3	10'-0" x 10'-0"	10'-0" x 10'-0" x 10'-0"	4#4 @ 12" x 4#4 @ 12"
F4	10'-0" x 10'-0"	10'-0" x 10'-0" x 10'-0"	4#4 @ 12" x 4#4 @ 12"
F5	10'-0" x 10'-0"	10'-0" x 10'-0" x 10'-0"	4#4 @ 12" x 4#4 @ 12"
F6	10'-0" x 10'-0"	10'-0" x 10'-0" x 10'-0"	4#4 @ 12" x 4#4 @ 12"
F7	10'-0" x 10'-0"	10'-0" x 10'-0" x 10'-0"	4#4 @ 12" x 4#4 @ 12"
F8	10'-0" x 10'-0"	10'-0" x 10'-0" x 10'-0"	4#4 @ 12" x 4#4 @ 12"
F9	10'-0" x 10'-0"	10'-0" x 10'-0" x 10'-0"	4#4 @ 12" x 4#4 @ 12"
F10	10'-0" x 10'-0"	10'-0" x 10'-0" x 10'-0"	4#4 @ 12" x 4#4 @ 12"
F11	10'-0" x 10'-0"	10'-0" x 10'-0" x 10'-0"	4#4 @ 12" x 4#4 @ 12"
F12	10'-0" x 10'-0"	10'-0" x 10'-0" x 10'-0"	4#4 @ 12" x 4#4 @ 12"
F13	10'-0" x 10'-0"	10'-0" x 10'-0" x 10'-0"	4#4 @ 12" x 4#4 @ 12"
F14	10'-0" x 10'-0"	10'-0" x 10'-0" x 10'-0"	4#4 @ 12" x 4#4 @ 12"
F15	10'-0" x 10'-0"	10'-0" x 10'-0" x 10'-0"	4#4 @ 12" x 4#4 @ 12"
F16	10'-0" x 10'-0"	10'-0" x 10'-0" x 10'-0"	4#4 @ 12" x 4#4 @ 12"
F17	10'-0" x 10'-0"	10'-0" x 10'-0" x 10'-0"	4#4 @ 12" x 4#4 @ 12"
F18	10'-0" x 10'-0"	10'-0" x 10'-0" x 10'-0"	4#4 @ 12" x 4#4 @ 12"
F19	10'-0" x 10'-0"	10'-0" x 10'-0" x 10'-0"	4#4 @ 12" x 4#4 @ 12"
F20	10'-0" x 10'-0"	10'-0" x 10'-0" x 10'-0"	4#4 @ 12" x 4#4 @ 12"





**SITE WORK
DAILY FIELD REPORT**

PROJECT: Terminal Enhancement at the Portland International Jetport
DATE: 06/24/2010
PROJECT LOCATION: Portland, Maine PROJECT NO.: 557-14
CLIENT: City of Portland WEATHER: Sun
CONTRACTOR: Turner Construction Co.
PREVIOUS DATE ON SITE: 06/23/2010

Time on-site at 10.5 hrs, 11 mi travel, Tolls: \$0.00
Nuc. Densometer – 1 day (L 500)

AREA 'A'

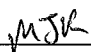
Upper lot: No work observed.

AREA 'B'

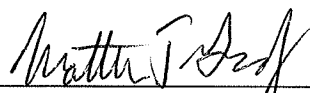
Gorham Sand & Gravel continued installing and backfilling drain lines. 8 IPDs taken on backfill materials.

AREA 'C'

Foundation wall backfill continues. 12 IPDs taken on gravel material.



Michael Kramlich
Prepared By



Matthew Grady
Reviewed By

IPD

SHEET NOTES

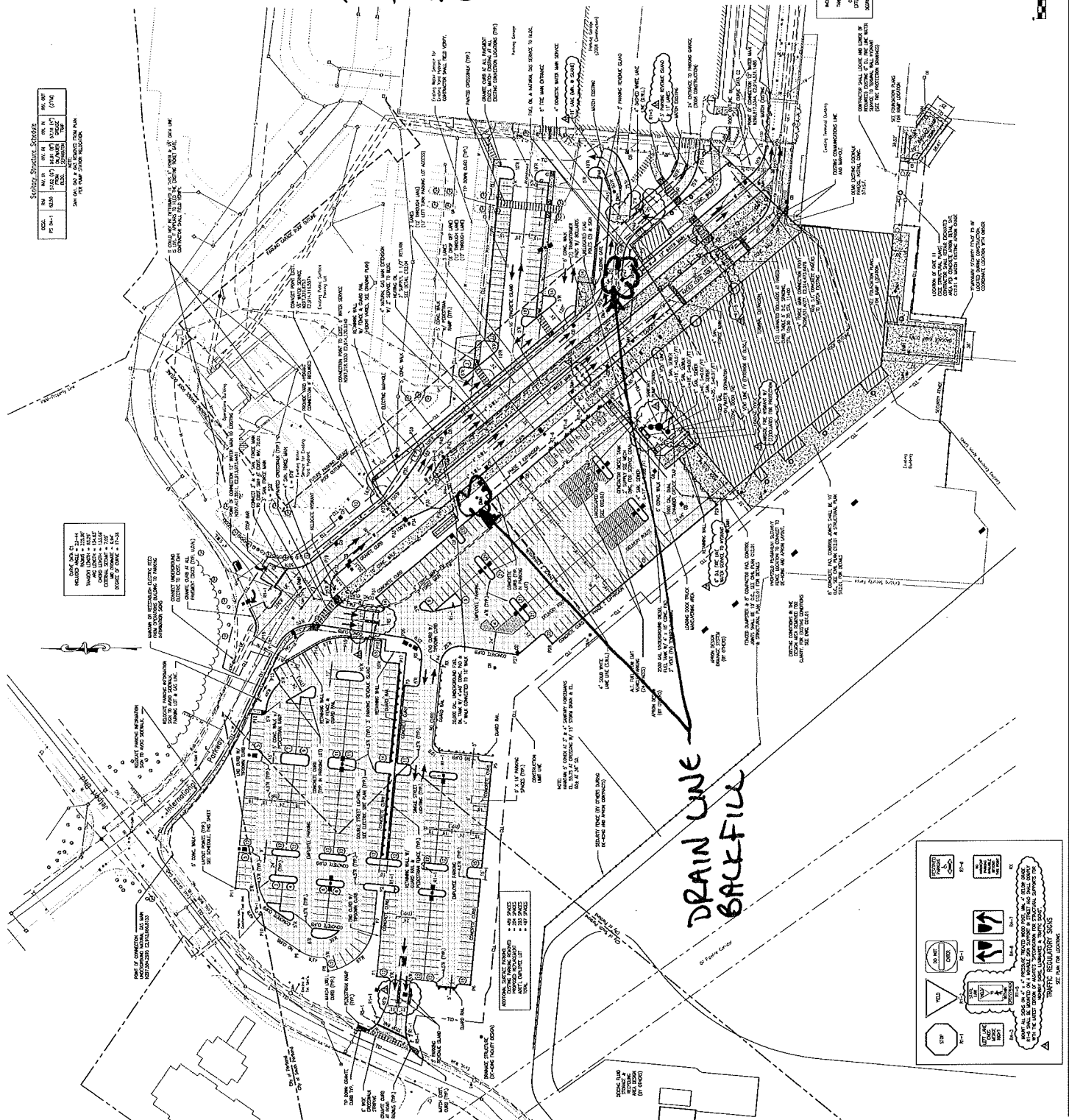
Structural Symbols

SYMBOL	DESCRIPTION
(Symbol)	CONCRETE
(Symbol)	STEEL
(Symbol)	WOOD
(Symbol)	GLASS
(Symbol)	MECHANICAL
(Symbol)	ELECTRICAL
(Symbol)	PLUMBING
(Symbol)	MECHANICAL
(Symbol)	ELECTRICAL
(Symbol)	PLUMBING
(Symbol)	MECHANICAL
(Symbol)	ELECTRICAL
(Symbol)	PLUMBING

Level Schedule

LEVEL	DESCRIPTION	ELEVATION
101	FINISHED FLOOR	100.00
102	MECHANICAL FLOOR	99.00
103	CONCRETE SLAB	98.00
104	GRADE	97.00
105	BASE GRADE	96.00
106	UNDERSLAB	95.00
107	FOUNDATION	94.00
108	FINISHED GRADE	93.00
109	BASE GRADE	92.00
110	UNDERSLAB	91.00
111	FOUNDATION	90.00
112	FINISHED GRADE	89.00
113	BASE GRADE	88.00
114	UNDERSLAB	87.00
115	FOUNDATION	86.00
116	FINISHED GRADE	85.00
117	BASE GRADE	84.00
118	UNDERSLAB	83.00
119	FOUNDATION	82.00
120	FINISHED GRADE	81.00
121	BASE GRADE	80.00
122	UNDERSLAB	79.00
123	FOUNDATION	78.00
124	FINISHED GRADE	77.00
125	BASE GRADE	76.00
126	UNDERSLAB	75.00
127	FOUNDATION	74.00
128	FINISHED GRADE	73.00
129	BASE GRADE	72.00
130	UNDERSLAB	71.00
131	FOUNDATION	70.00
132	FINISHED GRADE	69.00
133	BASE GRADE	68.00
134	UNDERSLAB	67.00
135	FOUNDATION	66.00
136	FINISHED GRADE	65.00
137	BASE GRADE	64.00
138	UNDERSLAB	63.00
139	FOUNDATION	62.00
140	FINISHED GRADE	61.00
141	BASE GRADE	60.00
142	UNDERSLAB	59.00
143	FOUNDATION	58.00
144	FINISHED GRADE	57.00
145	BASE GRADE	56.00
146	UNDERSLAB	55.00
147	FOUNDATION	54.00
148	FINISHED GRADE	53.00
149	BASE GRADE	52.00
150	UNDERSLAB	51.00
151	FOUNDATION	50.00
152	FINISHED GRADE	49.00
153	BASE GRADE	48.00
154	UNDERSLAB	47.00
155	FOUNDATION	46.00
156	FINISHED GRADE	45.00
157	BASE GRADE	44.00
158	UNDERSLAB	43.00
159	FOUNDATION	42.00
160	FINISHED GRADE	41.00
161	BASE GRADE	40.00
162	UNDERSLAB	39.00
163	FOUNDATION	38.00
164	FINISHED GRADE	37.00
165	BASE GRADE	36.00
166	UNDERSLAB	35.00
167	FOUNDATION	34.00
168	FINISHED GRADE	33.00
169	BASE GRADE	32.00
170	UNDERSLAB	31.00
171	FOUNDATION	30.00
172	FINISHED GRADE	29.00
173	BASE GRADE	28.00
174	UNDERSLAB	27.00
175	FOUNDATION	26.00
176	FINISHED GRADE	25.00
177	BASE GRADE	24.00
178	UNDERSLAB	23.00
179	FOUNDATION	22.00
180	FINISHED GRADE	21.00
181	BASE GRADE	20.00
182	UNDERSLAB	19.00
183	FOUNDATION	18.00
184	FINISHED GRADE	17.00
185	BASE GRADE	16.00
186	UNDERSLAB	15.00
187	FOUNDATION	14.00
188	FINISHED GRADE	13.00
189	BASE GRADE	12.00
190	UNDERSLAB	11.00
191	FOUNDATION	10.00
192	FINISHED GRADE	9.00
193	BASE GRADE	8.00
194	UNDERSLAB	7.00
195	FOUNDATION	6.00
196	FINISHED GRADE	5.00
197	BASE GRADE	4.00
198	UNDERSLAB	3.00
199	FOUNDATION	2.00
200	FINISHED GRADE	1.00
201	BASE GRADE	0.00

**PORTLAND INT'L AIRPORT
TERMINAL EXPANSION
557-14
6-24-2010
MSK**



- GENERAL NOTES**
1. ALL CONCRETE SHALL BE 4000 PSI STRENGTH WITH 4% STEEL FIBERS.
 2. ALL CONCRETE SHALL BE PLACED IN THE SHAPES SHOWN UNLESS OTHERWISE NOTED.
 3. ALL CONCRETE SHALL BE CURED WITH MOISTURE CURING COMPOUND.
 4. ALL CONCRETE SHALL BE TESTED FOR STRENGTH AND CURING.
 5. ALL CONCRETE SHALL BE TESTED FOR CURING.
 6. ALL CONCRETE SHALL BE TESTED FOR CURING.
 7. ALL CONCRETE SHALL BE TESTED FOR CURING.

SCALE

1" = 4'

GRAPHIC SCALE

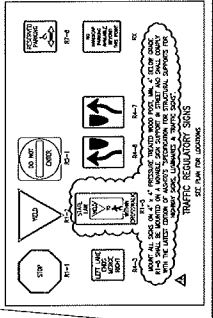
1" = 40'

1" = 80'

1" = 160'

1" = 320'

1" = 640'



**Portland International
Jetport**
1001 Westbrook Street
Portland, Maine 04102

Gensler

WEST ASSOCIATES, INC.
ARCHITECTS



C02.01

1" = 4'

SCALE

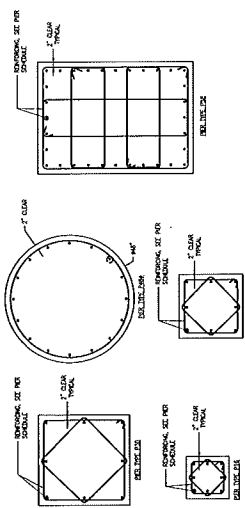
of 2

IPD

PORTLAND INT'L SETPORT
 TERMINAL EXPANSION
 557-14
 6-24-2010
 HSC

PIER SCHEDULE

PIER TYPE	PIER DIMENSIONS	VERTICAL DIMENSIONS	REINFORCING
PIA	10' x 10'	(1) 10' x 10' DIA. (2) 10' x 10' DIA.	(1) 10' x 10' DIA. (2) 10' x 10' DIA.
PIB	12' x 12'	(1) 12' x 12' DIA. (2) 12' x 12' DIA.	(1) 12' x 12' DIA. (2) 12' x 12' DIA.
PIA	14' x 14'	(1) 14' x 14' DIA. (2) 14' x 14' DIA.	(1) 14' x 14' DIA. (2) 14' x 14' DIA.
PIA	16' x 16'	(1) 16' x 16' DIA. (2) 16' x 16' DIA.	(1) 16' x 16' DIA. (2) 16' x 16' DIA.
PIA	18' x 18'	(1) 18' x 18' DIA. (2) 18' x 18' DIA.	(1) 18' x 18' DIA. (2) 18' x 18' DIA.



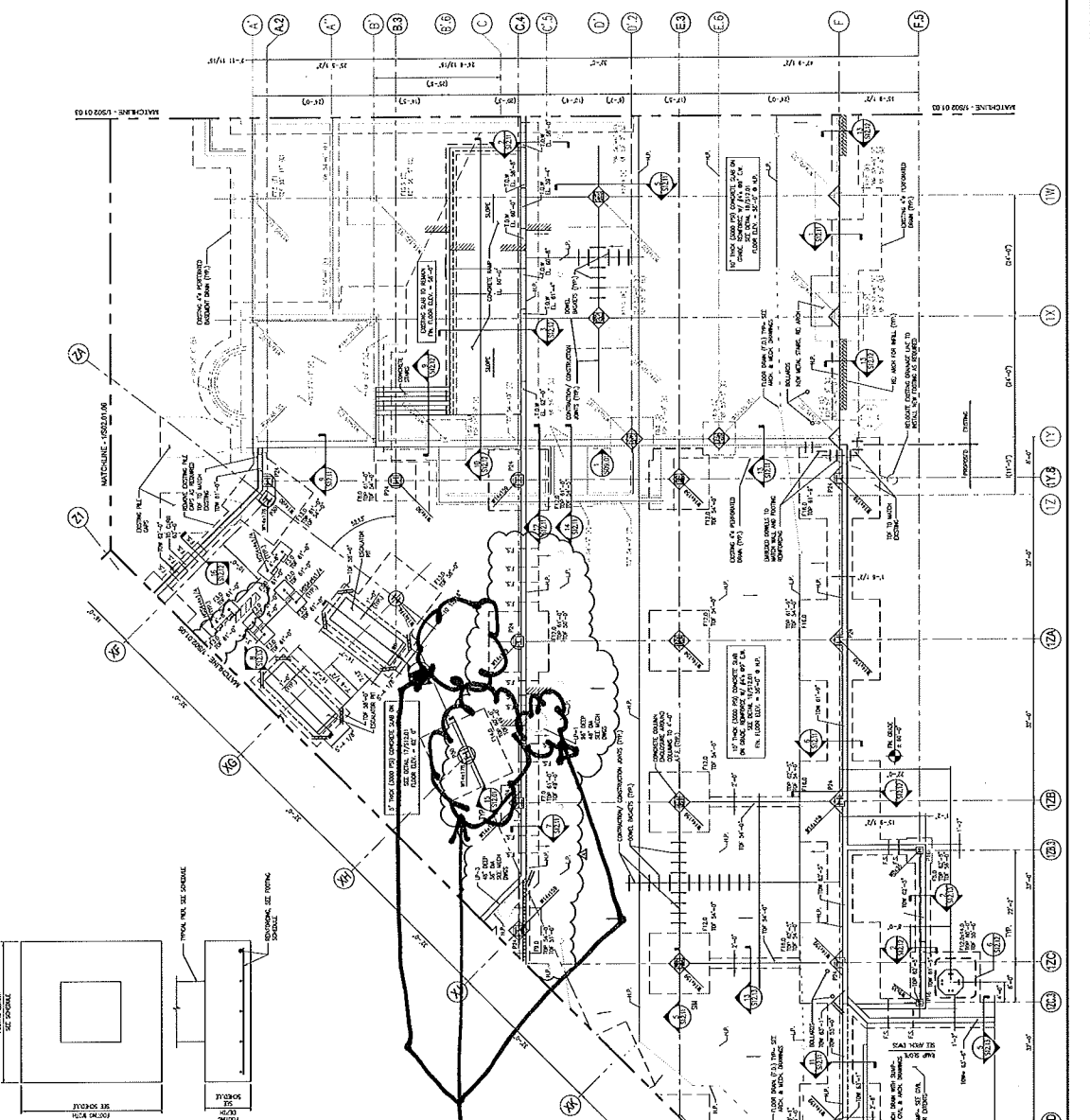
PIER SCHEDULE & DETAILS
 SCALE: 3/4" = 1'-0"

FOOTING SCHEDULE

FOOTING TYPE	FOOTING DIMENSIONS	REINFORCING
FOA	3'-0" x 3'-0" x 1'-0"	#4 @ 12" EA.
FOB	3'-0" x 3'-0" x 1'-0"	#4 @ 12" EA.
FOC	3'-0" x 3'-0" x 1'-0"	#4 @ 12" EA.
FOD	3'-0" x 3'-0" x 1'-0"	#4 @ 12" EA.
FOE	3'-0" x 3'-0" x 1'-0"	#4 @ 12" EA.
FOF	3'-0" x 3'-0" x 1'-0"	#4 @ 12" EA.
FOG	3'-0" x 3'-0" x 1'-0"	#4 @ 12" EA.
FOH	3'-0" x 3'-0" x 1'-0"	#4 @ 12" EA.
FOI	3'-0" x 3'-0" x 1'-0"	#4 @ 12" EA.
FOJ	3'-0" x 3'-0" x 1'-0"	#4 @ 12" EA.
FOK	3'-0" x 3'-0" x 1'-0"	#4 @ 12" EA.
FOL	3'-0" x 3'-0" x 1'-0"	#4 @ 12" EA.
FOM	3'-0" x 3'-0" x 1'-0"	#4 @ 12" EA.
FOO	3'-0" x 3'-0" x 1'-0"	#4 @ 12" EA.
FO1	3'-0" x 3'-0" x 1'-0"	#4 @ 12" EA.
FO2	3'-0" x 3'-0" x 1'-0"	#4 @ 12" EA.
FO3	3'-0" x 3'-0" x 1'-0"	#4 @ 12" EA.
FO4	3'-0" x 3'-0" x 1'-0"	#4 @ 12" EA.
FO5	3'-0" x 3'-0" x 1'-0"	#4 @ 12" EA.
FO6	3'-0" x 3'-0" x 1'-0"	#4 @ 12" EA.
FO7	3'-0" x 3'-0" x 1'-0"	#4 @ 12" EA.
FO8	3'-0" x 3'-0" x 1'-0"	#4 @ 12" EA.
FO9	3'-0" x 3'-0" x 1'-0"	#4 @ 12" EA.
FO0	3'-0" x 3'-0" x 1'-0"	#4 @ 12" EA.

FOOTING SCHEDULE & DETAILS
 SCALE: 3/4" = 1'-0"

BACKFILLING
 FND WALL AREA



FOUNDATION PLAN - LEVEL 1&2 - ZONE 4
 SCALE: 1/8" = 1'-0"

SHEET NOTES

1. REFER TO SHEET 557-14 FOR ALL OTHER SHEETS.
2. ALL DIMENSIONS UNLESS OTHERWISE NOTED ARE IN FEET AND INCHES.
3. ALL DIMENSIONS UNLESS OTHERWISE NOTED ARE IN FEET AND INCHES.
4. ALL DIMENSIONS UNLESS OTHERWISE NOTED ARE IN FEET AND INCHES.
5. ALL DIMENSIONS UNLESS OTHERWISE NOTED ARE IN FEET AND INCHES.
6. ALL DIMENSIONS UNLESS OTHERWISE NOTED ARE IN FEET AND INCHES.
7. ALL DIMENSIONS UNLESS OTHERWISE NOTED ARE IN FEET AND INCHES.
8. ALL DIMENSIONS UNLESS OTHERWISE NOTED ARE IN FEET AND INCHES.
9. ALL DIMENSIONS UNLESS OTHERWISE NOTED ARE IN FEET AND INCHES.
10. ALL DIMENSIONS UNLESS OTHERWISE NOTED ARE IN FEET AND INCHES.
11. ALL DIMENSIONS UNLESS OTHERWISE NOTED ARE IN FEET AND INCHES.
12. ALL DIMENSIONS UNLESS OTHERWISE NOTED ARE IN FEET AND INCHES.
13. ALL DIMENSIONS UNLESS OTHERWISE NOTED ARE IN FEET AND INCHES.
14. ALL DIMENSIONS UNLESS OTHERWISE NOTED ARE IN FEET AND INCHES.
15. ALL DIMENSIONS UNLESS OTHERWISE NOTED ARE IN FEET AND INCHES.
16. ALL DIMENSIONS UNLESS OTHERWISE NOTED ARE IN FEET AND INCHES.
17. ALL DIMENSIONS UNLESS OTHERWISE NOTED ARE IN FEET AND INCHES.
18. ALL DIMENSIONS UNLESS OTHERWISE NOTED ARE IN FEET AND INCHES.
19. ALL DIMENSIONS UNLESS OTHERWISE NOTED ARE IN FEET AND INCHES.
20. ALL DIMENSIONS UNLESS OTHERWISE NOTED ARE IN FEET AND INCHES.

Portland International Jetport
 1001 Westwood Street
 Portland, Maine 04102

Gensler

meest ASSOCIATES, INC.
 1001 Westwood Street
 Portland, Maine 04102

GENERAL NOTES

1. ALL DIMENSIONS UNLESS OTHERWISE NOTED ARE IN FEET AND INCHES.
2. ALL DIMENSIONS UNLESS OTHERWISE NOTED ARE IN FEET AND INCHES.
3. ALL DIMENSIONS UNLESS OTHERWISE NOTED ARE IN FEET AND INCHES.
4. ALL DIMENSIONS UNLESS OTHERWISE NOTED ARE IN FEET AND INCHES.
5. ALL DIMENSIONS UNLESS OTHERWISE NOTED ARE IN FEET AND INCHES.
6. ALL DIMENSIONS UNLESS OTHERWISE NOTED ARE IN FEET AND INCHES.
7. ALL DIMENSIONS UNLESS OTHERWISE NOTED ARE IN FEET AND INCHES.
8. ALL DIMENSIONS UNLESS OTHERWISE NOTED ARE IN FEET AND INCHES.
9. ALL DIMENSIONS UNLESS OTHERWISE NOTED ARE IN FEET AND INCHES.
10. ALL DIMENSIONS UNLESS OTHERWISE NOTED ARE IN FEET AND INCHES.
11. ALL DIMENSIONS UNLESS OTHERWISE NOTED ARE IN FEET AND INCHES.
12. ALL DIMENSIONS UNLESS OTHERWISE NOTED ARE IN FEET AND INCHES.
13. ALL DIMENSIONS UNLESS OTHERWISE NOTED ARE IN FEET AND INCHES.
14. ALL DIMENSIONS UNLESS OTHERWISE NOTED ARE IN FEET AND INCHES.
15. ALL DIMENSIONS UNLESS OTHERWISE NOTED ARE IN FEET AND INCHES.
16. ALL DIMENSIONS UNLESS OTHERWISE NOTED ARE IN FEET AND INCHES.
17. ALL DIMENSIONS UNLESS OTHERWISE NOTED ARE IN FEET AND INCHES.
18. ALL DIMENSIONS UNLESS OTHERWISE NOTED ARE IN FEET AND INCHES.
19. ALL DIMENSIONS UNLESS OTHERWISE NOTED ARE IN FEET AND INCHES.
20. ALL DIMENSIONS UNLESS OTHERWISE NOTED ARE IN FEET AND INCHES.

KEY PLAN

7 6 5 3 2 1

S02.01.04

1/8" = 1'-0"

2 OF 2

Daily Observation Report

Project: <u>Portland Jespar</u>	Time: _____ End Time _____	Mileage: _____ End _____
Project No.: <u>557-14</u>	Tolls: <u>\$2</u>	Beg. Time _____
Per Diem/Lodging: _____	✓ <u>7</u> Total Time	✓ <u>40</u> Total

Observations:

In-Place Densities Done _____ All IPDs meet Specifications Reported to _____
 Not all IPDs meet Specifications Reported to _____

Phone Calls:

I tested the 69 yards of concrete placed in the footings and walls marked on the concrete sheets for 6/24. The test results appeared to be in general accordance with specifications. 8" cylinders are curing in the field.

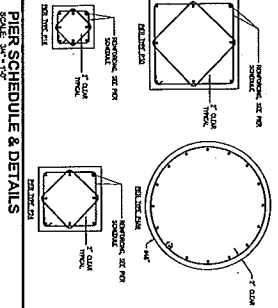
PRC

Reviewed By: MR

Signed: [Signature]

<input type="checkbox"/> HNU _____ day	<input checked="" type="checkbox"/> Concrete Equipment	Monitoring Well Supplies
<input type="checkbox"/> Survey Level _____ day	<input type="checkbox"/> Nuc Densometer _____ day	_____ Bags of Bentonite _____ Locks
<input type="checkbox"/> Rebar Meter _____ day	<input type="checkbox"/> Coring Machine _____ Dia.	_____ 5 ft. Screen 2" PVC _____ Caps
_____ Bailers (Disposable)	_____ Inches Cored	_____ 10 ft. Screen 2" PVC _____ Points
<input type="checkbox"/> Water Level Ind. _____ day	<input type="checkbox"/> Generator <input type="checkbox"/> Taylor Rental	_____ 5 ft. Riser 2" PVC _____ Screw Caps
<input type="checkbox"/> Drill Rig _____ day	<input type="checkbox"/> Peristaltic Pump (note tubing used)	_____ 10 ft. Riser 2" PVC
<input type="checkbox"/> Backhoe _____ day	<input type="checkbox"/> Other _____	_____ Other _____

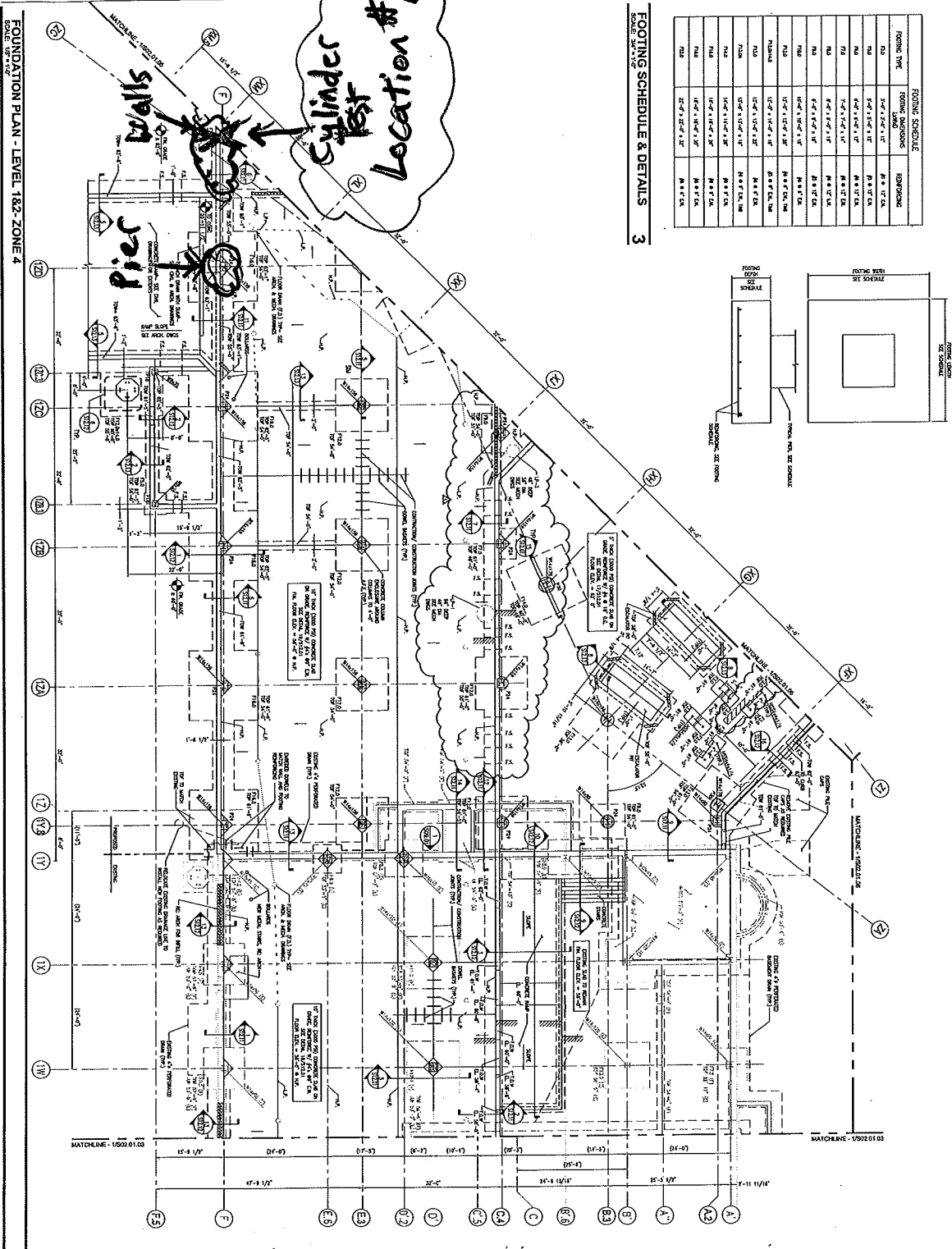
PROJECT: Terminal Expansion
 PROJECT #: 55-01-11
 DATE: 6/24/10
 TWH: RRC



PIER TYPE	PIER SCHEDULE	PIER SCHEDULE
P4	VERTICAL REINFORCING	P2
P5	VERTICAL REINFORCING	P3
P6	VERTICAL REINFORCING	P4
P7	VERTICAL REINFORCING	P5
P8	VERTICAL REINFORCING	P6
P9	VERTICAL REINFORCING	P7
P10	VERTICAL REINFORCING	P8
P11	VERTICAL REINFORCING	P9
P12	VERTICAL REINFORCING	P10
P13	VERTICAL REINFORCING	P11
P14	VERTICAL REINFORCING	P12
P15	VERTICAL REINFORCING	P13
P16	VERTICAL REINFORCING	P14
P17	VERTICAL REINFORCING	P15
P18	VERTICAL REINFORCING	P16
P19	VERTICAL REINFORCING	P17
P20	VERTICAL REINFORCING	P18
P21	VERTICAL REINFORCING	P19
P22	VERTICAL REINFORCING	P20
P23	VERTICAL REINFORCING	P21
P24	VERTICAL REINFORCING	P22
P25	VERTICAL REINFORCING	P23
P26	VERTICAL REINFORCING	P24
P27	VERTICAL REINFORCING	P25
P28	VERTICAL REINFORCING	P26
P29	VERTICAL REINFORCING	P27
P30	VERTICAL REINFORCING	P28
P31	VERTICAL REINFORCING	P29
P32	VERTICAL REINFORCING	P30
P33	VERTICAL REINFORCING	P31
P34	VERTICAL REINFORCING	P32
P35	VERTICAL REINFORCING	P33
P36	VERTICAL REINFORCING	P34
P37	VERTICAL REINFORCING	P35
P38	VERTICAL REINFORCING	P36
P39	VERTICAL REINFORCING	P37
P40	VERTICAL REINFORCING	P38
P41	VERTICAL REINFORCING	P39
P42	VERTICAL REINFORCING	P40
P43	VERTICAL REINFORCING	P41
P44	VERTICAL REINFORCING	P42
P45	VERTICAL REINFORCING	P43
P46	VERTICAL REINFORCING	P44
P47	VERTICAL REINFORCING	P45
P48	VERTICAL REINFORCING	P46
P49	VERTICAL REINFORCING	P47
P50	VERTICAL REINFORCING	P48

FOOTING SCHEDULE & DETAILS
 SCALE: 3/4" = 1'-0"

FOOTING TYPE	FOOTING DIMENSIONS	FOOTING SCHEDULE
F1	1'-0" x 1'-0"	F1
F2	1'-0" x 1'-0"	F2
F3	1'-0" x 1'-0"	F3
F4	1'-0" x 1'-0"	F4
F5	1'-0" x 1'-0"	F5
F6	1'-0" x 1'-0"	F6
F7	1'-0" x 1'-0"	F7
F8	1'-0" x 1'-0"	F8
F9	1'-0" x 1'-0"	F9
F10	1'-0" x 1'-0"	F10
F11	1'-0" x 1'-0"	F11
F12	1'-0" x 1'-0"	F12
F13	1'-0" x 1'-0"	F13
F14	1'-0" x 1'-0"	F14
F15	1'-0" x 1'-0"	F15
F16	1'-0" x 1'-0"	F16
F17	1'-0" x 1'-0"	F17
F18	1'-0" x 1'-0"	F18
F19	1'-0" x 1'-0"	F19
F20	1'-0" x 1'-0"	F20
F21	1'-0" x 1'-0"	F21
F22	1'-0" x 1'-0"	F22
F23	1'-0" x 1'-0"	F23
F24	1'-0" x 1'-0"	F24
F25	1'-0" x 1'-0"	F25
F26	1'-0" x 1'-0"	F26
F27	1'-0" x 1'-0"	F27
F28	1'-0" x 1'-0"	F28
F29	1'-0" x 1'-0"	F29
F30	1'-0" x 1'-0"	F30



FOUNDATION PLAN - LEVEL 182 - ZONE 4
 SCALE: 3/4" = 1'-0"

SHEET NOTES

1. CONSULT THE GENERAL NOTES AND SPECIFICATIONS FOR A COMPLETE LIST OF NOTES AND SPECIFICATIONS.

2. REFER TO THE PROJECT MANUAL FOR A COMPLETE LIST OF NOTES AND SPECIFICATIONS.

3. THE FOUNDATION SHALL BE CONSTRUCTED IN ACCORDANCE WITH THE LATEST EDITION OF THE INTERNATIONAL BUILDING CODE (IBC) AND THE LATEST EDITION OF THE ACI 318 CODE FOR STRUCTURAL CONCRETE.

4. THE FOUNDATION SHALL BE CONSTRUCTED IN ACCORDANCE WITH THE LATEST EDITION OF THE ACI 308 CODE FOR CONCRETE AND MASONRY.

5. THE FOUNDATION SHALL BE CONSTRUCTED IN ACCORDANCE WITH THE LATEST EDITION OF THE ACI 315 CODE FOR REINFORCING STEEL.

6. THE FOUNDATION SHALL BE CONSTRUCTED IN ACCORDANCE WITH THE LATEST EDITION OF THE ACI 309 CODE FOR FIBER REINFORCED POLYMER (FRP) REINFORCEMENT.

7. THE FOUNDATION SHALL BE CONSTRUCTED IN ACCORDANCE WITH THE LATEST EDITION OF THE ACI 308.1 CODE FOR CONCRETE AND MASONRY.

8. THE FOUNDATION SHALL BE CONSTRUCTED IN ACCORDANCE WITH THE LATEST EDITION OF THE ACI 318.1 CODE FOR STRUCTURAL CONCRETE.

9. THE FOUNDATION SHALL BE CONSTRUCTED IN ACCORDANCE WITH THE LATEST EDITION OF THE ACI 315.1 CODE FOR REINFORCING STEEL.

10. THE FOUNDATION SHALL BE CONSTRUCTED IN ACCORDANCE WITH THE LATEST EDITION OF THE ACI 309.1 CODE FOR FIBER REINFORCED POLYMER (FRP) REINFORCEMENT.

11. THE FOUNDATION SHALL BE CONSTRUCTED IN ACCORDANCE WITH THE LATEST EDITION OF THE ACI 308.1.1 CODE FOR CONCRETE AND MASONRY.

12. THE FOUNDATION SHALL BE CONSTRUCTED IN ACCORDANCE WITH THE LATEST EDITION OF THE ACI 318.1.1 CODE FOR STRUCTURAL CONCRETE.

13. THE FOUNDATION SHALL BE CONSTRUCTED IN ACCORDANCE WITH THE LATEST EDITION OF THE ACI 315.1.1 CODE FOR REINFORCING STEEL.

14. THE FOUNDATION SHALL BE CONSTRUCTED IN ACCORDANCE WITH THE LATEST EDITION OF THE ACI 309.1.1 CODE FOR FIBER REINFORCED POLYMER (FRP) REINFORCEMENT.

15. THE FOUNDATION SHALL BE CONSTRUCTED IN ACCORDANCE WITH THE LATEST EDITION OF THE ACI 308.1.1.1 CODE FOR CONCRETE AND MASONRY.

16. THE FOUNDATION SHALL BE CONSTRUCTED IN ACCORDANCE WITH THE LATEST EDITION OF THE ACI 318.1.1.1 CODE FOR STRUCTURAL CONCRETE.

17. THE FOUNDATION SHALL BE CONSTRUCTED IN ACCORDANCE WITH THE LATEST EDITION OF THE ACI 315.1.1.1 CODE FOR REINFORCING STEEL.

18. THE FOUNDATION SHALL BE CONSTRUCTED IN ACCORDANCE WITH THE LATEST EDITION OF THE ACI 309.1.1.1 CODE FOR FIBER REINFORCED POLYMER (FRP) REINFORCEMENT.

19. THE FOUNDATION SHALL BE CONSTRUCTED IN ACCORDANCE WITH THE LATEST EDITION OF THE ACI 308.1.1.1.1 CODE FOR CONCRETE AND MASONRY.

20. THE FOUNDATION SHALL BE CONSTRUCTED IN ACCORDANCE WITH THE LATEST EDITION OF THE ACI 318.1.1.1.1 CODE FOR STRUCTURAL CONCRETE.

21. THE FOUNDATION SHALL BE CONSTRUCTED IN ACCORDANCE WITH THE LATEST EDITION OF THE ACI 315.1.1.1.1 CODE FOR REINFORCING STEEL.

22. THE FOUNDATION SHALL BE CONSTRUCTED IN ACCORDANCE WITH THE LATEST EDITION OF THE ACI 309.1.1.1.1 CODE FOR FIBER REINFORCED POLYMER (FRP) REINFORCEMENT.

Gensler
 1001 Westbank Street
 Portland, Maine 04102
 Phone: 207.633.6600
 Fax: 207.633.6601

GENERAL NOTES

1. THE FOUNDATION SHALL BE CONSTRUCTED IN ACCORDANCE WITH THE LATEST EDITION OF THE ACI 318 CODE FOR STRUCTURAL CONCRETE.

2. THE FOUNDATION SHALL BE CONSTRUCTED IN ACCORDANCE WITH THE LATEST EDITION OF THE ACI 315 CODE FOR REINFORCING STEEL.

3. THE FOUNDATION SHALL BE CONSTRUCTED IN ACCORDANCE WITH THE LATEST EDITION OF THE ACI 309 CODE FOR FIBER REINFORCED POLYMER (FRP) REINFORCEMENT.

4. THE FOUNDATION SHALL BE CONSTRUCTED IN ACCORDANCE WITH THE LATEST EDITION OF THE ACI 308 CODE FOR CONCRETE AND MASONRY.

5. THE FOUNDATION SHALL BE CONSTRUCTED IN ACCORDANCE WITH THE LATEST EDITION OF THE ACI 308.1 CODE FOR CONCRETE AND MASONRY.

6. THE FOUNDATION SHALL BE CONSTRUCTED IN ACCORDANCE WITH THE LATEST EDITION OF THE ACI 318.1 CODE FOR STRUCTURAL CONCRETE.

7. THE FOUNDATION SHALL BE CONSTRUCTED IN ACCORDANCE WITH THE LATEST EDITION OF THE ACI 315.1 CODE FOR REINFORCING STEEL.

8. THE FOUNDATION SHALL BE CONSTRUCTED IN ACCORDANCE WITH THE LATEST EDITION OF THE ACI 309.1 CODE FOR FIBER REINFORCED POLYMER (FRP) REINFORCEMENT.

9. THE FOUNDATION SHALL BE CONSTRUCTED IN ACCORDANCE WITH THE LATEST EDITION OF THE ACI 308.1.1 CODE FOR CONCRETE AND MASONRY.

10. THE FOUNDATION SHALL BE CONSTRUCTED IN ACCORDANCE WITH THE LATEST EDITION OF THE ACI 318.1.1 CODE FOR STRUCTURAL CONCRETE.

11. THE FOUNDATION SHALL BE CONSTRUCTED IN ACCORDANCE WITH THE LATEST EDITION OF THE ACI 315.1.1 CODE FOR REINFORCING STEEL.

12. THE FOUNDATION SHALL BE CONSTRUCTED IN ACCORDANCE WITH THE LATEST EDITION OF THE ACI 309.1.1 CODE FOR FIBER REINFORCED POLYMER (FRP) REINFORCEMENT.

13. THE FOUNDATION SHALL BE CONSTRUCTED IN ACCORDANCE WITH THE LATEST EDITION OF THE ACI 308.1.1.1 CODE FOR CONCRETE AND MASONRY.

14. THE FOUNDATION SHALL BE CONSTRUCTED IN ACCORDANCE WITH THE LATEST EDITION OF THE ACI 318.1.1.1 CODE FOR STRUCTURAL CONCRETE.

15. THE FOUNDATION SHALL BE CONSTRUCTED IN ACCORDANCE WITH THE LATEST EDITION OF THE ACI 315.1.1.1 CODE FOR REINFORCING STEEL.

16. THE FOUNDATION SHALL BE CONSTRUCTED IN ACCORDANCE WITH THE LATEST EDITION OF THE ACI 309.1.1.1 CODE FOR FIBER REINFORCED POLYMER (FRP) REINFORCEMENT.

KEY PLAN

S02.01.04

DATE: 6/24/10

PROJECT: Terminal Expansion

Portland International
Jetport
1001 Westbrook Street
Portland, Maine 04102

Gensler
mees/ ASSOCIATES, INC.
engineers - architects - interior - construction managers

2014 Shaw Ave.
Suite 300
Westborough, MA 01581
Phone: 508.336.2200

SHEET NOTES

1. ALL WORK SHALL BE IN ACCORDANCE WITH THE CITY OF PORTLAND, ME. DEPARTMENT OF PUBLIC WORKS, DIVISION OF ENGINEERING, AND THE STATE OF MAINE, DEPARTMENT OF CONSTRUCTION.
2. THE CONTRACTOR SHALL BE RESPONSIBLE FOR OBTAINING ALL NECESSARY PERMITS AND APPROVALS FROM THE CITY OF PORTLAND, ME. DEPARTMENT OF PUBLIC WORKS, DIVISION OF ENGINEERING, AND THE STATE OF MAINE, DEPARTMENT OF CONSTRUCTION.
3. THE CONTRACTOR SHALL BE RESPONSIBLE FOR OBTAINING ALL NECESSARY PERMITS AND APPROVALS FROM THE CITY OF PORTLAND, ME. DEPARTMENT OF PUBLIC WORKS, DIVISION OF ENGINEERING, AND THE STATE OF MAINE, DEPARTMENT OF CONSTRUCTION.
4. THE CONTRACTOR SHALL BE RESPONSIBLE FOR OBTAINING ALL NECESSARY PERMITS AND APPROVALS FROM THE CITY OF PORTLAND, ME. DEPARTMENT OF PUBLIC WORKS, DIVISION OF ENGINEERING, AND THE STATE OF MAINE, DEPARTMENT OF CONSTRUCTION.
5. THE CONTRACTOR SHALL BE RESPONSIBLE FOR OBTAINING ALL NECESSARY PERMITS AND APPROVALS FROM THE CITY OF PORTLAND, ME. DEPARTMENT OF PUBLIC WORKS, DIVISION OF ENGINEERING, AND THE STATE OF MAINE, DEPARTMENT OF CONSTRUCTION.
6. THE CONTRACTOR SHALL BE RESPONSIBLE FOR OBTAINING ALL NECESSARY PERMITS AND APPROVALS FROM THE CITY OF PORTLAND, ME. DEPARTMENT OF PUBLIC WORKS, DIVISION OF ENGINEERING, AND THE STATE OF MAINE, DEPARTMENT OF CONSTRUCTION.
7. THE CONTRACTOR SHALL BE RESPONSIBLE FOR OBTAINING ALL NECESSARY PERMITS AND APPROVALS FROM THE CITY OF PORTLAND, ME. DEPARTMENT OF PUBLIC WORKS, DIVISION OF ENGINEERING, AND THE STATE OF MAINE, DEPARTMENT OF CONSTRUCTION.
8. THE CONTRACTOR SHALL BE RESPONSIBLE FOR OBTAINING ALL NECESSARY PERMITS AND APPROVALS FROM THE CITY OF PORTLAND, ME. DEPARTMENT OF PUBLIC WORKS, DIVISION OF ENGINEERING, AND THE STATE OF MAINE, DEPARTMENT OF CONSTRUCTION.
9. THE CONTRACTOR SHALL BE RESPONSIBLE FOR OBTAINING ALL NECESSARY PERMITS AND APPROVALS FROM THE CITY OF PORTLAND, ME. DEPARTMENT OF PUBLIC WORKS, DIVISION OF ENGINEERING, AND THE STATE OF MAINE, DEPARTMENT OF CONSTRUCTION.
10. THE CONTRACTOR SHALL BE RESPONSIBLE FOR OBTAINING ALL NECESSARY PERMITS AND APPROVALS FROM THE CITY OF PORTLAND, ME. DEPARTMENT OF PUBLIC WORKS, DIVISION OF ENGINEERING, AND THE STATE OF MAINE, DEPARTMENT OF CONSTRUCTION.

PROJECT: Terminal Expansion
PROJECT#: 557-1A
DATE: 6/24/10
TBLH: RRC

GENERAL NOTES

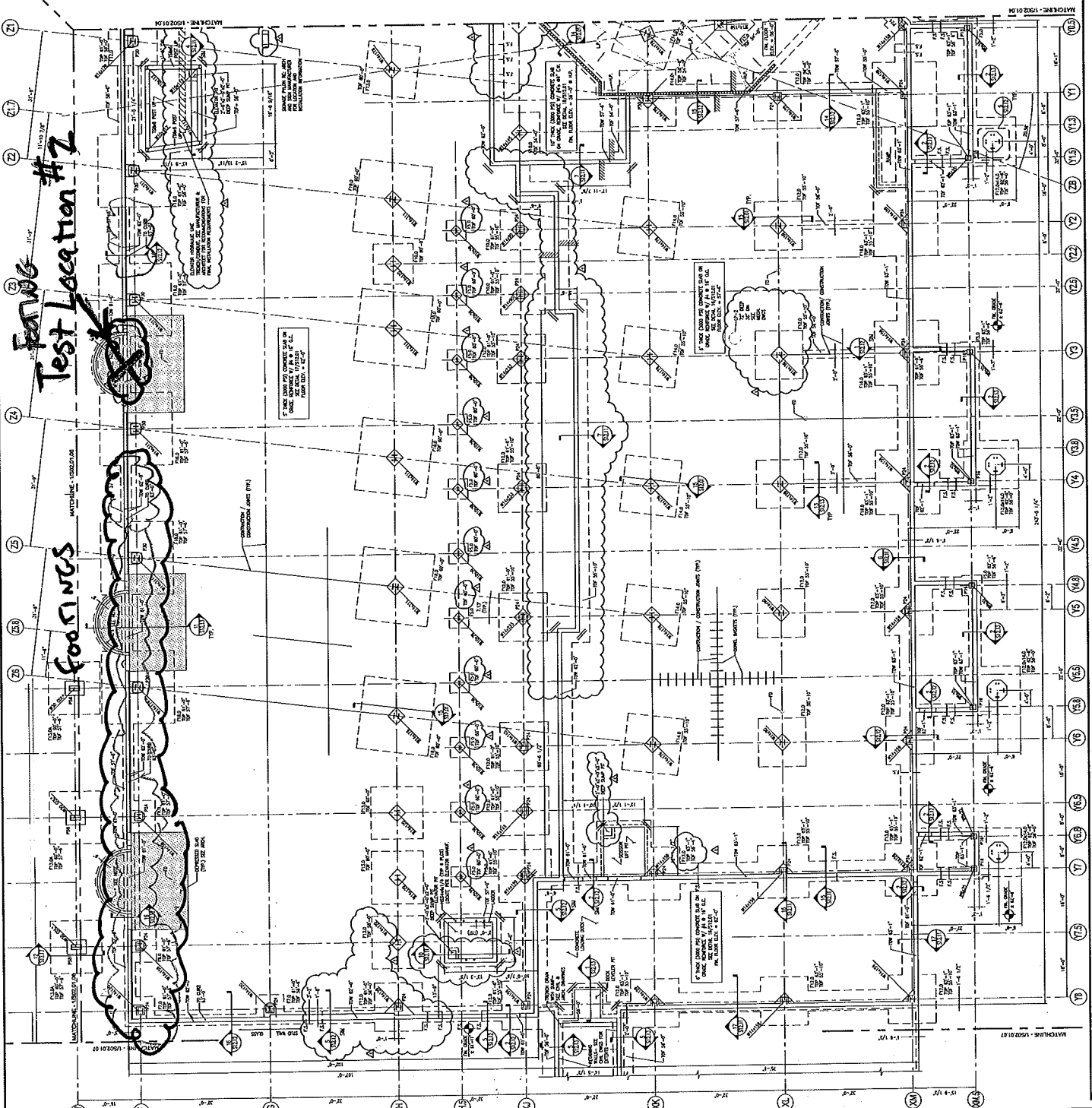
1. ALL WORK SHALL BE IN ACCORDANCE WITH THE CITY OF PORTLAND, ME. DEPARTMENT OF PUBLIC WORKS, DIVISION OF ENGINEERING, AND THE STATE OF MAINE, DEPARTMENT OF CONSTRUCTION.
2. THE CONTRACTOR SHALL BE RESPONSIBLE FOR OBTAINING ALL NECESSARY PERMITS AND APPROVALS FROM THE CITY OF PORTLAND, ME. DEPARTMENT OF PUBLIC WORKS, DIVISION OF ENGINEERING, AND THE STATE OF MAINE, DEPARTMENT OF CONSTRUCTION.
3. THE CONTRACTOR SHALL BE RESPONSIBLE FOR OBTAINING ALL NECESSARY PERMITS AND APPROVALS FROM THE CITY OF PORTLAND, ME. DEPARTMENT OF PUBLIC WORKS, DIVISION OF ENGINEERING, AND THE STATE OF MAINE, DEPARTMENT OF CONSTRUCTION.
4. THE CONTRACTOR SHALL BE RESPONSIBLE FOR OBTAINING ALL NECESSARY PERMITS AND APPROVALS FROM THE CITY OF PORTLAND, ME. DEPARTMENT OF PUBLIC WORKS, DIVISION OF ENGINEERING, AND THE STATE OF MAINE, DEPARTMENT OF CONSTRUCTION.
5. THE CONTRACTOR SHALL BE RESPONSIBLE FOR OBTAINING ALL NECESSARY PERMITS AND APPROVALS FROM THE CITY OF PORTLAND, ME. DEPARTMENT OF PUBLIC WORKS, DIVISION OF ENGINEERING, AND THE STATE OF MAINE, DEPARTMENT OF CONSTRUCTION.
6. THE CONTRACTOR SHALL BE RESPONSIBLE FOR OBTAINING ALL NECESSARY PERMITS AND APPROVALS FROM THE CITY OF PORTLAND, ME. DEPARTMENT OF PUBLIC WORKS, DIVISION OF ENGINEERING, AND THE STATE OF MAINE, DEPARTMENT OF CONSTRUCTION.
7. THE CONTRACTOR SHALL BE RESPONSIBLE FOR OBTAINING ALL NECESSARY PERMITS AND APPROVALS FROM THE CITY OF PORTLAND, ME. DEPARTMENT OF PUBLIC WORKS, DIVISION OF ENGINEERING, AND THE STATE OF MAINE, DEPARTMENT OF CONSTRUCTION.
8. THE CONTRACTOR SHALL BE RESPONSIBLE FOR OBTAINING ALL NECESSARY PERMITS AND APPROVALS FROM THE CITY OF PORTLAND, ME. DEPARTMENT OF PUBLIC WORKS, DIVISION OF ENGINEERING, AND THE STATE OF MAINE, DEPARTMENT OF CONSTRUCTION.
9. THE CONTRACTOR SHALL BE RESPONSIBLE FOR OBTAINING ALL NECESSARY PERMITS AND APPROVALS FROM THE CITY OF PORTLAND, ME. DEPARTMENT OF PUBLIC WORKS, DIVISION OF ENGINEERING, AND THE STATE OF MAINE, DEPARTMENT OF CONSTRUCTION.
10. THE CONTRACTOR SHALL BE RESPONSIBLE FOR OBTAINING ALL NECESSARY PERMITS AND APPROVALS FROM THE CITY OF PORTLAND, ME. DEPARTMENT OF PUBLIC WORKS, DIVISION OF ENGINEERING, AND THE STATE OF MAINE, DEPARTMENT OF CONSTRUCTION.

KEY PLAN

FOUNDATION PLAN - LEVEL 1&2 - ZONE 5

SCALE: 1/8" = 1'-0"

S02.01.05



FOUNDATION PLAN - LEVEL 1&2 - ZONE 5
SCALE: 1/8" = 1'-0"



**SITE WORK
DAILY FIELD REPORT**

PROJECT: Terminal Enhancement at the Portland International Jetport

DATE: 06/25/2010

PROJECT LOCATION: Portland, Maine

PROJECT NO.: 557-14

CLIENT: City of Portland

WEATHER: Sun

CONTRACTOR: Turner Construction Co.

PREVIOUS DATE ON SITE: 06/24/2010

Time on-site at 6 hrs, 21 mi travel, Tolls: \$0.00
Nuc. Densometer – 1 day (L 500)

AREA 'A'

Upper lot: No work observed.

AREA 'B'

Gorham Sand & Gravel continued installing and backfilling drain lines. 3 IPDs taken on backfill materials. Geothermal pipe fusers arrived on site, but couldn't seem to get anything done to get pipe in the ground.

AREA 'C'

No work observed.

MJR

Michael Kramlich

Prepared By

Matthew Grady

Matthew Grady

Reviewed By

R. W. Gillespie & Associates 86 industrial Park Rd., Suite 4, Saco, ME 04072- (207)286-8008

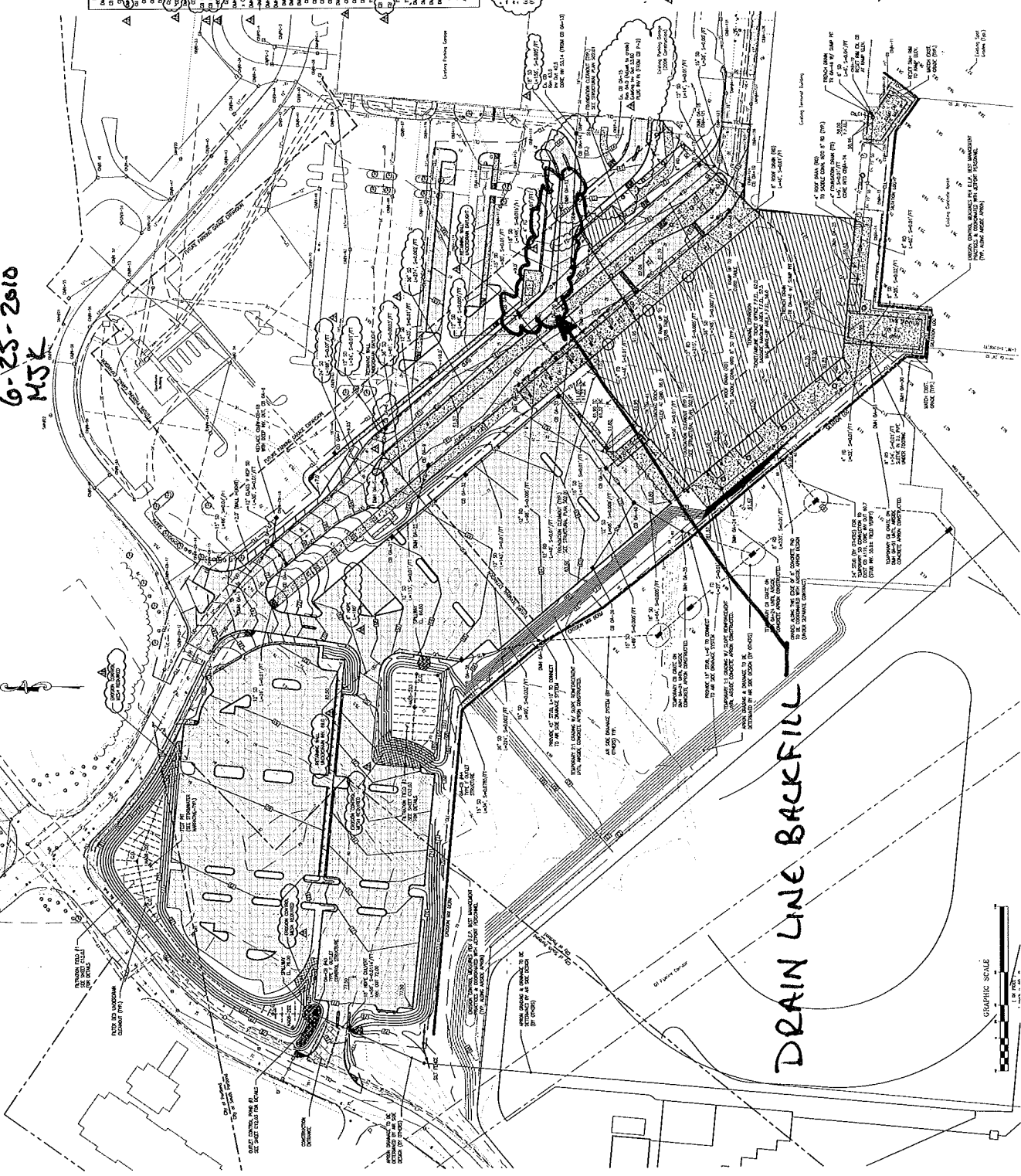
IPD

PORTLAND INT'L SEAPORT TERMINAL EXPANSION

SST-14
6-25-2010
MSK

SHEET NOTES

1. SEE EXISTING DRAWINGS FOR DETAILS OF THE MAJOR
2. SEE SHEET SST-13 FOR DETAILS OF THE MAJOR



Proposed Schedule

NO.	DATE	BY	REVISION
1	08/14/10	MSK	ISSUED FOR PERMIT
2	08/24/10	MSK	ISSUED FOR PERMIT
3	09/01/10	MSK	ISSUED FOR PERMIT
4	09/01/10	MSK	ISSUED FOR PERMIT
5	09/01/10	MSK	ISSUED FOR PERMIT
6	09/01/10	MSK	ISSUED FOR PERMIT
7	09/01/10	MSK	ISSUED FOR PERMIT
8	09/01/10	MSK	ISSUED FOR PERMIT
9	09/01/10	MSK	ISSUED FOR PERMIT
10	09/01/10	MSK	ISSUED FOR PERMIT
11	09/01/10	MSK	ISSUED FOR PERMIT
12	09/01/10	MSK	ISSUED FOR PERMIT
13	09/01/10	MSK	ISSUED FOR PERMIT
14	09/01/10	MSK	ISSUED FOR PERMIT
15	09/01/10	MSK	ISSUED FOR PERMIT
16	09/01/10	MSK	ISSUED FOR PERMIT
17	09/01/10	MSK	ISSUED FOR PERMIT
18	09/01/10	MSK	ISSUED FOR PERMIT
19	09/01/10	MSK	ISSUED FOR PERMIT
20	09/01/10	MSK	ISSUED FOR PERMIT
21	09/01/10	MSK	ISSUED FOR PERMIT
22	09/01/10	MSK	ISSUED FOR PERMIT
23	09/01/10	MSK	ISSUED FOR PERMIT
24	09/01/10	MSK	ISSUED FOR PERMIT
25	09/01/10	MSK	ISSUED FOR PERMIT
26	09/01/10	MSK	ISSUED FOR PERMIT
27	09/01/10	MSK	ISSUED FOR PERMIT
28	09/01/10	MSK	ISSUED FOR PERMIT
29	09/01/10	MSK	ISSUED FOR PERMIT
30	09/01/10	MSK	ISSUED FOR PERMIT

ABOUT THIS DRAWING
 1. ALL DIMENSIONS ARE IN FEET AND INCHES.
 2. ALL DIMENSIONS SHALL BE TO UNLESS OTHERWISE SPECIFIED.
 3. THE CONTRACTOR SHALL VERIFY ALL DIMENSIONS BEFORE CONSTRUCTION.

- ### GENERAL NOTES
1. ALL CONSTRUCTION SHALL BE IN ACCORDANCE WITH THE LATEST EDITIONS OF THE INTERNATIONAL BUILDING CODE (IBC) AND THE INTERNATIONAL MECHANICAL AND ELECTRICAL CODE (IMC).
 2. THE CONTRACTOR SHALL BE RESPONSIBLE FOR OBTAINING ALL NECESSARY PERMITS FROM THE CITY OF PORTLAND AND THE STATE OF MAINE.
 3. ALL UTILITIES SHALL BE LOCATED AND DEPTH MARKED PRIOR TO CONSTRUCTION.
 4. THE CONTRACTOR SHALL MAINTAIN ACCESS TO ALL EXISTING UTILITIES AND SERVICES AT ALL TIMES.
 5. ALL MATERIALS AND METHODS OF CONSTRUCTION SHALL BE APPROVED BY THE CITY ENGINEER.
 6. THE CONTRACTOR SHALL MAINTAIN ALL EXISTING STRUCTURES AND SERVICES.
 7. ALL WORK SHALL BE COMPLETED WITHIN THE SPECIFIED TIME FRAME.
 8. THE CONTRACTOR SHALL MAINTAIN A SAFE WORKING ENVIRONMENT AT ALL TIMES.
 9. ALL WASTE SHALL BE PROPERLY DISPOSED AT AN APPROVED LOCATION.
 10. THE CONTRACTOR SHALL MAINTAIN ALL EXISTING LANDSCAPING AND PLANTING.

DESIGNED BY: [Name]
 DRAWN BY: [Name]
 CHECKED BY: [Name]
 DATE: 09/01/10

**Portland International
Jetport**
 1001 Westbrook Street
 Portland, Maine 04102

Gensler
WEST ASSOCIATES, INC.
 1000 STATE STREET
 PORTLAND, ME 04102

1" = 40'
C02.02



**SITE WORK
DAILY FIELD REPORT**

PROJECT: Terminal Enhancement at the Portland International Jetport

DATE: 06/26/2010

PROJECT LOCATION: Portland, Maine

PROJECT NO.: 557-14

CLIENT: City of Portland

WEATHER: Sun

CONTRACTOR: Turner Construction Co.

PREVIOUS DATE ON SITE: 06/25/2010

Time on-site at 4 hrs 10 mi travel, Tolls: \$0.00

✓ Nuc. Densometer – 1/2 day (L 500)

AREA 'A'

Upper lot: No work observed.

AREA 'B'

Gorham Sand & Gravel began installing geothermal lines. 3 IPDs taken over installed lines. Pipe fusing crew left around 10:30am for unknown reasons.

AREA 'C'

No work observed.

MYK

Michael Kramlich

Prepared By

Matthew S. Grady

Matthew Grady

Reviewed By

1PD

PORTLAND INT'L AIRPORT
TERMINAL EXPANSION
557-14
6-26-2010
MSK

SHEET NOTES

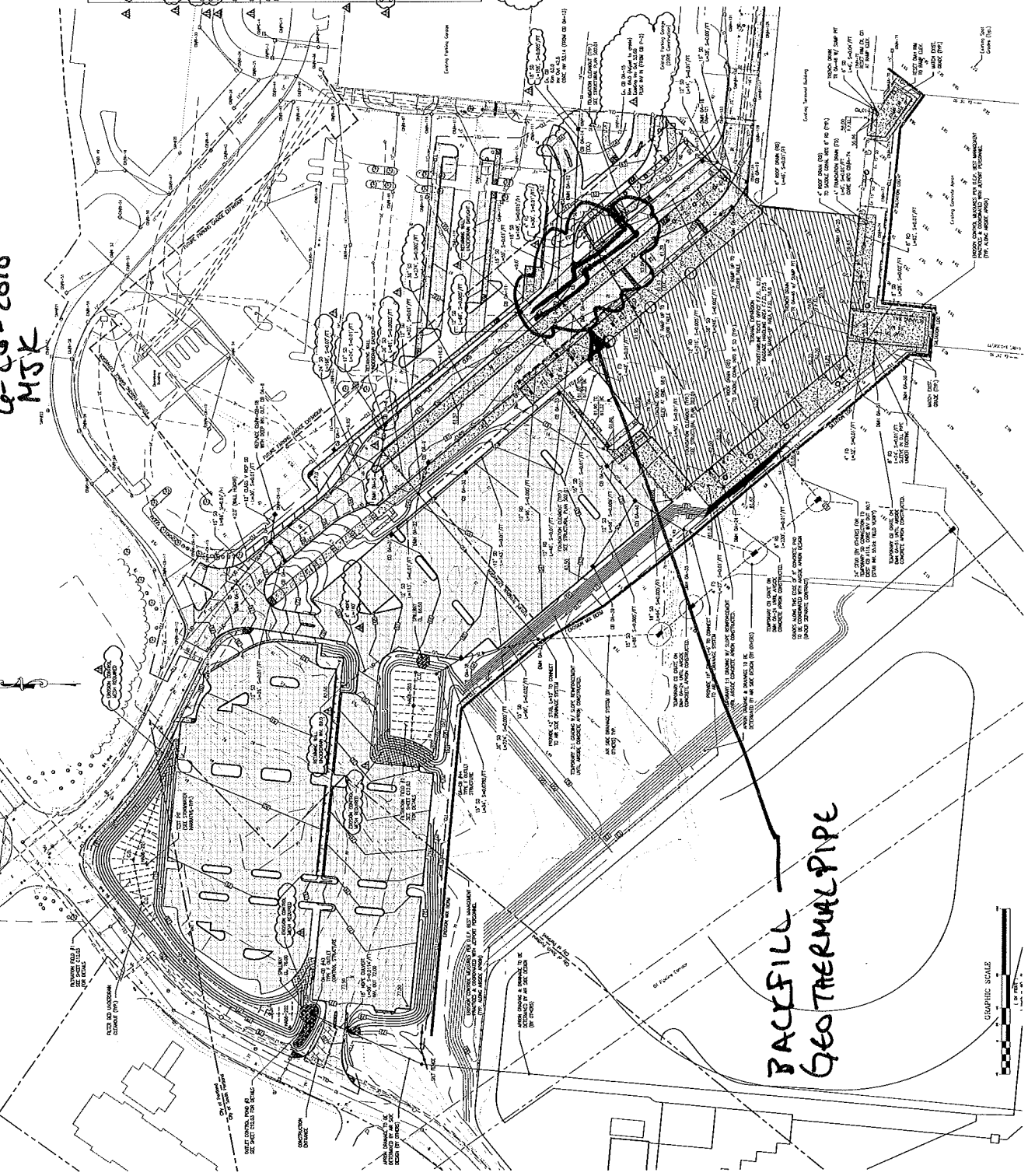
1. SEE PRELIMINARY DRAWINGS FOR DETAILS OF THE WORK.
2. SEE GENERAL NOTES.

Proposed Structure Schedule

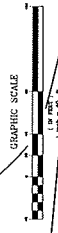
NO.	DESCRIPTION	DATE	BY	CHKD.
001	FOUNDATION	07/27/09	MSK	MSK
002	FOUNDATION	07/27/09	MSK	MSK
003	FOUNDATION	07/27/09	MSK	MSK
004	FOUNDATION	07/27/09	MSK	MSK
005	FOUNDATION	07/27/09	MSK	MSK
006	FOUNDATION	07/27/09	MSK	MSK
007	FOUNDATION	07/27/09	MSK	MSK
008	FOUNDATION	07/27/09	MSK	MSK
009	FOUNDATION	07/27/09	MSK	MSK
010	FOUNDATION	07/27/09	MSK	MSK
011	FOUNDATION	07/27/09	MSK	MSK
012	FOUNDATION	07/27/09	MSK	MSK
013	FOUNDATION	07/27/09	MSK	MSK
014	FOUNDATION	07/27/09	MSK	MSK
015	FOUNDATION	07/27/09	MSK	MSK
016	FOUNDATION	07/27/09	MSK	MSK
017	FOUNDATION	07/27/09	MSK	MSK
018	FOUNDATION	07/27/09	MSK	MSK
019	FOUNDATION	07/27/09	MSK	MSK
020	FOUNDATION	07/27/09	MSK	MSK
021	FOUNDATION	07/27/09	MSK	MSK
022	FOUNDATION	07/27/09	MSK	MSK
023	FOUNDATION	07/27/09	MSK	MSK
024	FOUNDATION	07/27/09	MSK	MSK
025	FOUNDATION	07/27/09	MSK	MSK
026	FOUNDATION	07/27/09	MSK	MSK
027	FOUNDATION	07/27/09	MSK	MSK
028	FOUNDATION	07/27/09	MSK	MSK
029	FOUNDATION	07/27/09	MSK	MSK
030	FOUNDATION	07/27/09	MSK	MSK
031	FOUNDATION	07/27/09	MSK	MSK
032	FOUNDATION	07/27/09	MSK	MSK
033	FOUNDATION	07/27/09	MSK	MSK
034	FOUNDATION	07/27/09	MSK	MSK
035	FOUNDATION	07/27/09	MSK	MSK
036	FOUNDATION	07/27/09	MSK	MSK
037	FOUNDATION	07/27/09	MSK	MSK
038	FOUNDATION	07/27/09	MSK	MSK
039	FOUNDATION	07/27/09	MSK	MSK
040	FOUNDATION	07/27/09	MSK	MSK
041	FOUNDATION	07/27/09	MSK	MSK
042	FOUNDATION	07/27/09	MSK	MSK
043	FOUNDATION	07/27/09	MSK	MSK
044	FOUNDATION	07/27/09	MSK	MSK
045	FOUNDATION	07/27/09	MSK	MSK
046	FOUNDATION	07/27/09	MSK	MSK
047	FOUNDATION	07/27/09	MSK	MSK
048	FOUNDATION	07/27/09	MSK	MSK
049	FOUNDATION	07/27/09	MSK	MSK
050	FOUNDATION	07/27/09	MSK	MSK
051	FOUNDATION	07/27/09	MSK	MSK
052	FOUNDATION	07/27/09	MSK	MSK
053	FOUNDATION	07/27/09	MSK	MSK
054	FOUNDATION	07/27/09	MSK	MSK
055	FOUNDATION	07/27/09	MSK	MSK
056	FOUNDATION	07/27/09	MSK	MSK
057	FOUNDATION	07/27/09	MSK	MSK
058	FOUNDATION	07/27/09	MSK	MSK
059	FOUNDATION	07/27/09	MSK	MSK
060	FOUNDATION	07/27/09	MSK	MSK
061	FOUNDATION	07/27/09	MSK	MSK
062	FOUNDATION	07/27/09	MSK	MSK
063	FOUNDATION	07/27/09	MSK	MSK
064	FOUNDATION	07/27/09	MSK	MSK
065	FOUNDATION	07/27/09	MSK	MSK
066	FOUNDATION	07/27/09	MSK	MSK
067	FOUNDATION	07/27/09	MSK	MSK
068	FOUNDATION	07/27/09	MSK	MSK
069	FOUNDATION	07/27/09	MSK	MSK
070	FOUNDATION	07/27/09	MSK	MSK
071	FOUNDATION	07/27/09	MSK	MSK
072	FOUNDATION	07/27/09	MSK	MSK
073	FOUNDATION	07/27/09	MSK	MSK
074	FOUNDATION	07/27/09	MSK	MSK
075	FOUNDATION	07/27/09	MSK	MSK
076	FOUNDATION	07/27/09	MSK	MSK
077	FOUNDATION	07/27/09	MSK	MSK
078	FOUNDATION	07/27/09	MSK	MSK
079	FOUNDATION	07/27/09	MSK	MSK
080	FOUNDATION	07/27/09	MSK	MSK
081	FOUNDATION	07/27/09	MSK	MSK
082	FOUNDATION	07/27/09	MSK	MSK
083	FOUNDATION	07/27/09	MSK	MSK
084	FOUNDATION	07/27/09	MSK	MSK
085	FOUNDATION	07/27/09	MSK	MSK
086	FOUNDATION	07/27/09	MSK	MSK
087	FOUNDATION	07/27/09	MSK	MSK
088	FOUNDATION	07/27/09	MSK	MSK
089	FOUNDATION	07/27/09	MSK	MSK
090	FOUNDATION	07/27/09	MSK	MSK
091	FOUNDATION	07/27/09	MSK	MSK
092	FOUNDATION	07/27/09	MSK	MSK
093	FOUNDATION	07/27/09	MSK	MSK
094	FOUNDATION	07/27/09	MSK	MSK
095	FOUNDATION	07/27/09	MSK	MSK
096	FOUNDATION	07/27/09	MSK	MSK
097	FOUNDATION	07/27/09	MSK	MSK
098	FOUNDATION	07/27/09	MSK	MSK
099	FOUNDATION	07/27/09	MSK	MSK
100	FOUNDATION	07/27/09	MSK	MSK

GENERAL NOTES

1. ALL WORK SHALL BE IN ACCORDANCE WITH THE LATEST EDITIONS OF THE FOLLOWING CODES AND SPECIFICATIONS:
 - a. AIAA 1000-1000
 - b. AIAA 1000-1000
 - c. AIAA 1000-1000
2. THE CONTRACTOR SHALL BE RESPONSIBLE FOR OBTAINING ALL NECESSARY PERMITS AND APPROVALS FROM THE APPROPRIATE AGENCIES.
3. THE CONTRACTOR SHALL MAINTAIN ACCESS TO ALL EXISTING UTILITIES AND STRUCTURES AT ALL TIMES.
4. THE CONTRACTOR SHALL BE RESPONSIBLE FOR PROTECTING ALL EXISTING UTILITIES AND STRUCTURES.
5. THE CONTRACTOR SHALL MAINTAIN ALL EXISTING UTILITIES AND STRUCTURES AT ALL TIMES.
6. THE CONTRACTOR SHALL BE RESPONSIBLE FOR OBTAINING ALL NECESSARY PERMITS AND APPROVALS FROM THE APPROPRIATE AGENCIES.
7. THE CONTRACTOR SHALL MAINTAIN ACCESS TO ALL EXISTING UTILITIES AND STRUCTURES AT ALL TIMES.
8. THE CONTRACTOR SHALL BE RESPONSIBLE FOR PROTECTING ALL EXISTING UTILITIES AND STRUCTURES.
9. THE CONTRACTOR SHALL MAINTAIN ALL EXISTING UTILITIES AND STRUCTURES AT ALL TIMES.
10. THE CONTRACTOR SHALL BE RESPONSIBLE FOR OBTAINING ALL NECESSARY PERMITS AND APPROVALS FROM THE APPROPRIATE AGENCIES.



BACKFILL
GEO THERMAL PIPE



Portland International
Jetport
1001 Westbrook Street
Portland, Maine 04112

Gensler

MEIST ASSOCIATES, INC.
10000 BROADWAY, SUITE 200
PORTLAND, MAINE 04108
PHONE: 207.733.2227



Project: Terminal Expansion
Date: 07/27/09
Scale: 1/8" = 1'-0"

C02.02
Sheet No.



**SITE WORK
DAILY FIELD REPORT**

PROJECT: Terminal Enhancement at the Portland International Jetport
DATE: 06/27/2010
PROJECT LOCATION: Portland, Maine PROJECT NO.: 557-14
CLIENT: City of Portland WEATHER: Sun
CONTRACTOR: Turner Construction Co.
PREVIOUS DATE ON SITE: 06/26/2010

Time on-site at \checkmark 4 hrs, \checkmark 17 mi travel, Tolls: \$0.00
 \checkmark Nuc. Densometer – 1/2 day (L 500)

AREA 'A'

Upper lot: No work observed.

AREA 'B'

Night Work: Gorham Sand & Gravel installed , connected and backfilled 25' of 12" water main to the connection point in front of the terminal. 5 IPDs taken on backfill material.

AREA 'C'

No work observed.

MJK

Michael Kramlich

Prepared By

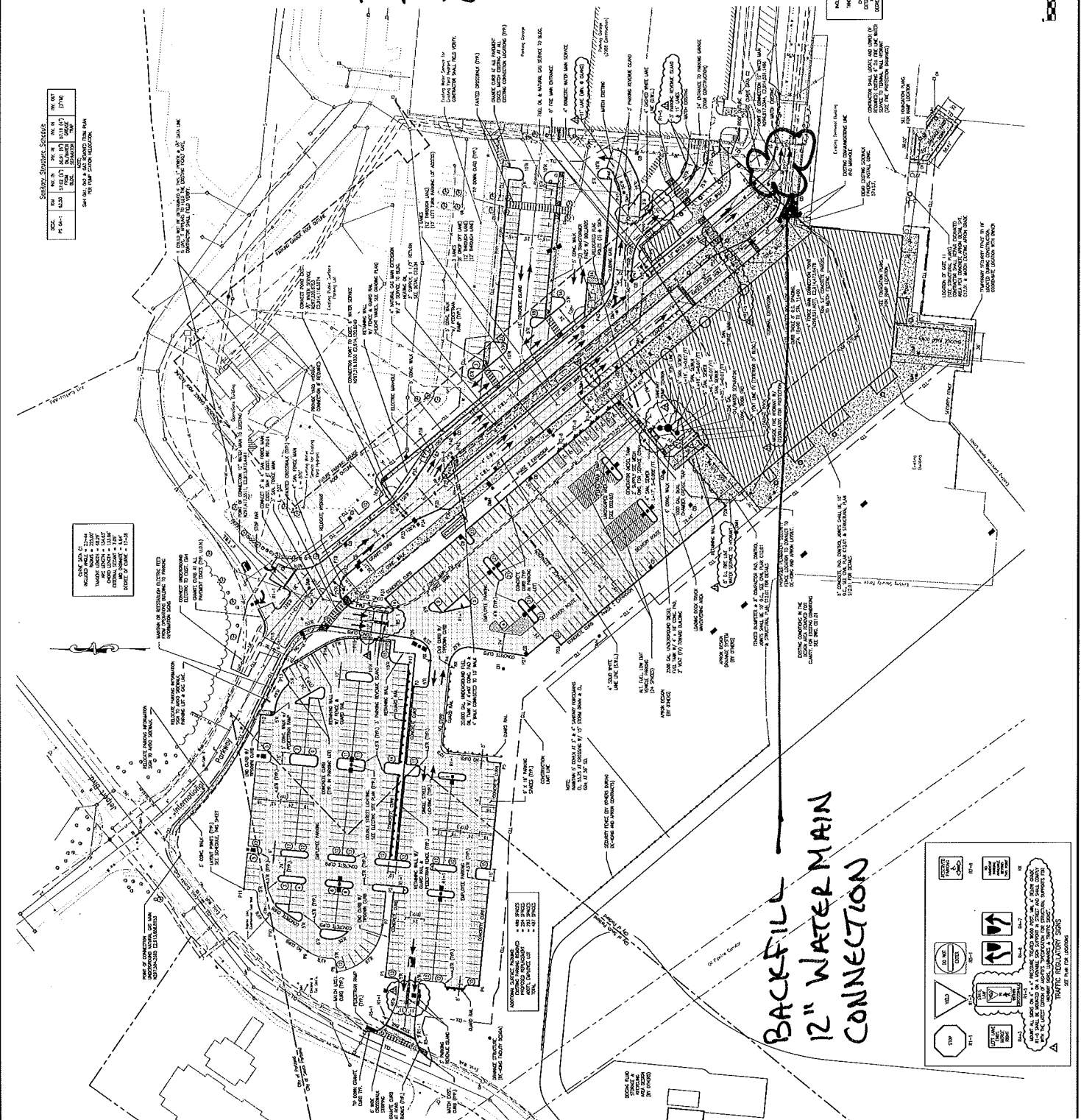
Matthew Grady

Matthew Grady

Reviewed By

R. W. Gillespie & Associates 86 industrial Park Rd., Suite 4, Saco, ME 04072- (207)286-8008

195



Setting, Shading, Grades

SIZE	AS	BS	CS	DS	ES	FS	GS
PI	1/16" = 1'	1/8" = 1'	1/4" = 1'	1/2" = 1'	3/4" = 1'	1" = 1'	1 1/2" = 1'
LINE	SOLID	DASH	DASH	DASH	DASH	DASH	DASH
TYPE	SOLID	DASH	DASH	DASH	DASH	DASH	DASH
SYMBOL	AS	BS	CS	DS	ES	FS	GS
DESCRIPTION	SEE PLAN	SEE PLAN	SEE PLAN	SEE PLAN	SEE PLAN	SEE PLAN	SEE PLAN

Color Key

Color	Symbol	Description
Red	Circle	Center of Circle
Blue	Square	Center of Square
Green	Triangle	Center of Triangle
Yellow	Diamond	Center of Diamond
Purple	Star	Center of Star

Level, Coordinate, Station

Level	Coordinate	Station
100.00	1000000.00	1000000.00
100.01	1000000.01	1000000.01
100.02	1000000.02	1000000.02
100.03	1000000.03	1000000.03
100.04	1000000.04	1000000.04
100.05	1000000.05	1000000.05
100.06	1000000.06	1000000.06
100.07	1000000.07	1000000.07
100.08	1000000.08	1000000.08
100.09	1000000.09	1000000.09
100.10	1000000.10	1000000.10
100.11	1000000.11	1000000.11
100.12	1000000.12	1000000.12
100.13	1000000.13	1000000.13
100.14	1000000.14	1000000.14
100.15	1000000.15	1000000.15
100.16	1000000.16	1000000.16
100.17	1000000.17	1000000.17
100.18	1000000.18	1000000.18
100.19	1000000.19	1000000.19
100.20	1000000.20	1000000.20
100.21	1000000.21	1000000.21
100.22	1000000.22	1000000.22
100.23	1000000.23	1000000.23
100.24	1000000.24	1000000.24
100.25	1000000.25	1000000.25
100.26	1000000.26	1000000.26
100.27	1000000.27	1000000.27
100.28	1000000.28	1000000.28
100.29	1000000.29	1000000.29
100.30	1000000.30	1000000.30
100.31	1000000.31	1000000.31
100.32	1000000.32	1000000.32
100.33	1000000.33	1000000.33
100.34	1000000.34	1000000.34
100.35	1000000.35	1000000.35
100.36	1000000.36	1000000.36
100.37	1000000.37	1000000.37
100.38	1000000.38	1000000.38
100.39	1000000.39	1000000.39
100.40	1000000.40	1000000.40
100.41	1000000.41	1000000.41
100.42	1000000.42	1000000.42
100.43	1000000.43	1000000.43
100.44	1000000.44	1000000.44
100.45	1000000.45	1000000.45
100.46	1000000.46	1000000.46
100.47	1000000.47	1000000.47
100.48	1000000.48	1000000.48
100.49	1000000.49	1000000.49
100.50	1000000.50	1000000.50

Portland International
Jetport
1001 Westbrook Street
Portland, Maine 04102

Gensler

1000 Broadway, New York, NY 10018
Tel: 212 512 2000
Fax: 212 512 2001
Portland: 202 233 2000
Portland: 202 233 2001

meaf ASSOCIATES, INC.
ENGINEERS, ARCHITECTS, PLANNERS, CONSTRUCTION MANAGEMENT

**PORTLAND INT'L AIRPORT
TERMINAL EXPANSION
557-14
6-27-10
MSK**

NIGHT WORK

- GENERAL NOTES**
1. ALL CONSTRUCTION SHALL BE IN ACCORDANCE WITH THE LATEST EDITIONS OF THE INTERNATIONAL BUILDING CODE (IBC) AND THE INTERNATIONAL PLUMBING CODE (IPC).
 2. ALL CONSTRUCTION SHALL BE IN ACCORDANCE WITH THE LATEST EDITIONS OF THE INTERNATIONAL ELECTRICAL CODE (NEC) AND THE INTERNATIONAL FIRE CODE (IFC).
 3. ALL CONSTRUCTION SHALL BE IN ACCORDANCE WITH THE LATEST EDITIONS OF THE INTERNATIONAL MECHANICAL CODE (IMC) AND THE INTERNATIONAL MECHANICAL AND PLUMBING EXAMINER'S HANDBOOK (IMPEH).
 4. ALL CONSTRUCTION SHALL BE IN ACCORDANCE WITH THE LATEST EDITIONS OF THE INTERNATIONAL SOIL AND FOUNDATION CODE (ISFC) AND THE INTERNATIONAL FOUNDATION EXAMINER'S HANDBOOK (IFEH).
 5. ALL CONSTRUCTION SHALL BE IN ACCORDANCE WITH THE LATEST EDITIONS OF THE INTERNATIONAL SAFETY CODE (ISC) AND THE INTERNATIONAL SAFETY EXAMINER'S HANDBOOK (ISEH).
 6. ALL CONSTRUCTION SHALL BE IN ACCORDANCE WITH THE LATEST EDITIONS OF THE INTERNATIONAL TRANSPORTATION CODE (ITC) AND THE INTERNATIONAL TRANSPORTATION EXAMINER'S HANDBOOK (ITEH).
 7. ALL CONSTRUCTION SHALL BE IN ACCORDANCE WITH THE LATEST EDITIONS OF THE INTERNATIONAL AIRPORT CODE (IAC) AND THE INTERNATIONAL AIRPORT EXAMINER'S HANDBOOK (IAEH).

GRAPHIC SCALE
1" = 100'

C02.01

DATE: 6/27/10
DRAWN BY: MSK
CHECKED BY: [Signature]
APPROVED BY: [Signature]