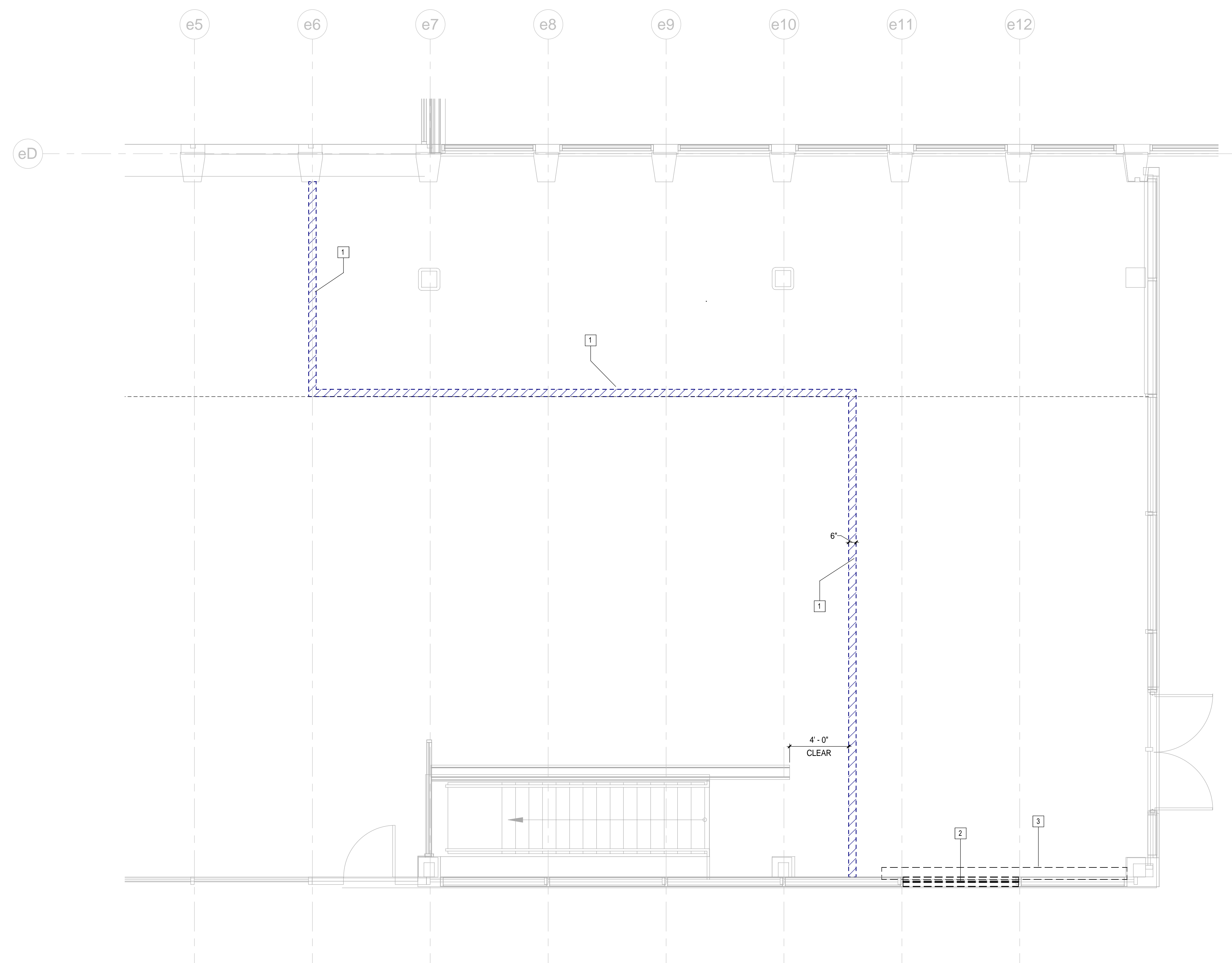


DEMO KEY NOTES

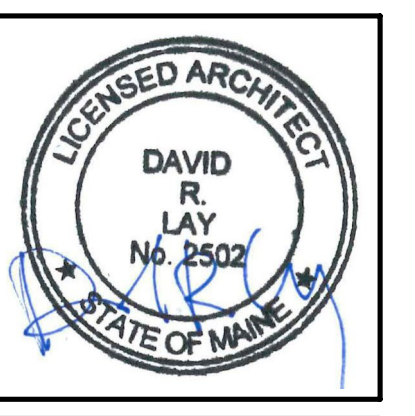
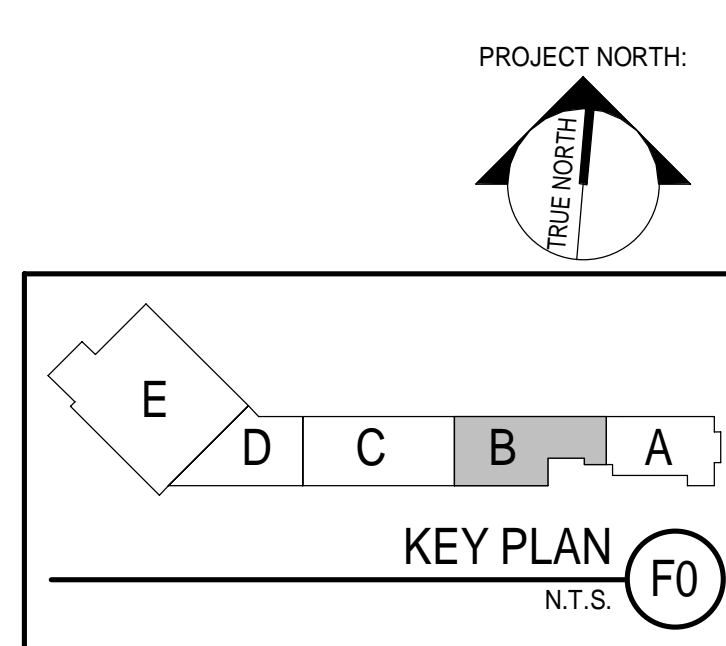
1. ERECT POLYETHYLENE FACED PARTITION AT PROJECT START
2. REMOVE CURTAINWALL FOR NEW DOOR
3. MODIFY RADIATOR, RE: MECH
4. SALVAGE LIGHTING FIXTURE, RE: ELEC.
5. EXISTING CEILING TO REMAIN/BE RECONFIGURED.
6. PROTECT CEILING ASSEMBLIES TO REMAIN FROM DAMAGE DUE TO CONSTRUCTION ACTIVITY.

DEMO NOTES

1. DO NOT SCALE DRAWINGS.
2. FIELD VERIFY ALL DIMENSIONS AND LAYOUT PRIOR TO PROCEEDING WITH WORK. NOTIFY ARCHITECT IN WRITING OF ANY DISCREPANCIES OR INCONSISTENCIES. FAILURE TO REPORT ANY DISCREPANCIES WITHING THESE CONSTRUCTION DOCUMENTS TO THE ARCHITECT WILL NOT BE GROUNDS FOR ADDITIONAL COST OR CHANGE ORDERS.
3. COORDINATE EXTENT OF DEMOLITION WITH LOCATIONS OF PARTITIONS DESCRIBED ON PLANS AND WITH LOCATIONS OF FINISHES NOTED AS EXISTING TO REMAIN.
4. ANY WALL, PARTITION, OR SURFACE DISTURBED BECAUSE OF NEW WORK OR DEMOLITION SHALL BE PATCHED AND FINISHED CONTINUOUSLY TO THE NEAREST CORNER UNLESS NOTED OTHERWISE. MATCHED EXISTING ADJACENT CONSTRUCTION FINISHES, CONTINUITY AND FIRE RATINGS UNLESS NOTED OTHERWISE.
5. PROTECT ALL FINISHES, MATERIALS, AND EQUIPMENT NOTED AS EXISTING TO REMAIN. CONTRACTOR SHALL BE RESPONSIBLE TO REPLACES ALL FINISHES, MATERIALS, AND EQUIPEMNTN DAMAGED DURING CONSTRUCTION.
6. DIMENSIONS INDICATED WITH A ± ARE EXISTING CONDITION AND NEED TO BE VERIFIED IN FIELD.
7. CONTRACTOR TO HOLD A PRE-DEMOLITION MEETING WITH OWNER, CONSTRUCTION MANAGER, SUB-CONTRACTORS, ETC. PRIOR TO BEGINNING DEMOLITION WORK TO REVIEW JETPORT POLICIES, NOISE CONTROL MEASURES, ETC.
8. CLEARLY IDENTIFY AND TAG MECHANICAL, PLUMBING AND ELECTRICAL FIXTURES OR EQUIPMENT THAT ARE STILL IN USE PRIOR TO DEMOLITION TO AVOID ACCIDENTAL REMOVAL.
9. SEE MECHANICAL, AND ELECTRICAL DRAWINGS FOR THE SCOPE OF DEMOLITION IN THOSE DISCIPLINES.



1 2ND FLOOR - 1 DEMO PLAN
1/4" = 1'-0"



ARCHITECTURE 144 Fore Street, P.O. Box 618
Portland, Maine 04104
Tel: (207) 772-3846
Fax: (207) 772-1070
www.smlinc.com

ENGINEERING
PLANNING
INTERIORS
ENERGY

SMRT PROJECT NO. 17033

PROJECT MGR JCDRAWIN A/E OF RECORD
Author
DRL
Checker

REV.	BY:	DATE:	ISSUED FOR CONSTRUCTION STATUS:
0		12/21/17	

THIS PLAN SHALL NOT BE MODIFIED WITHOUT WRITTEN PERMISSION FROM SEBAGO TECHNICS, INC. ANY CHANGES SHALL BE AT THE USER'S SOLE RISK AND WITHOUT LIABILITY TO SEBAGO TECHNICS, INC.

SEBAGO
TECHNICS

WWW.SEBAGOTECHNICS.COM
75 John Roberts Rd. - Suite 1A
South Portland, ME 04086
Tel: (207) 772-3846
Fax: (207) 772-1070

PROJECT NO. | FIELD BOOK | DESIGN | CHKD | DRAWN

2ND FLOOR - DEMO PLAN
OF:
PORTLAND INTERNATIONAL JETPORT
GATE UPGRADES
1001 WESTBROOK STREET
PORTLAND, MAINE 04102

DATE	SCALE
12/21/17	As indicated

1.AD102