

ARCHITECTURE 144 Fore Street P.O. Box 618
 Portland, Maine 04104
 Tel: (207) 775-3646
 Fax: (207) 775-1070
 www.smrtinc.com

SMART
 INTERIORS
 ENERGY

PROJECT NO. 17033 PROJECT MGR JCDRAWN JAE OF RECORD
 DRL JC KOD

ISSUED FOR CONSTRUCTION
 STATUS: 12/21/17 DATE: 12/21/17
 REV: 0 BY: 12/21/17

THIS PLAN SHALL NOT BE MODIFIED WITHOUT WRITTEN PERMISSION FROM SEBAGO TECHNICAL SERVICES, INC.
 USER'S LIABILITY AND WITHOUT LIABILITY TO SEBAGO TECHNICAL SERVICES, INC.

SEBAGO
 TECHNICAL SERVICES
 WWW.SEBAGOTECHNICALSERVICES.COM
 75 John Roberts Rd., Suite 1A 250 Goodland Rd., Suite B
 South Portland, ME 04106 Lewiston, ME 04240
 Tel: (207) 775-3646 Fax: (207) 775-1070

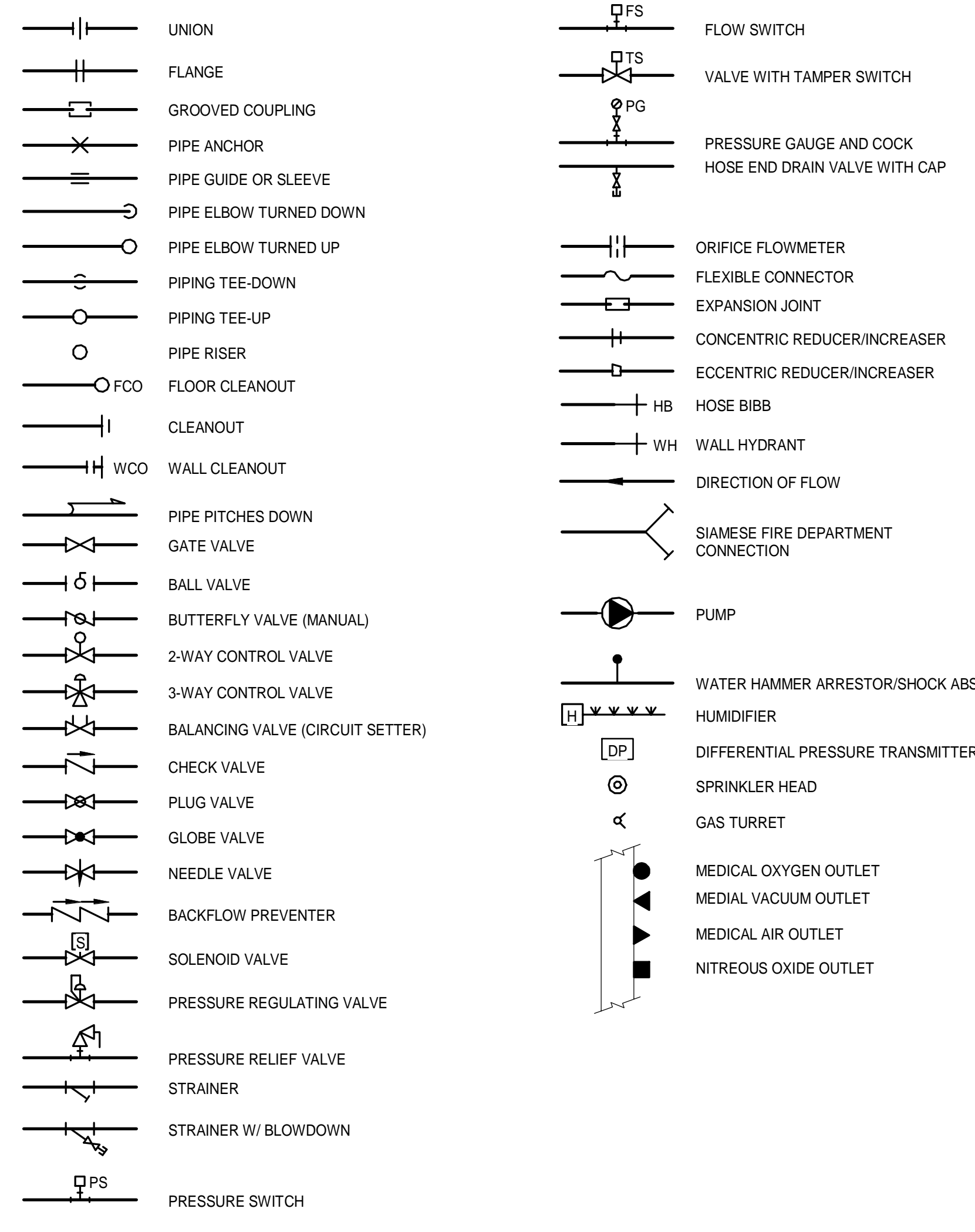
PROJECT NO. 17033 FIELD BOOK DESIGN CHKD DRAWN

PLUMBING AND FIRE PROTECTION LEGEND
 OF:
VERTICAL CIRCULATION IMPROVEMENTS
 1001 WESTBROOK STREET
 PORTLAND, MAINE 04102

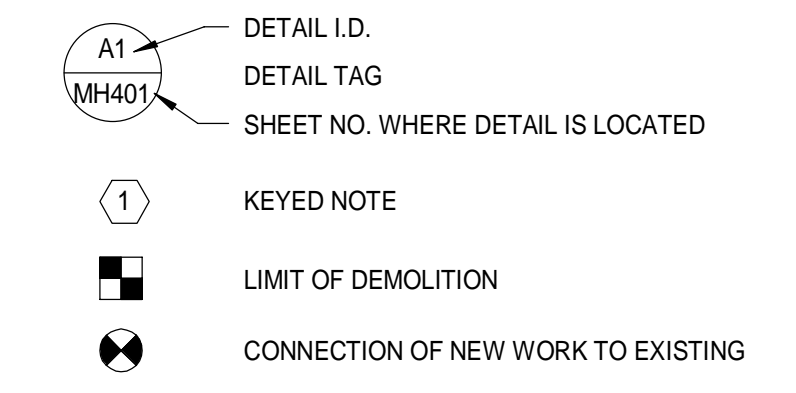
DATE 12/21/17 SCALE NOT TO SCALE

2.PL001

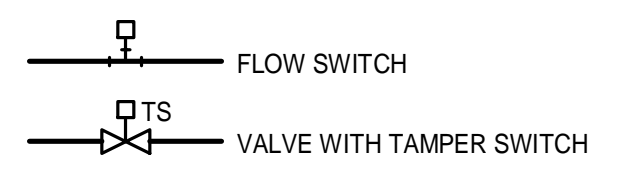
PIPING SYMBOLS



GENERAL SYMBOLS



FIRE PROTECTION SYMBOLS



ABBREVIATIONS

AAV AUTOMATIC AIR VENT	DWV DRAINAGE, WASTE AND VENT	PPE PREPURCHASED EQUIPMENT
AD ACCESS DOOR	ENC ENCLOSURE	PRS PRESSURE REDUCING STATION
AFF ABOVE FINISHED FLOOR	(E) EXISTING	PRV PRESSURE REDUCING VALVE
AHU AIR HANDLING UNIT	EXIST. EXISTING	(R) REMOVE
ATC AUTOMATIC TEMPERATURE CONTROL	FBO FURNISHED BY OWNER	(REL.) RELOCATE
AV AIR VENT	FC FLEXIBLE CONNECTOR	RD ROOF DRAIN
BA BREATHING COMPRESSED AIR	FCO FLOOR CLEANOUT	RHC REHEAT COIL
BFP BACKFLOW PREVENTER	FD# FLOOR DRAIN TAG	RM ROOM
BLDGBUILDING	FG FIBERGLASS	RPZ REDUCED PRESSURE ZONE BFP
BOD BOTTOM OF DUCT	FRHBFREEZE RESISTANT HOSE BIBB	RV RELIEF VALVE
BOP BOTTOM OF PIPE	FS FLOW SWITCH	SCV SELF CONTAINED VALVE
BTU BRITISH THERMAL UNIT	GC GENERAL CONTRACTOR	SPK SPRINKLER
CFF CAPPED FOR FUTURE	GPM GALLONS PER MINUTE	SS STAINLESS STEEL
CFH CUBIC FEET PER MINUTE	H HUMIDIFIER	TE TEMPERATURIZED ELEMENT (SENSOR)
CLG CEILING	HB HOSE BIBB	TOP TOP OF PIPE
CO CLEANOUT	HRU HEAT RECOVERY UNIT	TTS TIGHT TO STEEL
CONT CONTINUATION	HTR HEATER	TYP TYPICAL
COORD COORDINATION	H & V HEATING AND VENTILATING	UICUP IN CHASE
CT COOLING TOWER	HVAC HEATING, VENTILATING AND AIR CONDITIONING	UIW UP IN WALL
CTE CONNECT TO EXISTING	HW HOT WATER	UV UNIT VENTILATOR
CU COPPER	HX HEAT EXCHANGER	VB VACUUM BREAKER
CV CONTROL VALVE	IN WG INCHES WATER GAUGE	VTR VENT THROUGH ROOF
CWCOLD WATER	MAU MAKEUP AIR UNIT	VCF VALVED AND CAPPED FOR FUTURE
CW-PCITY WATER-PROCESS	MAX MAXIMUM	VFD VARIABLE FREQUENCY DRIVE
DC DOUBLE CONTAINED	MBH 1000 BTU/HR	VOC VOLITILE ORGANIC COMPOUND
DCO DANDY CLEANOUT	ME MECHANICAL ENGINEER	W/ WITH
DDC DIRECT DIGITAL CONTROL	MFR MANUFACTURER	W&T WASTE AND TRAP
DIA DIAMETER	MIN MINIMUM	WCO WALL CLEANOUT
DICDOWN IN CHASE	MPV MULTI-PURPOSE VALVE	WHWALL HYDRANT
DIW DOWN IN WALL	MTD MOUNTED	ZVB ZONE VALVE BOX
DN DOWN	MUA MAKE UP AIR	
DS DOWNSPOUT	NPW NON-POTABLE WATER	
DT DROP AND TRANSITION	NTS NOT TO SCALE	
DWG DRAWING	P# PLUMBING FIXTURE TAG	
DWH DOMESTIC WATER HEATER	PP POLYPROPYLENE	

PIPING SYSTEMS

AV ACID VENT	MV MEDICAL VACUUM	TEMP DOMESTIC HOT WATER (TEMP DEG. F)
AD ACID DRAIN	N2NP NON-PROCESS NITROGEN	TEMP RECIRC. DOMESTIC HOT WATER (TEMP DEG. F)
AD ACID DRAIN (BELOW SLAB)	N2 NITROGEN	CW DOMESTIC COLD WATER
BA BREATHING AIR	NG NATURAL GAS	HW DOMESTIC HOT WATER
CD CONDENSATE DRAIN	HNG HIGH PRESSURE NATURAL GAS	RHW RECIRCULATED DOMESTIC HOT WATER
CDA COMPRESSED DRY AIR	NO2 NITROUS OXIDE	S, W or KW (S) SANITARY, (W) WASTE & (KW) KITCHEN WASTE
DB DISTRIBUTION VALVE BOX	NEG. SOLV. NEGATIVE SOLVENT DRAIN	S, W or KW (S) SANITARY, (W) WASTE & (KW) KITCHEN WASTE (EXISTING)
DIS DEIONIZED WATER SUPPLY	NPW NON POTABLE COLD WATER	S, W or KW (S) SANITARY, (W) WASTE & (KW) KITCHEN WASTE (BELOW SLAB)
DIR DEIONIZED WATER RETURN	O2 OXYGEN	S, W or KW (S) SANITARY, (W) WASTE & (KW) KITCHEN WASTE (BELOW SLAB-EXIST.)
EXCD EXC DRAIN	OFA OIL FREE COMPRESSED AIR	SD STORM DRAIN
ESEW EYEWASH	PD PUMPED DISCHARGE	SD STORM DRAIN (EXISTING)
GLY GLYCOL	POS. SOLV. POSITIVE SOLVENT DRAIN	SD STORM DRAIN (BELOW SLAB)
GV GAS VENT	PW POTABLE WATER	SD STORM DRAIN (BELOW SLAB - EXIST.)
H HYDROGEN	R RELIEF LINE	V SANITARY VENT
H2O2 HYDROGEN PEROXIDE	SLD MIXED SOLVENT DRAIN	V SANITARY VENT (EXISTING)
HCV HOUSE CLEAN VACUUM	SV SOLVENT	V SANITARY VENT (BELOW SLAB)
IAD ISOPROPYL ALCOHOL DRAIN	SPK SPRINKLER	V SANITARY VENT (BELOW SLAB - EXIST.)
LP LIQUID PROPANE GAS	VAC VACUUM	
HLP HIGH PRESSURE LIQUID PROPANE GAS	ZB ZONE VALVE BOX	
MA MEDICAL AIR		

GENERAL NOTE:
 1. ALL GENERAL NOTES, SYMBOL LISTS, AND DETAILS ARE TO BE CONSIDERED AS APPLICABLE TO ALL PLUMBING DRAWINGS FOR THIS PROJECT. SYMBOLS AND ABBREVIATIONS SHOWN ON THIS SHEET ARE FOR REFERENCE ONLY AND DO NOT INDICATE THEIR INCORPORATION INTO THE DESIGN.