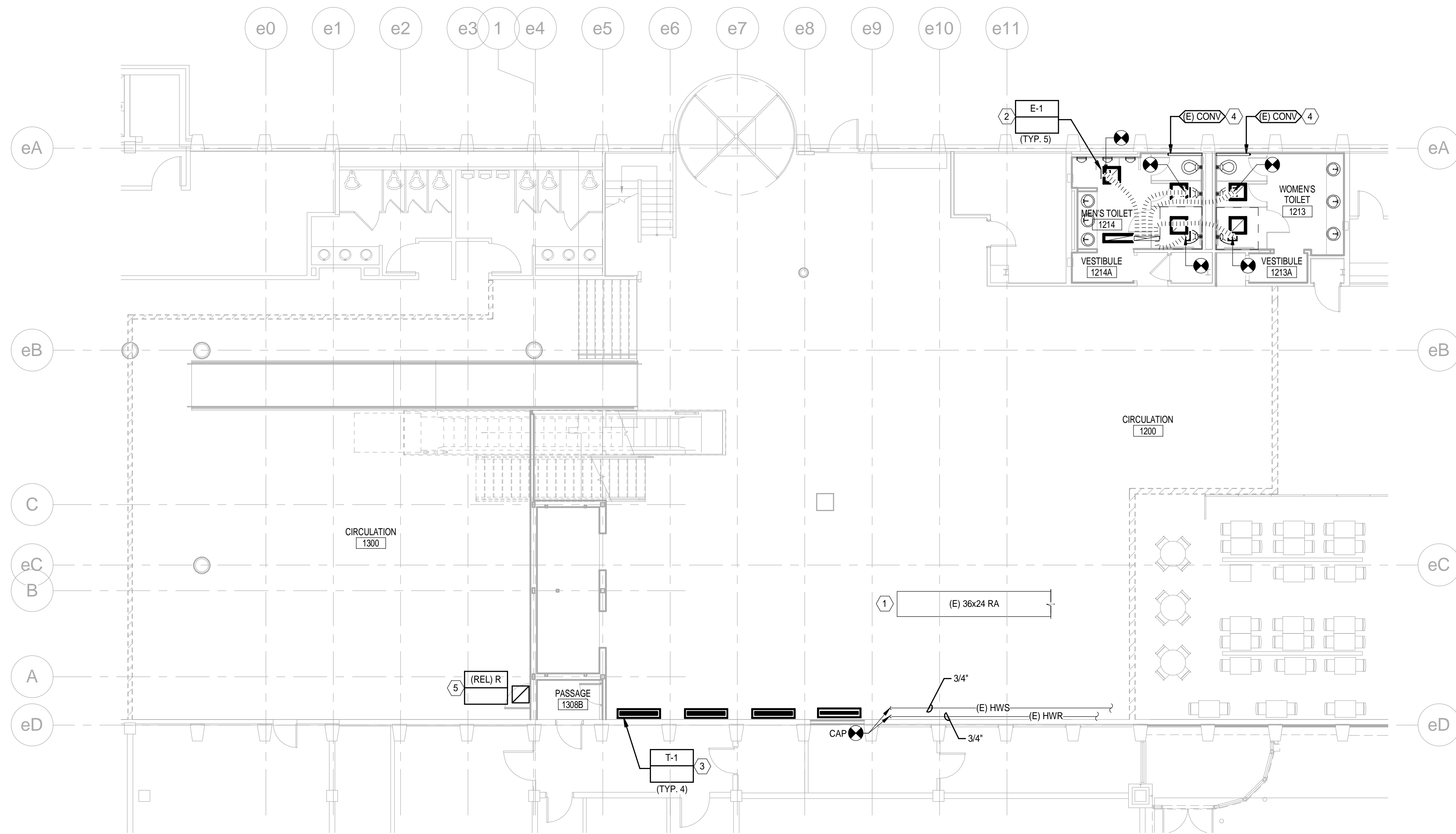


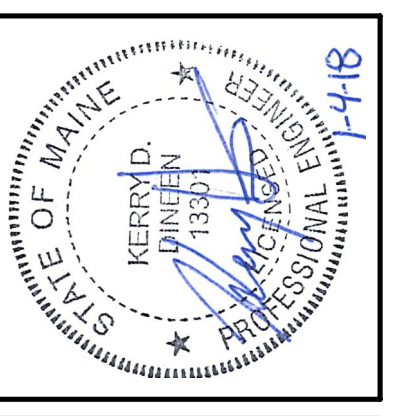
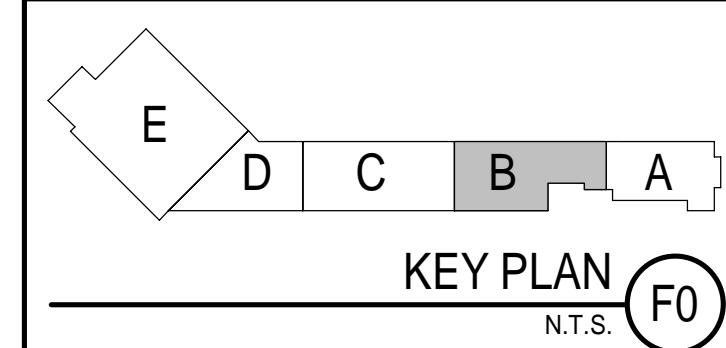
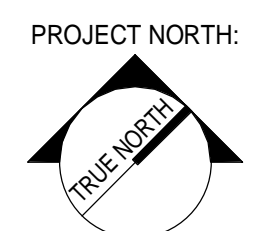
**GENERAL NOTES**

1. SEE SHEET M-001 FOR LEGEND AND ABBREVIATIONS.

KEYNOTE	KEYNOTE DESCRIPTION
1	PROVIDE OED WITH 1/2" WMS.
2	CONNECT TO EXISTING DUCT CONNECTIONS AND TRANSITION AT GRILLE AS REQUIRED. BALANCE TO AIR FLOW DETERMINED DURING PRE-CONSTRUCTION TAB.
3	TRANSFER GRILLES TO BE LOCATED IN FLOOR OF NEW RAISE FLOOR AREA.
4	PROVIDE NEW CONVECTOR ENCLOSURE OF HEAVY DUTY CORROSION RESISTANT STEEL TO MATCH EXISTING. 36" W X 3-1/2" DEEP X 18" TALL WITH STAMPED FRONT (TOP AND BOTTOM) INLETS AND OUTLETS. EXTEND ENCLOSURE AN ADDITIONAL 12" TO PROVIDE FLUSH FINISH TO WALL AND ACCESS.
5	NEW LOCATION OF RELOCATED RETURN GRILLE.



**1** 1ST FLOOR - HVAC DUCTWORK PLAN - GATE UPGRADES  
1/8" = 1'-0"



ARCHITECTURE 144 Fore Street P.O. Box 618  
Portland, Maine 04104  
tel. (207) 775-3646  
fax. (207) 775-1070  
www.smrtinc.com

ENGINEERING  
INTERIORS  
ENERGY

SMRT PROJECT NO. 17033  
PROJECT MGR JCDRAWN  
JC  
DRL  
AE OF RECORD  
KOD

REV.	BY:	DATE:	ISSUED FOR CONSTRUCTION
0		12/21/17	STATUS: DATE: 12/21/17

THIS PLAN SHALL NOT BE MODIFIED WITHOUT WRITTEN PERMISSION FROM SEBAGO TECHNICS, INC.  
USERS ASSUME RISK AND WITHOUT LIABILITY TO SEBAGO TECHNICS, INC.

**SEBAGO**  
TECHNICS

WWW.SEBAGOTECHNICS.COM  
75 John Roberts Rd., Suite 1A  
South Portland, ME 04086  
Tel: (207) 202-1100  
Fax: (207) 775-5660

PROJECT NO. | FIELD BOOK | DESIGN | CHKD | DRAWN

1ST FLOOR HVAC DUCTWORK PLAN  
OF:  
VERTICAL CIRCULATION IMPROVEMENTS  
1001 WESTBROOK STREET  
PORTLAND, MAINE 04102

DATE	SCALE
12/21/17	1/8" = 1'-0"

2.MH101