

**GENERAL NOTES**

1. SEE SHEET PL001 FOR LEGEND AND ABBREVIATIONS.

KEYNOTE	KEYNOTE DESCRIPTION
1	EXTEND EXISTING SPRINKLER SYSTEM TO PROVIDE COVERAGE THROUGHOUT AREA OF RENOVATION.
2	CONNECT 1/2" CW, 1/2" HW, AND 1-1/2" W TO EXISTING POROVIOSIONS IN WALL.
3	CONNECT 3/4" CW, 2" V AND, 2" S TO EXISTING PROVISIONS IN WALL. MODIFY AND REWORK EXISTING DWV AS REQUIRED FOR NEW FIXTURE LOCATIONS.
4	CONNECT 1-1/4" CW, 4" S AND, 2" V TO EXISTING PROVISIONS IN CHASE. MODIFY AND RE-WORK EXISTING DWV SYSTEM AS REQUIRED FOR INSTALLATION OF NEW CARRIERS.



ARCHITECTURE 144 Fore Street P.O. Box 618  
 Portland, Maine 04104  
 TEL: (207) 775-3646  
 FAX: (207) 775-1070  
 WWW.SMRTINC.COM

**SMRT**  
 INTERIORS  
 ENERGY

PROJECT NO. 17033  
 PROJECT MGR. JCDRAWN  
 JC  
 AE OF RECORD  
 DRL  
 KOD

ISSUED FOR CONSTRUCTION	DATE: 12/21/17
STATUS:	BY:
REV: 0	DATE:

THIS PLAN SHALL NOT BE MODIFIED WITHOUT WRITTEN PERMISSION FROM SEBAGO TECHNICS, INC.  
 USERS ASSUME RISK AND WITHOUT LIABILITY TO SEBAGO TECHNICS, INC.

**SEBAGO**  
 TECHNICS

WWW.SEAGOTECHNICS.COM  
 75 John Roberts Rd., Suite 1A  
 South Portland, ME 04086  
 Tel: (207) 200-2100  
 Fax: (207) 735-5660

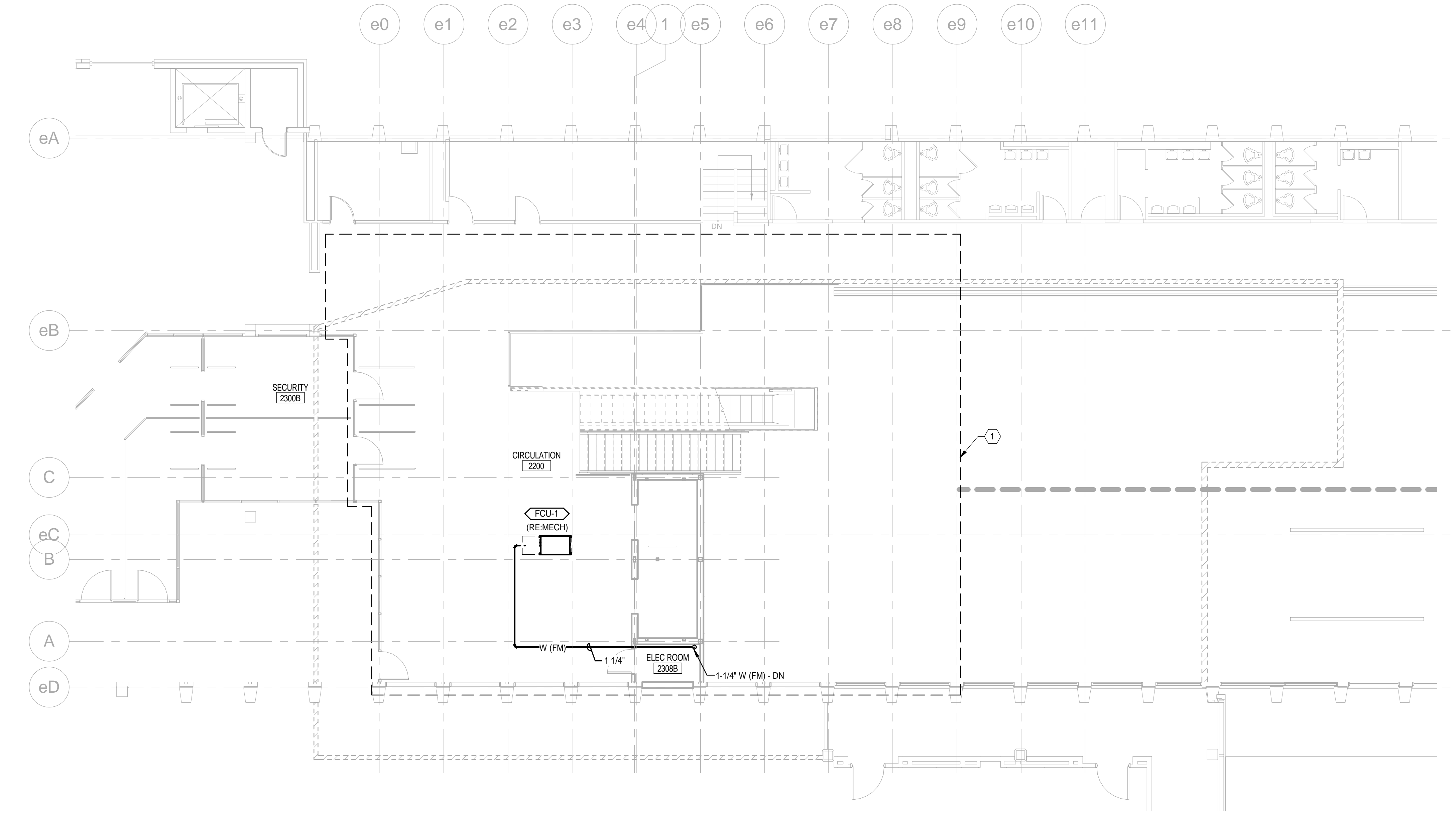
PROJECT NO. 17033  
 FIELD BOOK  
 DESIGN  
 CHKD  
 DRAWN

2ND FLOOR PLUMBING AND FIRE PROTECTION  
 PLAN OF:  
 VERTICAL CIRCULATION IMPROVEMENTS

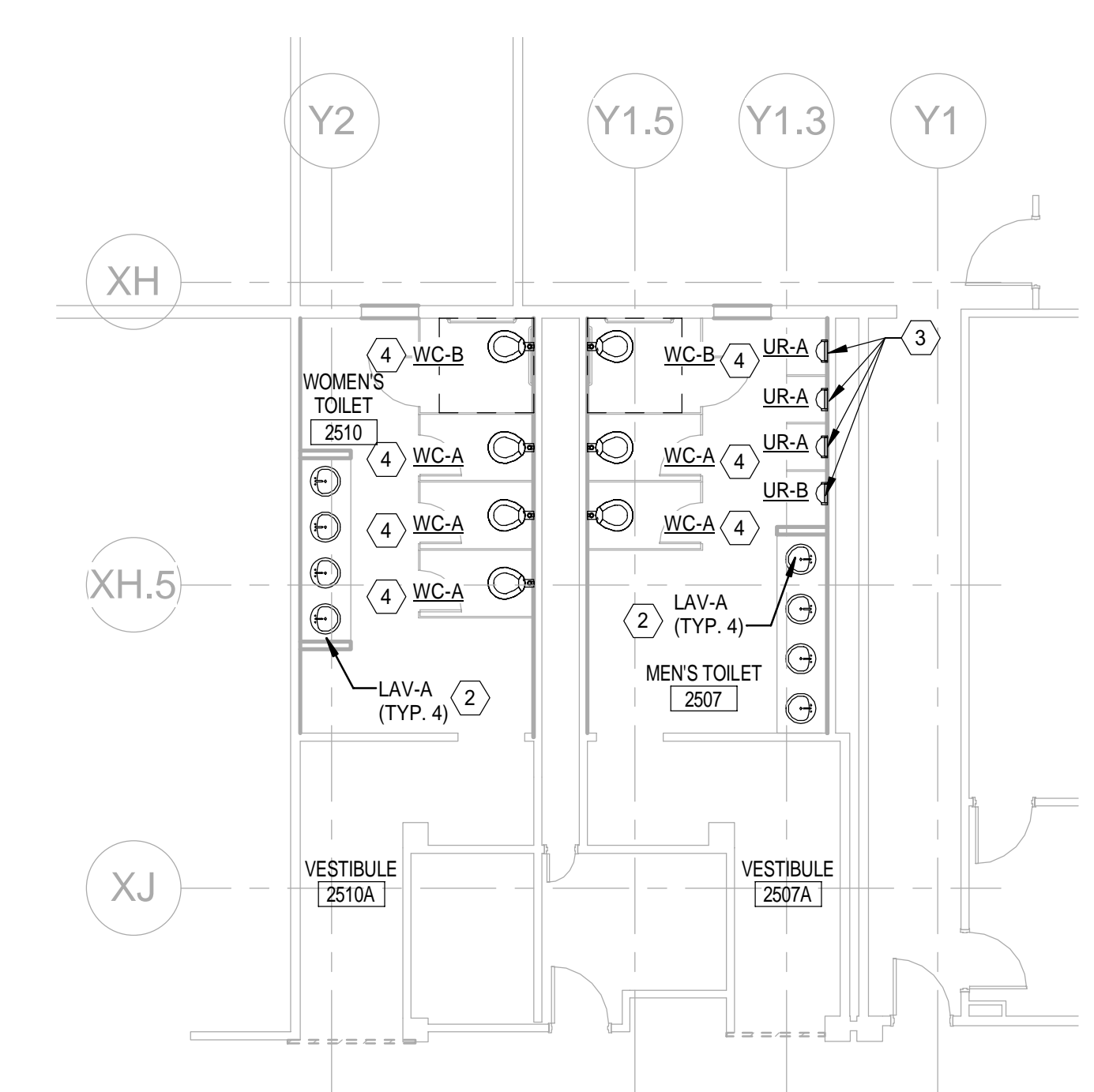
1001 WESTBROOK STREET  
 PORTLAND, MAINE 04102

DATE	SCALE
12/21/17	1/8" = 1'-0"

2.PL102



2 2ND FLOOR - PLUMBING AND FIRE PROTECTION PLAN  
 1/8" = 1'-0"



1 2ND FLOOR - PLUMBING RESTROOM PLAN  
 1/8" = 1'-0"

