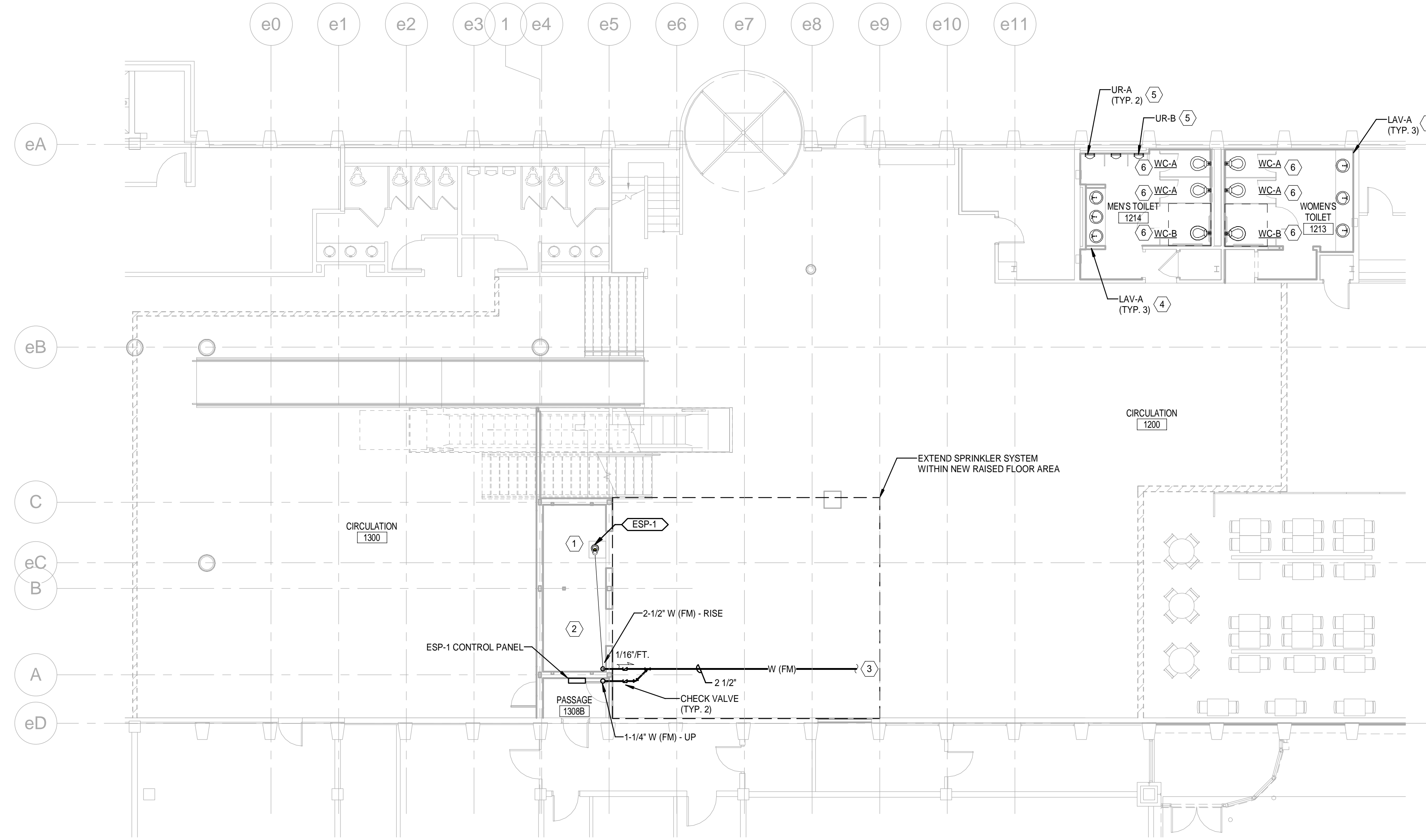


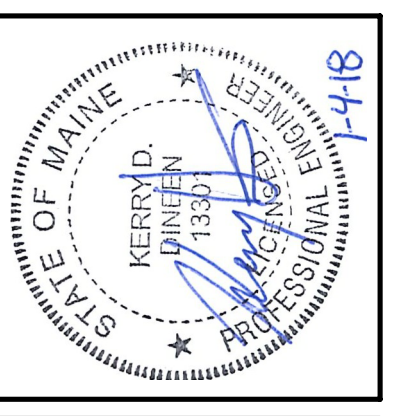
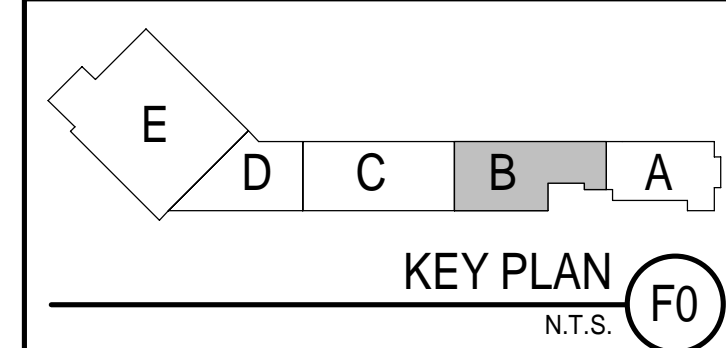
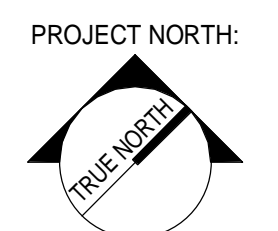
GENERAL NOTES

1. SEE SHEET PL001 FOR LEGEND AND ABBREVIATIONS.

KEYNOTE	KEYNOTE DESCRIPTION
1	2-1/2" W (FM) - RISE. PROVIDE WITH GATE VALVE AND CHECK VALVE AT PUMP RISER.
2	COORDINATE EXACT LOCATION AND PENETRATIONS OF ITEMS IN ELEVATOR PIT AND ELEVATOR SHAFT WITH ELEVATOR EQUIPMENT AND EQUIPMENT MANUFACTURER TO ENSURE UNOBSTRUCTED OPERATION OF ELEVATOR.
3	EXTEND 2-1/2" FORCED MAIN (APPROXIMATELY 100' AWAY) TO MECHANICAL ROOM AND TERMINATE AT (E) 6".
4	CONNECT 1/2" CW, 1/2" HW, AND 1-1/2" W TO EXISTING PROVISIONS IN WALL.
5	CONNECT 3/4" CW, 2" V AND, 2" S TO EXISTING PROVISIONS IN WALL. MODIFY AND REWORK EXISTING DWV AS REQUIRED FOR NEW FIXTURE LOCATIONS.
6	CONNECT 1-1/4" CW, 4" S AND, 2" V TO EXISTING PROVISIONS IN CHASE. MODIFY AND RE-WORK EXISTING DWV SYSTEM AS REQUIRED FOR INSTALLATION OF NEW CARRIERS.



1 1ST FLOOR - PLUMBING AND FIRE PROTECTION PLAN
1/8" = 1'-0"



ARCHITECTURE 144 Fore Street, P.O. Box 618
Portland, Maine 04104
Tel: (207) 775-3646
Fax: (207) 775-1070
www.smartinc.com

ENGINEERING
INTERIORS
ENERGY

PROJECT NO. 17033
PROJECT MGR. JCDRAWN
DR. JC
DATE OF RECORD
KOD

REV.	BY:	DATE:	ISSUED FOR CONSTRUCTION
0		12/21/17	STATUS: THIS PLAN SHALL NOT BE MODIFIED WITHOUT WRITTEN PERMISSION FROM SEBAGO TECHNICS, INC. ISSUES ARE RISK AND WITHOUT LIABILITY TO SEBAGO TECHNICS, INC.

SEBAGO TECHNICS
WWW.SEBAGOTECHNICS.COM
75 John Roberts Rd. - Suite 1A
South Portland, ME 04106
Tel: (207) 200-2100
Fax: (207) 775-3646

PROJECT NO. | FIELD BOOK | DESIGN | CHKD | DRAWN

1ST FLOOR PLUMBING AND FIRE PROTECTION PLAN
OF:
VERTICAL CIRCULATION IMPROVEMENTS
1001 WESTBROOK STREET
PORTLAND, MAINE 04102

DATE	SCALE
12/21/17	1/8" = 1'-0"

2.PL101