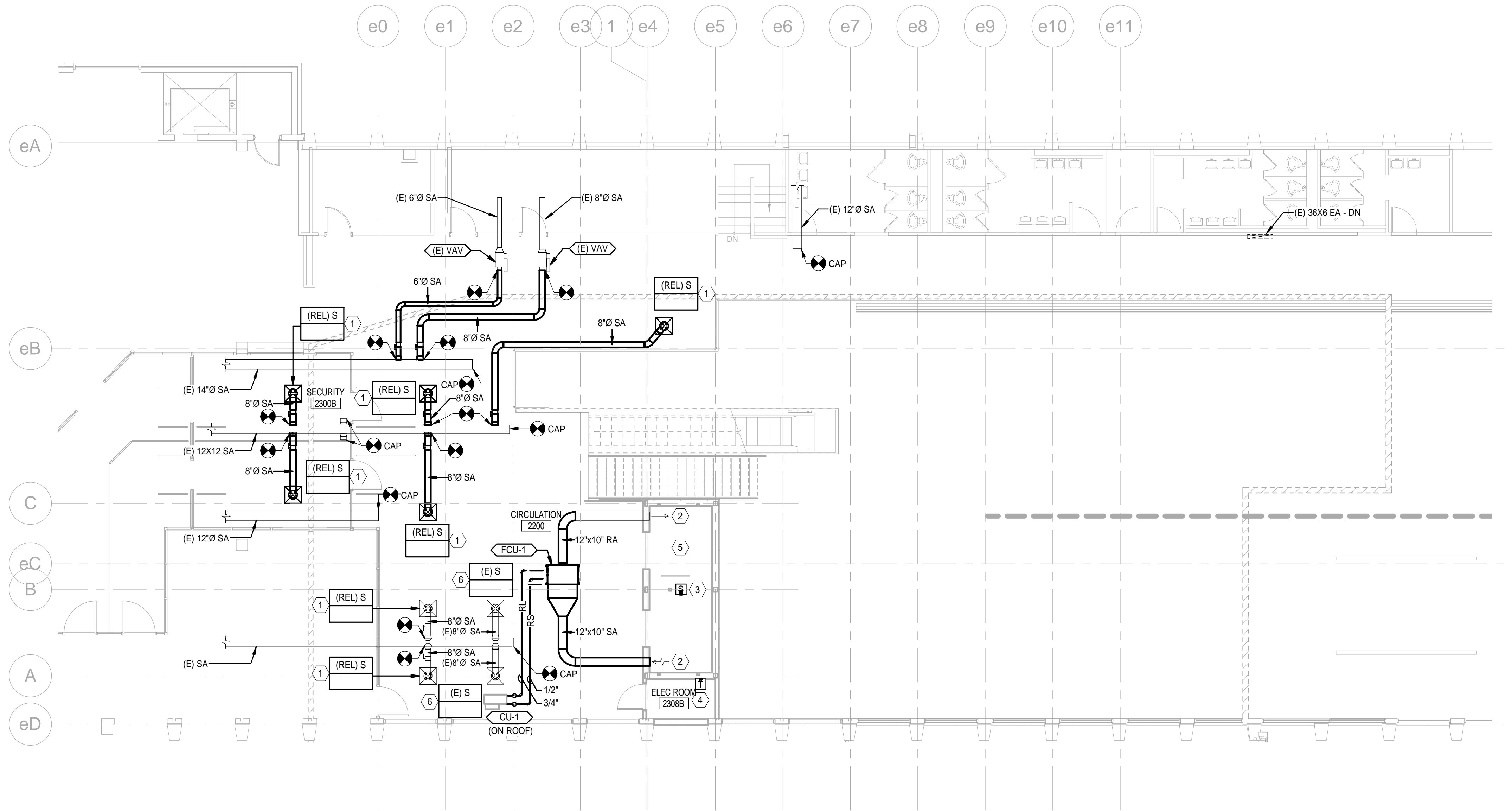


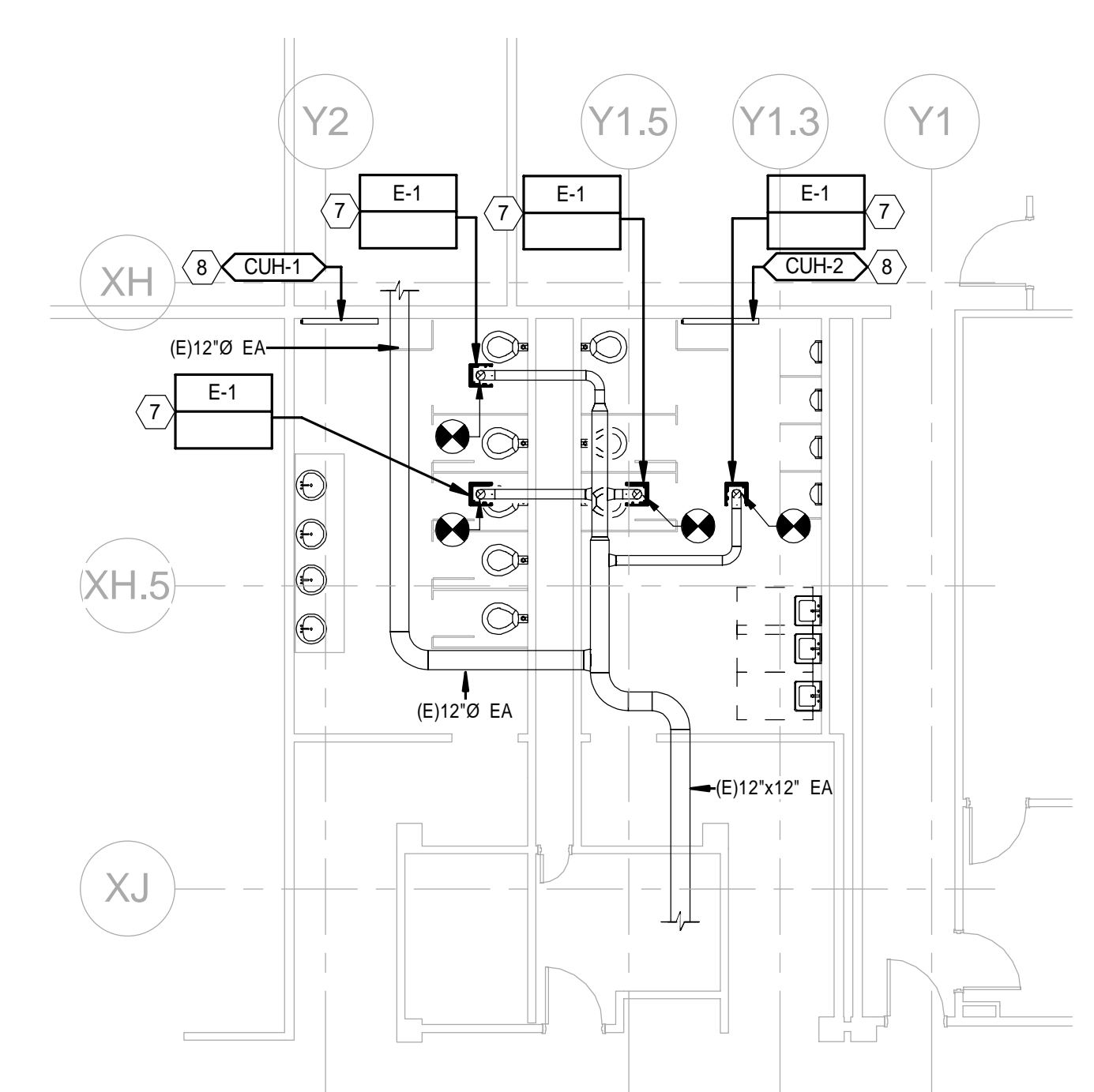
GENERAL NOTES

1. SEE SHEET M-001 FOR LEGEND AND ABBREVIATIONS.

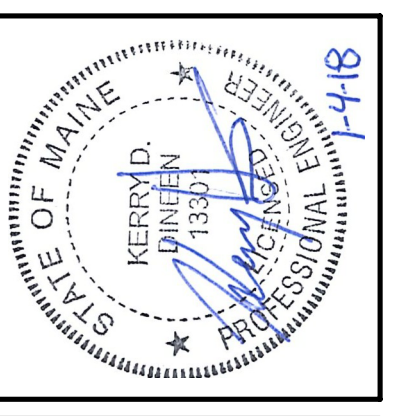
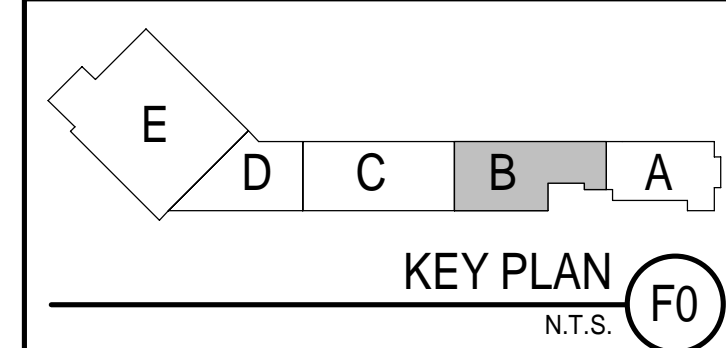
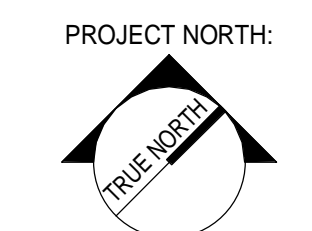
KEYNOTE	KEYNOTE DESCRIPTION
1	BALANCE RELOCATED DIFFUSERS TO PROVIDE EQUAL AIRFLOW AT PRE-CONSTRUCTION TAB OF DIFFUSORS RELOCATED.
2	12X10 OED WITH 1/2" WMS.
3	PROVIDE REMOTE SENSOR AT TOP OF ELEVATOR SHAFT.
4	LOCATE THERMOSTAT IN LOCK BOX. CONFIRM EXACT LOCATION WITH OWNER. THERMOSTAT TO CONTROL UNIT BASED ON TEMPERATURE DETECTED BY REMOTE SENSOR AT TOP OF SHAFT.
5	COORDINATE EXACT LOCATION OF ITEMS IN ELEVATOR SHAFT WITH ELEVATOR EQUIPMENT MANUFACTURER TO ENSURE UNOBSTRUCTED OPERATION OF ELEVATOR.
6	RELOCATED EXISTING RGD INTO NEW CEILING GRID.
7	CONNECT TO EXISTING DUCT CONNECTIONS AND TRANSITION AT GRILLE AS REQUIRED. BALANCE TO AIR FLOW DETERMINED DURING PRE-CONSTRUCTION TAB.
8	CONNECT NEW 3/4" HWS/R TO EXISTING PROVISIONS PROVIDED UNDER DEMO. PROVIDE WITH NEW CONTROL AND BALANCING VALVES. SEE DETAIL 4M-501.



1 2ND FLOOR - HVAC DUCTWORK PLAN
1/8" = 1'-0"



2 2ND FLOOR - HVAC DUCTWORK RESTROOM PLAN
1/8" = 1'-0"



ARCHITECTURE 144 Fore Street P.O. Box 618
Portland, Maine 04104
Tel: (207) 775-3646
Fax: (207) 775-1070
www.smartinc.com

SMART
INCORPORATED
ARCHITECTURE
ENGINEERING
INTERIORS
ENERGY

PROJECT NO. 17033
PROJECT MGR JCDRAWN
JC
DRL
AE OF RECORD
KOD

ISSUED FOR CONSTRUCTION	DATE: 12/21/17
REV: 0	BY: [Signature]

THIS PLAN SHALL NOT BE MODIFIED WITHOUT WRITTEN PERMISSION FROM SEBAGO TECHNICS, INC. USER'S ASSUMES ALL RISK AND WITHOUT LIABILITY TO SEBAGO TECHNICS, INC.

SEBAGO
TECHNICS

WWW.SEAGOTECHNICS.COM
75 John Roberts Rd., Suite 1A
South Portland, ME 04086
Tel: (207) 200-2100
Fax: (207) 785-5660

PROJECT NO. 17033
FIELD BOOK DESIGN CHKD DRAWN

2ND FLOOR HVAC DUCTWORK PLAN
OF:
VERTICAL CIRCULATION IMPROVEMENTS
1001 WESTBROOK STREET
PORTLAND, MAINE 04102

DATE	SCALE
12/21/17	1/8" = 1'-0"

2.MH102