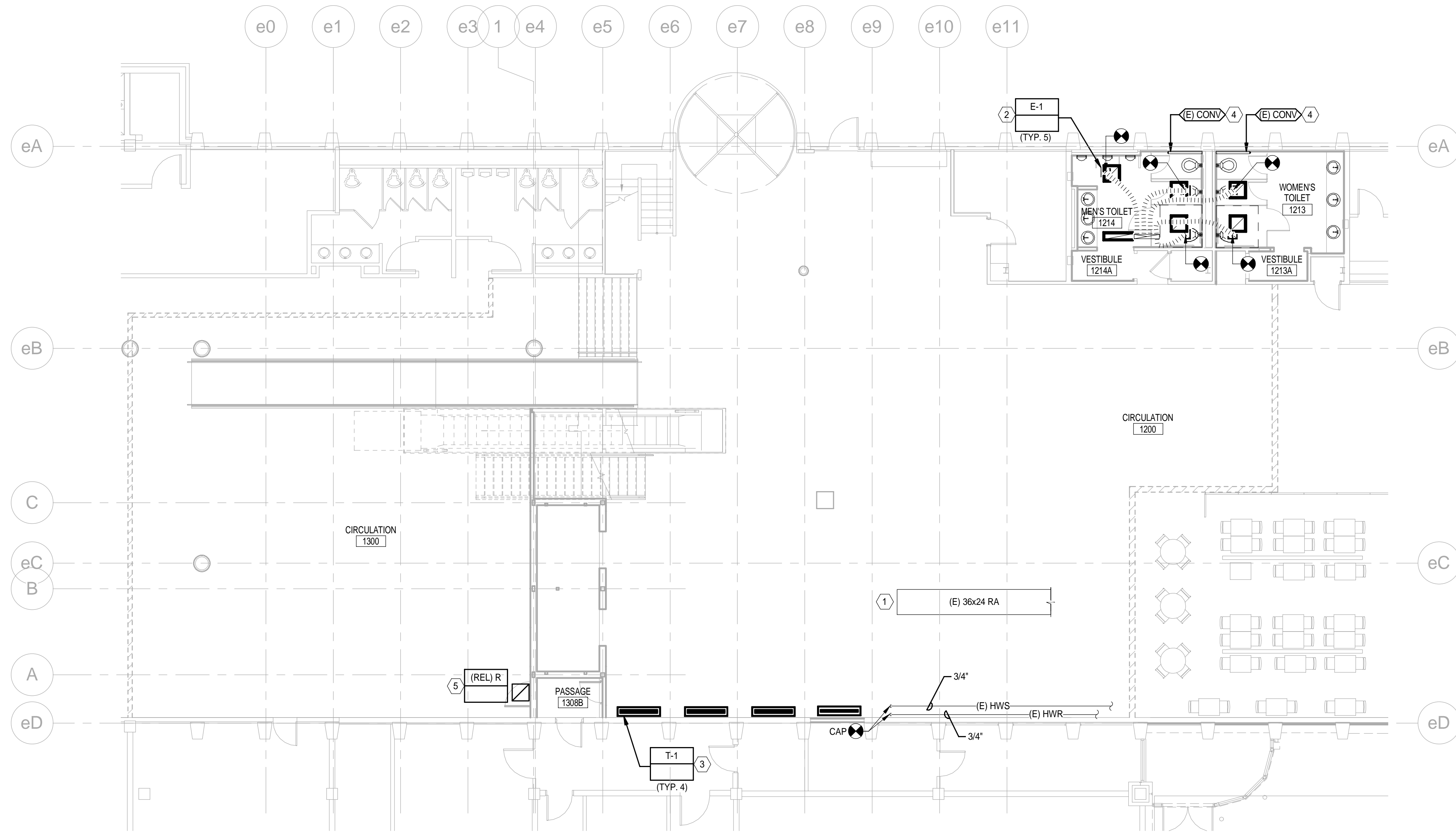


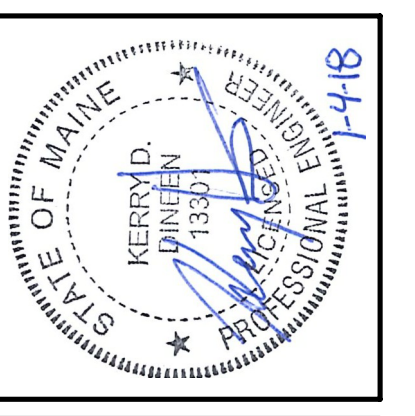
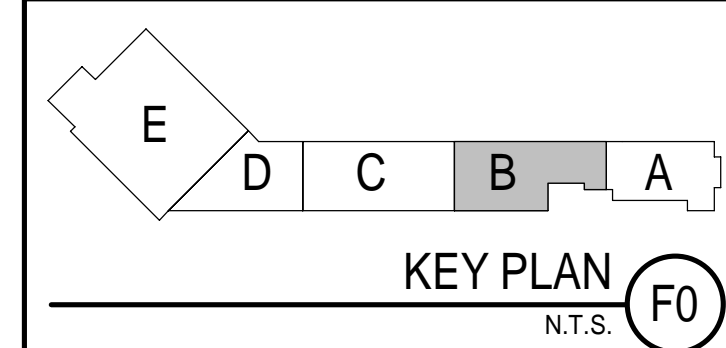
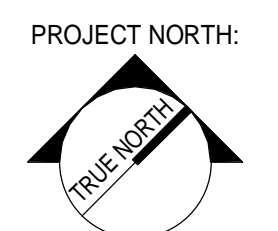
GENERAL NOTES

1. SEE SHEET M-001 FOR LEGEND AND ABBREVIATIONS.

KEYNOTE	KEYNOTE DESCRIPTION
1	PROVIDE OED WITH 1/2" WMS.
2	CONNECT TO EXISTING DUCT CONNECTIONS AND TRANSITION AT GRILLE AS REQUIRED. BALANCE TO AIR FLOW DETERMINED DURING PRE-CONSTRUCTION TAB.
3	TRANSFER GRILLES TO BE LOCATED IN FLOOR OF NEW RAISE FLOOR AREA.
4	PROVIDE NEW CONVECTOR ENCLOSURE OF HEAVY DUTY CORROSION RESISTANT STEEL TO MATCH EXISTING. 36" W X 3-1/2" DEEP X 18" TALL WITH STAMPED FRONT (TOP AND BOTTOM) INLETS AND OUTLETS. EXTEND ENCLOSURE AN ADDITIONAL 12" TO PROVIDE FLUSH FINISH TO WALL AND ACCESS.
5	NEW LOCATION OF RELOCATED RETURN GRILLE.



1 1ST FLOOR - HVAC DUCTWORK PLAN - GATE UPGRADES
1/8" = 1'-0"



ARCHITECTURE 144 Fore Street P.O. Box 618
Portland, Maine 04104
tel. (207) 775-3646
fax. (207) 775-1070
www.smrtinc.com

ENGINEERING
INTERIORS
ENERGY

PROJECT MGR JCDRAWN JAE OF RECORD
JC
DRL
KOD

SMRT
SMART PROJECT NO. 17033

REV.	BY:	DATE:	ISSUED FOR CONSTRUCTION
0		12/21/17	STATUS: DATE: 12/21/17

THIS PLAN SHALL NOT BE MODIFIED WITHOUT WRITTEN PERMISSION FROM SEBAGO TECHNICS, INC.
USERS ASSUME RISK AND WITHOUT LIABILITY TO SEBAGO TECHNICS, INC.

SEBAGO
TECHNICS

WWW.SEBAGOTECHNICS.COM
75 John Roberts Rd., Suite 1A
South Portland, ME 04086
Tel: (207) 202-1100
Fax: (207) 775-5660

PROJECT NO. | FIELD BOOK | DESIGN | CHKD | DRAWN

1ST FLOOR HVAC DUCTWORK PLAN
OF:
VERTICAL CIRCULATION IMPROVEMENTS
1001 WESTBROOK STREET
PORTLAND, MAINE 04102

DATE	SCALE
12/21/17	1/8" = 1'-0"

2.MH101