

ARCHITECTURE 144 Fore Street P.O. Box 618
 Portland, Maine 04104
 ENGINEERING tel. (207) 772-3846
 PLANNING fax. (207) 772-1070
 INTERIORS www.smrtinc.com
 ENERGY
SMRT
 PROJECT NO. PROJECT MGR. L.C. DRAWN BY AE OF RECORD
 DRL CDS DJT
 17033

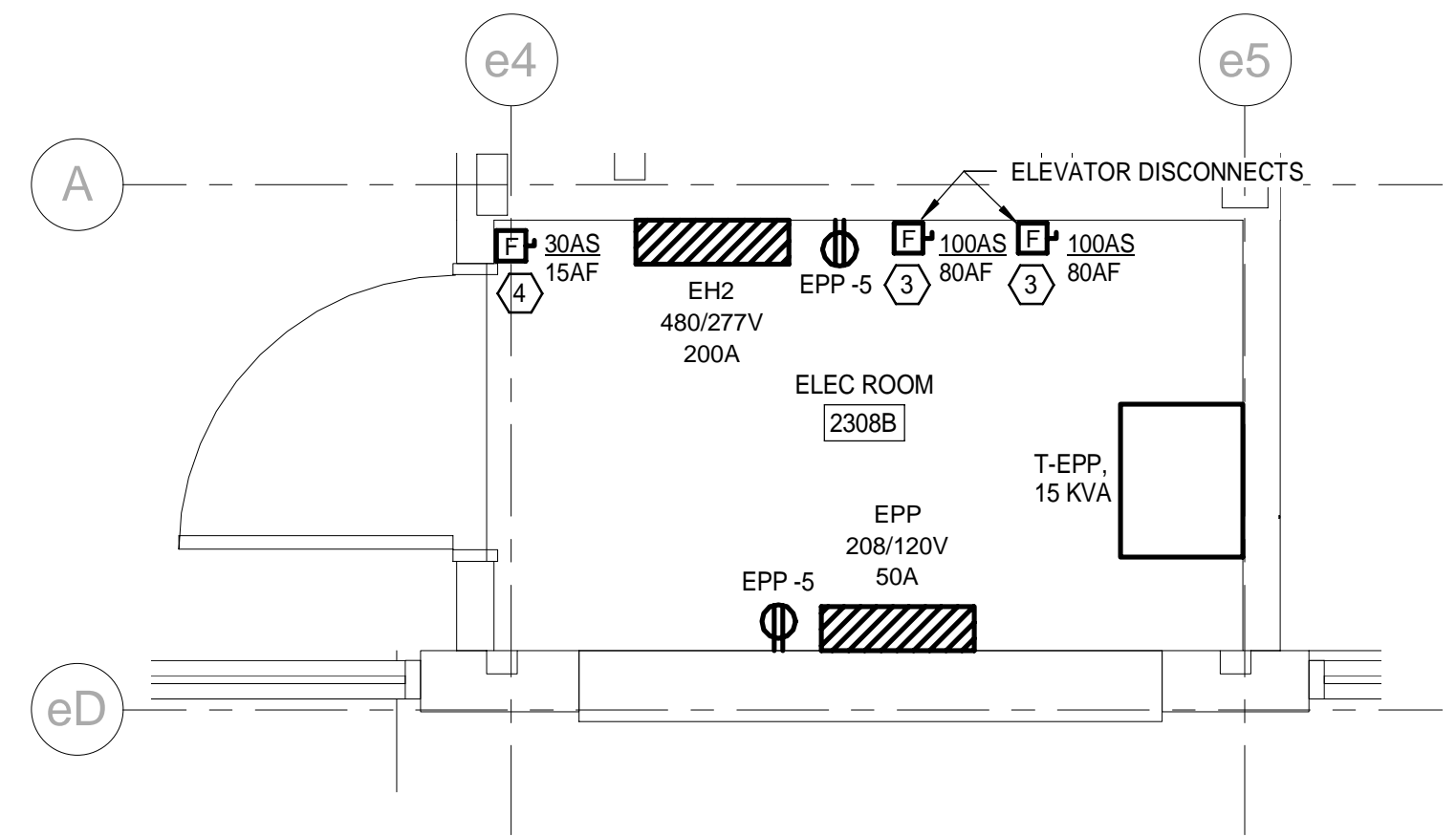
ISSUED FOR CONSTRUCTION	DATE: 12/21/17
STATUS:	BY: 0
THIS PLAN SHALL NOT BE MODIFIED WITHOUT WRITTEN PERMISSION FROM SEBAGO TECHNOLOGIES, INC.	
USER'S SCALE AND WITHOUT LIABILITY TO SEBAGO TECHNOLOGIES, INC.	

SEBAGO
 TECHNOLOGIES
 WWW.SEBAGOTECHNICS.COM
 75 John Roberts Rd., Suite 1A
 250 Goddard Rd., Suite B
 Portland, ME 04106
 Tel. 207.200.2100
 Tel. 207.783.6666
 PROJECT NO. FIELD BOOK DESIGN CHKD DRAWN

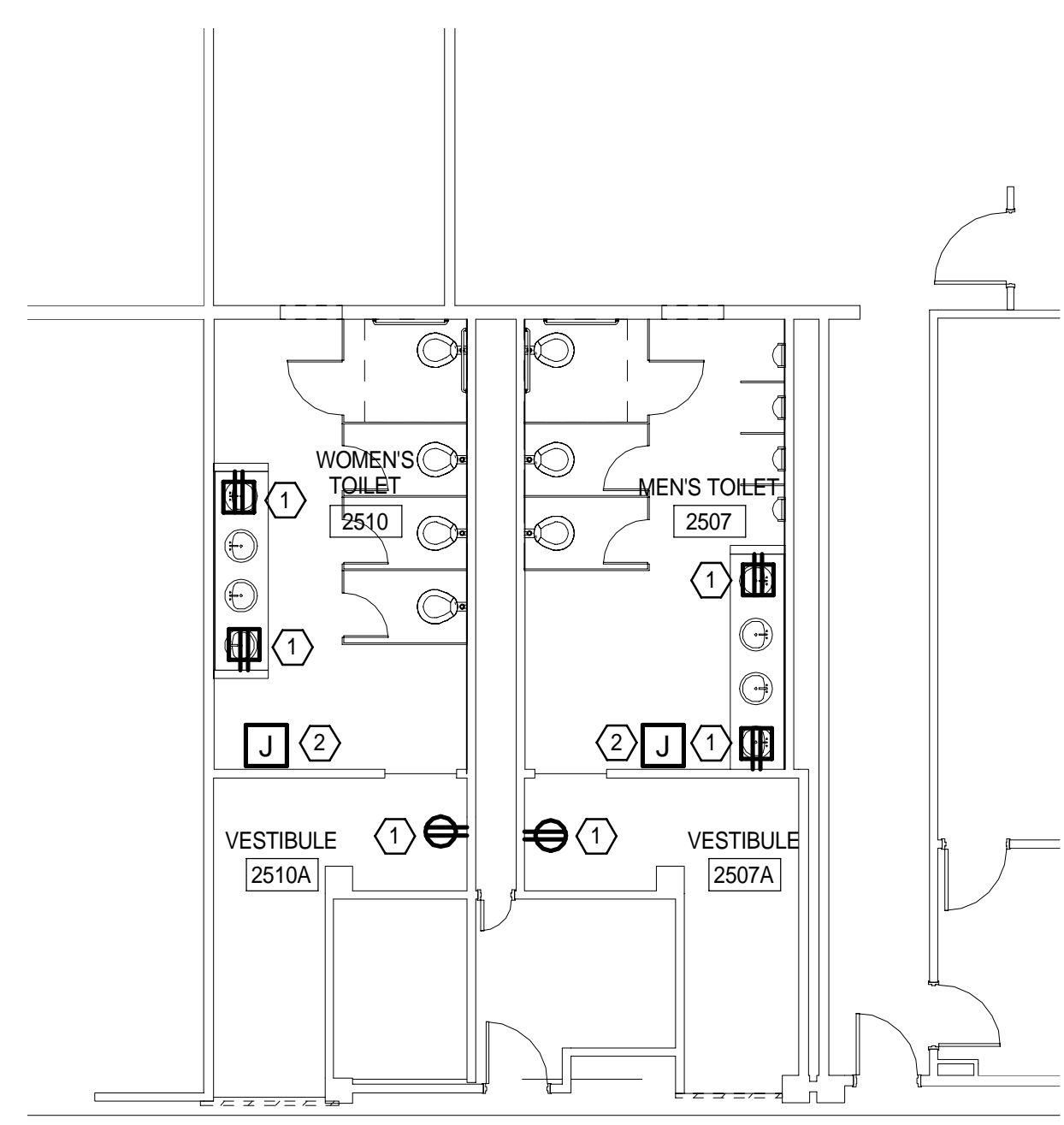
2ND FLOOR - POWER PLAN
 OF:
PORTLAND INTERNATIONAL JETPORT
VERTICAL CIRCULATION IMPROVEMENTS
 1001 WESTBROOK STREET
 PORTLAND, MAINE 04102

DATE	SCALE
10-27-17	As Indicated

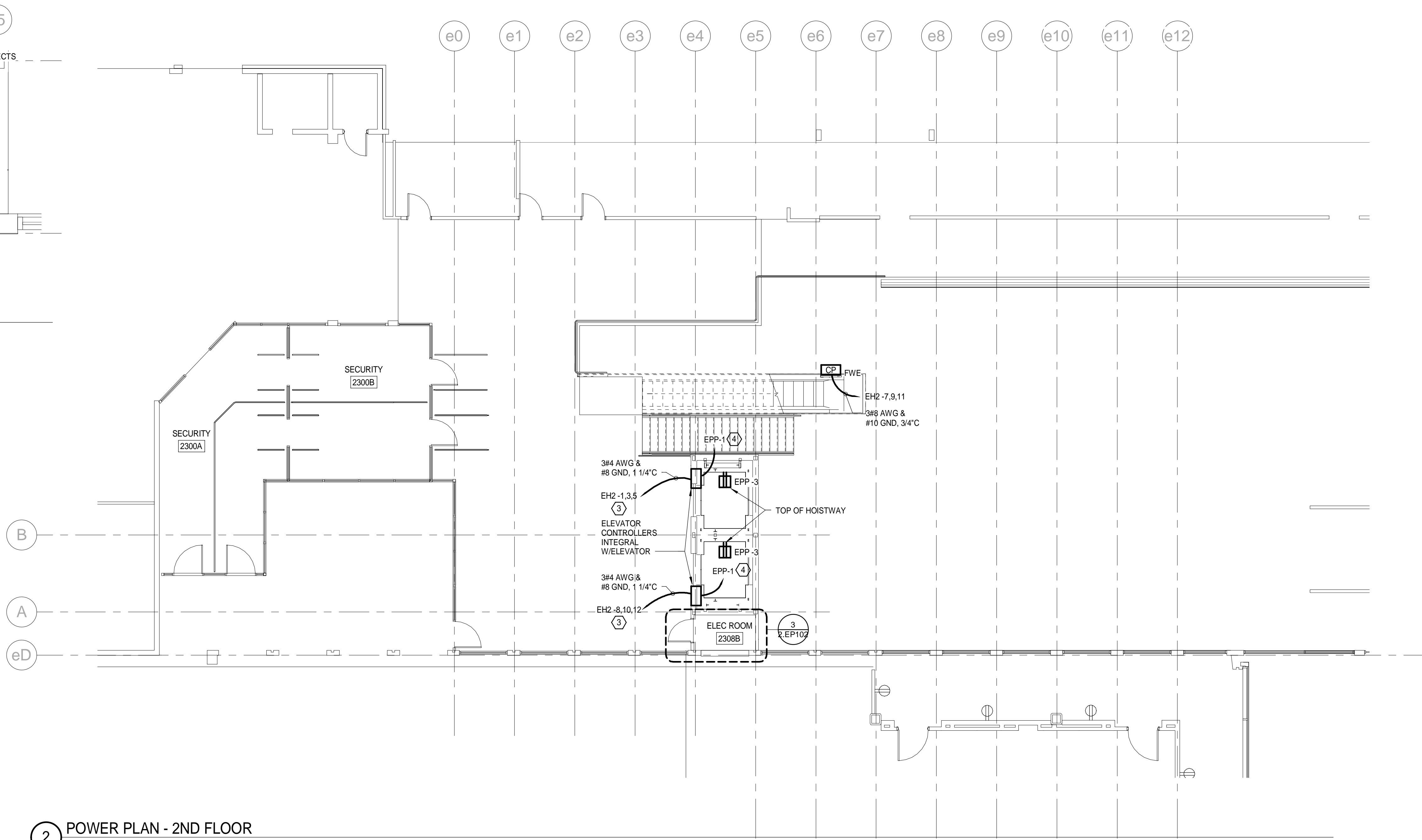
2.EP102



3 ELECTRICAL ROOM
 1/2" = 1'-0"



1 RESTROOM POWER PLAN - 2ND FLOOR
 1/8" = 1'-0"



2 POWER PLAN - 2ND FLOOR
 1/8" = 1'-0"

KEYED NOTES:

- ① EXTEND EXISTING BRANCH CIRCUIT THAT FED RECEPTACLES SHOWN TO BE REMOVED ON 2.ED102 TO NEW DEVICES SHOWN. MOUNT RECEPTACLES AT SINKS 42" AFF TO BOTTOM OF DEVICE.
- ② EXTEND EXISTING WIRING FROM HAND DRY SHOWN TO BE REMOVED ON 2.ED102 TO NEW LOCATION SHOWN.
- ③ ELEVATOR MACHINE MOTOR TO BE FED FROM SHUNT TRIP CIRCUIT BREAKER IN PANELBOARD EH2 TO ELEVATOR DISCONNECT IN ELECTRICAL ROOM AND THEN TO ELEVATOR CONTROLLER. COORDINATE WITH ELEVATOR INSTALLER FOR EXACT LOCATIONS OF ELECTRICAL CONNECTIONS.
- ④ ELEVATOR CAB LIGHTING TO BE FED FROM PANELBOARD EPP TO DISCONNECT SWITCH IN ELECTRICAL ROOM AND THEN TO ELEVATOR CONTROLLER. COORDINATE WITH ELEVATOR INSTALLER FOR EXACT LOCATIONS OF ELECTRICAL CONNECTIONS.

NOTES:

1. SEE SHEET 2.E-001 FOR LEGEND AND GENERAL NOTES.

