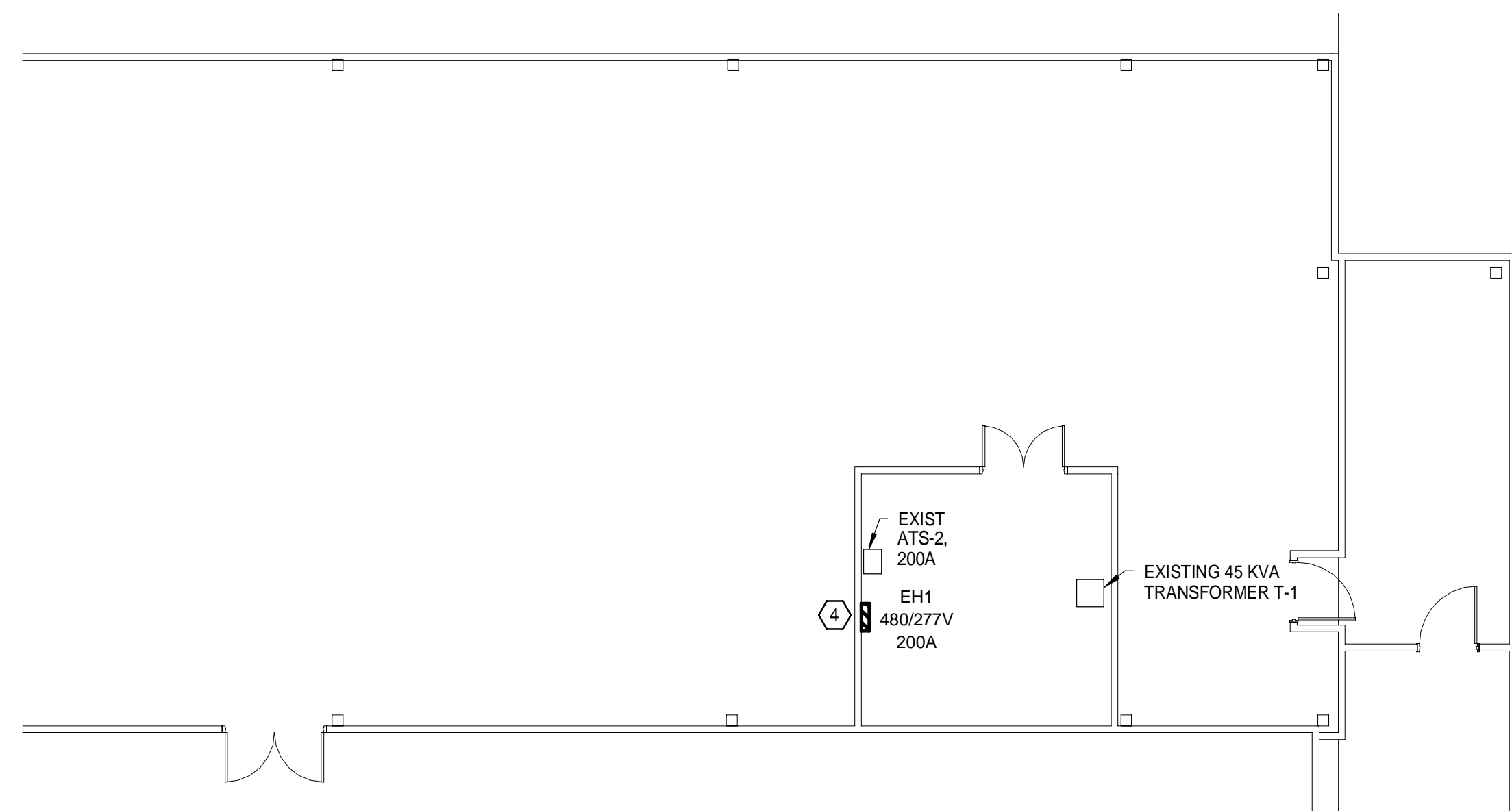


1 POWER PLAN - 1ST FLOOR
1/8" = 1'-0"



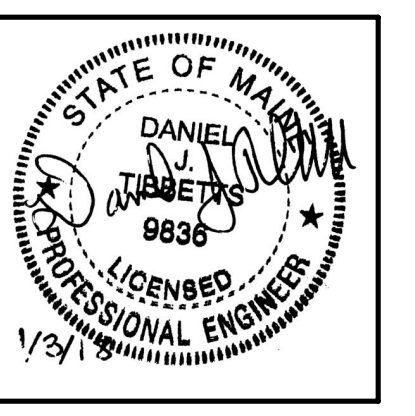
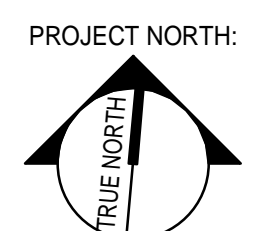
2 PENTHOUSE POWER PLAN
1/8" = 1'-0"

NOTES:

- SEE SHEET 2.E-001 FOR LEGEND AND GENERAL NOTES.

KEYED NOTES:

- EXTEND EXISTING BRANCH CIRCUIT THAT FED RECEPTACLES SHOWN TO BE REMOVED ON 2.E.102 TO NEW DEVICES SHOWN. MOUNT RECEPTACLES 42" AFF TO BOTTOM OF DEVICE.
- PROVIDE POWER FOR NEW ELECTRIC HAND DRYERS FED FROM EXISTING PANELBOARD MPP1A. IN EXISTING GE NLAB PANELBOARD REMOVE AN EXISTING 20 AMP, TWO POLE CIRCUIT BREAKER AND REPLACE WITH TWO 20 AMP, SINGLE POLE CIRCUIT BREAKERS TO FEED NEW HAND DRYERS.
- PROVIDE POWER FOR ELEVATOR PIT SUMP PUMP VIA SUMP PUMP CONTROL PANEL. COORDINATE WITH PLUMBING CONTRACTOR FOR EXACT LOCATIONS OF ELECTRICAL CONNECTIONS.
- NEW PANELBOARD EH1 TO BE FED FROM EXISTING 200A TRANSFER. NEW PANELBOARD TO FEED EXISTING TRANSFORMER T-1 AND NEW PANELBOARD EH2. SEE PARTIAL ONE-LINE DIAGRAM FOR WIRE SIZES.



ARCHITECTURE 144 Fore Street P.O. Box 618
Portland, Maine 04104
tel. (207) 772-3846
fax. (207) 772-1070
www.smartinc.com

ENGINEERING
PLANNING
INTERIORS
ENERGY

SMART

PROJECT NO. PROJECT MGR. JCDRAWN JAE OF RECORD
DRL CDS DIT
17033

REV.	DATE	BY	ISSUED FOR CONSTRUCTION
0	12/21/17		STATUS: DATE: BY: ISSUED FOR CONSTRUCTION

THIS PLAN SHALL NOT BE MODIFIED WITHOUT WRITTEN PERMISSION FROM SEBAGO TECHNOLOGIES, INC. ALL SHALL BE AT THE USER'S SOLE RISK AND WITHOUT LIABILITY TO SEBAGO TECHNOLOGIES, INC.

SEBAGO
TECHNICS

WWW.SEBAGOTECHNICS.COM
75 John Roberts Rd., Suite 1A 250 Goddard Rd., Suite B
Saco, ME 04072 Tel. (207) 200-2100 Fax. (207) 200-2100 Tel. (207) 783-6666

PROJECT NO. FIELD BOOK DESIGN CHKD DRAWN

1ST FLOOR - POWER PLAN AND PENTHOUSE
POWER PLAN
OF:
PORTLAND INTERNATIONAL JETPORT
VERTICAL CIRCULATION IMPROVEMENTS
1001 WESTBROOK STREET
PORTLAND, MAINE 04102

DATE	SCALE
10-27-17	1/8" = 1'-0"