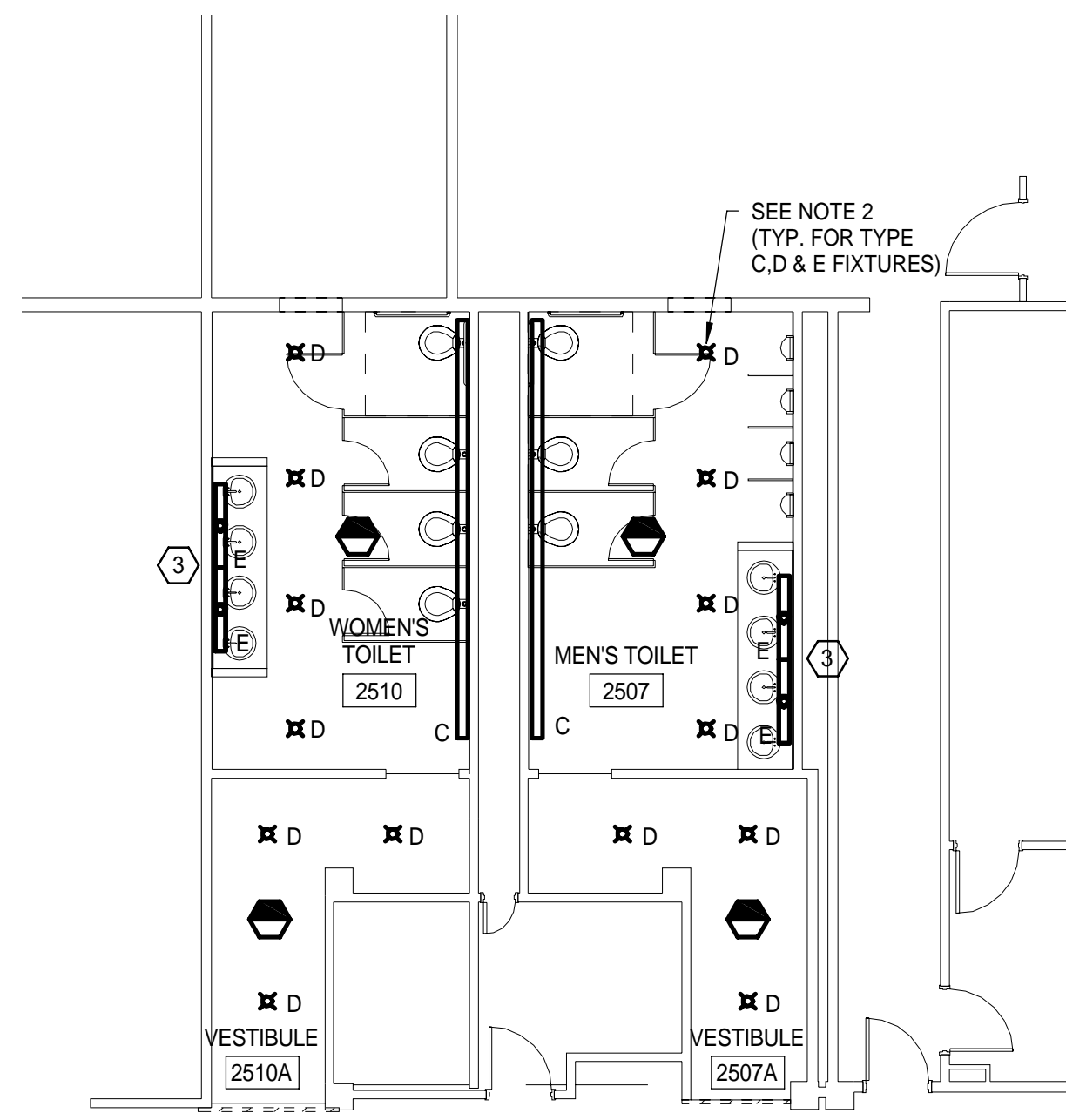
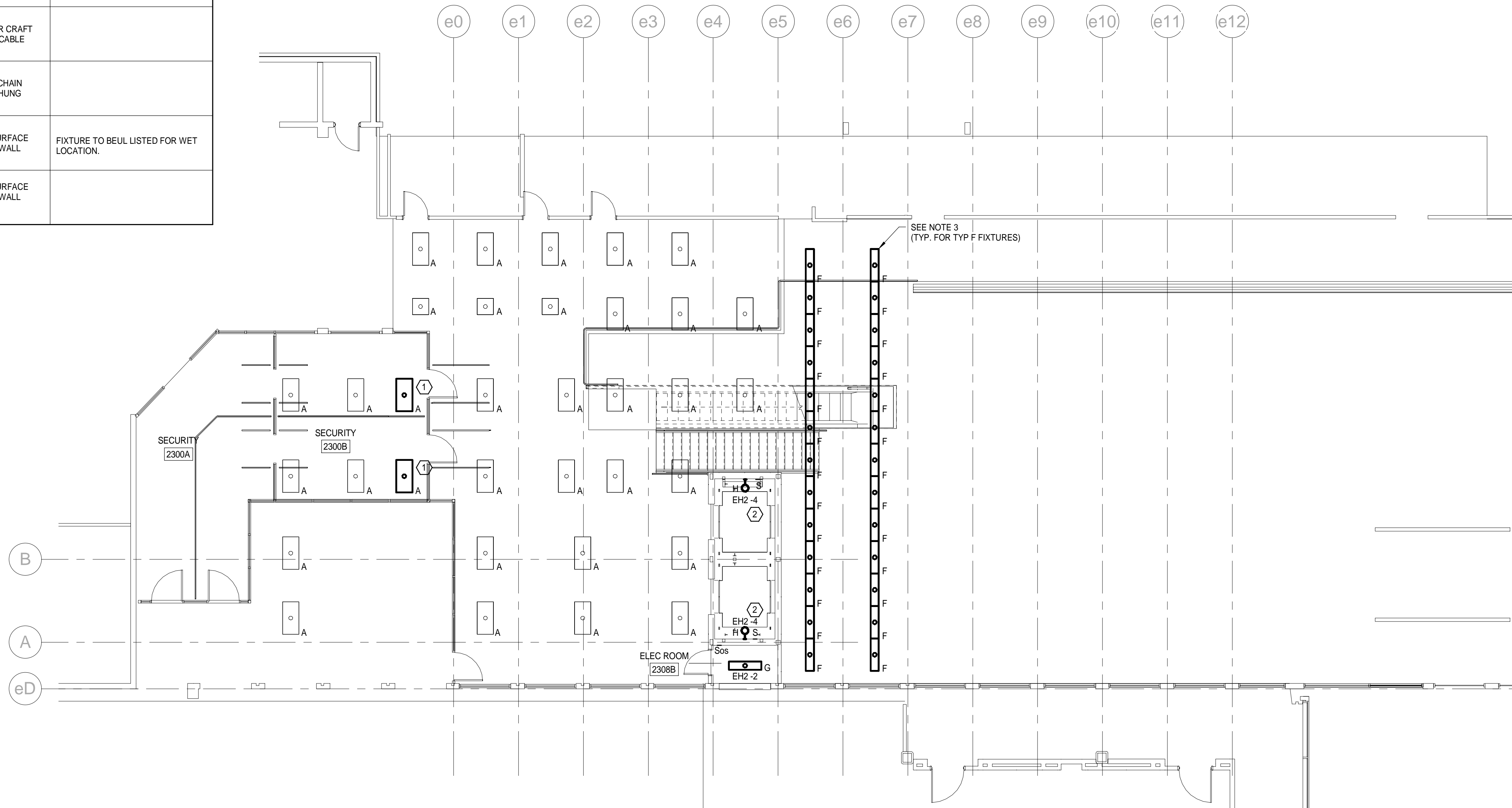


LIGHT FIXTURE SCHEDULE					
TYPE	DESCRIPTION	MFR.	LAMPS	MOUNTING	NOTES
A	EXISTING 2x4 & 2x2 RECESSED PARABOLICS WITH SEMI SPECULAR REFLECTOR. 277V	EXISTING TO BE RELOCATED	3-32W T8 3500 K	CEILING RECESSED	RELOCATE FIXTURES AS INDICATED.
B	2x2 RECESSED HIGH PERFORMANCE LED FIXTURE WITH FROSTED DIFFUSER AND BOOSTED OUTPUT LIGHT ENGINE. 277V	FINELITE HPRLED-A-22-DCO-B -935-277-SC-C1	37W LED 3500 K	CEILING RECESSED	
C	20' LONG RECESSED HIGH LED LINEAR OPEN APERTURE WALL GRAZER COVE LIGHT WITH HIGH OUTPUT DRIVER. 277V	STARFIRE VWG3-L935HS-240 -WX1-W	145W LED 3500 K	CEILING RECESSED	
D	6" ROUND APERTURE HIGH OUTPUT DOWNLIGHT WITH 45 DEG FLOOD DISTRIBUTION AND SPECULAR CLEAR ALZAK REFLECTOR. 277V	PRESCOLITE D6LED3 SERIES	26W LED 3500 K	CEILING RECESSED	
E	4' LED STRIP LIGHT. 277V	COLUMBIA CSL4-4035	40W LED 3500 K	SURFACE	
F	4' LINEAR DIRECT/INDIRECT PENDANT FIXTURE. 277V	PEERLESS BRM4 1 32 SPR SSP 4 4 277 GEB10 SCT LP835 F2 XX C110	1-F32T8 3500 K	AIR CRAFT CABLE	
G	4' LED LENSED STRIP LIGHT WITH HIGH LUMEN OUTPUT. 277V	COLUMBIA LCL4-40HL-EU	52 W LED 4000K	CHAIN HUNG	
H	WALL MOUNT VAPOR TIGHT GLOBE WITH FROSTED ACRYLIC DIFFUSER. 277V	LURALINE LVB43-FR-LF1X 12/65 -TAL	12W LED 4000K	SURFACE WALL	FIXTURE TO BE UL LISTED FOR WET LOCATION.
	THERMOPLASTIC EXIT SIGN WITH WHITE FACE & RED LETTERING. 277V	DUAL LITE CV3 SERIES	INTEGRAL W/UNIT	SURFACE WALL	



1 RESTROOM LIGHTING PLAN - 2ND FLOOR  
1/8" = 1'-0"



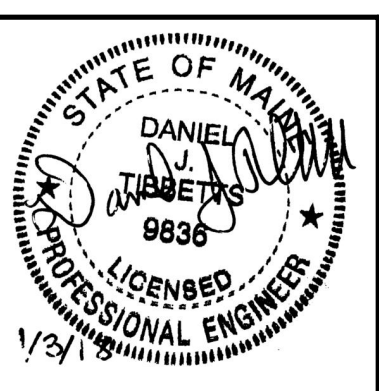
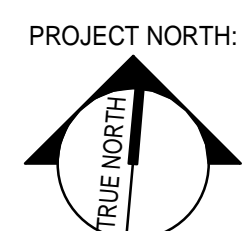
2 LIGHTING PLAN - 2ND FLOOR  
1/8" = 1'-0"

**KEYED NOTES:**

- RELOCATE LIGHTS FROM CURRENT LOCATION ON 2.ED102 TO NEW LOCATION SHOWN AND EXTEND EXISTING WIRING AS REQUIRED TO ACCOMMODATE NEW LOCATIONS.
- MOUNT NEW LIGHTS AND SWITCHES AT TOP OF ELEVATOR HOISTWAY. COORDINATE EXACT MOUNTING LOCATIONS WITH ELEVATOR INSTALLER.
- MOUNT LED STRIP LIGHTS ON WOOD BLOCKING BEHIND MIRROR. MOUNT TWO FIXTURES AT THE TOP AND TWO FIXTURES AT THE BOTTOM OF EACH MIRROR.

**NOTES:**

- SEE SHEET 2.E-001 FOR LEGEND AND GENERAL NOTES.
- RE-USE EXISTING BRANCH CIRCUIT THAT CURRENTLY FEEDS LIGHTS SHOWN TO BE REMOVED ON 2.ED102 TO FEED NEW RESTROOM LIGHTS. PROVIDE NEW OCCUPANCY SENSORS FOR CONTROL OF LIGHTS.
- NEW TYPE F FIXTURES TO BE FED FROM THE SAME BRANCH CIRCUIT THAT CURRENTLY FEEDS THE EXISTING PENDANT LIGHT FIXTURES. IN ONE OF THE TWO NEW ROWS FEED THE TWO END AND MIDDLE FIXTURES FROM THE NEAREST EMERGENCY LIGHTING CIRCUIT. FIELD VERIFY THAT EXISTING BRANCH CIRCUITS HAVE CAPACITY TO FEED THE ADDITIONAL FIXTURES.



ARCHITECTURE 144 Fore Street P.O. Box 618  
Portland, Maine 04104  
tel. (207) 772-3846  
fax. (207) 772-1070  
www.smrtinc.com

**SMART**  
ENERGY INTERIORS

PROJECT NO. 17033  
PROJECT MGR. JCDRAWN  
AE OF RECORD  
DIT  
CDS  
DRL

REV.	DATE	BY	ISSUED FOR CONSTRUCTION
0	12/21/17		STATUS: DATE: 12/21/17

THIS PLAN SHALL NOT BE MODIFIED WITHOUT WRITTEN PERMISSION FROM SEBAGO TECHNOLOGIES, INC. THE USER SHALL BE RESPONSIBLE FOR VERIFYING THE ACCURACY OF ALL INFORMATION AND ASSUMING ALL RISK AND WITHOUT LIABILITY TO SEBAGO TECHNOLOGIES, INC.

**SEBAGO**  
TECHNICS

WWW.SEBAGOTECHNICS.COM  
75 John Roberts Rd., Suite 1A  
South Portland, ME 04086  
Tel. 207-209-2100  
Tel. 207-783-6666

PROJECT NO. 17033  
FIELD BOOK  
DESIGN  
CHKD  
DRAWN

2ND FLOOR - LIGHTING PLAN  
OF:  
PORTLAND INTERNATIONAL JETPORT  
VERTICAL CIRCULATION IMPROVEMENTS  
1001 WESTBROOK STREET  
PORTLAND, MAINE 04102

DATE	SCALE
10-27-17	As Indicated

2.EL102