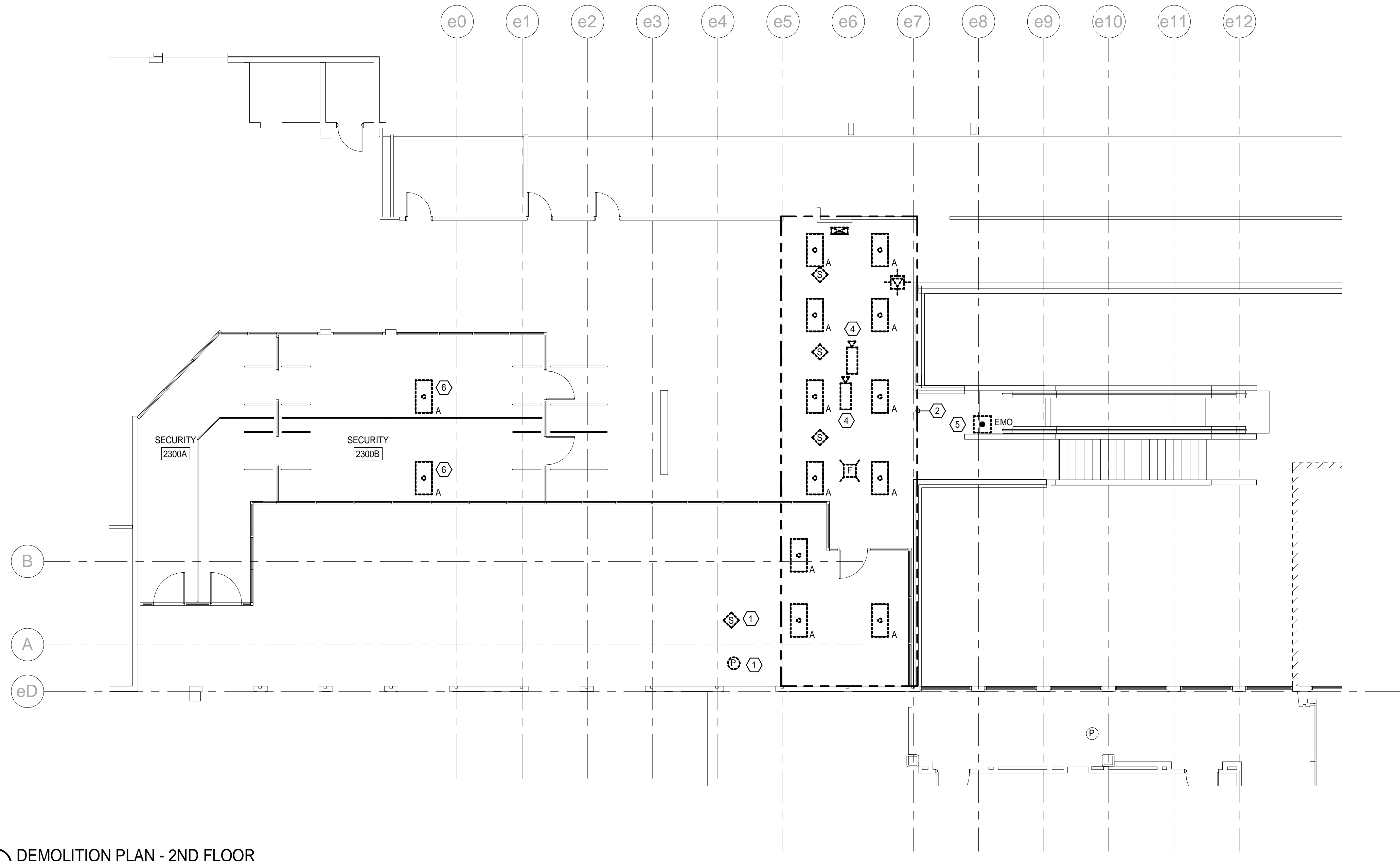


1 RESTROOM DEMOLITION PLAN - 2ND FLOOR
1/8" = 1'-0"



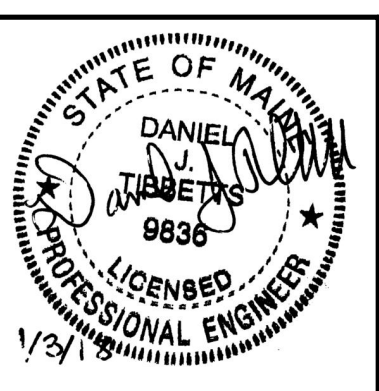
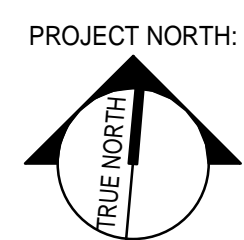
2 DEMOLITION PLAN - 2ND FLOOR
1/8" = 1'-0"

NOTES:

1. SEE SHEET 2.E-001 FOR LEGEND AND GENERAL NOTES.
2. IN EXISTING RESTROOMS REMOVE ALL EXISTING LIGHTS, SPEAKERS, RECEPTACLES AND FIRE ALARM AND REPLACE WITH NEW AS INDICATED ON POWER, LIGHTING AND SYSTEMS DRAWINGS. RE-USE EXISTING OUTLET BOXES, CONDUIT, BRANCH CIRCUITS AND LOW VOLTAGE WIRING TO THE EXTENT POSSIBLE LE TO FEED NEW DEVICES.

KEYED NOTES:

- ① EXISTING SMOKE DETECTOR AND PAGING SPEAKER TO BE REMOVED AND RELOCATED TO NEW LOCATION SHOWN ON 2.EY102. EXTEND EXISTING WIRING AS REQUIRED TO ACCOMMODATE NEW DEVICE LOCATIONS.
- ② WITHIN DESIGNATED AREA CEILING WILL BE REMOVED AND STRUCTURE LEFT EXPOSED. ALL EXISTING CONDUITS RUNNING THROUGH THIS AREA TO BE RE-ROUTED SO THAT NO WIRING IS LEFT IN AREA WITH EXPOSED STRUCTURE. FIELD VERIFY SIZE AND QUANTITIES OF CONDUITS THAT WILL NEED TO BE RE-ROUTED.
- ③ DISCONNECT POWER FOR HAND DRYER AND RE-USE BRANCH CIRCUITS TO FEED NEW HAND DRYERS. EXTEND EXISTING WIRING AS REQUIRED TO ACCOMMODATE LOCATIONS SHOWN ON 2.EP102.
- ④ REMOVE SECURITY CAMERAS AND RELOCATE AS DIRECTED BY OWNER. EXTEND EXISTING WIRING TO ACCOMMODATE NEW CAMERA LOCATIONS.
- ⑤ REMOVE ALL CONDUIT, WIRING AND EMO BUTTONS ASSOCIATED WITH ESCALATOR.
- ⑥ REMOVE EXISTING LIGHTS AND RELOCATE AT NEW LOCATION SHOWN ON 2.EL102. EXTEND EXISTING WIRING AS REQUIRED TO ACCOMMODATE NEW LIGHT LOCATIONS.



ARCHITECTURE 144 Fore Street P.O. Box 618
Portland, Maine 04104
Tel. (207) 772-3846
Fax. (207) 772-1070
www.smrtd.com

SMART
ENGINEERING
PLANNING
INTERIORS
ENERGY

PROJECT NO. 17033
PROJECT MGR. LJC
DRAWN. CDS
CHECKED. DRJ
DATE OF RECORD. DJT

ISSUED FOR CONSTRUCTION	DATE: 12/21/17
BY: [Signature]	STATUS: []
REV: 0	THIS PLAN SHALL NOT BE MODIFIED WITHOUT WRITTEN PERMISSION FROM SEBAGO TECHNICS, INC. ALL CHANGES SHALL BE AT THE USER'S SOLE RISK AND WITHOUT LIABILITY TO SEBAGO TECHNICS, INC.

SEBAGO
TECHNICS

WWW.SEBAGOTECHNICS.COM
75 John Roberts Rd., Suite 1A
South Portland, ME 04086
Tel. 207.200.2100
Tel. 207.783.6666

PROJECT NO. 17033
FIELD BOOK: []
DESIGN: []
CHKD: []
DRAWN: []

2ND FLOOR - DEMOLITION PLAN
OF:
PORTLAND INTERNATIONAL JETPORT
VERTICAL CIRCULATION IMPROVEMENTS
1001 WESTBROOK STREET
PORTLAND, MAINE 04102

DATE	SCALE
10-27-17	1/8" = 1'-0"

2.ED102