

GENERAL NOTES

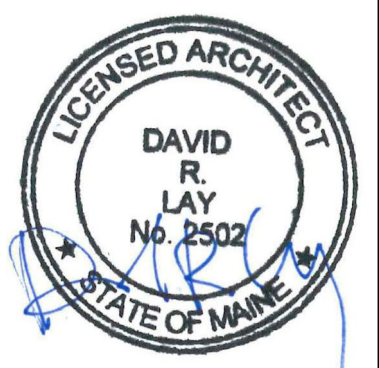
- SEE FLOOR PLANS FOR 'PLAN NOTES'.
- SEE SHEET 2-G-001 FOR GENERAL PROJECT NOTES, LEGENDS, AND ABBREVIATIONS.
- SEE SHEET 2-G-002 FOR WALL TYPES, TOP OF WALL DETAILS, AND GENERAL MOUNTING HEIGHTS.
- FURNITURE AND OWNER PROVIDED EQUIPMENT ARE INDICATED BY DASHED LINE TYPE.
- CONTRACTOR IS RESPONSIBLE FOR THE COORDINATION OF OWNER PROVIDED EQUIPMENT INCLUDING BUT NOT LIMITED TO DIMENSIONAL INFORMATION, AND MECHANICAL, ELECTRICAL, AND PLUMBING REQUIREMENTS.
- CONTRACTOR TO PROVIDE BLOCKING FOR ALL WALL MOUNTED EQUIPMENT INCLUDING THOSE ITEMS NOT IN CONTRACT.

ACCESSORIES SCHEDULE

(A) LIQUID SOAP DISPENSER	O/C
(B) TOWEL DISPENSER/WASTE RECEPTACLE	C/C
(C) TOILET TISSUE (ROLL) DISPENSER	C/C
(D) GRAB BAR SET (3)	C/C
(E) SANITARY NAPKIN DISPOSAL UNIT	C/C
(F) NAPKIN/TAMPON VENDOR	C/C
(G) TOILET SEAT COVER DISPENSER	C/C
(H) STAINLESS STEEL UTILITY SHELF	C/C
(I) DIAPER CHANGING TABLE	C/C
(J) ELECTRIC HAND DRYER	C/C
(K) MIRROR (GLASS)	C/C

O/O = OWNER PROVIDED/OWNER INSTALLED
 O/C = OWNER PROVIDED/CONTRACTOR INSTALLED
 C/C = CONTRACTOR PROVIDED/CONTRACTOR INSTALLED

- PROVIDE 3 GRAB BARS FOR EACH ACCESSIBLE TOILET. SEE 1/G1002 FOR TYPE/LOCATIONS
- REVISE FRAMING AT EXISTING WALLS TO ACCOMMODATE RECESSED TOILET ACCESSORIES.



ARCHITECTURE 144 Fore Street P.O. Box 618
 Portland, Maine 04104
 Tel: (207) 772-3846
 Fax: (207) 772-1070
 www.srmlinc.com

SMART
 INTERIORS
 ENERGY

PROJECT NO. 17033
 PROJECT MGR. JCDRAWN
 ARCHITECT DRL
 ENGINEERING DRL
 PLANNING DRL
 INTERIORS DRL
 ENERGY DRL

REV.	DATE	BY	ISSUED FOR CONSTRUCTION
0	12/21/17		STATUS: DATE: 12/21/17

THIS PLAN SHALL NOT BE MODIFIED WITHOUT WRITTEN PERMISSION FROM SEBAGO TECHNICS, INC.
 THE CONTRACTOR SHALL BE RESPONSIBLE FOR VERIFYING ALL CONDITIONS AND PROVIDING ALL NECESSARY BLOCKING AND WITHOUT LIABILITY TO SEBAGO TECHNICS, INC.

SEBAGO
 TECHNICS
 T E C H N I C S

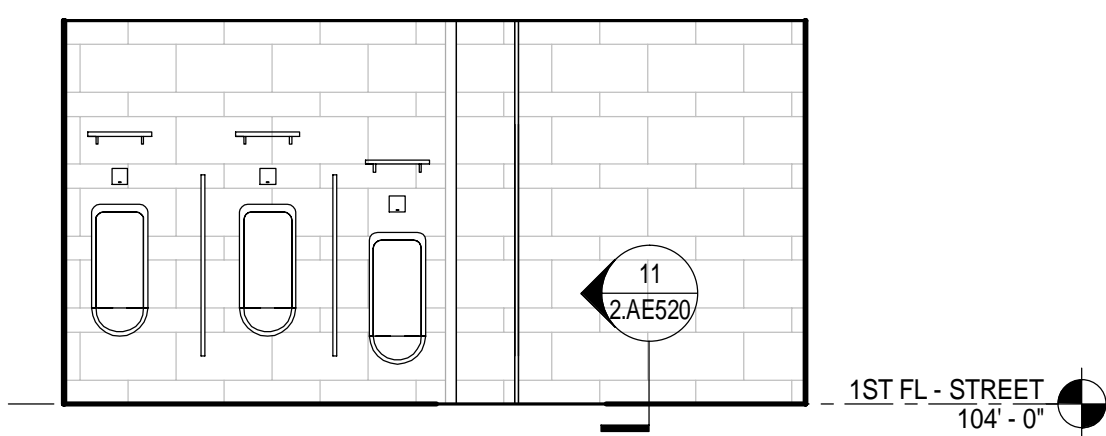
WWW.SEBAGOTECHNICS.COM
 75 John Roberts Rd. - Suite 1A
 South Portland, ME 04086
 Tel: (207) 783-6669
 Fax: (207) 783-6668

PROJECT NO. 17033
 FIELD BOOK DESIGN CHKD DRAWN

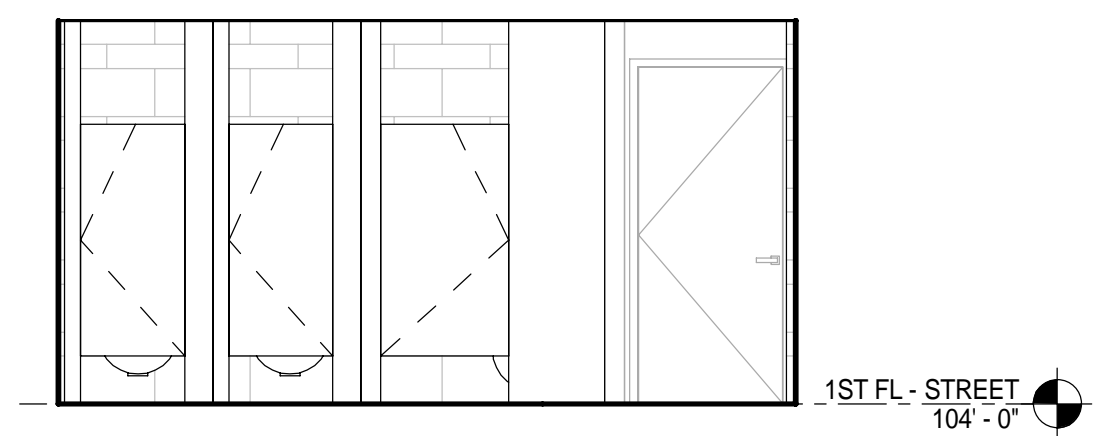
INTERIOR ELEVATIONS
 OF:
**PORTLAND INTERNATIONAL JETPORT
 VERTICAL CIRCULATION IMPROVEMENTS**
 1001 WESTBROOK STREET
 PORTLAND, MAINE 04102

DATE	SCALE
12/21/17	As indicated

2.AE211



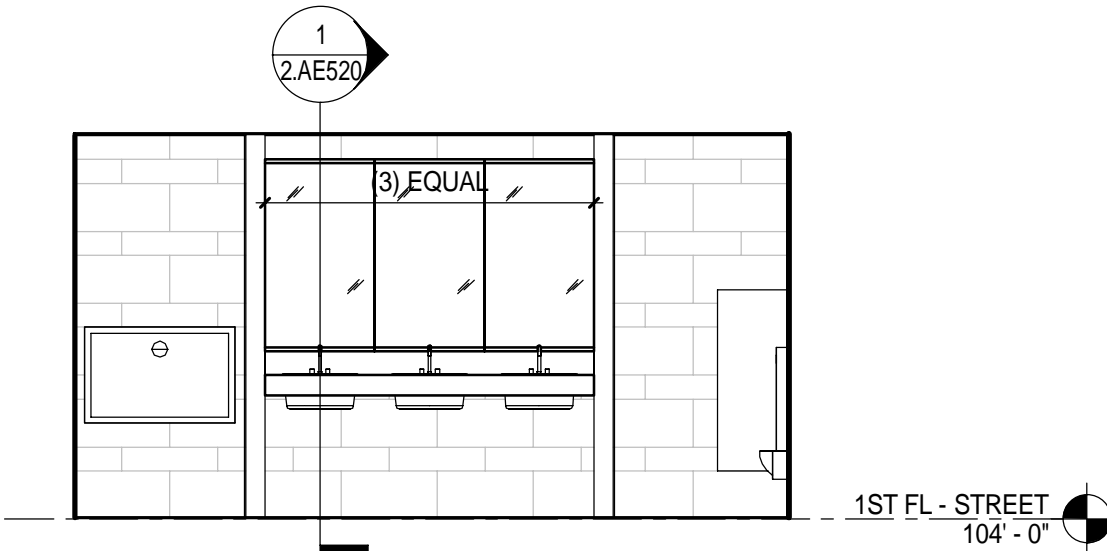
12 1ST FLOOR - MEN'S TOILET - NORTH
 1/4" = 1'-0"



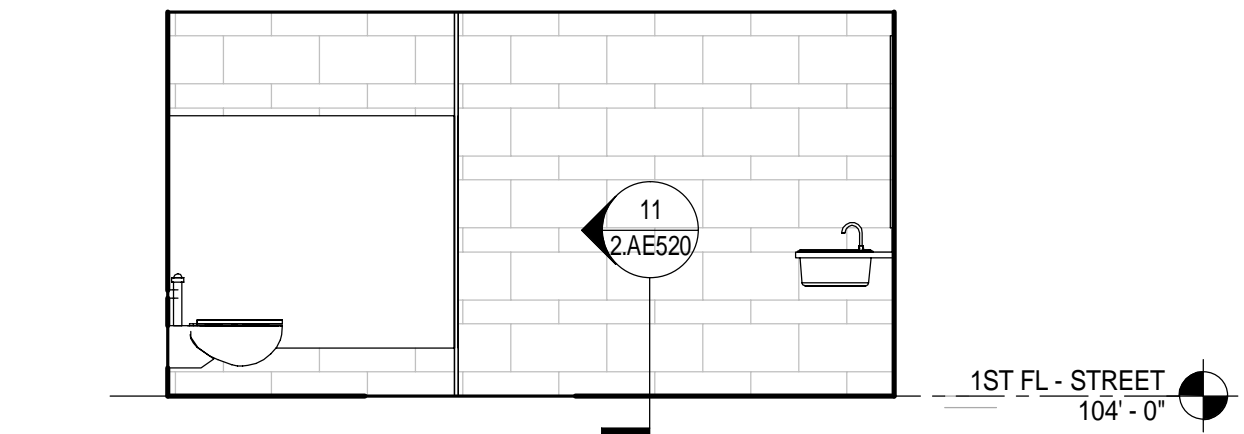
11 1ST FLOOR - MEN'S TOILET - EAST
 1/4" = 1'-0"



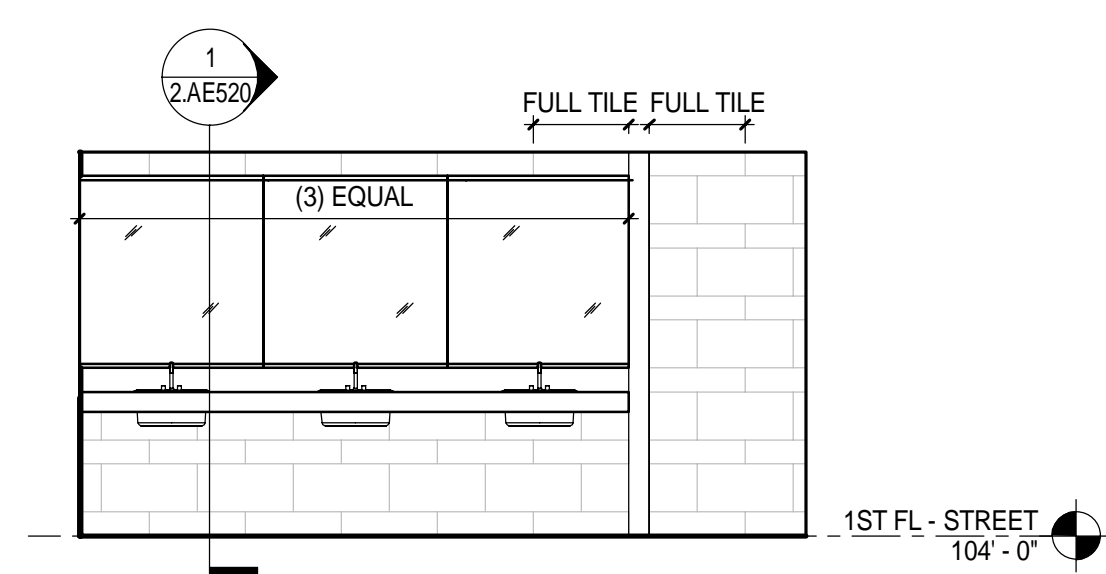
10 1ST FLOOR - MEN'S TOILET - SOUTH
 1/4" = 1'-0"



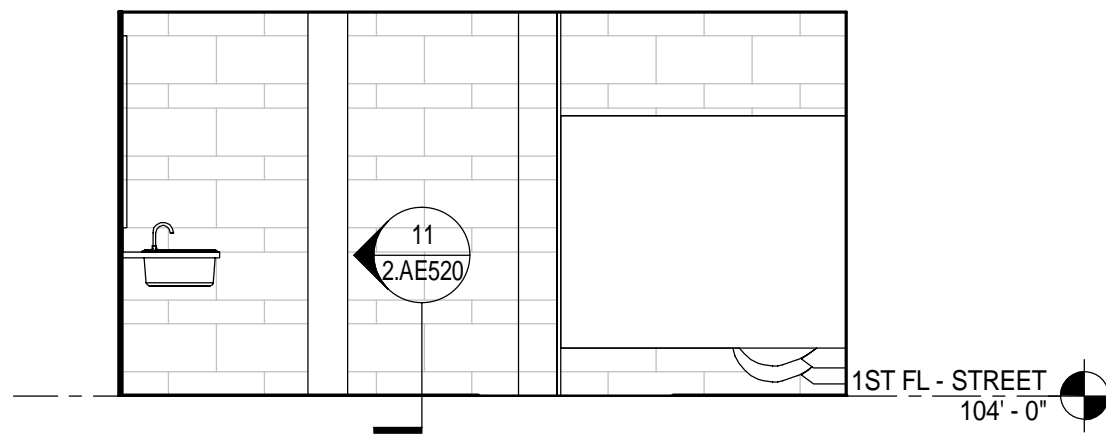
9 1ST FLOOR - MEN'S TOILET - WEST
 1/4" = 1'-0"



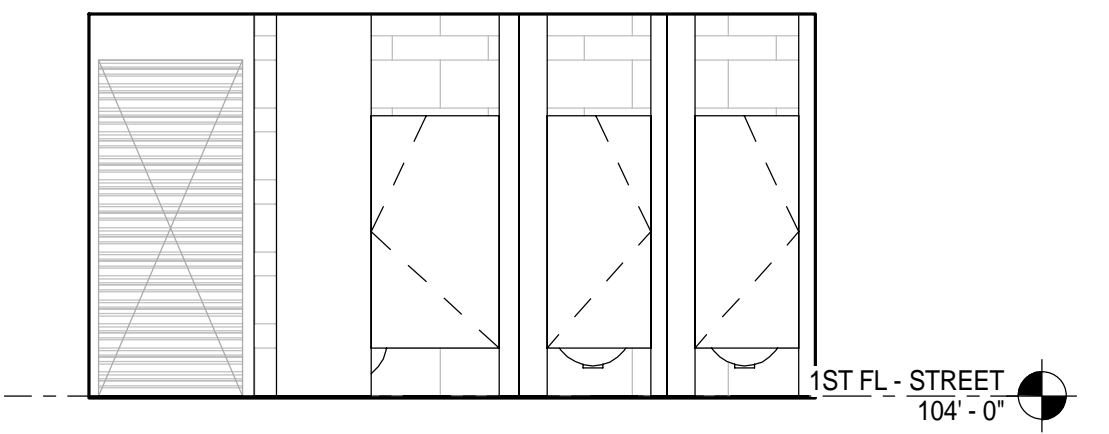
8 1ST FLOOR - WOMEN'S TOILET - NORTH
 1/4" = 1'-0"



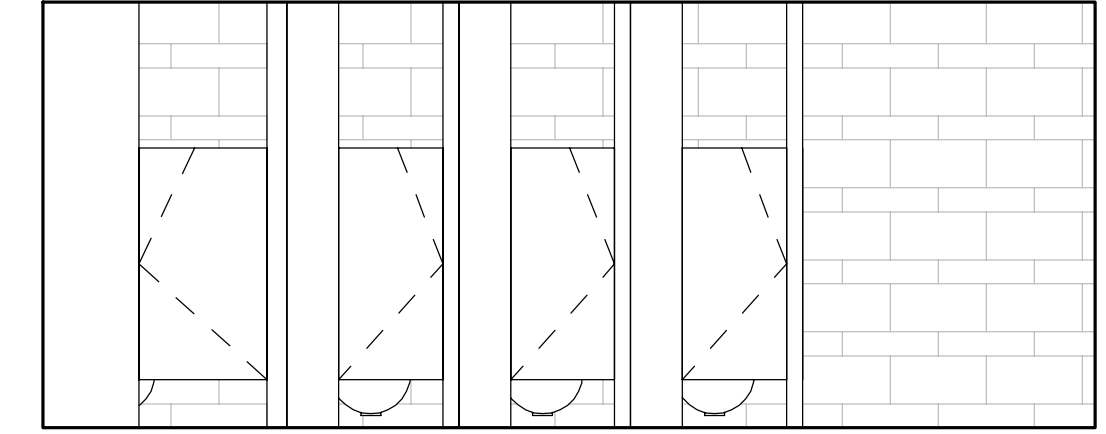
7 1ST FLOOR - WOMEN'S TOILET - EAST
 1/4" = 1'-0"



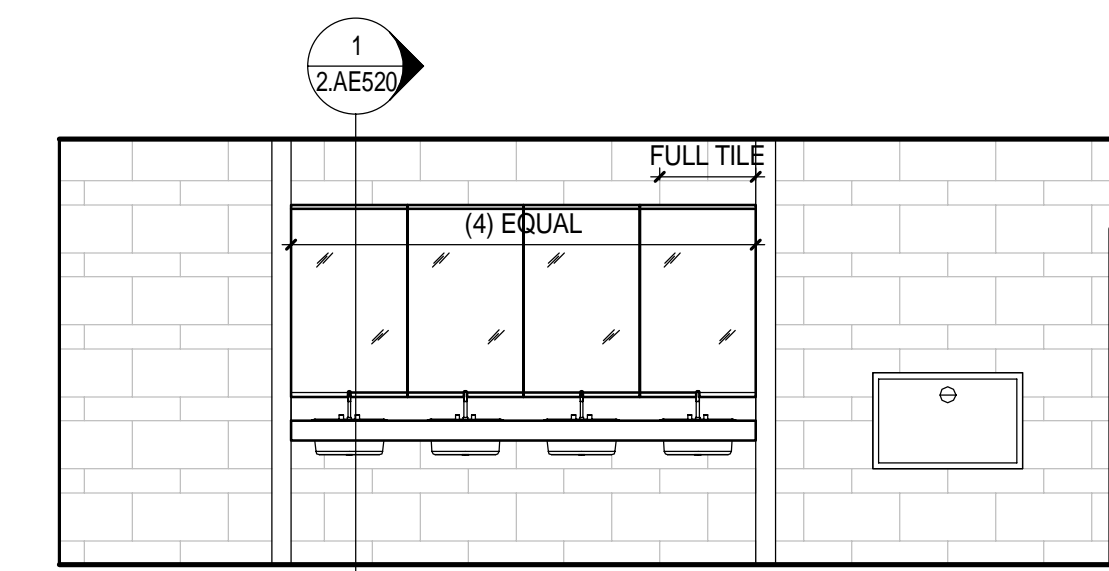
6 1ST FLOOR - WOMEN'S TOILET - SOUTH
 1/4" = 1'-0"



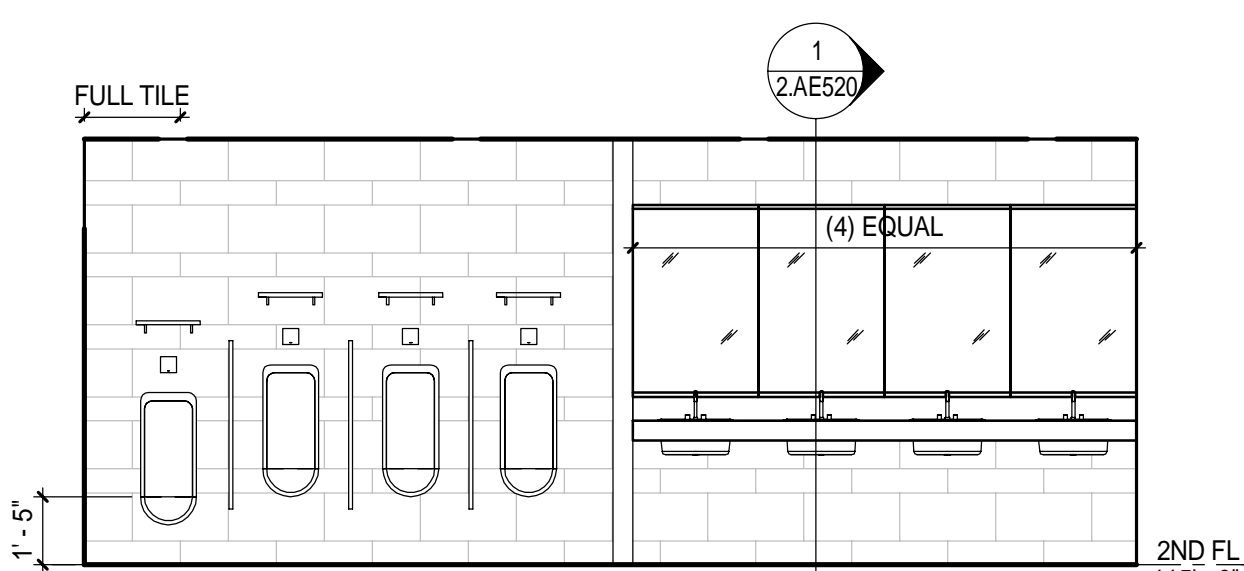
5 1ST FLOOR - WOMEN'S TOILET - WEST
 1/4" = 1'-0"



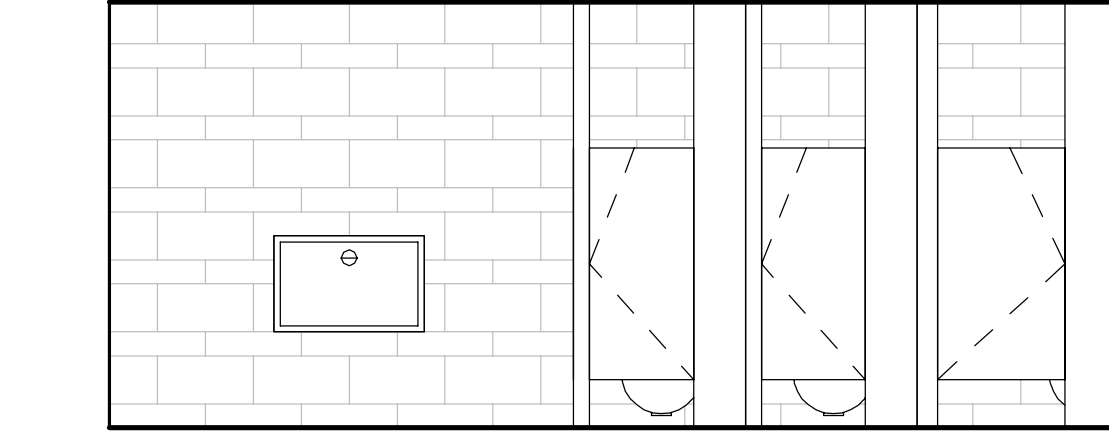
4 2ND FLOOR - WOMEN'S TOILET - EAST
 1/4" = 1'-0"



3 2ND FLOOR - WOMEN'S TOILET - WEST
 1/4" = 1'-0"



2 2ND FLOOR - MEN'S TOILET - EAST
 1/4" = 1'-0"



1 2ND FLOOR - MEN'S TOILET - WEST
 1/4" = 1'-0"