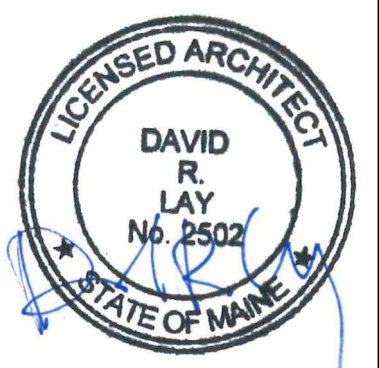
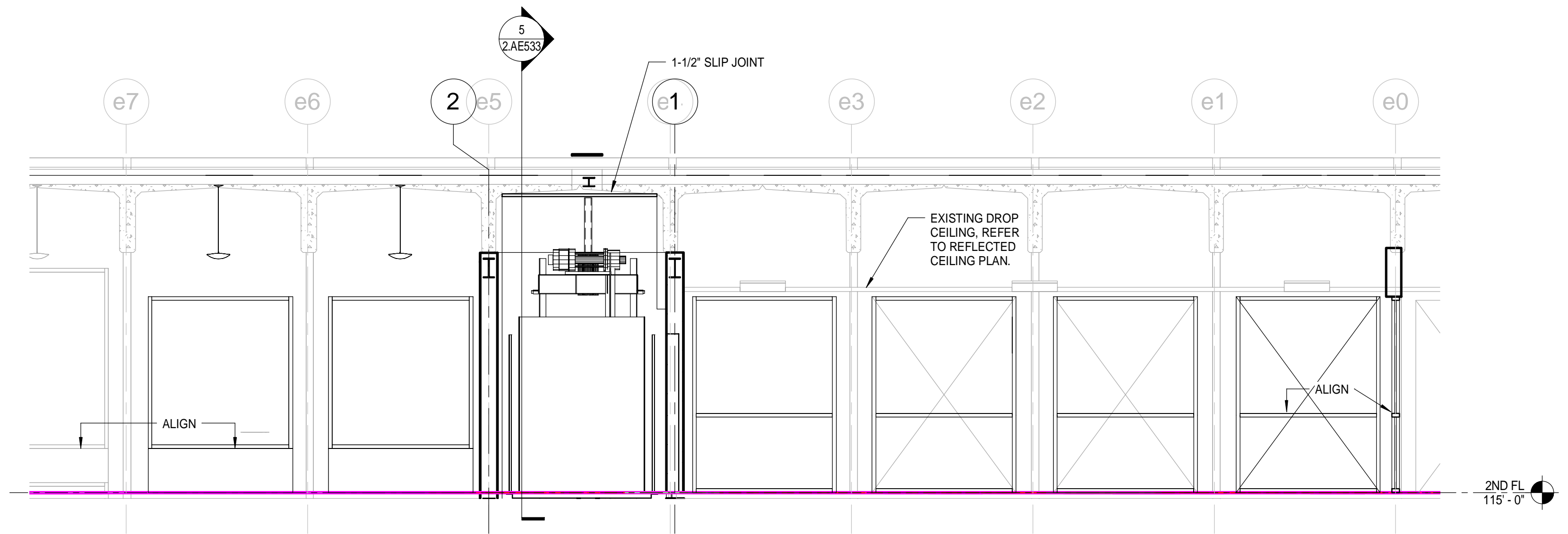


GENERAL NOTES

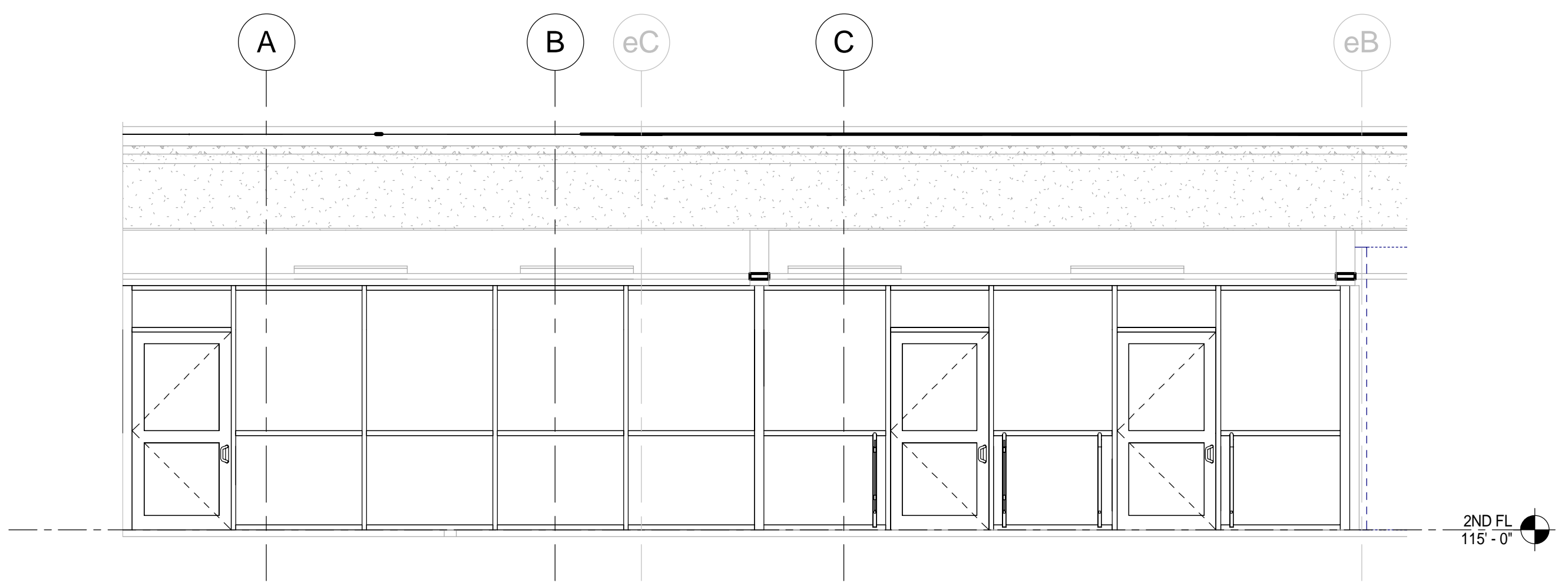
- SEE FLOOR PLANS FOR 'PLAN NOTES'.
- SEE SHEET 2-G-001 FOR GENERAL PROJECT NOTES, LEGENDS, AND ABBREVIATIONS.
- SEE SHEET 2-G-002 FOR WALL TYPES, TOP OF WALL DETAILS, AND GENERAL MOUNTING HEIGHTS.
- FURNITURE AND OWNER PROVIDED EQUIPMENT ARE INDICATED BY DASHED LINE TYPE.
- CONTRACTOR IS RESPONSIBLE FOR THE COORDINATION OF OWNER PROVIDED EQUIPMENT INCLUDING BUT NOT LIMITED TO DIMENSIONAL INFORMATION, AND MECHANICAL, ELECTRICAL, AND PLUMBING REQUIREMENTS.
- CONTRACTOR TO PROVIDE BLOCKING FOR ALL WALL MOUNTED EQUIPMENT INCLUDING THOSE ITEMS NOT IN CONTRACT.



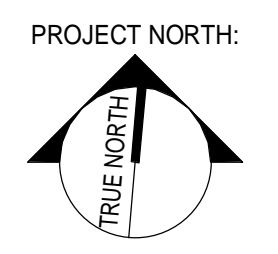
ARCHITECTURE 144 Fore Street P.O. Box 618
 Portland, Maine 04104
 ENGINEERING Tel: (207) 772-3846
 PLANNING Fax: (207) 772-1070
 INTERIORS www.smrtinc.com
 ENERGY
SMRT
 PROJECT NO. 17033
 PROJECT MGR JCDRAWN A/E OF RECORD
 Author
 DFL
 Checker



1 Elevation 1 - d
 1/4" = 1'-0"



2 INT ELEV - 2ND FLOOR
 1/4" = 1'-0"



ISSUED FOR CONSTRUCTION	DATE:	12/21/17
STATUS:	BY:	
THIS PLAN SHALL NOT BE MODIFIED WITHOUT WRITTEN PERMISSION FROM SEBAGO TECHNICS, INC.		
USER'S SOLE RISK AND WITHOUT LIABILITY TO SEBAGO TECHNICS, INC.		

SEBAGO
 TECHNICS
 T E C H N I C S
 WWW.SEBAGOTECHNICS.COM
 75 John Roberts Rd. - Suite 1A 250 Goddard Rd. - Suite B
 South Portland, ME 04086 Portland, ME 04106
 Tel: (207) 200-2100 Fax: (207) 783-6660

PROJECT NO.	FIELD BOOK	DESIGN	CHKD	DRAWN
-------------	------------	--------	------	-------

INTERIOR ELEVATIONS
 OF:
PORTLAND INTERNATIONAL JETPORT
VERTICAL CIRCULATION IMPROVEMENTS
 1001 WESTBROOK STREET
 PORTLAND, MAINE 04102

DATE	SCALE
12/21/17	As indicated

2.AE210