

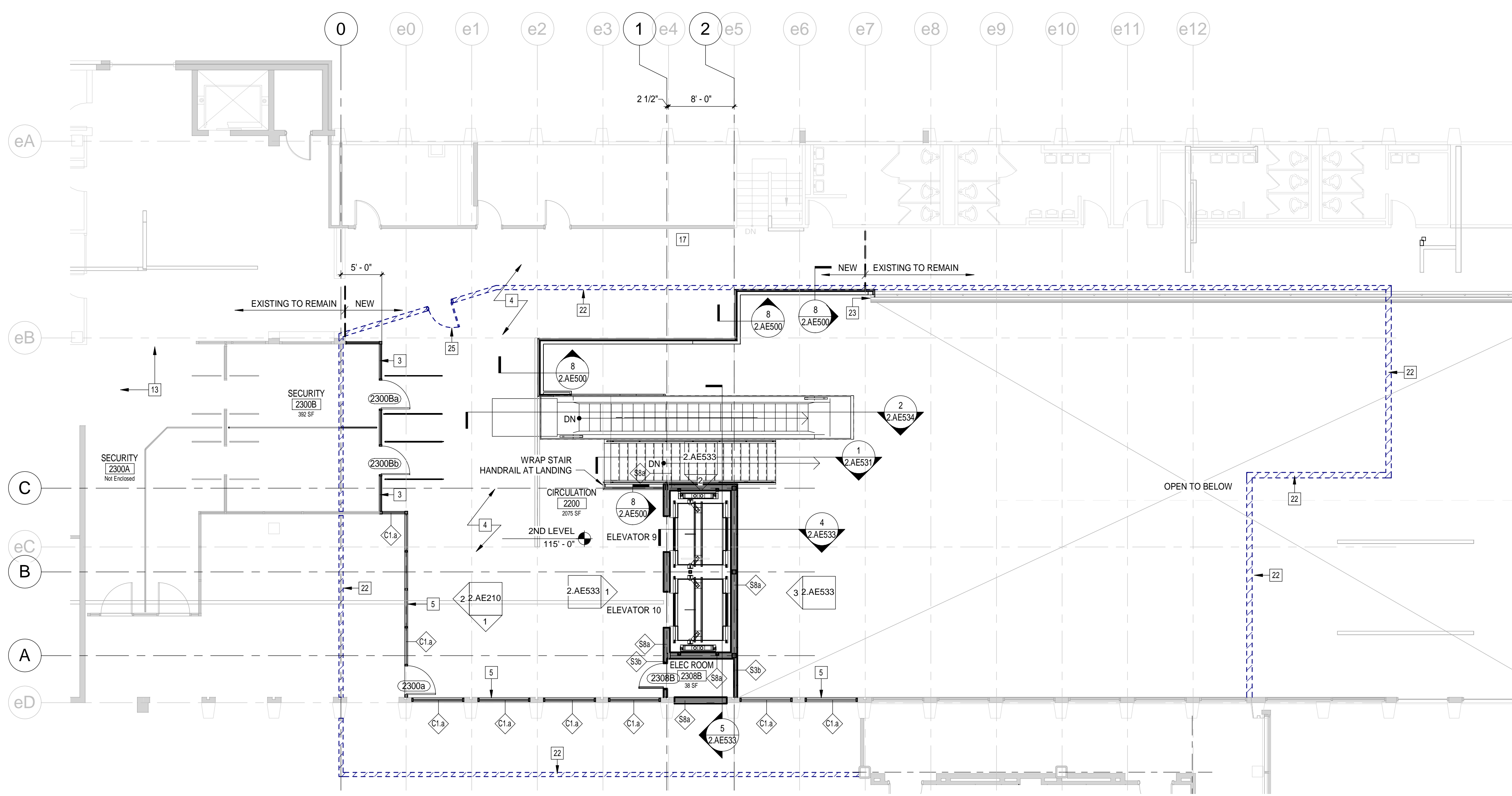
2 2ND FLOOR - RESTROOM FLOOR PLAN
1/8" = 1'-0"

PLAN KEY NOTES

- 1 INFILL WALL TO EXTENTS REQUIRED WHERE DOOR HAS BEEN REMOVED. FLUSH WITH EXISTING WALL ON BOTH SIDES. MATCH EXISTING WALL CONSTRUCTION.
- 2 MECHANICAL GRILLS CENTERED IN GRID. RE: MECH.
- 3 RELOCATE DOORS AND STOREFRONT.
- 4 PROVIDE RUBBER TILE FLOORING TO MATCH EXISTING.
- 5 REINSTALL NEW STOREFRONT.
- 6 DECORATIVE METAL WALL END CAP, SEE 9/2.AE520.
- 7 COVE LIGHTING
- 8 REMOVE ALL FASTENERS, BOXES OR OTHER ITEMS AND REPAIR CONCRETE FOR PAINT. PAINT TO MATCH.
- 9 REFER TO ELECTRICAL FOR LIGHT FIXTURES. CENTER LIGHT FIXTURES IN RECESS TO MATCH EXISTING.
- 10 REINSTALL CEILING AS SHOWN OR PROVIDE MATCHING PANELS/AS REQUIRED FOR CONSISTENT APPEARANCE.
- 11 LIGHT FIXTURE, RE: ELEC.
- 12 RELOCATED EXISTING LIGHT FIXTURE, RE: ELEC.
- 13 TEMPORARILY PROVIDE OPENING FOR PUBLIC AT THIS LOCATION. RELOCATE AT COMPLETION.
- 14 PROVIDE NEW CEILING MOUNTED SIGNS
*DEPARTURES
ALL AIRLINES
TICKETING
TSA SCREENING ---->
ARRIVALS
BAGGAGE CLAIM
←----- GROUND TRANSPORTATION
- 15 REINSTALL SIGN "RESTROOMS"
- 16 - PROVIDE NEW CEILING MOUNTED SIGN: "BAGGAGE CLAIM GROUND TRANSPORTATION"
- 17 REMOVE "ELEVATOR" SIGN AT COMPLETION & REPAIR WALL
- 18 PROVIDE NEW CEILING MONTE SIGN (2 SIDES) "PARKING RENTAL CARS"
- 19 REINSTALL TOILET ROOM ADA SIGNS
- 20 NEW TILE AREA, ROOM 1200 CIRCULATION
- 21 FLOOR DOOR, LOCATED ABOVE EXISTING CONDUITS
- 22 REMOVE TEMPORARY PARTITION AT WORK COMPLETION
- 23 PROVIDE GYPSUM BOARD AND WOOD WALL CAP TO FINISH CUT RAILING END FLAT.
- 24 REPLACE TILES REMOVED OR DAMAGED BY CONSTRUCTION WITH TILE TO MATCH EXISTING.
- 25 TEMPORARY PARTITION DOOR IS TO HAVE A LOCK WITH A KEY PROVIDED TO THE FACILITY

GENERAL NOTES

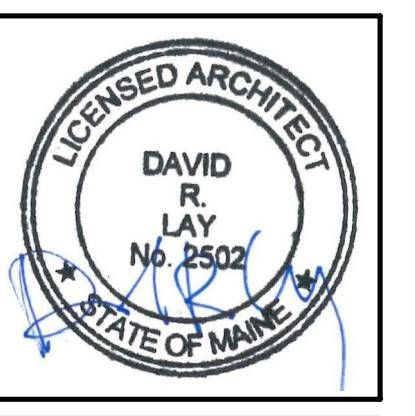
1. SEE SHEET 2.G-001 FOR GENERAL PROJECT NOTES, LEGENDS, AND ABBREVIATIONS.
2. SEE SHEET 2.G-002 FOR WALL TYPES, ROOF TYPES, TOP OF WALL DETAILS, AND GENERAL MOUNTING HEIGHTS.
3. CONTRACTOR IS RESPONSIBLE FOR REVIEWING CODE COMPLIANCE PLANS AND NOTIFYING THE ARCHITECT OF CONFLICTS BETWEEN WHAT IS IN THE FIELD AND ON THE CODE DOCUMENTS.
4. DIMENSIONS ARE FACE OF CONCRETE, FACE OF MASONRY, AND CENTERLINE OF STUD, UNLESS NOTED OTHERWISE.
5. DOOR JAMBS (HINGE SIDE) SHALL BE 6" FROM CORNER IN STUD PARTITIONS AND 8" FROM CORNER IN MASONRY PARTITIONS UNLESS NOTED OTHERWISE.
6. REFER TO DETAILS FOR ADDITIONAL DIMENSIONING INFORMATION. REFER TO ENLARGED PLANS FOR PARTITIONS TYPES AND DIMENSIONS IN AREAS WHICH ARE DETAILED AT A LARGER SCALE.
7. FURNITURE AND OWNER PROVIDED EQUIPMENT ARE INDICATED BY DASHED LINE TYPE.
8. CONTRACTOR IS RESPONSIBLE FOR THE COORDINATION OF OWNER PROVIDED EQUIPMENT INCLUDING BUT NOT LIMITED TO DIMENSIONAL INFORMATION, AND MECHANICAL, ELECTRICAL, AND PLUMBING REQUIREMENTS.



1 2ND FLOOR - FLOOR PLAN
1/8" = 1'-0"

PROJECT NORTH:
TRUE NORTH

KEY PLAN
N.T.S. (F0)



ARCHITECTURE 144 Fore Street, P.O. Box 618
Portland, Maine 04104
Tel: (207) 775-3846
Fax: (207) 775-1070
www.srmlinc.com

ENGINEERING
PLANNING
INTERIORS
ENERGY

PROJECT NO. | PROJECT MGR | JCDRAWN | AE OF RECORD
SMRT PROJECT NO. 17033 | DRL | MOH | DRL

ISSUED FOR CONSTRUCTION	12/21/17	DATE:
STATUS:	0	REV:
THIS PLAN SHALL NOT BE MODIFIED WITHOUT WRITTEN PERMISSION FROM SEBAGO TECHNICS, INC. ALL CHANGES SHALL BE AT THE USER'S RISK AND WITHOUT LIABILITY TO SEBAGO TECHNICS, INC.		

SEBAGO
TECHNICS

WWW.SEBAGOTECHNICS.COM
75 John Roberts Rd., Suite 1A
South Portland, ME 04086
Tel: (207) 775-3846
Fax: (207) 775-1070

PROJECT NO. | FIELD BOOK | DESIGN | CHKD | DRAWN

2ND FLOOR - FLOOR PLAN
OF:
PORTLAND INTERNATIONAL JETPORT
VERTICAL CIRCULATION IMPROVEMENTS
1001 WESTBROOK STREET
PORTLAND, MAINE 04102

DATE	SCALE
12/21/17	As indicated
2.AE102	