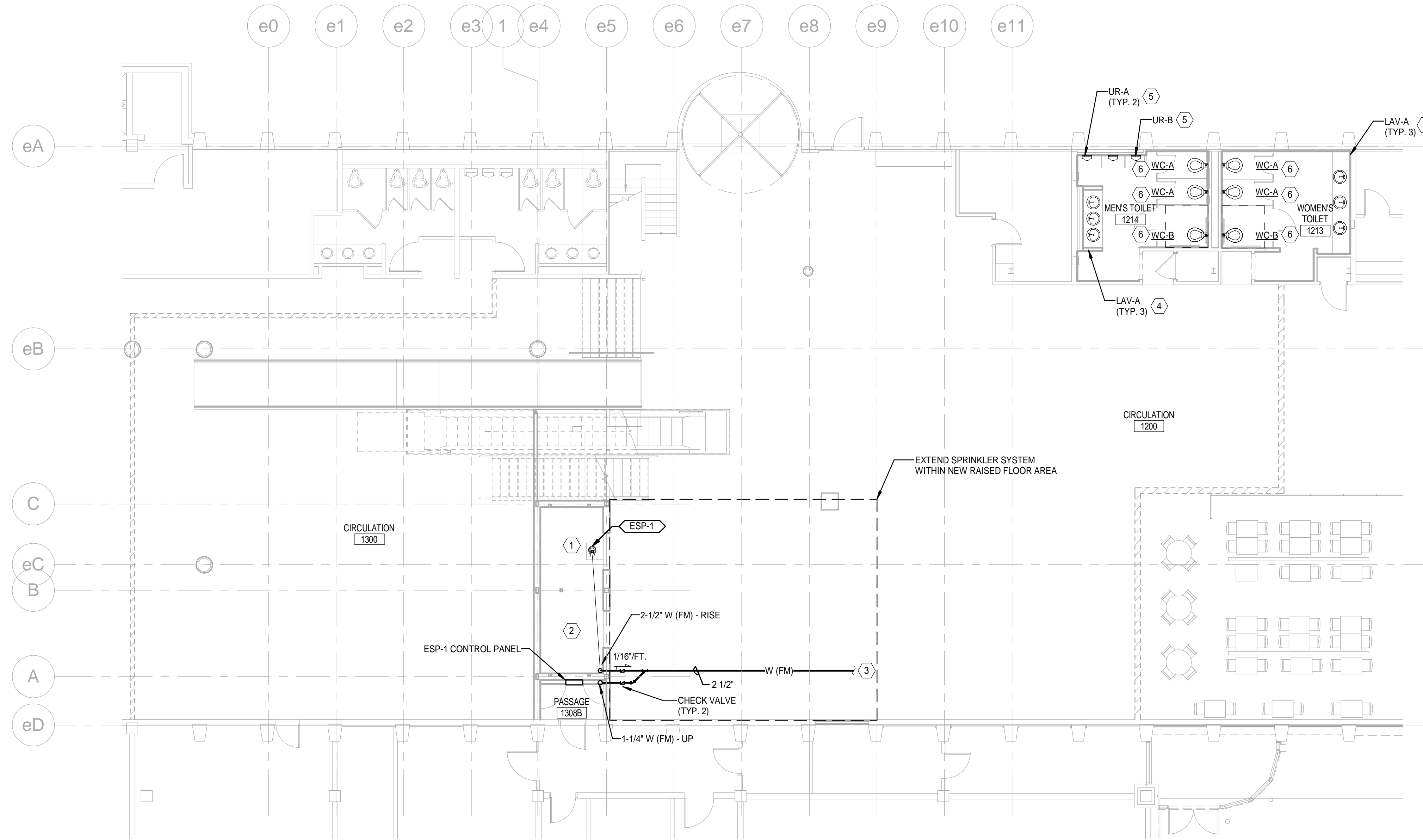


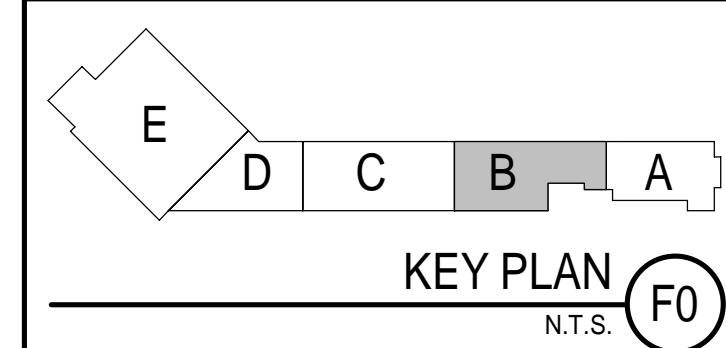
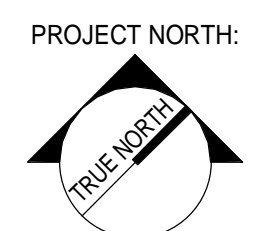
**GENERAL NOTES**

1. SEE SHEET PL001 FOR LEGEND AND ABBREVIATIONS.

KEYNOTE	KEYNOTE DESCRIPTION
1	2-1/2" W (FM) - RISE. PROVIDE WITH GATE VALVE AND CHECK VALVE AT PUMP RISER.
2	COORDINATE EXACT LOCATION AND PENETRATIONS OF ITEMS IN ELEVATOR PIT AND ELEVATOR SHAFT WITH ELEVATOR EQUIPMENT AND EQUIPMENT MANUFACTURER TO ENSURE UNOBSTRUCTED OPERATION OF ELEVATOR.
3	EXTEND 2-1/2" FORCED MAIN (APPROXIMATELY 100' AWAY) TO MECHANICAL ROOM AND TERMINATE AT (E) 6".
4	CONNECT 1/2" CW, 1/2" HW, AND 1-1/2" W TO EXISTING PROVISIONS IN WALL.
5	CONNECT 3/4" CW, 2" V AND, 2" S TO EXISTING PROVISIONS IN WALL. MODIFY AND REWORK EXISTING DWV AS REQUIRED FOR NEW FIXTURE LOCATIONS.
6	CONNECT 1-1/4" CW, 4" S AND, 2" V TO EXISTING PROVISIONS IN CHASE. MODIFY AND RE-WORK EXISTING DWV SYSTEM AS REQUIRED FOR INSTALLATION OF NEW CARRIERS.



**1** 1ST FLOOR - PLUMBING AND FIRE PROTECTION PLAN  
1/8" = 1'-0"



NOT FOR CONSTRUCTION

ARCHITECTURE 144 Fore Street, P.O. Box 618  
Portland, Maine 04104  
tel. (207) 775-3646  
fax. (207) 775-1070  
www.smartinc.com

ENGINEERING  
INTERIORS  
ENERGY

PROJECT NO. 17033  
PROJECT MGR. JCDRAWN  
JC  
DRL  
JC  
KOD  
DATE OF RECORD

**SMART**

REV.	BY	DATE	ISSUED FOR PERMIT
		12/21/17	STATUS:

THIS PLAN SHALL NOT BE MODIFIED WITHOUT WRITTEN PERMISSION FROM SEBAGO TECHNICS, INC. THE USER SHALL BE RESPONSIBLE FOR OBTAINING ALL NECESSARY PERMITS AND WITHOUT LIABILITY TO SEBAGO TECHNICS, INC.

**SEBAGO**  
TECHNICS

WWW.SEBAGOTECHNICS.COM  
75 John Roberts Rd. - Suite 1A  
South Portland, ME 04086  
Tel. (207) 200-2100  
Fax (207) 783-5660

PROJECT NO. | FIELD BOOK | DESIGN | CHKD | DRAWN

1ST FLOOR PLUMBING AND FIRE PROTECTION PLAN OF:  
VERTICAL CIRCULATION IMPROVEMENTS  
1001 WESTBROOK STREET  
PORTLAND, MAINE 04102

DATE	SCALE
12/21/17	1/8" = 1'-0"

2.PL101