

**GENERAL NOTES**

1. SEE SHEET M-001 FOR LEGEND AND ABBREVIATIONS.

KEYNOTE	KEYNOTE DESCRIPTION
1	BALANCE RELOCATED DIFFUSERS TO PROVIDE EQUAL AIRFLOW AT PRE-CONSTRUCTION TAB OF DIFFUSORS RELOCATED.
2	12X10 OED WITH 1/2" WMS.
3	PROVIDE REMOTE SENSOR AT TOP OF ELEVATOR SHAFT.
4	LOCATE THERMOSTAT IN LOCK BOX. CONFIRM EXACT LOCATION WITH OWNER. THERMOSTAT TO CONTROL UNIT BASED ON TEMPERATURE DETECTED BY REMOTE SENSOR AT TOP OF SHAFT.
5	COORDINATE EXACT LOCATION OF ITEMS IN ELEVATOR SHAFT WITH ELEVATOR EQUIPMENT MANUFACTURER TO ENSURE UNOBSTRUCTED OPERATION OF ELEVATOR.
6	RELOCATED EXISTING RGD INTO NEW CEILING GRID.
7	CONNECT TO EXISTING DUCT CONNECTIONS AND TRANSITION AT GRILLE AS REQUIRED. BALANCE TO AIR FLOW DETERMINED DURING PRE-CONSTRUCTION TAB.
8	CONNECT NEW 3/4" HWS/R TO EXISTING PROVISIONS PROVIDED UNDER DEMO. PROVIDE WITH NEW CONTROL AND BALANCING VALVES. SEE DETAIL 4M-501.

NOT FOR CONSTRUCTION

ARCHITECTURE 144 Fore Street P.O. Box 618  
Portland, Maine 04104  
tel. (207) 775-3646  
fax. (207) 772-1070  
www.smartinc.com

ENGINEERING  
INTERIORS  
ENERGY

SMART PROJECT NO. | PROJECT MGR | JC/DRAWN | AE OF RECORD  
17033 | DRL | JC | KOD

REV.	BY:	DATE:	ISSUED FOR PERMIT
		12/21/17	
THIS PLAN SHALL NOT BE MODIFIED WITHOUT WRITTEN PERMISSION FROM SEBAGO TECHNICS, INC. USER'S LIABILITY TO SEBAGO TECHNICS, INC.			

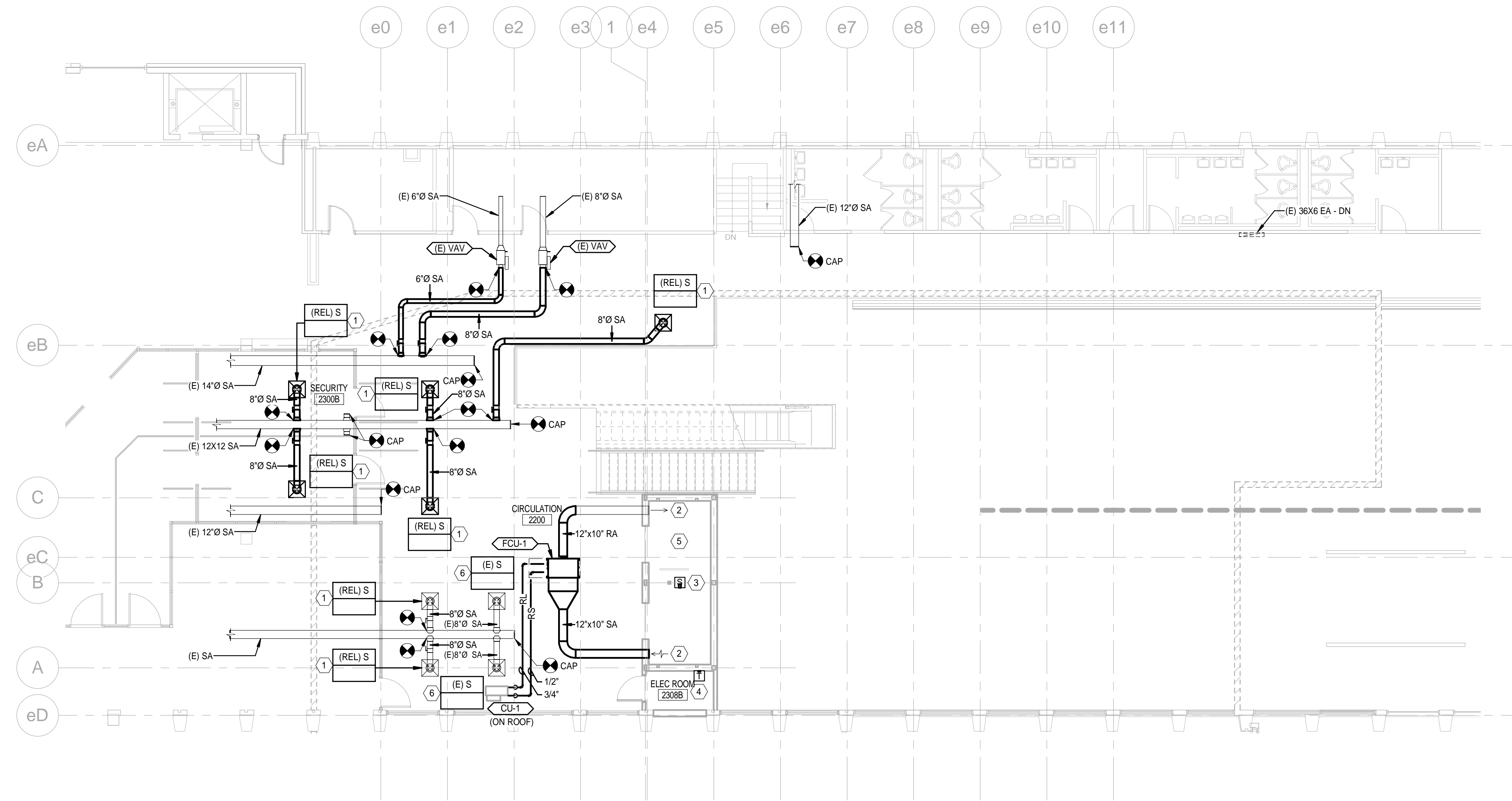
**SEBAGO TECHNICS**

WWW.SEBAGOTECHNICS.COM  
75 John Roberts Rd., Suite 1A  
South Portland, ME 04086  
Tel: (207) 775-3646  
Fax: (207) 772-1070

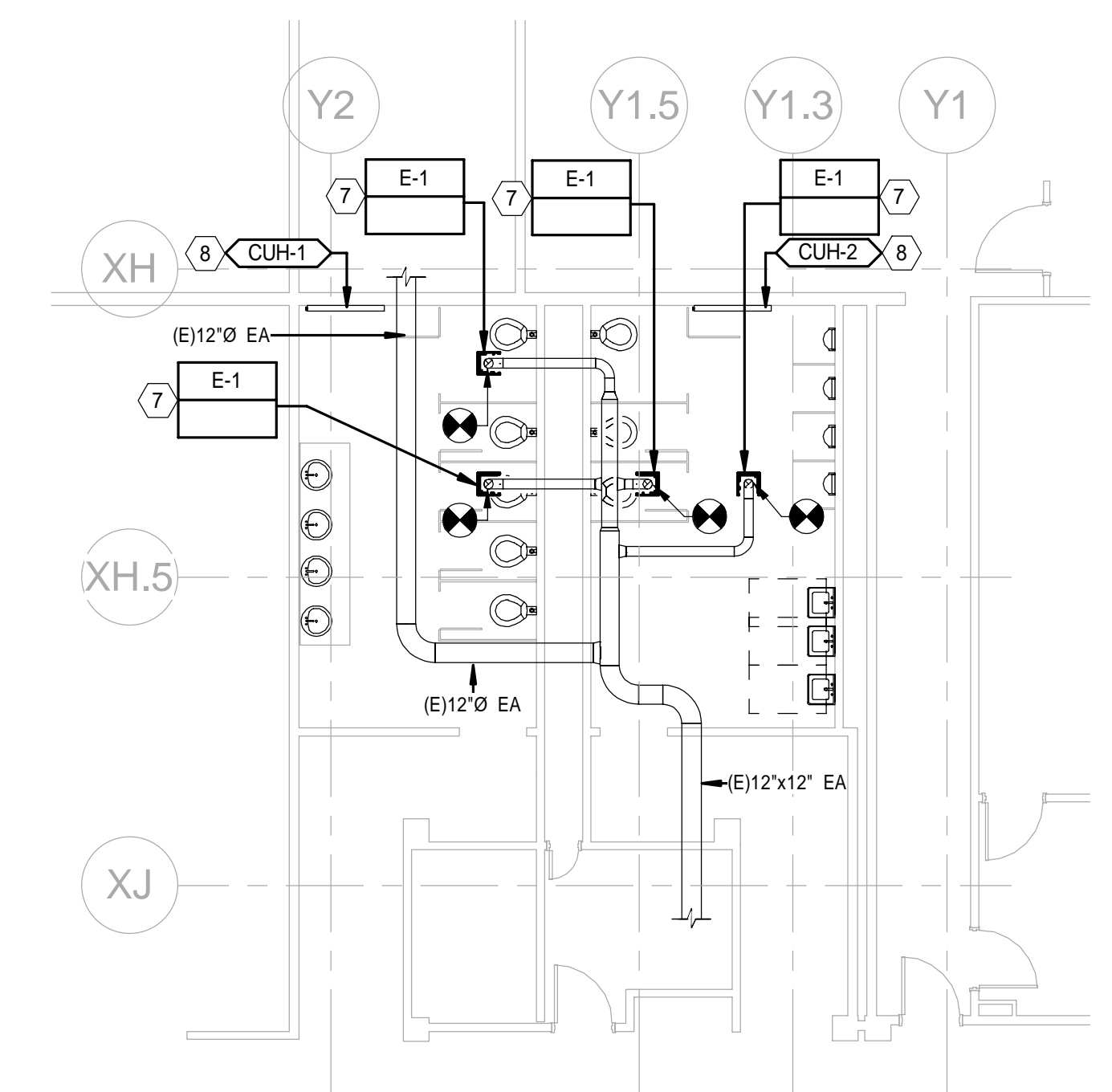
PROJECT NO. | FIELD BOOK | DESIGN | CHKD | DRAWN

2ND FLOOR HVAC DUCTWORK PLAN  
OF:  
VERTICAL CIRCULATION IMPROVEMENTS  
1001 WESTBROOK STREET  
PORTLAND, MAINE 04102

DATE	SCALE
12/21/17	1/8" = 1'-0"
2.MH102	



1 2ND FLOOR - HVAC DUCTWORK PLAN  
1/8" = 1'-0"



2 2ND FLOOR - HVAC DUCTWORK RESTROOM PLAN  
1/8" = 1'-0"

