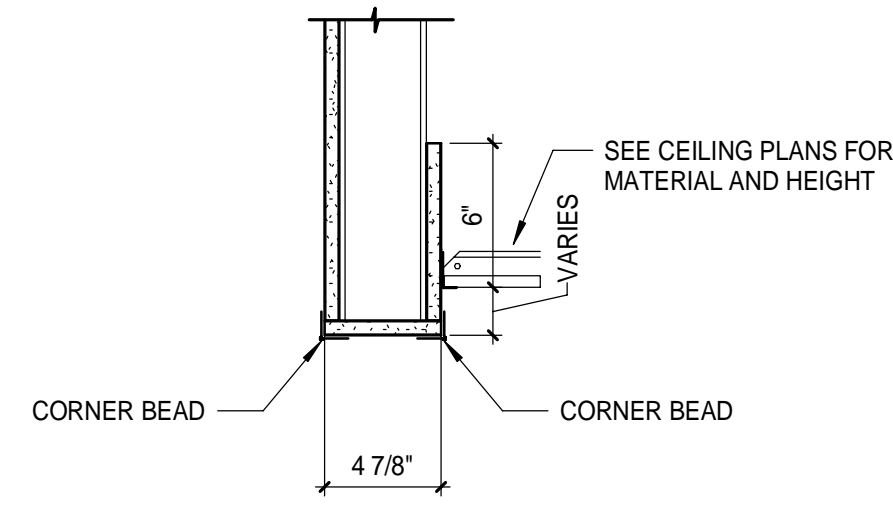


ISSUED FOR PERMIT	DATE: 12/21/17
STATUS:	BY:
THIS PLAN SHALL NOT BE MODIFIED WITHOUT WRITTEN PERMISSION FROM SEBAGO TECHNICS, INC. ALL RIGHTS RESERVED. NO LIABILITY TO SEBAGO TECHNICS, INC. FOR ANY ERRORS OR OMISSIONS.	

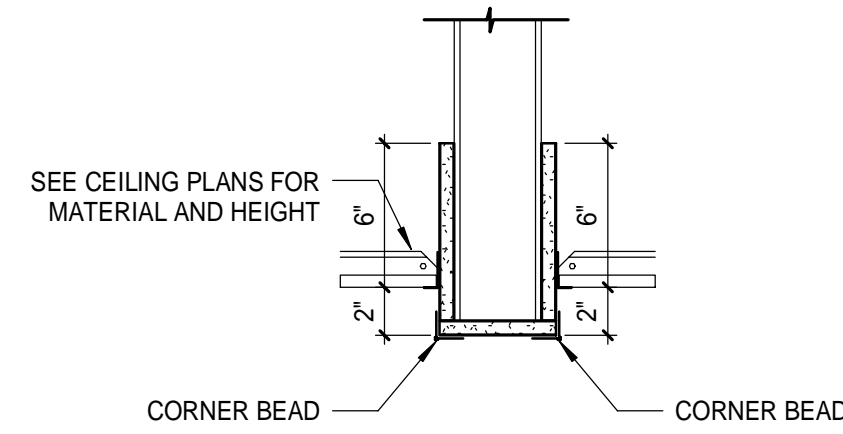
PROJECT NO.	FIELD BOOK	DESIGN	CHKD	DRAWN
<p>SEBAGO TECHNICS WWW.SEBAGOTECHNICS.COM 75 John Roberts Rd., Suite 1A South Portland, ME 04086 Tel: (207) 775-3846 Fax: (207) 775-1070</p>				

MOUNTING HEIGHTS, WALL AND ROOF TYPES,
 TOP OF WALL DETAILS
 OF:
 PORTLAND INTERNATIONAL JETPORT
 VERTICAL CIRCULATION IMPROVEMENTS
 1001 WESTBROOK STREET
 PORTLAND, MAINE 04102

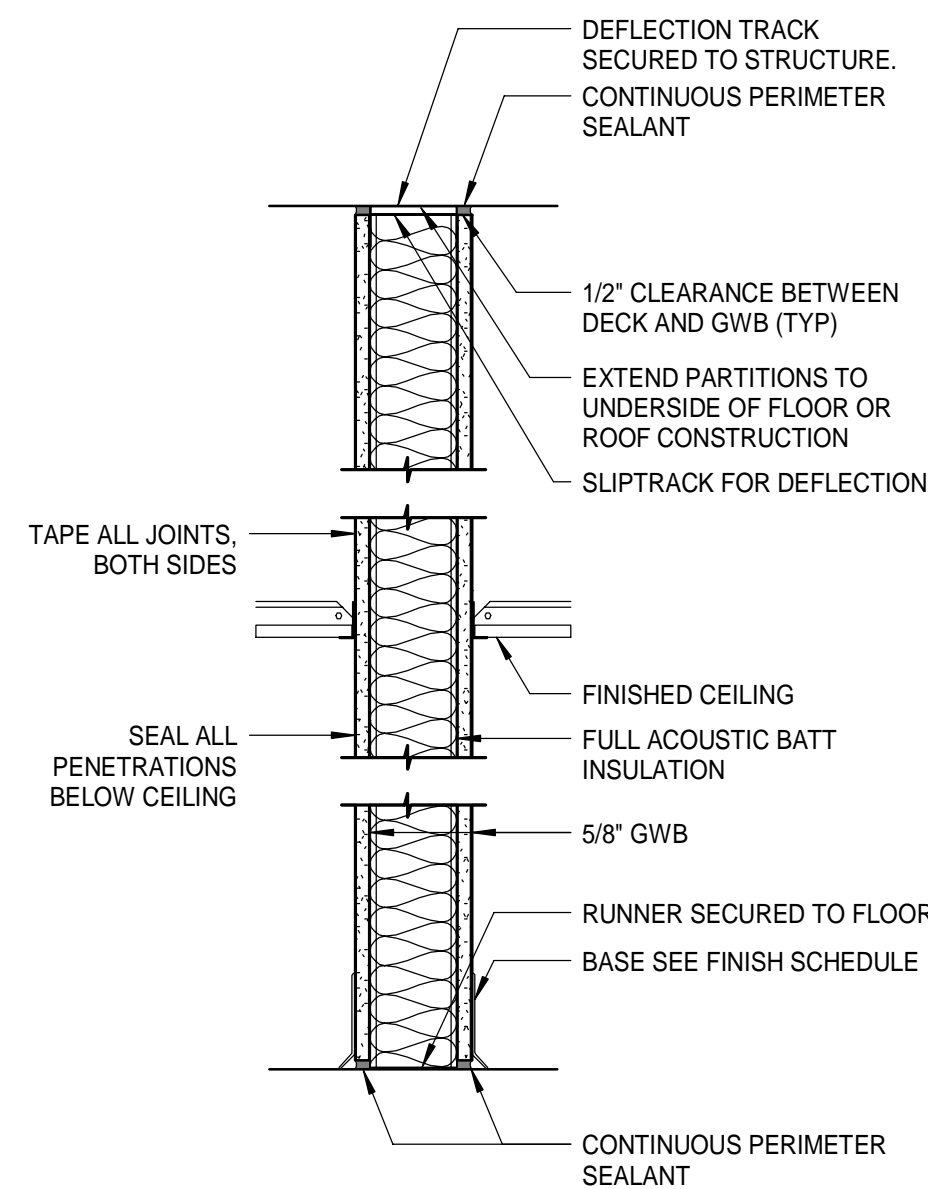
DATE	SCALE
12/21/17	As indicated



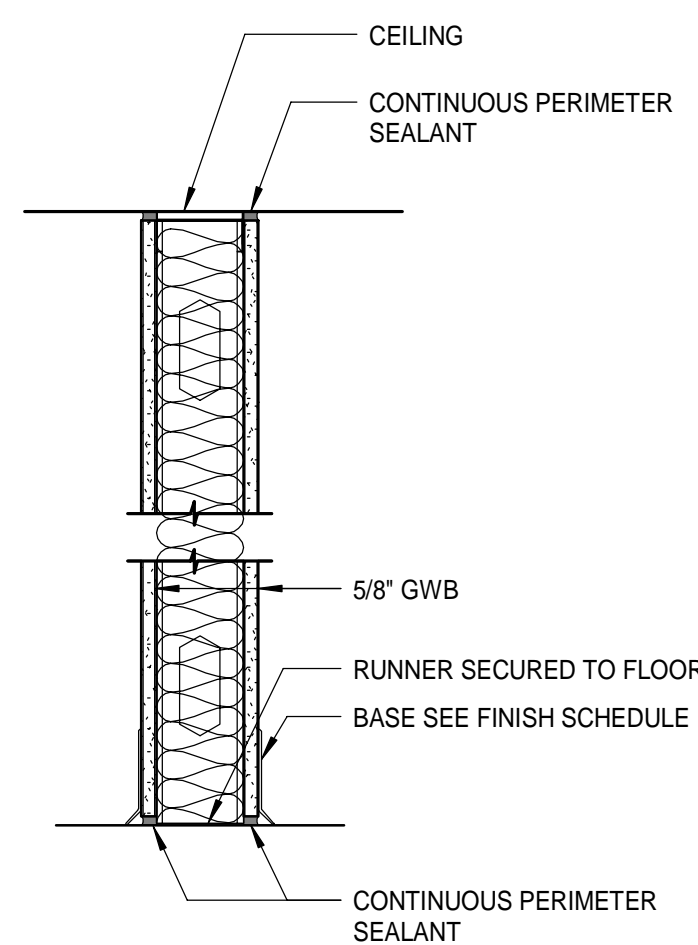
3 SOFFIT DETAIL
 1 1/2" = 1'-0"



4 SOFFIT DETAIL
 1 1/2" = 1'-0"

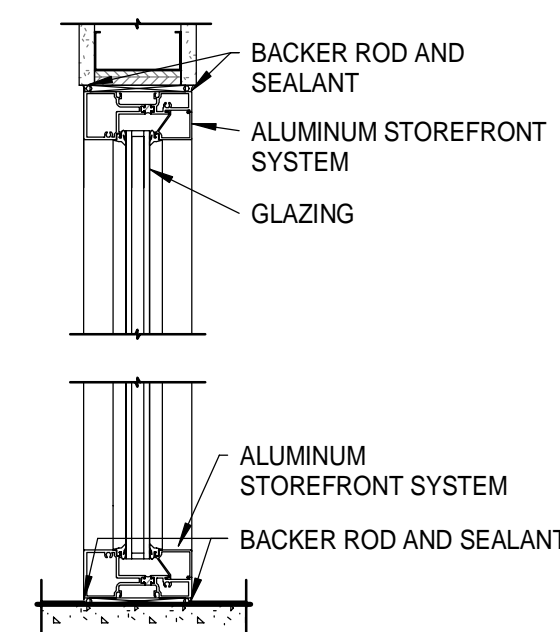


TYPE S8.a NON-RATED
 (STC 45) ONE LAYER 5/8" GWB EACH SIDE OF 8" METAL STUDS.

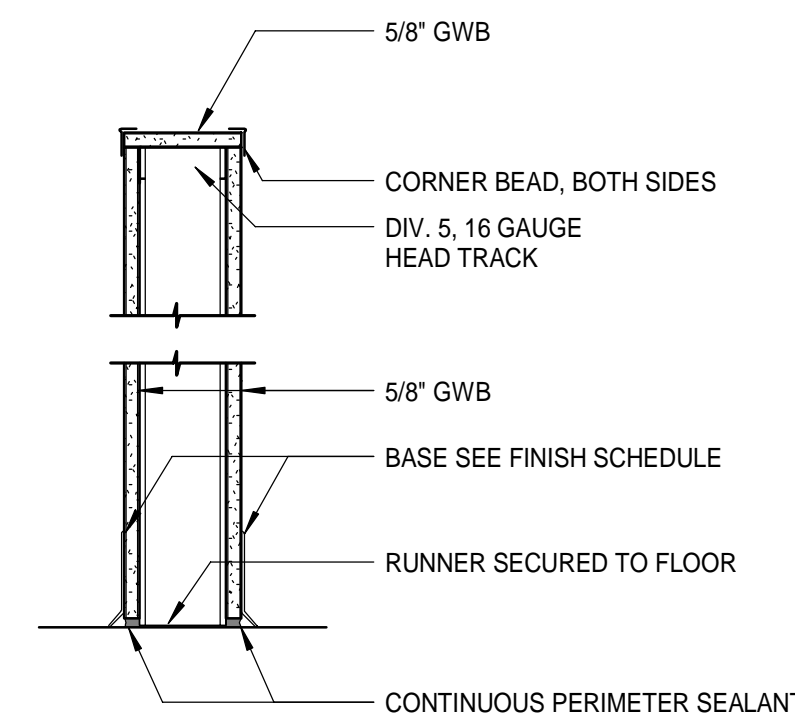


TYPE S3.b NON-RATED
 (STC 45) ONE LAYER 5/8" GWB EACH SIDE OF 3 5/8" METAL STUDS TO EXISTING CEILING.

TYPE S6.b NON-RATED
 (STC 45) ONE LAYER 5/8" GWB EACH SIDE OF 6" METAL STUDS TO EXISTING CEILING.

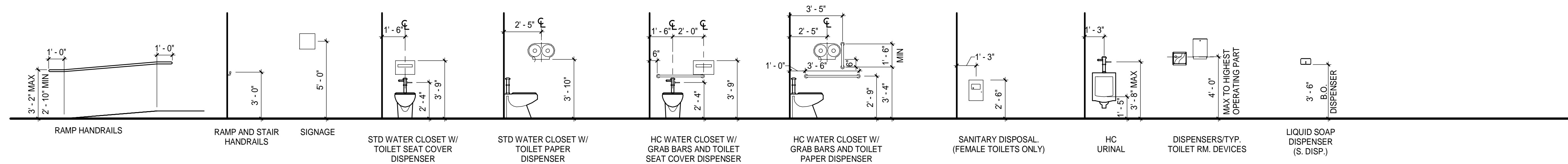


TYPE C1.a NON-RATED
 STOREFRONT



TYPE P6 NON-RATED
 (STC 45) ONE LAYER 5/8" GWB EACH SIDE OF 6" METAL STUDS.

2 WALL TYPES
 1 1/2" = 1'-0"



1 TYPICAL MOUNTING HEIGHTS
 1/4" = 1'-0"