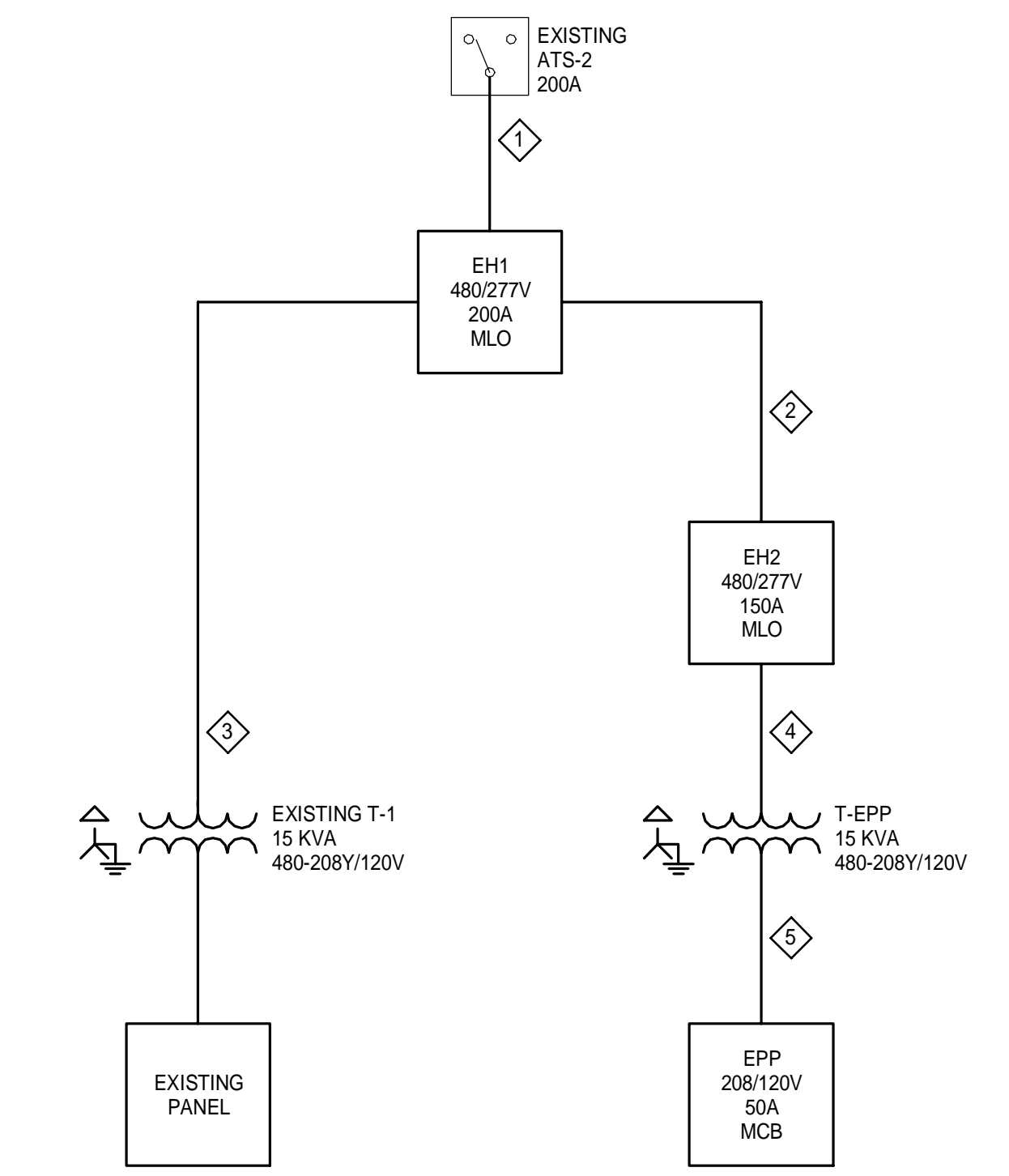


DIRECTORY	KVA LOAD			CKT NO.	BKR AMPS	A	B	C	BKR AMPS	CKT NO.	KVA LOAD			DIRECTORY	
	A	B	C								A	B	C		
PANELBOARD EH2	*	*	*	1	150					2	*	*	*	EXISTING 45 KVA TRANSFORMER	
SPACE	*	*	*	3						4	*	*	*		
SPACE	*	*	*	5						6	*	*	*		
SPACE	*	*	*	7						8	*	*	*	SPACE	
SPACE	*	*	*	9						10	*	*	*	SPACE	
SPACE	*	*	*	11						12	*	*	*	SPACE	
SPACE	*	*	*	13						14	*	*	*	SPACE	
SPACE	*	*	*	15						16	*	*	*	SPACE	
SPACE	*	*	*	17						18	*	*	*	SPACE	
SPACE	*	*	*	19						20	*	*	*	SPACE	
SPACE	*	*	*	21						22	*	*	*	SPACE	
SPACE	*	*	*	23						24	*	*	*	SPACE	
SUB-TOTAL	*	*	*								*	*	*	SUB-TOTAL	
VOLTAGE: 480/277V 3 PHASE 4 WIRE 225 AMP BUS												TOTAL KVA A	*	PANEL NO.	EH1
MAIN LUGS ONLY 200 AMP LUGS												TOTAL KVA B	*	LOCATION	PENTHOUSE
MOUNTING: SURFACE												TOTAL KVA C	*		
SC RATING: 42,000 AIC												TOTAL KVA	*		
NOTES:															

DIRECTORY	KVA LOAD			CKT NO.	BKR AMPS	A	B	C	BKR AMPS	CKT NO.	KVA LOAD			DIRECTORY	
	A	B	C								A	B	C		
(1) ELEVATOR #1	*	*	*	1	80					20	*	*	*	LTG ELECTRICAL RM	
	*	*	*	3						4	*	*	*	LTG ELEVATOR HOISTWAY	
	*	*	*	5						6	*	*	*	SPARE	
	*	*	*	7						8	*	*	*		
ESCLATOR #1	*	*	*	9	50					10	*	*	*	PANELBOARD EPP	
	*	*	*	11						12	*	*	*		
	*	*	*	13						14	*	*	*		
SPARE	*	*	*	15	20					16	*	*	*	ELEVATOR #2 (1)	
SPACE	*	*	*	17						18	*	*	*		
SPACE	*	*	*	19						20	2.0	*	*		
SPACE	*	*	*	21						22	2.0	*	*	PANELBOARD EPP	
SPACE	*	*	*	23						24	*	*	*		
SPACE	*	*	*	25						26	0.9	*	*		
SPACE	*	*	*	27						28	0.9	*	*	ELEVATOR PIT SUMP	
SPACE	*	*	*	29						30	0.9	*	*		
SUB-TOTAL	*	*	*								*	*	*	SUB-TOTAL	
VOLTAGE: 480/277V 3 PHASE 4 WIRE 200 AMP BUS												TOTAL KVA A	*	PANEL NO.	EH2
MAIN LUGS ONLY 150 AMP LUGS												TOTAL KVA B	*	LOCATION	ELECTRICAL RM
MOUNTING: SURFACE												TOTAL KVA C	*		
SC RATING: 25,000 AIC												TOTAL KVA	*		
NOTES: (1) PROVIDE WITH A SHUNT TRIP CIRCUIT BREAKER.															

DIRECTORY	KVA LOAD			CKT NO.	BKR AMPS	A	B	C	BKR AMPS	CKT NO.	KVA LOAD			DIRECTORY	
	A	B	C								A	B	C		
ELEVATOR CAB LTG	0.2	*	*	1	20					2	*	*	*	SPARE	
ELEVATOR PIT RECEPITS		0.4	*	3	20					4	*	*	*	SPARE	
ELECTRICAL RM RECEPITS			0.4	5	20					6	*	*	*	SPARE	
SPARE				7	20					8	*	*	*	SPARE	
SPARE				9	20					10	*	*	*	SPARE	
SPACE				11	20					12	*	*	*	SPARE	
SPACE				13						14	*	*	*	SPACE	
SPACE				15						16	*	*	*	SPACE	
SPACE				17						18	*	*	*	SPACE	
SPACE				19						20	*	*	*	SPACE	
SPACE				21						22	*	*	*	SPACE	
SPACE				23						24	*	*	*	SPACE	
SUB-TOTAL	*	*	*								*	*	*	SUB-TOTAL	
VOLTAGE: 208Y/120V 3 PHASE 4 WIRE 100 AMP BUS												TOTAL KVA A	*	PANEL NO.	EPP
MAIN BREAKER 50 AMP TRIP												TOTAL KVA B	*	LOCATION	ELECTRICAL RM
MOUNTING: SURFACE												TOTAL KVA C	*		
SC RATING: 10,000 AIC												TOTAL KVA	*		
NOTES:															



1 ONE-LINE DIAGRAM
NONE

NOTES:
1. SEE SHEET 2.E-001 FOR LEGEND AND GENERAL NOTES.

CABLE SCHEDULE:

1	4#3/0 AWG & #6 GND, 2°C
2	4#1/0 AWG & #6 GND, 2°C
3	3#4 AWG & #8 GND, 1 1/4°C
4	3#10 AWG & #10 GND, 3/4°C
5	4#8 AWG & #10 GND, 3/4°C

NOT FOR CONSTRUCTION

ARCHITECTURE 144 Fore Street P.O. Box 618
Portland, Maine 04104
tel. (207) 772-3846
fax. (207) 772-1070
www.smartinc.com

ENGINEERING
PLANNING
INTERIORS
ENERGY

SMART PROJECT NO. PROJECT MGR. JCDRAWN A/E OF RECORD
17033 DRD CDS DJT

REV.	BY:	DATE:	ISSUED FOR PERMIT
		12/21/17	STATUS:
THIS PLAN SHALL NOT BE MODIFIED WITHOUT WRITTEN PERMISSION FROM SEBAGO TECHNOLOGIES, INC. ALL SHALL BE AT THE USER'S SOLE RISK AND WITHOUT LIABILITY TO SEBAGO TECHNOLOGIES, INC.			

SEBAGO TECHNOLOGIES
WWW.SEBAGOTECHNICS.COM
75 John Roberts Rd., Suite 1A
Saco, Maine 04072
Tel. 207-200-2100
Tel. 207-783-6666

PROJECT NO. FIELD BOOK DESIGN CHKD DRAWN

ONE-LINE DIAGRAM AND PANEL SCHEDULES
OF:
PORTLAND INTERNATIONAL JETPORT
VERTICAL CIRCULATION IMPROVEMENTS
1001 WESTBROOK STREET
PORTLAND, MAINE 04102

DATE	SCALE
10-27-17	NONE

2.EP601