

NOT FOR CONSTRUCTION

ARCHITECTURE 144 Fore Street P.O. Box 618  
 Portland, Maine 04104  
 ENGINEERING tel. (207) 772-3846  
 PLANNING fax. (207) 772-1070  
 INTERIORS www.smrtinc.com  
 ENERGY

**SMART**

SMRT PROJECT NO. PROJECT MGR. L.C. DRAWN BY AE OF RECORD  
 17033 DRL CDS DJT

ISSUED FOR PERMIT	DATE: 12/21/17
STATUS:	BY:
THIS PLAN SHALL NOT BE MODIFIED WITHOUT WRITTEN PERMISSION FROM SEBAGO TECHNICS, INC. THE USER SHALL BE AT THE USER'S SOLE RISK AND WITHOUT LIABILITY TO SEBAGO TECHNICS, INC.	

**SEBAGO TECHNICS**

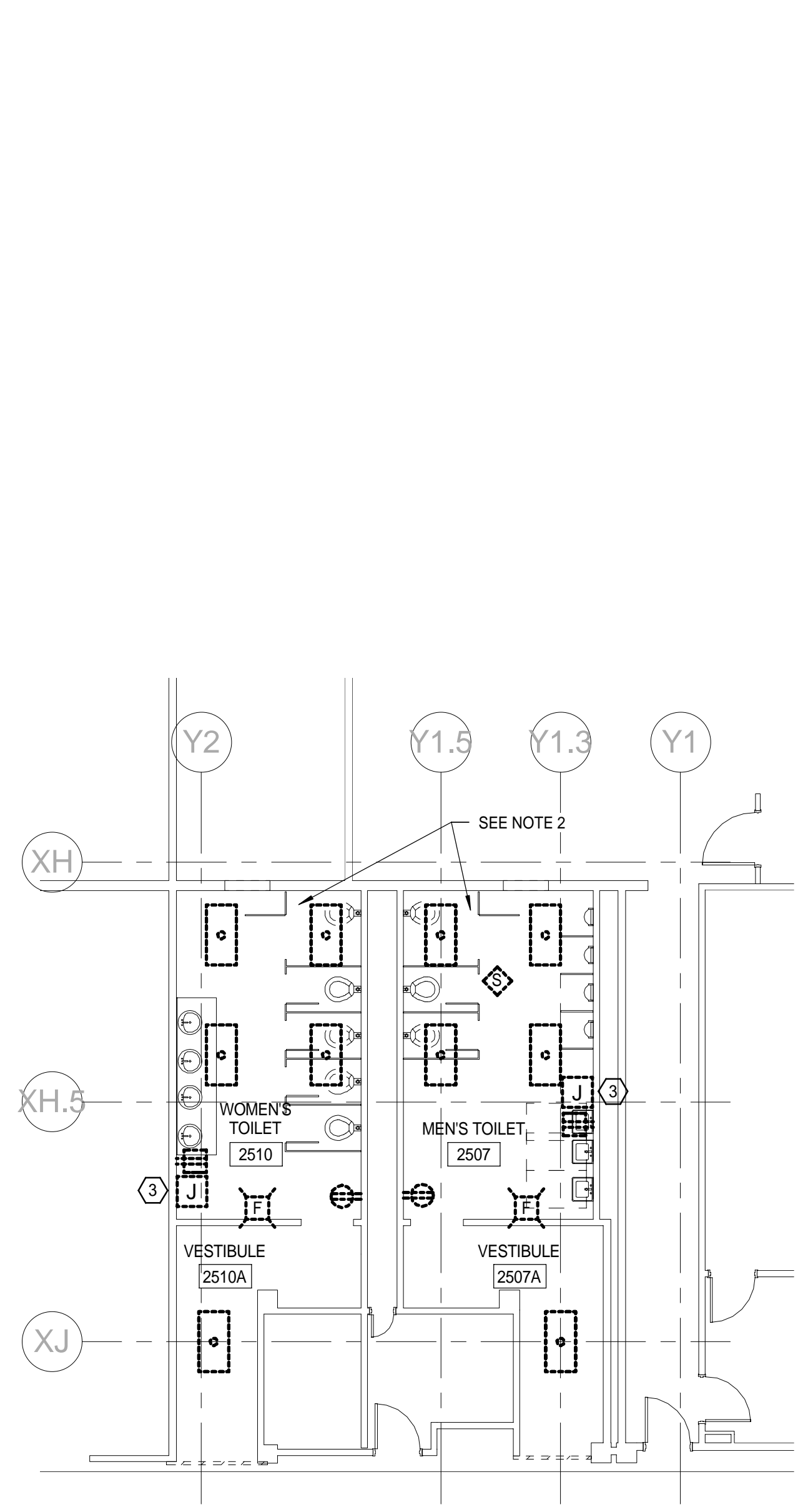
WWW.SEBAGOTECHNICS.COM  
 75 John Roberts Rd., Suite 1A  
 Scarborough, ME 04074  
 Tel. 207.283.5666

PROJECT NO. FIELD BOOK DESIGN CHKD DRAWN

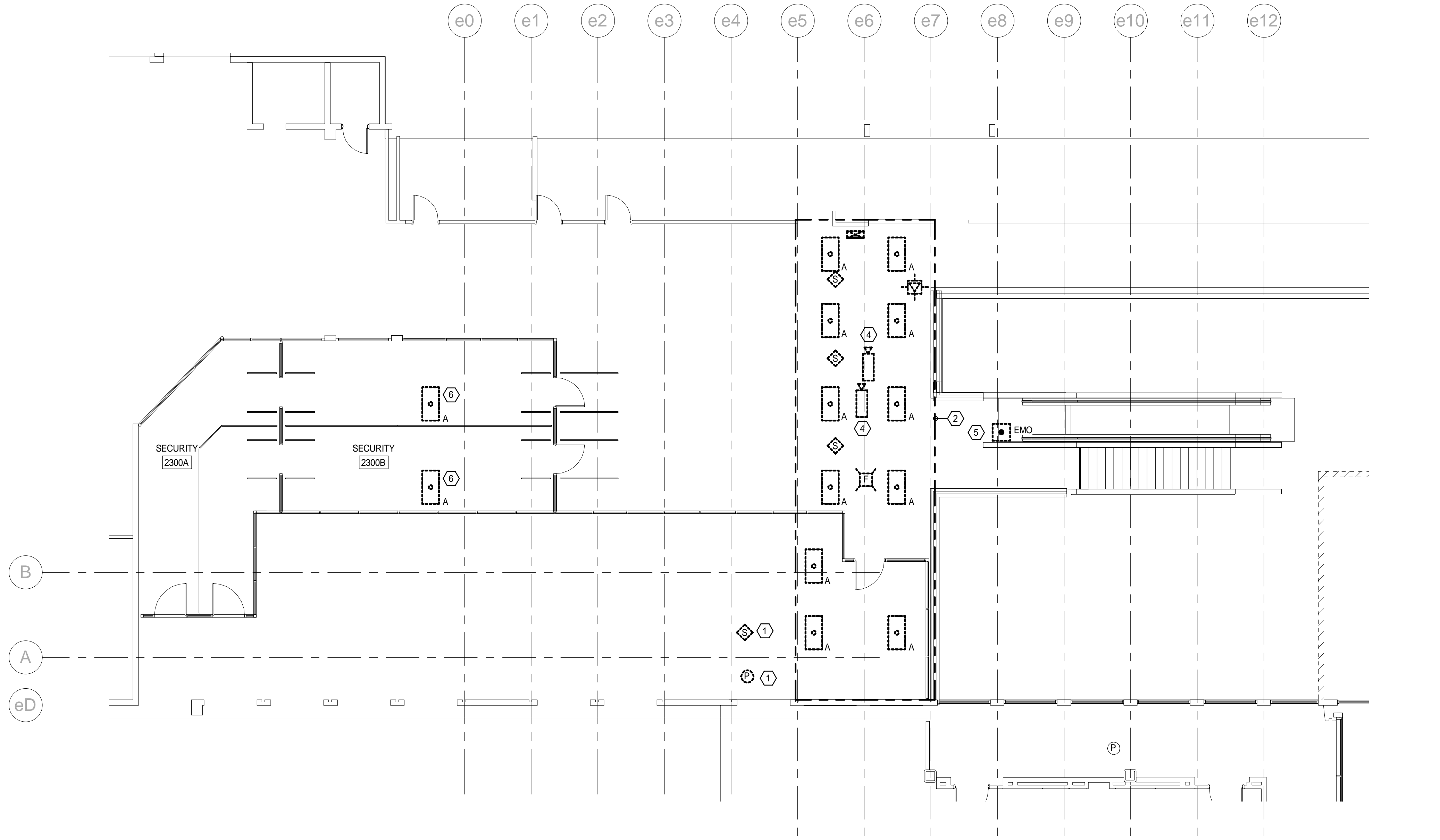
2ND FLOOR - DEMOLITION PLAN  
 OF:  
 PORTLAND INTERNATIONAL JETPORT  
 VERTICAL CIRCULATION IMPROVEMENTS  
 1001 WESTBROOK STREET  
 PORTLAND, MAINE 04102

DATE	SCALE
10-27-17	1/8" = 1'-0"

2.ED102



1 RESTROOM DEMOLITION PLAN - 2ND FLOOR  
 1/8" = 1'-0"



2 DEMOLITION PLAN - 2ND FLOOR  
 1/8" = 1'-0"

**NOTES:**

- SEE SHEET 2.E-001 FOR LEGEND AND GENERAL NOTES.
- IN EXISTING RESTROOMS REMOVE ALL EXISTING LIGHTS, SPEAKERS, RECEPTACLES AND FIRE ALARM AND REPLACE WITH NEW AS INDICATED ON POWER, LIGHTING AND SYSTEMS DRAWINGS. RE-USE EXISTING OUTLET BOXES, CONDUIT, BRANCH CIRCUITS AND LOW VOLTAGE WIRING TO THE EXTENT POSSIBLE LE TO FEED NEW DEVICES.

**KEYED NOTES:**

- EXISTING SMOKE DETECTOR AND PAGING SPEAKER TO BE REMOVED AND RELOCATED TO NEW LOCATION SHOWN ON 2.EY102. EXTEND EXISTING WIRING AS REQUIRED TO ACCOMMODATE NEW DEVICE LOCATIONS.
- WITHIN DESIGNATED AREA CEILING WILL BE REMOVED AND STRUCTURE LEFT EXPOSED. ALL EXISTING CONDUITS RUNNING THROUGH THIS AREA TO BE RE-ROUTED SO THAT NO WIRING IS LEFT IN AREA WITH EXPOSED STRUCTURE. FIELD VERIFY SIZE AND QUANTITIES OF CONDUITS THAT WILL NEED TO BE RE-ROUTED.
- DISCONNECT POWER FOR HAND DRYER AND RE-USE BRANCH CIRCUITS TO FEED NEW HAND DRYERS. EXTEND EXISTING WIRING AS REQUIRED TO ACCOMMODATE LOCATIONS SHOWN ON 2.EP102.
- REMOVE SECURITY CAMERAS AND RELOCATE AS DIRECTED BY OWNER. EXTEND EXISTING WIRING TO ACCOMMODATE NEW CAMERA LOCATIONS.
- REMOVE ALL CONDUIT, WIRING AND EMO BUTTONS ASSOCIATED WITH ESCALATOR.
- REMOVE EXISTING LIGHTS AND RELOCATE AT NEW LOCATION SHOWN ON 2.EL102. EXTEND EXISTING WIRING AS REQUIRED TO ACCOMMODATE NEW LIGHT LOCATIONS.

