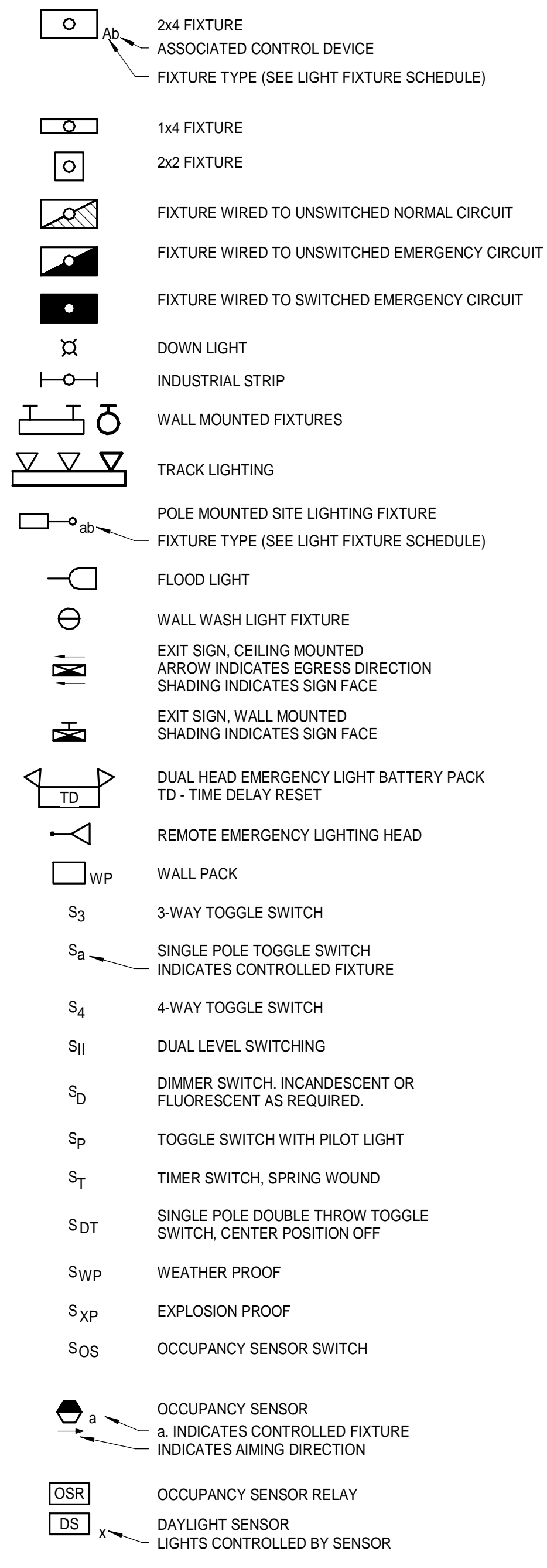
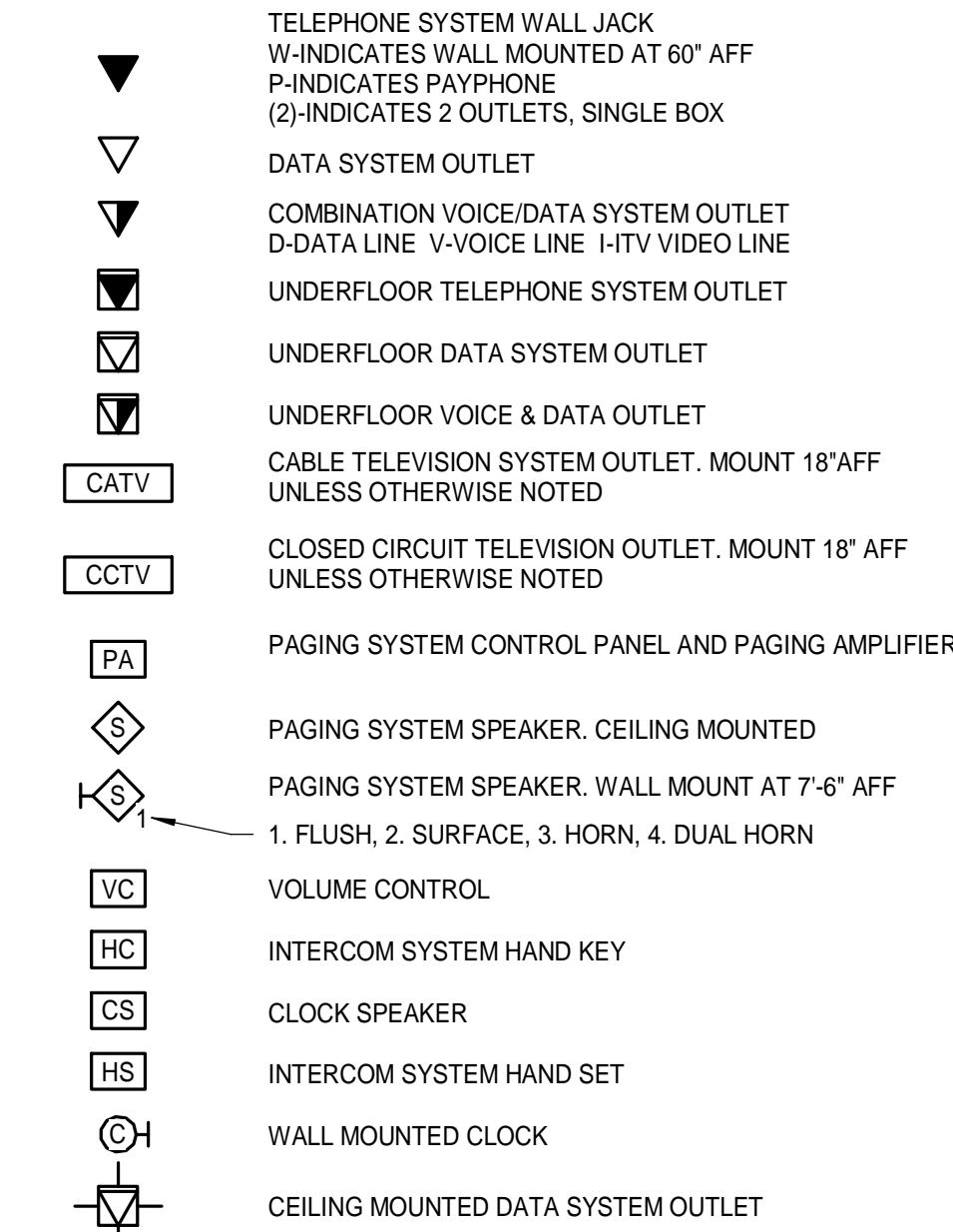


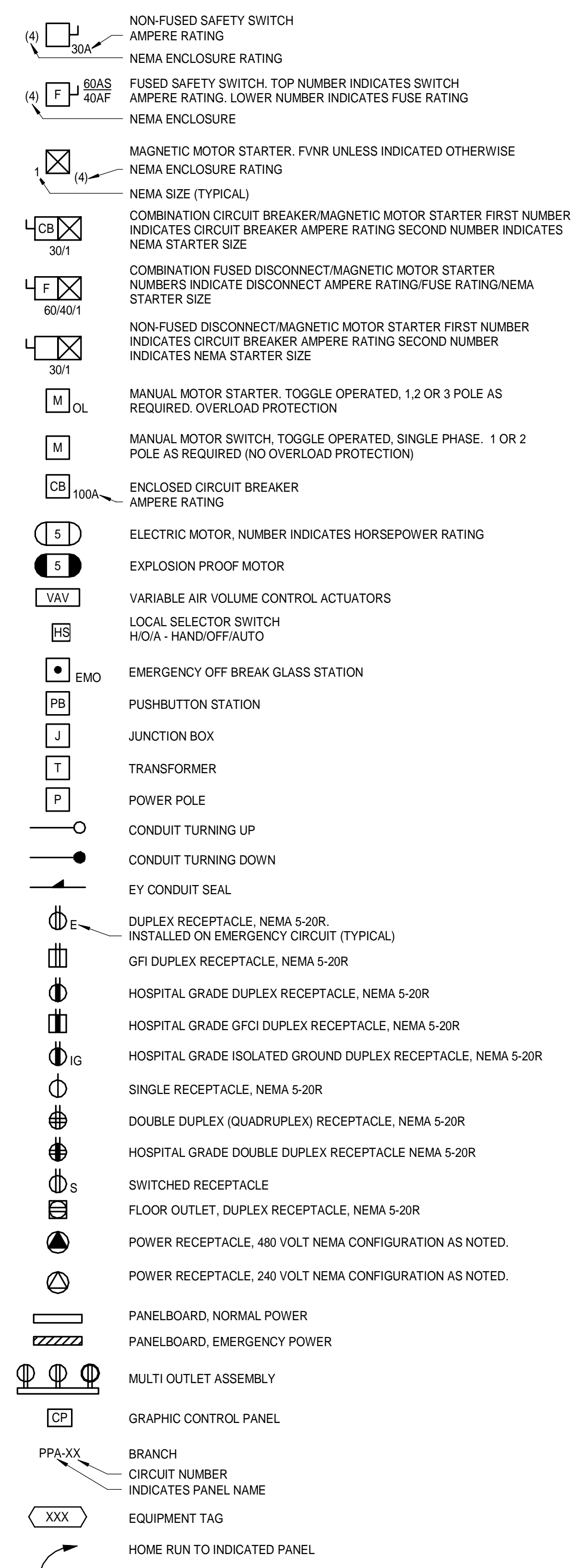
LIGHTING



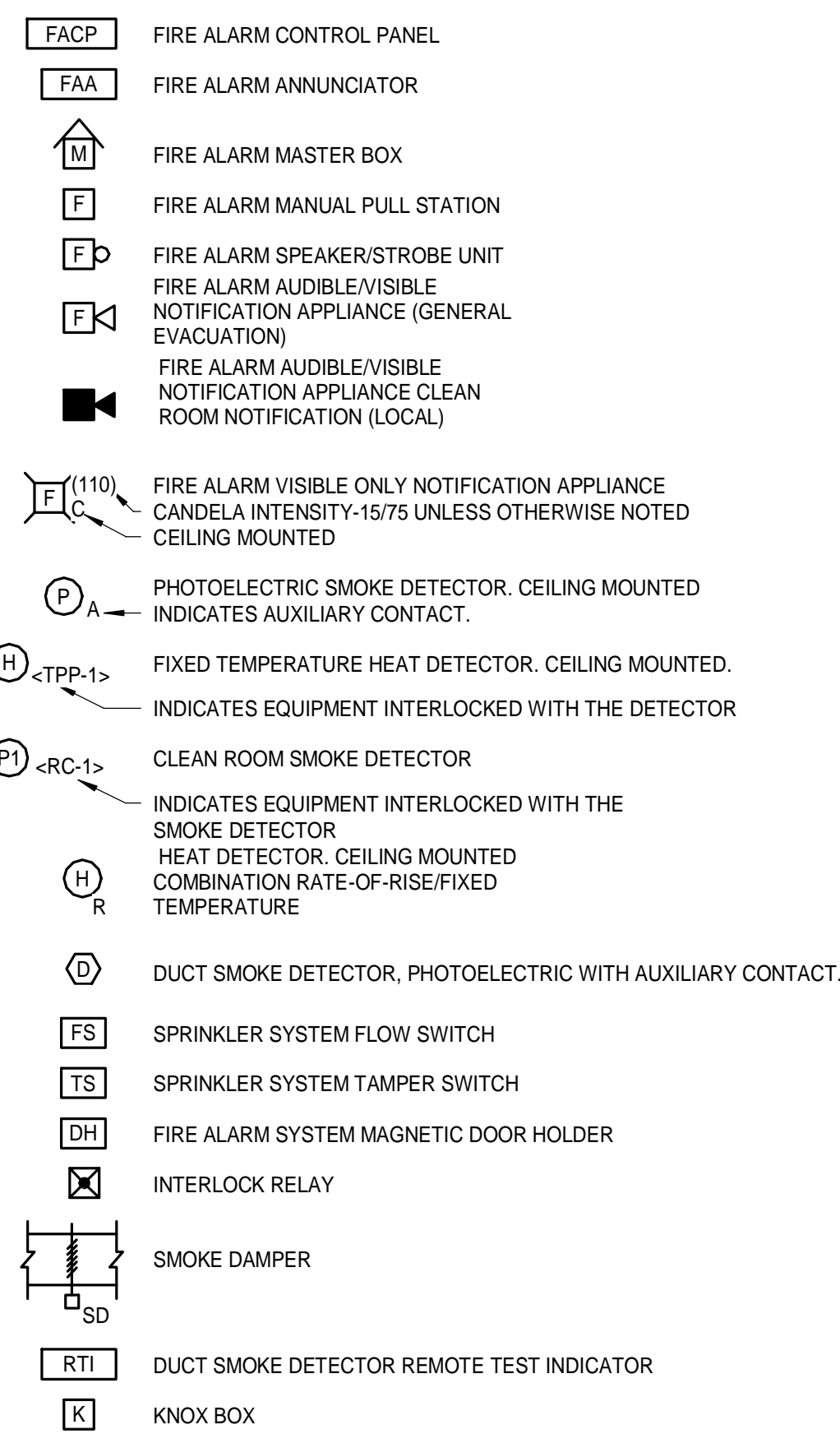
COMMUNICATION & DATA SYSTEMS



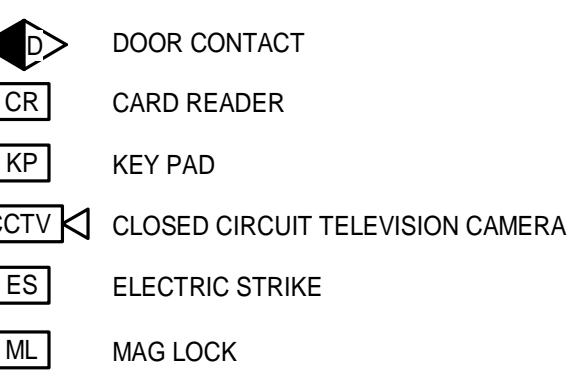
POWER



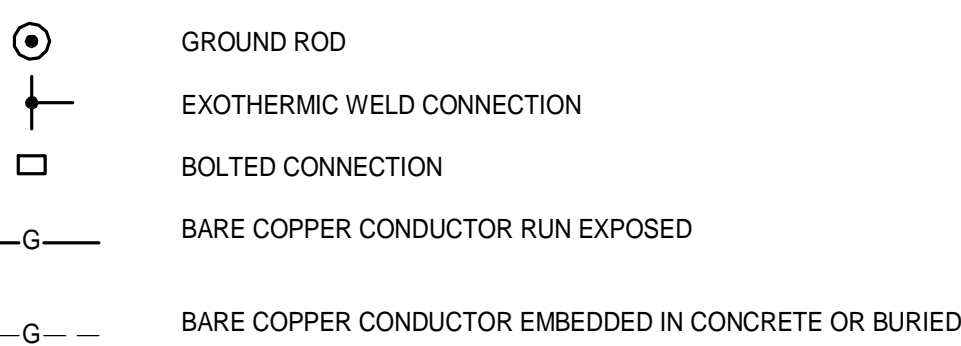
FIRE ALARM



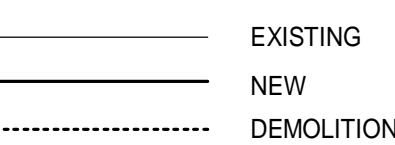
SECURITY SYSTEMS



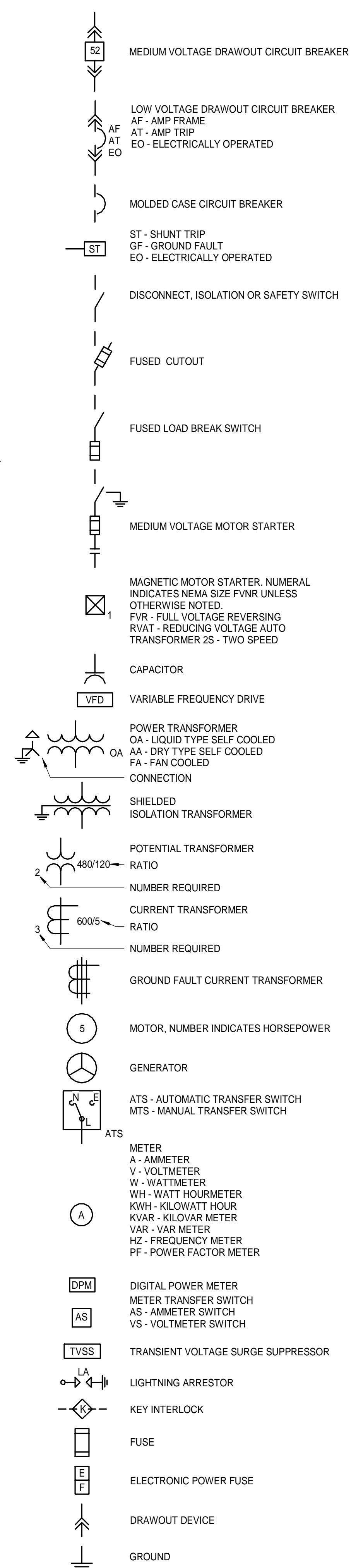
GROUNDING



LINE TYPES



ONE LINE DIAGRAM



ABBREVIATIONS

A AMP AMPERE	LA LIGHTNING ARRESTER
AFF ABOVE FINISHED FLOOR	LTG LIGHTING
AFG ABOVE FINISHED GRADE	MC METAL CLAD
AHJ AUTHORITY HAVING JURISDICTION	MCB MAIN CIRCUIT BREAKER
AIC AMPERE INTERRUPTING CAPACITY	MFR MANUFACTURER
AWG AMERICAN WIRE GAUGE	MI MINERAL INSULATED
BFG BELOW FINISHED GRADE	MLO MAIN LUG ONLY
BOS BOTTOM OF STEEL	MTD MOUNTED
C CONDUIT, CONDUCTOR	MV MEDIUM VOLTAGE
CATV CABLE TELEVISION	NC NORMALLY CLOSED
CB CIRCUIT BREAKER	NEC NATIONAL ELECTRICAL CODE
CCTV CLOSED CIRCUIT TELEVISION	NEG NEGATIVE
CPT CONTROL POWER TRANSFORMER	NEUT NEUTRAL
CT CURRENT TRANSFORMER	NIC NOT IN CONTRACT
CU COPPER	NO NORMALLY OPEN
DACT DIGITAL ALARM COMMUNICATOR TRANSMITTER	NTS NOT TO SCALE
DB DIRECT BURIED	PF POWER FACTOR
DISC DISCONNECT	PH PHASE
DN DOWN	PVC POLYVINYL CHLORIDE
EMT ELECTRICAL METALLIC TUBING	RGS RIGID STEEL CONDUIT
EWC ELECTRIC WATER COOLER	RSC RIGID STEEL CONDUIT
FAA FIRE ALARM ANNUNCIATOR	RTD RESISTANCE TEMPERATURE DETECTOR
FACP FIRE ALARM CONTROL PANEL	SN SOLID NEUTRAL
FBO FURNISHED BY OTHERS	STP SHIELDED TWISTED PAIR
FU FUSE	STT SHIELDED TWISTED TRIPLET
FWE FURNISHED WITH EQUIPMENT	SWBD SWITCHBOARD
GEN GENERATOR	SWGR SWITCHGEAR
GFCI GROUND FAULT CIRCUIT BREAKER	TOS TOP OF STEEL
GND GROUND	TRANSF TRANSFORMER
HP HORSEPOWER	TVSS TRANSIENT VOLTAGE SURGE SUPPRESSOR
HTR HEATER	V VOLT
IG ISOLATED GROUND	VA VOLT-AMPERE
IMC INTERMEDIATE METAL CONDUIT	VAR VOLT-AMPERE REACTIVE
K KILO	VM WATT METER
KCMIL THOUSAND CIRCULAR MILS	WP WEATHER PROOF
KV KILOVOLT	XFMR TRANSFORMER
KVA KILOVOLT-AMPERE	XP EXPLOSION PROOF
KVAR KILOVOLT-AMPERE REACTIVE	
KW KILOWATT	
KWH KILOWATT-HOUR	

GENERAL NOTES:

- WORK SHALL BE PERFORMED IN ACCORDANCE WITH NFPA-70, NATIONAL ELECTRICAL CODE (NEC).
- ALL MOTOR SAFETY SWITCHES, DISCONNECTS AND MOTOR STARTERS ARE PROVIDED BY DIVISION 16000 UNLESS NOTED AS FURNISHED WITH EQUIPMENT (FWE).
- UNLESS OTHERWISE NOTED CONVENIENCE RECEPTACLES SHALL BE MOUNTED 18-INCHES AFF, LIGHTING TOGGLE SWITCHES 48-INCHES AFF, DATA SYSTEM OUTLETS 18-INCHES AFF, FIRE ALARM NOTIFICATION DEVICES 80-INCHES AFF OR 6-INCHES BELOW CEILING, WHICHEVER IS LOWER, AND FIRE ALARM MANUAL PULL STATIONS 48-INCHES TO TOP OF DEVICE.
- ALL PENETRATIONS THROUGH FLOORS, RATED WALLS AND PARTITIONS SHALL BE SEALED WITH UL APPROVED FIRE SEALANT MATERIAL TO MAINTAIN THE RATING OF SEPARATION.
- ALL ENCLOSURES, CONDUIT BODIES AND THEIR COVERS CONTAINING FIRE ALARM SYSTEM CONDUCTORS SHALL BE PAINTED RED.
- AN EQUIPMENT GROUNDING CONDUCTOR SHALL BE INSTALLED WITH EVERY FEEDER AND BRANCH CIRCUIT.
- UNLESS OTHERWISE NOTED WIRING SHALL BE #212 AWG CONDUCTORS AND #12 GND. HOME RUNS FED FROM 20A-1P CIRCUITS IN EXCESS OF 100 FEET SHALL BE #10 AWG.
- FLEXIBLE CONNECTIONS TO MOTORS SHALL BE LIQUID TIGHT FLEXIBLE METAL CONDUIT, UNLESS OTHERWISE NOTED.
- LIGHTING TOGGLE SWITCHES SHALL BE COMMERCIAL SPECIFICATION GRADE 120/277 VOLT, SIDE WIRED AND PROVIDED WITH GROUNDING SCREW. PROVIDE LEVITON WIRING DEVICES. COLOR TO BE IVORY
- CONVENIENCE RECEPTACLES SHALL BE COMMERCIAL SPECIFICATION HOSPITAL GRADE TAMPER RESISTANT GROUNDING TYPE NEMA 5-20R, SIDE WIRED, LEVITON MODEL #8300-SGI. COLOR TO BE IVORY.
- PROVIDE WALL PLATES FOR ALL WIRING DEVICES, NYLON SMOOTH TYPE IN FINISHED AREAS AND GALVANIZED IN UNFINISHED AREAS. ALL WIRING DEVICES PLATES TO BE PROVIDED WITH TAMPER PROOF SCREWS.
- ALL WIRING SHALL BE 600V, COPPER WITH THHN/THWN INSULATION.

GENERAL NOTE

ALL GENERAL NOTES, SYMBOL LISTS, AND DETAILS ARE TO BE CONSIDERED AS APPLICABLE TO ALL ELECTRICAL DRAWINGS FOR THIS PROJECT. SYMBOLS AND ABBREVIATIONS SHOWN ON THIS SHEET ARE FOR REFERENCE ONLY AND DO NOT INDICATE THEIR INCORPORATION IN THE DESIGN.

NOT FOR CONSTRUCTION

ARCHITECTURE 144 Fore Street P.O. Box 618
Portland, Maine 04104
tel. (207) 772-3846
fax. (207) 772-1070
www.srmetric.com

ENGINEERING

INTERIORS

ENERGY

SMRT ENERGY

PROJECT NO. 17033

PROJECT MGR. JCDRAWIN

AE OF RECORD

DATE 12/21/17

ISSUED FOR PERMIT

BY

DATE

STATUS

DRW

DRN

CDS

DJT

SEBAGO TECHNICS

WWW.SEBAGOTECHNICS.COM

75 John Roberts Rd., Suite 1A
Saco, Maine 04072
Tel. 207.282.2100

250 Goodland Rd., Suite B
Saco, Maine 04072
Tel. 207.783.6565

PROJECT NO. FIELD BOOK DESIGN CHKD DRAWN

LEGEND AND GENERAL NOTES

OF:

PORTLAND INTERNATIONAL JETPORT
VERTICAL CIRCULATION IMPROVEMENTS

1001 WESTBROOK STREET
PORTLAND, MAINE 04102

DATE	SCALE
10-27-17	NONE

2.E-001