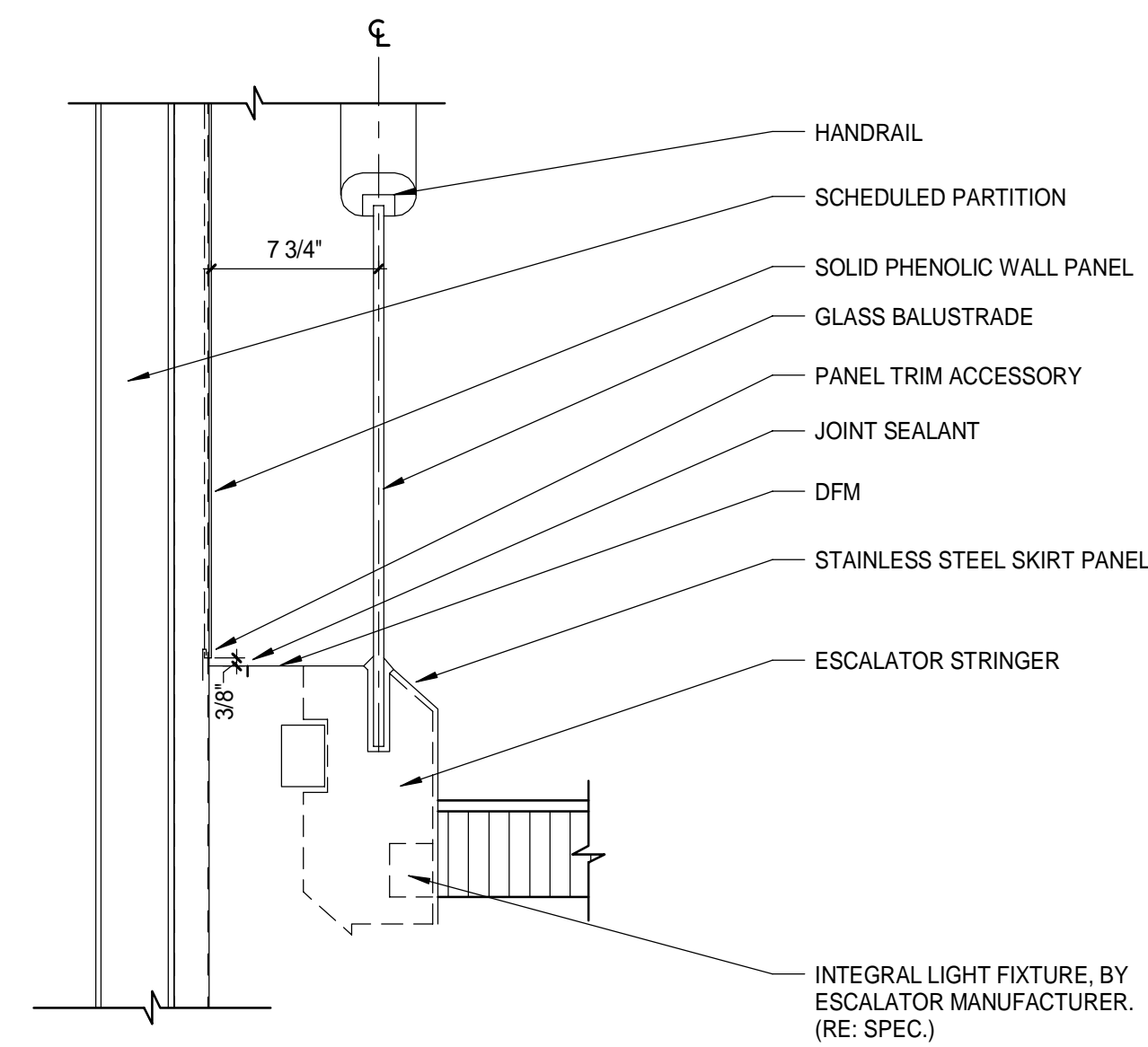
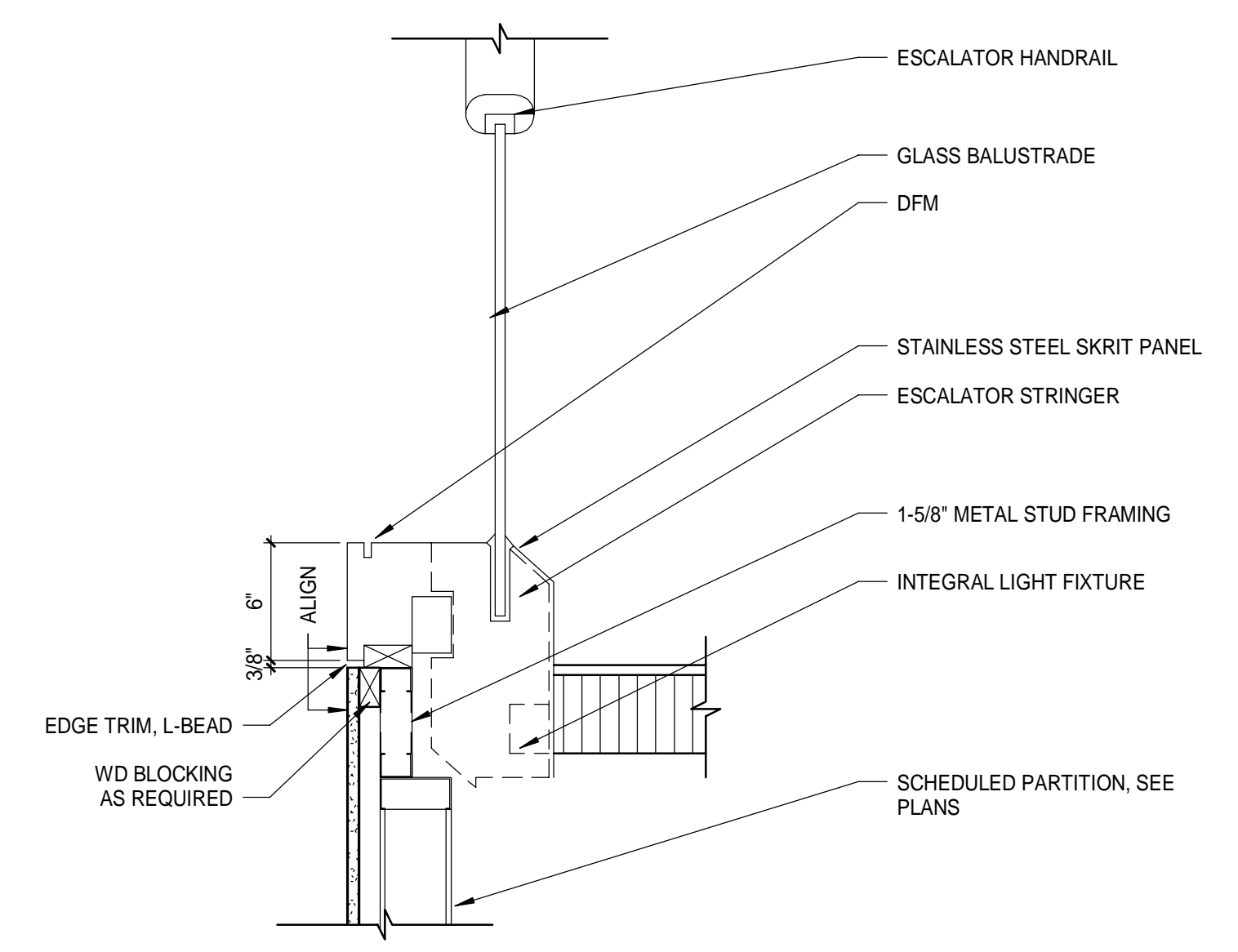


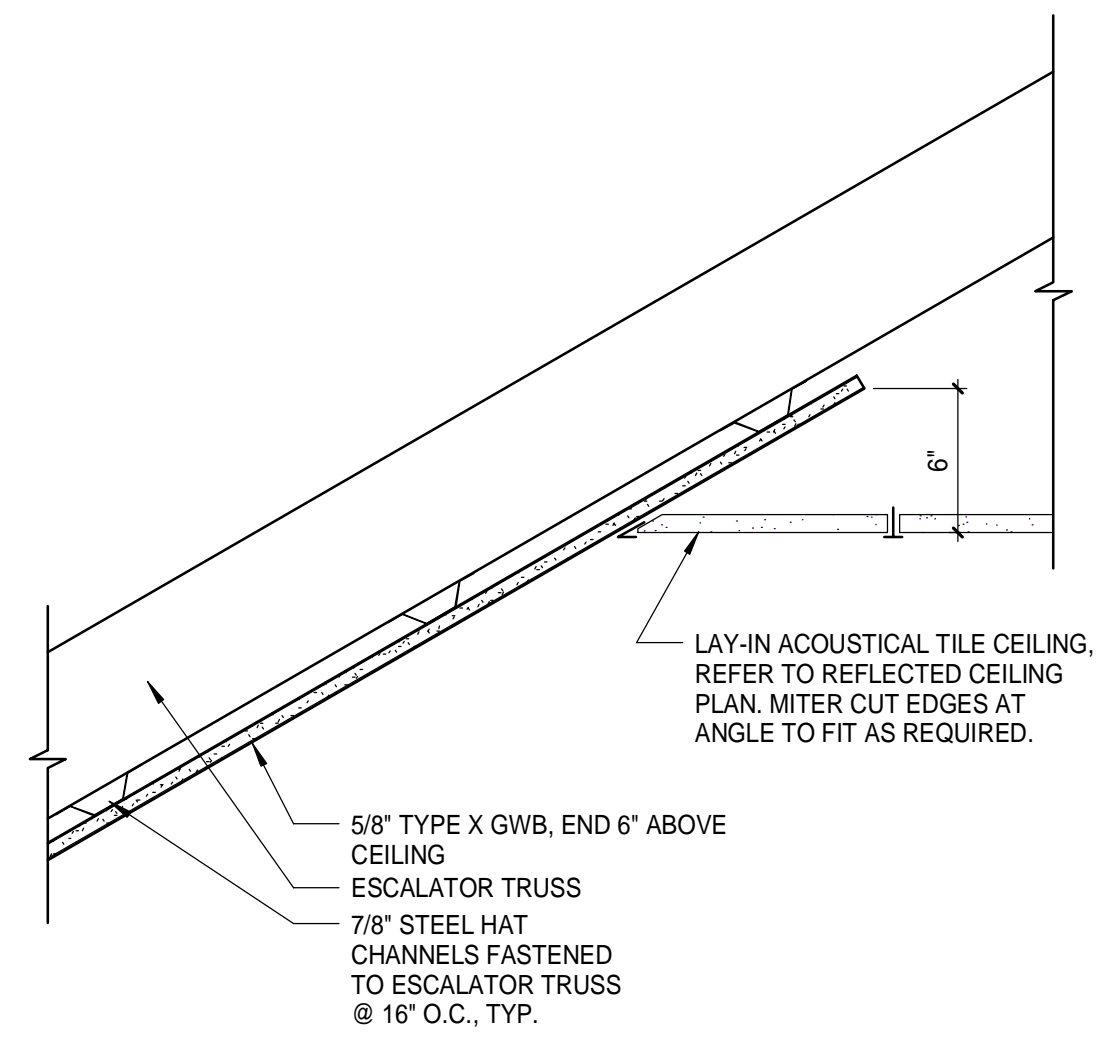
3 SECTION DETAIL - ESCALATOR RAILING AT LANDING
1 1/2" = 1'-0"



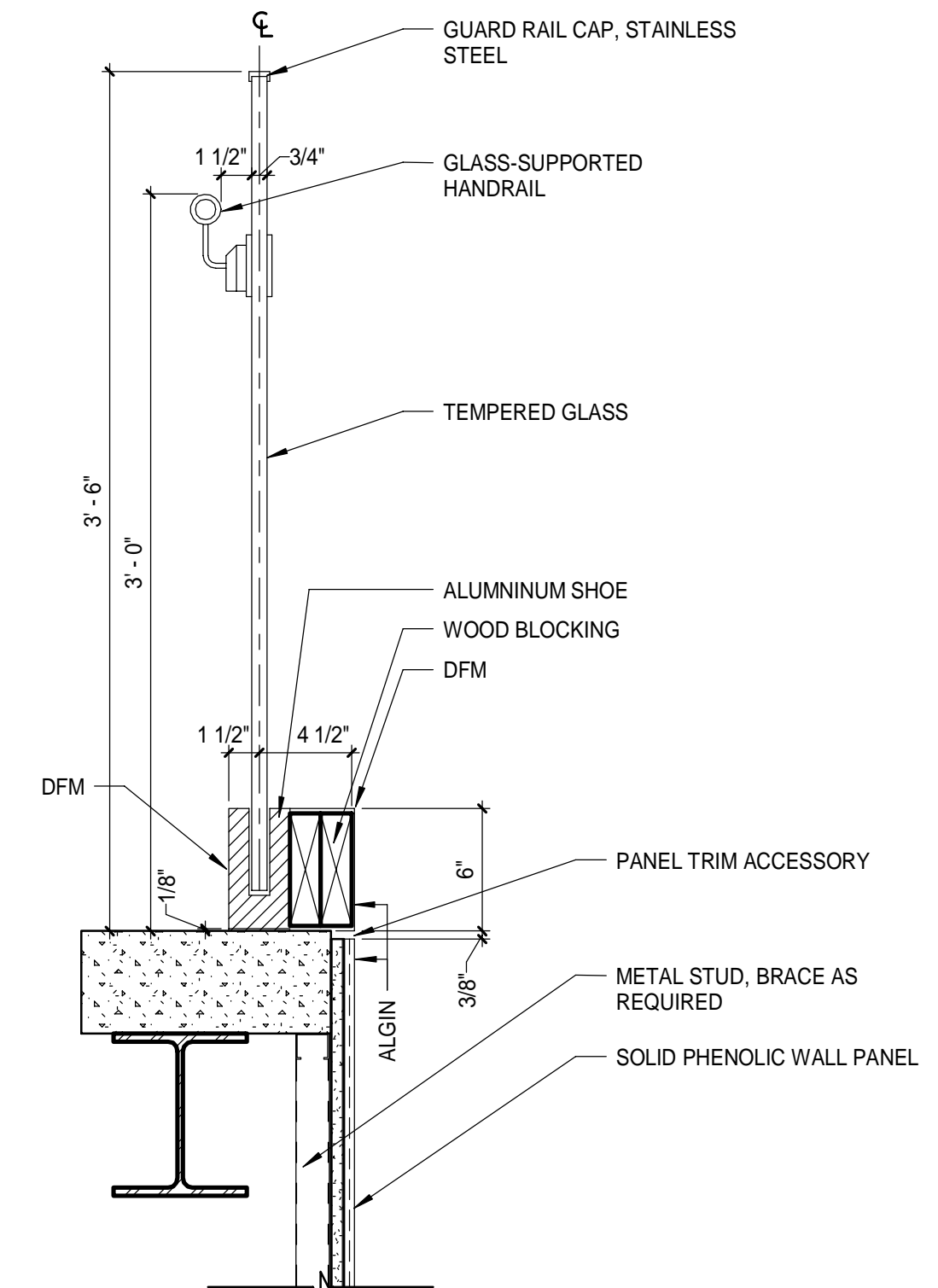
2 SECTION DETAIL - ESCALATOR RAILING AT WALL
1 1/2" = 1'-0"



1 SECTION DETAIL AT ESCALATOR RAILING
1 1/2" = 1'-0"



5 SECTION DETAIL AT ESCALATOR BASE
1 1/2" = 1'-0"



4 SECTION DETAIL AT GLASS RAIL
1 1/2" = 1'-0"

NOT FOR CONSTRUCTION

ARCHITECTURE 144 Fore Street, P.O. Box 618
Portland, Maine 04104
tel. (207) 775-3846
fax. (207) 775-1070
www.smrtinc.com

ENGINEERING
PLANNING
INTERIORS
ENERGY

SMRT PROJECT NO. 17033

PROJECT MGR. JCDRAWN
Author
DL
DPL
AE OF RECORD
Checker

REV.	BY:	DATE:	ISSUED FOR PERMIT
		12/21/17	STATUS:

THIS PLAN SHALL NOT BE MODIFIED WITHOUT WRITTEN PERMISSION FROM SEBAGO TECHNICS, INC. ALL CHANGES SHALL BE AT THE USER'S RISK AND WITHOUT LIABILITY TO SEBAGO TECHNICS, INC.

SEBAGO
TECHNICS

WWW.SEBAGOTECHNICS.COM
75 John Roberts Rd., Suite 1A
South Portland, ME 04086
Tel: (207) 775-3846
Fax: (207) 775-1070

PROJECT NO.	FIELD BOOK	DESIGN	CHKD	DRAWN
-------------	------------	--------	------	-------

ESCALATOR DETAILS
OF:
PORTLAND INTERNATIONAL JETPORT
VERTICAL CIRCULATION IMPROVEMENTS
1001 WESTBROOK STREET
PORTLAND, MAINE 04102

DATE	SCALE
12/21/17	1 1/2" = 1'-0"

2.AE535