

NOT FOR CONSTRUCTION

ARCHITECTURE 144 Fore Street P.O. Box 618
 Portland, Maine 04104
 TEL: (207) 775-3846
 FAX: (207) 775-1070
 WWW.SMINTIC.COM

ENGINEERING
 INTERIORS
 ENERGY

SMINTIC

SMINTIC PROJECT NO.: PROJECT MGR. L.C. DRAWN: A.E. OF RECORD
 DRL MOH DRL

17033

ISSUED FOR PERMIT
 DATE: 12/21/17
 BY: [Signature]

STATUS: [Signature]

THIS PLAN SHALL NOT BE MODIFIED WITHOUT WRITTEN PERMISSION FROM SEBAGO TECHNICS, INC.
 THE USER SHALL BE RESPONSIBLE FOR OBTAINING ALL NECESSARY PERMITS AND SHALL BE AT THE USER'S SOLE RISK AND WITHOUT LIABILITY TO SEBAGO TECHNICS, INC.

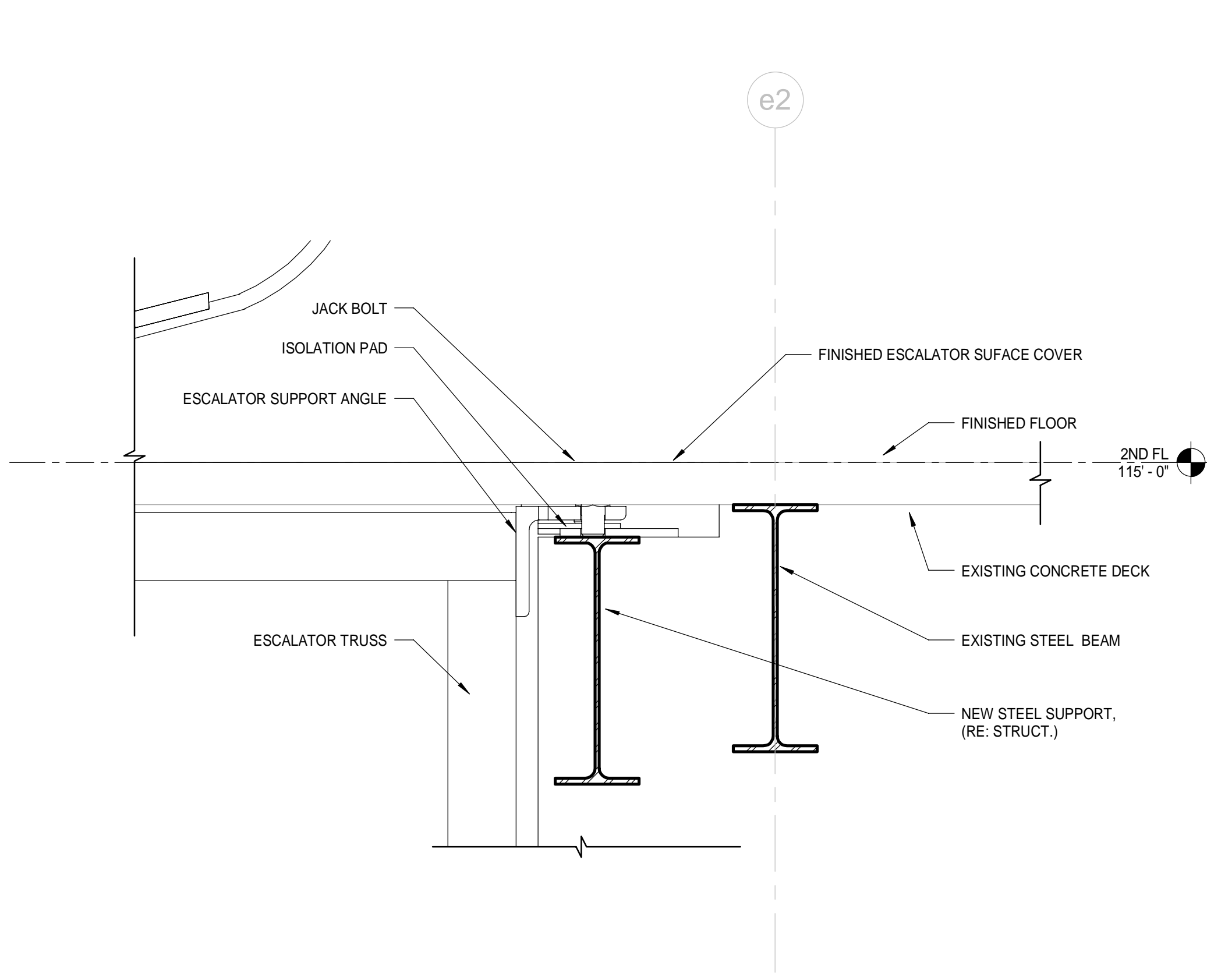
SEBAGO TECHNICS
 WWW.SEBAGOTECHNICS.COM
 75 John Roberts Rd., Suite 1A
 South Portland, ME 04086
 TEL: (207) 775-3846
 FAX: (207) 775-1070

PROJECT NO. 1 FIELD BOOK DESIGN CHKD DRAWN

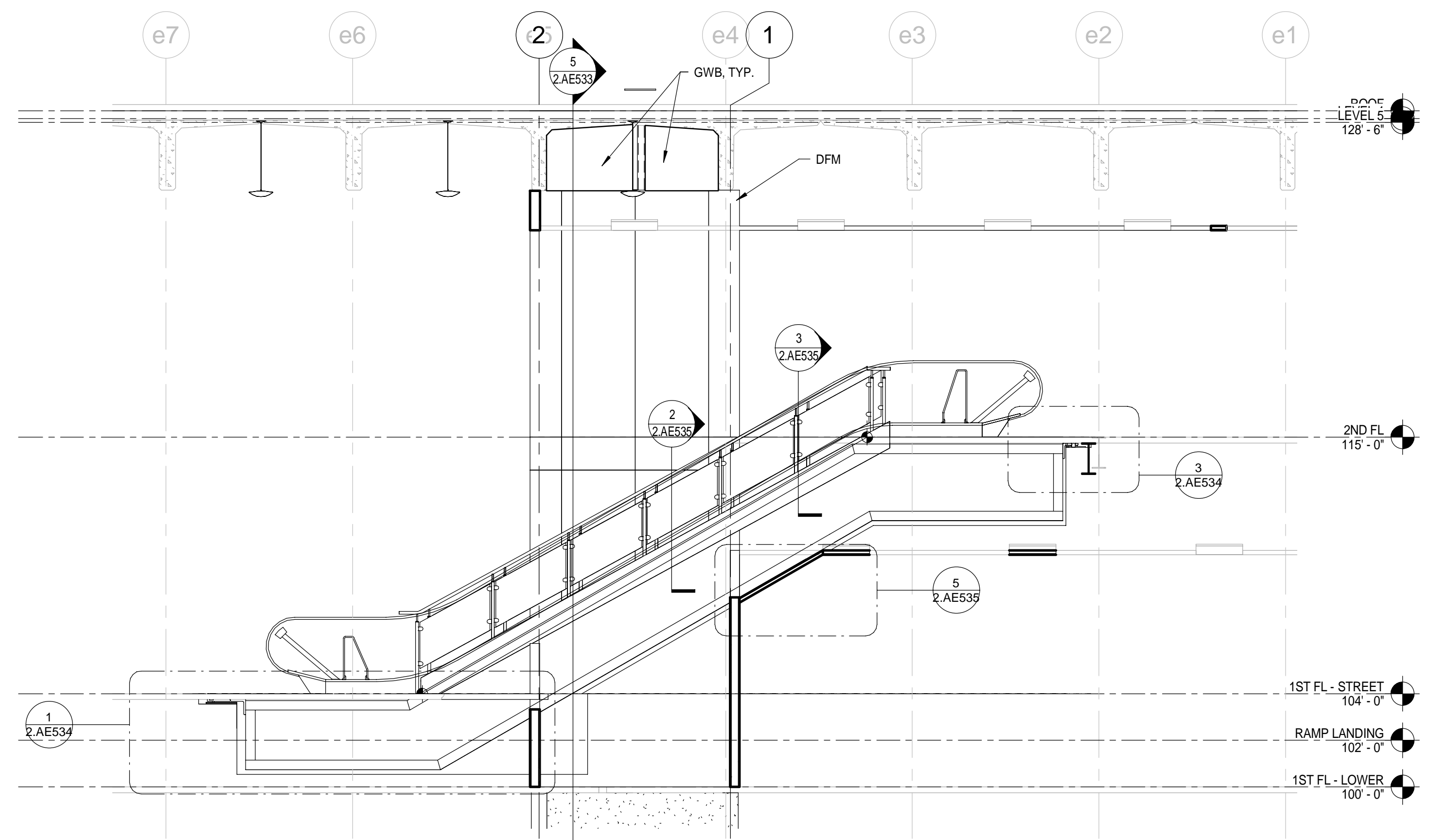
ESCALATOR DETAILS
 OF:
 PORTLAND INTERNATIONAL JETPORT
 VERTICAL CIRCULATION IMPROVEMENTS
 1001 WESTBROOK STREET
 PORTLAND, MAINE 04102

DATE: 12/21/17 SCALE: As indicated

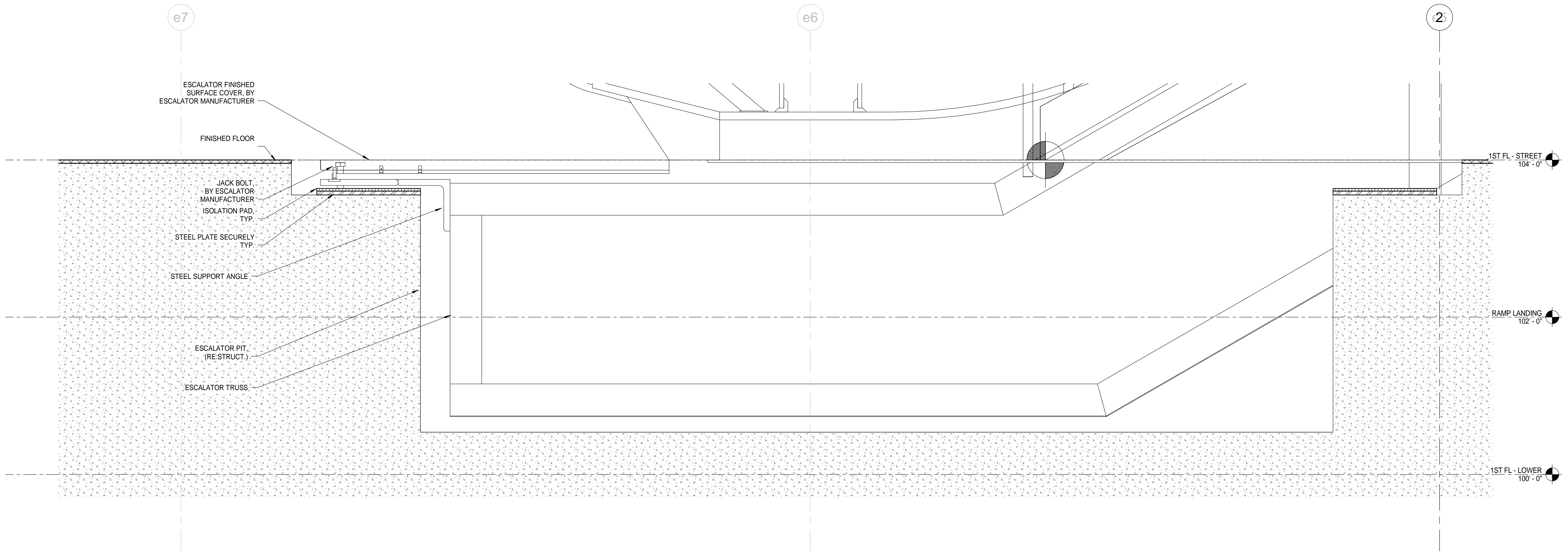
2.AE534



3 SECTION DETAIL - ESCALATOR AT LEVEL 3 FLOOR
 1 1/2" = 1'-0"



2 ESCALATOR SECTION
 1/4" = 1'-0"



1 SECTION DETAIL - ESCALATOR AT LEVEL 2 FLOOR
 1 1/2" = 1'-0"