

NOT FOR CONSTRUCTION

ARCHITECTURE 144 Fore Street P.O. Box 618
 Portland, Maine 04104
 ENGINEERING tel: (207) 775-3846
 PLANNING fax: (207) 775-1070
 INTERIORS www.smrtinc.com
 ENERGY
SMRT
 PROJECT NO. PROJECT MGR. JCDRAWN JAE OF RECORD
 DRL MOH DRL
 17033

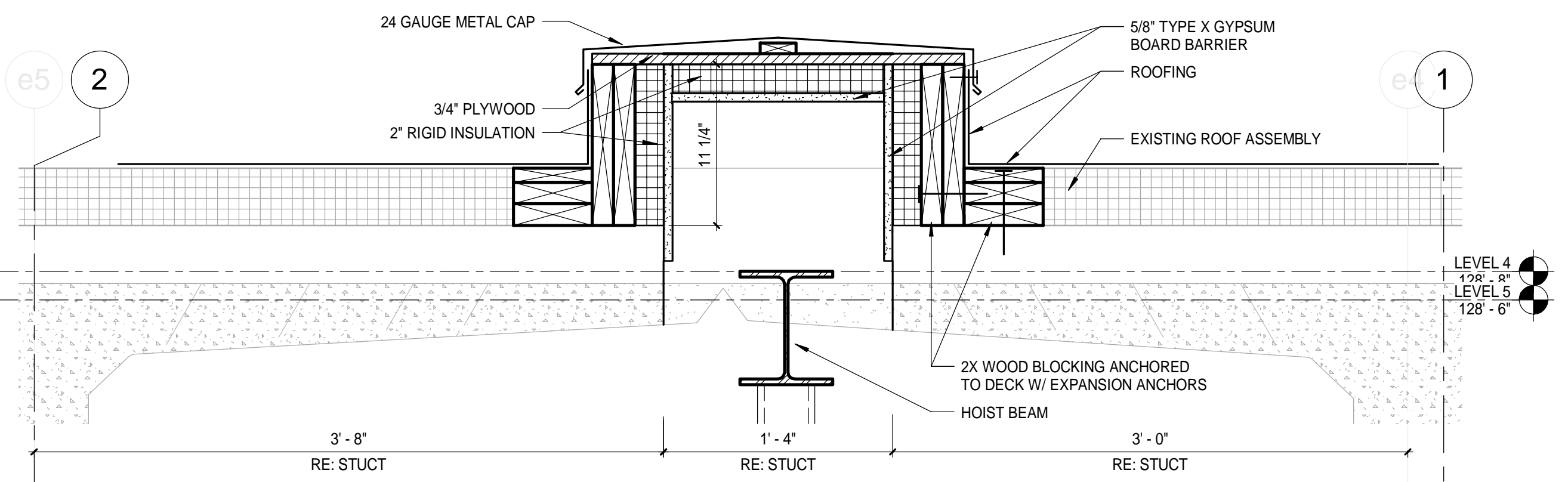
ISSUED FOR PERMIT
 DATE: 12/21/17
 STATUS:
 THIS PLAN SHALL NOT BE MODIFIED WITHOUT WRITTEN PERMISSION FROM SEBAGO
 PROJECT NO. 17033. ANY CHANGES TO THIS PLAN SHALL BE AT THE
 USER'S SOLE RISK AND WITHOUT LIABILITY TO SEBAGO TECHNICS, INC.

SEBAGO
 TECHNICS
 WWW.SEBAGOTECHNICS.COM
 75 John Roberts Rd., Suite 1A 250 Goddard Rd., Suite B
 Scarborough, ME 04074 Portland, ME 04106
 Tel: (207) 775-3846 Fax: (207) 775-1070
 PROJECT NO. 17033 FIELD BOOK DESIGN CHKD DRAWN

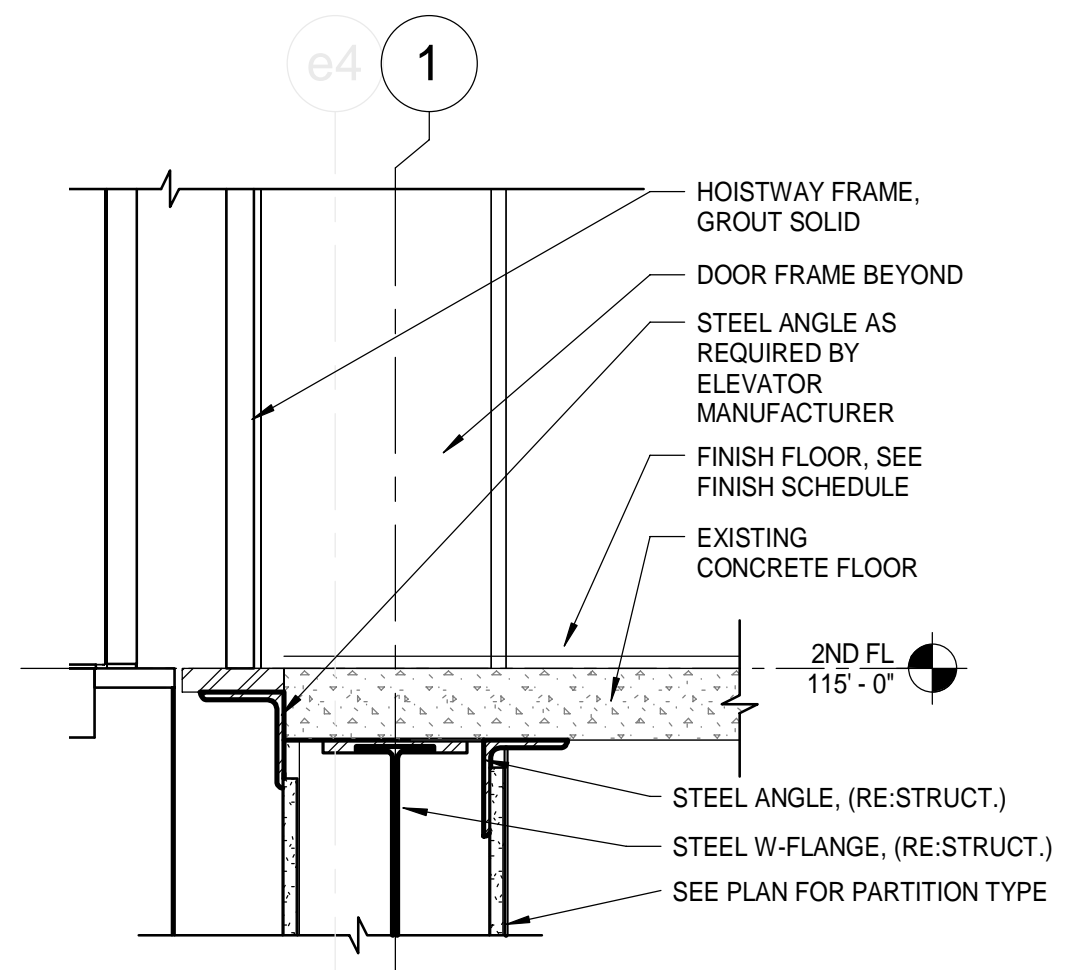
ELEVATOR DETAILS
 OF:
PORTLAND INTERNATIONAL JETPORT
VERTICAL CIRCULATION IMPROVEMENTS
 1001 WESTBROOK STREET
 PORTLAND, MAINE 04102

DATE: 12/21/17 SCALE: As indicated

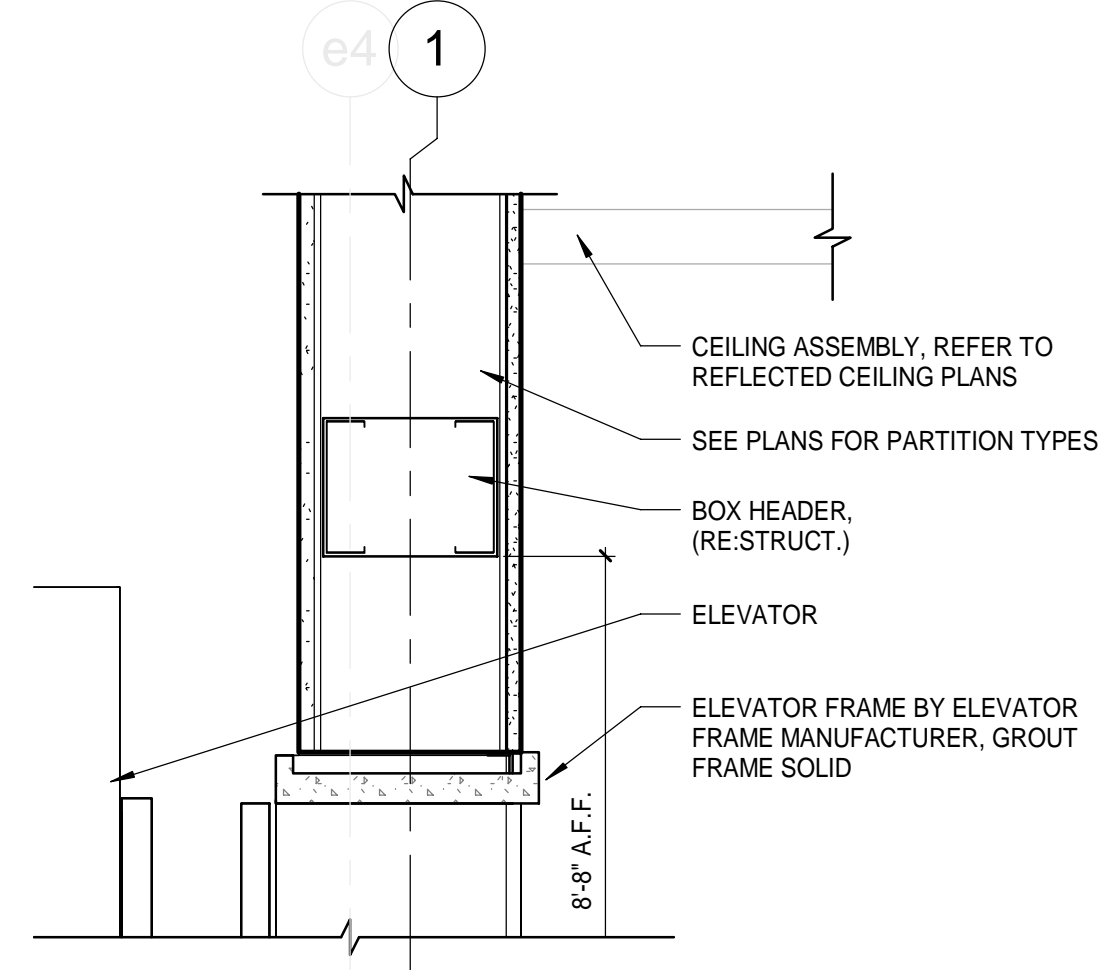
2.AE533



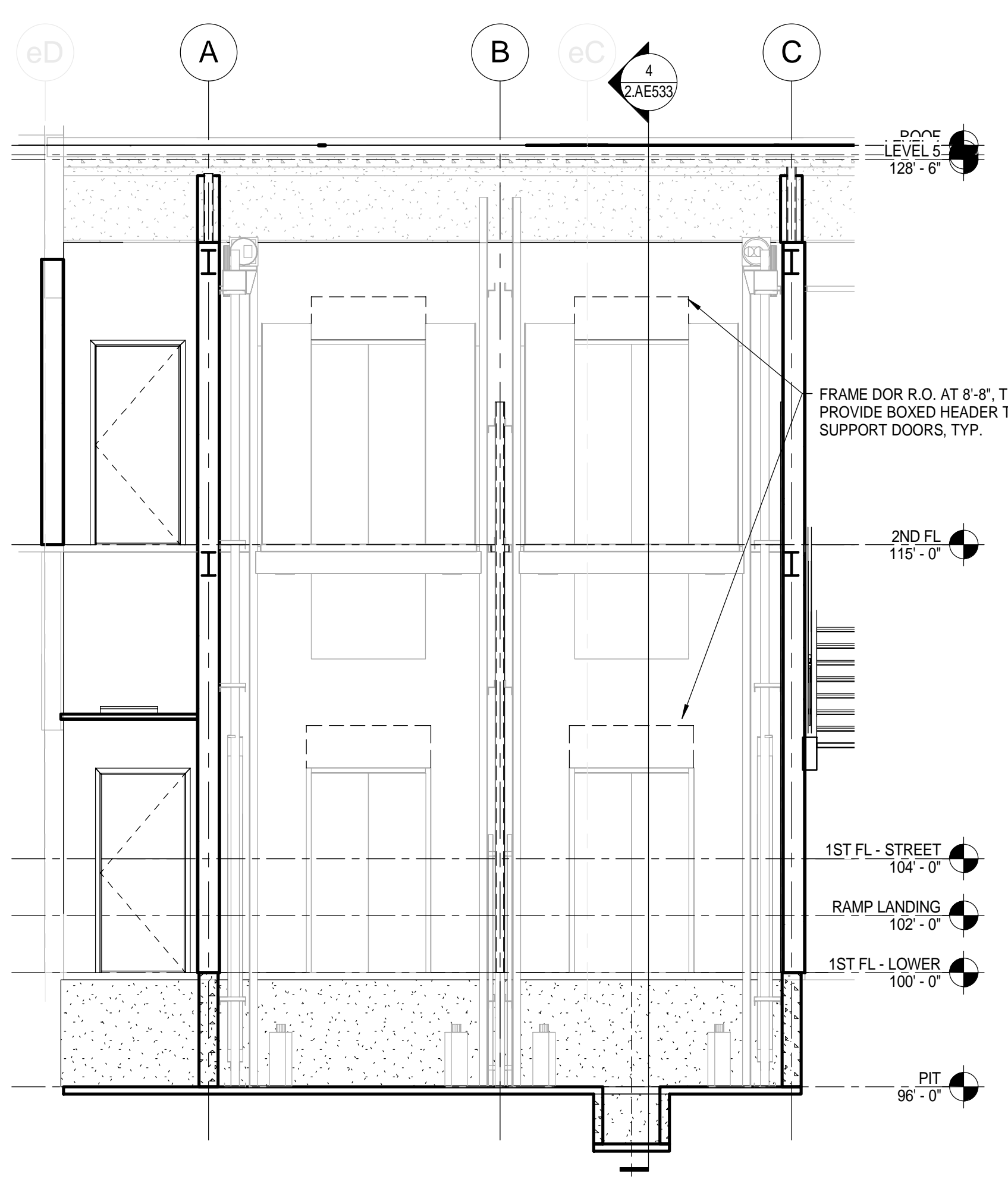
8 DETAIL - ROOF SECTION
 1 1/2" = 1'-0"



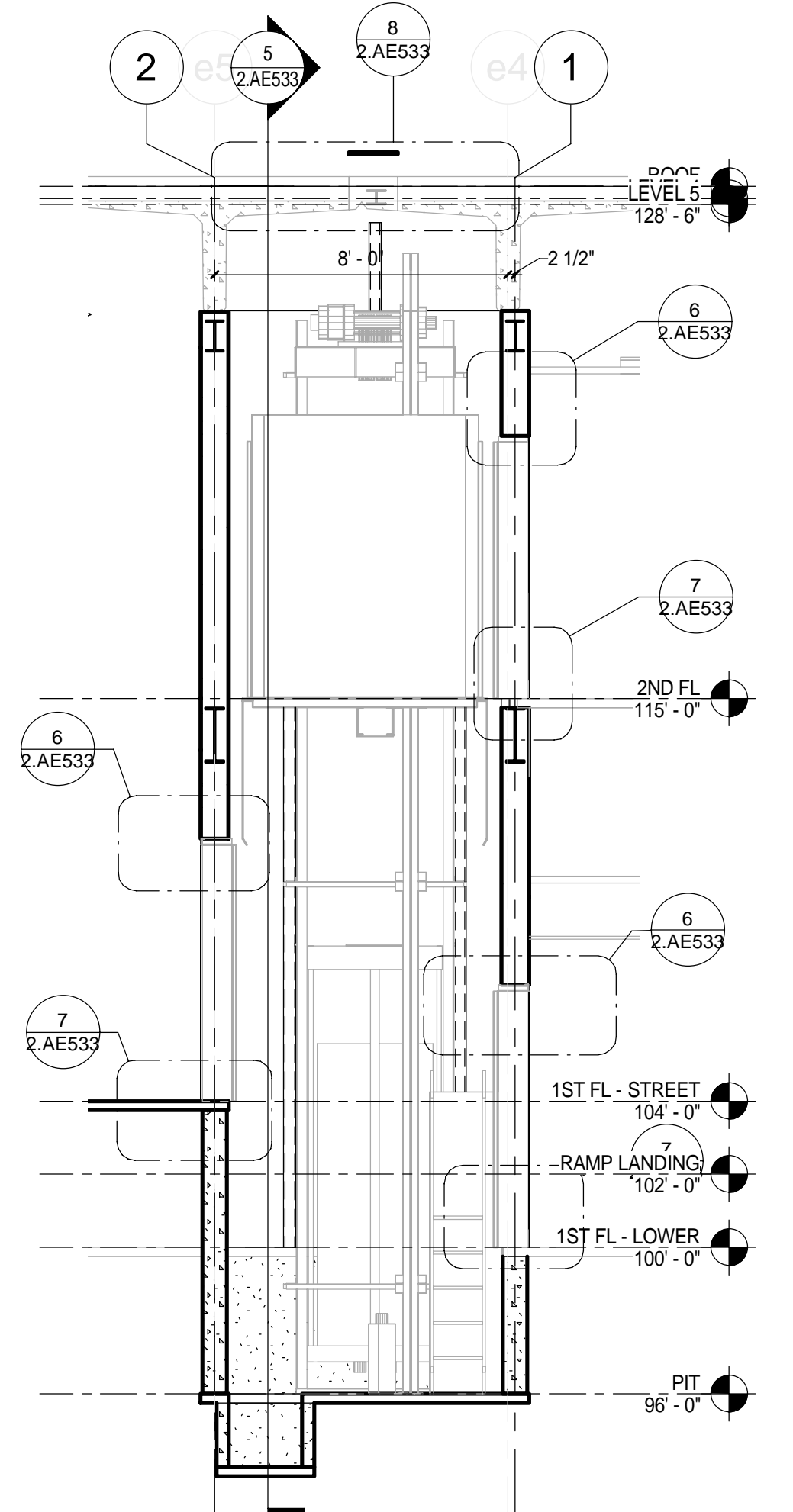
7 DETAIL - ELEVATOR DOOR SILL
 1 1/2" = 1'-0"



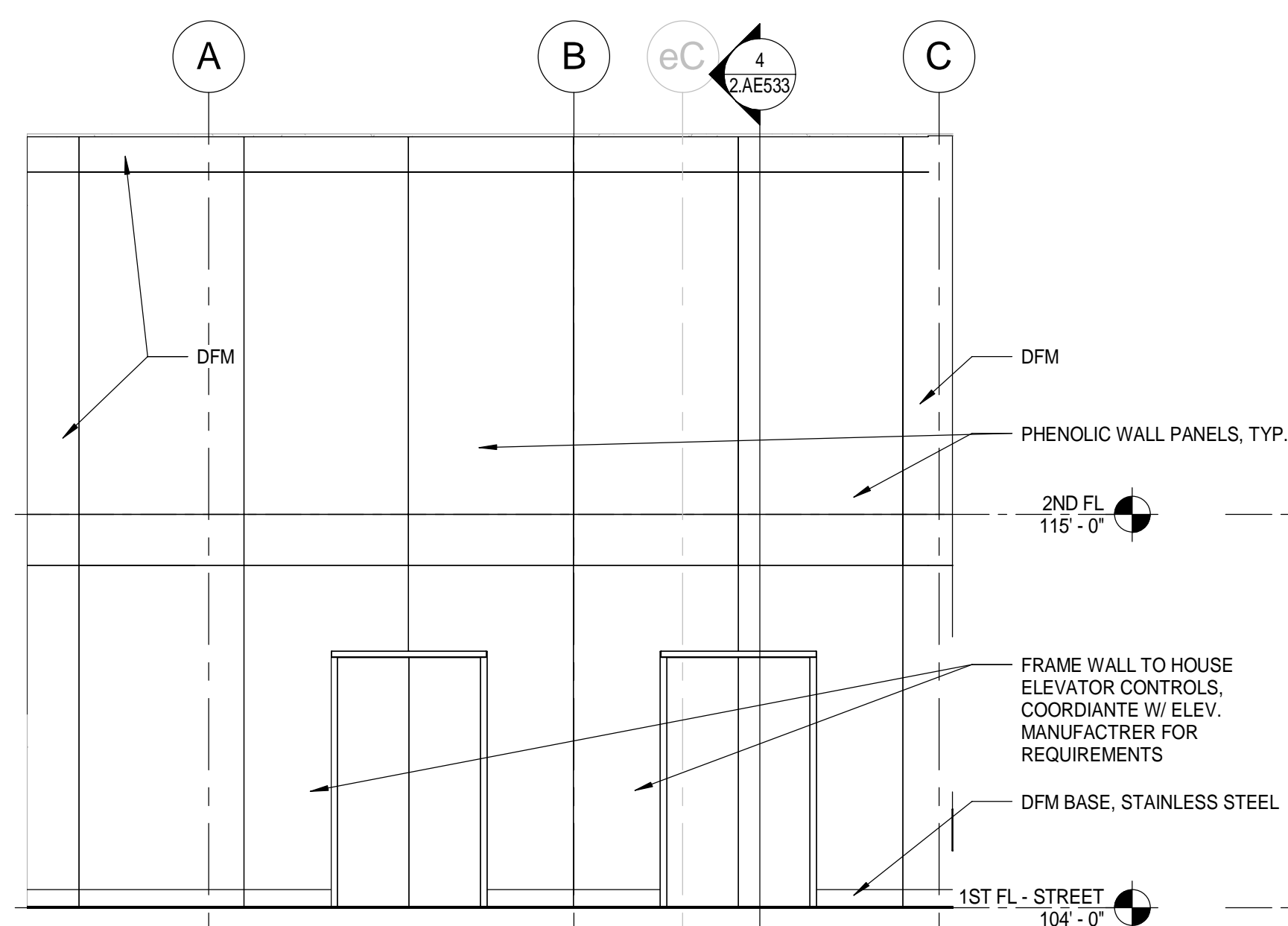
6 DETAIL - ELEVATOR DOOR HEAD
 1 1/2" = 1'-0"



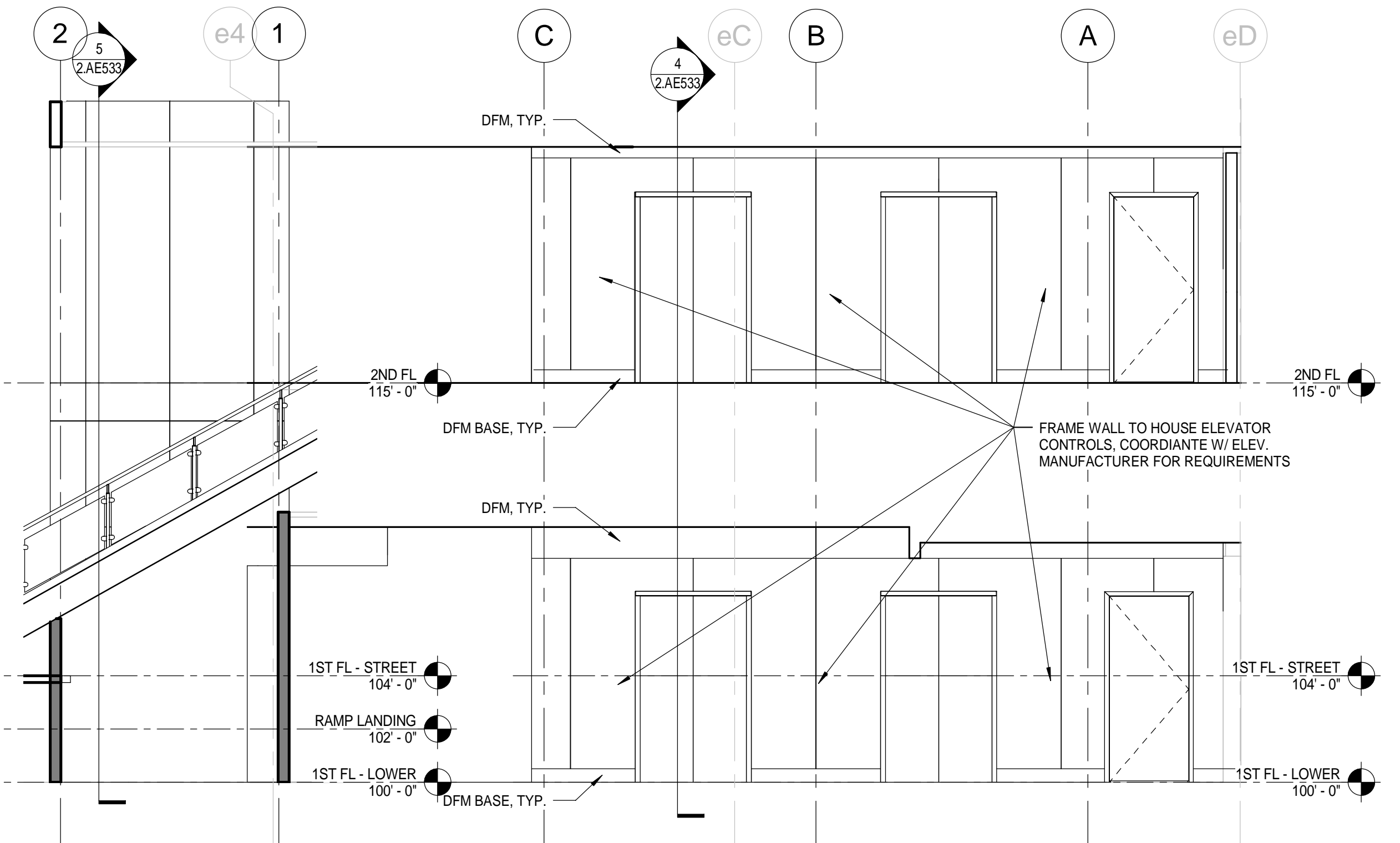
5 ELEVATION SECTION
 1/4" = 1'-0"



4 ELEVATION SECTION
 1/4" = 1'-0"



3 INTERIOR ELEVATION - ELEVATOR EAST
 1/4" = 1'-0"



2 1-a
 1/4" = 1'-0"

1 INTERIOR ELEVATION - ELEVATOR WEST
 1/4" = 1'-0"