

NOT FOR CONSTRUCTION

ARCHITECTURE 144 Fore Street P.O. Box 618
 Portland, Maine 04104
 TEL (207) 775-3846
 FAX (207) 775-1070
 WWW.SMRTINC.COM

ENGINEERING
 INTERIORS
 ENERGY

SMRT PROJECT NO. 17033
 PROJECT MGR. JCDRAWN
 A/E OF RECORD
 MOH
 DRL

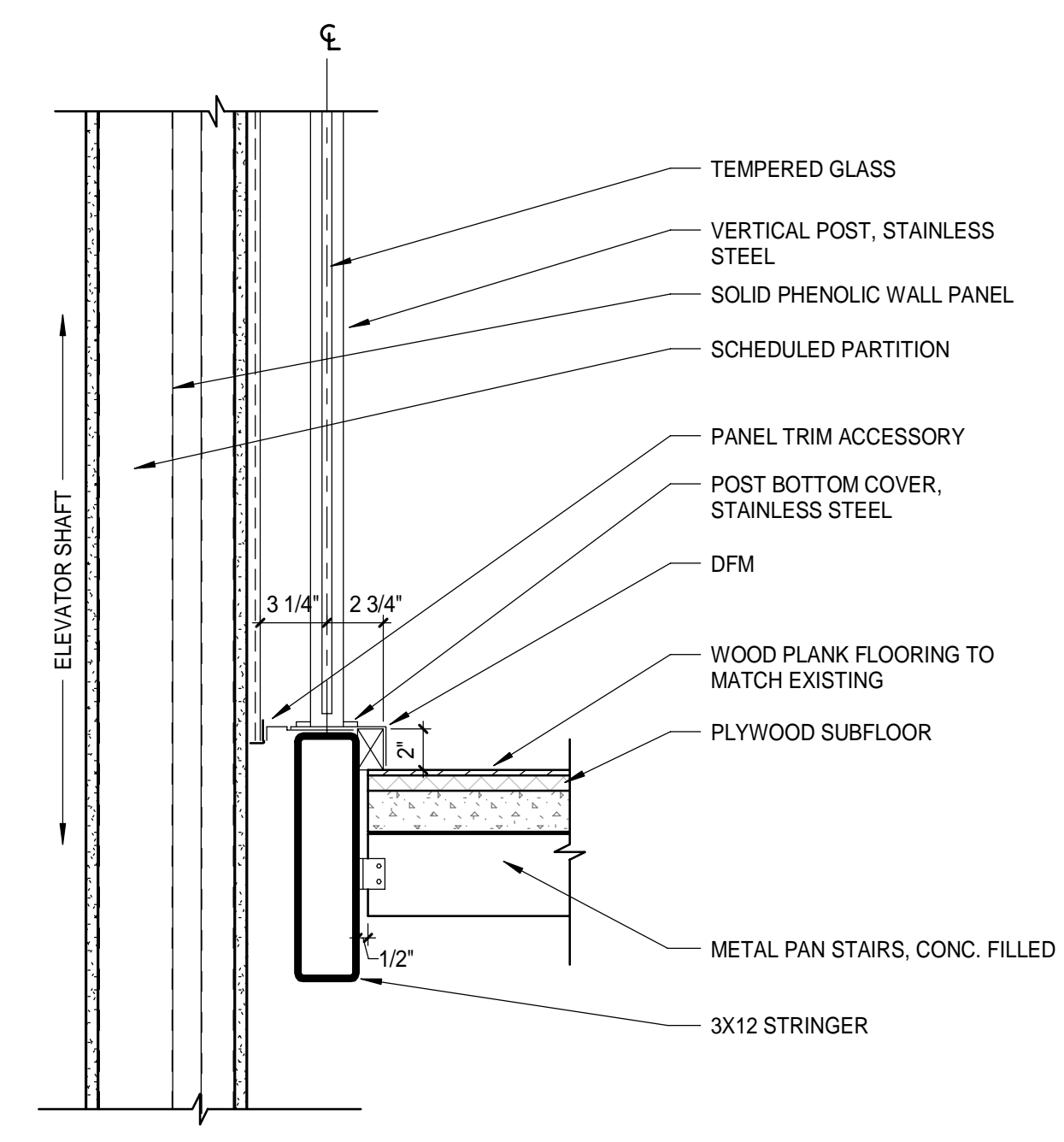
ISSUED FOR PERMIT
 DATE: 12/21/17
 REV. BY: 12/21/17
 STATUS: ISSUED FOR PERMIT
 THIS PLAN SHALL NOT BE MODIFIED WITHOUT WRITTEN PERMISSION FROM SEBAGO TECHNICS, INC.
 USER'S LIABILITY AND WITHOUT LIABILITY TO SEBAGO TECHNICS, INC.

SEBAGO TECHNICS
 WWW.SEBAGOTECHNICS.COM
 75 John Roberts Rd. - Suite 1A
 South Portland, ME 04106
 TEL (207) 775-3846
 FAX (207) 775-1070

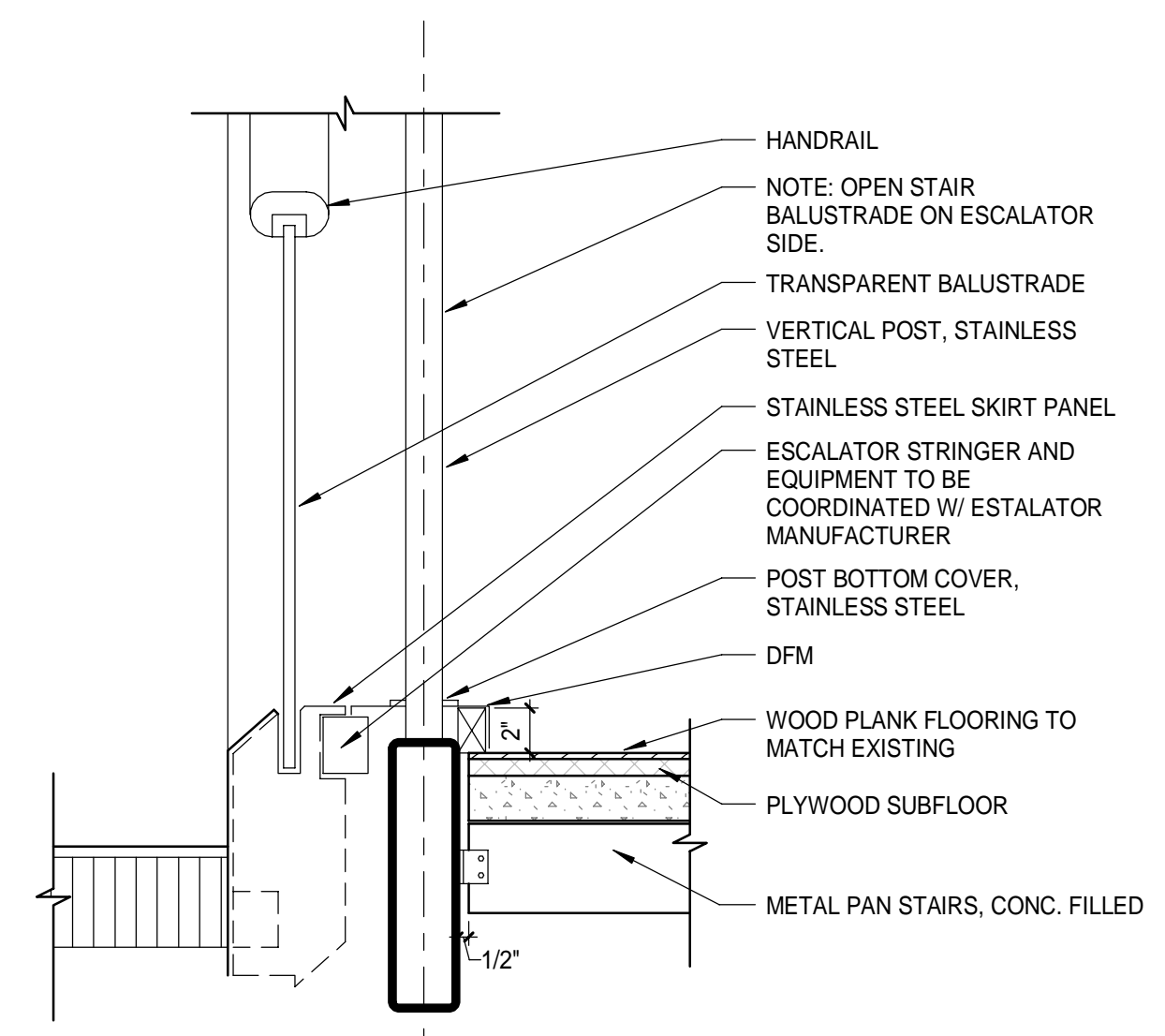
PROJECT NO. 17033
 FIELD BOOK
 DESIGN
 CHKD
 DRAWN

STAIR DETAILS
 OF:
 PORTLAND INTERNATIONAL JETPORT
 VERTICAL CIRCULATION IMPROVEMENTS
 1001 WESTBROOK STREET
 PORTLAND, MAINE 04102

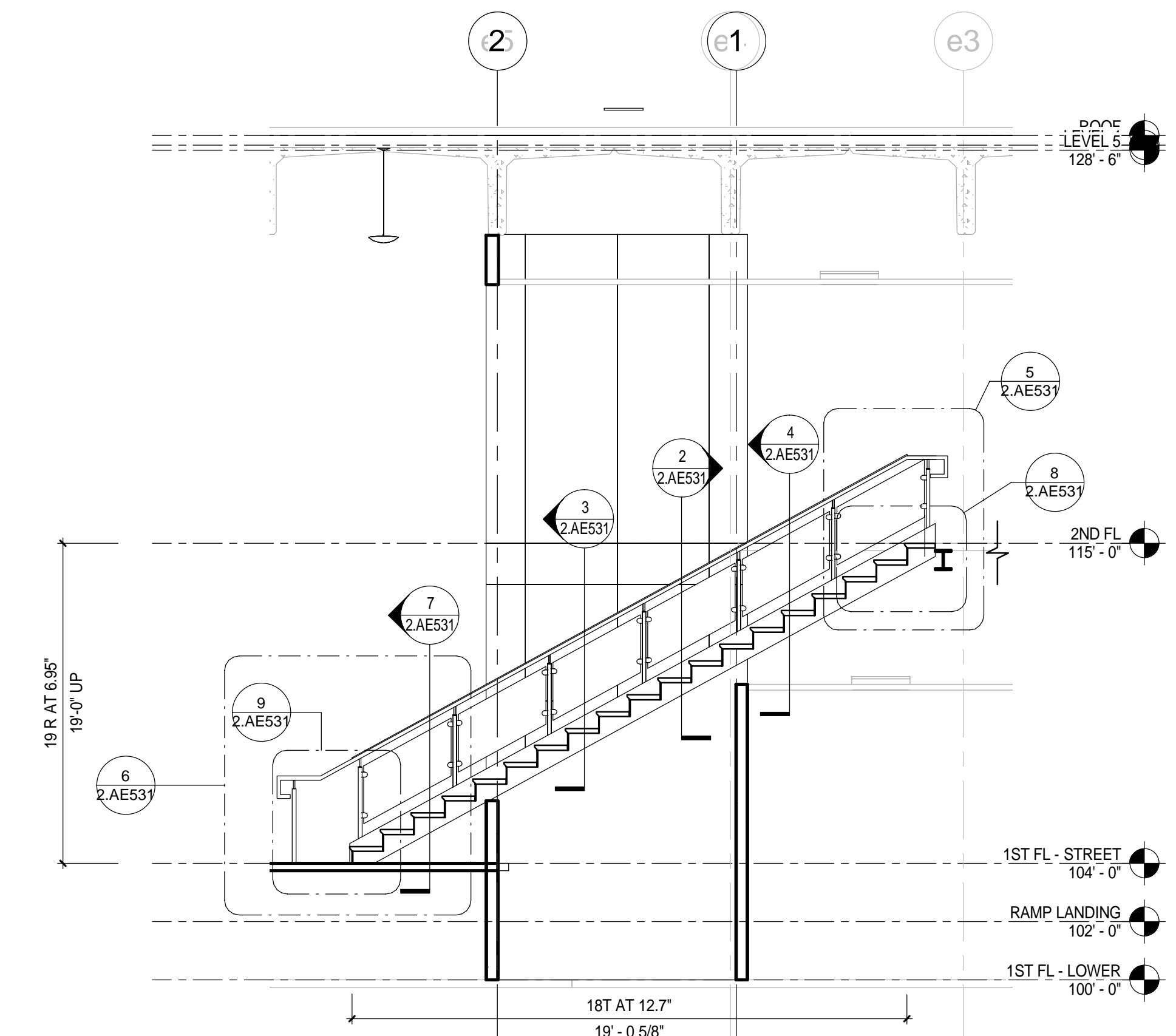
DATE: 12/21/17
 SCALE: As indicated
 2.AE531



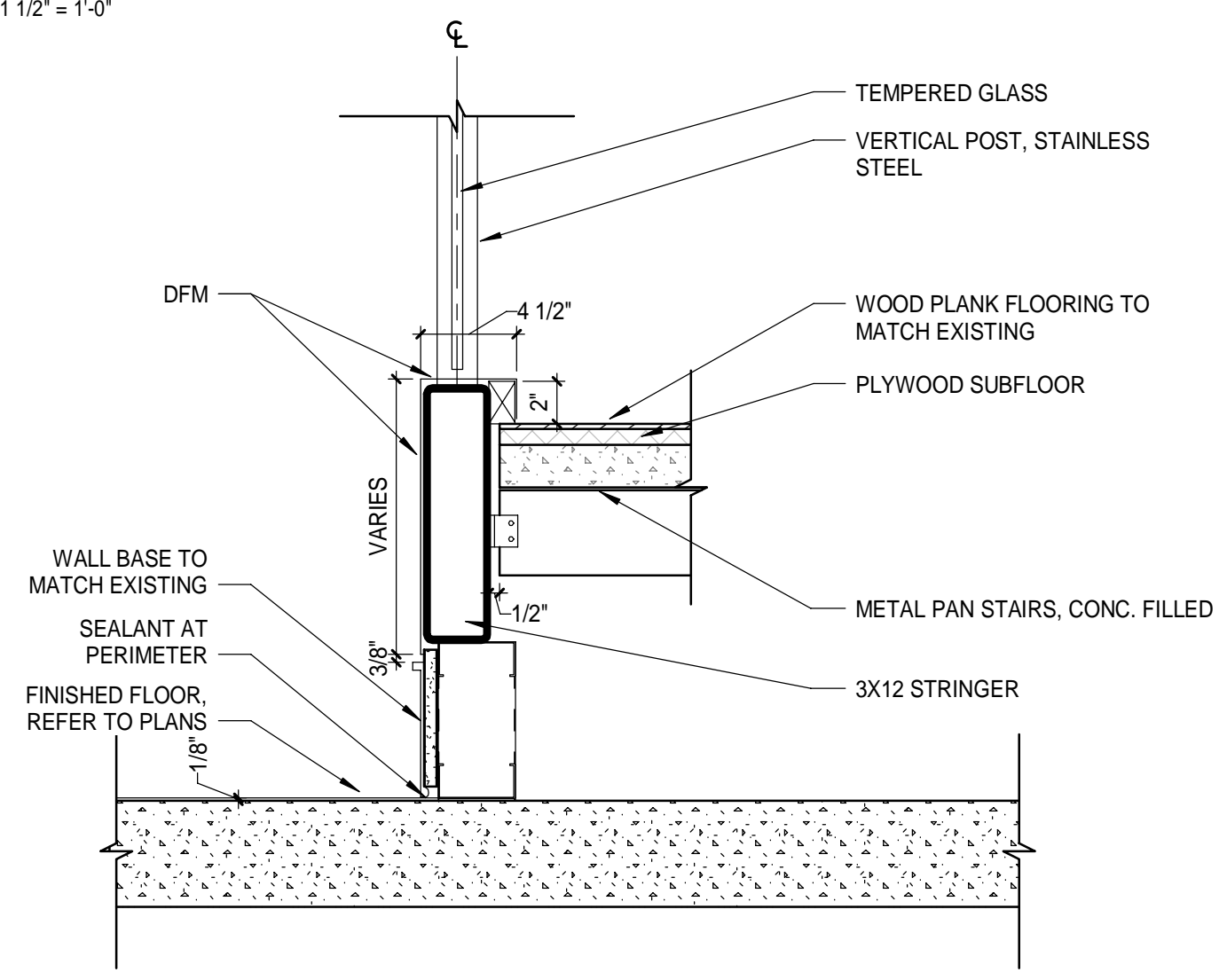
3 SECTION DETAIL - STAIR RAILING AT ELEVATOR SHAFT
 1 1/2" = 1'-0"



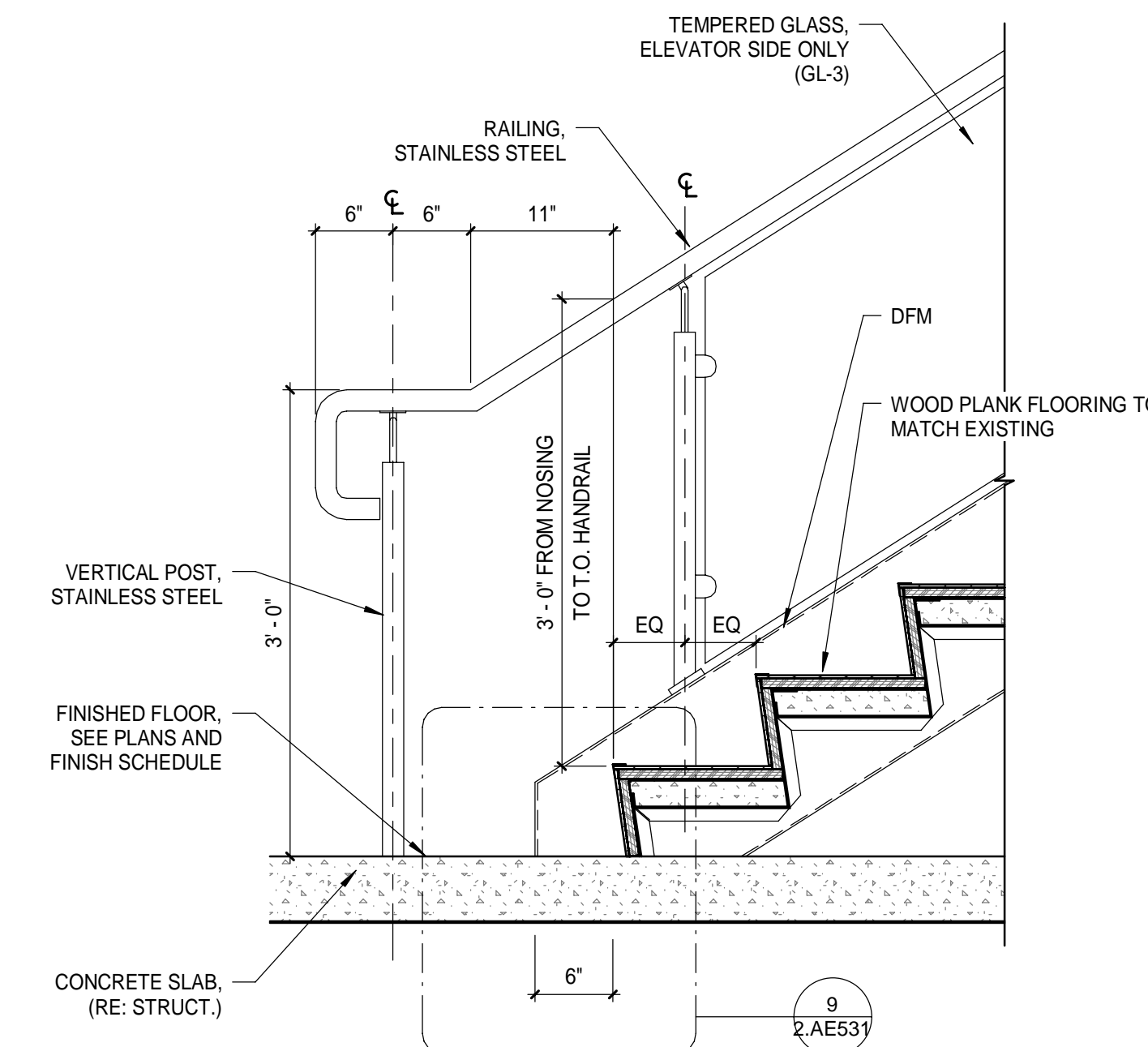
2 SECTION DETAIL - STAIR RAILING AT ESCALATOR
 1 1/2" = 1'-0"



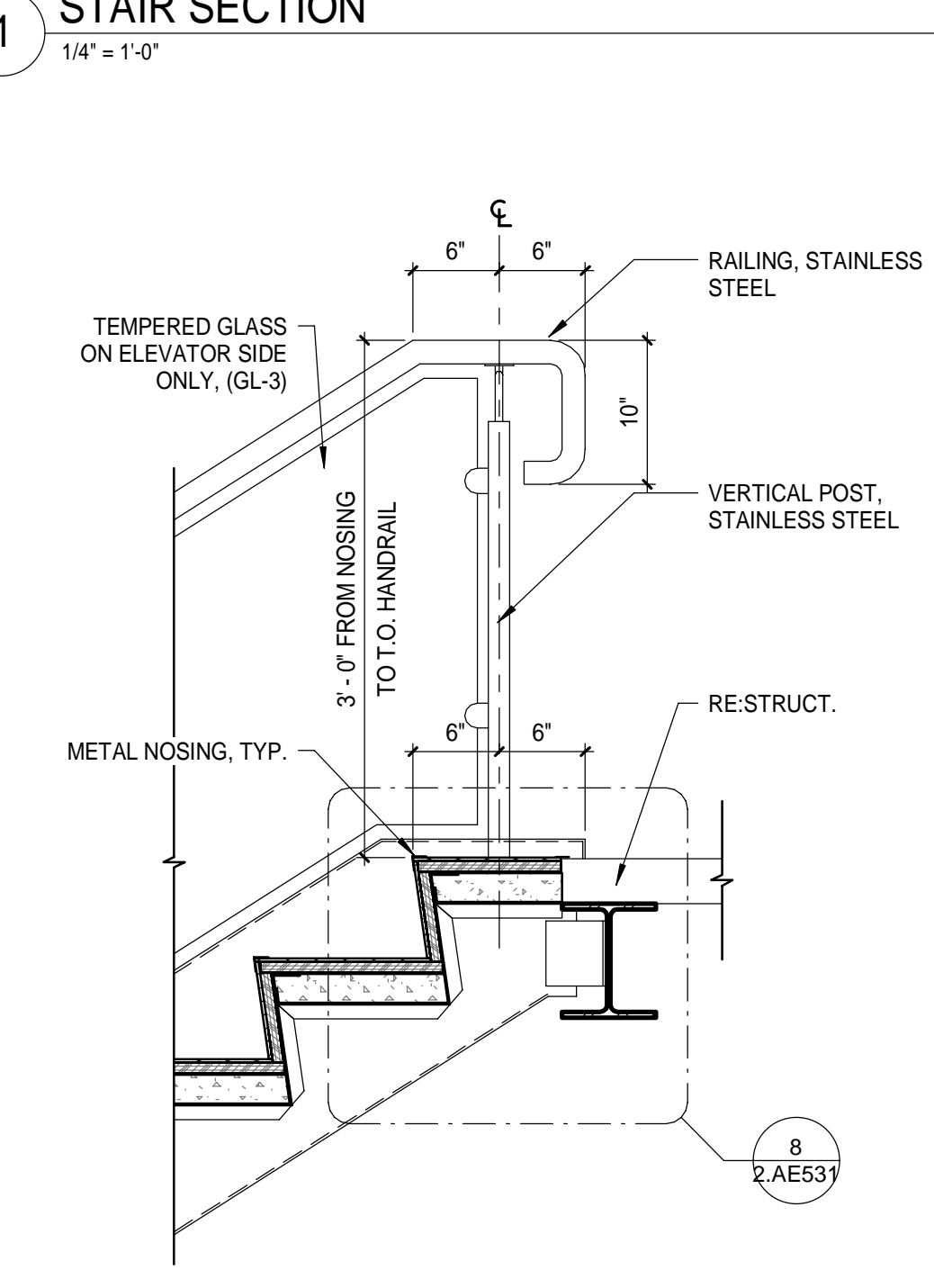
1 STAIR SECTION
 1/4" = 1'-0"



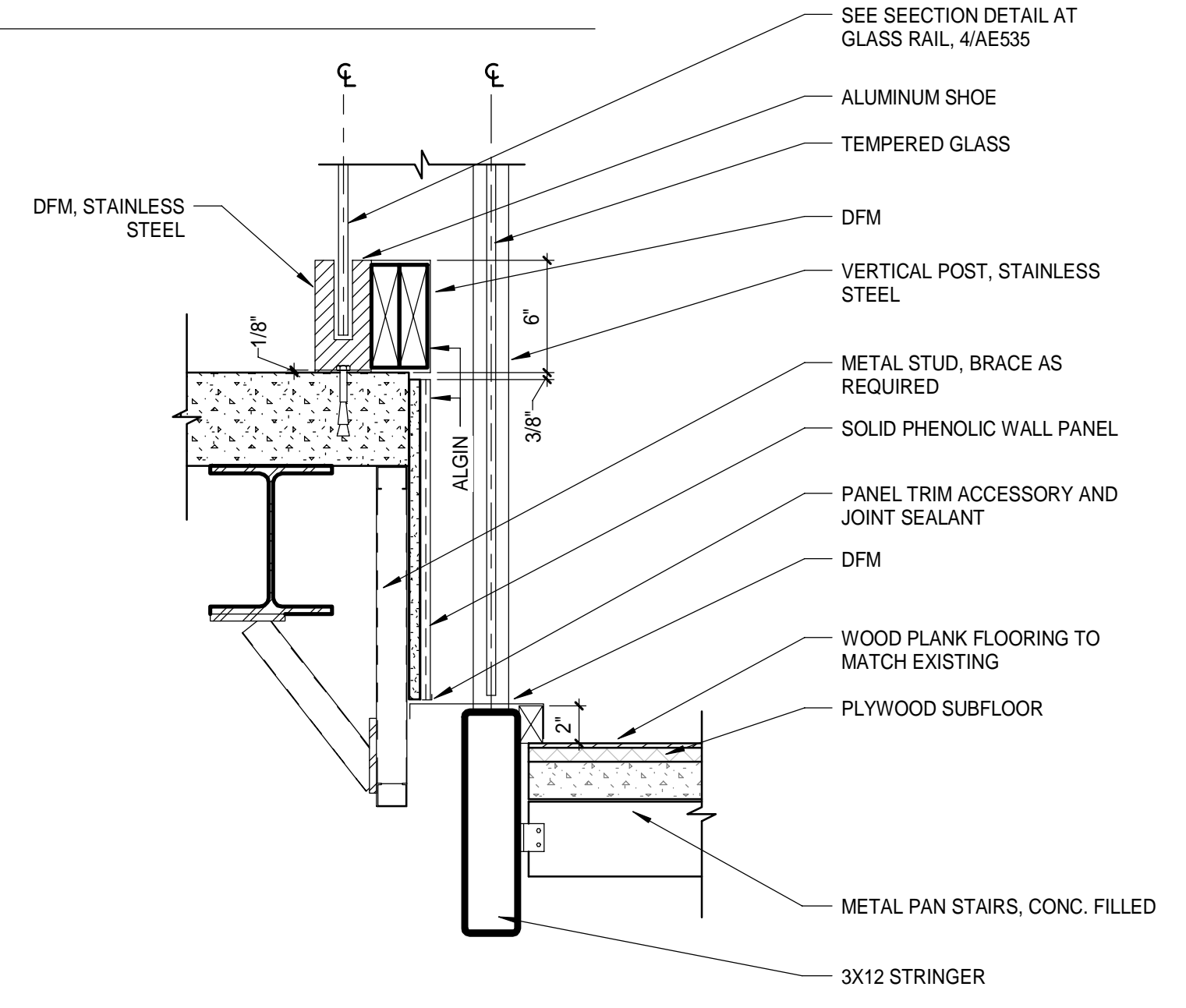
7 SECTION DETAIL AT STAIR BASE
 1 1/2" = 1'-0"



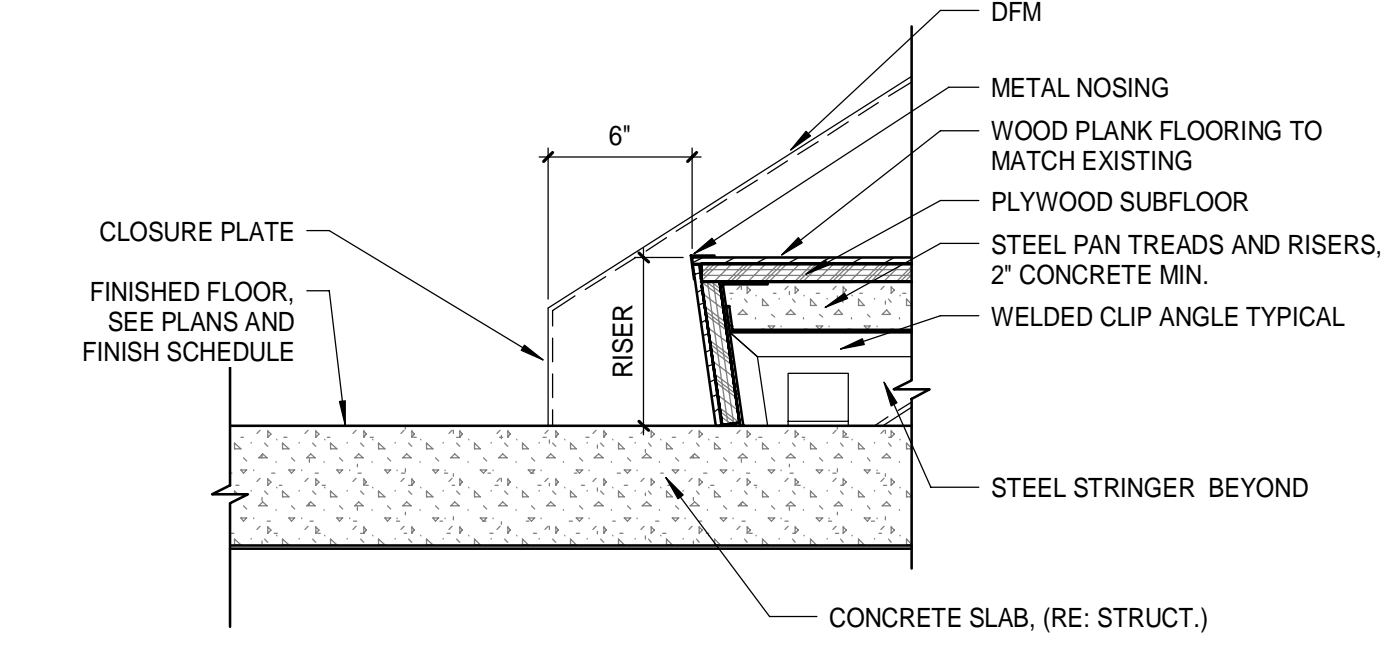
6 STAIR RAILING DETAIL AT BASE LANDING
 1" = 1'-0"



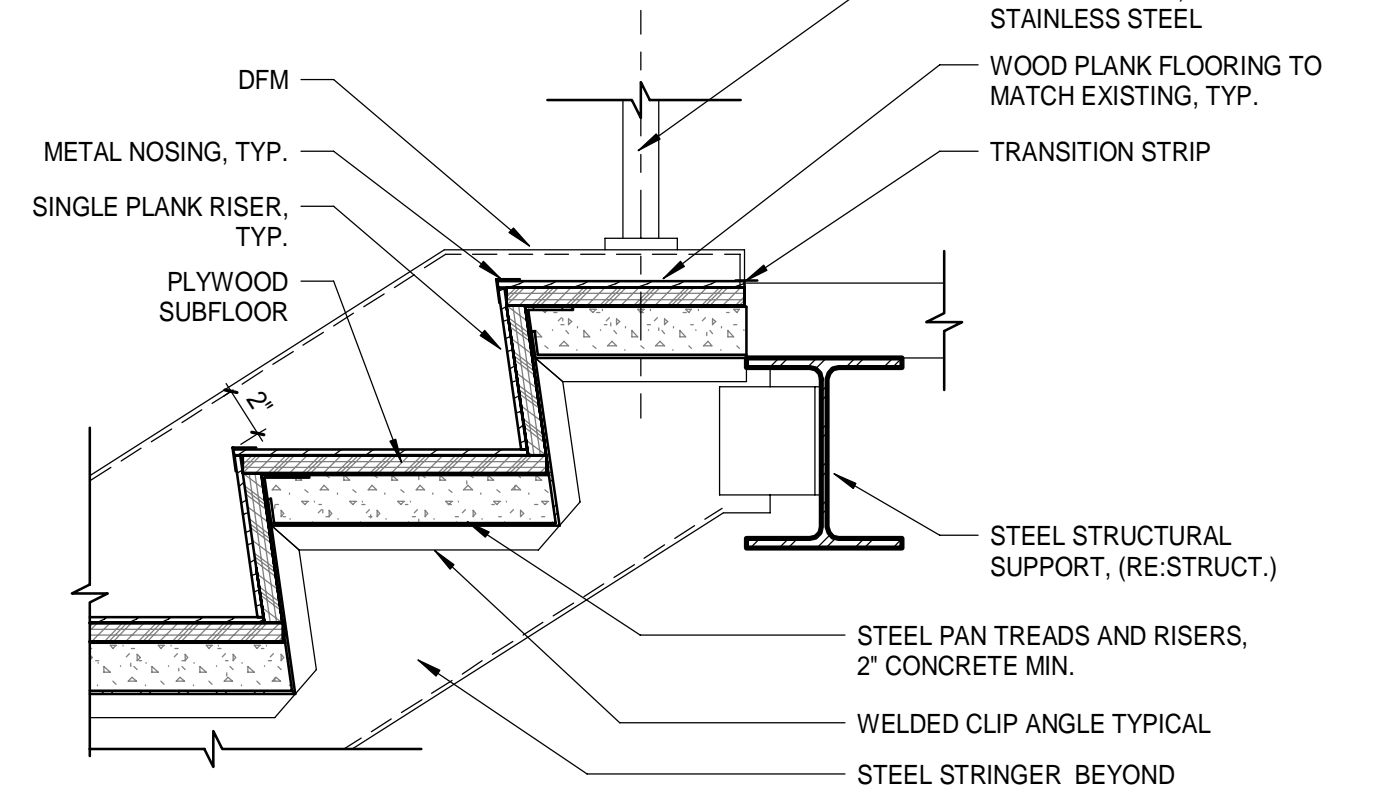
5 STAIR RAILING DETAIL AT TOP LANDING
 1" = 1'-0"



4 SECTION DETAIL - STAIR RAILING AT LANDING
 1 1/2" = 1'-0"



9 SECTION DETAIL AT STAIR BASE LANDING
 1 1/2" = 1'-0"



8 SECTION DETAIL AT TOP LANDING
 1 1/2" = 1'-0"