

GENERAL NOTES

- SEE FLOOR PLANS FOR 'PLAN NOTES'.
- SEE SHEET 2.G-001 FOR GENERAL PROJECT NOTES, LEGENDS, AND ABBREVIATIONS.
- SEE SHEET 2.G-002 FOR WALL TYPES, TOP OF WALL DETAILS, AND GENERAL MOUNTING HEIGHTS.
- FURNITURE AND OWNER PROVIDED EQUIPMENT ARE INDICATED BY DASHED LINE TYPE.
- CONTRACTOR IS RESPONSIBLE FOR THE COORDINATION OF OWNER PROVIDED EQUIPMENT INCLUDING BUT NOT LIMITED TO DIMENSIONAL INFORMATION, AND MECHANICAL, ELECTRICAL, AND PLUMBING REQUIREMENTS.
- CONTRACTOR TO PROVIDE BLOCKING FOR ALL WALL MOUNTED EQUIPMENT INCLUDING THOSE ITEMS NOT IN CONTRACT.

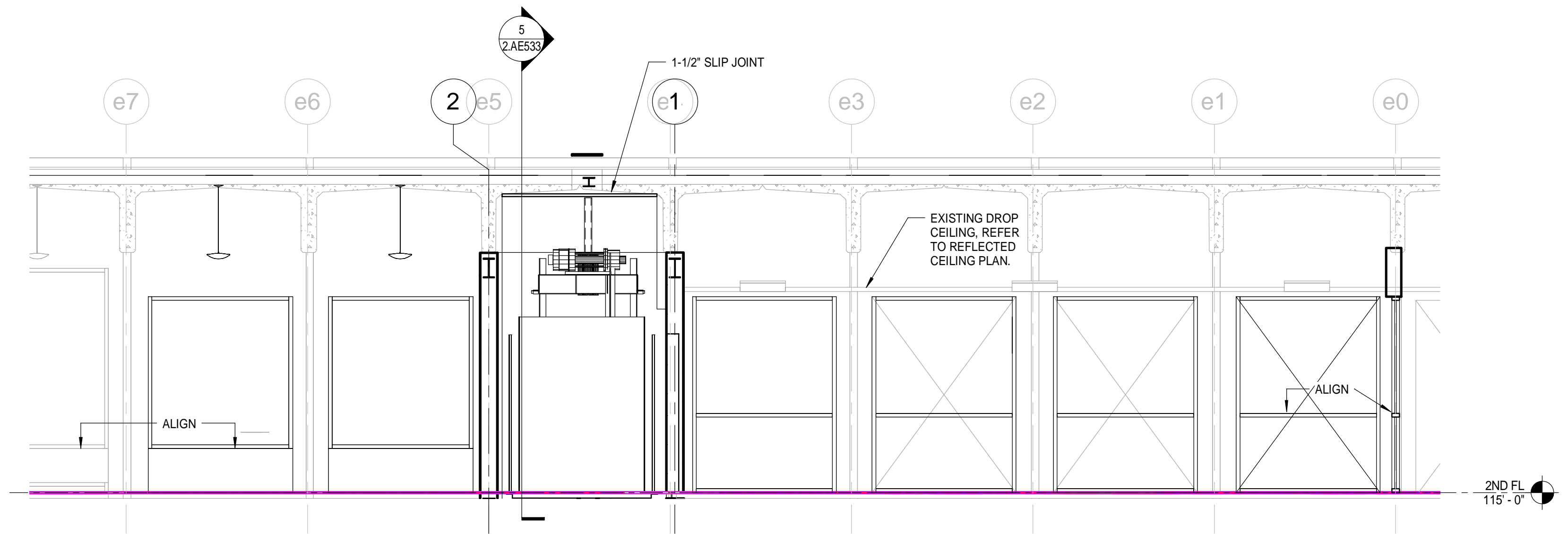
NOT FOR CONSTRUCTION

ARCHITECTURE 144 Fore Street P.O. Box 618
 Portland, Maine 04104
 ENGINEERING Tel: (207) 772-3846
 PLANNING Fax: (207) 772-1070
 INTERIORS www.smrtinc.com
 ENERGY

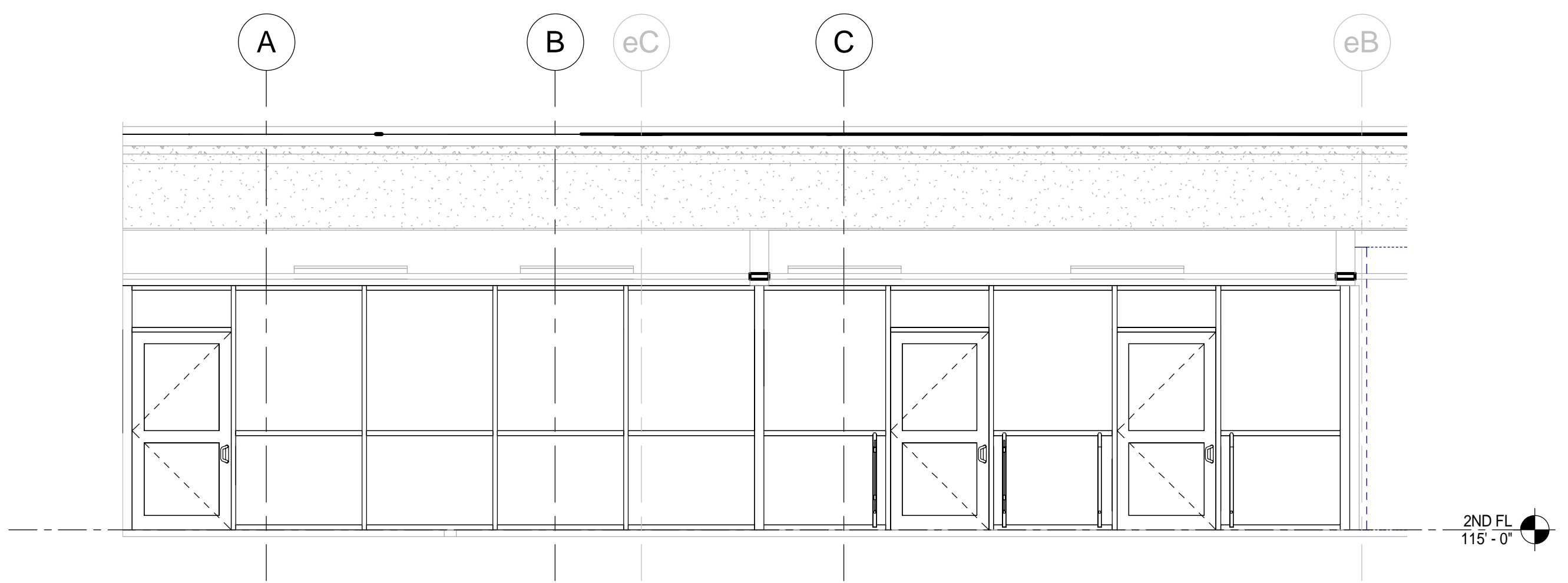
SMRT

SMRT PROJECT NO. 17033

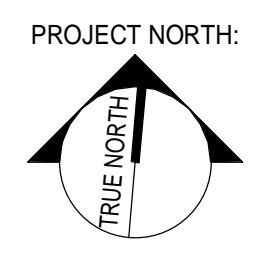
PROJECT MGR JCDRAWN A/E OF RECORD
 Author
 DFL
 Checker



1 Elevation 1 - d
 1/4" = 1'-0"



2 INT ELEV - 2ND FLOOR
 1/4" = 1'-0"



ISSUED FOR PERMIT	DATE: 12/21/17
STATUS:	BY:
THIS PLAN SHALL NOT BE MODIFIED WITHOUT WRITTEN PERMISSION FROM SEBAGO TECHNICS, INC.	
USER'S SOLE RISK AND WITHOUT LIABILITY TO SEBAGO TECHNICS, INC.	

SEBAGO
 TECHNICS

WWW.SEBAGOTECHNICS.COM
 75 John Roberts Rd., Suite 1A 250 Goddard Rd., Suite B
 South Portland, ME 04086 Portland, ME 04106
 Tel: (207) 772-3846 Fax: (207) 772-1070

PROJECT NO. | FIELD BOOK | DESIGN | CHKD | DRAWN

INTERIOR ELEVATIONS

OF:
PORTLAND INTERNATIONAL JETPORT
VERTICAL CIRCULATION IMPROVEMENTS
 1001 WESTBROOK STREET
 PORTLAND, MAINE 04102

DATE	SCALE
12/21/17	As indicated

2.AE210