

NOT FOR CONSTRUCTION

ARCHITECTURE 144 Fore Street P.O. Box 618
Portland, Maine 04104
tel. (207) 775-3846
fax. (207) 775-1070
www.smrtinc.com

ENGINEERING
PLANNING
INTERIORS
ENERGY

SMRT PROJECT NO. JCDRAWN JAE OF RECORD
17033

ISSUED FOR PERMIT	DATE: 12/21/17
STATUS:	BY:
THIS PLAN SHALL NOT BE MODIFIED WITHOUT WRITTEN PERMISSION FROM SEBAGO TECHNICS, INC. ALL CHANGES SHALL BE AT THE USER'S RISK AND WITHOUT LIABILITY TO SEBAGO TECHNICS, INC.	

SEBAGO TECHNICS

WWW.SEBAGOTECHNICS.COM
75 John Roberts Rd. - Suite 1A
South Portland, ME 04086
Tel: (207) 783-5660
Fax: (207) 783-5660

PROJECT NO. | FIELD BOOK | DESIGN | CHKD | DRAWN

2ND FLOOR - REFLECTED CEILING PLAN
OF:
PORTLAND INTERNATIONAL JETPORT
VERTICAL CIRCULATION IMPROVEMENTS
1001 WESTBROOK STREET
PORTLAND, MAINE 04102

DATE	SCALE
12/21/17	As indicated
2.AE122	

PLAN KEY NOTES

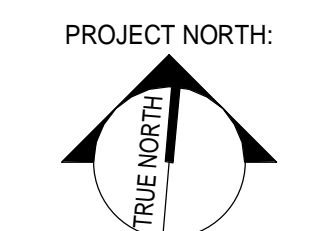
- INFILL WALL TO EXTENTS REQUIRED WHERE DOOR HAS BEEN REMOVED. FLUSH WITH EXISTING WALL ON BOTH SIDES. MATCH EXISTING WALL CONSTRUCTION.
- MECHANICAL GRILLS CENTERED IN GRID. RE: MECH.
- RELOCATE DOORS AND STOREFRONT.
- PROVIDE RUBBER TILE FLOORING TO MATCH EXISTING.
- REINSTALL NEW STOREFRONT.
- DECORATIVE METAL WALL END CAP
- COVE LIGHTING
- REMOVE ALL FASTENERS, BOXES OR OTHER ITEMS AND REPAIR CONCRETE FOR PAINT. PAINT TO MATCH.
- REFER TO ELECTRICAL FOR LIGHT FIXTURES. CENTER LIGHT FIXTURES IN RECESS TO MATCH EXISTING.
- REINSTALL CEILING AS SHOWN OR PROVIDE MATCHING PANELS/AS REQUIRED FOR CONSISTENT APPEARANCE.
- LIGHT FIXTURE, RE: ELEC.
- RELOCATED EXISTING LIGHT FIXTURE, RE: ELEC.
- TEMPORARILY PROVIDE OPENING FOR PUBLIC AT THIS LOCATION. RELOCATE AT COMPLETION.
- PROVIDE NEW CEILING MOUNTED SIGNS
*DEPARTURES
ALL AIRLINES
TICKETING
TSA SCREENING ---->
ARRIVALS
BAGGAGE CLAIM
GROUND TRANSPORTATION
-----<
- REINSTALL SIGN "RESTROOMS"
"BAGGAGE CLAIM GROUND TRANSPORTATION"
- REMOVE "ELEVATOR" SIGN AT COMPLETION & REPAIR WALL
- PROVIDE NEW CEILING MONTE SIGN (2 SIDES) "PARKING RENTAL CARS"
- REINSTALL TOILET ROOM ADA SIGNS
- NEW TILE AREA, ROOM [1200] CIRCULATION
- FLOOR DOOR, LOCATED ABOVE EXISTING CONDUITS
- REMOVE TEMPORARY PARTITION AT WORK COMPLETION
- PROVIDE GYPSUM BOARD AND WOOD WALL CAP TO FINISH CUT RAILING END FLAT.

GENERAL NOTES

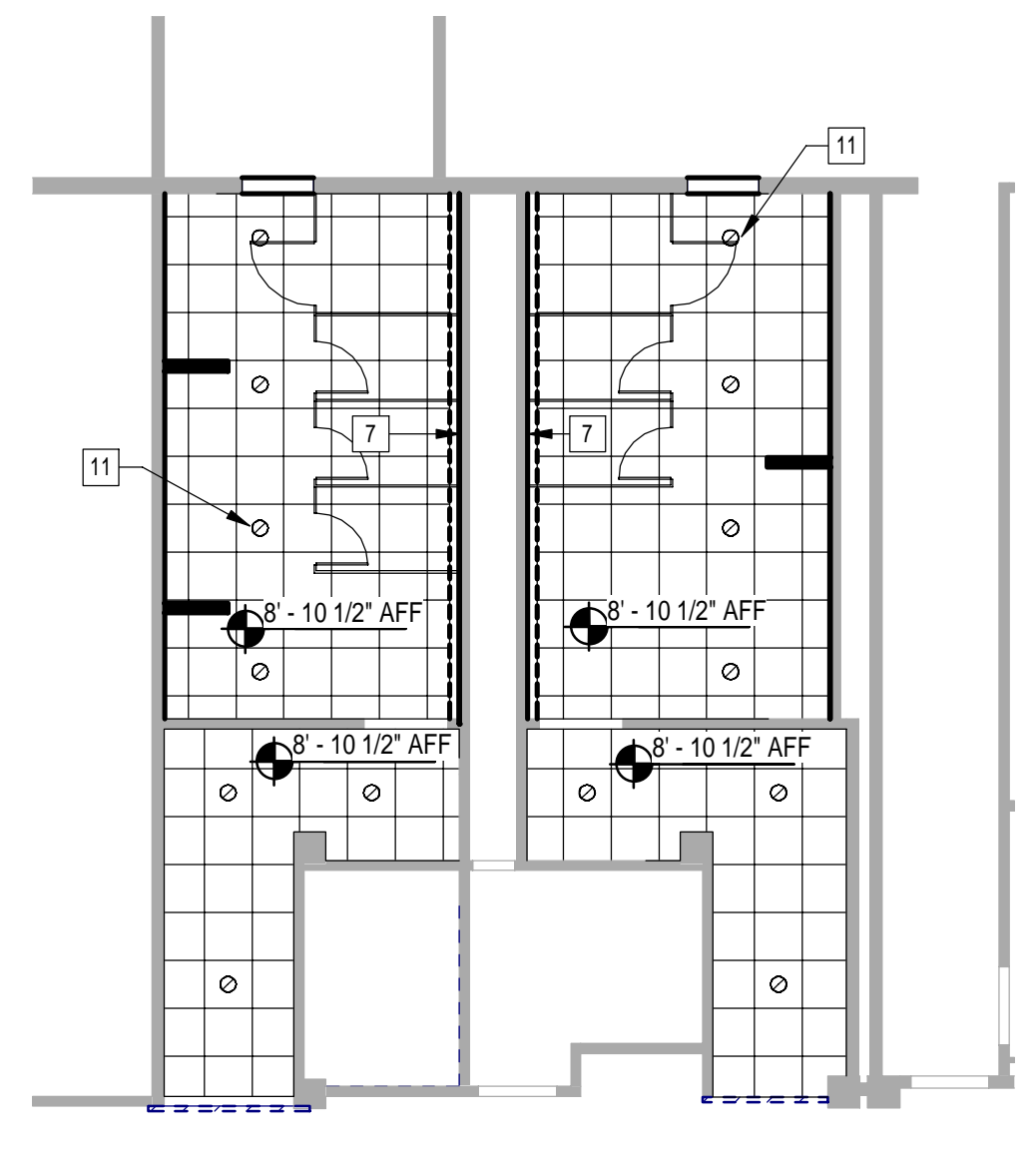
- SEE SHEET 2.G-001 FOR GENERAL PROJECT NOTES, LEGENDS, AND ABBREVIATIONS.
- SEE FINISH SCHEDULE FOR CEILING AND CEILING GRID TYPES.
- EXCEPT WHERE INDICATED, CENTER CEILING GRIDS IN ROOMS. USE HALF TILES OR GREATER AT PERIMETERS WHEN POSSIBLE.
- ALIGN CEILING ITEMS AS SHOWN, WITH COMMON CENTERLINES TYPICALLY. CENTER ITEMS IN CEILING, OR IN AREAS UNLESS INDICATED OTHERWISE.
- WHERE REGULAR OR BEVELED TILE IS USED, PAINT ALL CUT EDGES TO MATCH.
- CAULK JOINT BETWEEN CEILING GRID (WALL ANGLE) AND WALL WHERE GAPS ARE LARGER THAN 1/8" OR GREATER.
- PROVIDE ACCESS PANELS AS REQUIRED IN GWB CEILINGS FOR ACCESS AS REQUIRED BY ALL TRADES.
- FIRE SPRINKLERS SHALL BE CENTERED IN CEILING TILE OR HALF TILE AS SHOWN. FIRE SPRINKLERS SHALL BE LOCATED IN ALIGNMENT WITH OTHER CEILING ITEMS AND SHALL BE PLACED IN COORDINATION WITH LIGHTING FIXTURE POSITIONS INDICATED, TYPICAL.
- FIRE SPRINKLERS SHOWN ARE FOR COORDINATION PURPOSES ONLY. ADDITIONAL SPRINKLER HEADS MAY BE REQUIRED FOR CODE COMPLIANCE, AS DETERMINED BY THE FIRE PROTECTION DESIGNER. SPRINKLERS ARE NOT SHOWN IN ALL AREAS WHERE REQUIRED. FIRE PROTECTION CONTRACTOR SHALL BE RESPONSIBLE FOR PROVIDING A COMPLETE AND FULLY CODE COMPLIANT SYSTEM, INCLUDING HEADS NOT INDICATED IN THIS DRAWING. SIDEWALL MOUNT SPRINKLER HEADS UNDER BALCONIES ARE NOT SHOWN IN THE CEILING PLANS.
- SEE MECHANICAL, ELECTRICAL AND PLUMBING DRAWINGS FOR ADDITIONAL INFORMATION.
- WHERE ARCHITECTURAL DRAWINGS DEPICT MECHANICAL OR ELECTRICAL ITEMS OR EQUIPMENT (LIGHTS, DIFFUSERS, ETC.) INSTALLATION OF SUCH ITEMS SHALL BE COORDINATED WITH EACH RESPECTIVE TRADE SUB-CONTRACTORS.
- WHERE DRAWINGS DO NOT ACCESS INSTALLATION METHODOLOGY, THE CONTRACTOR SHALL BE BOUND TO PERFORM IN STRICT COMPLIANCE WITH THE MANUFACTURER'S SPECIFICATIONS, AND STANDARD INDUSTRY STANDARDS.

CEILING LEGEND:

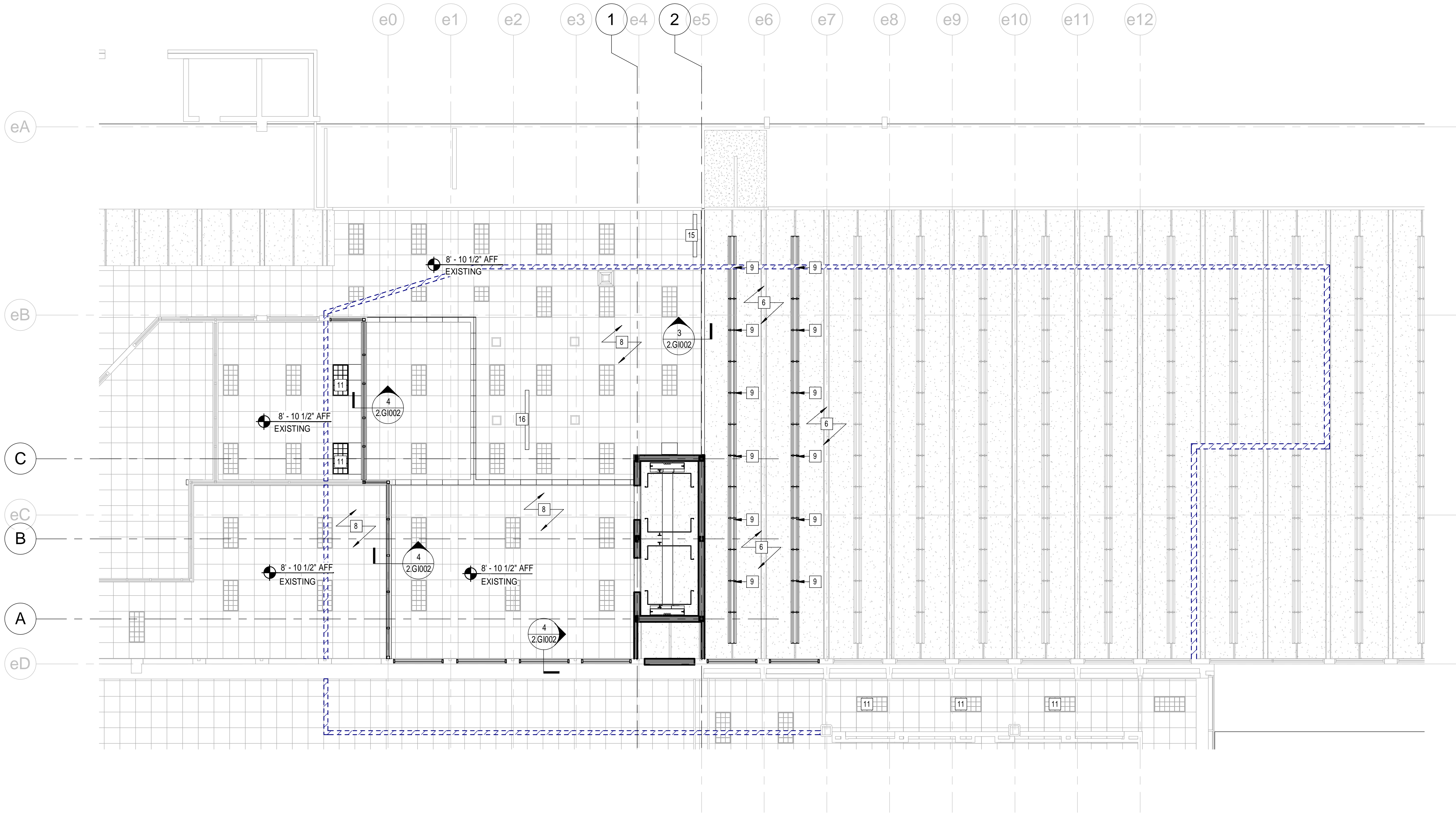
	2x2 CEILING TILE AND GRID
	2x4 CEILING TILE AND GRID
	GWB CEILING
	DOWN LIGHT
	2x2 LIGHT FIXTURE
	2x4 LIGHT FIXTURE
	1x4 LIGHT FIXTURE
	SUPPLY DIFFUSER
	RETURN DIFFUSER
	EXHAUST DIFFUSER
	LINEAR DIFFUSER



KEY PLAN
N.T.S. (FO)



2 2ND FLOOR - RESTROOM RCP
1/8" = 1'-0"



1 2ND FLOOR - REFLECTED CEILING PLAN
1/8" = 1'-0"