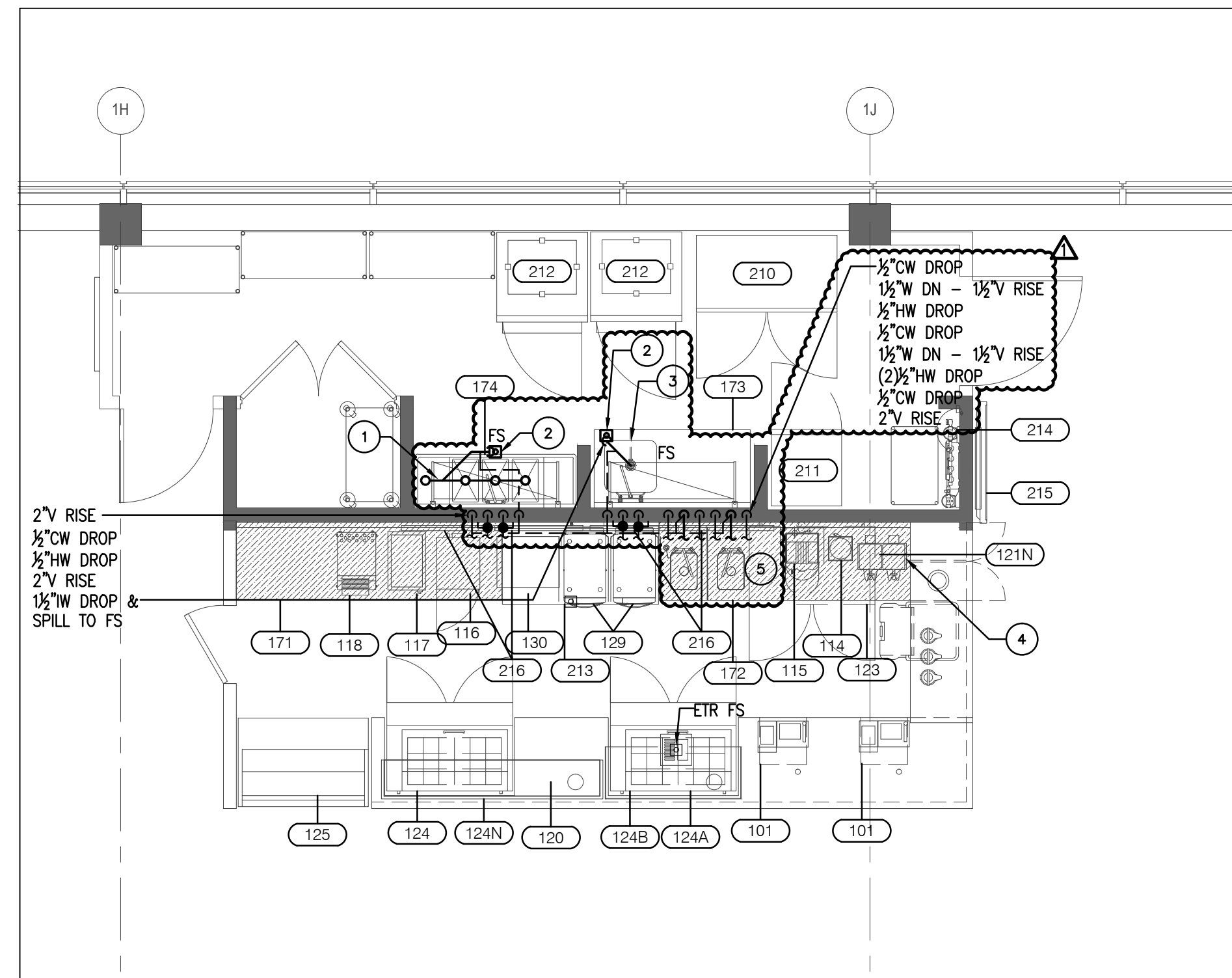


**1 PLUMBING DEMO PLAN**  
1/4"=1'-0"

**PLUMBING DEMOLITION NOTES**

- 1 REMOVE EXISTING 3 COMPARTMENT SINK AND FAUCET, HAND SINK AND FAUCET. CUT AND CAP EXISTING COLD AND HOT WATER, WASTE AND VENT PIPING.
- 2 EXISTING COFFEE BREWERS TO BE REMOVED AND REPLACED.
- 3 EXISTING FLOOR SINK AND ALL ASSOCIATED PIPING TO REMAIN



**3 PLUMBING PLAN**  
1/4"=1'-0"

**PLUMBING KEY NOTES**

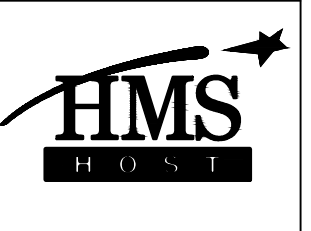
- 1 NEW 3 COMPARTMENT SINK AND FAUCET WITH ALL NEW CONNECTIONS. CONNECT ALL NEW PLUMBING SERVICES TO EXISTING PLUMBING SERVICES.
- 2 NEW FLOOR SINK. EXTEND NEW WASTE LINE FROM FLOOR SINK AND CONNECT TO EXISTING SANITARY LINE TO BUILDING GREASE INTERCEPTOR. EXTEND NEW VENT LINE AND CONNECT TO EXISTING VENT PIPING.
- 3 NEW HAND SINK AND FAUCET WITH ALL NEW 1/2" COLD AND HOT WATER CONNECTION, NEW 1/2" W DRAIN AND SPILL TO FS WITH AN AIR GAP. EXTEND COLD AND HOT WATER PIPING AND CONNECT TO EXISTING. EXTEND NEW VENT PIPING AND CONNECT TO EXISTING VENT PIPING.
- 4 NEW COFFEE BREWER WITH ALL FW CONNECTION. CONNECT TO EXISTING FILTERED WATER.
- 5 TWO NEW DROP IN SINKS WITH ALL NEW 1/2" HOT AND COLD WATER CONNECTIONS AND CONNECT TO EXISTING HOT AND COLD WATER LINE. EXTEND NEW 1/2" WASTE LINE FROM SINKS AND CONNECT TO EXISTING SANITARY/WASTE LINE. EXTEND NEW 1/2" VENT LINE FROM SINKS AND CONNECT TO EXISTING VENT PIPING.

**DRAWING NOTES**

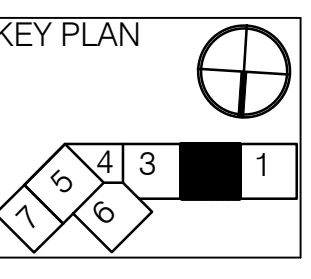
- 1. REFER TO DRAWING P100 FOR PLUMBING LEGEND AND DETAILS.
- 2. REFER TO DRAWING P300 FOR PLUMBING SPECIFICATIONS.

EQUIPMENT SCHEDULE- FYI ONLY; REVIEW MEP DRAWINGS FOR ALL INFORMATION																							
NEW EQPM	ITEM NO	QTY	MANUFACTURER	MODEL NUMBER	EQUIPMENT CATEGORY	AMPS	KW	HP	VOLTS	PHASE	DIRECT	PLUG	NEMA	Notes	ELECTRICAL AFF (IN)	COLD WATER SIZE (IN)	HOT WATER AFF (IN)	HOT WATER SIZE (IN)	HOT WATER AFF (IN)	DIRECT DRAIN SIZE (IN)	DIRECT DRAIN SIZE (IN)	INDIRECT DRAIN SIZE (IN)	
	101	2	HMS HOST	-	POS, FOOD									EXIST									
	110		NOT USED	-	-																		
	111-113		SPARE #	-	-																		
	114	1	BLENDETEC	Q SERIES	BLENDER	12.5	1.5		120	1	X		5-15P	EXIST									
			BLENDETEC		SPARE CONTAINER AND LID FOR #114																		
	115	1	CIMBALLI	M1 TURBOSTEAM	ESPRESSO		3.6		208-240	1	X			EXIST	Filtered Water	0.375					XX		
	116	2	AMANA APPLIANCES	HDC18SD2	OVEN, MICROWAVE	15.3	3.0		208-240	1	X		6-20P	EXIST									
	117	1	APW WYOTT	CW-2A	COOKER/WARMER	12.5	1.5		120	1	X		5-15P	EXIST									
	118	1	MERCO SAVORY	RT2VSHO	TOASTER, CONVEYOR	19.5			208	1	X		6-30P	EXIST									
	119	1	NOT USED	-	-																		
	120	1	HATCO	GRSDH-30 - EXISTING	FOOD WARMER	8.1			120	1	X		5-15P	EXIST									
	121		NOT USED	-	-																		
	121N	1	BUNN 1.5 GALLON BREWER	-	-	15	3.55		120/208-240	1	X			Filtered Water	48	0.375					1.5		
	122		NOT USED	-	-																		
	123	1	TRUE FOOD SERVICE	TUC-48 ADA	REFRIGERATOR, UNDERCOUNTER, COMPACT	5.0	0.2		115	1	X		5-15P	EXIST		12							
	124	2	TRUE FOOD SERVICE	TSSU-48-18M-B-ST	REFRIGERATOR, SANDWICH/SALAD PREP	7.8	0.33		115	1	X		5-15P	EXIST		12							
	124A	1	CUSTOM	GAB-SANDWICH UNIT OVERSHELVES	SHELF, SANDWICH/SALAD PREP				120	1	X			EXIST									
	124B	1	CUSTOM/Z-guard	-	SNEEZE GUARD									EXIST									
	124N	1	84" CUSTOM/Z-guard	-	SNEEZE GUARD W/ LED LIGHT TAPE									REMOVE ONE OF 2 THAT EXIST									
	125	1	QBD	CVRXX50SS2-SZ	50" SELF SERVE REFR. (with NIGHT GATE & LOCK)	12.0			120	1	X		5-15P	EXIST									
					Evaporator Pan	8.4			120	1	X		5-15P										
	126N	4	BUNN	-	AIRPOT SERVERS																		
	127	2	PENDING	-	TRASH RECEPTACLE - by others																		
	128	1	ICE CADDY	CAMBRO	ICS100									EXIST									
	129	2	TURBOCHEF	SOTA	MICROWAVE CONVECTION OVEN	30	6.2		208-240	1	X		6-30P		48								
	130	1	HATCO GLO-RAY	GRSDH-24	HORIZONTAL DISPLAY WARMER	6.9			120	1	X		5-15P		48								
	171	1	ELKAY CUSTOM	STAINLESS STEEL	102" COUNTER W/ PULL OUT SHELVES									SIM TO SHOP DRAWING (ATTACHED)									
	172	1	CUSTOM	STAINLESS STEEL	96" COUNTER W/ (2) SINKS (DUMP/HAND) & FAUCETS									VERIFY LENGTH PRIOR TO FABRICATION									
	173	1	ELKAY (?)	STAINLESS STEEL	PREP SINK W/ COUNTER									I.W.									XX
	174	1	CUSTOM	STAINLESS STEEL	62" 3-BOWL SINK W/ L & R DRAIN BOARDS & FAUCET									SIM TO SHOP DRAWING (ATTACHED); VERIFY MAX SIZE									
	201		FOCUS	(2) 3 X 4 TIER, 1(2) X 4 TIER	SHELVING, WIRE									EXIST									
	202	1	FOCUS	18"X30"	SHELVING, WIRE									EXIST									
	203	3	FOCUS	18"X48"	SHELVING, WIRE																		
	204	1	FOCUS	18"X36"	SHELVING, WIRE																		
	205	2	FOCUS	14"X48"X2	WALL SHELVING, WIRE									PROVIDE BLOCKING									
	210	1	DELFIELD	6051 XL-S	REFRIGERATOR, REACH-IN	9.1	0.5		115	1	X		5-15P	EXIST		12							
	211	1	TRUE	T-23	REFRIGERATOR, REACH-IN	7.6	0.3		115	1	X		5-15P	EXIST		12							
	212	2	TRUE	TAIFRI	1 EXIST, 1 NEW	12	0.3		115	1	X		5-15P		12								
	213	1	DELFIELD	UCD464N	UNDERCOUNTER FRIDGE W/ DRAWERS	3.9	1/5		115	1	X		5-15P		12								
	214	1	EVERPURE	EV9437-10	FILTER SYSTEM, COMBINATION APPLICATIONS									EXIST		0.75	72						
	215	1	MONITOR	-	50" MONITOR ON ADJUSTABLE MOUNT									EXIST									
	216	4	LG MONITOR	49SM5B	49" MEDIA PLAYER W/ MOUNT				100-240			X											

Item	Date
Bid	032117
Permit	032417
REV #1	082817

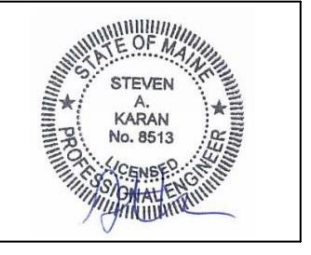


**Great American Bagel Renovations**  
Portland Intl Airport PWM  
1001 Westbrook Street  
Portland ME 04102



**HMS Host**  
6905 Rockledge Drive  
Bethesda, MD 20817  
T: (240) 694-4746  
F: (240) 694-6443  
C: (240) 274-6417  
E: scott.reimink@hmshost.com

**Building Engineering Resources, Inc.**  
66 Main Street  
North Easton, MA 02356  
T: (508) 230-0260  
F: (508) 230-0365  
E: ber@ber-engineering.com



**LLOYD ARCHITECTS**  
32 Court St. Plymouth, MA 02360  
TEL: (508) 746-4946  
F: (508) 746-4946  
E-MAIL: info@lloydarch.com

Job #: 16414  
Scale: As noted  
Issued: 032117

PLUMBING PLANS

P200