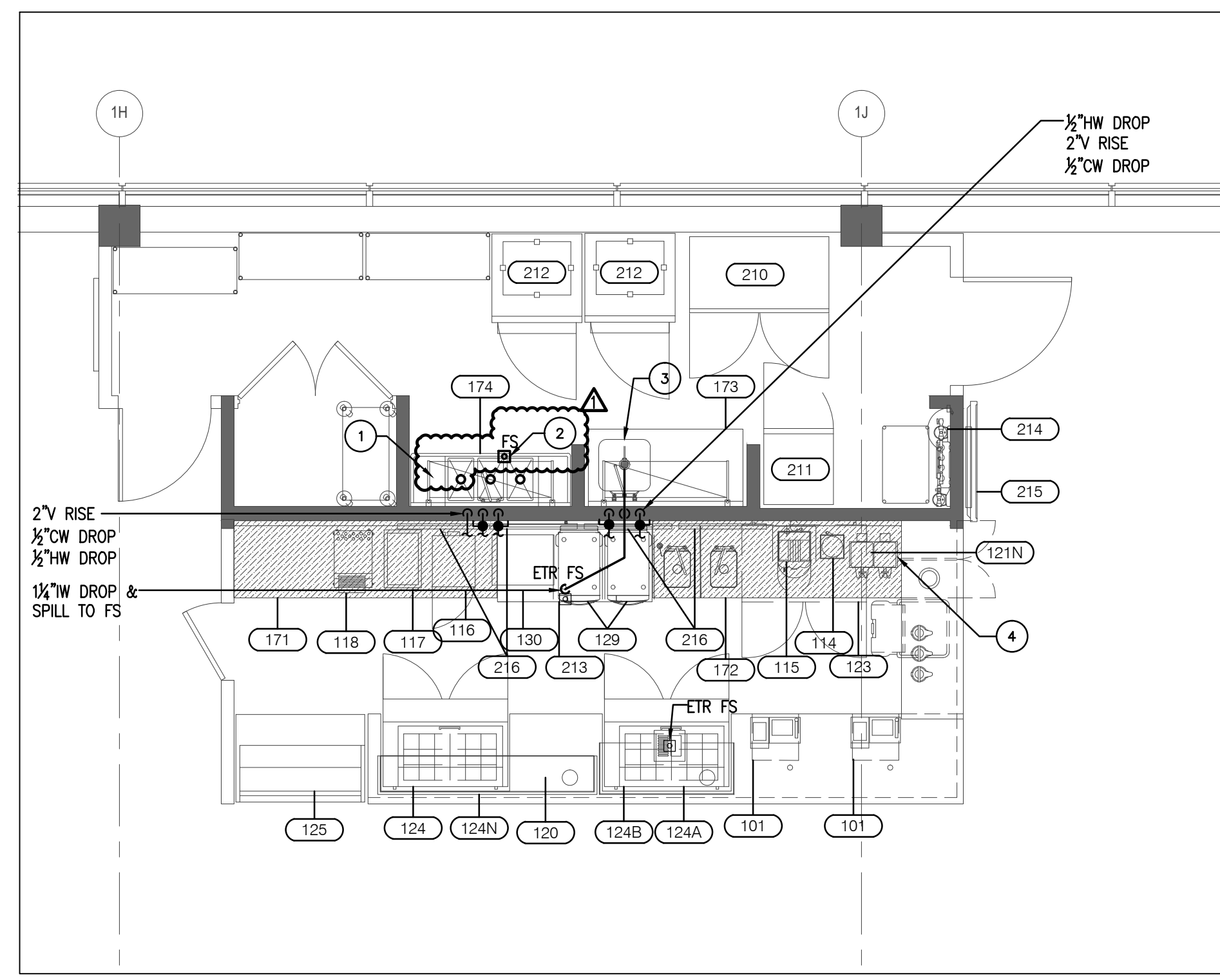


1 PLUMBING DEMO PLAN  
1/4"=1'-0"

PLUMBING DEMOLITION NOTES

- 1 REMOVE EXISTING 3 COMPARTMENT SINK AND FAUCET, HAND SINK AND FAUCET. CUT AND CAP EXISTING COLD AND HOT WATER, WASTE AND VENT PIPING.
- 2 EXISTING COFFEE BREWERS TO BE REMOVED AND REPLACED.
- 3 EXISTING FLOOR SINK AND ALL ASSOCIATED PIPING TO REMAIN



3 PLUMBING PLAN  
1/4"=1'-0"

PLUMBING KEY NOTES

- 1 NEW 3 COMPARTMENT SINK AND FAUCET WITH ALL NEW CONNECTIONS. CONNECT ALL NEW PLUMBING SERVICES TO EXISTING PLUMBING SERVICES.
- 2 NEW FLOOR SINK. EXTEND NEW WASTE LINE FROM FLOOR SINK AND CONNECT TO EXISTING. EXTEND NEW VENT LINE AND CONNECT TO EXISTING VENT PIPING.
- 3 NEW HAND SINK AND FAUCET WITH ALL NEW COLD AND HOT WATER CONNECTION, NEW 1/2" W DROP AND SPILL TO FS WITH AN AIR GAP. EXTEND COLD AND HOT WATER PIPING AND CONNECT TO EXISTING. EXTEND NEW VENT PIPING AND CONNECT TO EXISTING VENT PIPING.
- 4 NEW COFFEE BREWER WITH ALL FW CONNECTION. CONNECT TO EXISTING FILTERED WATER.

DRAWING NOTES

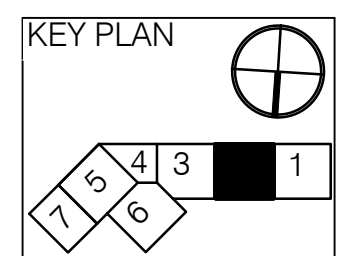
- 1. REFER TO DRAWING P100 FOR PLUMBING LEGEND AND DETAILS.
- 2. REFER TO DRAWING P300 FOR PLUMBING SPECIFICATIONS.

EQUIPMENT SCHEDULE- FYI ONLY; REVIEW MEP DRAWINGS FOR ALL INFORMATION																						
NEW EQPM	ITEM NO	QTY	MANUFACTURER	MODEL NUMBER	EQUIPMENT CATEGORY	AMPS	KW	HP	VOLTS	PHASE	DIRECT	PLUG	NEMA	Notes	ELECTRICAL AFF (IN)	COLD WATER SIZE (IN)	HOT WATER SIZE (IN)	HOT WATER AFF (IN)	DIRECT DRAIN SIZE (IN)	DEFLECT DRAIN SIZE (IN)	INDIRECT DRAIN SIZE (IN)	
	101	2	HMS HOST	-	POS, FOOD									EXIST								
	110		NOT USED	-	-																	
	111-113		SPARE #	-	-																	
	114	1	BLENDTEC	Q SERIES	BLENDER	12.5	1.5		120	1	X		5-15P	EXIST								
			BLENDTEC		SPARE CONTAINER AND LID FOR #114																	
	115	1	CIMBALLI	M1 TURBOSTEAM	ESPRESSO		3.6		208-240	1	X			EXIST	Filtered Water	0.375				XX		
	116	2	AMANA APPLIANCES	HDC18SD2	OVEN, MICROWAVE	15.3	3.0		208-240	1	X		6-20P	EXIST								
	117	1	APW WYOTT	CW-2A	COOKER/WARMER	12.5	1.5		120	1	X		5-15P	EXIST								
	118	1	MERCO SAVORY	RT2VSHO	TOASTER, CONVEYOR	19.5			208	1	X		6-30P	EXIST								
	119	1	NOT USED	-	-																	
	120	1	HATCO	GRSDH-30 - EXISTING	FOOD WARMER	8.1			120	1	X		5-15P	EXIST								
	121		NOT USED	-	-																	
	121N	1	BUNN 1.5 GALLON BREWER			15	3.55		120/208-240	1	X			Filtered Water	48	0.375				1.5		
	122		NOT USED	-	-																	
	123	1	TRUE FOOD SERVICE	TUC-48 ADA	REFRIGERATOR, UNDERCOUNTER, COMPACT	5.0	0.2		115	1	X		5-15P	EXIST		12						
	124	2	TRUE FOOD SERVICE	TSSU-48-18M-B-ST	REFRIGERATOR, SANDWICH/SALAD PREP	7.8	0.33		115	1	X		5-15P	EXIST		12						
	124A	1	CUSTOM	GAB SANDWICH UNIT OVERSHELVES	SHELF, SANDWICH/SALAD PREP				120	1	X			EXIST								
	124B	1	CUSTOM/Z-guard		SNEEZE GUARD									EXIST								
	124N	1	84" CUSTOM/Z-guard		SNEEZE GUARD W/ LED LIGHT TAPE									REMOVE ONE OF 2 THAT EXIST								
	125	1	QBD	CVRXX50SS2-SZ	50" SELF SERVE REFR. (with NIGHT GATE & LOCK)	12.0			120	1	X		5-15P	EXIST								
					Evaporator Pan	8.4			120	1	X		5-15P	EXIST								
	126N	4	BUNN		AIRPOT SERVERS																	
	127		PENDING	-	TRASH RECEPTACLE - by others																	
	128	1	ICE CADDY	CAMBRO	ICS100									EXIST								
	129	2	TURBOCHEF	SOTA	MICROWAVE CONVECTION OVEN	30	6.2		208-240	1	X		6-30P		48							
	130	1	HATCO GLO-RAY	GRSDH-24	HORIZONTAL DISPLAY WARMER	6.9			120	1	X		5-15P		48							
	171	1	ELKAY CUSTOM	STAINLESS STEEL	102" COUNTER W/ PULL OUT SHELVES									SIM TO SHOP DRAWING (ATTACHED)								
	172	1	CUSTOM	STAINLESS STEEL	96" COUNTER W/ (2) SINKS (DUMP/HAND) & FAUCETS									VERIFY LENGTH PRIOR TO FABRICATION								
	173	1	ELKAY (?)	STAINLESS STEEL	PREP SINK W/ COUNTER									I.W.								XX
	174	1	CUSTOM	STAINLESS STEEL	62" 3-BOWL SINK W/ L & R DRAIN BOARDS & FAUCET									SIM TO SHOP DRAWING (ATTACHED); VERIFY MAX SIZE								
	201		FOCUS	(2)3 X 4 TIER, 1(2) X 4 TIER	SHELVING, WIRE									EXIST								
	202	1	FOCUS	18"X30"	SHELVING, WIRE									EXIST								
	203	3	FOCUS	18"X48"	SHELVING, WIRE																	
	204	1	FOCUS	18"X36"	SHELVING, WIRE																	
	205	2	FOCUS	14"X48"X2	WALL SHELVING, WIRE									PROVIDE BLOCKING								
	210	1	DELFIELD	6051 XL-S	REFRIGERATOR, REACH-IN	9.1	0.5		115	1	X		5-15P	EXIST		12						
	211	1	TRUE	T-23	REFRIGERATOR, REACH-IN	7.6	0.3		115	1	X		5-15P	EXIST		12						
	212	2	TRUE	TAIFRI	1 EXIST, 1 NEW	12	0.3		115	1	X		5-15P		12							
	213	1	DELFIELD	UCD4464N	UNDERCOUNTER FRIDGE W/ DRAWERS	3.9	1/5		115	1	X		5-15P		12							
	214	1	EVERPURE	EV9437-10	FILTER SYSTEM, COMBINATION APPLICATIONS									EXIST		0.75	72					
	215	1	MONITOR		50" MONITOR ON ADJUSTABLE MOUNT									EXIST								
	216	4	LG MONITOR	49SM5B	49" MEDIA PLAYER W/ MOUNT				100-240				X									

Item	Date
Bid	032117
Permit	032417
REV #1	081017



Great American Bagel Renovations  
Portland Intl Airport PWM  
1001 Westbrook Street  
Portland ME 04102



HMS Host  
6905 Rockledge Drive  
Bethesda, MD 20817  
T: (240) 694-4746  
F: (240) 694-6443  
C: (240) 274-6417  
E: scott.reimink@hmshost.com

Building Engineering Resources, Inc.  
66 Main Street  
North Easton, MA 02356  
T: (508) 230-0260  
F: (508) 230-0365  
E: ber@ber-engineering.com



LOYD ARCHITECTS  
32 Court St. Plymouth, MA 02360  
TEL: (508) 746-4646  
TEL: (508) 746-4946  
E-MAIL: info@lloydarch.com

Job #: 16414  
Scale: As noted  
Issued: 032117

PLUMBING PLANS

P200