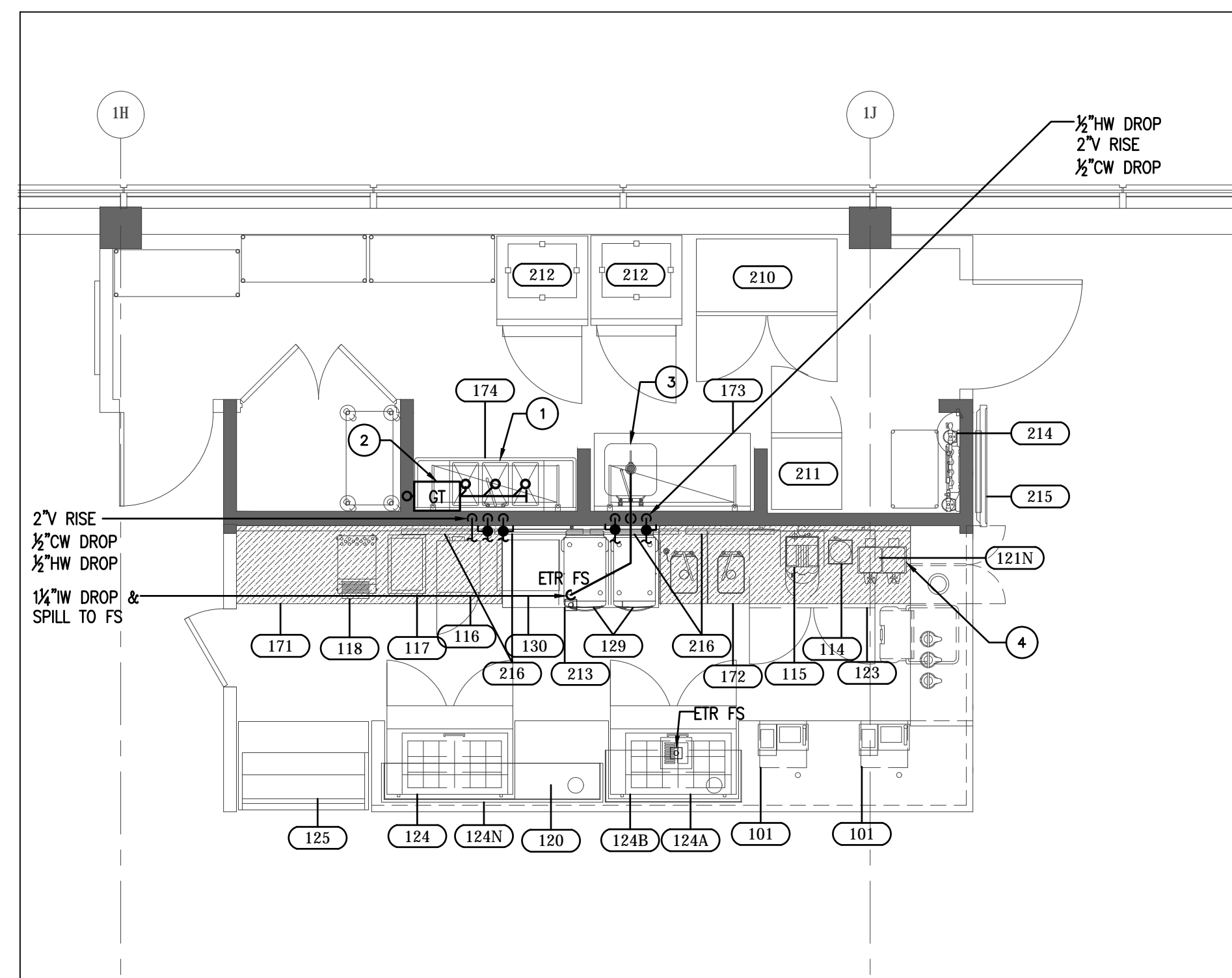


1 PLUMBING DEMO PLAN
1/4" = 1'-0"

PLUMBING DEMOLITION NOTES

- 1 REMOVE EXISTING 3 COMPARTMENT SINK AND FAUCET, HAND SINK AND FAUCET. CUT AND CAP EXISTING COLD AND HOT WATER, WASTE AND VENT PIPING.
- 2 EXISTING COFFEE BREWERS TO BE REMOVED AND REPLACED.
- 3 EXISTING FLOOR SINK AND ALL ASSOCIATED PIPING TO REMAIN



3 PLUMBING PLAN
1/4" = 1'-0"

PLUMBING KEY NOTES

- 1 NEW 3 COMPARTMENT SINK AND FAUCET WITH ALL NEW CONNECTIONS. CONNECT ALL NEW PLUMBING SERVICES TO EXISTING PLUMBING SERVICES.
- 2 PROVIDE NEW GREASE INTERCEPTOR. EXTEND NEW 2" SANITARY AND CONNECT TO EXISTING SANITARY PIPING BENEATH SLAB. EXTEND NEW VENT PIPING AND CONNECT TO EXISTING VENT PIPING. VERIFY IN FIELD EXACT LOCATION AND ROUTING OF EXISTING SANITARY SYSTEM.
- 3 NEW HAND SINK AND FAUCET WITH ALL NEW 1/2" COLD AND HOT WATER CONNECTION, NEW 1/2" W DROP AND SPILL TO FS. EXTEND COLD AND HOT WATER PIPING AND CONNECT TO EXISTING. EXTEND NEW VENT PIPING AND CONNECT TO EXISTING VENT PIPING.
- 4 NEW COFFEE BREWER WITH ALL FW CONNECTION. CONNECT TO EXISTING FILTERED WATER.

DRAWING NOTES

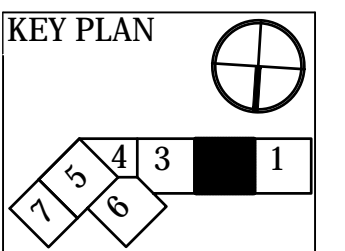
- 1. REFER TO DRAWING P100 FOR PLUMBING LEGEND AND DETAILS.
- 2. REFER TO DRAWING P300 FOR PLUMBING SPECIFICATIONS.

| EQUIPMENT SCHEDULE- FYI ONLY; REVIEW MEP DRAWINGS FOR ALL INFORMATION | | | | | | | | | | | | | | | | | | | | | | |
|---|---------|-----|--------------------|-------------------------------|--|------|------|----|-------------|-------|--------|------|-------|---|---------------------|---------------------|--------------------|--------------------|---------------------|------------------------|-----------------------|--------------------------|
| NEW EQPM | ITEM NO | QTY | MANUFACTURER | MODEL NUMBER | EQUIPMENT CATEGORY | AMPS | KW | HP | VOLTS | PHASE | DIRECT | PLUG | NEMA | Notes | ELECTRICAL AFF (IN) | COLD WATER COU (IN) | HOT WATER COU (IN) | HOT WATER AFF (IN) | HOT WATER SIZE (IN) | DIRECT DRAIN SIZE (IN) | DIRECT DRAIN AFF (IN) | INDIRECT DRAIN SIZE (IN) |
| | 101 | 2 | HMS HOST | | POS. FOOD | | | | | | | | | EXIST | | | | | | | | |
| | 110 | | NOT USED | | | | | | | | | | | | | | | | | | | |
| | 111-113 | | SPARE # | | | | | | | | | | | | | | | | | | | |
| | 114 | 1 | BLENDTEC | Q SERIES | BLENDER | 12.5 | 1.5 | | 120 | 1 | X | | 5-15P | EXIST | | | | | | | | |
| | | | BLENDTEC | | SPARE CONTAINER AND LID FOR #114 | | | | | | | | | | | | | | | | | |
| | 115 | 1 | CIMBALLI | M1 TURBOSTEAM | ESPRESSO | | 3.6 | | 208-240 | 1 | X | | | EXIST | Filtered Water | 0.375 | | | | XX | | |
| | 116 | 2 | AMANA APPLIANCES | HDC18SD2 | OVEN, MICROWAVE | 15.3 | 3.0 | | 208-240 | 1 | X | | 6-20P | EXIST | | | | | | | | |
| | 117 | 1 | APW WYOTT | CW-2A | COOKER/WARMER | 12.5 | 1.5 | | 120 | 1 | X | | 5-15P | EXIST | | | | | | | | |
| | 118 | 1 | MERCO SAVORY | RT2VSHO | TOASTER, CONVEYOR | 19.5 | | | 208 | 1 | X | | 6-30P | EXIST | | | | | | | | |
| | 119 | 1 | NOT USED | | | | | | | | | | | | | | | | | | | |
| | 120 | 1 | HATCO | GRSDH-30 - EXISTING | FOOD WARMER | 8.1 | | | 120 | 1 | X | | 5-15P | EXIST | | | | | | | | |
| | 121 | | NOT USED | | | | | | | | | | | | | | | | | | | |
| | 121N | 1 | BUNN | 1.5 GALLON BREWER | | 15 | 3.55 | | 120/208-240 | 1 | X | | | EXIST | Filtered Water | 48 | 0.375 | | | 1.5 | | |
| | 122 | | NOT USED | | | | | | | | | | | | | | | | | | | |
| | 123 | 1 | TRUE FOOD SERVICE | TUC-48 ADA | REFRIGERATOR, UNDERCOUNTER, COMPACT | 5.0 | 0.2 | | 115 | 1 | X | | 5-15P | EXIST | | 12 | | | | | | |
| | 124 | 2 | TRUE FOOD SERVICE | TSSU-48-18M-B-ST | REFRIGERATOR, SANDWICH/SALAD PREP | 7.8 | 0.33 | | 115 | 1 | X | | 5-15P | EXIST | | 12 | | | | | | |
| | 124A | 1 | CUSTOM | GAB-SANDWICH UNIT OVERSHELVES | SHELF, SANDWICH/SALAD PREP | | | | 120 | 1 | X | | | EXIST | | | | | | | | |
| | 124B | 1 | CUSTOM/Z-guard | | SNEEZE GUARD | | | | | | | | | EXIST | | | | | | | | |
| | 124N | 1 | 84" CUSTOM/Z-guard | | SNEEZE GUARD W/ LED LIGHT TAPE | | | | | | | | | REMOVE ONE OF 2 THAT EXIST | | | | | | | | |
| | 125 | 1 | QBD | CVRXX50SS2-SZ | 50" SELF SERVE REFR. (with NIGHT GATE & LOCK) | 12.0 | | | 120 | 1 | X | | 5-15P | EXIST | | | | | | | | |
| | 126N | 4 | BUNN | | Evaporator Pan | 8.4 | | | 120 | 1 | X | | 5-15P | EXIST | | | | | | | | |
| | 127 | 2 | PENDING | | AIRPOT SERVERS | | | | | | | | | | | | | | | | | |
| | 128 | 1 | ICE CADDY | CAMBRO | TRASH RECEPTACLE - by others | | | | | | | | | EXIST | | | | | | | | |
| | 129 | 2 | TURBOCHEF | SOTA | MICROWAVE CONVECTION OVEN | 30 | 6.2 | | 208-240 | 1 | X | | 6-30P | | 48 | | | | | | | |
| | 130 | 1 | HATCO GLO-RAY | GRSDH-24 | HORIZONTAL DISPLAY WARMER | 6.9 | | | 120 | 1 | X | | 5-15P | | 48 | | | | | | | |
| | 171 | 1 | ELKAY CUSTOM | STAINLESS STEEL | 102" COUNTER W/ PULL OUT SHELVES | | | | | | | | | SIM TO SHOP DRAWING (ATTACHED) | | | | | | | | |
| | 172 | 1 | CUSTOM | STAINLESS STEEL | 96" COUNTER W/ (2) SINKS (DUMP/HAND) & FAUCETS | | | | | | | | | VERIFY LENGTH PRIOR TO FABRICATION | | | | | | | | |
| | 173 | 1 | ELKAY (?) | STAINLESS STEEL | PREP SINK W/ COUNTER | | | | | | | | | LW. | | | | | | | | XX |
| | 174 | 1 | CUSTOM | STAINLESS STEEL | 62" 3-BOWL SINK W/ L & R DRAIN BOARDS & FAUCET | | | | | | | | | SIM TO SHOP DRAWING (ATTACHED); VERIFY MAX SIZE | | | | | | | | |
| | 201 | | FOCUS | (2)3 X 4 TIER, 1(2) X 4 TIER | SHELVING, WIRE | | | | | | | | | EXIST | | | | | | | | |
| | 202 | 1 | FOCUS | 18"X30" | SHELVING, WIRE | | | | | | | | | EXIST | | | | | | | | |
| | 203 | 3 | FOCUS | 18"X48" | SHELVING, WIRE | | | | | | | | | | | | | | | | | |
| | 204 | 1 | FOCUS | 18"X36" | SHELVING, WIRE | | | | | | | | | | | | | | | | | |
| | 205 | 2 | FOCUS | 14"X48"X2 | WALL SHELVING, WIRE | | | | | | | | | PROVIDE BLOCKING | | | | | | | | |
| | 210 | 1 | DELFIELD | 6051 XL-S | REFRIGERATOR, REACH-IN | 9.1 | 0.5 | | 115 | 1 | X | | 5-15P | EXIST | | 12 | | | | | | |
| | 211 | 1 | TRUE | T-23 | REFRIGERATOR, REACH-IN | 7.6 | 0.3 | | 115 | 1 | X | | 5-15P | EXIST | | 12 | | | | | | |
| | 212 | 2 | TRUE | TAIFRI | 1 EXIST, 1 NEW | 12 | | | 115 | 1 | X | | 5-15P | | 12 | | | | | | | |
| | 213 | 1 | DELFIELD | UCD4464N | UNDERCOUNTER FRIDGE W/ DRAWERS | 3.9 | 1/5 | | 115 | 1 | X | | 5-15P | | 12 | | | | | | | |
| | 214 | 1 | EVERPURE | EV9437-10 | FILTER SYSTEM, COMBINATION APPLICATIONS | | | | | | | | | EXIST | | 0.75 | 72 | | | | | |
| | 215 | 1 | MONITOR | | 50" MONITOR ON ADJUSTABLE MOUNT | | | | | | | | | EXIST | | | | | | | | |
| | 216 | 4 | LG MONITOR | 49SM5B | 49" MEDIA PLAYER W/ MOUNT | | | | 100-240 | | | | X | | | | | | | | | |

| | |
|--------|--------|
| Item | Date |
| Bid | 032117 |
| Permit | 032417 |



Great American Bagel Renovations
Portland Int'l Airport PWM
1001 Westbrook Street
Portland ME 04102



HMS Host
6965 Rockledge Drive
Bethesda, MD 20817
T: (240) 694-4746
F: (240) 694-4643
C: (240) 274-6417
E: scott.reimink@hmshost.com

Building Engineering Resources, Inc.
66 Main Street
North Easton, MA 02356
T: (508) 230-0260
F: (508) 230-0365
E: ber@ber-engineering.com



LLOYD ARCHITECTS
32 Court St., Plymouth, MA 02360
TEL: (508) 746-4976
F: (508) 746-4976
E-MAIL: info@lloydarch.com

Job #: 16414
Scale: As noted
Issued: 032117

PLUMBING PLANS

P200