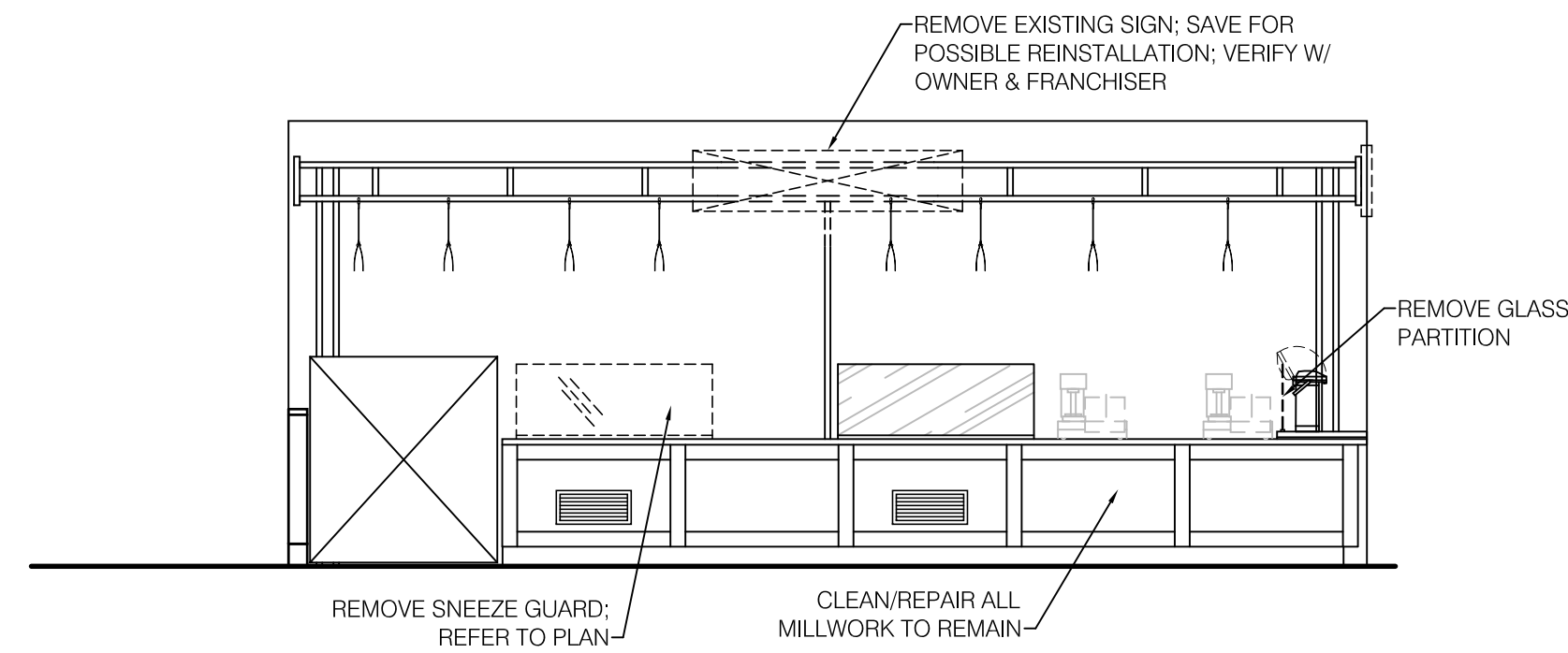
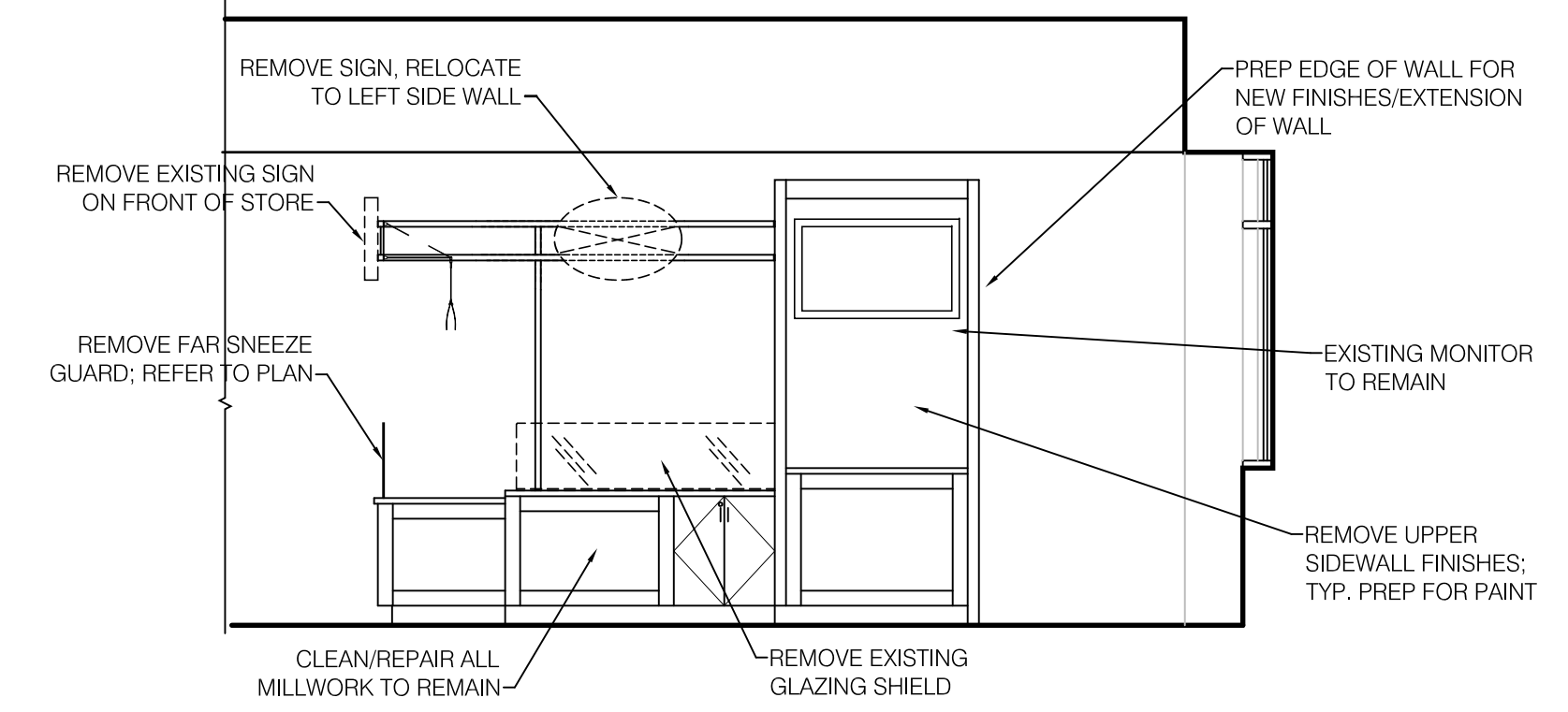


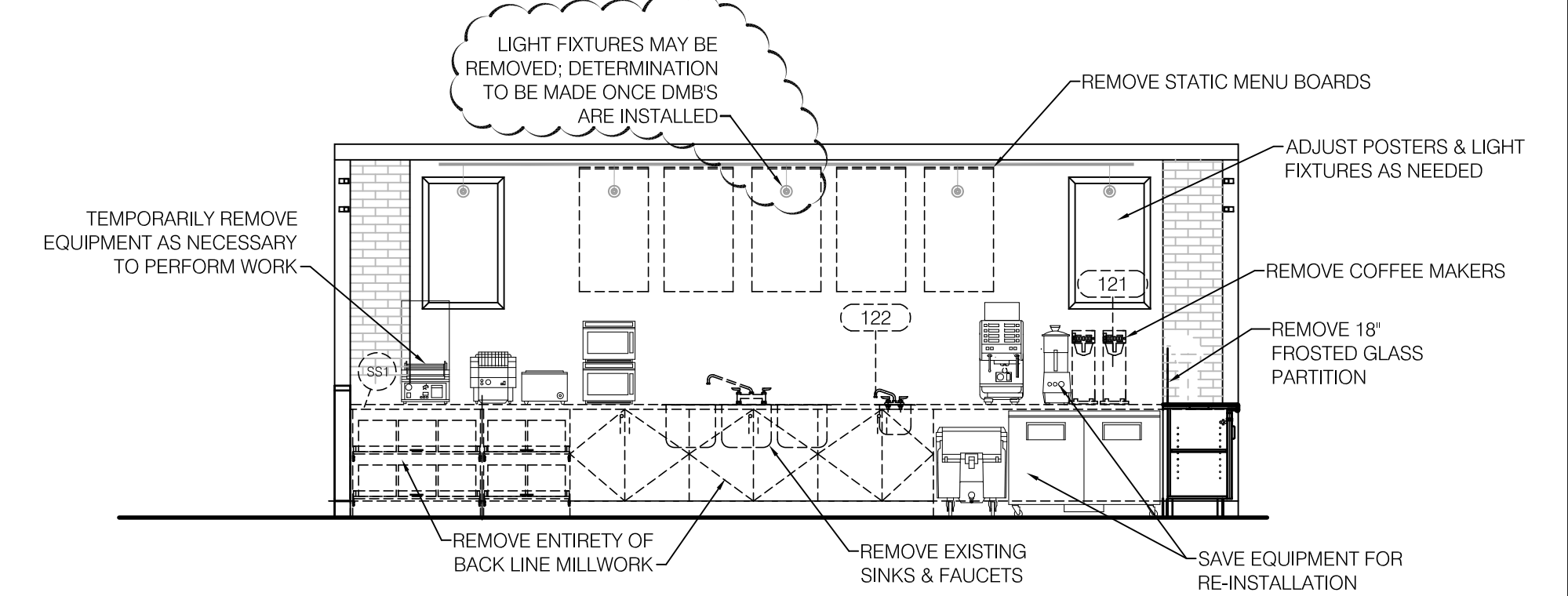
3 DEMO ELEVATION-RIGHT
1/4"=1'-0"



2 DEMO ELEVATION-FRONT
1/4"=1'-0"



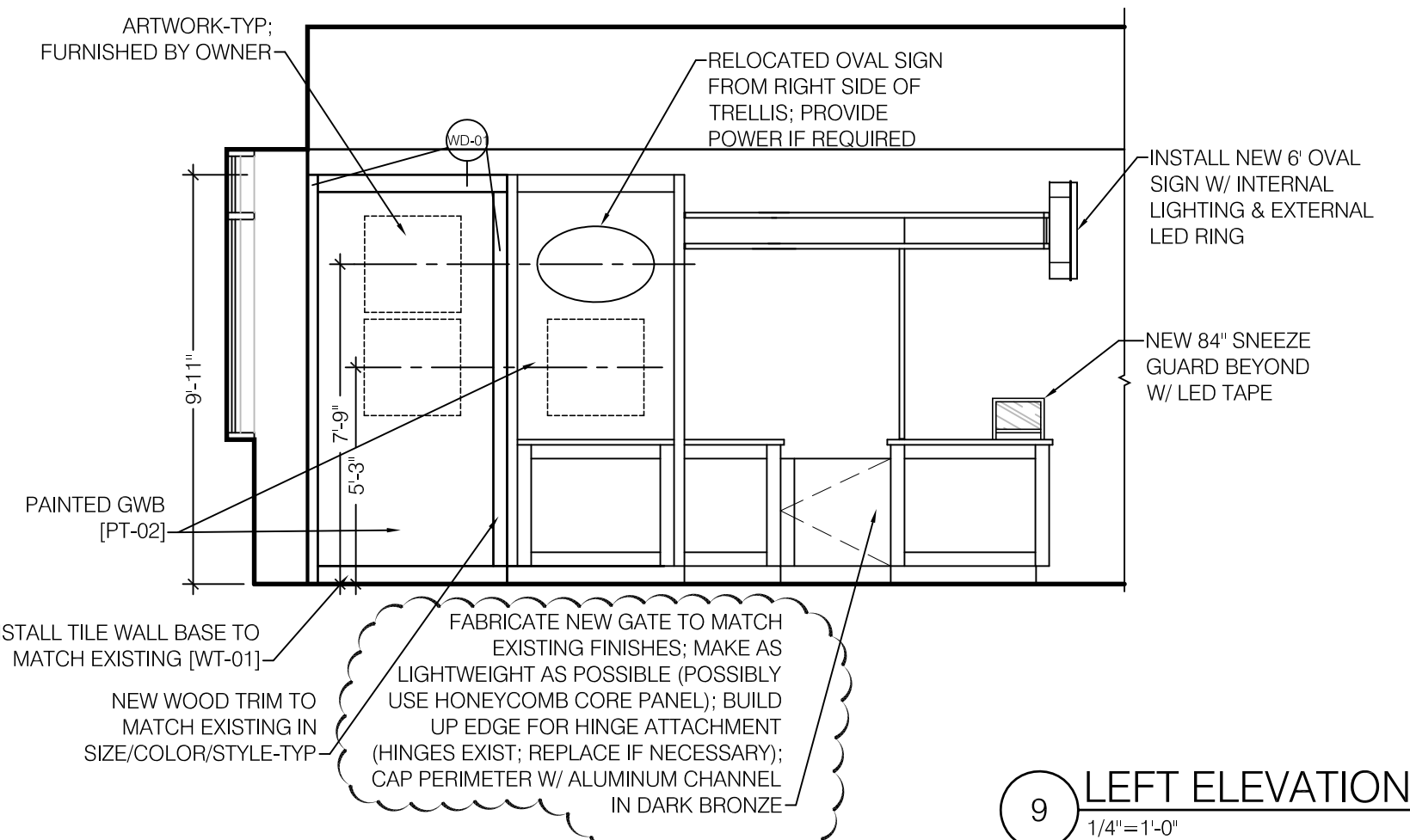
1 DEMO ELEVATION-RIGHT
1/4"=1'-0"



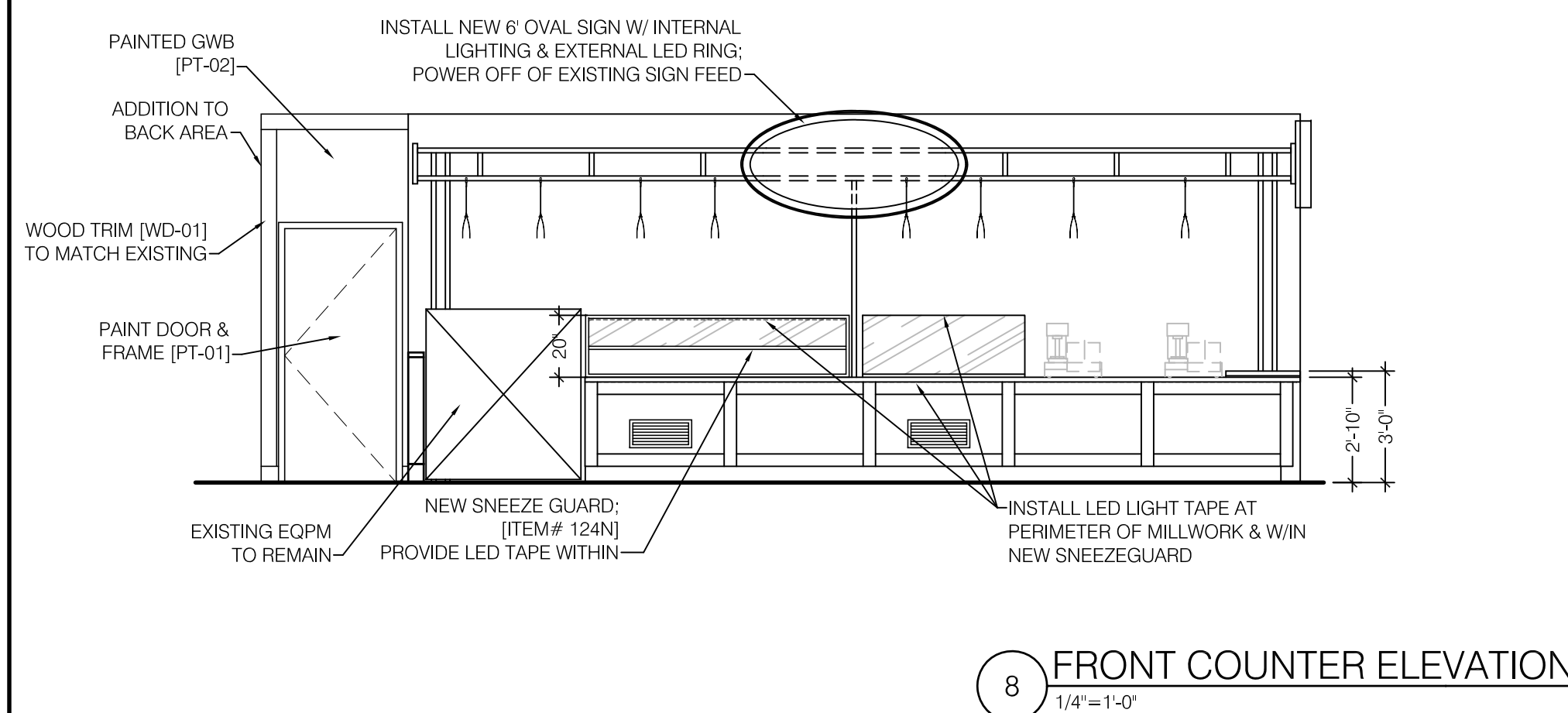
4 DEMO ELEVATION-BACK
1/4"=1'-0"

6 NOT USED
1/4"=1'-0"

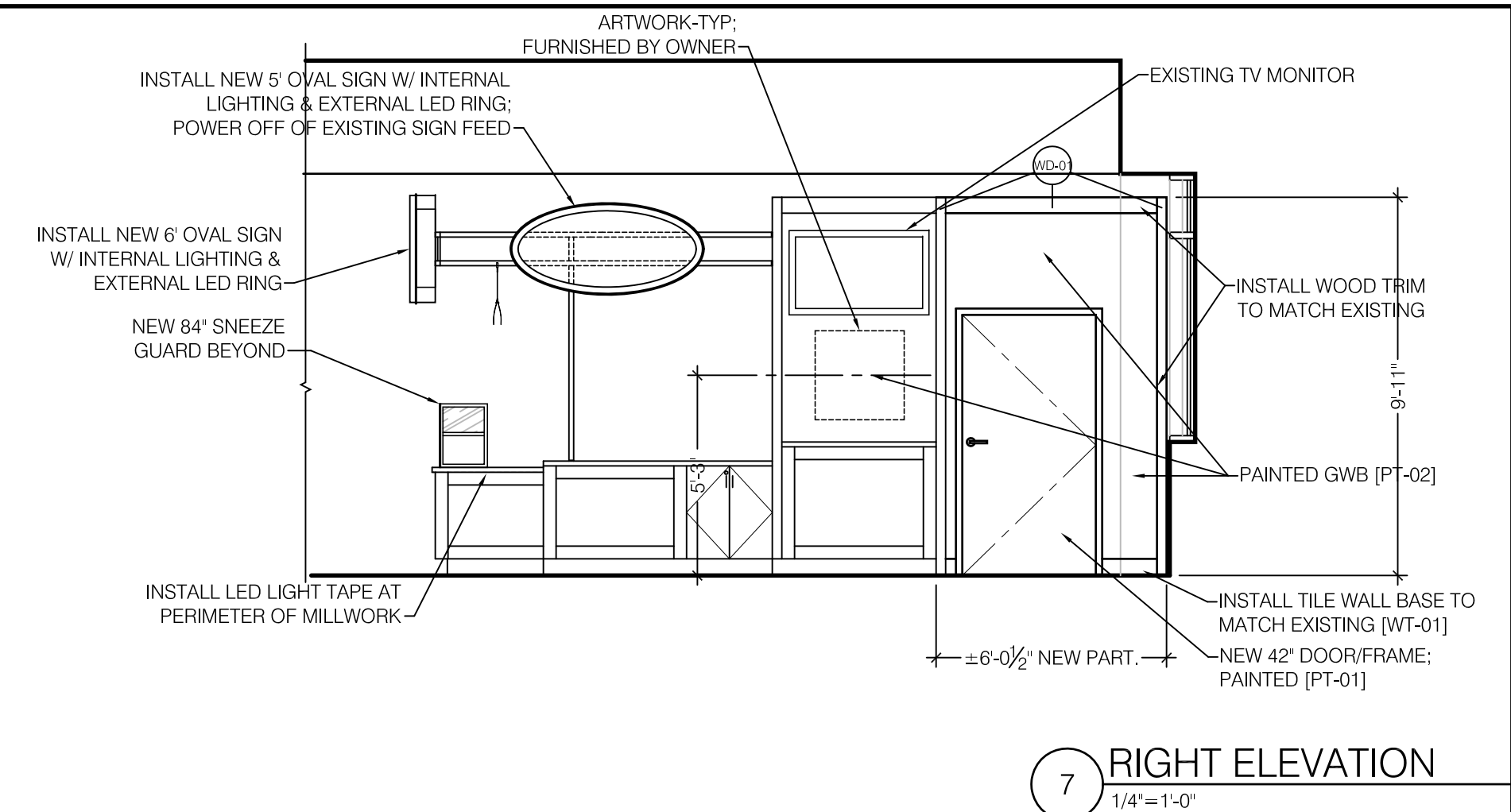
5 NOT USED
1/4"=1'-0"



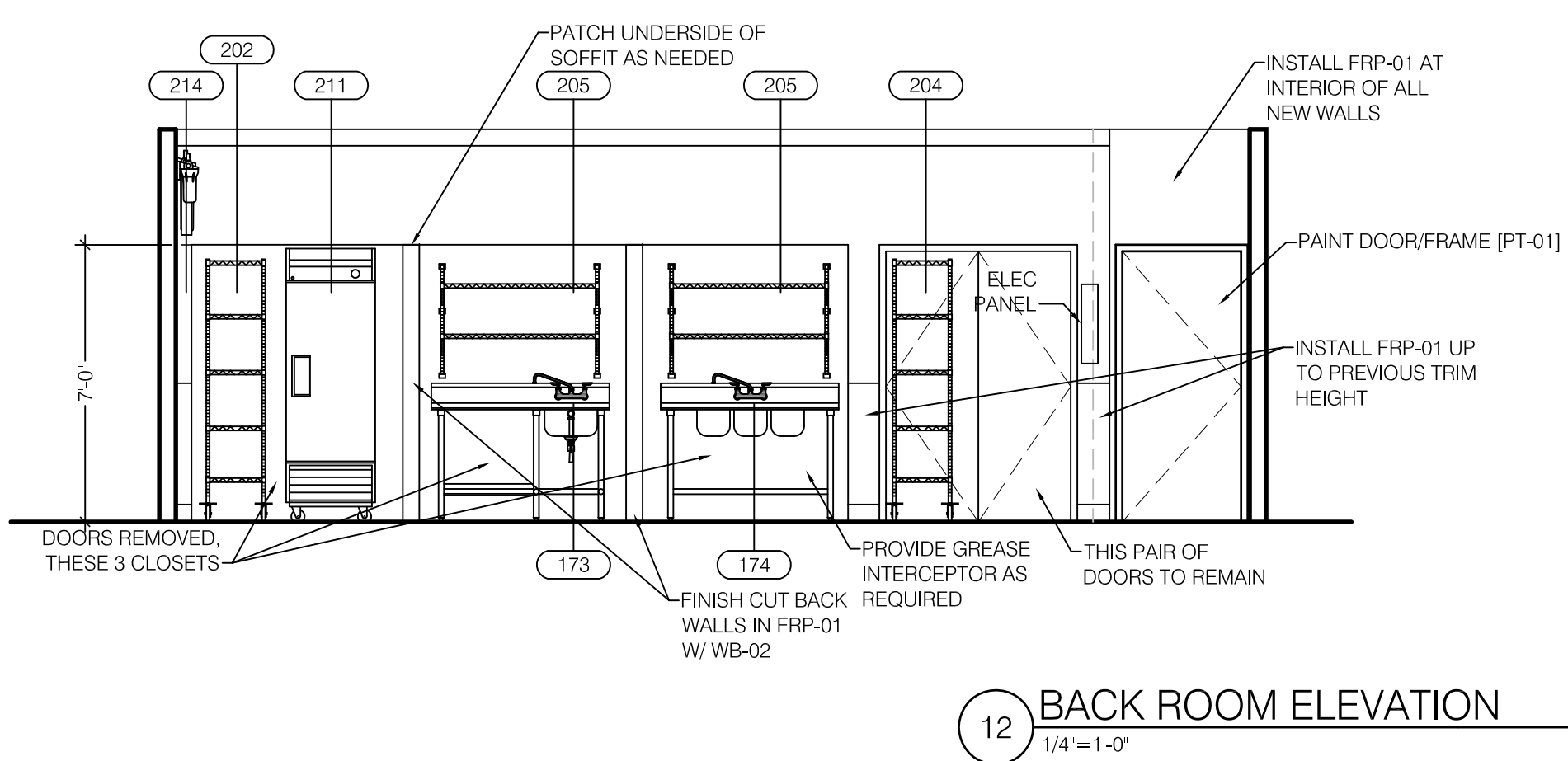
9 LEFT ELEVATION
1/4"=1'-0"



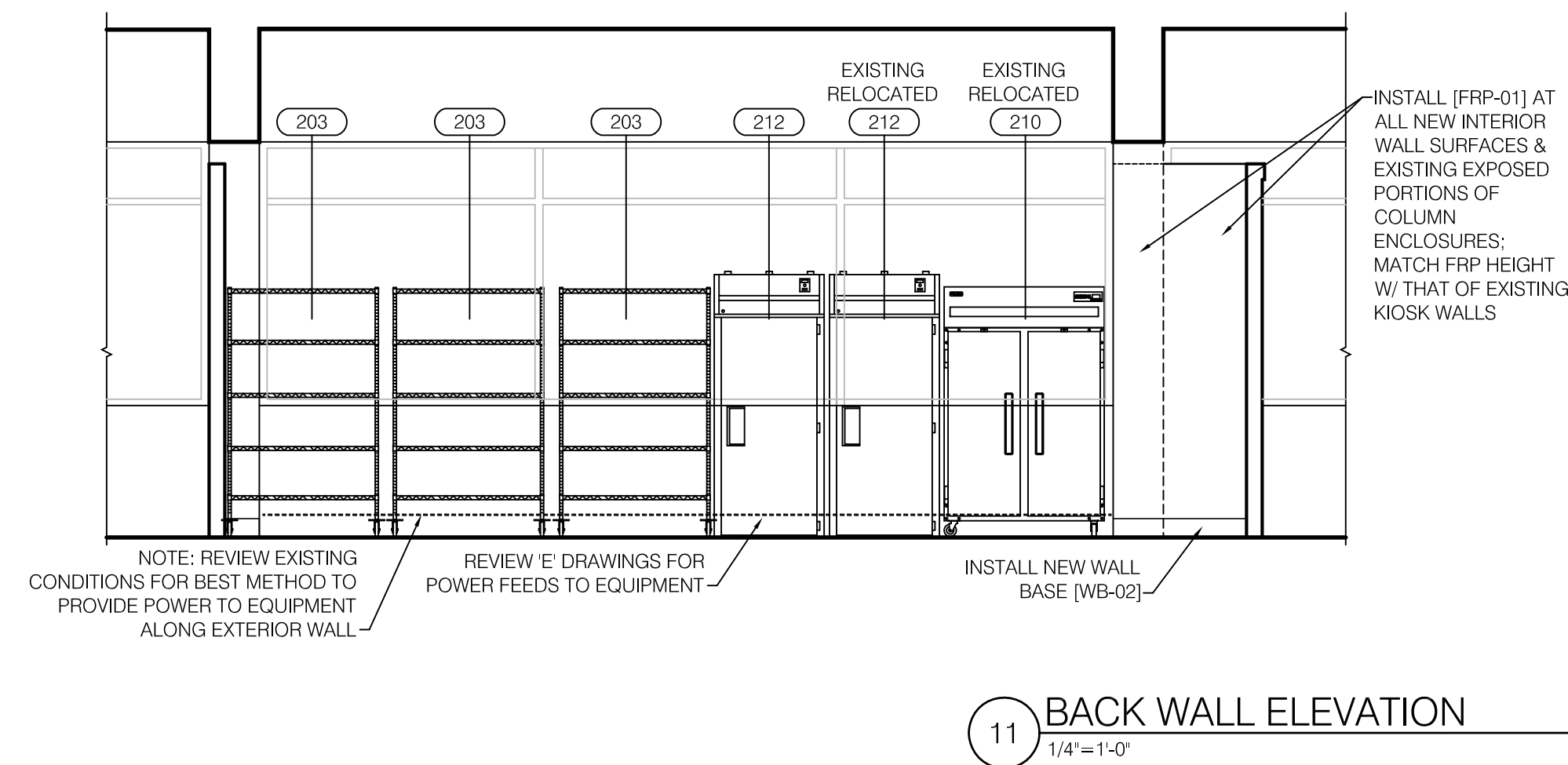
8 FRONT COUNTER ELEVATION
1/4"=1'-0"



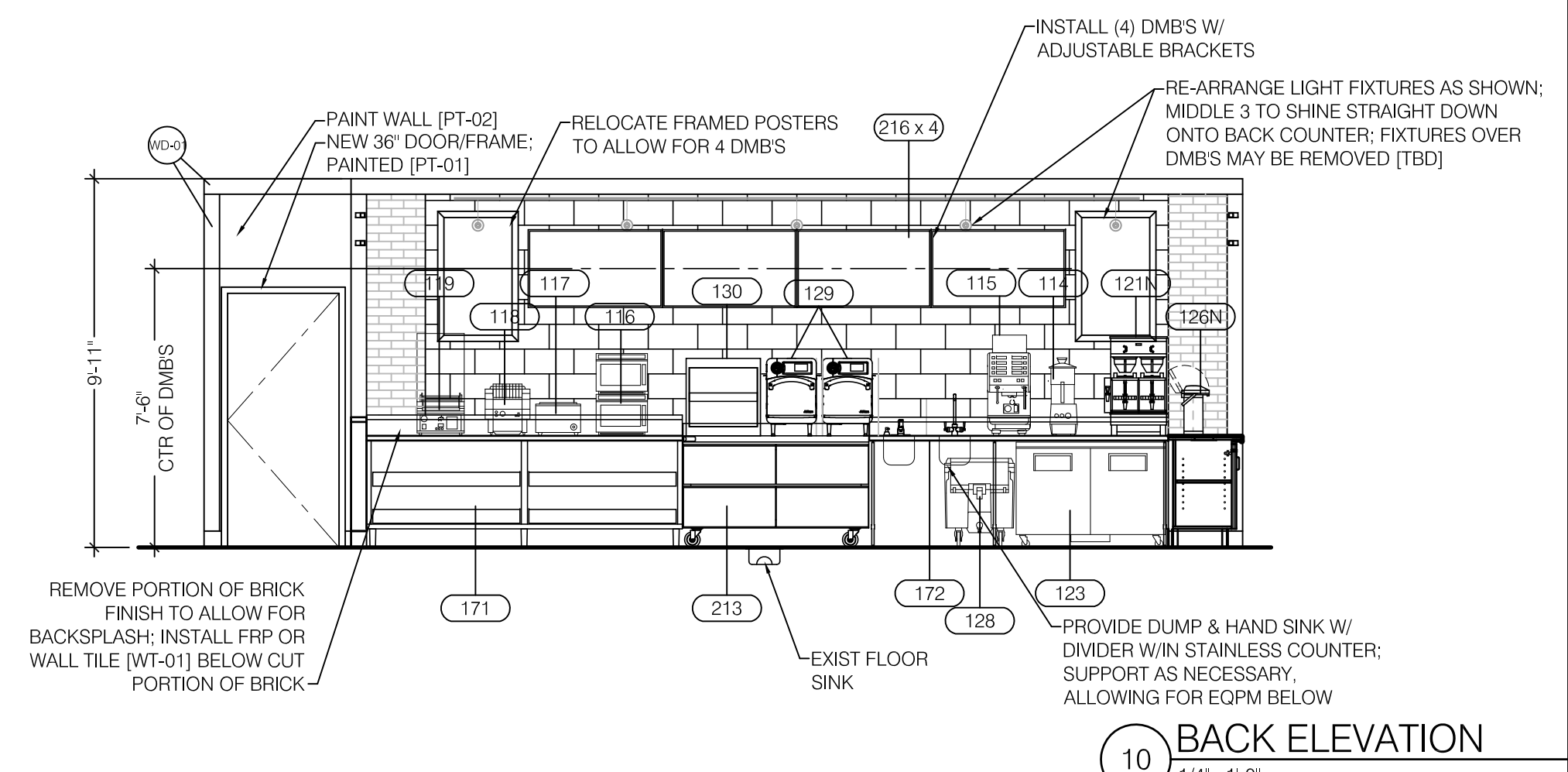
7 RIGHT ELEVATION
1/4"=1'-0"



12 BACK ROOM ELEVATION
1/4"=1'-0"



11 BACK WALL ELEVATION
1/4"=1'-0"

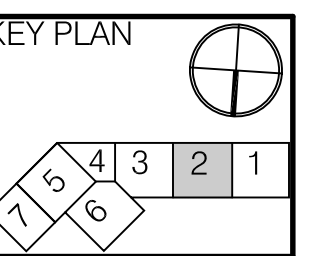


10 BACK ELEVATION
1/4"=1'-0"

Item	Date
Bid	032117
Permit	032417



Great American Bagel Renovations
Portland Int'l Jetport P100
1001 Westbrook Street
Portland ME 04102



HMS Host
6905 Rockledge Drive
Bethesda, MD 20817
T: (240) 694-4746
F: (240) 694-4643
C: (240) 274-6417
E: scott.reimink@hmshost.com

Building Engineering Resources, Inc.
66 Main Street
North Easton, MA 02556
T: (508) 230-0260
F: (508) 234-0265
E: ber@ber-engineering.com



LLOYD ARCHITECTS
32 Court St. Plymouth, MA 02360
TEL: (508) 746-4636
FAX: (508) 746-1236
E-MAIL: info@lloydarch.com

Job #: 16414
Scale: As noted
Issued: 032117

DEMOLITION & CONSTRUCTION ELEVATIONS

A200