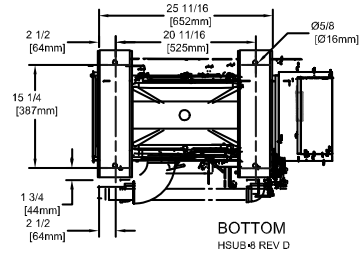
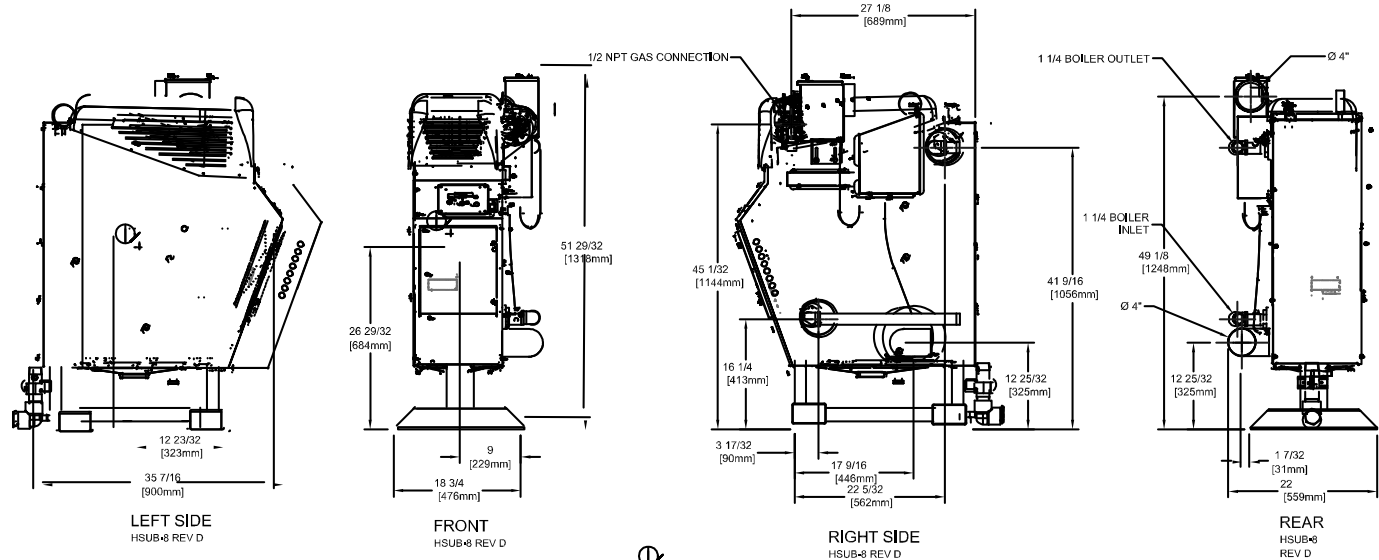


CODE OPTIONS

CSD-1	STANDARD
-------	----------

NOTE: Dimensions are approximate and should not be used to "rough-in" equipment.



REP FIRM _____

SUBMITTED BY _____

JOB NAME _____

ARCHITECT _____

ENGINEER _____

CONTRACTOR _____

DATE _____

KN-4

Category II or Category IV Appliance
(see Installation and Operation Manual for venting information)

HydroTherm
A Division of Mestek, Inc.
Westfield, MA 01085
(413) 564-5515

A.G.A. CERTIFIED RATINGS & CAPACITIES

Fuel Type	Natural Gas / Propane	Boiler FLA	5 AMPS
Input BTU/hr.	399 MBH/ 117 KW	Min. Gas Pressure Required	2" W.C.
Output BTU/hr.	369 MBH/ 108 KW	Max. Gas Pressure Allowed	14" W.C.
Boiler HP	11.0	Water Volume	5.6 gal.
Electrical Requirements	120VAC/ 60 Hz/ 1PH	Operating Weight	827 lbs. / 375 kg.

BOILER TRIM & CONTROLS

Main Gas Valve	Dungs GB-WND	Air Switch	Cleveland Control NS-2
Ignition Control	Fenwal 35-60	Blower Motor	Ametek
Operating Control	HeatNet™	Relief Valve	30, 50, 75 & 100 PSI
High Limit	P-SW-1300-4-X		

TEMPERATURE RISE / PRESSURE DROP (Based on Full Input)

20° F / 11.1° C			40° F / 22.2° C			60° F / 33.3° C			80° F / 44.4° C			100° F / 55.5° C			
Flow Rate	Pressure	Drop	Flow Rate	Pressure	Drop	Flow Rate	Pressure	Drop	Flow Rate	Pressure	Drop	Flow Rate	Pressure	Drop	
GPM	L/s	Ft	kPa	GPM	L/s	Ft	kPa	GPM	L/s	Ft	kPa	GPM	L/s	Ft	kPa
38.0	2.39	1.54	4.54	18.5	1.16	.38	1.12	12.3	.77	.16	.47	9.25	.58	.092	.27

Flow

Flow GPM		Temp. Rise (°F)		Vent Length (Equiv. Ft.)		Air Inlet Length (Equiv. Ft.)	
Min	Max	Min	Max	Min	Max	Min	Max
7.2	72	20	100	6	100	0	100

** Min/ Max delta t reflects boiler operation at full input. For applications requiring operation above/ below these parameters please consult factory.

A. S. M. E.

ASME Sect IV Fire Side Htg Surface	22.83 Sq. Ft. / 2.12 Sq. M.	Design Data	100 PSI & 250° F
ASME Sect IV Water Side Htg Surface	9.68 Sq. Ft. / .90 Sq. M.		
CV. GPM (1PSID)	40		

UNBALANCED FLUE LIMITATIONS

Negative Flue Pressure	-0.2" W.C.
Positive Flue Pressure	0.25" W.C.

KN-4