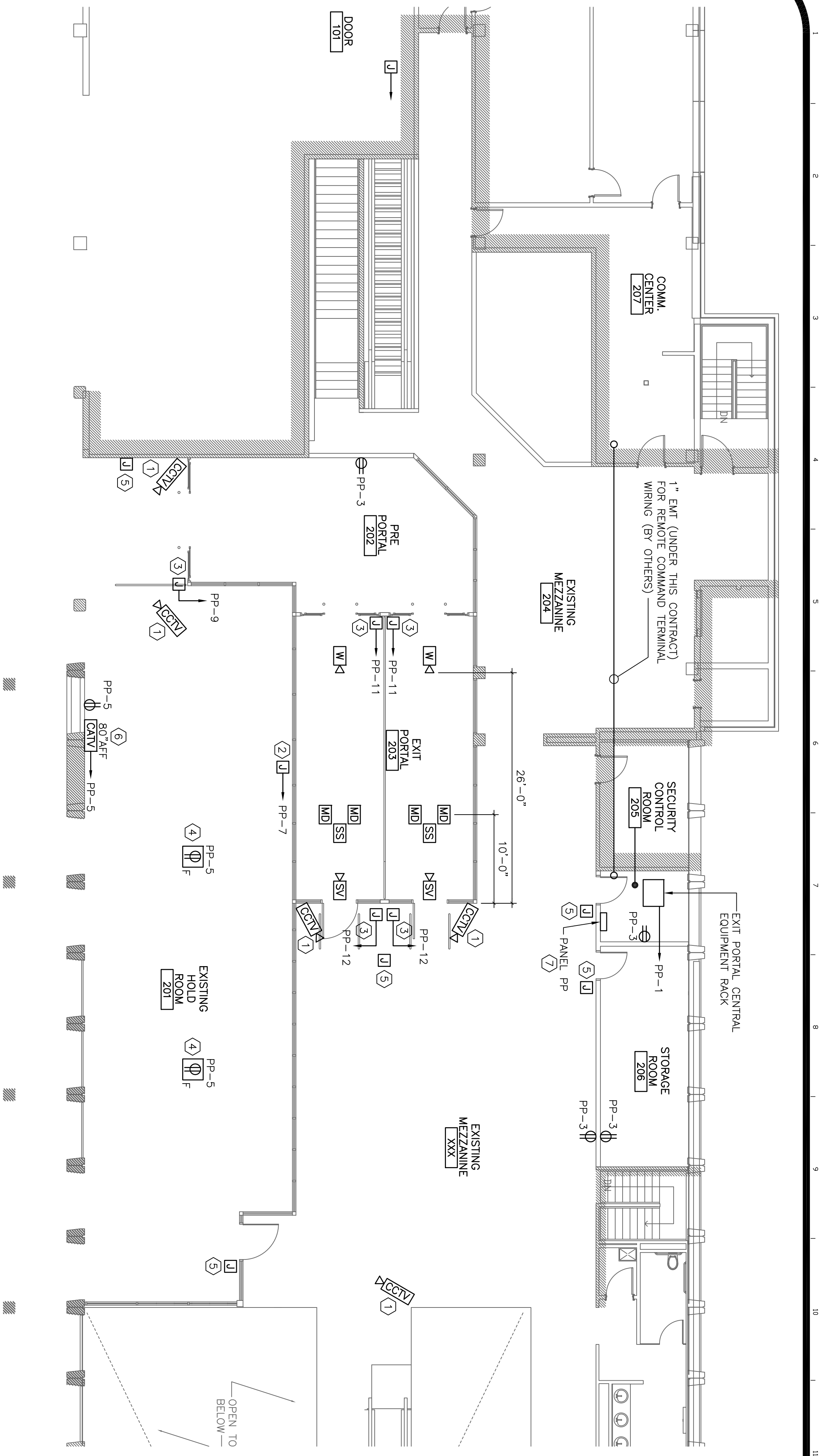
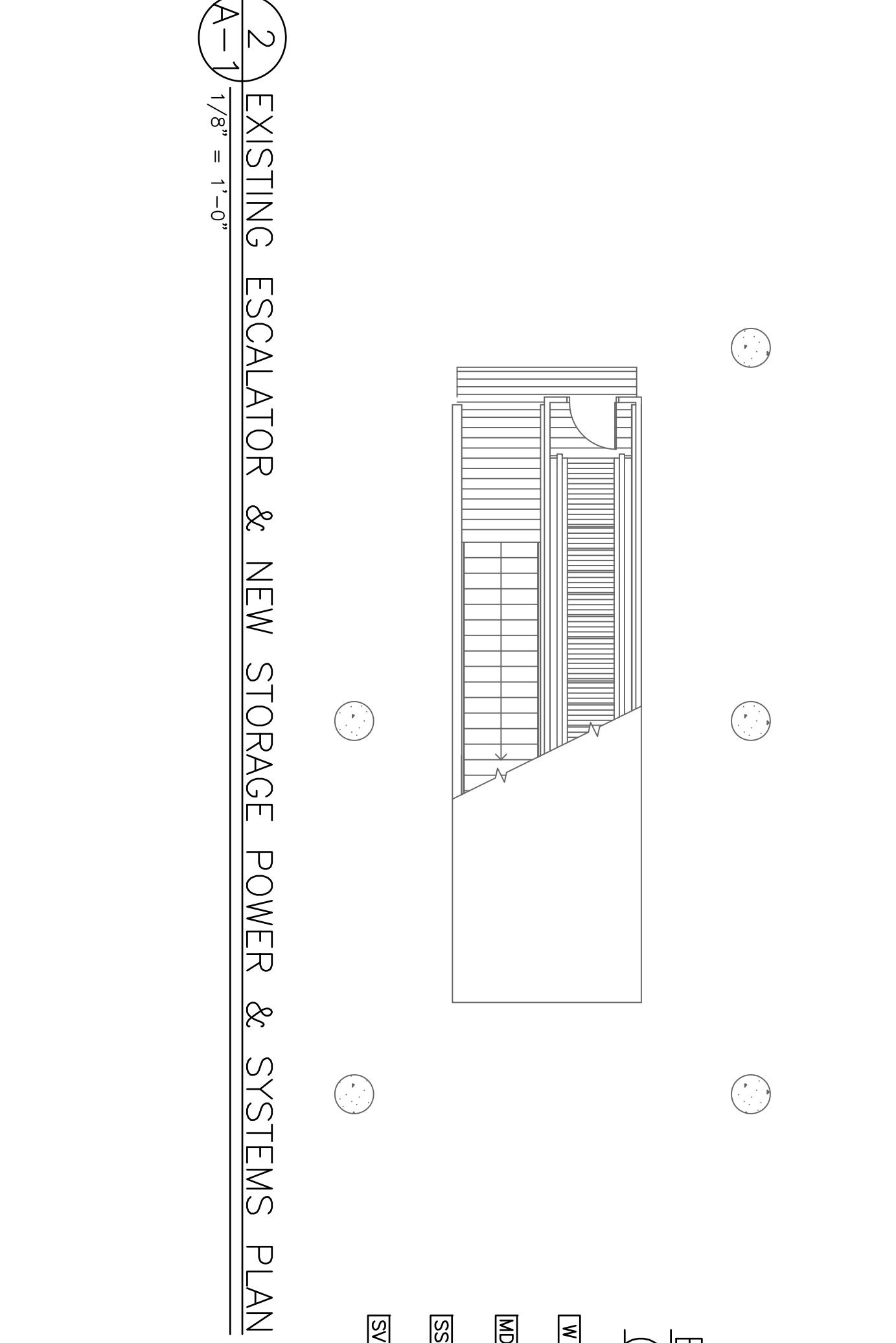


General Notes  
**ISSUED FOR CONSTRUCTION**  
 11/5/2012



**1 SECOND FLOOR ELECTRICAL POWER & SYSTEMS PLAN: EXIT PORTAL**  
 A-1 1/8" = 1'-0"

DIRECTORY	KVA LOAD				#	BKR	AMPS	PHASE	KVA LOAD				DIRECTORY
	A	B	C	Σ					A	B	C	Σ	
EXIT PORTAL - CENTRAL EQUIPMENT RACK	1.0			1	20	A	20	2	*				SPACE
TEL. RECEPT./AIR. BONES	0.8			3	20	B	20	4	*				SPACE
BACK-LIT MURAL	0.6			5	20	A	20	6	*				SPACE
PANEL PORTAL DOOR OPENERS	0.7			9	20	B	20	10	*				SPACE
EXIT PORTAL DOOR OPENERS				11	20	C	20	12	*				EXIT PORTAL DOOR OPENERS
SPACE	*			13		A		14	*				SPACE
SPACE	*			15		B		16	*				SPACE
SPACE	*			17		C		18	*				SPACE
SPACE	*			19		A		20	*				SPACE
SPACE	*			21		B		22	*				SPACE
SPACE	*			23		C		24	*				SPACE
SPACE	*			25		A		26	*				SPACE
SPACE	*			27		B		28	*				SPACE
SPACE	*			29		C		30	*				SPACE
<b>SUBTOTAL</b>	1.6	1.3	1.4					0.0	0.0	0.7			<b>SUBTOTAL</b>
VOLTAGE: 208Y/120V	PHASE: 3				POLES: 4				TOTAL KVA A-PHASE: 1.6				
MAIN BREAKER: 100A					BUS AMPS: 100A				TOTAL KVA B-PHASE: 1.5				
MOUNTING: SURFACE									TOTAL KVA C-PHASE: 2.3				
SHORT CIRCUIT RATING: 10 KMAC									TOTAL KVA: 5.4				



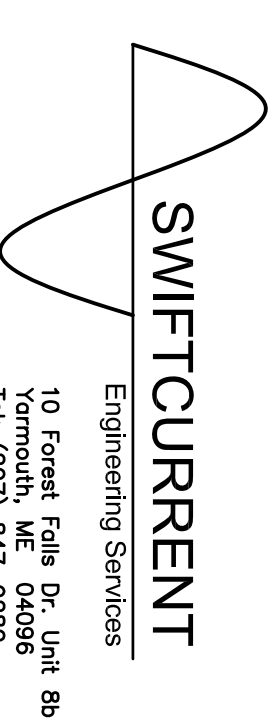
**2 EXISTING ESCALATOR & NEW STORAGE POWER & SYSTEMS PLAN**  
 A-1 1/8" = 1'-0"

**SHEET NOTES:**  
 1. SEE SHEET E-0 FOR LEGEND, ABBREVIATIONS & GENERAL NOTES.  
 2. REMOVE ALL WALL AND CEILING MOUNTED DEVICES, LIGHT FIXTURES, CONDUITS AND WIRING FROM AREAS WHERE WALLS AND CEILING ARE BEING REMOVED OR RE-CEILING. CHECK FOR ANY OTHER SYSTEMS THAT MAY BE INTERRUPTED BY THE REMOVAL OF EQUIPMENT. SHALL BE FURNISHED AS REQUIRED BY THIS CONTRACTOR. CONTINUOUS FROM DEVICE TO DEVICE (NO SPLICING WILL BE ALLOWED).

**KEYED NOTES:**  
 ① CCTV CAMERA. FURNISH CCTV CAMERA COORDINATE WITH EXISTING SYSTEM CAMERA SHALL BE AS MANUFACTURED BY AMERICAN DYNAMICS. DISCOVER INDOOR MINI DOME MODEL # ADCEH03090CK. PROVIDE WIRING FROM CAMERA IN EXIT CONDUIT BACK TO EXISTING CCTV SYSTEM IN COMM. CENTER. FURNISH CEILING MOUNTED DOME ENCLOSURE.  
 ② POWER FOR BACKLIT MURAL. MOUNT JUNCTION BOX IN CEILING AND CONNECT TO EQUIPMENT/FIXTURES FURNISHED BY OTHERS.  
 ③ AUTOMATIC DOOR OPENER POWER. FURNISH POWER TO CONTROL/POWER SUPPLY IN EXIT CONNECTION TO DOOR/EYE BY OTHERS.  
 ④ FLOOR BOX (CONCRETE POKE-THROUGH TYPE) TO BE LOCATED IN FIELD. BOX SHALL BE AS MANUFACTURED BY WIREMOLD, MODEL EVOLUTION 6&11 W/ TAMPER RESISTANT QUAD RECEPTACLE. FURNISH WITH SURFACE STYLE COVER ASSEMBLY, COORDINATE COLOR WITH ARCHITECT. NEW HOLE TO BE CORE DRILLED IN FLOOR TO BE FURNISHED UNDER THIS CONTRACTOR.  
 ⑤ INSTALL 2"x4" WORK BOX RECESSED IN DRY WALL OR SURFACE MOUNTED AT DOOR FRAME FOR CARD READER. FURNISH EXIT CONDUIT TO COMM CENTER 207. MOUNT 42" AFF TO CENTER OF BOX.  
 ⑥ CATV JACK: FURNISH BOX, JACK, COVERPLATE AND WIRING FOR CATV JACK. CATV WIRING SHALL BE RUN IN EXIT CONDUIT FROM AN ELECTRICAL ROOM LOCATED ON THE GROUND BELOW THE SECURITY CONTROL ROOM.  
 ⑦ PANEL PP TO BE FED FROM PANEL EMP1 IN FIRST FLOOR ELECTRICAL ROOM. USE SPARE 100A, 3P BREAKER TO BE FED FROM NEW PANEL VIA 4#2WIG & #6 GND. 1'-1/4" C.

**EQUIPMENT KEY:**  
**(EQUIPMENT INSTALLED BY OTHERS)**  
 WC WATERHOSE COLOR CAMERA  
 MD MOTION DETECTOR  
 SS SPEAKER/STROBE  
 DC DETECTOR CAMERA

NOTE: CONDUIT, WIRE AND DEVICES TO BE FURNISHED BY OTHERS FOR THESE DEVICES ONLY. DEFINITION ON PURPOSES ONLY.



10 Forest Ridge Dr., Unit 8b  
 Portland, ME 04102  
 Tel: (207) 847-9280

No.	Revision/Issue	Date

**PDI**  
 Facilities & Engineering  
 1001 Westbrook St  
 Portland, ME 04102  
 207-874-8877

Project Name and Address  
**SECURE EXIT PORTAL AND ASSOCIATED RENOVATIONS**

Sheet Title  
**SECOND FLOOR ELECTRICAL POWER & SYSTEMS PLAN: EXIT PORTAL**

Project Number: 12-102  
 Drawn For Construction: 11/9/2012  
 Scale: Reference Mechanical Drawings  
**E-1**