

City of Portland, Maine - Building or Use Permit Application 389 Congress Street, 04101, Tel: (207) 874-8703, FAX: 874-8716

Location of Construction: 1901 Westbrook St		Owner: City of Portland		Phone:		Permit No: 971296	
Owner Address:		Lessee/Buyer's Name: Portland International Jetport		Phone:		BusinessName:	
Contractor Name: Neckkraft Signs		Address: 686 Main St Lewiston, ME 04240		Phone: 782-9654		<div style="border: 2px solid black; padding: 5px; text-align: center;"> PERMIT ISSUED Permit Issued: DEC - 9 1997 CITY OF PORTLAND </div>	
Past Use: Jetport		Proposed Use: Same		COST OF WORK: \$			
Proposed Project Description: Erect Signage - 22 Signs - 838 Sq Ft		FIRE DEPT. <input type="checkbox"/> Approved <input type="checkbox"/> Denied Signature: _____		INSPECTION: Use Group: Type:		Zone: CBL: 199-A-001	
				PEDESTRIAN ACTIVITIES DISTRICT (P.A.D.) Action: Approved <input type="checkbox"/> Approved with Conditions: <input type="checkbox"/> Denied <input type="checkbox"/> Signature: _____ Date: _____		Zoning Approval: Special Zone or Reviews: <input type="checkbox"/> Shoreland <input type="checkbox"/> Wetland <input type="checkbox"/> Flood Zone <input type="checkbox"/> Subdivision <input type="checkbox"/> Site Plan maj <input type="checkbox"/> minor <input type="checkbox"/> mm <input type="checkbox"/>	
Permit Taken By: Mary Gresik		Date Applied For: 05 November 1997				Zoning Appeal <input type="checkbox"/> Variance <input type="checkbox"/> Miscellaneous <input type="checkbox"/> Conditional Use <input type="checkbox"/> Interpretation <input type="checkbox"/> Approved <input type="checkbox"/> Denied	

1. This permit application does not preclude the Applicant(s) from meeting applicable State and Federal rules.
2. Building permits do not include plumbing, septic or electrical work.
3. Building permits are void if work is not started within six (6) months of the date of issuance. False information may invalidate a building permit and stop all work..

CERTIFICATION

I hereby certify that I am the owner of record of the named property, or that the proposed work is authorized by the owner of record and that I have been authorized by the owner to make this application as his authorized agent and I agree to conform to all applicable laws of this jurisdiction. In addition, if a permit for work described in the application is issued, I certify that the code official's authorized representative shall have the authority to enter all areas covered by such permit at any reasonable hour to enforce the provisions of the code(s) applicable to such permit

Paul Lessard

05 November 1997

SIGNATURE OF APPLICANT Paul Lessard ADDRESS: DATE: PHONE:

RESPONSIBLE PERSON IN CHARGE OF WORK, TITLE PHONE:
 White-Permit Desk Green-Assessor's Canary-D.P.W. Pink-Public File Ivory Card-Inspector

CEO DISTRICT 4



Neokraft

Neokraft Signs Inc.
 680 Main Street
 Lewiston, Maine 04240
 Telephone: 207.782.9654
 Facsimile: 207.782.0009
 1.800.339.2258
 http://www.neokraft.com

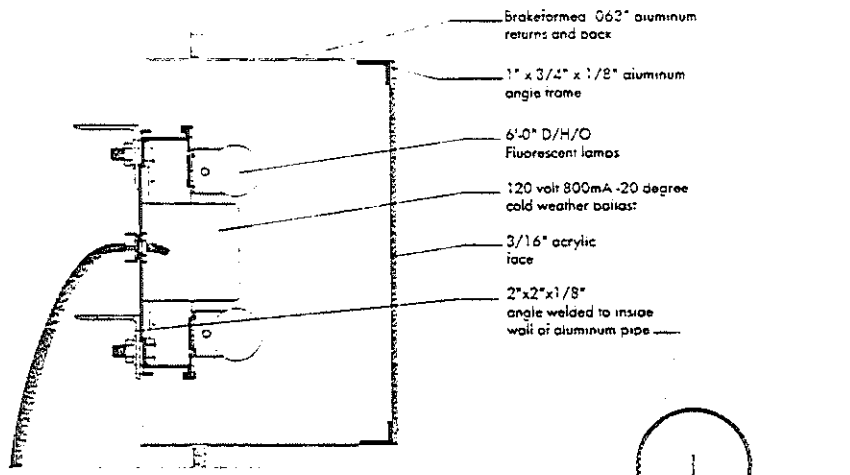
Custom Sign Fabrication

All ideas, plans or arrangements indicated on this drawing are copyrighted and owned by Neokraft Signs Inc. and shall not be reproduced, used by or disclosed to any person, firm or corporation without written permission of Neokraft Signs Inc.

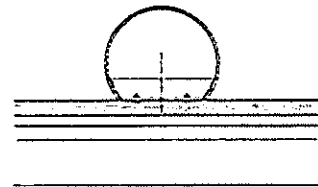
Engineering Drawing

97NK3192
 Portland
 International Jetport

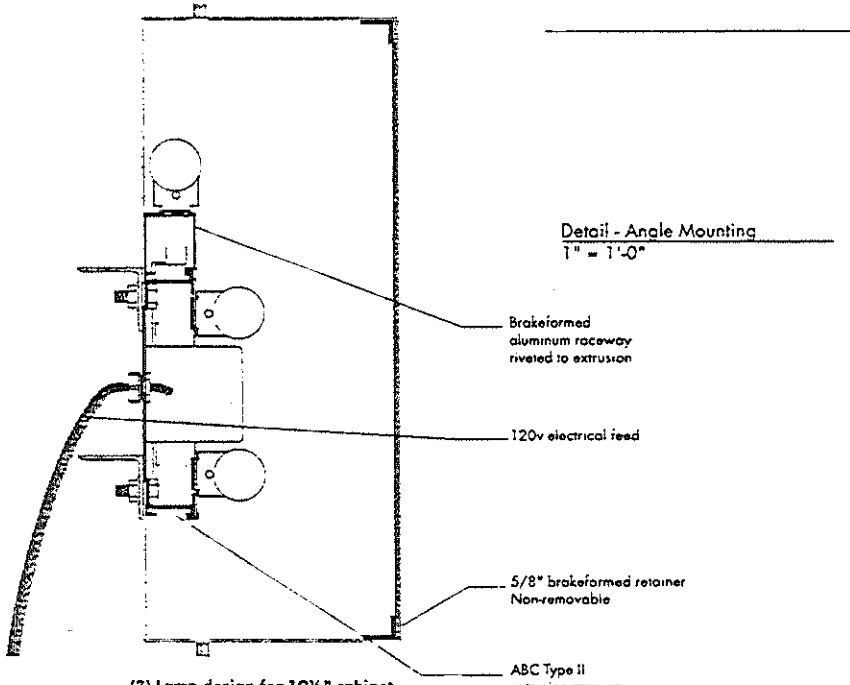
Location:	Portland, ME
Date:	8-21-97
Drawing No.:	7 of 9
Drawn by:	J. Fogg
Revised:	
Gen. Ref.:	



(2) Lamp design for 9" and 12" cabinet

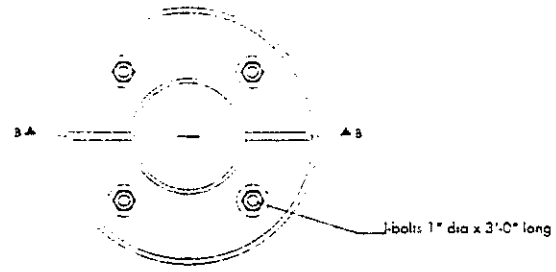


Detail - Angle Mounting
 1" = 1'-0"

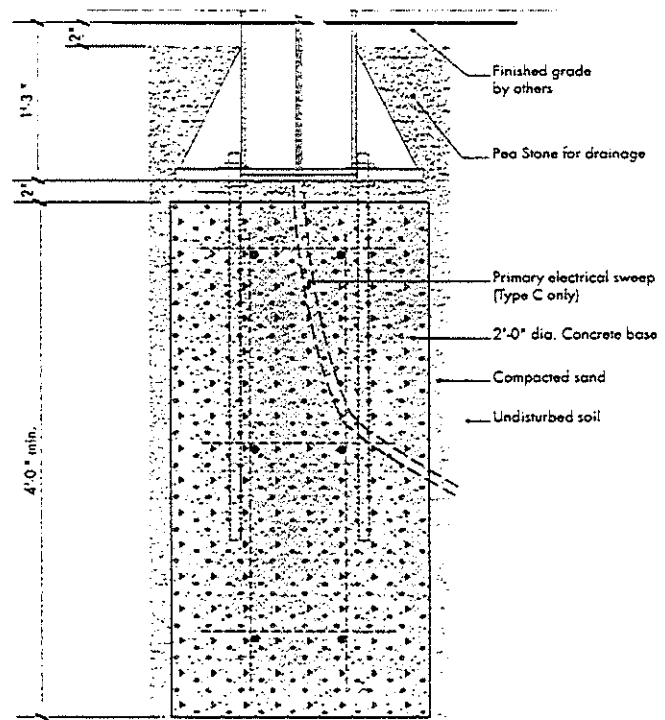


(3) Lamp design for 19 1/2" cabinet

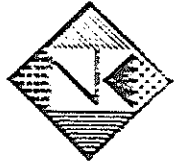
Section A-A for Sign Type C
 3" = 1'-0"



Base Plate Detail (Plan View) for Sign Types B and C
 1 1/2" = 1'-0"



Section B-B for Sign Types C - Type B Similar except with no electrical
 1" = 1'-0"



Neokraft

Neokraft Signs Inc.
686 Main Street
Lewiston, Maine 04240
Telephone: 207.782.9554
Facsimile: 207.782.0009
1.800.339.2258
<http://www.neokraft.com>

Custom Sign Fabrication

All ideas, plans or arrangements indicated on this drawing are copyrighted and owned by Neokraft Signs Inc. and shall not be reproduced, used by or disclosed to any person, firm or corporation without written permission of Neokraft Signs Inc.

Engineering Drawing

97NK3192
Portland
International Jetport

Location: Portland, ME

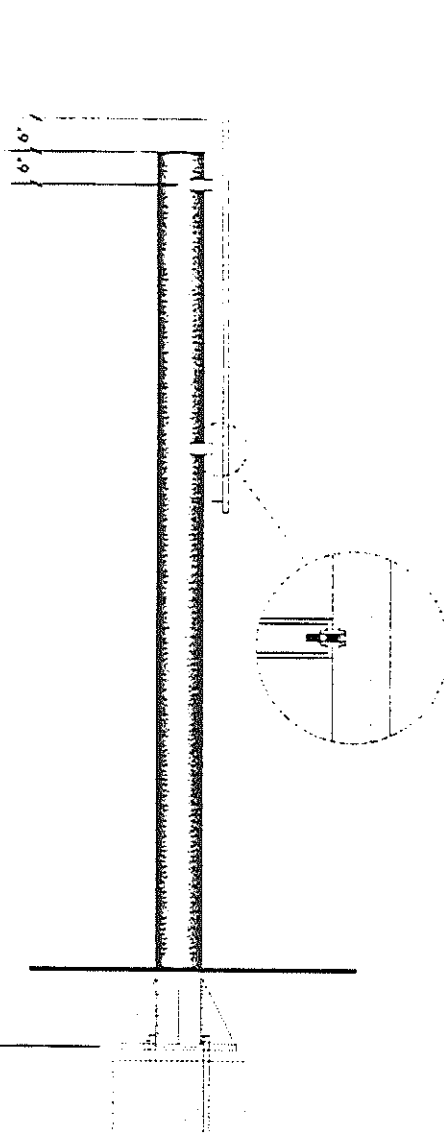
Date: 8-21-97

Drawing No.: 8 of 9

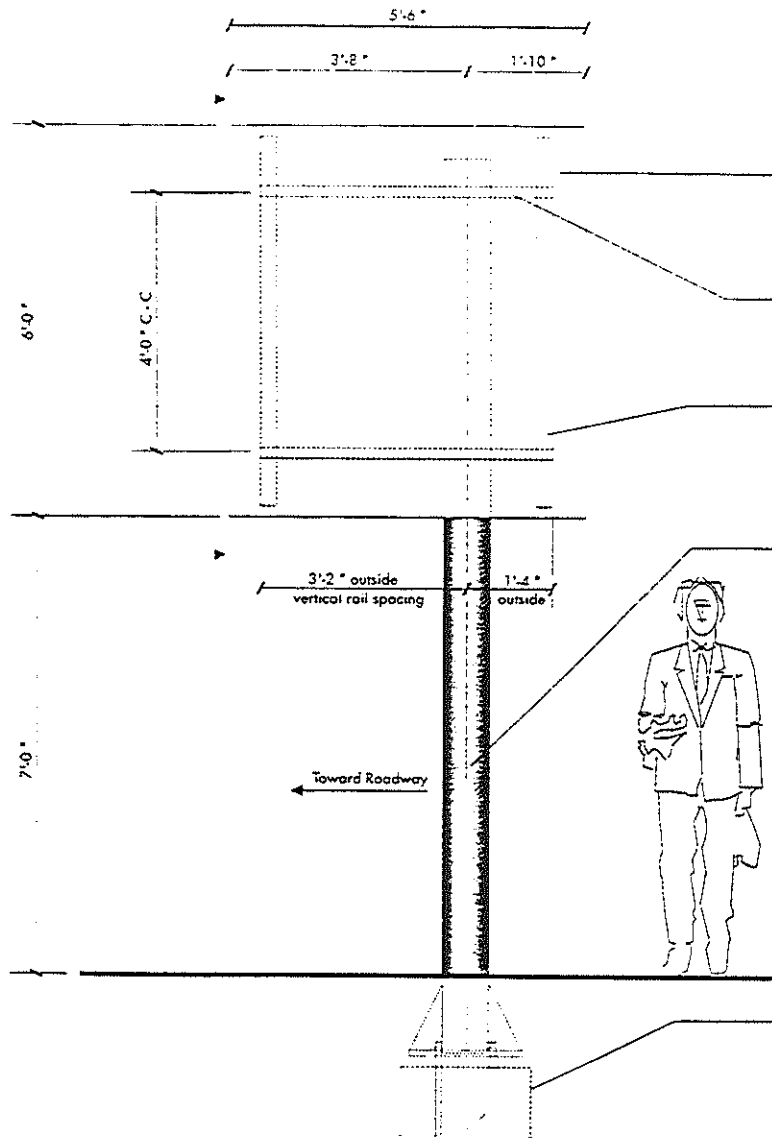
Drawn by: J. Foga

Revised

Gen Ref.



End View



Painted honeycomb sign panel with reflective vinyl copy (see copy layouts and color details, pages 14 and 16). Provide painted modified "H" extrusion along all edges, and continuous extrusion at all panel joints. See page 13 for panel detail.

2" x 4" x .250" painted horizontal aluminum square tube arm; let-into vertical column 1 1/2"; full penetration weld. Provide end caps; weld, grind, fill and primer prior to final color coat.

3" x 2 11/16" aluminum vertical Z-Bar support; mechanically fastened with 1/2" dia. X 2" long 13 UNC stainless steel hex head cap screws to horizontal arms

Back of panel, vertical and horizontal rails: MAP 56A-1A Jamaican Holiday (satin)

8 5/8" O.D. (.322" wall thickness) aluminum pipe painted SW 4079 Laser Blue (gloss) let into and welded to 21" dia. x 1" aluminum baseplate. Provide (4) 6" x 12" x 3/4" triangular aluminum plate gussets welded to column and base-plate, as shown. Provide (4) 1 1/8" dia. holes for 1" dia. J-bolt connection.

Provide top cap; weld, grind, fill, and prime prior to final color coat painted to match pipe SW 4079 Laser Blue (gloss)

Concrete base
See page 13 for detail

(Type D) S/F Non-Lighted Directional Sign on Aluminum Column
1/2" = 1'-0" (10) required

SIGNAGE

PLEASE ANSWER ALL QUESTIONS

ADDRESS: 1101 WESTBROOK ZONE: _____

OWNER: BERTRAND TETROTT (CITY OF PORTLAND)

APPLICANT: NEORPACT SIGNS

ASSESSOR NO.: _____

SINGLE TENANT LOT? YES _____ NO X

MULTI TENANT LOT? YES _____ NO X

FREESTANDING SIGN? YES X NO _____ DIMENSIONS _____

MORE THAN ONE SIGN? YES _____ NO X DIMENSIONS _____

BLDG. WALL SIGN? YES _____ NO X DIMENSIONS _____

(attached to bldg) MORE THAN ONE SIGN? YES _____ NO _____ DIMENSIONS _____

LIST ALL EXISTING SIGNAGE AND THEIR DIMENSIONS: _____

LOT FRONTAGE (FEET) _____

BLDG FRONTAGE (FEET) _____

AWNING YES _____ NO X IS AWNING BACKLIT? YES _____ NO _____

HEIGHT OF AWNING: _____

IS THERE ANY COMMUNICATION, MESSAGE, TRADEMARK OR SYMBOL ON IT? _____

A SITE SKETCH AND BUILDING SKETCH SHOWING EXACTLY WHERE EXISTING AND NEW SIGNAGE IS LOCATED MUST BE PROVIDED. SKETCHES AND/OR PICTURES OF THE

PROPOSED SIGNS ARE ALSO REQUIRED.

STEEL TYPE OR SIZE(S)

TOTAL AREA

[A]* (2) @ 80 SQFT.

160 SQFT

[B] ~~(4)~~ @ 45 SQFT

180 SQFT

[C]* (6)

C-101	21.75	SQ.FT
C-102	25.25	SQ.FT
C-103	27.75	SQ.FT
C-104	27.75	SQ.FT
C-105	27.75	SQ.FT
C-106	21.75	SQ.FT

168 SQFT

[D] (10) @ 33 SQFT

330 SQFT

22 SIGNS

838 SQFT

ILLUMINATED SIGNS

(2) TYPE A

(6) TYPE C

8 TOTAL SIGNS

(Plus (6) ^{ILLUMINATED} FLOOD LIGHTS)

RE: Analysis of Signs
Portland International Jeport
File No.: 97-077

September 19, 1997

Mr. Paul Lessard
Neokraft Signs, Inc.
686 Main Street
Lewiston, ME 04240

Dear Paul:

We have reviewed the support structure and foundations for the proposed signs at the Portland International Jeport as shown on shop drawings No. 1 to 9, dated August 21, 1997. We have also investigated the possibility of reducing the support pipes from schedule 40 to a lesser size.

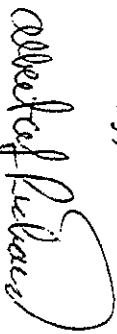
The foundation investigation was based on average soil conditions. The single support signs were evaluated using design criteria developed by the Outdoor Advertising Association of America, Inc. Under those conditions we found the foundation adequate to support the proposed signs. If poor soils are encountered on the site, the sign foundations would need to be reevaluated.

Our review of the support structures was limited to the main support pipes. The single post signs are supported by 8-5/8" O.D. (.322"), 6063-T5 aluminum pipes. These structures were analyzed using design specifications from "Standard Specification for Structural Support for Highway Signs, Luminaries and Traffic Signals 1994," by the "American Association of State Highway and Transportation Officials", and the "Aluminum Design Manual 1994," by "The Aluminum Association", and wind loads from the 1996 BOCA Code. Stresses in the support pipes caused by bending, torsion, and axial load were found to be within allowable stresses for the pipe size noted on the drawings, but were above the allowable stresses when thinner pipe was evaluated.

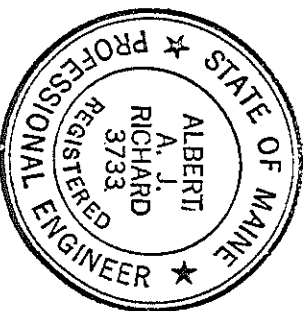
The 2-1/2 inch I.D. steel pipes supporting the PWM letters were investigated and found adequate to support that sign.

If you have any questions, please call.

Sincerely,



Albert A. J. Richard, P.E.



REDCED COPY

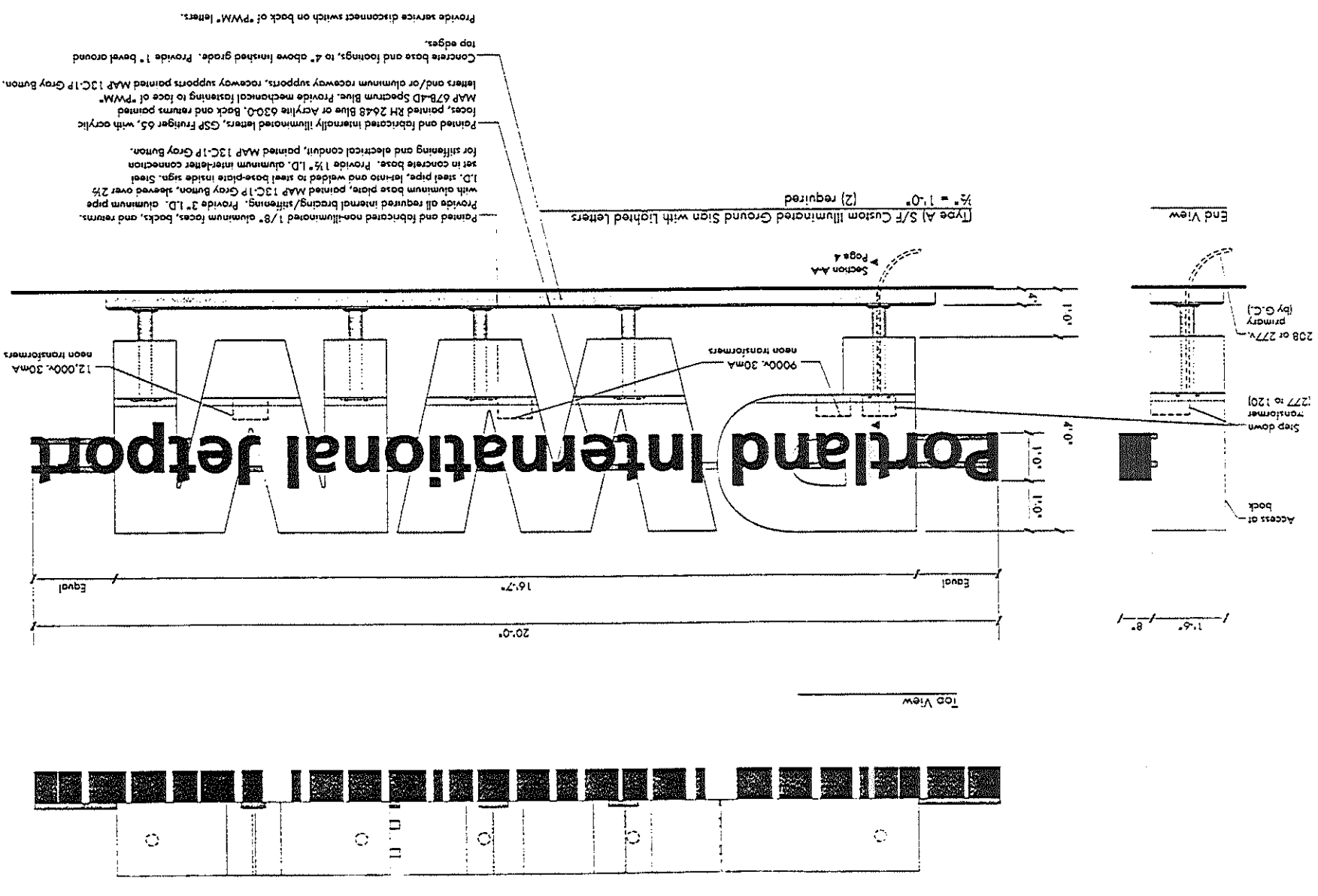
Gen Ref:
Revised:
Drawn by: J. Foggo
Drawing No.: 1 of 9
Date: 8-21-97
Location: Pomona, ME

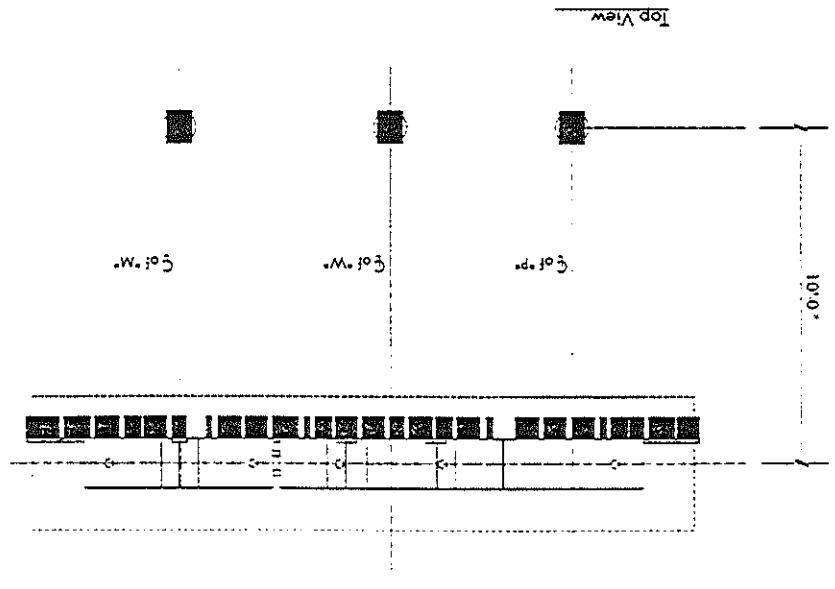
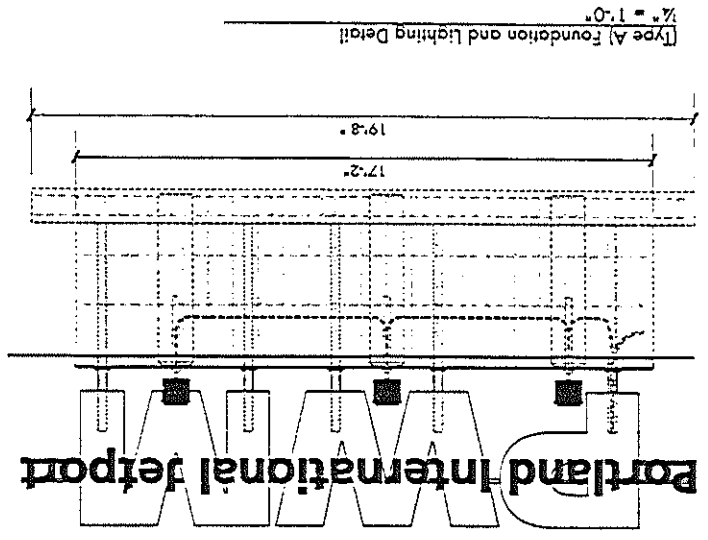
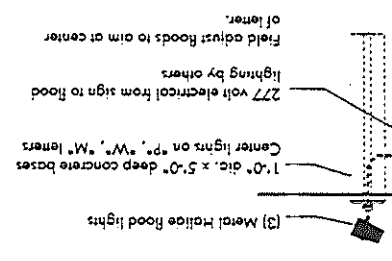
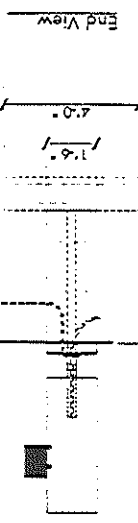
International Jetport
Portland
97NK3192
Engineering
Drawing

All ideas, plans or arrangements indicated on this drawing are copyrighted and owned by Neokraft Signs Inc. and shall not be reproduced, used by or disclosed to any person, firm or corporation without written permission of Neokraft Signs Inc.

Neokraft Signs Inc.
586 Main Street
Lewiston, Maine 04240
Telephone: 207 782 9654
Facsimile: 207 782 0009
1 800 339 2258
http://www.neokraft.com
Custom Sign Fabrication

Neokraft





Location: Portland, ME
 Date: 8-21-97
 Drawing No.: 2 of 9
 Drawn by: J. Fogg
 Revised:
 Gen. Ed.:

International Jetport
 Portland
 97NK3192
 Drawing
 Engineering

All ideas, plans or arrangements indicated on this drawing are copyrighted and owned by Neokraft Signs Inc. and shall not be reproduced, used by or disclosed to any person, firm or corporation without written permission of Neokraft Signs Inc.

Neokraft Signs Inc.
 686 Main Street
 Lewiston, Maine 04240
 Telephone: 207.782.9654
 Facsimile: 207.782.0009
 1.800.339.2258
<http://www.neokraft.com>
 Custom Sign Fabrication

Neokraft



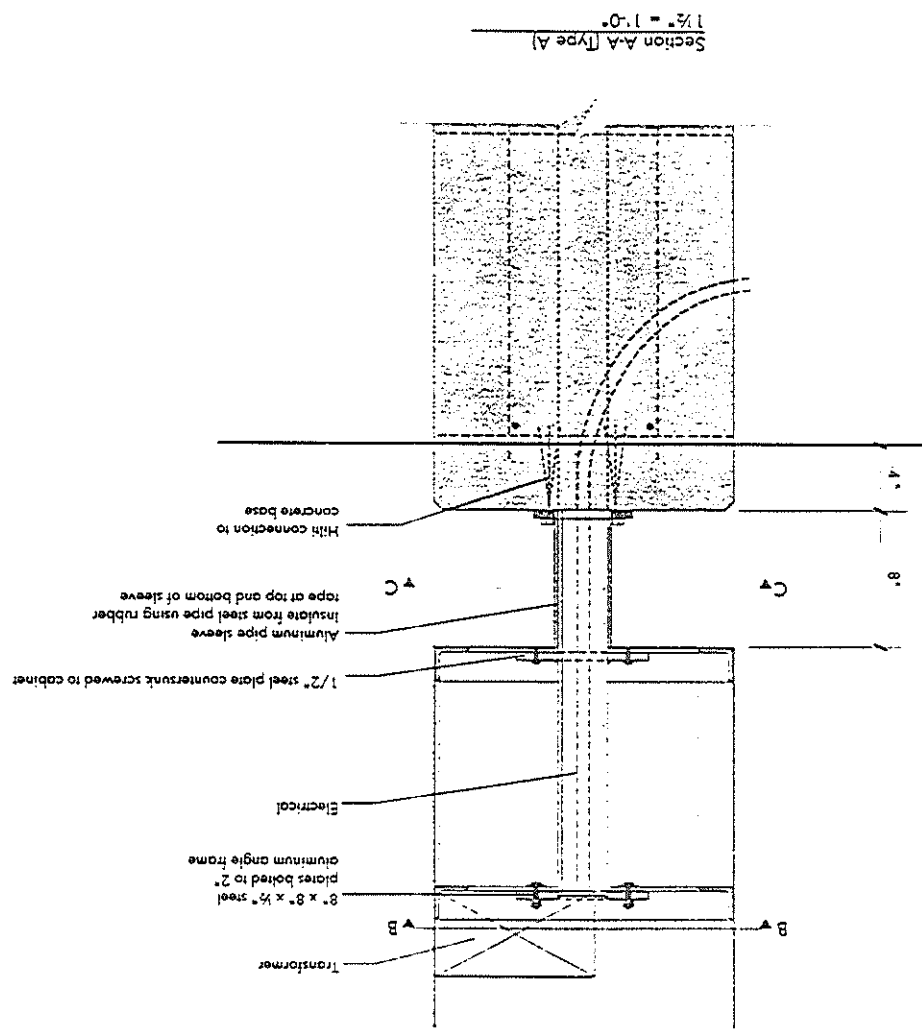
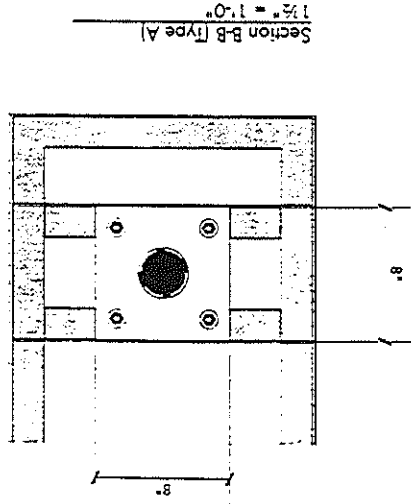
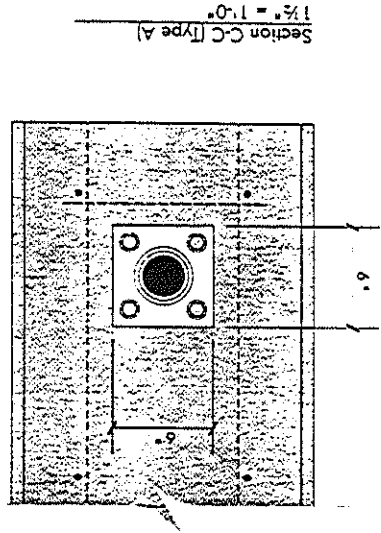
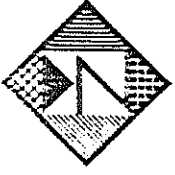
Location: Portland, ME
 Date: 8-21-07
 Drawing No.: 3 of 9
 Drawn by: J. Fogg
 Revised:
 Gen Ref:

International Jetport
 Portland
 97NK3192
Engineering Drawing

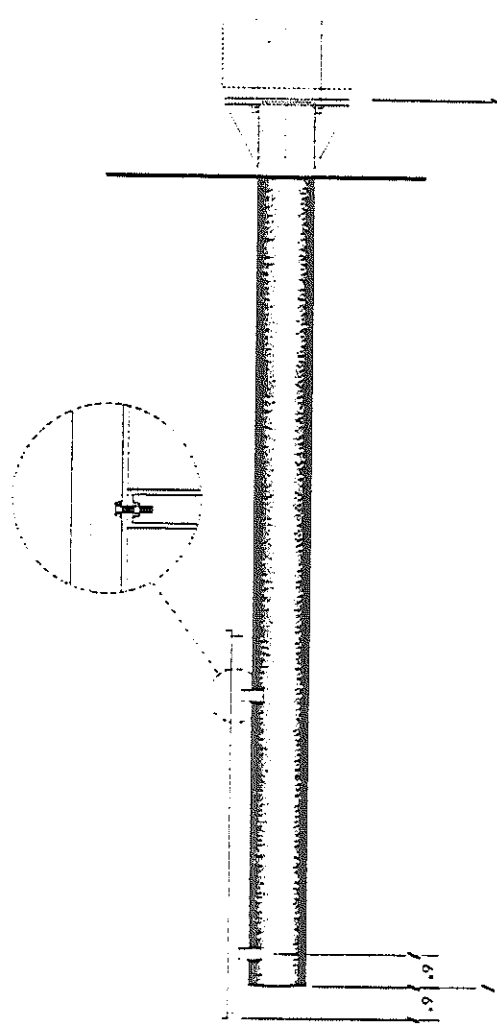
All ideas, plans or arrangements indicated on this drawing are copyrights and owned by Neokraft Signs Inc. and shall not be reproduced, used by or disclosed to any person, firm or corporation without written permission of Neokraft Signs Inc.

Neokraft Signs Inc.
 686 Main Street
 Lewiston, Maine 04240
 Telephone: 207.782.9654
 Facsimile: 207.782.0009
 1.800.339.2258
<http://www.neokraft.com>
 Custom Sign Fabrication

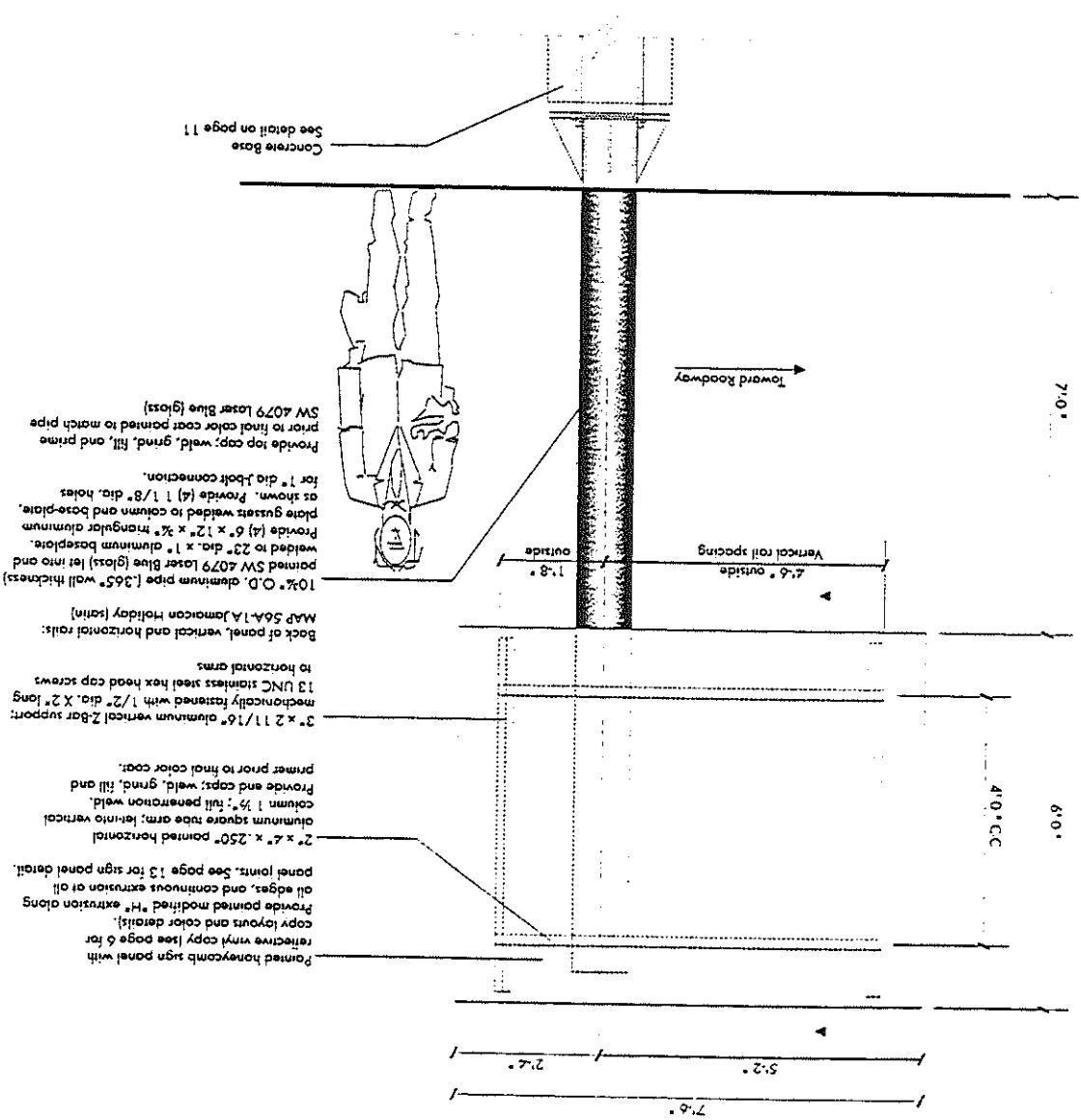
Neokraft



End View



[Type B] S/F Non-Lighted Directional Sign on Aluminum Column
1/2" = 1'-0" (4) required



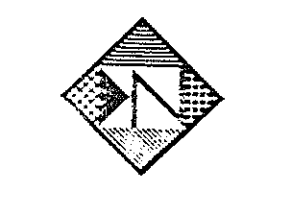
- Painted honeycomb sign panel with reflective vinyl copy (see page 6 for copy layouts and color details).
- Provide painted modified "H" extrusion along all edges, and continuous extrusion at all panel joints. See page 13 for sign panel detail.
- 2" x 4" x .250" painted horizontal aluminum square tube arm; join to vertical column 1/2"; full penetration weld.
- Provide end caps; weld, grind, fill and primer prior to final color coat.
- 3" x 2 1/16" aluminum vertical Z-Bar support; mechanically fastened with 1/2" dia. X 2" long 13 UNC stainless steel hex head cap screws to horizontal arms.
- MAP 56A-1A Jamaican Holiday (satin)
- 10% O.D. aluminum pipe (.365" wall thickness) primed SW 4079 Laser Blue (gloss) let into end welded to 2" dia. x 1" aluminum baseplate.
- Provide (4) 6" x 12" x 3/4" triangular aluminum plate gussets welded to column and base-plate.
- Provide (4) 1 1/8" dia. holes for 1" dia. J-bolt connection.
- Provide top cap; weld, grind, fill, and primer prior to final color coat primed to match pipe SW 4079 Laser Blue (gloss)

Location: 5 Portland, ME
 Date: 8-21-97
 Drawing No.: 4 of 9
 Drawn by: J. Fogg
 Revised:
 Gen Ref:

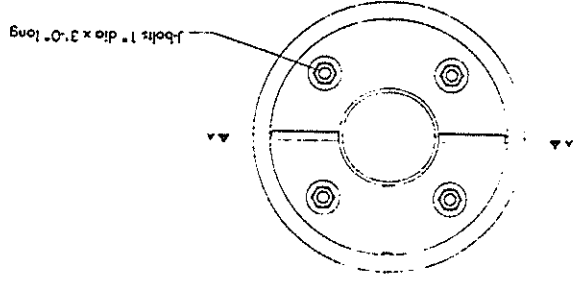
International Jetport
 Portland
 97NK3192
Engineering Drawing

All ideas, plans or arrangements indicated on this drawing are copyrighted and owned by Neokraft Signs Inc. and shall not be reproduced, used by or disclosed to any person, firm or corporation without written permission of Neokraft Signs Inc.

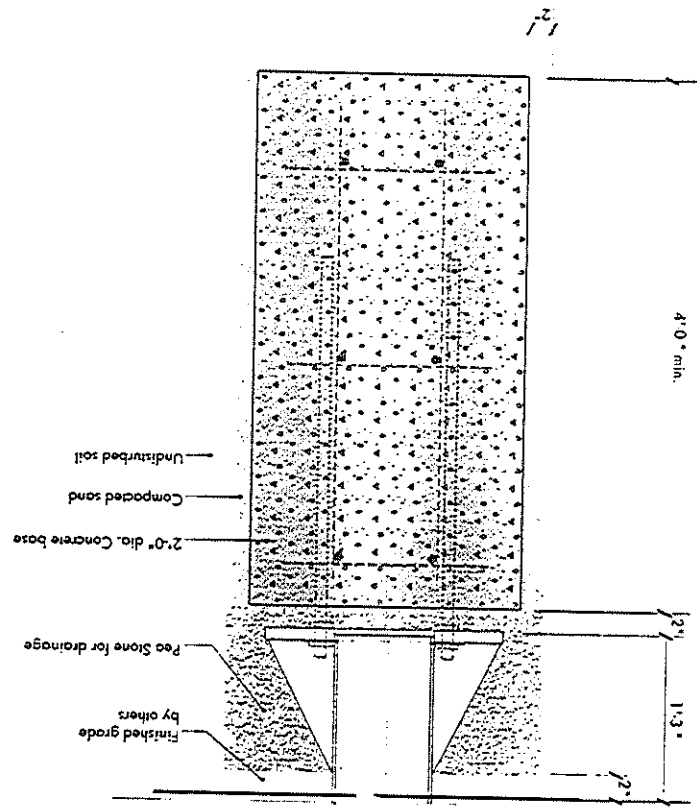
Neokraft Signs Inc.
 686 Main Street
 Lewiston, Maine 04240
 Telephone: 207.782.9654
 Faxline: 207.782.0009
 1.800.339.2258
<http://www.neokraft.com>
 Custom Sign Fabrication



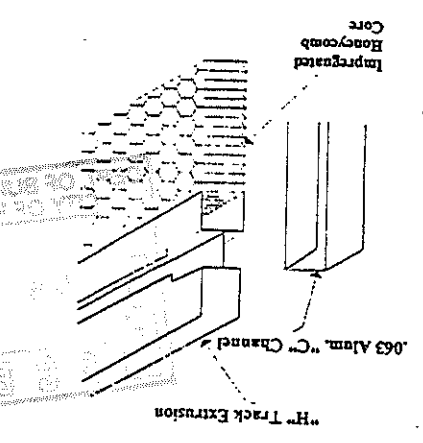
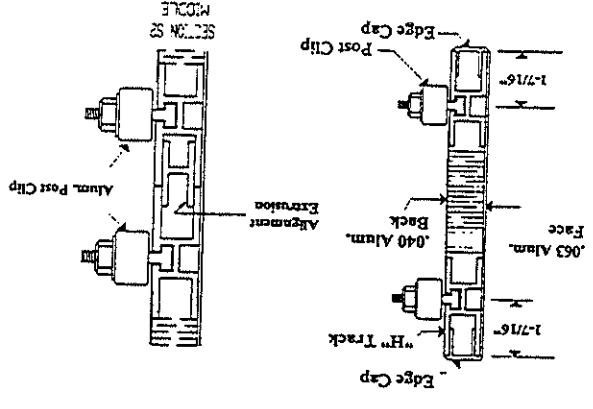
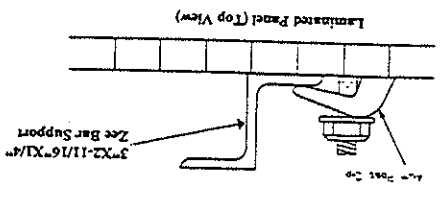
Base Plate Detail for Type D sign (Plan View)
1/2" = 1'-0"



Section A-A for Type D Sign
1/2" = 1'-0"



Details for Type (B) and Type (D) Signs from International Highway Sign Corp.
NTS



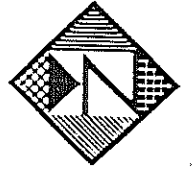
Location: Fortans, ME
Date: 8-21-87
Drawing No: 5-115
Drawn by: Pogg
Revised:
Gen Ref:

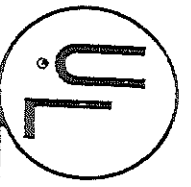
International Jetport
Portland
97NK3192
Engineering
Drawing

All ideas, plans or arrangements indicated on this drawing are copyrighted and owned by Neokraft Signs Inc. and shall not be reproduced, used by or disclosed to any person, firm or corporation without written permission of Neokraft Signs Inc.

Neokraft Signs Inc.
686 Main Street
Lewiston, Maine 04240
Telephone: 207 782 9654
Facsimile: 207 782 0009
1.800.339.2258
http://www.neokraft.com

Neokraft





UNDERWRITERS LABORATORIES INC.
185 WALT WHITMAN ROAD · MELVILLE, LONG ISLAND, NEW YORK 11767

an independent, not-for-profit organization testing for public safety

(This is also known as Underwriters Laboratories Inc. - 60th St. New York, NY)

File E113452

VOL. 1
Issued: 12-9-87

FOLLOW-UP SERVICE PROCEDURE

(TYPE L)

ELECTRIC SIGNS
(UXXY)

Manufacturer: Neokraft Signs Co.
686 Main St.
Lewiston, ME 04240

Applicant: Same as Manufacturer

Listee: Same as Manufacturer

This Procedure authorizes the above Manufacturer to use the Listing Mark of Underwriters Laboratories Inc. only on Listed products covered by this Procedure, in accordance with the Listing and Follow-Up Service Agreement.

The Prescribed Mark or Marking shall be used only at the above manufacturing location on such products which comply with this Procedure and any other applicable requirements.

The Procedure contains information for the use of the above named Manufacturer and the representatives of Underwriters Laboratories Inc. and is not to be used for any other purpose. It is lent to the Manufacturer with the understanding that it is not to be copied, either wholly or in part, and that it will be returned to Underwriters Laboratories Inc. upon request.

This Procedure, and any subsequent revisions, is the property of Underwriters Laboratories Inc. and is not transferable.

Reviewed by:

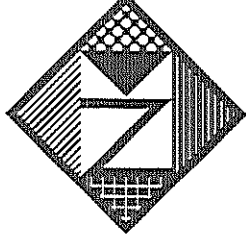
UNDERWRITERS LABORATORIES INC.

Kenneth V. Lueders
Engineer

Howard C. Korte
Vice President, Follow-Up Services

L1b/E113452-PC

Look For The Listing or Classification Mark On The Product

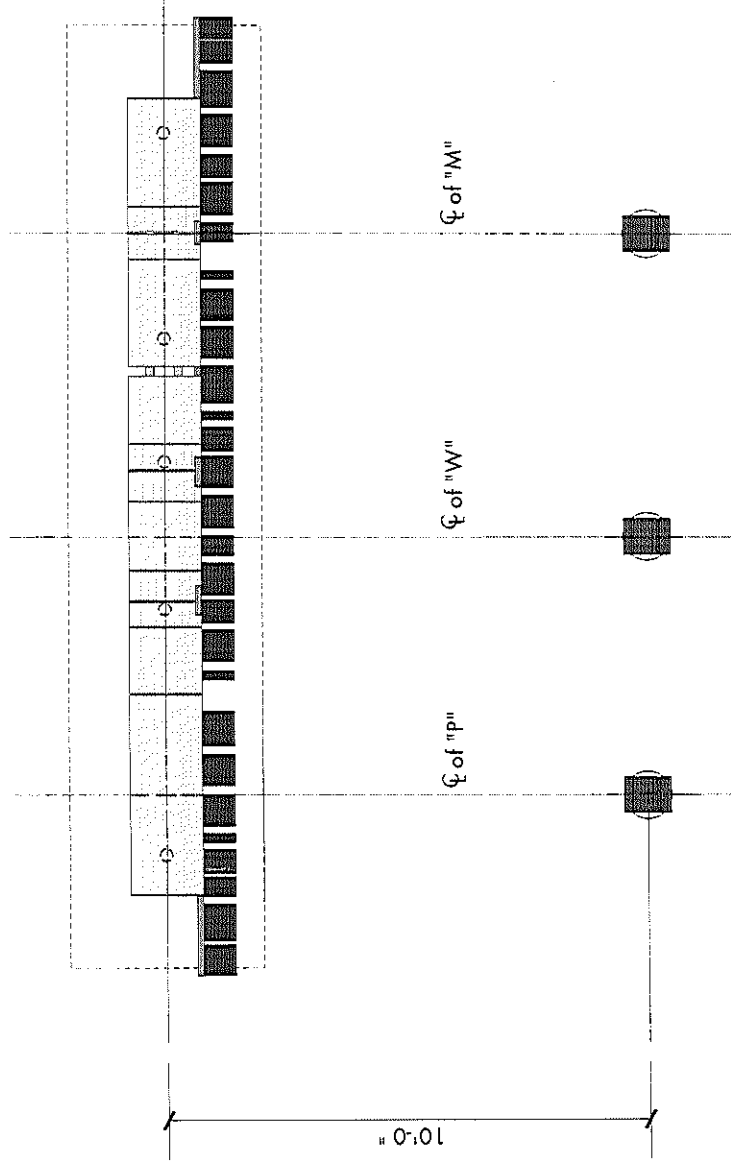


Neokraft

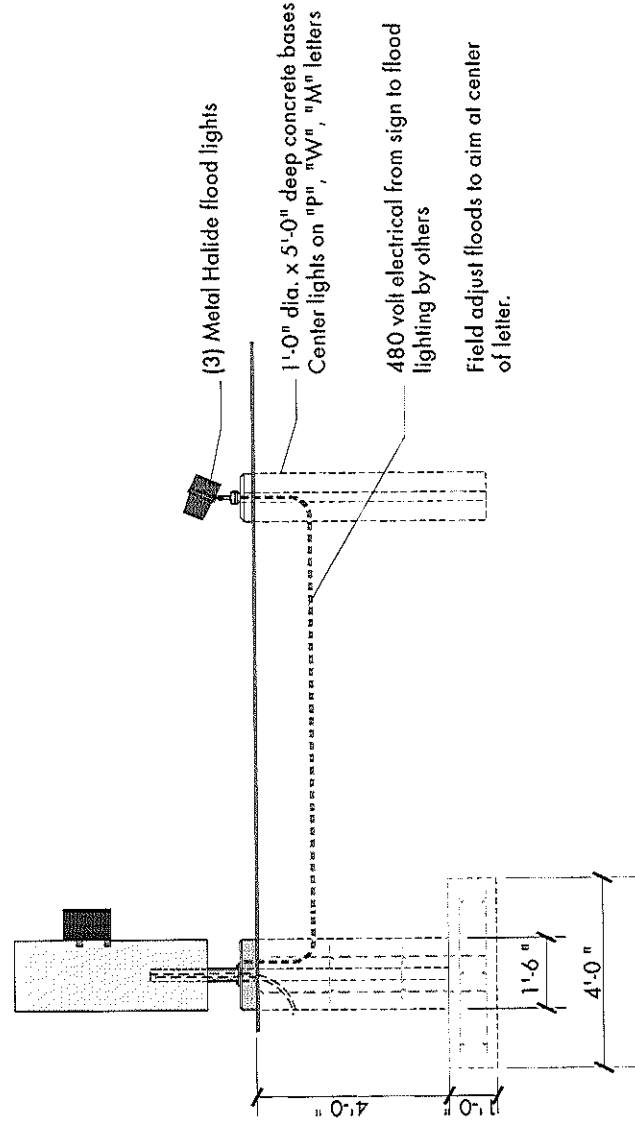
Neokraft Signs Inc.
686 Main Street
Lewiston, Maine 04240
Telephone: 207.782.9654
Facsimile: 207.782.0009
1.800.339.2258
http://www.neokraft.com

Custom Sign Fabrication

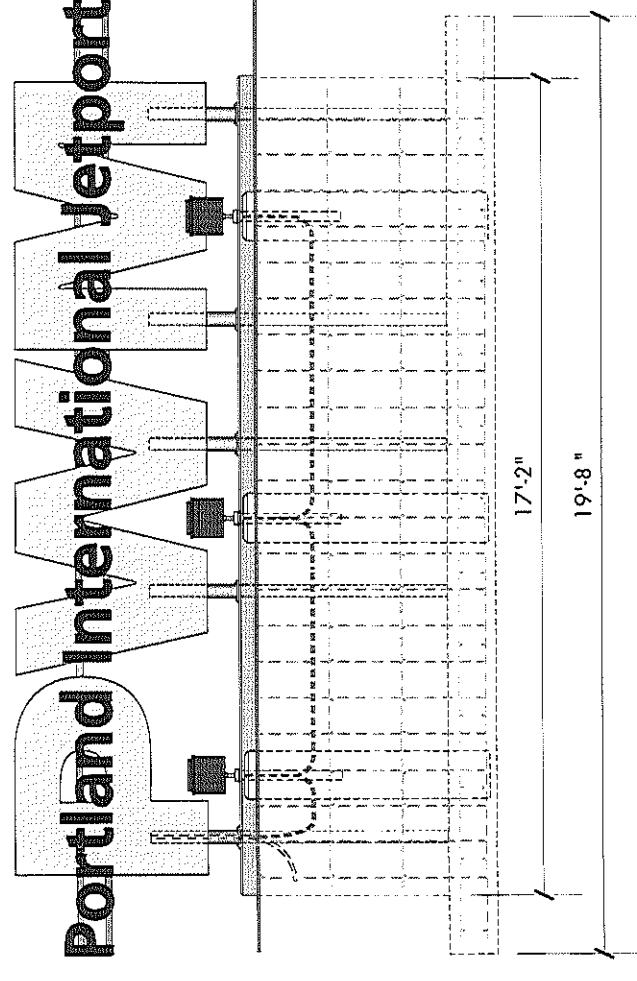
All ideas, plans or arrangements indicated on this drawing are copyrighted and owned by Neokraft Signs Inc. and shall not be reproduced, used by or disclosed to any person, firm or corporation without written permission of Neokraft Signs Inc.



Top View



End View



(Type A) Foundation and Lighting Detail

1/4" = 1'-0"

Shop Drawing

97NK3192
Portland
International Jetport

Location: S. Portland, ME

Date: 9-10-97

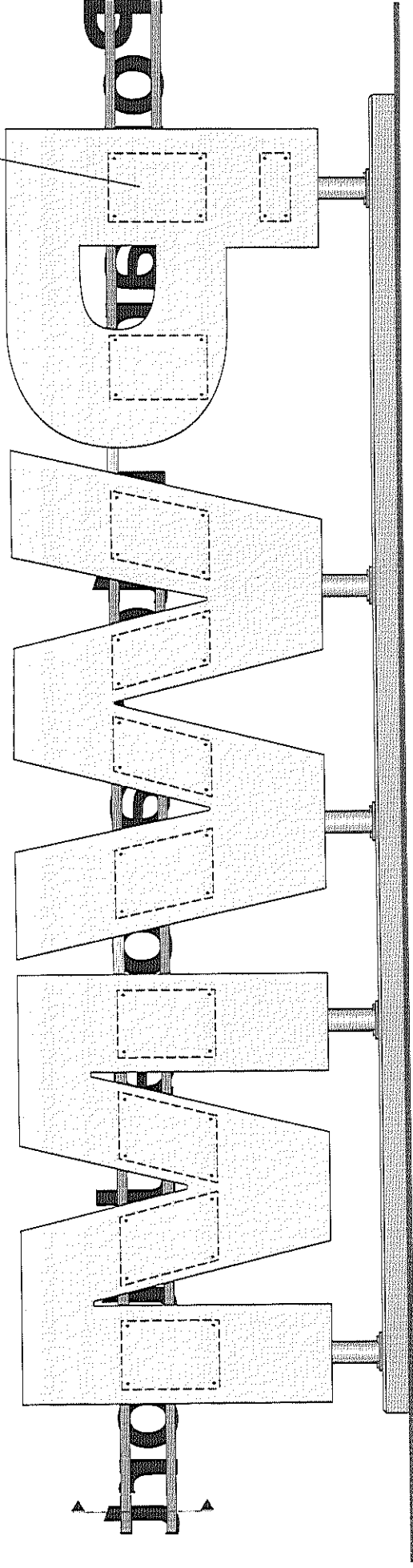
Drawing No.: 2 of 17

Drawn by: J. Fogg

Revised:

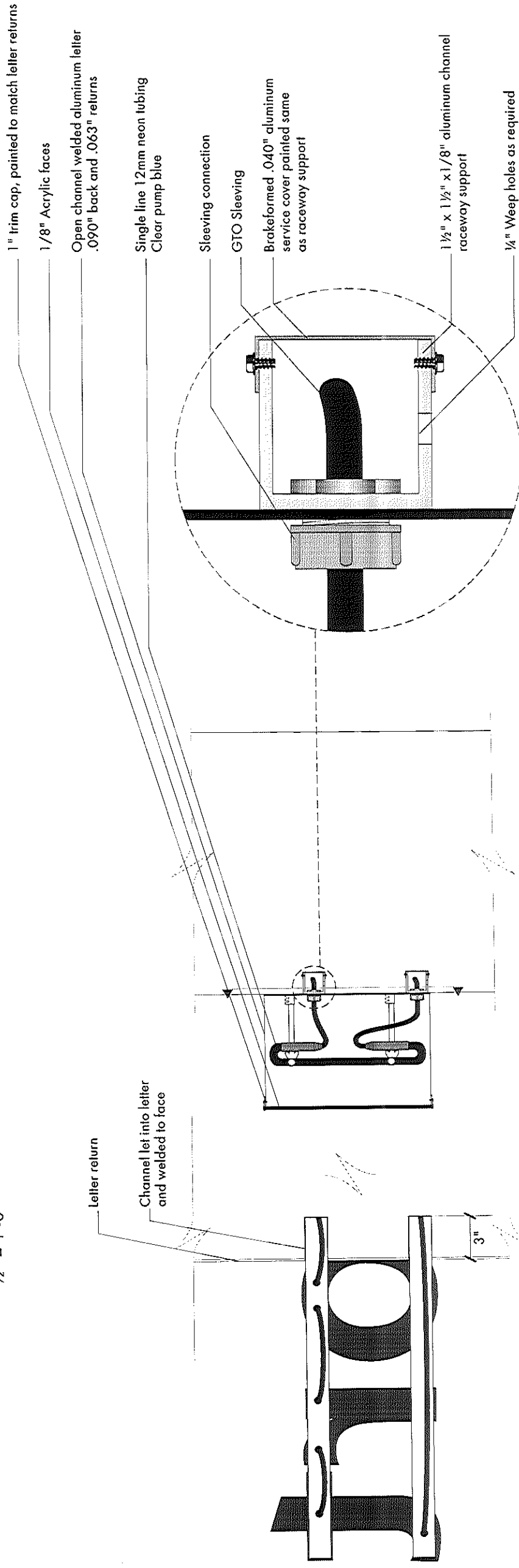
Gen Ref.:

Access panels as required
Flush routed, ship lap attachment



Back of (Type A) S/F Custom Illuminated Ground Sign

1/2" = 1'-0"



Letter return

Channel let into letter and welded to face

Single line 12mm neon tubing
Clear pump blue

Sleeving connection

GTO Sleeving

Brakeformed .040" aluminum service cover painted same as raceway support

1 1/2" x 1 1/2" x 1/8" aluminum channel raceway support

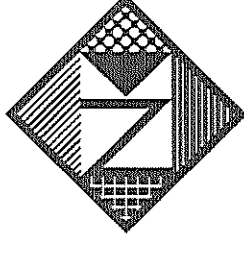
1/4" Weep holes as required

Section through Raceway Support

1 1/2" = 1'-0"

Section Detail

Full Size



Neokraft

Neokraft Signs Inc.
686 Main Street
Lewiston, Maine 04240
Telephone: 207.782.9654
Facsimile: 207.782.0009
1.800.339.2258
http://www.neokraft.com

Custom Sign Fabrication

All ideas, plans or arrangements indicated on this drawing are copyrighted and owned by Neokraft Signs Inc. and shall not be reproduced, used by or disclosed to any person, firm or corporation without written permission of Neokraft Signs Inc.

Shop Drawing

97NK3192

Portland

International Jetport

Location: S. Portland, ME

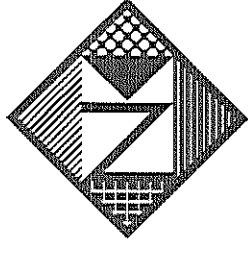
Date: 9-10-97

Drawing No.: 3 of 17

Drawn by: J. Fogg

Revised:

Gen Ref.:



Neokraft

Neokraft Signs Inc.
686 Main Street
Leviston, Maine 04240
Telephone: 207.782.9654
Facsimile: 207.782.0009
1.800.339.2258
http://www.neokraft.com

Custom Sign Fabrication

All ideas, plans or arrangements indicated on this drawing are copyrighted and owned by Neokraft Signs Inc. and shall not be reproduced, used by or disclosed to any person, firm or corporation without written permission of Neokraft Signs Inc.

Shop Drawing

97NK3192

Portland

International Jetport

Location: S. Portland, ME

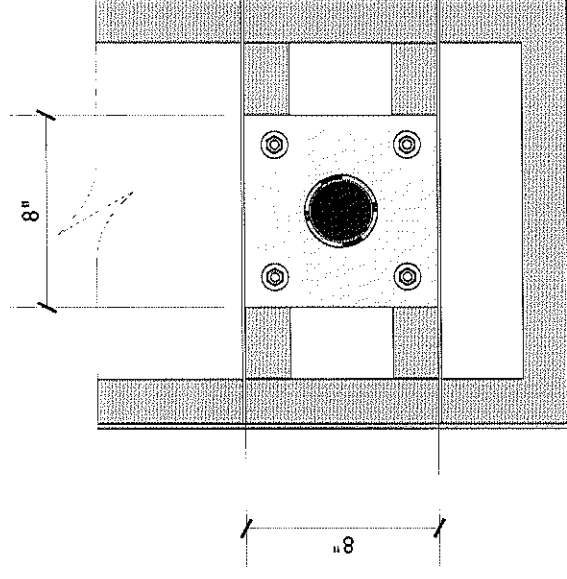
Date: 9-10-97

Drawing No.: 4 of 17

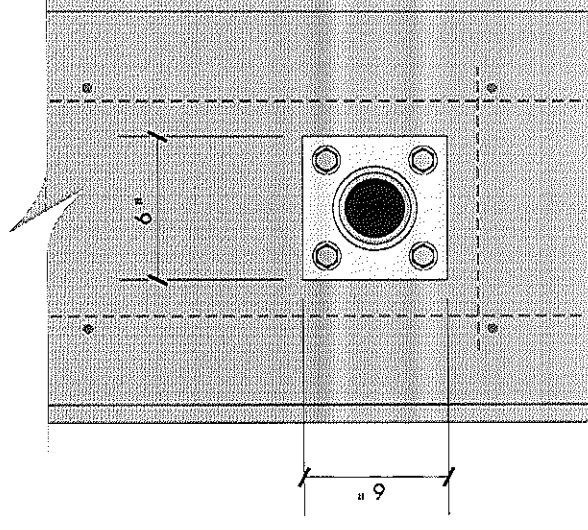
Drawn by: J. Fogg

Revised:

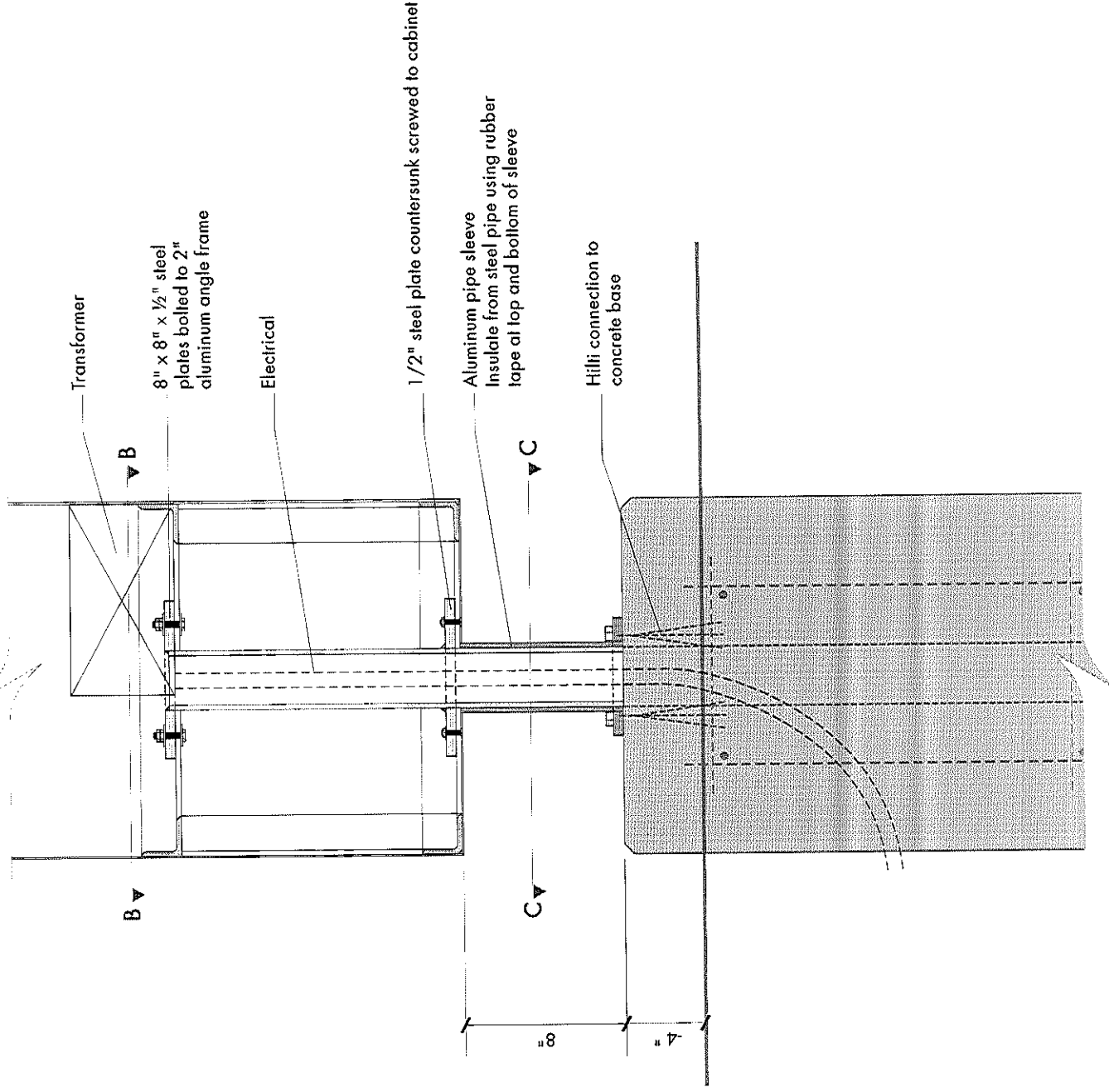
Gen Ref.:



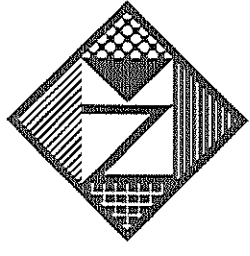
Section B-B (Type A)
1 1/2" = 1'-0"



Section C-C (Type A)
1 1/2" = 1'-0"



Section A-A (Type A)
1 1/2" = 1'-0"



Neokraft

Neokraft Signs Inc.
686 Main Street
Lewiston, Maine 04240
Telephone: 207.782.9654
Facsimile: 207.782.0009
1.800.339.2258
http://www.neokraft.com

Custom Sign Fabrication

All ideas, plans or arrangements indicated on this drawing are copyrighted and owned by Neokraft Signs Inc. and shall not be reproduced, used by or disclosed to any person, firm or corporation without written permission of Neokraft Signs Inc.

Shop Drawing

97NK3192

Portland

International Jetport

Location: S. Portland, ME

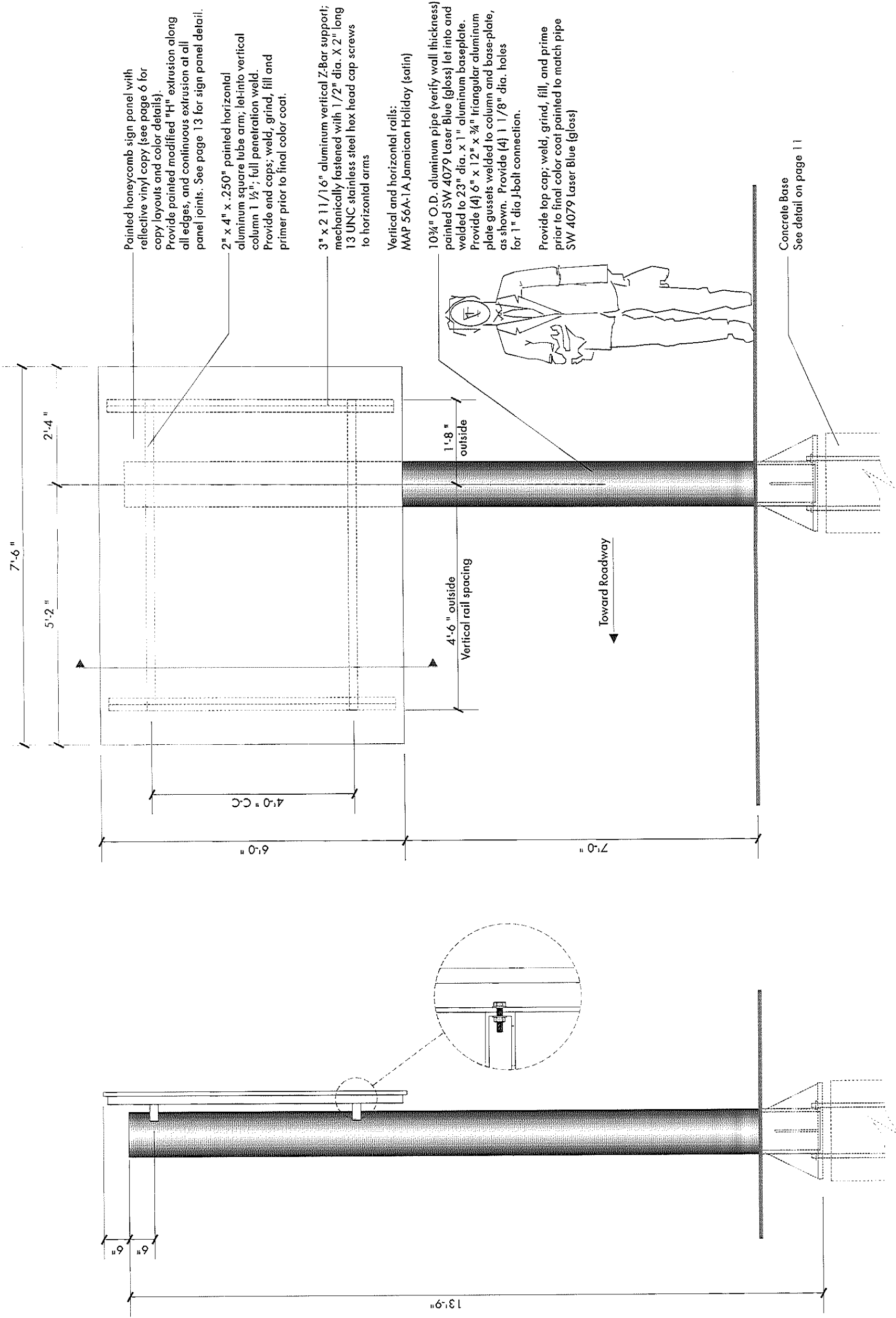
Date: 9-10-97

Drawing No.: 5 of 17

Drawn by: J. Fogg

Revised:

Gen Ref.:



Painted honeycomb sign panel with reflective vinyl copy (see page 6 for copy layouts and color details). Provide painted modified "H" extrusion along all edges, and continuous extrusion at all panel joints. See page 13 for sign panel detail.

2" x 4" x .250" painted horizontal aluminum square tube arm; let into vertical column 1 1/2"; full penetration weld. Provide end caps; weld, grind, fill and primer prior to final color coat.

3" x 2 1/16" aluminum vertical Z-Bar support; mechanically fastened with 1/2" dia. X 2" long 13 UNC stainless steel hex head cap screws to horizontal arms

Vertical and horizontal rails:
MAP 56A-1A Jamaican Holiday (satin)

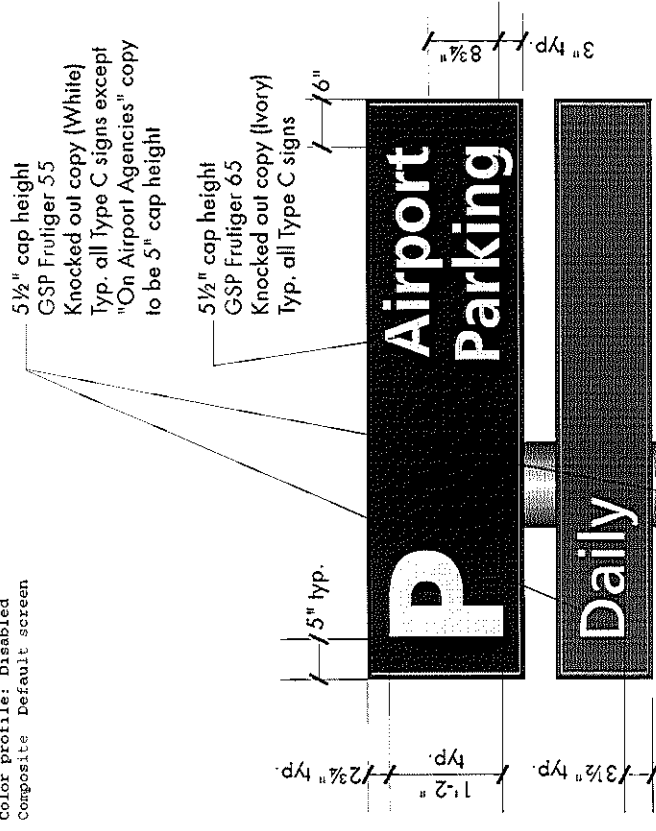
10 3/4" O.D. aluminum pipe (verify wall thickness) painted SW 4079 Laser Blue (gloss) let into and welded to 23" dia. x 1" aluminum baseplate. Provide (4) 6" x 12" x 3/4" triangular aluminum plate gussets welded to column and base-plate, as shown. Provide (4) 1 1/8" dia. holes for 1" dia. J-bolt connection.

Provide top cap; weld, grind, fill, and prime prior to final color coat painted to match pipe SW 4079 Laser Blue (gloss)

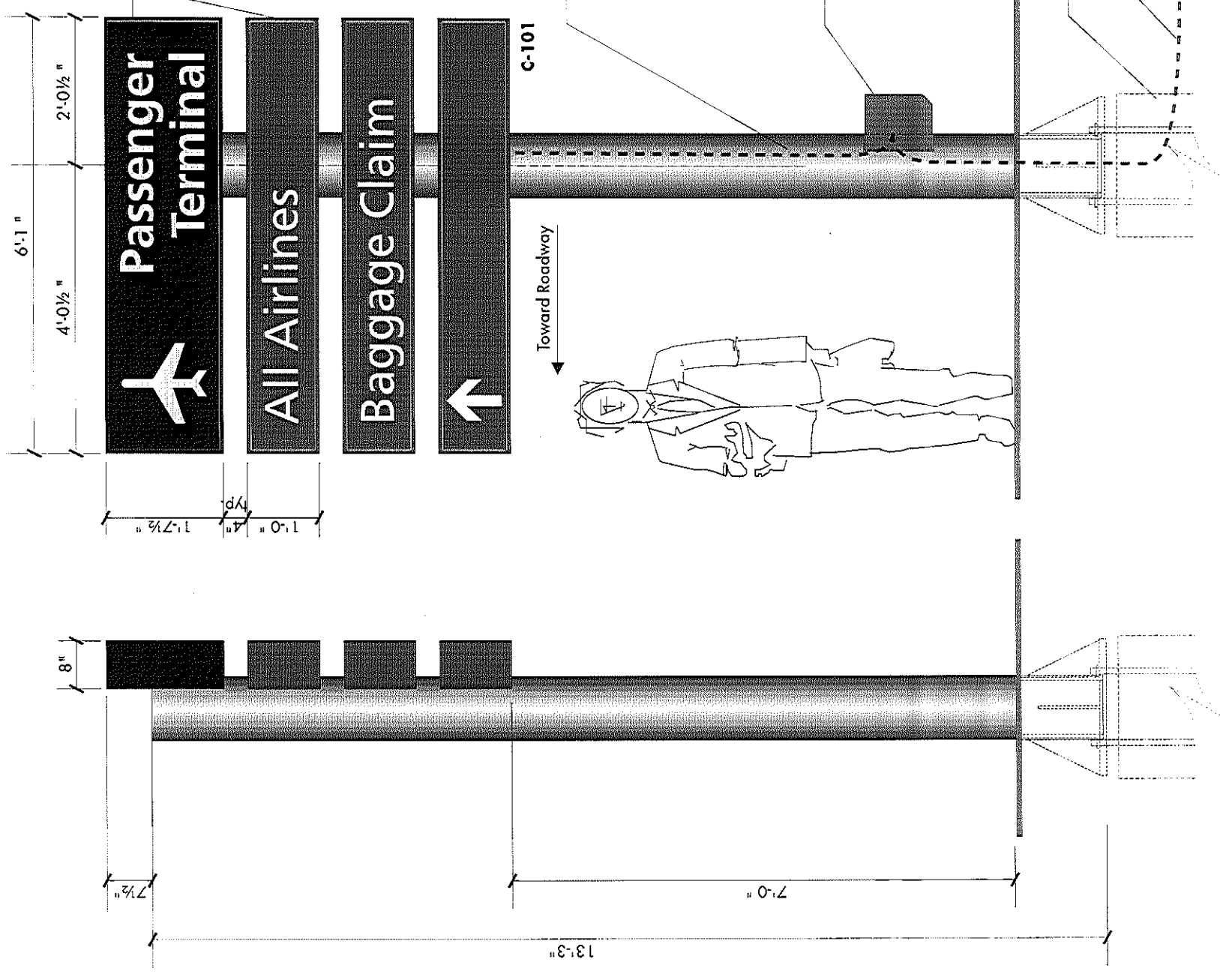
Concrete Base
See detail on page 11

(Type B) S/F Non-Lighted Directional Sign on Aluminum Column
1/2" = 1'-0" (4) required

End View



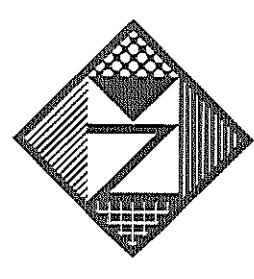
Colors:
Top cabinet returns/back: MAP 70A-1A Mosaic Blue (satin)
Top cabinet face: RH 2146 Ivory
Top cabinet background: MAP 70A-1A Mosaic Blue (satin)
Lower cabinet returns/back: MAP 56A-1A Jamaican Holiday (satin)
Lower cabinet faces: RH 7138 White 9" and 12"
Lower cabinets background: MAP 56A-1A Jamaican Holiday (satin)
Structural column: SW 4079 Laser Blue (gloss)



End View

(Type C-101, C-103, C-104) S/F Illuminated Directional Sign on Aluminum Column
1/2" = 1'-0" (3) required

Copy Layouts



Neokraft

Neokraft Signs Inc.
686 Main Street
Lewiston, Maine 04240
Telephone: 207.782.9654
Facsimile: 207.782.0009
1.800.339.2258
http://www.neokraft.com
Custom Sign Fabrication

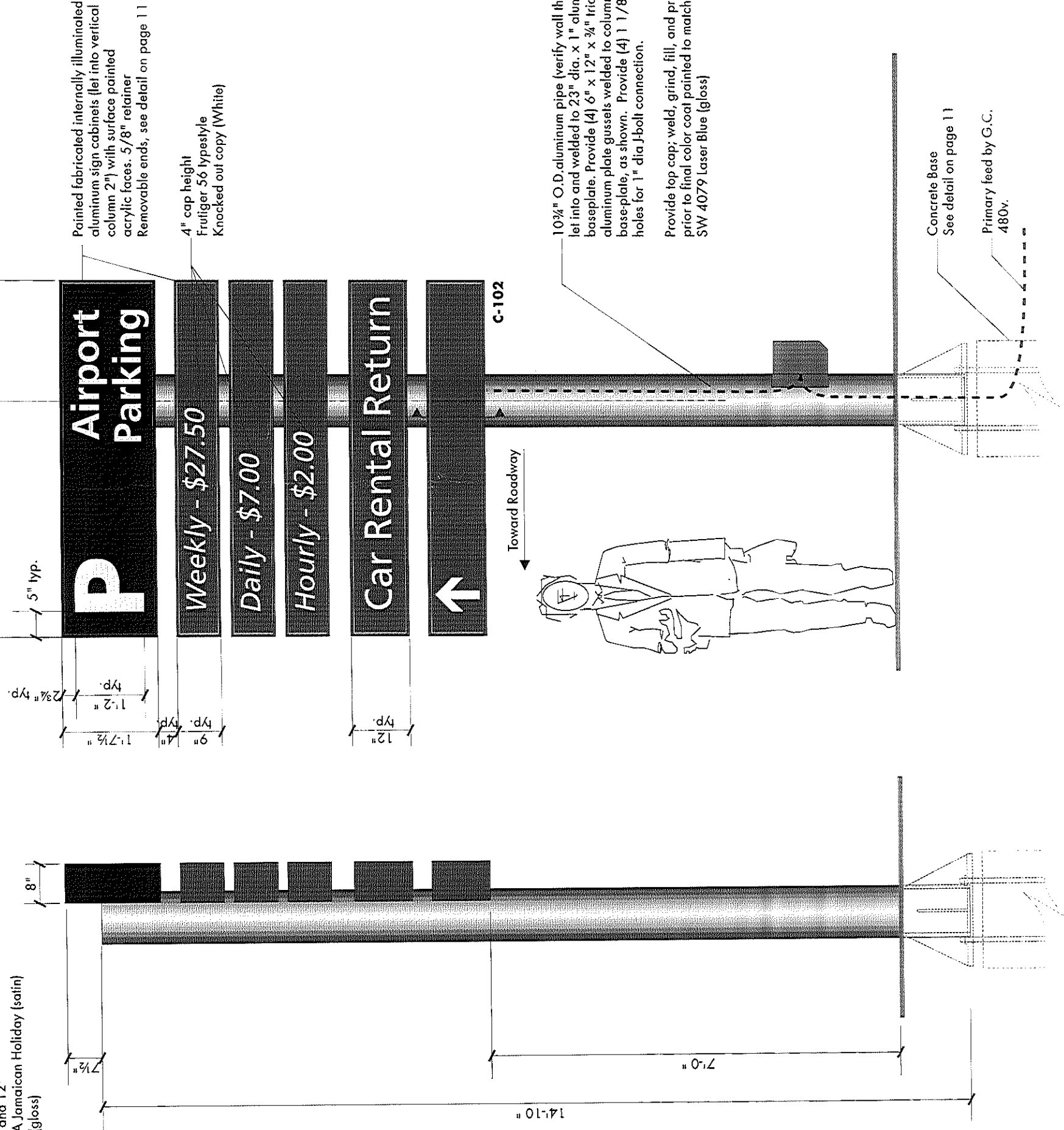
All ideas, plans or arrangements indicated on this drawing are copyrighted and owned by Neokraft Signs Inc. and shall not be reproduced, used by or disclosed to any person, firm or corporation without written permission of Neokraft Signs Inc.

Shop Drawing

97NK3192
Portland
International Jetport

Location: S. Portland, ME
Date: 9-10-97
Drawing No.: 7 of 17
Drawn by: J. Fogg
Revised: 10-10-97
Gen Ref.:

- Colors:
- Top cabinet returns/back: MAP 70A-1A Mosaic Blue (satin)
 - Top cabinet face: RH 2146 Ivory
 - Top cabinet background: MAP 70A-1A Mosaic Blue (satin)
 - Lower cabinet returns/back: MAP 56A-1A Jamaican Holiday (satin)
 - Lower cabinet faces: RH 7138 White 9" and 12"
 - Lower cabinets background: MAP 56A-1A Jamaican Holiday (satin)
 - Structural column: SW 4079 Laser Blue (gloss)



Painted fabricated internally illuminated aluminum sign cabinets (let into vertical column 2") with surface painted acrylic faces. 5/8" retainer. Removable ends, see detail on page 11

4" cap height
Frutiger, 56 typestyle
Knocked out copy (White)

10 3/4" O.D. aluminum pipe (verify wall thickness) let into and welded to 23" dia. x 1" aluminum baseplate. Provide (4) 6" x 12" x 3/4" triangular aluminum plate gussets welded to column and base-plate, as shown. Provide (4) 1 1/8" dia. holes for 1" dia J-bolt connection.

Provide top cap; weld, grind, fill, and prime prior to final color coat painted to match pipe SW 4079 Laser Blue (gloss)

Concrete Base
See detail on page 11

Primary feed by G.C.
480v.

End View

(Type C-102) S/F Illuminated Directional Sign on Aluminum Column
1/2" = 1'-0" (1) required

Neu

Neokraft Signs Inc.
686 Main Street
Leviston, Maine 04240
Telephone: 207.782.9654
Facsimile: 207.782.0009
1.800.339.2258
http://www.neokraft.com

Custom Sign Fabrication

All ideas, plans or arrangements indicated on this drawing are copyrighted and owned by Neokraft Signs Inc. and shall not be reproduced, used by or disclosed to any person, firm or corporation without written permission of Neokraft Signs Inc.

Shop Drawing

97NK3192

Portland

International Jetport

Location: S. Portland, ME

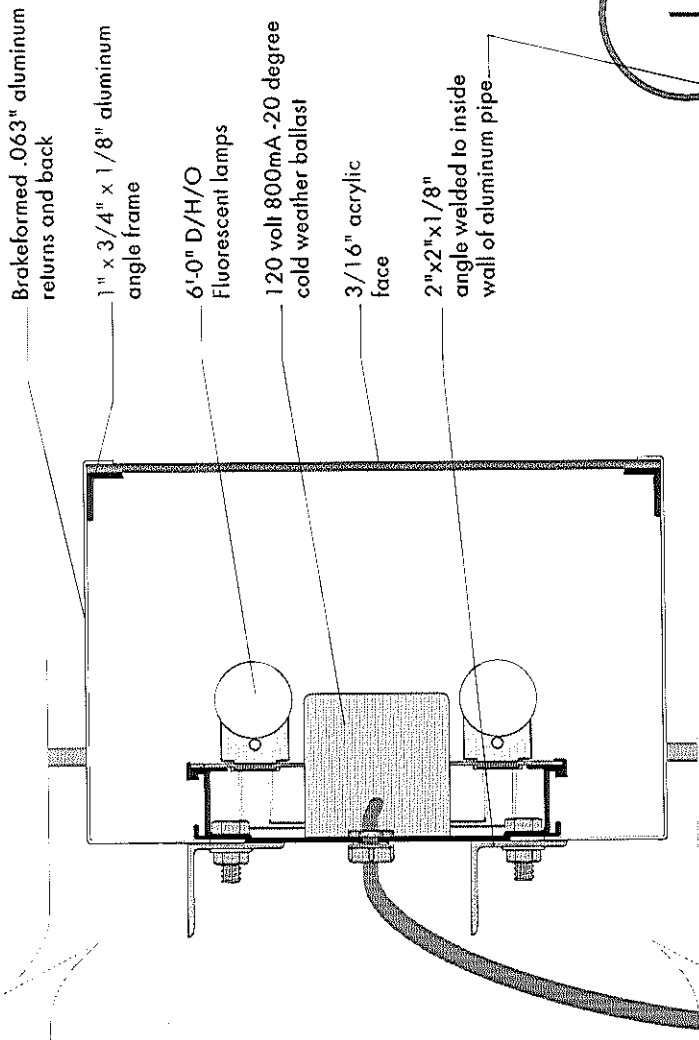
Date: 9-10-97

Drawing No.: 10 of 17

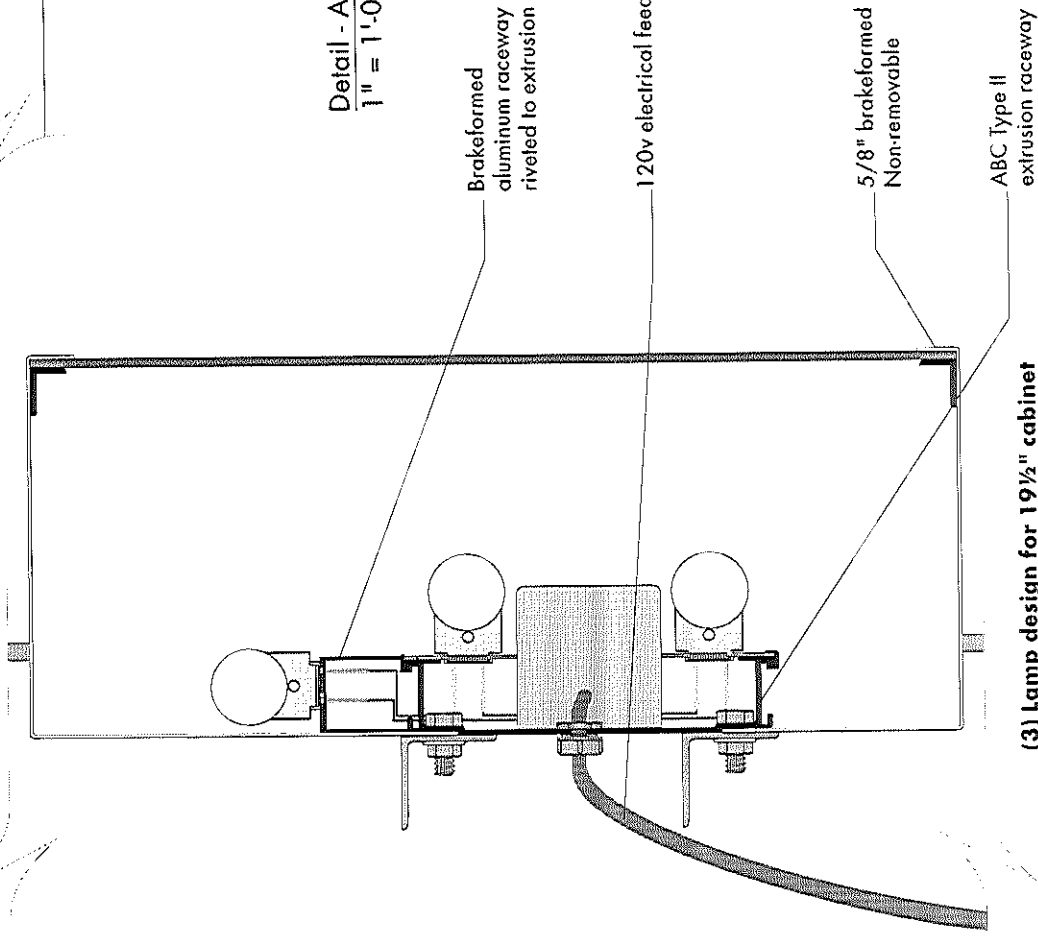
Drawn by: J. Fogg

Revised: 10-10-97

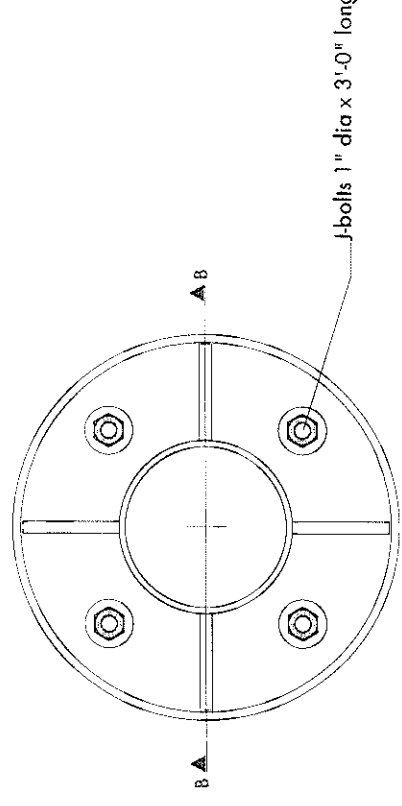
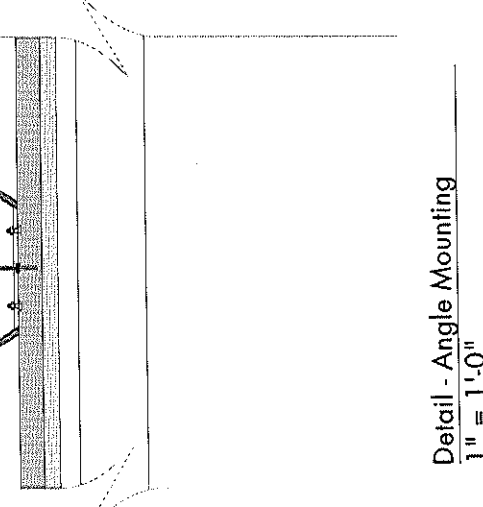
Gen Ref.:



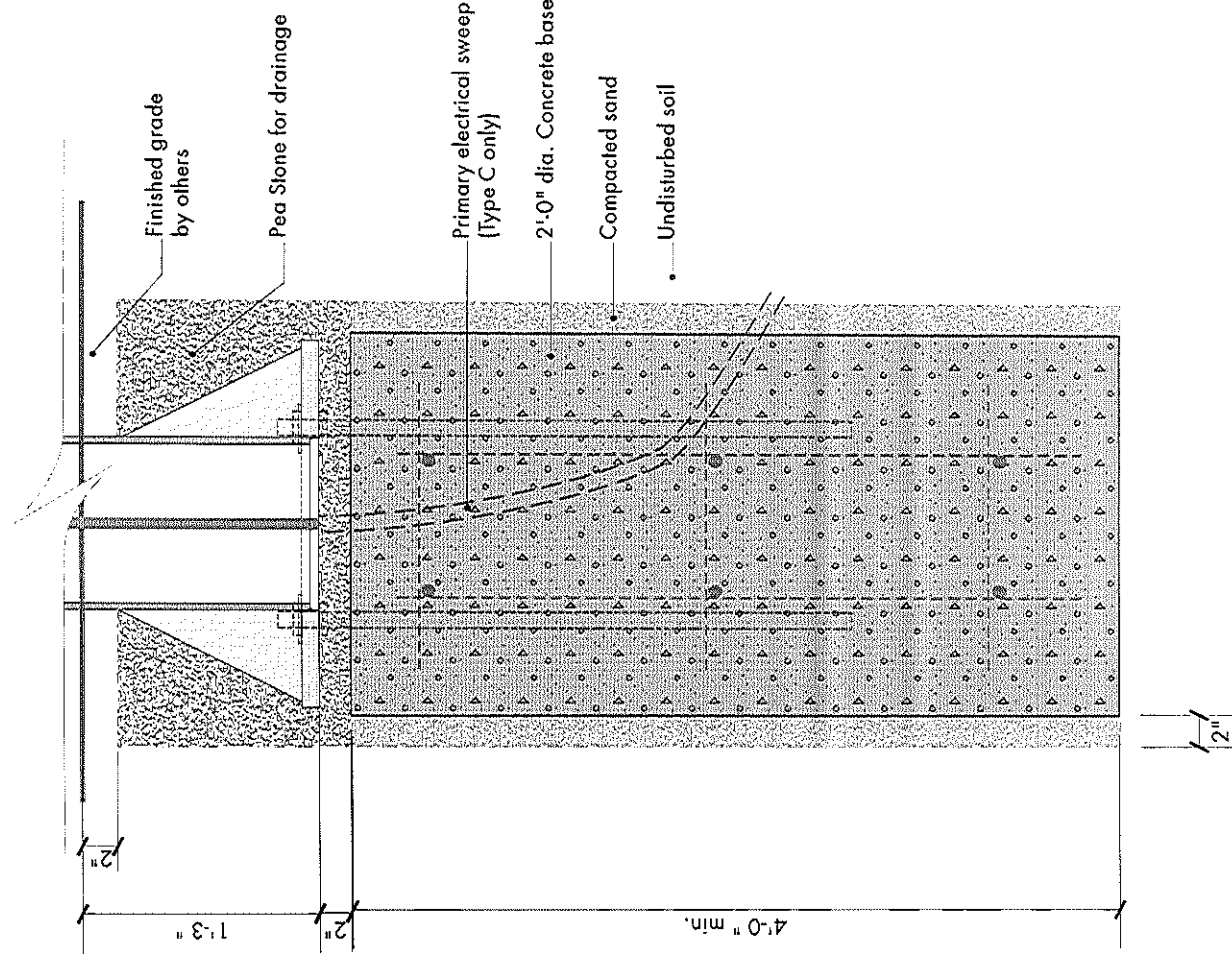
(2) Lamp design for 9" and 12" cabinet



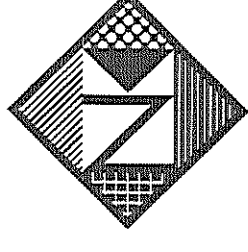
(3) Lamp design for 19 1/2" cabinet



Base Plate Detail (Plan View) for Sign Types B and C
1 1/2" = 1'-0"



Section B-B for Sign Types C - Type B Similar except with no electrical
1" = 1'-0"



Neokraft

Neokraft Signs Inc.
 686 Main Street
 Lewiston, Maine 04240
 Telephone: 207.782.9654
 Facsimile: 207.782.0009
 1.800.339.2258
 http://www.neokraft.com

Custom Sign Fabrication

All ideas, plans or arrangements indicated on this drawing are copyrighted and owned by Neokraft Signs Inc. and shall not be reproduced, used by or disclosed to any person, firm or corporation without written permission of Neokraft Signs Inc.

Shop Drawing

97NK3192

Portland

International Jetport

Location: S. Portland, ME

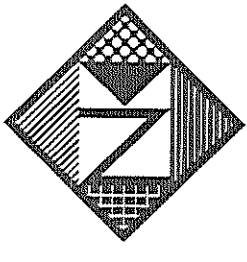
Date: 9-10-97

Drawing No.: 11 of 17

Drawn by: J. Fogg

Revised:

Gen Ref.:



Neokraft

Neokraft Signs Inc.
686 Main Street
Lewiston, Maine 04240
Telephone: 207.782.9654
Facsimile: 207.782.0009
1.800.339.2258
http://www.neokraft.com

Custom Sign Fabrication

All ideas, plans or arrangements indicated on this drawing are copyrighted and owned by Neokraft Signs Inc. and shall not be reproduced, used by or disclosed to any person, firm or corporation without written permission of Neokraft Signs Inc.

Shop Drawing

97NK3192

Portland

International Jetport

Location: S. Portland, ME

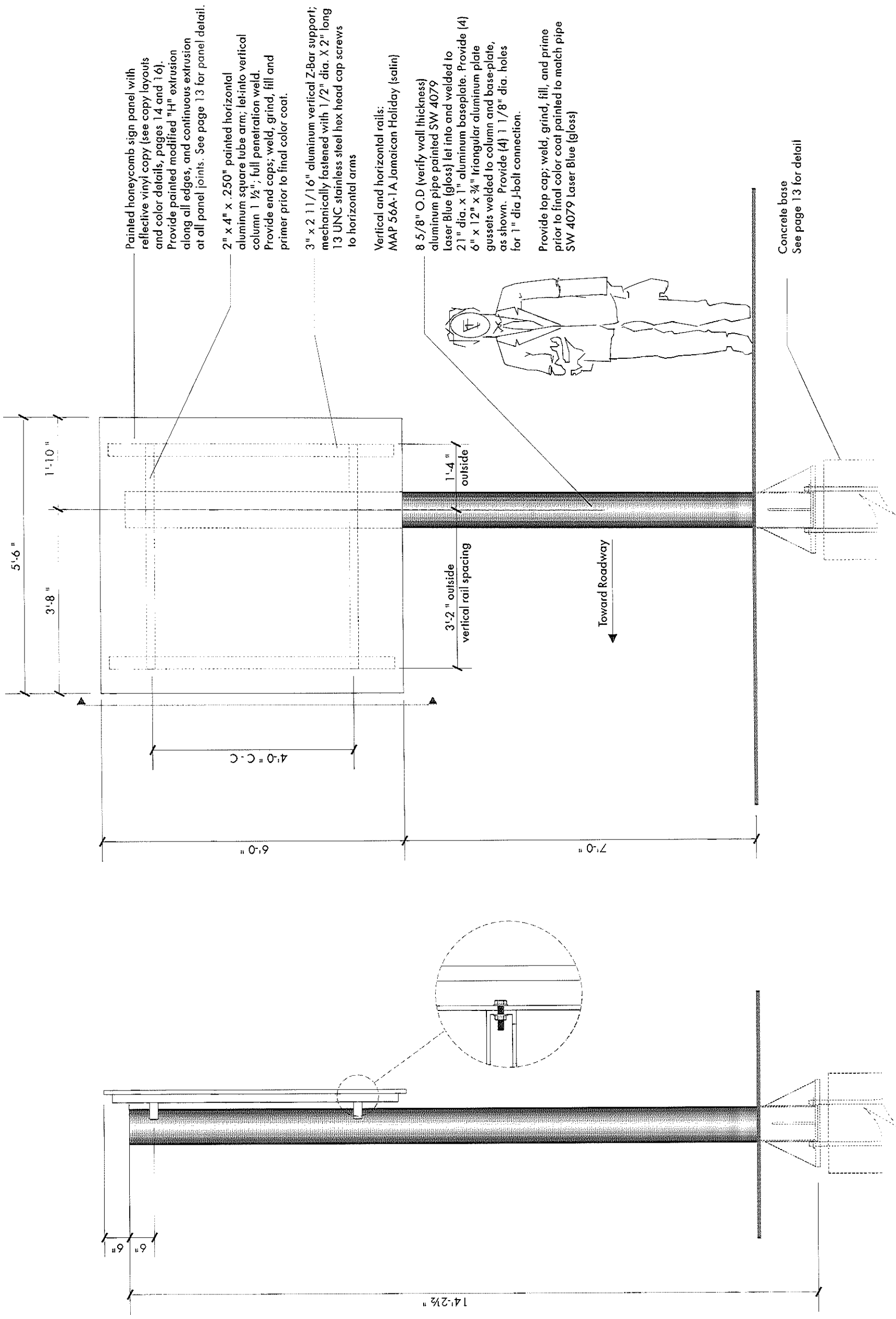
Date: 9-10-97

Drawing No.: 12 of 17

Drawn by: J. Fogg

Revised:

Gen Ref.:



Painted honeycomb sign panel with reflective vinyl copy (see copy layouts and color details, pages 14 and 16). Provide painted modified "H" extrusion along all edges, and continuous extrusion at all panel joints. See page 13 for panel detail.

2" x 4" x .250" painted horizontal aluminum square tube arm; let into vertical column 1 1/2". Full penetration weld. Provide end caps; weld, grind, fill and primer prior to final color coat.

3" x 2 1/16" aluminum vertical Z-Bar support; mechanically fastened with 1/2" dia. X 2" long 13 UNC stainless steel hex head cap screws to horizontal arms

Vertical and horizontal rails:
MAP 56A-1A Jamaican Holiday (salin)

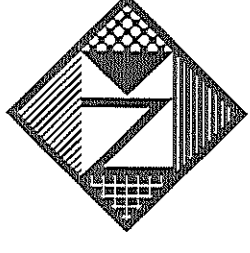
8 5/8" O.D. (verify wall thickness) aluminum pipe painted SW 4079 Laser Blue (gloss) let into and welded to 2 1/2" dia. x 1" aluminum baseplate. Provide (4) 6" x 12" x 3/4" triangular aluminum plate gussets welded to column and base-plate, as shown. Provide (4) 1 1/8" dia. holes for 1" dia J-bolt connection.

Provide top cap; weld, grind, fill, and prime prior to final color coat painted to match pipe SW 4079 Laser Blue (gloss)

Concrete base
See page 13 for detail

(Type D) S/F Non-Lighted Directional Sign on Aluminum Column
1/2" = 1'-0" (10) required

End View



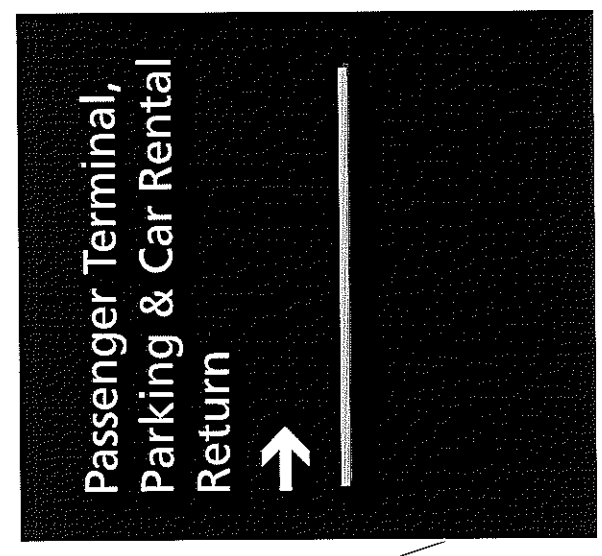
Neokraft

Neokraft Signs Inc.
686 Main Street
Lewiston, Maine 04240
Telephone: 207.782.9654
Facsimile: 207.782.0009
1-800.339.2258
http://www.neokraft.com
Custom Sign Fabrication

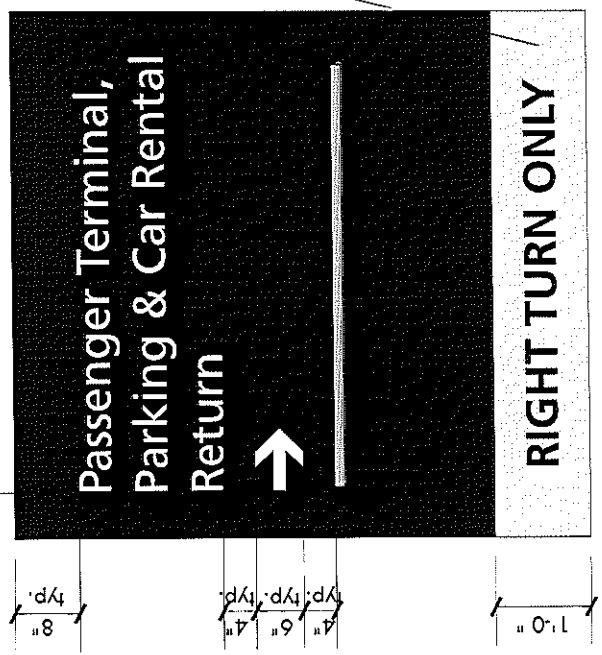
All ideas, plans or arrangements indicated on this drawing are copyrighted and owned by Neokraft Signs Inc. and shall not be reproduced, used by or disclosed to any person, firm or corporation without written permission of Neokraft Signs Inc.

Panel background: MAP 70A-1A Mosaic Blue (satin)
Back of panel: MAP 56A-1A Jamaican Holiday (satin)
Fruiter 55 copy: GSP White Reflective
Arrows: GSP White Reflective
Rule Primary: GSP Yellow Reflective
Rule Shadow: GSP Red Reflective

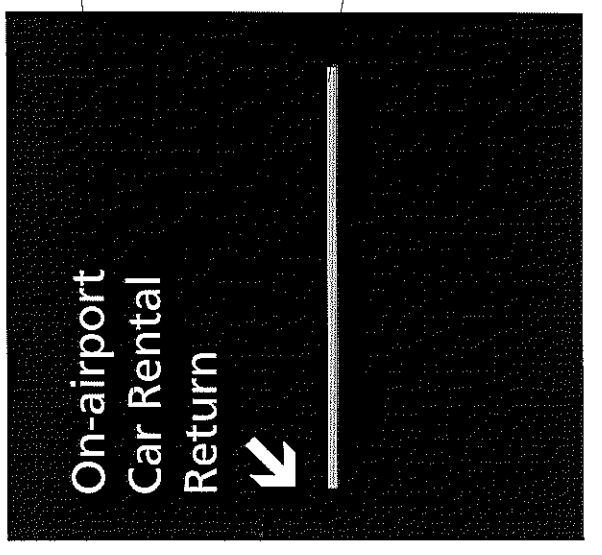
Background: MAP 36A-2P Vanilla Cream (satin)
Fruiter 65 (all caps) copy: GSP Black Reflective



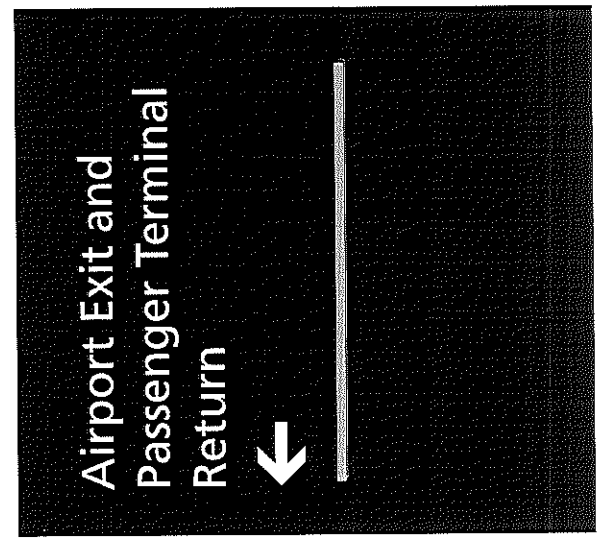
D-101



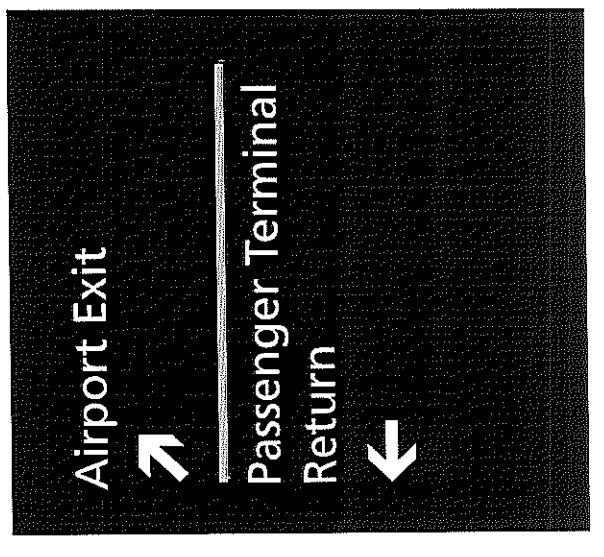
D-102



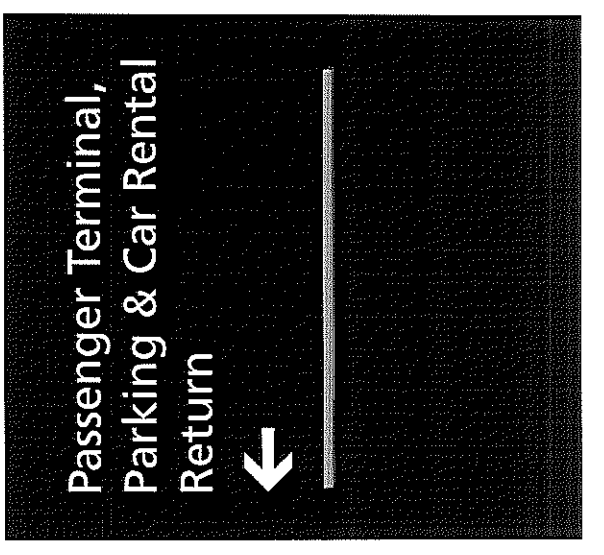
D-103



D-104



D-105



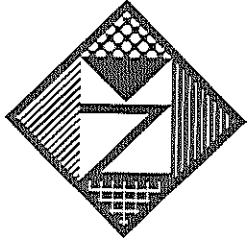
D-106

(Type D) Copy Layouts
1/2" = 1'-0"

Shop Drawing

97NK3192
Portland
International Jetport

Location: S. Portland, ME
Date: 9-10-97
Drawing No.: 14 of 17
Drawn by: J. Fogg
Revised:
Gen Ref.:



Neokraft

Neokraft Signs Inc.
686 Main Street
Lewiston, Maine 04240
Telephone: 207.782.9654
Facsimile: 207.782.0009
1.800.339.2258
http://www.neokraft.com

Custom Sign Fabrication

All ideas, plans or arrangements indicated on this drawing are copyrighted and owned by Neokraft Signs Inc. and shall not be reproduced, used by or disclosed to any person, firm or corporation without written permission of Neokraft Signs Inc.

Shop Drawing

97NK3192

Portland

International Jetport

Location: S. Portland, ME

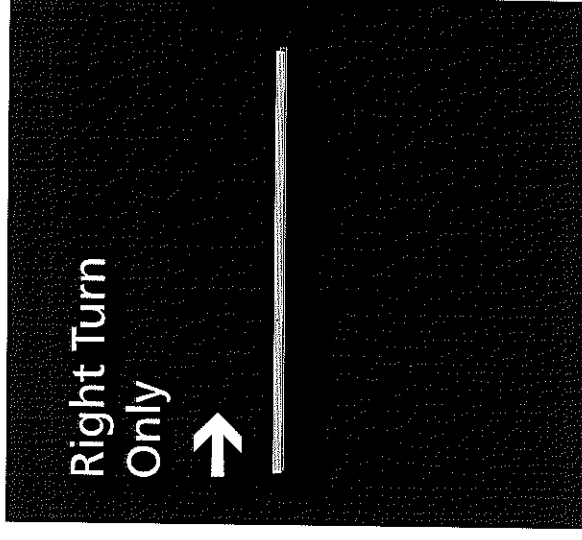
Date: 9-10-97

Drawing No.: 15 of 17

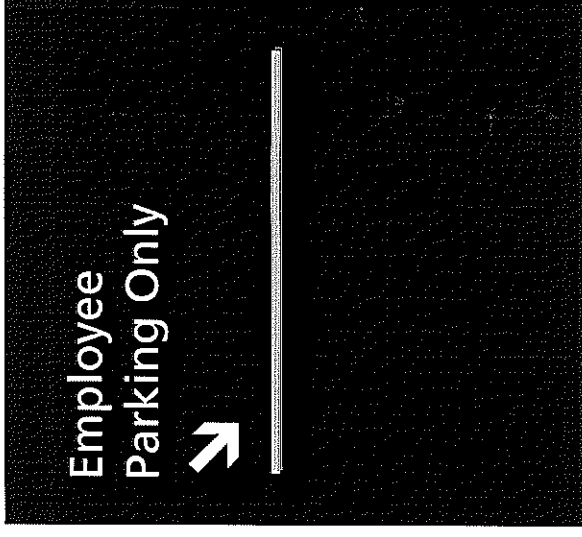
Drawn by: J. Fogg

Revised:

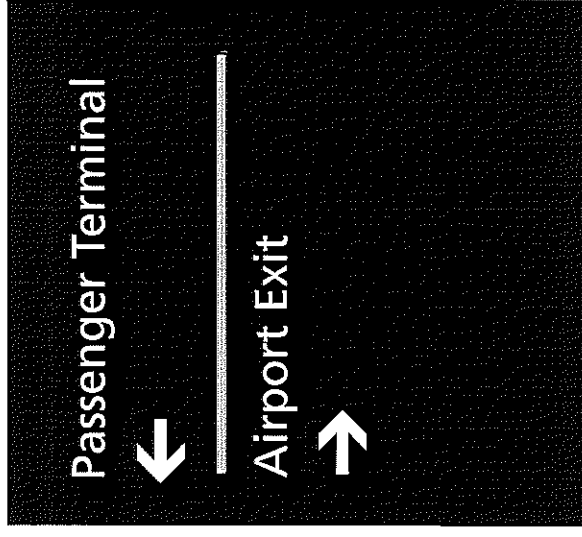
Gen Ref.:



D-111



D-109



D-108



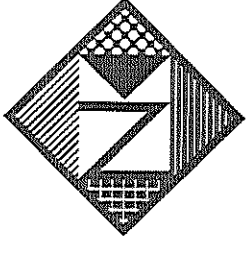
D-112
Special Sign

8" cap ht. Frutiger 55: GSP White Reflective vinyl
10" cap ht. Frutiger 65: GSP White Reflective vinyl
6" Frutiger 95 [all caps]: GSP Yellow Reflective vinyl

All copy centered as shown

Panel face background color is to be smooth gradation from MAP-70A-1A Mosaic Blue (satin) at the top to MAP-56A-1A Jamaican Holiday (satin) at the bottom.

(Type D) Copy Layouts
1/2" = 1'-0"



Neokraft

Neokraft Signs Inc.
686 Main Street
Lewiston, Maine 04240
Telephone: 207.782.9654
Facsimile: 207.782.0009
1.800.339.2258
http://www.neokraft.com

Custom Sign Fabrication

All ideas, plans or arrangements indicated on this drawing are copyrighted and owned by Neokraft Signs Inc. and shall not be reproduced, used by or disclosed to any person, firm or corporation without written permission of Neokraft Signs Inc.

Shop Drawing

97NK3192

Portland

International Jetport

Location: S. Portland, ME

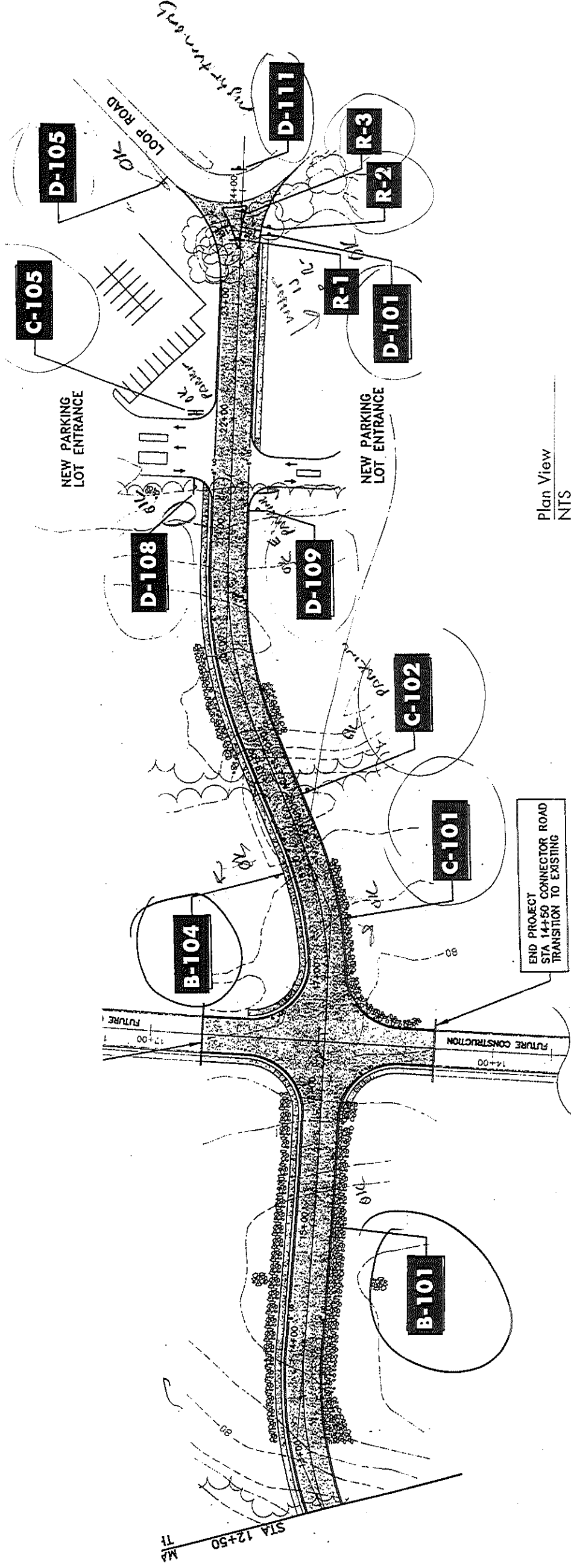
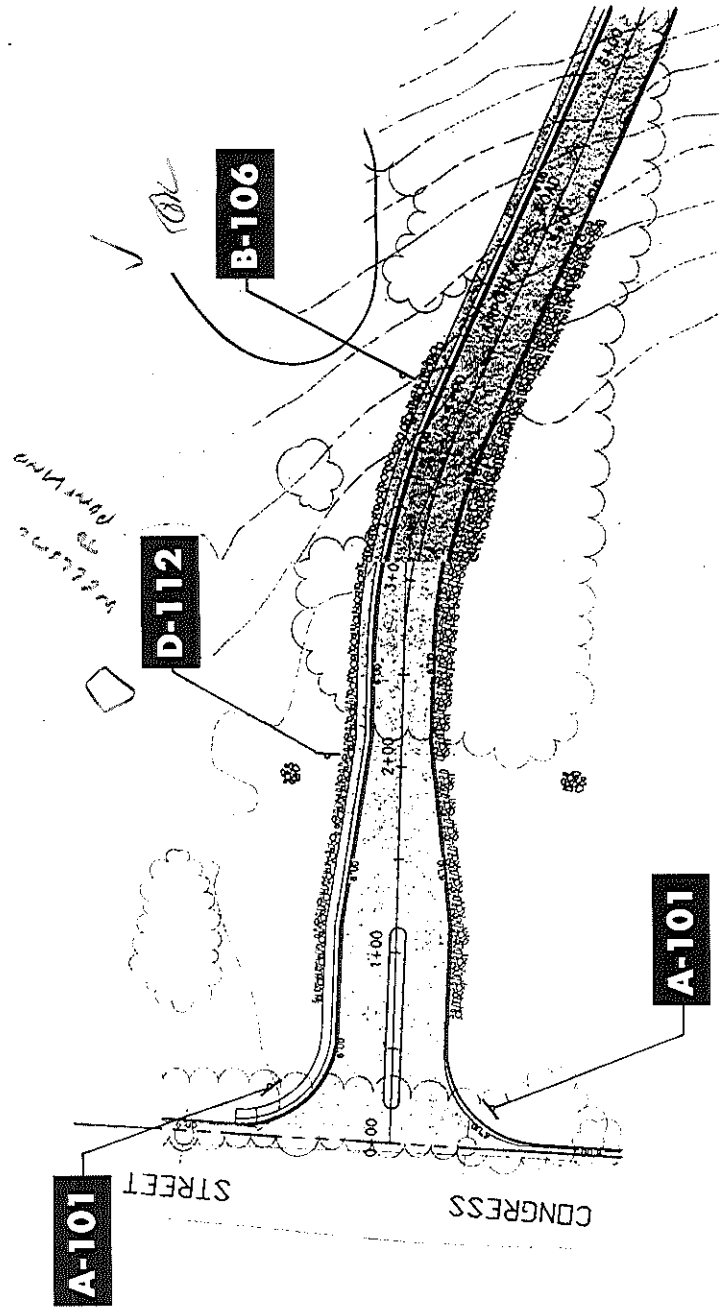
Date: 9-10-97

Drawing No.: 16 of 17

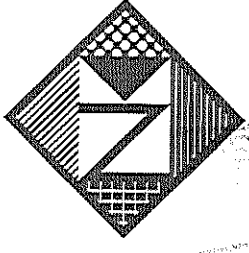
Drawn by: J. Fogg

Revised:

Gen Ref.:



Plan View
NTS



Neokraft

Neokraft Signs Inc.
686 Main Street
Lewiston, Maine 04240
Telephone: 207.782.9654
Facsimile: 207.782.0009
1.800.339.2258
http://www.neokraft.com

Custom Sign Fabrication

All ideas, plans or arrangements indicated on this drawing are copyrighted and owned by Neokraft Signs Inc. and shall not be reproduced, used by or disclosed to any person, firm or corporation without written permission of Neokraft Signs Inc.

Shop Drawing

97NK3192

Portland

International Jetport

Location: S. Portland, ME

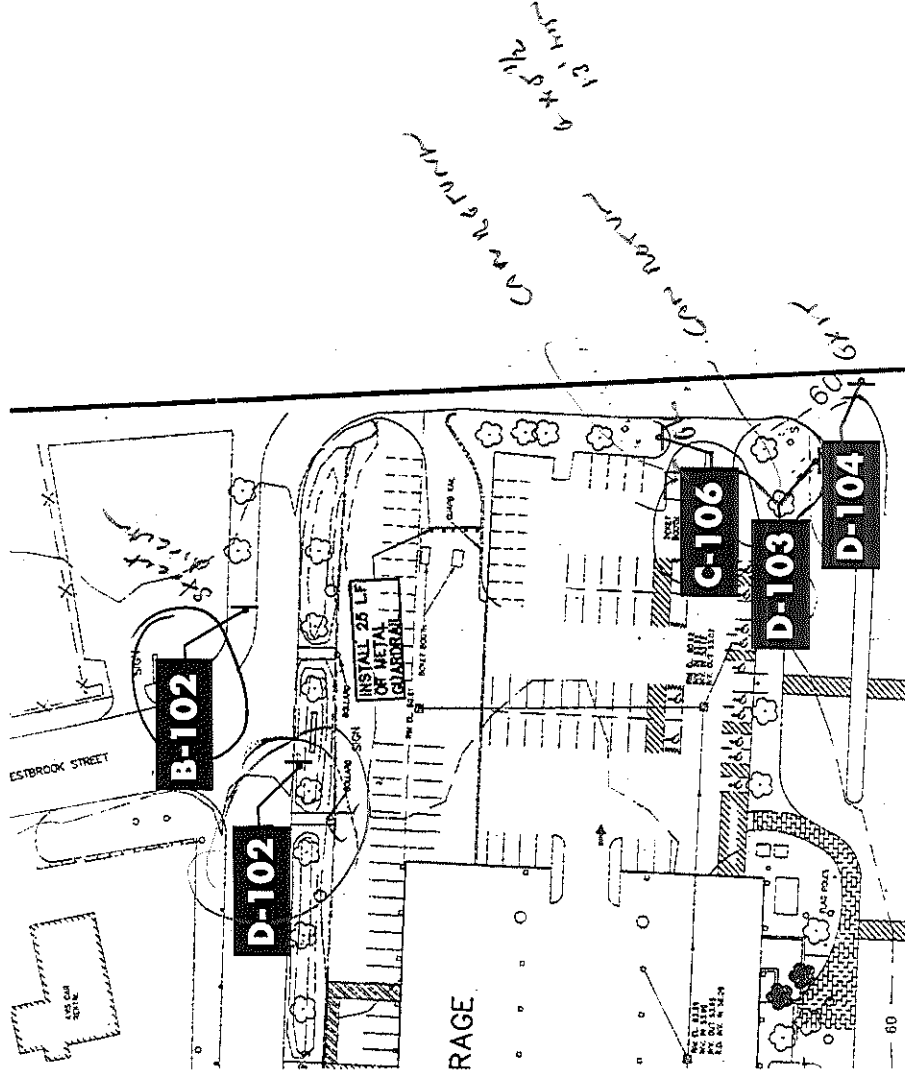
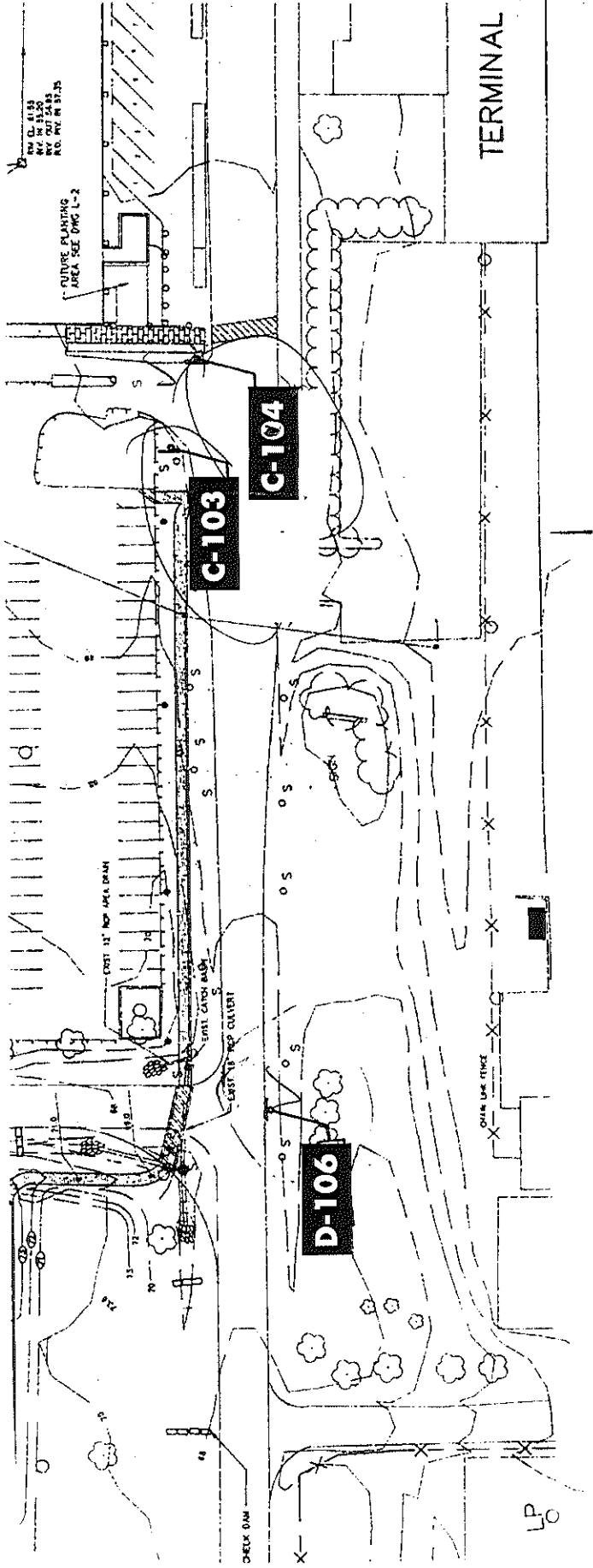
Date: 9-10-97

Drawing No.: 17 of 17

Drawn by: J. Fogg

Revised:

Gen Ref.:



Plan View
NTS