



CORTLAND
MORGAN
ARCHITECT

711 N. FIELDER RD.
ARLINGTON, TX 76012
PH: (817) 635-5696
FAX: (817) 635-5699

DRAWING ISSUE	DATE
75% SUBMITTAL	01.28.10

CNBC NEWS
Portland International Jetport
1001 Westbrook Street
Portland, Maine



THE PARADISE SHOPS

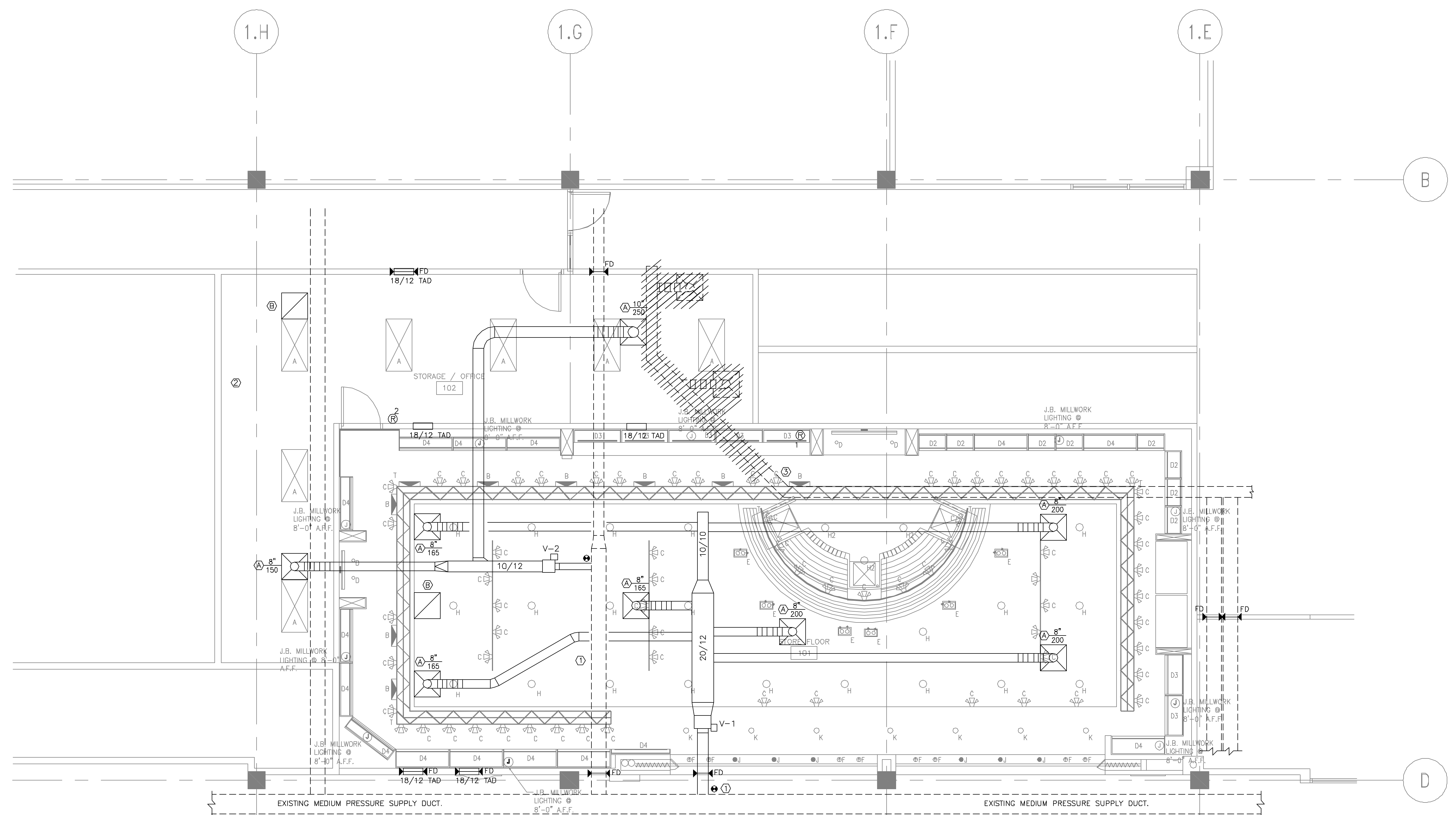
SEAL:
REVIEWED & APPROVED BY: _____
PROJECT MANAGER INITIALS: _____
DATE: _____

NOTE: THIS DOCUMENT CONTAINS COPYRIGHTED MATERIAL BELONGING EXCLUSIVELY TO CORTLAND MORGAN ARCHITECTURE, LLC. UNAUTHORIZED REPRODUCTION, DISTRIBUTION, OR PUBLICATION OF ANY OF THE INFORMATION CONTAINED HEREIN IS STRICTLY PROHIBITED. ANY SUCH ACT SHALL BE AT THE ACTOR'S RISK AND WITHOUT LIABILITY TO CORTLAND MORGAN ARCHITECTURE, LLC. WE DO NOT ASSUME ANY RESPONSIBILITY OR LIABILITY FROM ANY PERSON, OR COMPANY, THAT REPRODUCES OR OTHERWISE TRANSMITS THIS DRAWING WITHOUT OUR WRITTEN PERMISSION.

PROJECT NUMBER:
2777

DRAWING NAME:
MECHANICAL FLOOR PLAN

DRAWING NUMBER:
M-1



1 MECHANICAL PLAN
SCALE: 1/4" = 1'-0"

- GENERAL NOTES:-**
1. REMOVE THE EXISTING 10" VAV BOXES, DUCTWORK AND DIFFUSERS SOLELY SERVING THIS AREA.
 2. VERIFY THE VAV CONTROL PROTOCOL WITH PORTLAND PRIOR TO ORDERING.
 3. VERIFY THE VAV REMOTE T-STAT MODEL# WITH PORTLAND PRIOR TO ORDERING.

- KEY NOTES:-**
- ① REMOVE THE EXISTING 10" VAV BOX, DUCTWORK AND DIFFUSERS. IF A NEW TAP MUST BE CREATED, CAP AND SEAL EXISTING TAP.
 - ② REMOVE THE EXISTING DUCTWORK CURRENTLY SERVING THE BACK OF HOUSE AREA. CAP AND SEAL DUCT.
 - ③ REMOVE THE EXISTING DUCTWORK AND 2 DIFFUSERS CURRENTLY SERVING THE AREA BEHIND THE ESCALATORS. CAP AND SEAL DUCT.

PLENUM NOTES:
THIS BUILDING USES THE CEILING SPACE AS AN RETURN AIR PLENUM. MATERIALS ABOVE THE CEILING SHALL HAVE A FLAME-SPREAD INDEX OF NOT MORE THAN 25. AND A SMOKE DEVELOPED INDEX OF NOT MORE THAN 50, AS DETERMINED PER ASTM E84.