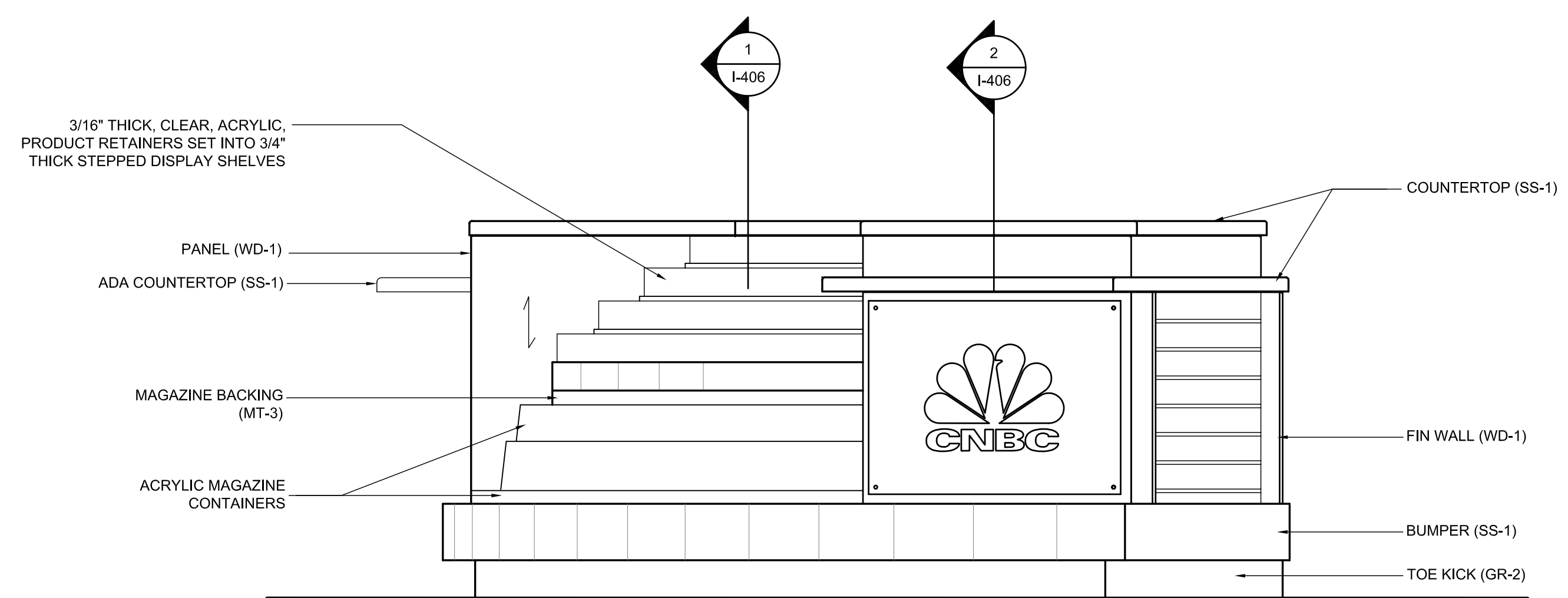


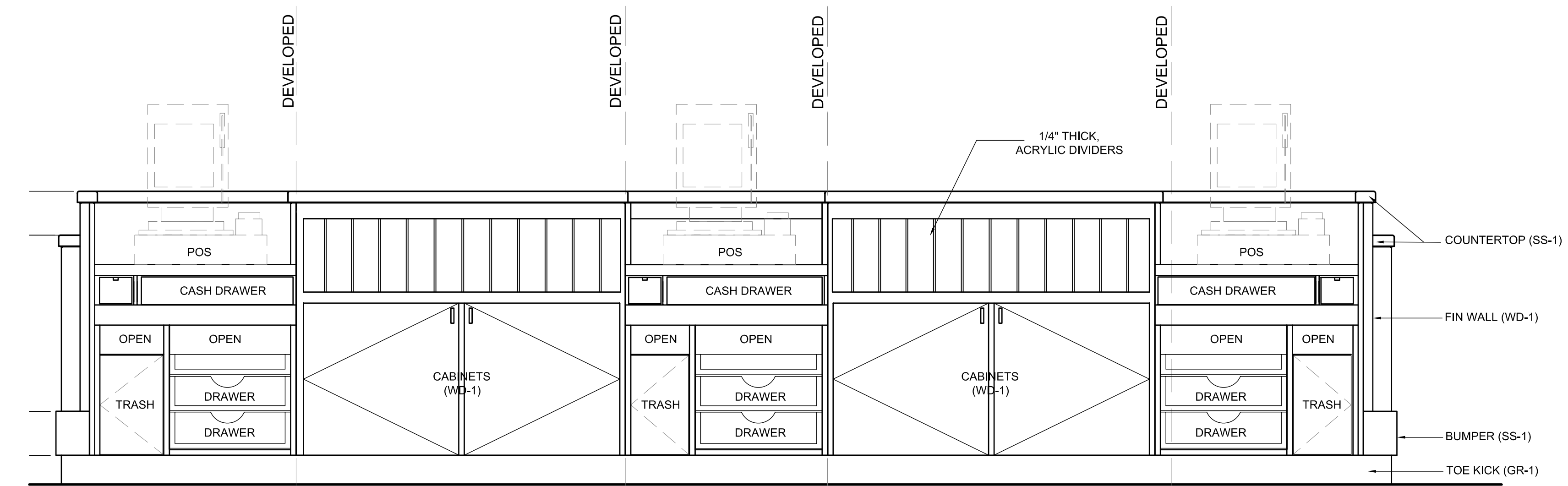


711 N. FIELDER RD.
ARLINGTON, TX 76012
PH: (817) 635-5696
FAX: (817) 635-5699

DRAWING ISSUE	DATE
75% SUBMITTAL	01.28.10
95% AIRPORT REVIEW	02.12.10
SUBMIT FOR PERMIT	02.26.10



ELEVATION - SIDE OF CASHWRAP 1" = 1'-0" 3



ELEVATION - INSIDE OF CASHWRAP 1" = 1'-0" 2

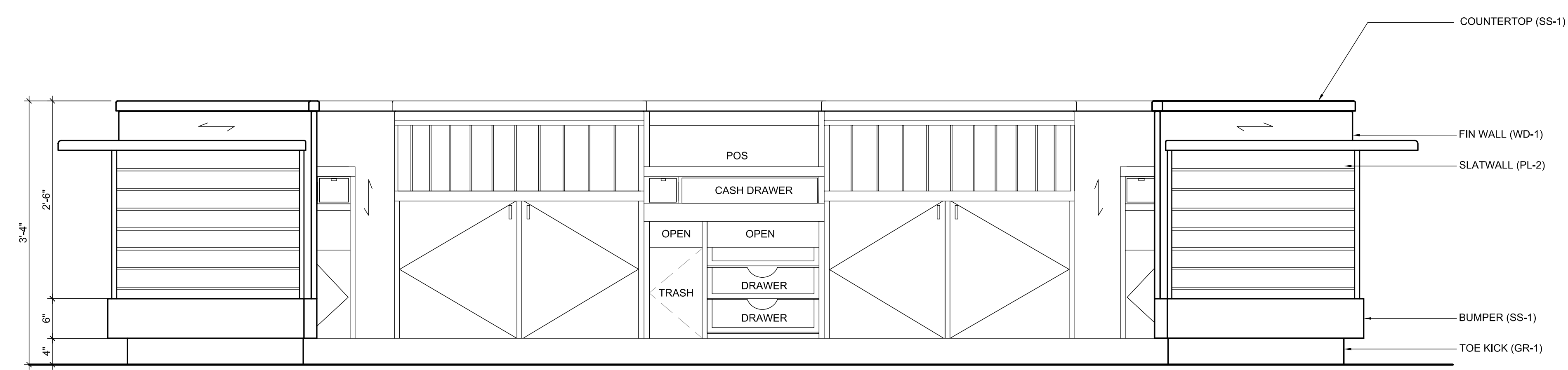
CNBC NEWS
Portland International Jetport
1001 Westbrook Street
Portland, Maine

THE PARADISE SHOPS

NOTE:
THESE DRAWINGS ARE SOLELY FOR EXPRESSING DESIGN INTENT AND ARE NOT TO BE USED FOR ACTUAL FABRICATION. CONTRACTOR IS REQUIRED TO PROVIDE SHOP DRAWINGS FOR WRITTEN APPROVAL PRIOR TO FABRICATION.

NOTE:
ALL RADIAL DIMENSIONS TO BE CONFIRMED BY MILLWORK SUB-CONTRACTOR

NOTE:
PROVIDE SHOP DRAWINGS FOR APPROVAL PRIOR TO FABRICATION. COORDINATE ALL WORK WITH ELECTRICAL SUB-CONTRACTOR. VERIFY SIZES AND PLACEMENT OF ALL EQUIPMENT WITH OWNER PRIOR TO FABRICATION. BLACK MELAMINE TO CASHWRAP INTERIOR UNLESS NOTED OTHERWISE.



ELEVATION - BACK OF CASHWRAP 1" = 1'-0" 1

SEAL:
REVIEWED & APPROVED BY: _____
PROJECT MANAGER INITIALS: T.L.
DATE: _____

NOTE:
THIS DOCUMENT CONTAINS COPYRIGHTED MATERIAL, BELONGING EXCLUSIVELY TO PARADISE SHOPS TEAM ARCHITECTURE, LLC. UNAUTHORIZED REPRODUCTION, DISSEMINATION, OR DUPLICATION OF ANY OF THE INFORMATION CONTAINED HEREIN MAY RESULT IN LIABILITY ENFORCEABLE BY LAW. IT IS THE RESPONSIBILITY OF THE OWNER AND SELECTED BY THE OWNER TO ACT ON HIS BEHALF TO ENSURE THAT ALL DOCUMENTS ARE APPROVED BY AND PERMITTED BY THE RELEVANT AGENCIES. WE DO NOT ASSUME ANY RESPONSIBILITY OR LIABILITY FROM ANY PERSON, OR COMPANY, THAT REPRODUCES OR TRANSMITS THESE FILES WITHOUT OBTAINING A RELEASE.

PROJECT NUMBER:
2777

DRAWING NAME:
Cashwrap Elevations

DRAWING NUMBER:
I-405